



AMACO®



Cone 5/6

# CRAWLS



# CRAWLS

Category: Mid-High Fire Glaze  
Firing Temperature: Cone 5 - Cone 6



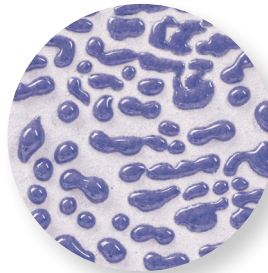
\*Food safe when applied over an AMACO Celadon.



CR-1 Black



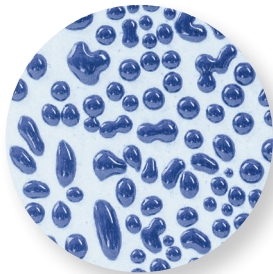
CR-41 Lime



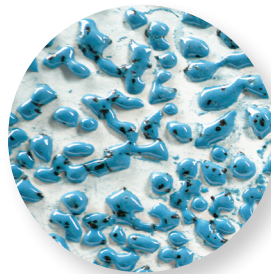
CR-54 Purple



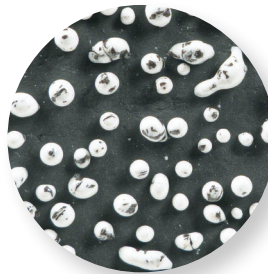
CR-58 Red



CR-20 Dark Blue



CR-22 Speckled Teal



CR-12 Speckled White



CR-61 Speckled Yellow



CR-51 Speckled Pink



CR-17 Flux Crawl



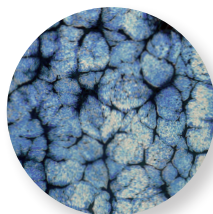
CR-18 Speckled Flux Crawl

Tiles are AMACO 11-M A-Mix White Stoneware Clay. Layered over V-360. Except CR-12 Speckled White, which is over V-362 & CR-17/ CR-18 which are not layered over an underglaze. Fired to Cone 6.

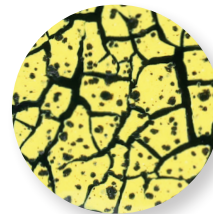
**GREAT FOR LAYERING!**

## MULTIPLE GLAZE EFFECTS, IN EVERY JAR

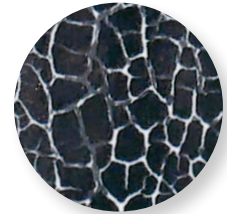
Expand your glazing possibilities by layering the Crawls over an AMACO Celadon glaze for a different effect.



CR-17 Flux Crawl Over C-1 Obsidian Cone 6



CR-61 Speckled Yellow Over C-1 Obsidian Cone 6



CR-1 Black Over C-10 Snow Cone 6

Definition of Cone Temperatures:

Cone 5 = 1184°C (at 150°C/hour for the final 100°C of firing) / 2201°F (at 270°F/hour in the final 200°F of firing)

Cone 6 = 1241°C (at 150°C/hour for the final 100°C of firing) / 2266°F (at 270°F/hour in the final 200°F of firing)

# CRAWLS Advantage

## FAQ

**Apply to...** Cone 04 Bisqueware

**Fire to...** Cone 5 - Cone 6

**Food safe?** These are considered food safe when layered over an Amaco Celadon.

- Add visual interest and character to pieces
- Unique - create distinctive, one-of-a-kind finishes
- Versatile - create a variety of different effects by layering the Crawls over AMACO glazes or underglazes
- Create natural depth and texture



## BEST USES

Ideal for larger forms or those with significant surface area: The glaze requires space to develop its crawling effect, which works well on bowls, plates, and vases.



## LAYERING

1 glaze with endless possibilities! Layer the Crawl glazes over other AMACO Cone 5/6 glazes for added depth and contrast! The crawling will reveal underlying glaze layers adding interest.



CR-17 Flux Crawl Over C-33 Sandalwood



CR-17 Flux Crawl Over C-53 Weeping Plum



CR-18 Speckled Flux Crawl Over C-54 Snapdragon



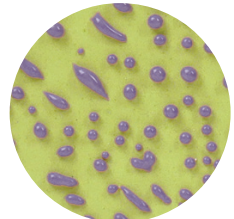
CR-18 Speckled Flux Crawl Over C-55 Poppy



CR-22 Speckled Teal Over C-1 Obsidian



CR-58 Red Over C-1 Obsidian

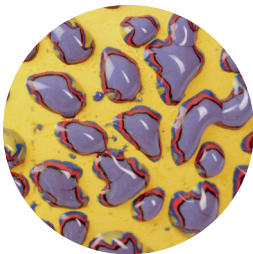


CR-54 Purple Over V-343 Chartreuse

Create beautiful glaze effects similar to the 'Frozen Pond' technique by layering CR-17 or CR-18 over AMACO Celadons.

Create a crackle effect by layering the classic Crawls over AMACO Celadons

Try layering over an underglaze for added interest and contrast!



**Fordite Technique:** Try layering multiple Crawls for a beautiful effect similar to geological strata.



CR-51 Speckled Pink over PC-17 Honey Flux



CR-20 Dark Blue over CO-6 Supernova



CR-58 Red over PC-33 Iron Lustre



CR-58 Red over PCF-54 Flux Blossom

Get surprising and unique results by layering the Crawls over other AMACO mid-range glazes!

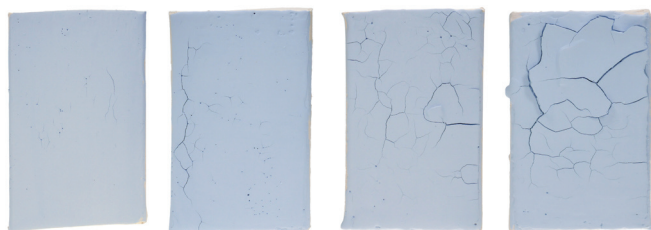
## WHAT IS CRAWLING?

Traditionally seen as a flaw - these glazes are made to embrace glaze crawl. Crawling occurs when the glaze pulls back from the surface during firing, creating a textured, uneven finish that reveals the underlying clay body or other glaze layers.



# APPLICATION

Due to the nature of these glazes, they can be flaky and fragile after drying. Handle pieces with care before firing.



1 Coat  
Unfired

2 Coats  
Unfired

3 Coats  
Unfired

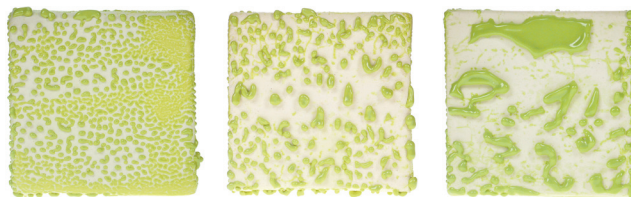
4 Coats  
Unfired

## TIPS FOR IMPROVED GLAZE ADHESION:

- Layer over stable underglaze or glaze to create a strong base that will improve adhesion and prevent dry cracking.
- Apply a thin layer of AMACO Gum Solution directly onto bisqueware before applying your Crawl glaze.
- Apply additional coats of Crawl glaze when the sheen has faded, but the glaze is not yet completely dry.
- Apply a top coat of AMACO Wax Resist to the entire piece after glazing to protect the glaze while moving from the studio to the kiln.

# THICKNESS

The amount of glaze applied will directly influence the intensity and pattern of crawling. Medium thickness is often ideal for a balanced, controlled Crawl. We recommend creating test tiles to determine your preferred number of coats.



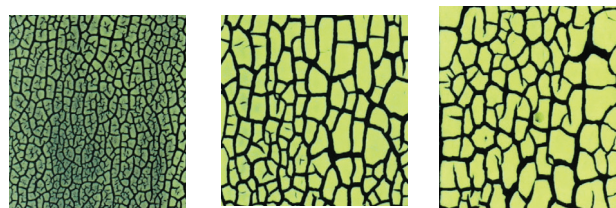
1 Coat

2 Coats

3 Coats

**CR-41 Lime**

The same applies when the Crawls are layered over another glaze.



1 Coat

2 Coats

3 Coats

**CR-41 Lime over C-1 Obsidian**

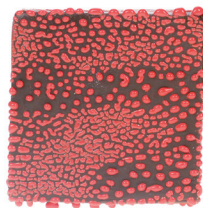


## QUICK TIP:

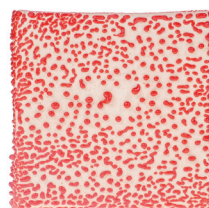
Sometimes the first layer of Crawl will leave a sort of thin spider-web texture on the background. Avoid this by matching the first coat of crawl with the color of your base underglaze. (ie. Yellow underglaze, then Yellow Speckled Crawl, then another or several Crawls layers as seen on the cover image)

## CLAY BODY

Different clays will interact with Crawl glazes in different ways, so it's always a good idea to test.



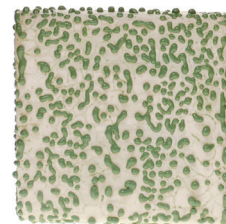
AMACO Dark  
Chocolate No.32



AMACO A-Mix  
White Stoneware  
No.11

## MIXABLE

The Crawls can be mixed for custom colors!



75% CR-41 Lime +  
25% CR-20 Dark Blue

## UNPREDICTABLE RESULTS:

Experiment with different tests, adjust glaze thickness, and fine-tune firing techniques to discover your ideal glaze result. The unpredictability of these glazes is part of the fun, so we recommend embracing it!

# HAVE FUN! EMBRACE THE SPONTANEITY OF THE CRAWLS!