



Texas Two-Step Oilspot Glazes Cooling

Oil spot glazes at cone 10 have provided some of the most striking and unique finishes in ceramics. Now, Coyote Texas Two Step glazes provide the same sought-after effect at cone 6, in a breathtaking variety of color combinations. These glazes work as a two part system, with the top coat pulling away to reveal brilliant spots of the glaze beneath.

Below is the complete Two-Step series, with every overcoat/undercoat combination shown. To use the Texas Two Step glazes, simply apply a Step One Undercoat to bisque ware (two or three coats brushing, one coat dipped) and wait for it to dry completely. Then, cover all or part of the first color with a Step Two Overcoat. When the piece is fired to cone 6 in an electric kiln, the glazes will interact, creating a phenomenal oil spot effect.

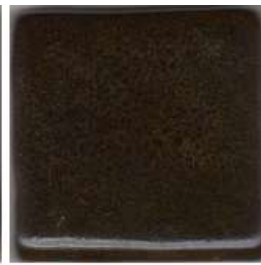
Varying the thickness of the glazes during application will have a dramatic effect on the finished piece, as the thicker the glazes get, the larger the spots they create will be. We found the optimum thickness to be two coats of the Step One Undercoat and three coats of Step Two Overcoat, but you may prefer thicker or thinner applications for different effects. Try experimenting!



Thickness tests showing Marshmallow brushed over Licorice (left), and dipped over Brick Red (right). Spots become noticeably larger and less regular after each new coat of glaze.



Licorice
MBG140



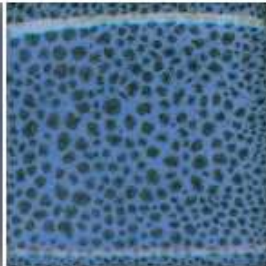
Coffee Bean
MBG141



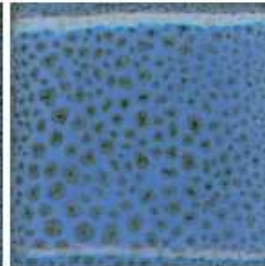
Brick Red
MBG142



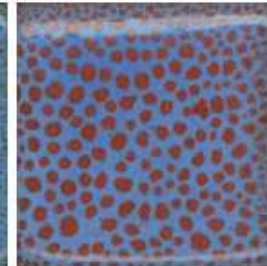
Blue Moon
MBG150



Blue Moon over Licorice
MBG140 & MBG150



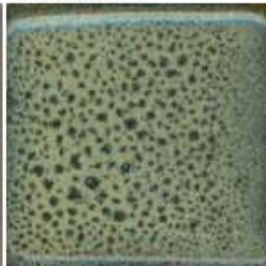
Blue Moon over Coffee Bean
MBG141 & MBG150



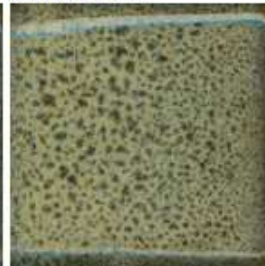
Blue Moon over Brick Red
MBG142 & MBG150



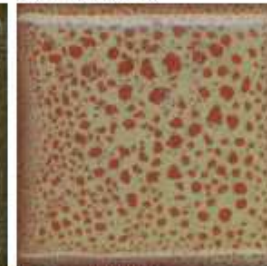
Birch
MBG151



Birch over Licorice
MBG140 & MBG151



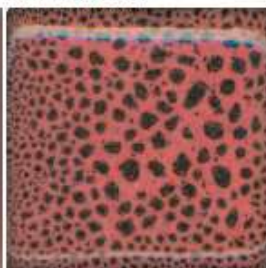
Birch over Coffee Bean
MBG141 & MBG151



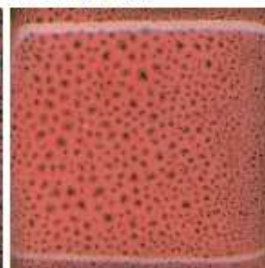
Birch over Brick Red
MBG142 & MBG151



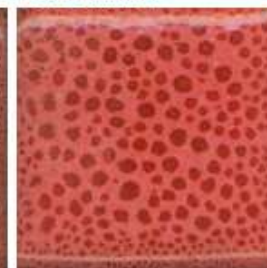
Texas Rose
MBG152



Texas Rose over Licorice
MBG140 & MBG152



Texas Rose over Coffee Bean
MBG141 & MBG152



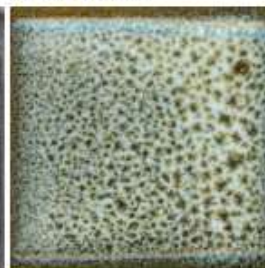
Texas Rose over Brick Red
MBG142 & MBG152



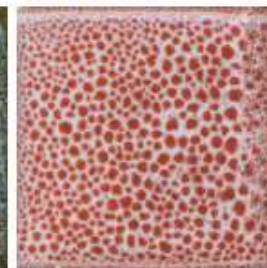
Marshmallow
MBG153



Marshmallow over Licorice
MBG140 & MBG153



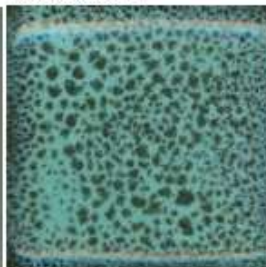
Marshmallow over Coffee Bean
MBG141 & MBG153



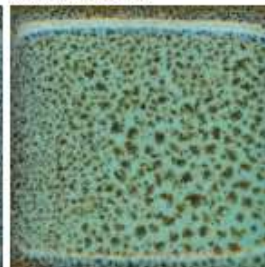
Marshmallow over Brick Red
MBG142 & MBG153



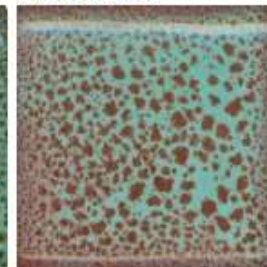
Sea Mist
MBG154



Sea Mist over Licorice
MBG140 & MBG154



Sea Mist over Coffee Bean
MBG141 & MBG154



Sea Mist over Brick Red
MBG142 & MBG154

