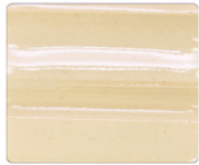


Spectrum® Glazes Inc.

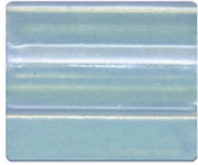
LEAD FREE
NON TOXIC*

1100 Series Stoneware Glazes

HI-FIRE
CONE 5



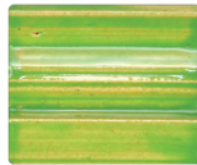
1100 ①
Transparent



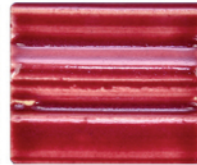
1102 ①
Wedgwood



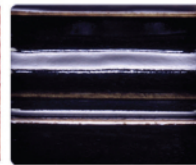
1103 ①
Dusty Rose



1104 ①
Grass Green



1106 ①
Crimson



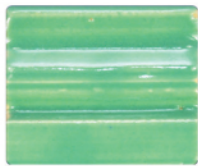
1107 ①
Black



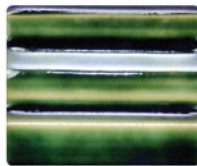
1108 ①
Butter Yellow



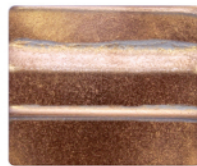
1109 ①
Coral



1110 ①
Turquoise



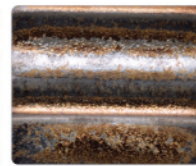
1111 ②
Holly Green



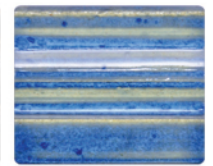
1112 ②
Gold



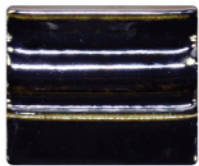
1113 ①
Milk'n'Honey



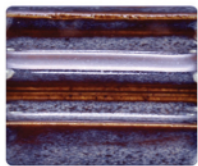
1114 ②
Gold Rain



1115 ①
Moonscape



1116 ②
Mirror



1117 ①
Text. Chocolate



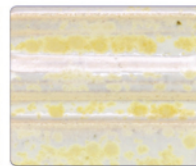
1118 ①
White



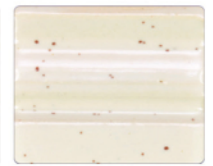
1120 ①
Satin Clear



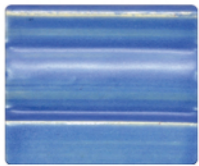
1121 ①
Satin White



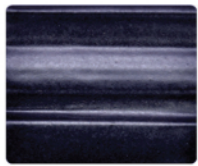
1122 ①
Satin Mottle



1123 ①
Satin Speckle



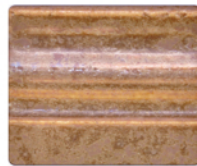
1124 ①
Satin Wedgwood



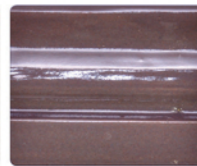
1126 ①
Satin Black



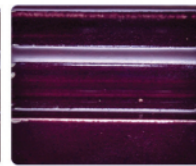
1127 ①
Satin Turquoise



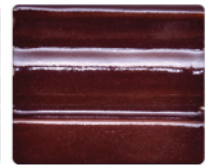
1129 ①
Text. Oasis



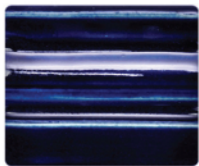
1131 ①
Charcoal



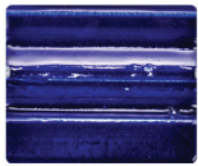
1132 ①
Purple



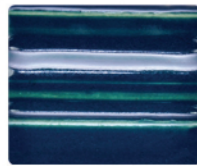
1134 ①
Choc. Brown



1135 ①
Navy Blue



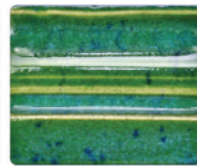
1136 ①
Royal Blue



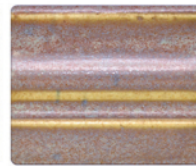
1137 ①
Teal Blue



1138 ①
Lime Green



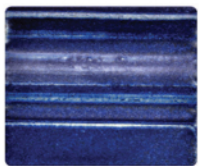
1140 ①
Text. Kiwi Fruit



1141 ①
Text. Cascade



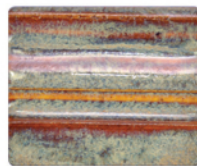
1142 ①
Text. Wheat



1143 ①
Text. Navy



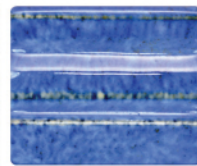
1144 ①
Text. Mottle



1145 ①
Text. Autumn



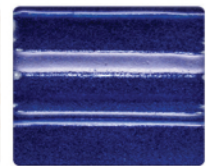
1146 ①
Text. Swampy



1147 ①
Delft Blue



1148 ②
Text. Chowder



1149 ①
Oceanic Blue

* EXCEPT 1111,1112,1114,1116,1148,1152,1153,1154,1157,1158,1159,1161,1162,1172,1173,1188,1198

Caution: None of these products should be taken internally. Contain ingredients not suitable for ingestion or inhalation.

www.spectrumglazes.com

Spectrum®

Glazes Inc.

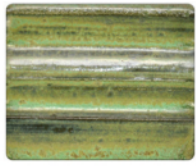
LEAD FREE
NON TOXIC*

1100 Series Stoneware Glazes

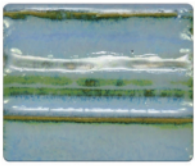
HI-FIRE
CONE 5



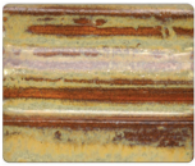
1151 ①
Fuschia



1152 ②
Text. Chrome



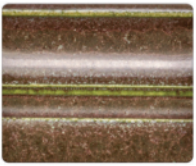
1153 ②
Text. Cobalt



1154 ②
Text. Iron



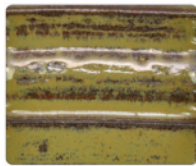
1155 ①
Pebble Stone



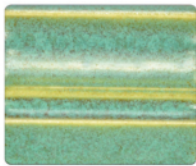
1156 ①
Olive Stone



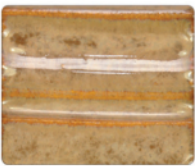
1157 ②
Text. Honey



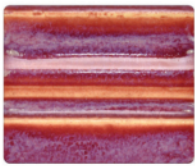
1158 ②
Text. Bronze



1159 ②
Green Stone



1161 ②
Text. Topaz



1162 ②
Text. Burgundy



1164 ⑤
Dark Red



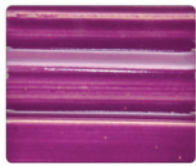
1165 ⑤
Bright Red



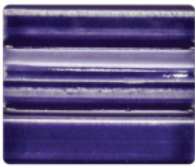
1166 ⑤
Bright Orange



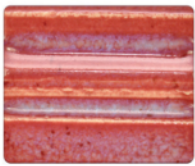
1167 ①
Bright Green



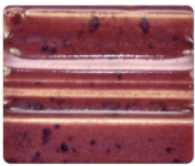
1168 ①
Bright Purple



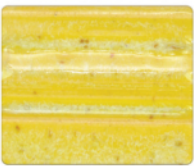
1169 ①
Dark Purple



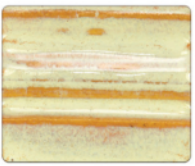
1170 ①
Text. Mulberry



1171 ①
Text. Plum



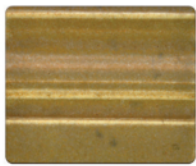
1172 ②
Text. Leopard



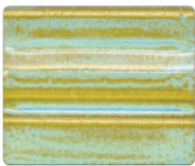
1173 ②
Run. Chowder



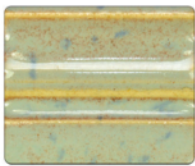
1176 ①
Cinnamon



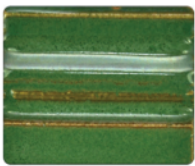
1177 ①
Antique Mottle



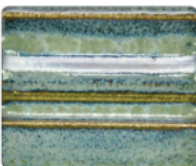
1180 ①
Lagoon



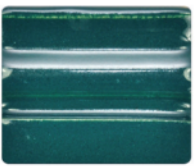
1181 ①
Text. Cloudburst



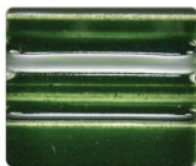
1182 ①
Text. Jungle



1183 ①
Dark Cloud



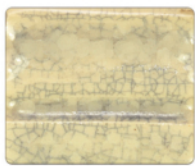
1184 ①
Hunter Green



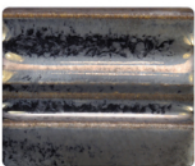
1185 ①
Forest Green



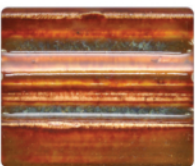
1186 ⑤
Soft Pink



1187 ③
Clear Crackle



1188 ②
Pewter



1191 ①
Muddy Waters



1192 ①
Reactive Purple



1193 ⑤
Fire Engine Red



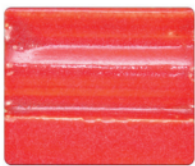
1194 ⑤
Christmas Red



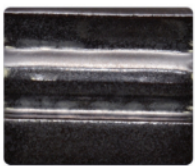
1195 ⑤
Neon Orange



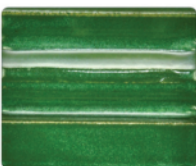
1196 ⑤
Hot Pink



1197 ⑤
Reactive Red



1198 ②
Oil Spot



1199 ①
Text. Mossy



① Dinnerware safe. Contains no lead or cadmium ingredients. Certified AP Non-Toxic and conforms to ASTM D-4236.



② Dinnerware safe. Contains some heavy metals and/or cadmium compounds but passes test for lead and cadmium release.



③ Contains no lead or cadmium ingredients. May invite bacteria growth due to glaze fissures. Not recommended for surfaces which contact food or drink. Certified AP Non-Toxic.



⑤ Dinnerware safe. Contains no lead. Contains encapsulated cadmium pigment. Certified AP Non-Toxic and conforms to ASTM D-4236

Note: In order for glazes labeled ①, ②, or ⑤ to be dinnerware safe, they must be fired to recommended firing temperature. In order for underglazes, one-strokes or RACs to be dinnerware safe, they must be covered with a dinnerware safe clear glaze such as Spectrum 1100 and fired to the recommended firing temperature of the glaze.