

Sample

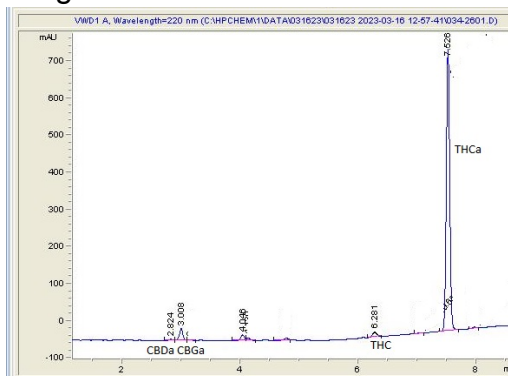
Red Velvet THCA Hemp

Sample Submitted: 03-16-2023; Report Date: 03-16-2023

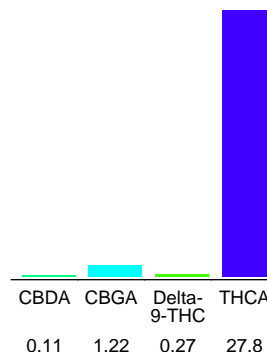
Red Velvet THCA Hemp

Plant Material: Flower

Chromatogram



Cannabinoid Profile



Cannabinoid Profile by HPLC

0.27%

Delta-9-THC

0.00%

CBD

29.40%

Total Cannabinoids

| Cannabinoid | % wt | mg/g |
|-----------------------------|--------------|--------------|
| CBDA | 0.11 | 1.1 |
| CBGA | 1.22 | 12.2 |
| Delta-9-THC | 0.27 | 2.7 |
| THCA | 27.8 | 278.0 |
| Total Cannabinoids | 29.40 | 294.0 |
| Calculated CBD Yield | 0.10 | 0.96 |

Calculated Maximum CBD Yield = CBD + 0.877 * CBDA

Marin Analytics, LLC
250 Bel Marin Keys Blvd, Suite D4
Novato, CA 94949

415-936-6477 / sarabiancalana1@gmail.com

Sara Biancalana
Sara Biancalana
Chief Scientist

This sample has been tested by Marin Analytics, LLC using valid testing methodologies and a quality system. Values reported relate only to the sample tested. Marin Analytics, LLC makes no claims as to the efficacy, safety or other risks associated with any detected or non-detected levels of any compounds reported herein. This Certificate shall not be reproduced except in full, without the written approval of Marin Analytics, LLC. Copyright 2022 Marin Analytics, LLC All Rights Reserved.