

WI HEMP SCIENTIFIC

Certificate of Analysis

Name of Client:	
Sample Name:	Trump
Date of Analysis:	11-21-2019
Batch Number:	20191121-1

Results		
	wt %	mg/g
Cannabidiolic acid - CBDA	19.13%	191.3
Cannabigerol - CBG	ND	ND
Cannabidiol - CBD	0.56%	5.6
Cannabinol - CBN	0.09%	0.9
Delta-9-Tetrahydrocannabinol - d9-THC	0.15%	1.5
Tetrahydrocannabinolic acid - THCA	0.67%	6.7

CBD and THC Equivalents		
	wt %	mg/g
CBD Equivalents	17.34%	173.4
THC Equivalents	0.74%	7.4

CBD:THC Ratio 23:1

CBD and THC Equivalents Explained

CBD Equivalents = $0.877 \times \text{CBDA} + \text{CBD}$

THC Equivalents = $0.877 \times \text{THCA} + \text{d9-THC}$

Upon heating CBDA and THCA transform into CBD and d9-THC, respectively. This process is called decarboxylation because a carboxyl group is lost in the process. It is standard to calculate the actual weight percent/concentration of both CBD and THC as the weight percent/concentration assuming all of the CBDA and THCA are decarboxylated.

Lab Personnel Signature:
Date:

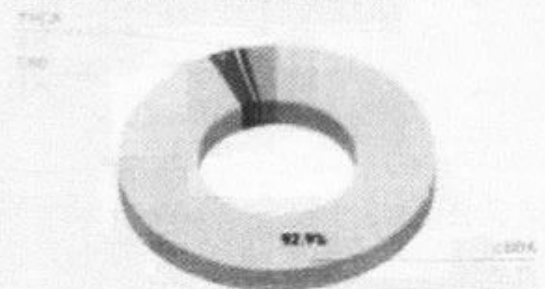
Benjamin Kluge

11/21/2019

Wisconsin Hemp Scientific, LLC
info@wihempsci.com
www.wisconsinhempscientific.com
N63W22505 Main St Sussex, WI 53089

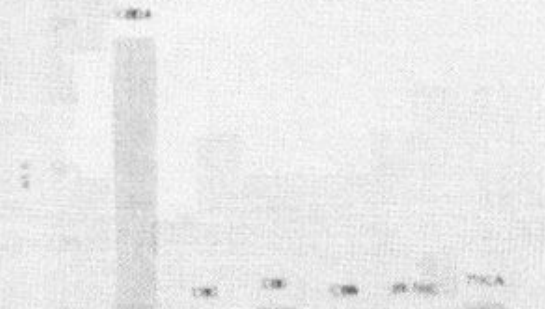
Cannabinoid Profile

As a percentage of total cannabinoids



Cannabinoid Profile

As a percentage of total sample weight



Details of Testing

High performance liquid chromatography (HPLC) was used to determine concentrations of CBD, CBG, CBDA, CBN, d9-THC, and THCA. Any result reported back as ND (not detected) is below our lower limit of detection. Our lower limit of detection is 0.005%. Results are reported on a dry weight basis.

Disclaimer

These results are solely for the purposes of research and development. This report is only for the sample cited above and may not be reproduced except in its entirety.