

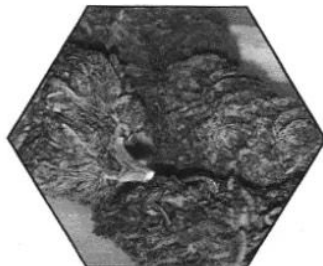
Sample: 1910DBL0404.10296
METRC Sample:

Strain: Purple Punch

Ordered: 10/28/2019; Sampled: 10/28/2019; Completed: 10/30/2019

Purple Punch

Plant, Flower - Cured



Cannabinoids



Cannabinoids

0.703%



Total THC

18.988%



Total CBD

24.395%



Total Cannabinoids

NT



Moisture

Cannabinoid Profile

Analyzed by 300.18 UHPLC/PDA

Cannabinoid	Mass	Mass	LOQ
	%	mg/g	%
CBC	0.030	0.30	0.023
CBCa	1.138	11.38	0.023
CBD	0.426	4.26	0.023
CBDa	21.165	211.65	0.023
CBDV	<LOQ	<LOQ	0.023
CBDVa	0.091	0.91	0.023
CBG	<LOQ	<LOQ	0.023
CBGa	0.749	7.49	0.023
CBL	<LOQ	<LOQ	0.023
CBN	<LOQ	<LOQ	0.023
Δ8-THC	<LOQ	<LOQ	0.023
Δ9-THC	0.033	0.33	0.023
THCa	0.763	7.63	0.023
THCV	<LOQ	<LOQ	0.023
THCVa	<LOQ	<LOQ	0.023
Total THC	0.703	7.03	
Total CBD	18.988	189.88	
Total	24.395	243.95	



Stacy Gardalen

Stacy Gardalen
Quality Control

Glen Marquez

Glen Marquez
Quality Control



4439 Polaris Ave
Las Vegas, NV

(702) 728-5180

www.dblabslv.com

The reported result is based on a sample weight with the applicable moisture content for that sample. LOQ = Limit of Quantitation. Pesticide LOQ = Instrument Limit of Quantitation, NA = Not Analyzed, ND = Not Detected, NR = Not Reported, NT = Not Tested, PGR = Plant Growth Regulator. Unless otherwise stated all quality control samples performed within specifications established by the Laboratory. This product has been tested by DB Labs, LLC (MME# 61887736101164525768) using valid testing methodologies and a quality system as required by Nevada state law. Edibles are picked up prior to final packaging unless otherwise stated. Values reported relate only to the product tested. The uncertainty of measurement associated with the measurement result reported in this certificate is available from the organization upon request. DB Labs makes no claims as to the efficacy, safety or other risks associated with any detected or non-detected levels of any compounds reported herein. This Certificate shall not be reproduced except in full, without the written approval of DB Labs.