



Customer: Fresh Bros
Customer Sample ID: 10mg Delta-9 Mixed Flavor Vegan Pectin Gummy Squares
Laboratory Number: 20J0236-08
Servings per Container: 30 Servings

Cannabinoid Profile

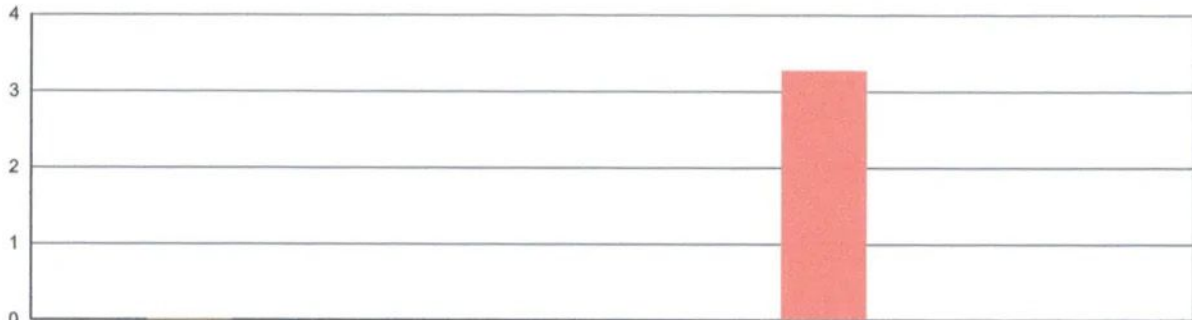
Extraction Technician: DF
Analytical Chemist: CB

Extraction Date(s)	Analysis Date(s)
10/12/2020	10/13/2020

Cannabinoids (HPLC)		Results		
	LOD (mg/g)	%	mg/g	mg/gummy
Cannabidivarin (CBDV)	<0.009			
Cannabidiolic Acid (CBD-A)	<0.009			
Cannabigerolic Acid (CBG-A)	<0.009			
Cannabigerol (CBG)	<0.009			
Cannabidiol (CBD)		0.002	0.020	0.080
Tetrahydrocannabivarin (THCV)	<0.009			
Cannabinol (CBN)	<0.009			
delta 9-Tetrahydrocannabinol (THC)	<0.009			
delta 8-Tetrahydrocannabidol		0.33	3.28	13.1
Cannabichromene (CBC)	<0.009			
delta-9-Tetrahydrocannabinolic Acid (THC-A)	<0.009			
Cannabinoids Total		%	mg/g	
Max Active THC		0.00	0.00	
Max Active CBD		0.00	0.02	
T.Active Cannabinoids		0.00	0.02	
Total Cannabinoids		0.33	3.30	

Following USDA guidelines on uncertainty, Altitude Consulting's uncertainty are calculated for CBDa and CBD at +/- 4%. The uncertainty for THCa and THC are +/- 5%. This implies the range for a 10% value of CBD to be 9.6-10.4%. The uncertainty range for a 0.30% value of THC would be 0.28-0.32%. The measurement uncertainty is calculated using a coverage factor of 2.

Cannabinoid (mg/g)



■ Cannabichromene (CBC)	■ Cannabidiol (CBD)	■ Cannabidiolic Acid (CBD-A)	■ Cannabidivarin (CBDV)	■ Cannabigerol (CBG)
■ Cannabigerolic Acid (CBG-A)	■ Cannabinol (CBN)	■ delta 8-Tetrahydrocannabidol	■ delta 9-Tetrahydrocannabinol (THC)	■ delta-9-Tetrahydrocannabinolic Acid (THC-A)
■ Tetrahydrocannabivarin (THCV)				

Reporting Limits will vary based on sample extraction weight used for the analysis.

Altitude Consulting, LLC utilizes NIST traceable Reference Standards and Certified Reference Material to calibrate analytical instruments along with proven analytical methods. The methods are applied in the most ethical manner following good laboratory practice guidelines. The results of this report are based solely on the sample submitted and cannot be reproduced.