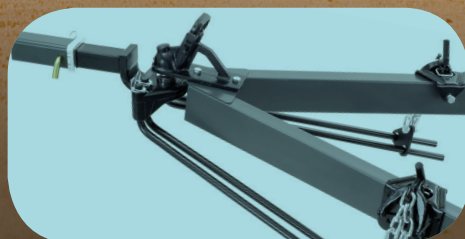


# TOWING & CAR ACCESSORIES



*TRADE CATALOGUE 2015*



## Index

Tow Balls, Covers and Locks	T-04
Tow Mirrors	T-07
Towing Aids, Weight Distribution Hitch	T-10
Brake Controllers & System	T-14
Rollers Boat Trailer	T-16
Trailer and Boat Winches	T-18

## Towing & Car Accessories

Get out and explore the country in comfort and safety with Camec towing products. Touring and towing an RV is one of the most exciting ways to see Australia. Australian RVs are among the best in the world. However, towing any type of trailer involves more than attaching a towbar to your vehicle and hitching up. It adds another dimension to your driving and there are a number of considerations you should take into account.

These include:

- Vision all around the vehicle including behind you with mirrors
- The type of tow bar and hitch you should fit to your vehicle and the maximum load capacity of the coupling
- The type of equipment you may need to fit to increase the trailer's stability when being towed
- Whether your trailer is correctly loaded
- The ways in which towing can affect your driving in terms of acceleration, braking and fatigue



**Camec Suction Cup Towing Mirror**

See page 07



**Camec Weight Distribution Kit**

See page 10



**Towball 50mm x 62mm x 7/8inch Machined**

See page 04

Tow Balls, Covers and Locks



**Towball 50mm x 62mm x 7/8inch Machined**

Standard towball size with long shank to allow stabiliser bar OR bike rack to be fitted. (62mm shank)

**SPECIFICATIONS:**

- Towing capacity: 3500kg.
- Chrome plated

Colour Chrome

006252



**Black PVC Towball Soft Cover**

Push on towball covers provide protection from grease. Suits 50mm and 1 & 7/8in tow balls. Sold individually.

Colour Black

000849



**Towball 50mm x 80mm x 7/8in Machined**

Standard 50mm ball size, extra long shank for fitting stabiliser blocks and bike racks etc.

**SPECIFICATIONS:**

- Towing capacity: 2500kg.
- Shank size 7/8in diameter x 80mm length.

Colour Chrome

006250



**Towball 1 & 7/8in x 51 mm Machined**

Large 1&7/8in ball size, extra long shank for fitting stabiliser blocks and bike racks etc.

**SPECIFICATIONS:**

- Towing capacity: 2270kg.
- Shank size: 7/8in diameter x 51mm length

Colour Chrome

006255

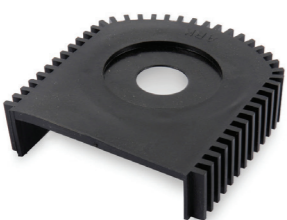


**Plastic Towball Cover Black Hard**

Push on towball covers provide protection from grease. Suits 50mm and 1 & 7/8in tow balls. Sold individually.

Colour Black

000848



**Shin Protector Ark Tp11**

Made from soft rubber, fits securely over tow bar goose neck.

Colour Black

039991



**Towball Spanner**

Used for towball nuts, snap up bracket bolts, D shackles, towbar tongue bolts and adjustable ball mount bolts and nuts.

006256

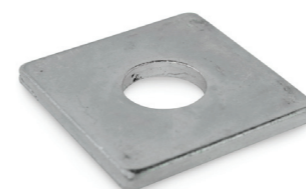


**Chromed Plastic Towball Cover 12 Per Box**

Push on towball covers provide protection from grease. Suits 50mm and 1 & 7/8in tow balls.

Colour Chrome

000850



**Couplmate Packing Washer**

001027



**Couplmate Ball Attachment Aid**

The Couplmate is an innovative self-aligning accessory designed to locate the trailer coupling directly over the ball without assistance, physical effort or guiding. It can also be used as a theft deterrent by securing the trailer to the vehicle.

**FEATURES:**

- Suits standard tow ball and torsion bar fittings.
- Long shank tow balls are recommended when used in conjunction with torsion bar fittings Couplmate Hi
- Wings can be locked in the security position as a theft deterrent whilst towing or when the vehicle and/or trailer are left unattended.

COUPLMATE BALL ATTACHMENT AID  
COUPLMATE REMOVABLE WING  
COUPLMATE BASE PLATE

001024  
001025  
001026



**Coupling Lock Heavy Duty Trailer**

**FEATURES:**

- Padlock not included.
- Fit in seconds.
- Heavy duty.

000399

Tow Balls, Covers and Locks



**Coupling Lock Trailer Cop**

Quick release expanding towball coupling lock, fits all popular trailer couplings with a barrel lock for high security.

**FEATURES:**

- Quick release expanding towball coupling lock.
- Easy to operate.

000385



**Coupling Lock & Padlock -Dual Plated With Padlock Deluxe**

Secures trailer when attached or not attached to a vehicle.

**FEATURES:**

- Heavy duty 2 position locking system.
- Includes padlock.

000395



**Coupling Lock - Couplmate Dual For Car & Trailer**

Suit camper with either no braking system or electric braking system.

**FEATURES:**

- Suitable for trailers under 3000kg only
- Saves time and effort on every hook up
- Easy to install
- Maximum weight load: 2000kg
- Dual lock for car and trailer.
- Self aligns your trailer directly over your tow ball.

000392

**Tow Balls, Covers and Locks**



**Pull Pin Hitch Lock Prime 18-2058**

Keeps the tow hitch secure with a lockable pull pin.

**FEATURES:**

- Locking pins for Reese towbars - secures the hitch with a keyed locking pin.
- Prime locking pull pin

Colour Chrome

036448



**Pull Pin Lock S Treg Talon**

Used to lock a 4WD Treg or Trigg coupling to a vehicle.

**FEATURES:**

- Includes dust cap.
- Slip the lock pin into coupling and attach the cylinder onto the machined end, then, simply turn key
- For 4WD use.

036449



**Pull Pin Hitch Lock + Treg Lock**

Used to lock a 4WD Treg or Trigg coupling to a vehicle.

**FEATURES:**

- Kit includes, lock pin and pull pin lock.
- Lock pin secures the coupling to the hitch
- Pull pin secures the hitch to the vehicle
- Keys alike

036450

**Towing Mirrors**



**Camec Suction Cup Towing Mirror**

Quick and easy to fit and suitable for most vehicles.

**FEATURES:**

- Universal fittings
- Adjusts with vehicle's power mirror

040656



**Camec Clip On Towing Mirror (Flat Glass)**

Quick and easy to fit and suitable for most vehicles.

**FEATURES:**

- Universal fitting
- Quick and easy to fit
- Aerodynamic and durable
- Supplied with straps for added security

040657



**Ark/Hayman Reese Lockable Pull Pin**

Pull pin is straight for easier access in some towbars. Enables you to lock your tow ball mount onto the towbar preventing theft.

**FEATURES:**

- Includes spring clip for extra protection
- Towing capacity: 3500kg

Colour Chrome

000913



**Hayman Reese Hitch Lockable Pull Pin**

Enables you to lock your trailer ball mount onto the towbar preventing theft.

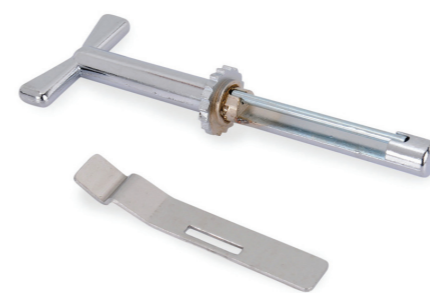
**FEATURES:**

- Features a dust and weather proof cover to protect the lock.

000914



Part No: 041479 for more informations see page E-24 (Electrical).



**Camec Heavy-Duty Mirror Ratchet/Spring Suit Code 034194**

Replacement ratchet & spring to suit Camec heavy duty mirror - refer code 034194.

036576



**Camec Heavy-Duty Mirror Adj Screw/Nut**

Replacement adjustable screw & nut to suit Camec heavy duty mirror - refer code 034194.

036577

**Camec Heavy-Duty Door Mirror Ratchet Strap Type**

Fits most vehicles, this heavy duty door mounted mirror fits firmly and offers excellent vision. The large mirror head is 229mm(w) x 155mm(h) and is attached to an adjustable extension arm.

**FEATURES:**

- Ratchet T Bar ensures firm fitting
- Quality rubber mounting pads
- Suitable for towing caravans, campers, horsefloats, boats, etc.
- Installation in minutes
- Extends from 330mm to 470mm.

034194



**Couplemate Hitch Pin Lock 65mm**

If you have a trailer lock, you will also need a receiver lock to replace your existing pin as it is too easy to remove the pin and push the receiver assembly out, trailer & all.

**FEATURES:**

- Suits all receiver types
- Weight: 3kg

Colour Chrome

000933



**Couplemate SS Hitch Lock 85mm**

If you have a trailer lock, you will also need a receiver lock to replace your existing pin as it is too easy to remove the pin and push the receiver assembly out, trailer & all.

**FEATURES:**

- Suits all receiver types
- Weight: 3kg

Colour Chrome

000934



**Camec Heavy-Duty Mirror Bracket & Strap**

Camec heavy duty mirror bracket & strap to suit wide door.

034827



**Camec Heavy-Duty Mirror Head Only**

Replacement heavy duty mirror head to suit Camec heavy duty mirror - refer code 034194.

000995

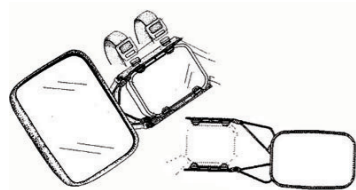


**Camec Heavy-Duty Mirror Standard Strap/Hook**

Replacement heavy duty mirror strap & hook to suit Camec heavy duty mirror - refer code 034194.

036575

**Towing Mirrors**



**Towing Mirror 4X4 Strap On XL**

This mirror suits extra large mirrors and has two pivoting arms.

**FEATURES:**

- Extension arm to fit extra large mirrors,
- Fits most standard mirrors and includes articulated arms
- Flat clear lens

**SPECIFICATIONS:**

- Durable plastic
- UV stabilised to suit Australia's climate

TOWING MIRROR 4X4 STRAP ON XL  
REPLACEMENT STRAP ONLY  
REPLACEMENT BUCKLE ONLY 4X4

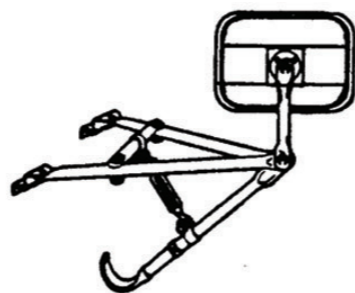
000956  
000999  
001002



**Towing Mirror Standard Strap On**

This model is to suit all sedans. Standard size.

000957



**Fender Mirror Universal**

Suits most vehicles. Sold in pairs

000988



**Towing Mirror Across Bonnet**

Mounts to the bonnet and allows the bonnet to open independently. Telescopic arms for easy adjustment

**FEATURES:**

- Sturdy, dependable, Australian made mirrors
- Set of 2 mirrors black trim
- Bar and fitting kit
- Black trim

000987



**Towing Mirror Strap On Convex Standard With Convex Mirrors**

Dual strap on mirror, suits 4WD.

**SPECIFICATIONS:**

- 2/3 flat clear glass fixed on mirror
- 1/3 adjustable convex lens

000986



**Ora Towing Mirror - Clip On**

Suits 2WD and 4WD vehicles.

**FEATURES:**

- This mirror can be extended and swiveled horizontally and vertically
- Easily installed and removed
- Clear visibility when towing vans up to 2.4m wide
- Easily adjusted from inside car
- Sold in pairs

000962

**Towing Mirrors**



**Coppa Rossa Door Mirror-Single**

The Rossa (Coppa Rossa), not only looks great but is an extremely stable and effective towing mirror. Suits both sides of towing vehicle.

The new model features a longer arm, an improved mounting device, and a bracing arm that cleverly attaches to the car door with a suction cap. The unit is easy to install and, once in place, is very strong and stable.

The mounting device is designed to provide a snug fit to the most awkward of side mirror shapes. Curved side mirrors are no longer a problem. The towing mirror itself can be adjusted and swiveled to suit a variety of positions.

The addition of the suction support brace will prevent any vibration drivers often experience with clip-on mirrors. Fold-in often occurs in windy conditions or with a strong draft caused by oncoming traffic (trucks in particular) thereby bending the mirror inwards. Vehicles with weak springs in their existing wing mirrors are particularly susceptible to this.

**FEATURES:**

- Fits most vehicles, strong and stable
- Vibration resistant
- Easily installed and removed
- No tools needed
- The addition of the suction support arm will prevent any problems drivers sometimes experience with

000969



**Enzo Towing Mirror - Mag Mirror**

These mirrors can attach to most cars and 4WD doors by way of strong non scratching plastic clip that slides down beside the drivers window and double size magnetic pads.

**FEATURES:**

- Easy to fit and remove and to adjust from the interior of vehicle
- Stable, safe and practical to use
- Adaptable to many vehicles
- Vibration resistant
- Magnet has anti-scratch fabric attached for protection of bodywork

000964



**Ora Torino Towing Mirror**

One of the newest quality door mounted mirrors available and is ideal for towing boats, trailers, caravans and horse floats. Torino locks in the car door's window cavity. The tension of the strap can be adjusted by sliding the clip up or down. There are no exposed metal components that will rub or scratch the vehicle.

**FEATURES:**

- Easy to install
- Long adjustable arm - 450mm
- Knock back safety - folds in if the mirror comes into contact with anything
- Fully adjustable
- Hook on fittings

034303



**Big Red Towing Mirror**

Big Red mirror is European designed and manufactured to suit tough Australian conditions. Suitable for wider loads. Big Red extends a massive 500mm from the existing side mirror giving unparalleled vision down the side of the vehicle (car/boat/van). The unit can be installed in seconds with no tools required and also easily removed for safe storage upon reaching destination.

**FEATURES:**

- Extra wide vision
- Fits securely to the existing wing mirror with magnetic support for additional stability
- Won't scratch paintwork
- Strong quality non corrosive materials
- Magnetic pads protected by an anti-scratch material, Mirror clamp can be installed on atop or below the cars mirrors.

000968

**Coppa Rosa/Ora Towing Mirror Spare Parts**

COPPA ROSSA MIRROR SUPPORT ARM	000970
COPPA ROSSA MIRROR KNOB ALSO SUITS NEW STYLE ORA	000972
COPPA ROSSA MIRROR RUBBER DISC ALSO SUITS NEW STYLE ORA	000973
COPPA ROSSA MIRROR SUCTION CUP	000975
COPPA ROSSA MIRROR "T" PIECE	000976
COPPA ROSSA SUCTION SUPP KIT ARM/CUP/TRIANGLE SUITS NEW STYLE ORA	000979
ORA TOWING MIRROR - LONG ARM SET PAIR	001003
ORA TOWING MIRROR - STANDARD ARM	001004
ORA TOWING MIRROR - MAG SUPPORT	001007
ORA TOWING MIRROR EXTENSION STRAP WITH SUCTION CUP OLD ORA	001011
ORA TOWING MIRROR - MIRROR HEAD	001013
ORA TOWING MIRROR TRIANGULAR MOUNT NEW ORA AND COPPA ROSSA	001016
ORA HOOK STRAP SUIT MK3 2100 MIRROR	038125

Towing Aids, Weight Distribution Hitch



**Camec Weight Distribution Kit**

Restores natural balance of your tow vehicle when towing a trailer with laden ball weight between 80kg to 135kg. The kit utilises a four bar (4 x 19mm) system. The snap up brackets make raising and

lowering the chain effortless. Triangular plates mean you can adjust and equalize each pair of bars together.

**FEATURES:**

- Includes snap-up bracket handle.
- For use with any style tow bar using a 50mm tow ball.

041128



**Hayman Reese Classic Medium Duty Weight Distribution**

Distributes the ball weight across both axles of the tow vehicle to restore the correct steering and suspension geometry, braking efficiency and headlight alignment.

**FEATURES:**

- Trunnion Style 30 inch Spring Bar
- WDH head includes integrated friction sway tab
- Compatible with dual cam sway control (not included)
- Drop shank allows for 6 incremental height adjustments.
- Hex Cam adjustment washer allows for up to 6 head angle adjustments.

CLASSIC SERIES:	SPRING BAR	MAX TOWING WEIGHT	CODE
600LB	28 inch	135 - 275kg	040082
600LB	30 inch	135 - 275kg	040081
800LB	28 inch	275 - 365kg	040084
800LB	30 inch	275 - 365kg	040083



**Hayman Reese Standard Medium Duty Weight Distribution**

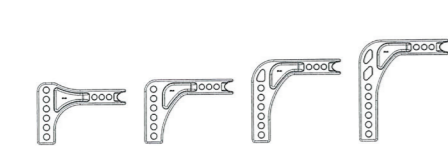
Distributes the ball weight across both axles of the tow vehicle to restore the correct steering and suspension geometry, braking efficiency and headlight alignment.

**FEATURES:**

- Round/under slung 30 inch spring bar
- WDH head includes intergrated friction sway tab
- Compatible with dual cam sway control (not included)
- Drop shank allows for 6 incremental height adjustments.
- Hex Cam adjustment washer allows for up to 6 head angle adjustments.
- Suitable for "A" Frames up to 6"

CLASSIC SERIES:	SPRING BAR	MAX TOWING WEIGHT	CODE
600LB	30 inch	135 - 275kg	040572
600LB	30 inch round	135 - 275kg	041822
800LB	30 inch	275 - 365kg	040468
800LB	30 inch round	275 - 365kg	041823

040085



**Hayman Reese Drop Shank**

Hayman Reese have a range of drop shanks available to setup the system on 4WD's and other vehicles where the lowest/highest setting is not low/high enough.

HAYMAN REESE DROP SHANK STANDARD	50150	040469
HAYMAN REESE DROP SHANK 30MM	50151	040470
HAYMAN REESE DROP SHANK 95MM	50152	040471
HAYMAN REESE DROP SHANK 160MM	50153	040472



**Hayman Reese 1200Lb Super Heavy Duty Weight Distribution Hitch 30 Inch Spring Bars 712003**

**FEATURES:**

- WDH head includes intergrated Friction Sway tab
- Compatible with Dual Cam Sway control (not included)
- Drop shank allows for 6 incremental height adjustments.
- Manufactured for serious heavy duty towing, it has a fine tooth adjustment washer which allows for up to nine head angle adjustments

040085

Towing Aids, Weight Distribution Hitch



**Hayman Reese Dual Cam Sway Control 26002**

The Hayman Reese Dual Cam High-Performance Sway Controller is the premier method of controlling sway, and the only product of its kind in the Australian market.

Unlike other sway controllers, this approach works to control sway from the start rather than just resisting sway once it's begun. When towing in a straight line, the spring bars on either side of the trailer's A-frame are locked in position. This essentially creates a 'rigid' connection between tow vehicle and trailer and minimises the effects of induced sway caused by high crosswinds or passing vehicles. Usually the spring bars ride in a locked-in position, even on fairly sharp curves.

However, when cornering manoeuvres are required, the cams automatically slide out of their fixed position to permit full radius turns. Yet when the manoeuvre is short and abrupt, like that encountered in the event of a sudden swerve or a wheel dropping off the road, the spring bars seek a straight-line towing angle that helps the tow vehicle retain control.

The advantage of the Dual Cam system is its ability to prevent sway in addition to sway resistance. It works to hold down the start of swaying activity while at the same time allowing free and easy vehicle and trailer interaction. Another advantage of the Dual Cam system is that it's installed on the trailer and therefore doesn't require adjustment every time the towing vehicle and trailer are hooked up, unless hitch weight or tow vehicle loading are changed.

The Dual Cam HP is fitted in conjunction with any Heavy Duty Hayman Reese Weight Distribution System that includes high performance spring bars with Cams. It is ideal for any trailers with a ball weights in excess of 200kg.

000832



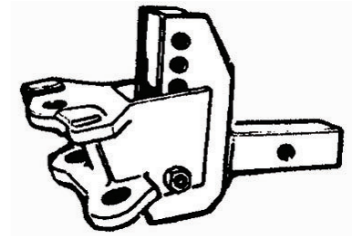
**Hayman Reese Friction Sway Control**

Trailer sway is one of the most common concerns for those who tow. The Friction Sway controller manages sway by using friction material, (similar to what is used in modern disk brake pad) and a sliding bar with an adjustable lever to regulate the movement of the trailer. All current Weight Distribution System heads come with a mounting tab to enable use of this sway controlling device. Trailer sway can be influenced by poor weight distribution, tyre pressure, towing speed and suspension. But most commonly it is caused by strong winds and wind buffets from large vehicles such as trucks.

**FEATURES:**

- Installed and removed easily
- Heavy construction for added reliability
- Friction brake keeps trailer and tow vehicle stable
- Quick attachment to trailer frame and ball mount

000825



**Hayman Reese A.B.M 550/750Lb With Shank 70000**

Suits Hayman Reese weight distribution bars. Ball not included.

000922



**Hayman Reese Snap-Up Bracket Only 21120**

For use with Hayman Reese hitch.

**FEATURES:**

- To suit weight distributing hitch
- Bolt (not included) screws into clamp bracket to A-Frame of caravan.
- Please note: These do not come with a bolt. The bolt is 1/2 inch x 2 1/2 inch UNC and are not grade specific

035311



**Hayman Reese Safety Chain Extension 10mm 06861**

Safety chain extension for laden trailers up to 2500kg. No welding is required - takes 10 minutes to install

**FEATURES:**

- In all states in Australia, safety chains are mandatory.
- The chains must attach between the A-frame or draw bar of the trailer to the main towbar framework.
- D shackle required - 12.5mm thick
- Do not attach to ball mount - may snap or become detached
- The tow bar should be rated to tow the load

035308



**Hayman Reese Tow Ball Mount Straight 21196**

Does not include towball

**SPECIFICATIONS:**

- Maximum towing capacity: 2250kg
- Suits 50mm hitch receiver

000886



**Hayman Reese Tow Ball Mount Adjustable 21187**

Adjustable holes allow for easier leveling of car and tow vehicle. Does not include towball

**SPECIFICATIONS:**

- Maximum towing capacity: 1500kg
- Suits 50mm hitch receiver

000884

Towing Aids, Weight Distribution Hitch



**Bolt Kit for Hayman Reese 70011**

Replacement bolt kit to suit Hayman Reese adjustable ball mount - refer code 000922.

**FEATURES:**

- Bolt Kit includes - bolts, nuts & washers.

000925



**Hayman Reese Safety Pin-Snap-Up Bracket 55180**

Stops snap up bracket from disengaging. Suit Hayman Reese weight distribution hitch.

**SPECIFICATIONS:**

- Diameter of pin: 4.7mm & outside
- Width: 30mm
- Weight: 20gms

000911



**Hayman Reese Hitch Pull Pin 55010**

Standard hitch pin with spring cotter pin to secure.

000915

Towing Aids, Weight Distribution Hitch



**Cast Head - 4-Bar Equalizer Painted Black**

The pre-drilled cast triangular shaped head is available as spare part.

**FEATURES:**

- Pitching and tail sway in caravan towing is usually due to the balance of caravan and the weight distribution on the towing vehicle.
- To obtain good towing, a caravan has to be 10-15% front heavy and with a caravan that is in excess of 35kg front heavy will be pushed ground wards and weight will be removed from the front wheels of the car, causing excessively light steering

Colour Black

000818



**Backsaver - Classic RV Towaid**

Adjustable mechanical aid to assist placing equalizer rods into chassis brackets - saves back muscles

000407



**Rclip - 3mm -For RV Towaid**

000811



**Hayman Reese Tow Ball Mount 12 21171**

Allows one wrench turning to tighten towball. Fits most popular vehicles.

035292



**Equalizer 6In A-Frame Bracket Kit**

Galvanised equalizer bracket set for use if you A-frame is more than 100mm deep. Suit 6in (150mm) A-frames.

**SPECIFICATIONS:**

- Length: 150mm
- Weight: 2.33kg
- Sold Pk/2

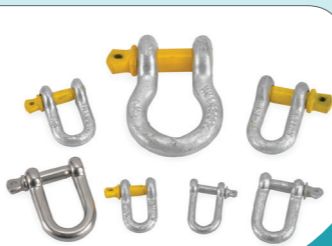
000822



**Equaliser A-Frame Bracket Kit Set Of 2**

Replacement equaliser brackets and B-Plates (with bolts) for those that forget to remove the brackets.

000820



**Shackles**

NAME	CODE
BOW SHACKLE 8MM (T/AID)	006731
BOW SHACKLE 10MM	006732

NAME	CODE
D SHACKLE & BRIM 5MM	006726
D SHACKLE & BRIM 6MM	006725
D SHACKLE & BRIM 8MM	006724
D SHACKLE & BRIM 10MM	006723
D SHACKLE & BRIM 12MM	006727

NAME	RATED	CODE
D SHACKLE & BRIM GAL 8MM	750kg	042783
D SHACKLE & BRIM GAL 10MM	1000kg	042784
D SHACKLE & BRIM GAL 11MM	1500kg	042785
D SHACKLE & BRIM GAL 13MM	2000kg	042786
D SHACKLE & BRIM GAL 20MM	4750kg	042787



**Weld-On 50mm A-Frame Bracket Only**

Weld-on brackets to suit 50mm wide A-frame chassis. Rails are available as optional to the bolt-on kit - simply as replacement parts or as extra fittings for other trailers.

**FEATURES:**

- Classic RV tow-aid can be used for all towing activities

000814

**Hayman Reese Tow Ball Mount Pintle Hook 195mm Long 21166**

Pintle Hooks are the alternative to the standard 50mm towball. Pintle Hooks are particularly used in commercial type applications.

**FEATURES:**

- Pintle hook adaptor to suit heavy duty 50mm x 50mm hitch receiver towbars

**SPECIFICATIONS:**

- Trailer ball mount with 195mm lug to suit pintle hook.
- Size: 210mm tube length, 83mm from pull pin hole to end of tube
- Maximum load weight: 3500kg

035295



**Tyredog 2 Wheel Monitor Pressure & Temperature Sensor & Relay**

The "TYREDOG" Tyre Pressure and Temperature Monitor kits support 2 to 10 tyres, monitors up to 180psi and can be installed easily. (D.I.Y).

The User Friendly Graphic Interface (LCD Monitor) allows the user to monitor and understand the status of their tyres thus ensuring they are always well maintained. Correct Tyre pressure ensures fuel efficiency, reduces tyre wear, the risk of aquaplaning and lack of traction.

Recommended for heavy duty vehicles, motorhomes, cars with trailers/caravans.

**FEATURES:**

- The Design: All sensors can be securely locked onto tyre valves for added safety
- Learn able sensors are available so in the event of theft or damage, sensors can be quickly and easily replaced
- Sensors have unique individual codes to ensure there is no interference from other 433MHz devices, even other "TYREDOG" systems
- All "TYREDOG" kits undergo strict field testing to ensure quality

- Sensors are treated for anti-corrosion during manufacture and use rubber seals to prevent liquid and fine particles from coming in contact with the circuitry

**SPECIFICATIONS:**

How it works: The Wireless Sensors are fitted to the wheels valve stem.

- Simply replace the valve cap with a Wireless Sensor and fit the supplied SecureFit ring to ensure the sensor is securely fastened.
- This SecureFit ring can also act as a theft deterrent
- The relay/repeater system must be mounted underneath the vehicle
- This can be powered up by 4 x AA batteries or you can hard-wire to a 12/24V power source
- Once the sensors and relay are fitted and the monitor/receiver is turned on (powered by 12/24V cigarette lighter adapter), within a couple of minutes or once the wheels rotate, the latest Pressure and Temperature information will be updated on the monitor/receiver

Tyredog 2 Wheel Monitor Pressure & Temperature Sensor & Relay	042527
Tyredog 4 Wheel Monitor Pressure & Temperature Sensor & Relay	042528
Tyredog 6 Wheel Monitor Pressure & Temperature Sensor & Relay	042529
Tyredog 8 Wheel Monitor Pressure & Temperature Sensor & Relay	042530



**Spring Bar - 4 - Bar Equalizer 16mm - Painted**

One equaliser rod only, suits CA 2 and 4 equaliser sets.

000819

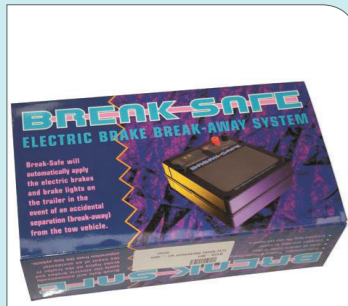


**Rego Label Holder Plastic Rectangular**

Suitable to be mounted next to a number plate on trailers and caravans.

000565

Brake Controllers & System



**Breakaway Kit 6000 Breaksafe**

Designed to automatically apply the electric brakes and brake lights on the trailer in the event of an accidental separation from the tow vehicle.

**FEATURES:**

- Automatically recharges when connected to tow vehicle.
- Compact and easy to install

**SPECIFICATIONS:**

Please note: A unit of this type must be installed on trailers in excess of 2000kg if built after July 1989

- Dimensions for monitor: 64mm(w) x 25mm(h) x 50mm(d)
- Weight: 80gm
- Two wire connections at rear - one is earth, one comes from the sensor
- Includes mounting screws & double sided tape (in case you do not want to drill)

BREAKAWAY KIT 6000 BREAKSAFE 000940  
BREAKSAFE REMOTE MONITOR RM6000 039363



**Camec Breakaway System Single or Dual Axle**

Suits caravans, trailers and horse floats & suits all electric brakes.

**FEATURES:**

- Charging of the battery can be done via the tow vehicle auxiliary line.
- Rechargeable battery included, manual test circuit and battery charge indicator.
- Single & dual axle, compact and easy to install.
- Includes breakaway switch

BREAKAWAY SYSTEM 040119  
REPLACEMENT BATTERY 5AMP 041767



**Camec Remote Battery Monitor To Suit Camec Break Away System**

The Camec Remote Battery Monitor is used in conjunction with the Camec Breakaway System, it delivers a visual and audible warning to the driver if the battery charge in the Camec Breakaway System falls to such a level that if the system is engaged it is incapable of maintaining brake actuation for at least 15 minutes.

It is highly recommended that the Camec Remote Battery Monitor is installed by a qualified Auto Electrician only  
041764



**Break Away Kit Hopkins**

The engager break away kit features simple wiring for easy installation.

Does not include any remote monitoring function and can not be used for RVs registered in NSW.

042758

Brake Controllers & System



**Brake Controller Prodigy 90185/90885**

Requires no manual leveling, is a break through among inertia-activated brake controls. Equipped with a self adjusting sensing device to allow for easy, flexible installation from nearly horizontal to vertical. It constantly adjusts itself to the position of the tow vehicle.

**FEATURES:**

- Allows application of more initial braking power when towing heavier trailers
- Inertia control works proportionally in reverse - great for backing into tough spots
- Diagnostic checks for proper connection or shorted magnet condition
- Power saving mode - reduces drain on battery when vehicle not in use

**SPECIFICATIONS:**

- Dimensions: 115mm(l) x 27mm(h) x 80mm(d)
- Weight: 520gms
- Made for up to 4 axle trailer brake systems

BRAKE CONTROLLER PRODIGY 90185/90885 000949  
PRODIGY POCKET MNT KIT 90185 000950  
PRODIGY 3FT HARNESS KIT 90185 000951



**Brake Controller Tekonsha P3 90195**

One of the advanced approach to trailer brake controls. Requires no manual leveling, self adjusting sensing device to allow for easy, flexible installation from nearly horizontal to nearly vertical. Will constantly adjust itself to the position of tow vehicle.

**FEATURES:**

- Allows the user to switch between electric & electric over hydraulic trailer brakes
- Highly advanced - easy to understand roadside diagnostics
- Easy access - controls upfront
- Compact dash hugging design
- Easy to use - clip mounting system

**SPECIFICATIONS:**

- Dimensions: 115mm(l) x 27mm(h) x 80mm(d)
- Weight: 650gms
- Made for up to 4 axle trailer brake systems

BRAKE CONTROLLER TEKONSHA P3 P3 90195 038367  
P3 DASH MOUNTING CLIP BRACKET 5904 040903  
P3 DASH MOUNTING CLIP 5901TEK 040902



**Brake Controller Sentinel 05350**

Sentinel brake controller is a simple operation, slim design and wide range of mounting options make it the perfect choice for today's towing vehicles. It has no moving parts or pendulums to adjust, it can be mounted in virtually any position.

**FEATURES:**

- Digital display, solid state, no moving parts, no hydraulic connections, no leveling required.
- Compact size, mounts anywhere inside passenger compartment.
- Advanced internal circuit protection to prevent damage if incorrectly wired
- No hydraulic connections
- No leveling required

**SPECIFICATIONS:**

- Includes mounting bracket, hardware and instructions.
- For use on 12V negative ground systems only.
- Smart click comparability offers plug & play functionality allowing a quick and easy connect to any smart click brake control body harness.

040752

**Breakaway Kit Tekonsha 2028**

Lockable breakaway kit for all single, tandem and tri-axle breakaway applications.

**FEATURES:**

- Kit contains polymer battery case with A-frame or post mounting bracket, 12V sealed rechargeable 5A battery.

BREAKAWAY KIT TEKONSHA 2028 000939  
BREAKAWAY SWITCH TEKONSHA MODEL 2010 000938



**Brake Controller Voyager 9030**

This easy to install electronic brake controller features advanced electronics that minimises false braking to give a smoother ride even on the roughest roads.

**FEATURES:**

- Compact and easy to install.
- Minimises false braking.
- Suits 2-4 magnets.
- Includes mounting kit

000947



**Brake Control Hayes Energize 3**

Energize III electronic brake controller is a sensing device that automatically monitors and measures tow vehicle deceleration and applies the trailer brakes in direct proportion. It reacts instantly to any change in brake pedal pressure and ensures controlled, smooth stops. It is available for all single and tandem trailers equipped with electronic brakes.

**FEATURES:**

- Compact, rugged case.
- Trailer/tow vehicle stop lights operate when trailer brakes are applied automatically or manually.
- Wide range of mounting positions
- Compatible with all electronic systems (ABS, Cruise, etc)
- Smooth, proportional trailer braking.

000937



Rollers Boat Trailer



**Poly Keel Roller 100mm**

Suitable for boat trailers.

**FEATURES:**

- Blue polypropylene.

**SPECIFICATIONS:**

- Dimensions: 100mm(w) x 17mm bore

Colour Blue

007653



**Rubber Self Centre Roller 150mm**

Suitable for boat trailers.

**SPECIFICATIONS:**

- Dimensions: 150mm(w) x 17mm bore

Colour Black

007656



**Rubber Curved Roller 200mm**

Suitable for boat trailers.

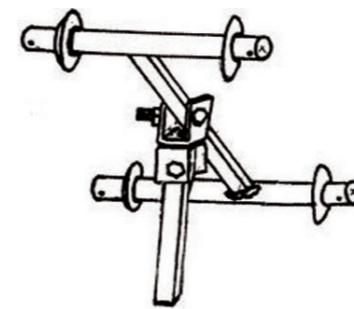
**SPECIFICATIONS:**

- Dimensions: 200mm(w) x 21mm bore

Colour Black

007658

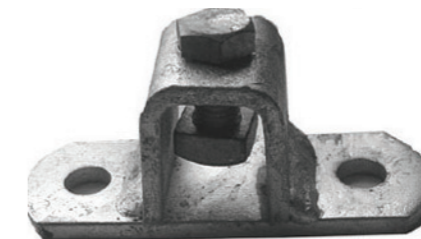
Rollers Boat Trailer



**Multi-way Galvanised Quad Wobble Bracket**

Allows four wobble rollers to be mounted onto a single post.

007679



**Multi-way Galvanised Bolt On Socket**

007684



**Multi-way Galvanised Post Clamp**

Dimensions: 50mm x 25mm

007686



**Rubber Ribbed Wobble Roller 75mm**

Suitable for boat trailers.

**SPECIFICATIONS:**

- Dimensions: 4inch(d) x 3inch(w) x 26mm bore

Colour Grey

007664



**Roller Galvanised Bracket & 2 Round Legs 150mm**

Suitable for boat trailers.

**FEATURES:**

- 2 round legs.
- Suit 150mm roller

007674



**Keel Roller Galvanised Spindle 75mm (Solid)**

Replacement spindle to suit 75mm roller.

**SPECIFICATIONS:**

- Dimensions: 75mm(w) x 16mm bore

007691



**Trailer Skid - 50mm x 12mm x 1.5M**

**FEATURES:**

- Blue trailer skid manufactured from Magnalene.
- Specially formulated for aluminum boats.

007645



**Keel Roller Galvanised Bracket**

Replacement bracket to suit keel roller.

KEEL ROLLER GALVANISED BRACKET 75MM

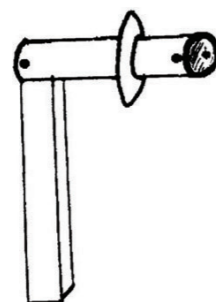
KEEL ROLLER GALVANISED BRACKET 100MM

KEEL ROLLER GALVANISED BRACKET 150MM

007667

007668

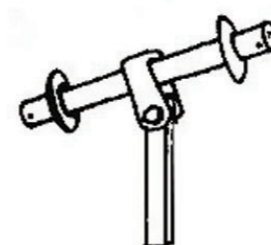
007669



**Multi-way Galvanised Single Wobble Bracket**

Mounts a single wobble roller onto a post.

007677



**Multi-way Galvanised Double Wobble Bracket**

Allows two wobble rollers to be mounted onto a single post.

007678



**Snatch Strap 50mm**

Dimensions: 50mm x 9m

Maximum weight load: 8000kg

035324



Trailer and Boat Winches



**Boat Winch 1:1 (250kg)**

Perfectly suited for quick boat retrieval onto a multi-roller trailer all 500 kg and above AL-KO Premium Marine Winches are multi speed with 2 or 3 speeds. The 1:1 ratio enables the initial retrieval of the boat onto the rollers allowing for the full weight of your boat to be pulled onto the trailer with ease.

**FEATURES:**

- Has a galvanised rectangular frame that provides high resistance to torsional distortion.

**SPECIFICATIONS:**

- Maximum weight load: 250kg
- BOAT WINCH 1:1 (250KG) 7.5m  
 ALKO BOAT WINCH 5:1 1:1 6m  
 ALKO BOAT WINCH 10:1 5:1 1:1 75m  
 ALKO WINCH HANDLE 190m

006694  
 035666  
 035667  
 035662

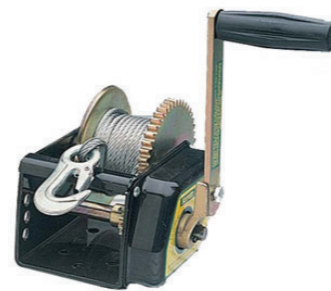


**Safety Winch Only**

**SPECIFICATIONS:**

- Maximum weight load: 500kg
- Cable not included

035669



**Winch (Braked)5:1 300Kg**

**FEATURES:**

- 5:1 300kg capacity with cable

006685

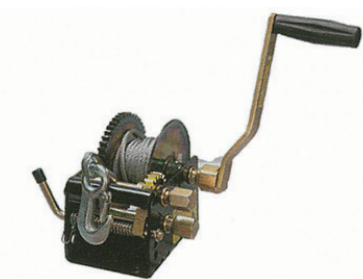


**Car Trail Winch 9.5:1 5:1 1:1**

**SPECIFICATIONS:**

- Maximum weight load: 1000kg
- Cable length: 7.5m

035664



**Boat Winch 3:1**

**FEATURES:**

- Includes light duty cable

**SPECIFICATIONS:**

- Maximum weight load: 500kg
- Cable Length: 6m

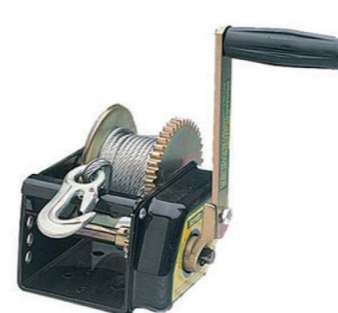
006680

**Boat Winch 3:1 With Webbing**

**SPECIFICATIONS:**

- Maximum weight load: 500kg
- Webbing strap: 6m

006690



**Winches**

WINCH JARRET MANUAL BRAKE WINCH, 5:1 300KG CAPACITY WITH CABLE

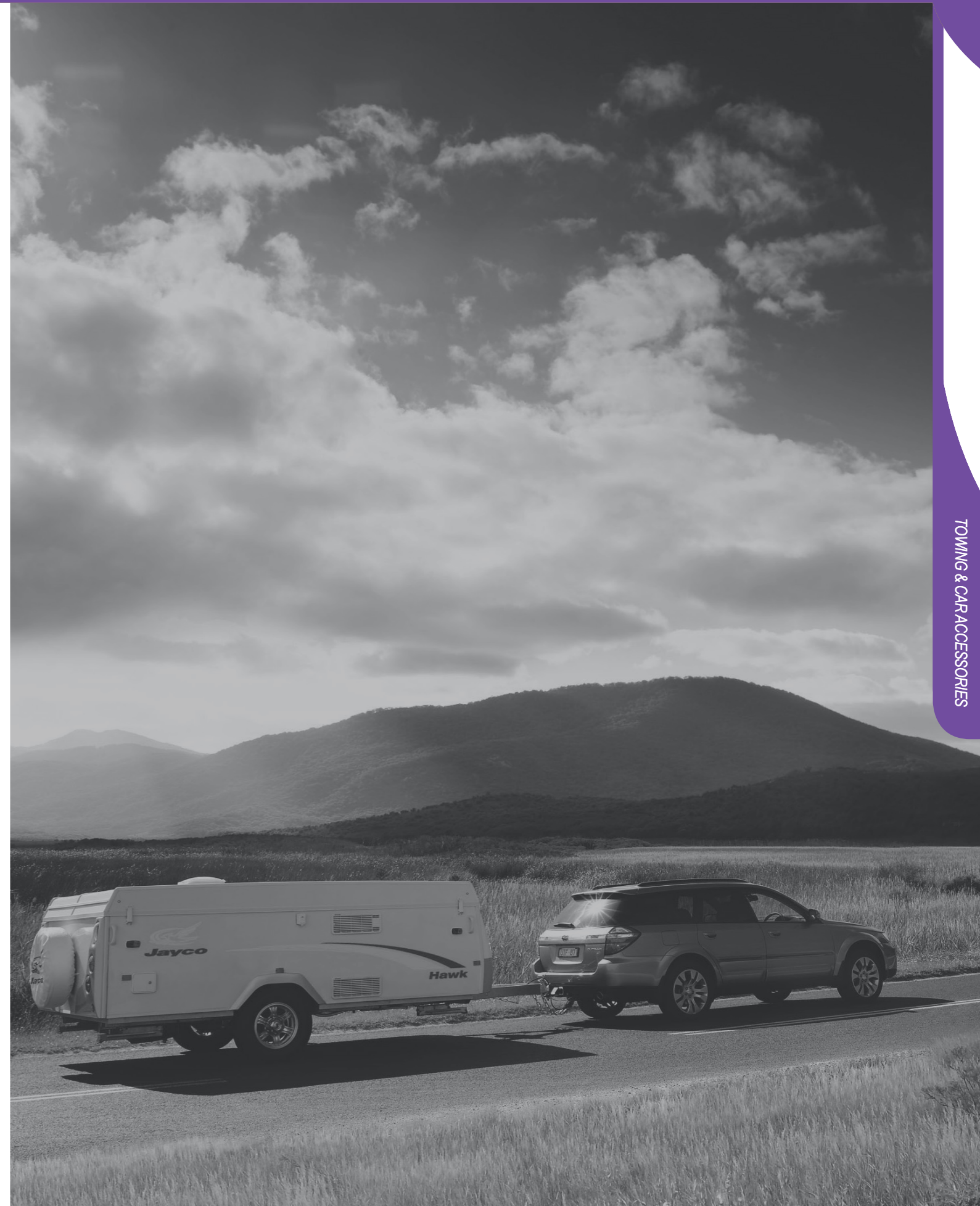
006685

WINCH JARRET MANUAL BRAKE WINCH, 10:1 500KG CAPACITY WITH CABLE

006686

WINCH HANDLE SUIT JARRETT HEX DRIVE

006720



TOWING & CAR ACCESSORIES



For all Trade and Retail Enquiries contact:

**SALES ENQUIRIES**

**National Customer Care Centre**

**Phone: 1300 4 Camec (1300 4 22632)**

**Fax: 03 9799 6488**

**Email: [camec@camec.com](mailto:camec@camec.com)**

**Website: [www.camec.com](http://www.camec.com)**

**TRADE & RETAIL**

**CAMEC  
HEAD OFFICE  
47-63 Remington Drive  
Dandenong South  
Victoria 3175  
Australia**

**CAMEC  
QUEENSLAND  
Building 3, Archerfield  
Industrial Park  
Cnr Kerry & Beaudesert Road  
Archerfield  
Queensland 4108  
Australia**

**CAMEC  
WESTERN AUSTRALIA  
190 Welshpool Road  
Welshpool  
Western Australia 6106  
Australia**

**CAMEC  
NSW  
No. 1 Koonya Circuit  
Caringbah NSW 2229  
Australia**

**CAMEC  
NEW ZEALAND  
44 Montgomerie Road  
Mangere  
Auckland 2022  
Ph: +64 09 257 2410  
Fx: +64 09 255 1910  
Email: [sales@camec.co.nz](mailto:sales@camec.co.nz)  
Web: [www.camec.co.nz](http://www.camec.co.nz)**