



**ALL TEAM**  
**SPORTS**



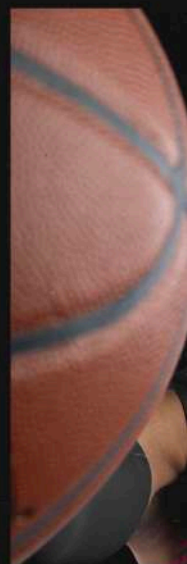
ASB  HOOPS

LOOK YOUR BEST.  
PLAY YOUR BEST.

Full court grind is **24/7/365.**

From the downtown playground  
to the high school gym, this is  
where your dream starts.

Embrace the grind and  
see where it takes you.







## LINE-UP

FreeStyle Sublimation Uniforms	<b>7</b>
Ladies FreeStyle Sublimation Uniforms	<b>21</b>
Stock Uniforms	<b>37</b>
Ladies Stock Uniforms	<b>47</b>
FreeStyle Sublimation Warm-Ups	<b>49</b>
Stock Warm-Ups	<b>55</b>
Training	<b>67</b>
Coaches	<b>73</b>
Bags	<b>75</b>



## PAINT THE COURT IN YOUR STYLE

Elevate Your Game with Custom Sublimated Basketball Uniforms Featuring Unmatched Designs, Colors & Fit!

DESIGN:  
FAST  
BREAK



FreeStyle It!

5 Easy Steps from Start to Finish with Fast 3D Rendering!





**RUSSELL  
ATHLETIC**

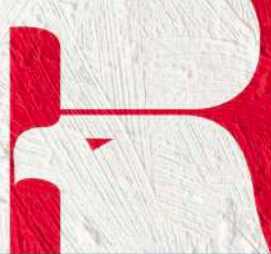


## BEYOND BOUNDARIES

Russell Athletic® is proud to offer a diverse range of basketball uniforms and designs that combine tradition with innovation and cater to every player's unique style.







**RUSSELL  
ATHLETIC**



**REVERSIBLE**



### FREESTYLE SUBLIMATED DYNASPEED REVERSIBLE JERSEY

**B10BNA** Adult  
S-4XL

**B10BNU** Youth  
S-XL

- 100% polyester body, 91% polyester/9% spandex binding
- Dri-Power® Moisture Wicking Technology

### FREESTYLE SUBLIMATED DYNASPEED REVERSIBLE SHORTS

**B12BNB** Adult  
S-4XL  
10" inseam

**B22BNB** Adult  
S-4XL  
Slim 8" inseam

**B26BNB** Adult  
S-3XL  
6" inseam

**B12BNU** Youth  
S-XL  
7" inseam

**B22BNU** Youth  
S-XL  
Slim inseam graded

**B26BNU** Youth  
S-XL  
5" inseam

- 100% polyester
- Dri-Power® Moisture Wicking Technology
- Covered elastic waistband with inside drawcord

### FREESTYLE SUBLIMATED DYNASPEED SOLID SHORTS

**B10BNB** Adult  
S-4XL  
10" inseam

**B20BNB** Adult  
S-4XL  
Slim 8" inseam

- 100% polyester
- Dri-Power® Moisture Wicking Technology
- Covered elastic waistband with inside drawcord

**DESIGN:**  
CAMERON  
CLASSIC







REVERSIBLE





DESIGN:  
SKYLINE



### FREESTYLE SUBLIMATED REVERSIBLE JERSEY

**228118** Adult  
S-3XL

**228218** Youth  
S-XL

- Dry-Excel™ 100% polyester single ply reversible closed hole mesh
- Tear away label



### FREESTYLE SUBLIMATED REVERSIBLE SHORTS

**228119** Adult  
S-3XL  
9" inseam

**228122** Adult  
S-3XL  
8" inseam

**228123** Adult  
S-3XL  
6" inseam

**228219** Youth  
S-XL  
8" inseam

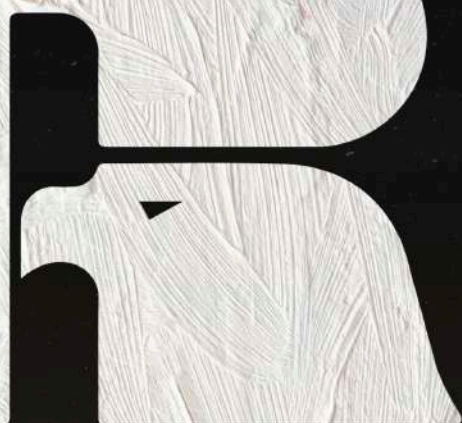
**228222** Youth  
S-XL  
7" inseam

**228223** Youth  
XS-XL  
5" inseam

- Dry-Excel™ 100% polyester single ply reversible closed hole mesh
- Tear away label
- Covered elastic waistband with inside drawcord
- Youth inseam graded







# RUSSELL ATHLETIC®

## FREESTYLE SUBLIMATED DYNASPEED JERSEY

**4B3VTA** Adult  
S-4XL

- 92% polyester/8% spandex engineered with ventilated stretch mesh
- Dri-Power® Moisture Wicking Technology

## FREESTYLE SUBLIMATED DYNASPEED SHORTS

**4B3VTB** Adult  
S-4XL  
10" inseam

**4R3VTB** Adult  
S-4XL  
Slim 8" inseam

**4R6VTB** Adult  
S-3XL  
6" inseam

- 92% polyester/8% spandex engineered with ventilated stretch mesh
- Dri-Power® Moisture Wicking Technology
- Covered elastic waistband with internal drawcord

**DESIGN:**  
DOMINANT















REVERSIBLE JERSEY



DESIGN:  
ALL STAR



**FREESTYLE  
SUBLIMATED LIGHTWEIGHT  
REVERSIBLE JERSEY**

**228125** Adult  
S-3XL

**228225** Youth  
XS-XL

- Dry-Excel™ 96% polyester/4% spandex single-ply reversible knit
- Tag-free label
- Garment protects against the sun with 50+ UPF



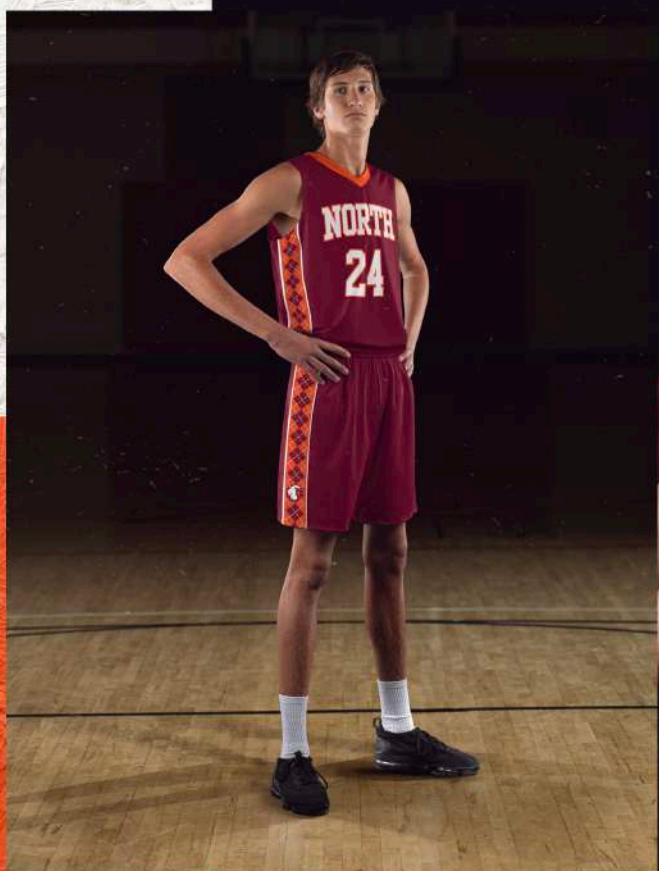
**FREESTYLE SUBLIMATED  
LIGHTWEIGHT SHORTS**

**228126** Adult  
S-5XL  
6" inseam

**228226** Youth  
XS-XL  
5" inseam

- Dry-Excel™ 96% polyester/4% spandex
- Tag-free label
- Covered elastic waistband
- Garment protects against the sun with 50+ UPF









**FREESTYLE SUBLIMATED  
4-WAY STRETCH JERSEY**

**228113**      Adult  
S-3XL

**228213**      Youth  
S-XL

- Dry-Excel™ Sof-Stretch™ Lightweight  
90% polyester/10% spandex knit



**FREESTYLE SUBLIMATED  
4-WAY STRETCH SHORTS**

**228121**      Adult  
S-3XL  
8" inseam

**228221**      Youth  
S-XL  
7" inseam

- Dry-Excel™ Sof-Stretch™ Lightweight  
90% polyester/10% spandex knit
- Gripper elastic waistband with quick cord
- Youth inseam graded

**DESIGN:**  
ARGYLE









DESIGN:  
DIGITAL  
WAVE



**FREESTYLE SUBLIMATED TURBO  
LIGHTWEIGHT JERSEY**

**228110** Adult  
S-3XL  
**228210** Youth  
S-XL

- Dry-Excel™ 100% polyester  
interlock smooth knit



**FREESTYLE SUBLIMATED  
LIGHTWEIGHT SHORTS**

**228111** Adult  
S-3XL  
10" inseam **TURBO**  
**228120** Adult  
S-3XL  
8" inseam **TURBO**  
**228124** Adult  
S-3XL  
6" inseam  
**228211** Youth  
S-XL  
9" inseam **TURBO**  
**228220** Youth  
S-XL  
7" inseam **TURBO**  
**228224** Youth  
XS-XL  
5" inseam

- Dry-Excel™ 100% polyester  
interlock smooth knit
- Gripper elastic waistband with quickcord
- Youth inseam graded



**DESIGN:**  
DOMINANT



**FREESTYLE SUBLIMATED  
TURBO SHOOTER SHIRT**

**551S2S**      Adult  
S-3XL

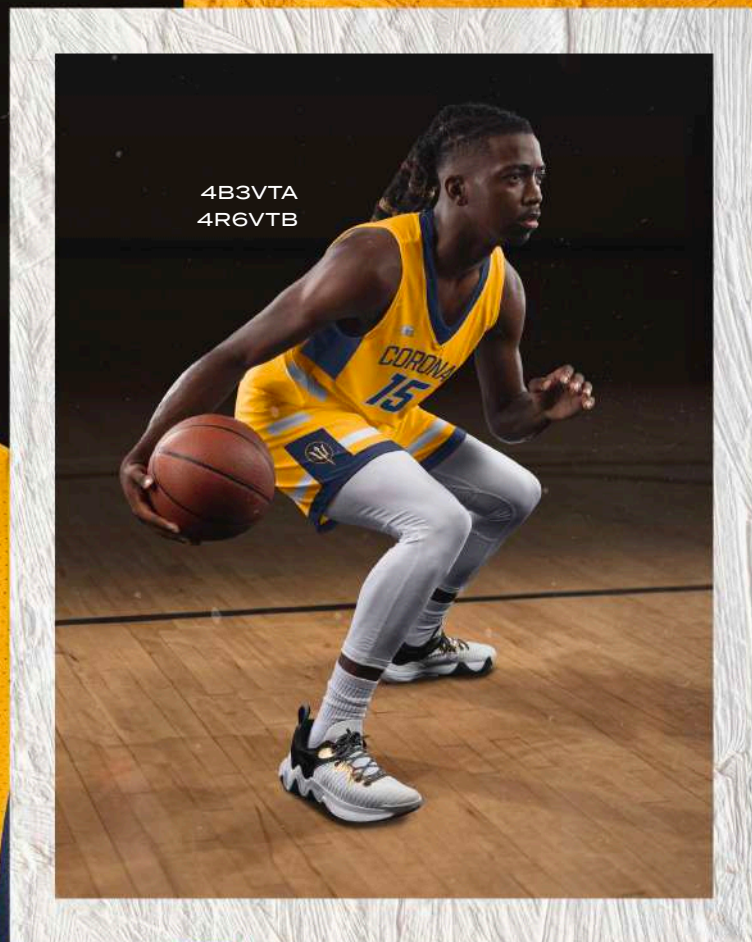
- 91% polyester/9% spandex engineered with lightweight, breathable stretch fabric for comfort and mobility
- Garment protects against the sun with 15+ UPF
- Dri-Power® Moisture Wicking Technology
- Athletic cut with tapered sleeves
- Tagless label

**RUSSELL  
ATHLETIC**





DESIGN:  
DOMINANT



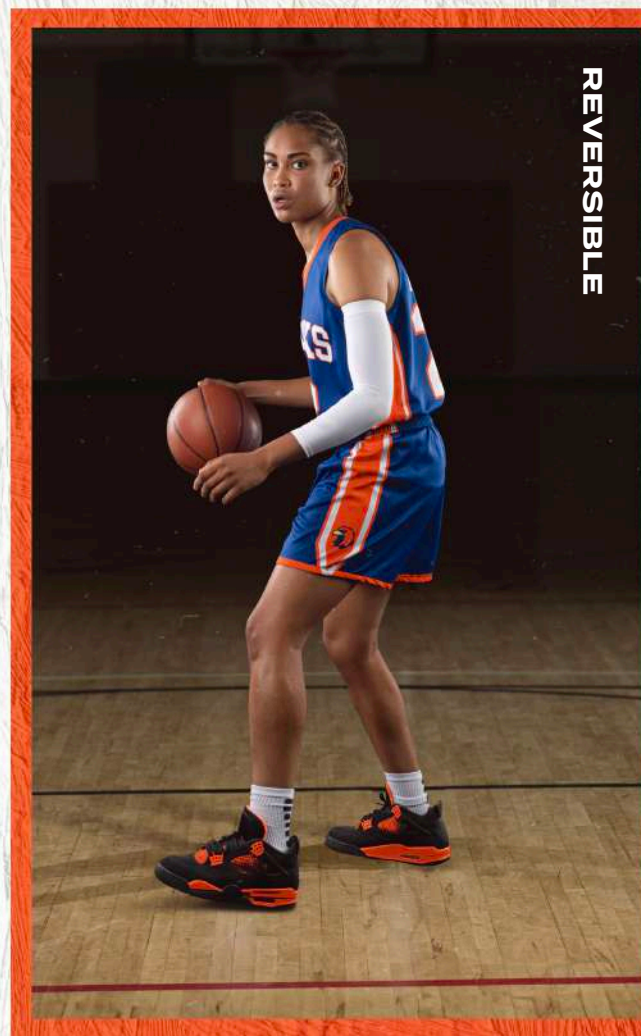
4B3VTA  
4R6VTB







**RUSSELL  
ATHLETIC**



**REVERSIBLE**





**DESIGN:**  
CAMERON  
CLASSIC

**LADIES FREESTYLE SUBLIMATED  
DYNASPEED REVERSIBLE JERSEY**

**B11BNA** Ladies  
S-3XL

- 100% polyester body, 91% polyester/9% spandex binding
- Dri-Power® Moisture Wicking Technology

**LADIES FREESTYLE SUBLIMATED  
DYNASPEED REVERSIBLE SHORTS**

**B12BNX** Ladies  
S-3XL  
8.5" inseam

**B22BNX** Ladies  
S-3XL  
Slim 7" inseam

**B26BNX** Ladies  
S-3XL  
6" inseam

- 100% polyester
- Dri-Power® Moisture Wicking Technology
- Covered elastic waistband with inside drawcord

**LADIES FREESTYLE SUBLIMATED  
DYNASPEED SOLID SHORTS**

**B11BNB** Ladies  
S-3XL  
8.5" inseam

**B21BNB** Ladies  
S-3XL  
Slim 7" inseam

- 100% polyester
- Dri-Power® Moisture Wicking Technology
- Covered elastic waistband with inside drawcord





REVERSIBLE





DESIGN:  
SKYLINE



**LADIES FREESTYLE  
SUBLIMATED  
REVERSIBLE JERSEY**

**228318** Ladies  
XS-2XL

- Dry-Excel™ 100% polyester single ply reversible closed hole mesh
- Tear away label



**LADIES FREESTYLE  
SUBLIMATED  
REVERSIBLE SHORTS**

**228319** Ladies  
XS-2XL  
8" inseam

**228322** Ladies  
XS-2XL  
7" inseam

**228323** Ladies  
XS-2XL  
6" inseam

- Dry-Excel™ 100% polyester single ply reversible closed hole mesh
- Tear away label
- Covered elastic waistband with inside drawcord









DESIGN:  
TITLE  
SHOT

## LADIES FREESTYLE SUBLIMATED DYNASPEED JERSEY

**7B3VTA** Ladies  
S-3XL

- 92% polyester/8% spandex engineered with ventilated stretch mesh
- Dri-Power® Moisture Wicking Technology

## LADIES FREESTYLE SUBLIMATED DYNASPEED SHORTS

**7B3VTB** Ladies  
S-3XL  
8.5" inseam

**7R3VTB** Ladies  
S-3XL  
Slim 7" inseam

**7R6VTB** Ladies  
S-3XL  
6" inseam

- 92% polyester/8% spandex engineered with ventilated stretch mesh
- Dri-Power® Moisture Wicking Technology
- Covered elastic waistband with internal drawcord









DESIGN:  
ALL STAR

REVERSIBLE JERSEY



NEW

**LADIES FREESTYLE  
SUBLIMATED LIGHTWEIGHT  
REVERSIBLE JERSEY**

**228325** Ladies  
XS-3XL

- Dry-Excel™ 96% polyester/4% spandex
- Tag-free label
- Racerback styling



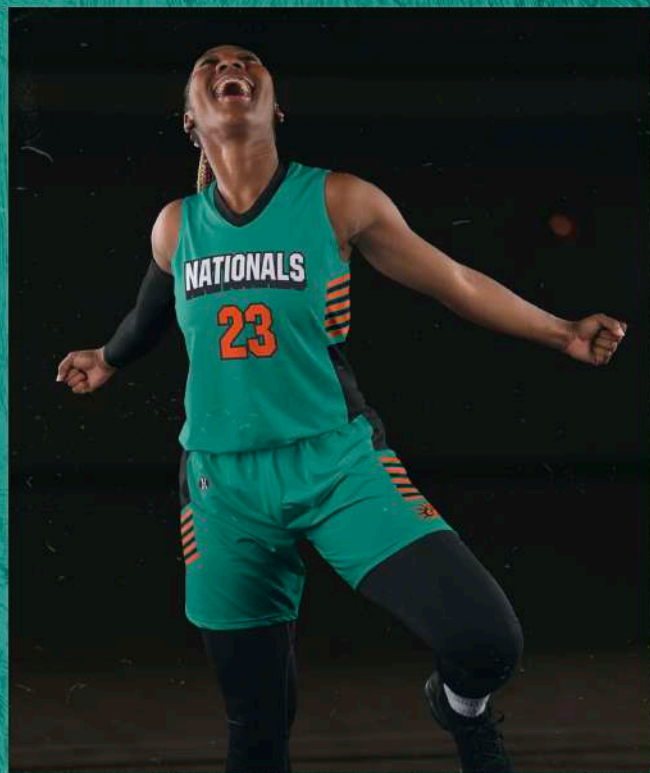
NEW

**LADIES FREESTYLE  
SUBLIMATED  
LIGHTWEIGHT SHORTS**

**228326** Ladies  
XS-3XL  
6" Inseam

- Dry-Excel™ 96% polyester/4% spandex
- Tag-free label
- Covered elastic waistband
- Garment protects against the sun with 50+ UPF









**LADIES FREESTYLE  
SUBLIMATED  
4-WAY STRETCH JERSEY**

**228315** Ladies  
XS-2XL

- Dry-Excel™ Sof-Stretch™ Lightweight  
90% polyester/10% spandex knit



**LADIES FREESTYLE  
SUBLIMATED  
4-WAY STRETCH SHORTS**

**228314** Ladies  
XS-2XL  
8" inseam

**228321** Ladies  
XS-2XL  
7" inseam

- Dry-Excel™ Sof-Stretch™ Lightweight  
90% polyester/10% spandex knit
- Gripper elastic waistband with quick cord

**DESIGN:**  
PARAMOUNT









DESIGN:  
FALL AWAY



**LADIES FREESTYLE  
SUBLIMATED 4-WAY STRETCH  
RACERBACK JERSEY**

**228313** Ladies  
XS-2XL

- Dry-Excel™ Sof-Stretch™ Lightweight  
90% polyester/10% spandex knit
- Racerback styling



**LADIES FREESTYLE  
SUBLIMATED  
4-WAY STRETCH SHORTS**

**228314** Ladies  
XS-2XL  
8" inseam

**228321** Ladies  
XS-2XL  
7" inseam

- Dry-Excel™ Sof-Stretch™ Lightweight  
90% polyester/10% spandex knit
- Gripper elastic waistband with quick cord











**LADIES FREESTYLE  
SUBLIMATED  
TURBO JERSEY**

**228316** Ladies  
XS-2XL

- Dry-Excel™ 100% polyester smooth wicking knit body
- 100% polyester pinhole mesh back



**LADIES FREESTYLE  
SUBLIMATED TURBO LIGHTWEIGHT  
RACERBACK JERSEY**

**228310** Ladies  
XS-2XL

- Dry-Excel™ 100% polyester interlock smooth knit
- Racerback styling



**LADIES FREESTYLE  
SUBLIMATED  
LIGHTWEIGHT SHORTS**

**228311** Ladies  
XS-2XL  
8" inseam **TURBO**

**228320** Ladies  
XS-2XL  
7" inseam **TURBO**

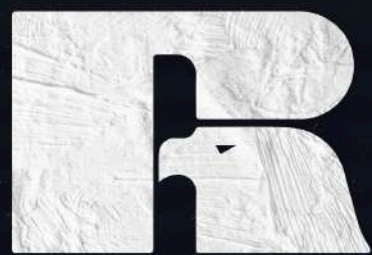
**228324** Ladies  
XS-3XL  
6" inseam

- Dry-Excel™ 100% polyester wicking smooth knit
- Gripper elastic waistband with quickcord

**DESIGN:**  
DIGITAL  
WAVE



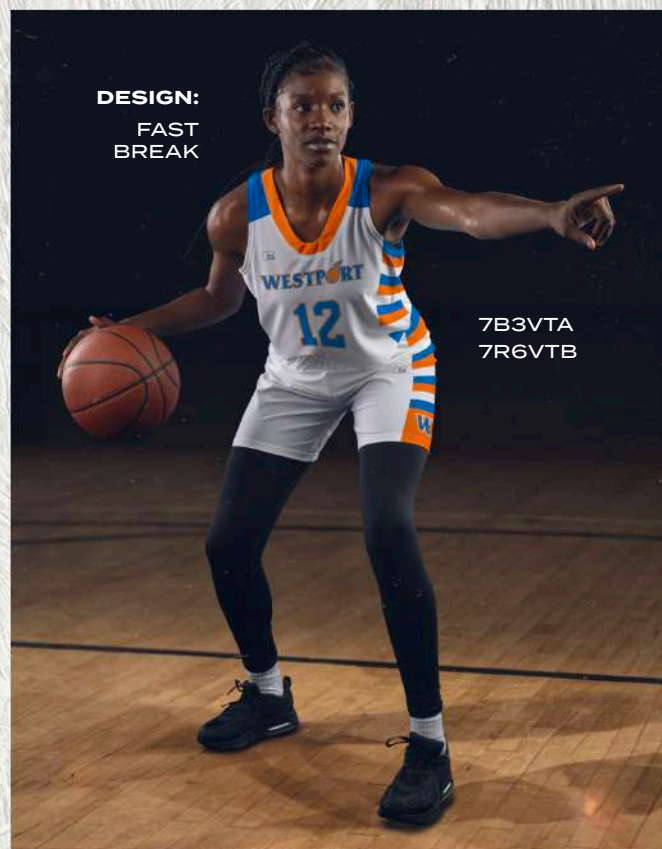




**RUSSELL  
ATHLETIC**



**DESIGN:**  
FAST  
BREAK



7B3VTA  
7R6VTB





**LADIES FREESTYLE  
SUBLIMATED TURBO  
SHOOTER SHIRT**

**551S2X** Ladies  
S-3XL

- 91% polyester/9% spandex engineered with lightweight, breathable stretch fabric for comfort and mobility
- Garment protects against the sun with 15+ UPF
- Dri-Power® Moisture Wicking Technology
- Athletic cut with tapered sleeves
- Tagless label

**DESIGN:**  
MARDI  
GRAS










**SWISH  
REVERSIBLE JERSEY**

**6927** Adult  
S-2XL

**6928** Youth  
S-L

- Two layers of 100% polyester wicking knit with color secure® technology that helps prevent dye migration
- Outside locker label
- Fully reversible
- Each layer hemmed separately for easy embellishment


**SWISH  
REVERSIBLE SHORTS**

**6929** Adult  
S-2XL

**6930** Youth  
S-L

- Two layers of 100% polyester wicking knit with color secure® technology that helps prevent dye migration
- Tear away label
- Covered elastic waistband with inside drawcord
- Fully reversible
- 6.5-inch inseam
- Youth inseam graded







MATCH-UP





## COORDINATING LADIES

6888 pg. 49



## MATCH-UP JERSEY

6886 Adult  
S-3XL6887 Youth  
S-XL

- 100% polyester wicking knit with color secure® technology that helps prevent dye migration
- Tagless label
- Outside locker label
- Designed to be NFHS compliant



## MATCH-UP SHORTS

6889 Adult  
S-3XL6890 Youth  
S-XL

- 100% polyester wicking knit with color secure® technology that helps prevent dye migration
- Tagless label
- Covered elastic waistband with inside drawcord
- Side vent
- 6.5-inch inseam
- Youth inseam graded
- Designed to be NFHS compliant

BLACK/  
WHITE  
420COLUMBIA  
BLUE/  
WHITE  
293DK GREEN/  
WHITE  
438GOLD/  
WHITE  
245GRAPHITE/  
WHITE  
R04MAROON/  
WHITE  
380NAVY/  
WHITE  
301ORANGE/  
WHITE  
320PURPLE/  
WHITE  
450ROYAL/  
WHITE  
280SCARLET/  
WHITE  
408WHITE/  
GRAPHITE  
V751





STEP-BACK





COORDINATING LADIES  
1732 pg. 47



### STEP-BACK JERSEY

**1730** Adult  
S-3XL

**1731** Youth  
S-XL

- 100% polyester wicking knit with color secure® technology that helps prevent dye migration
- Updated tailored fit
- Tagless label
- Outside locker label
- Designed to be NFHS Compliant



### STEP-BACK MODERN FIT SHORTS

**1736** Adult  
S-3XL

**1737** Youth  
S-XL

- 100% polyester wicking knit with color secure® technology that helps prevent dye migration
- Updated tailored fit
- Tagless label
- Covered elastic waistband with inside drawcord
- 6-inch inseam
- Youth inseam graded
- Designed to be NFHS Compliant



### STEP-BACK SHORTS

**1733** Adult  
S-3XL

**1734** Youth  
S-XL

- 100% polyester wicking knit with color secure® technology that helps prevent dye migration
- Updated tailored fit
- Tagless label
- Covered elastic waistband with inside drawcord
- 8-inch inseam
- Youth inseam graded
- Designed to be NFHS Compliant

BLACK/ WHITE 420	COLUMBIA BLUE/ WHITE 293	DARK GREEN/ WHITE 438	GOLD/ WHITE 245
GRAPHITE/ WHITE R04	MAROON/ WHITE 380	NAVY/ WHITE 301	ORANGE/ WHITE 320
PURPLE/ WHITE 450	ROYAL/ WHITE 280	RED/ WHITE 400	WHITE/ BLACK 226
WHITE/ NAVY 221	WHITE/ RED 225	WHITE/ ROYAL 220	WHITE/ SILVER E64





TIP-OFF







# TIP-OFF SHOOTER SHIRT

**1728**  
S-3XL

Adult

- 100% polyester wicking knit with color secure® technology that helps prevent dye migration
- 92% polyester/8% spandex wicking pinhole mesh sleeve insert and back yoke with color secure® technology
- Tagless label
- Set-in sleeves



BLACK/  
WHITE  
420



GRAPHITE/  
WHITE  
R04



NAVY/  
WHITE  
301



ROYAL/  
WHITE  
280

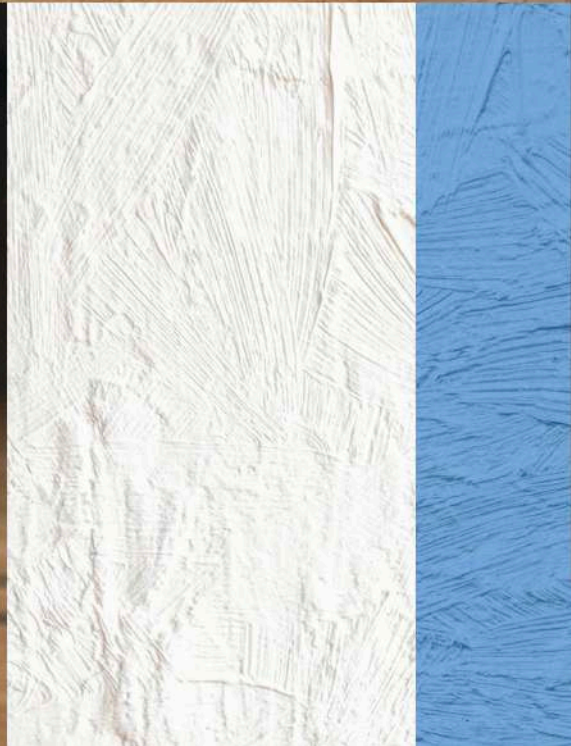


SCARLET/  
WHITE  
408





MATCH-UP





COORDINATING ADULT | YOUTH  
**6886 | 6887 | 6889 | 6890** pg. 39



### LADIES MATCH-UP JERSEY

**6888** Ladies  
 XS-2XL

- 100% polyester wicking knit with color secure® technology that helps prevent dye migration
- Tagless label
- Outside locker label
- V-neck collar
- Designed to be NFHS compliant

BLACK/ WHITE 420	COLUMBIA BLUE/ WHITE 293	DK GREEN/ WHITE 438	GOLD/ WHITE 245	GRAPHITE/ WHITE R04	MAROON/ WHITE 380
NAVY/ WHITE 301	ORANGE/ WHITE 320	PURPLE/ WHITE 450	ROYAL/ WHITE 280	SCARLET/ WHITE 408	WHITE/ GRAPHITE V751

6889  
 pg. 35





STEP-BACK





COORDINATING ADULT | YOUTH  
1730 | 1731 | 1733 | 1734 pg. 41



### LADIES STEP-BACK JERSEY

**1732** Ladies  
XS-2XL

- 100% polyester wicking knit with color secure® technology that helps prevent dye migration
- Updated tailored fit
- Tagless label
- Outside locker label
- Racerback styling
- Designed to be NFHS compliant



### LADIES STEP-BACK MODERN FIT SHORTS

**1738** Ladies  
XS-2XL

- 100% polyester wicking knit with color secure® technology that helps prevent dye migration
- Updated tailored fit
- Tagless label
- Covered elastic waistband with inside drawcord
- 5-inch inseam
- Designed to be NFHS Compliant



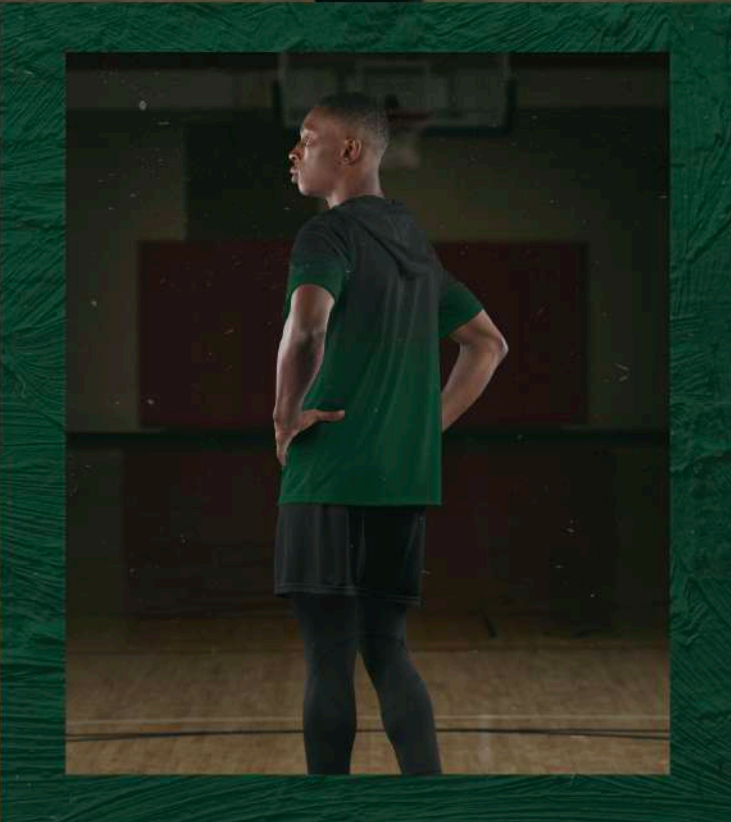
1734  
pg. 41



A young man with short dark hair is sitting on a black folding chair. He is wearing a green short-sleeved jersey with 'JAGUARS' in white block letters and a white jaguar head logo below it. He is also wearing black athletic pants. He is holding a brown basketball with both hands in his lap. He is looking off to the side with a serious expression. The background is dark and out of focus, with a single orange light visible. The overall mood is dramatic and focused.

**DESIGN:**  
GRADIENT





**DESIGN:**  
BLOCK  
STRIPE



**FREESTYLE SUBLIMATED  
COTTON-TOUCH POLY  
SHORT SLEEVE HOODIE**

**228175** Adult  
S-3XL

**228275** Youth  
S-XL

- 5.6 ounce 95% polyester/ 5% spandex wicking knit
- Inside of hood cannot be sublimated because it is a single layer
- Heat sealed label
- Overlapping hood
- Set-in sleeves

**DESIGN:**  
GRADIENT  
EXPLOSION



**FREESTYLE SUBLIMATED  
LONG SLEEVE HOODIE**

**228143** Adult  
S-4XL

**228243** Youth  
S-XL

- Dry-Excel™ 100% polyester wicking knit
- Inside of hood cannot be sublimated because it is a single layer
- Garment protects against the sun with 50+ UPF
- Tagless label
- Overlapping hood
- Set-in sleeves

**DESIGN:**  
TRI-TOURNEY



**LADIES FREESTYLE  
SUBLIMATED  
LONG SLEEVE HOODIE**

**228343** Ladies  
S-3XL

- Dry-Excel™ 100% polyester wicking knit
- Inside of hood cannot be sublimated because it is a single layer
- Garment protects against the sun with 50+ UPF
- Tagless label
- Overlapping hood
- Set-in sleeves





**DESIGN:**  
SPECTATOR



**FREESTYLE SUBLIMATED  
SLEEVELESS HOODIE**

**228147** Adult  
S-3XL

**228247** Youth  
S-XL

- Dry-Excel™ 100% polyester wicking knit
- Garment protects against the sun with 50+ UPF
- Tagless label
- Overlapping hood
- Set-in sleeves

**DESIGN:**  
CUTTER



**FREESTYLE SUBLIMATED TURBO  
LONG SLEEVE TRAINING TEE**

**228112** Adult  
XS-3XL

**228212** Youth  
S-XL

- Dry-Excel™ 100% polyester wicking smooth knit
- Garment protects against the sun with 50+ UPF
- Set-in sleeves

**DESIGN:**  
MARBLE



**FREESTYLE SUBLIMATED  
TRAINING SHORTS**

**228181** Adult  
S-3XL

**228281** Youth  
S-XL

- Dry-Excel™ 100% polyester smooth wicking knit body
- Garment protects against the sun with 50+ UPF
- Covered elastic waistband with inside drawcord
- Side seam pockets
- 10-inch inseam
- Youth inseam graded

**DESIGN:**  
FADED  
CHEVRON



**DESIGN:**  
GRADIENT











Varsity

Varsity



Quad



NEW

### FREESTYLE SUBLIMATED FULL ZIP JACKET

**228156** Adult S-3XL

**228256** Youth S-XL

- Dry-Excel™ 5.9 ounce 100% polyester performance wicking fleece and brushed back for added warmth
- Tear away label
- Set-in sleeves
- Side seam pockets
- Self-fabric cuffs
- Open bottom



NEW

### FREESTYLE SUBLIMATED PANT

**228157** Adult S-3XL

**NEW** Adult Tall ST-2XLT

**228257** Youth S-XL

- Dry-Excel™ 5.9 ounce 100% polyester performance wicking fleece and brushed back for added warmth
- Tear away label
- Covered elastic waistband with inside drawcord
- Side seam pockets
- Tapered leg
- Zipper on outside lower leg





Varsity

Varsity



Quad



NEW

### LADIES FREESTYLE SUBLIMATED FULL ZIP JACKET

228356 Ladies S-2XL

- Dry-Excel™ 5.9 ounce 100% polyester performance wicking fleece and brushed back for added warmth
- Tear away label
- Set-in sleeves
- Side seam pockets
- Self-fabric cuffs
- Open bottom



NEW

### LADIES FREESTYLE SUBLIMATED PANT

228357 Ladies S-2XL  
NEW Ladies Tall ST-XLT

- Dry-Excel™ 5.9 ounce 100% polyester performance wicking fleece and brushed back for added warmth
- Tear away label
- Covered elastic waistband with inside drawcord
- Side seam pockets
- Tapered leg
- Zipper on outside lower leg





CROSSTOWN







Dry-Excel™

NEW

### CROSTOWN WARM-UP JACKET

<b>223530</b> S-3XL	Adult
<b>223630</b> S-L	Adult Tall
<b>223730</b> S-2XL	Youth
	Ladies
	Ladies Tall

NEW MT-2XLT

- Dry-Excel™ 100% polyester double-knit
- Dry-Excel 100% polyester mesh inserts
- Ladies' fit on style 223730
- Set-in sleeves
- Front zippered pockets
- Open bottom
- Dropped tail

Dry-Excel™

NEW

### CROSTOWN WARM-UP PANT

<b>223531</b> S-3XL	Adult
	Adult Tall
<b>223631</b> S-L	Youth
<b>223731</b> S-2XL	Ladies
	Ladies Tall

NEW MT-2XLT

- Dry-Excel™ 100% polyester double-knit
- Dry-Excel 100% polyester mesh inserts
- Ladies' fit on style 222731
- Covered elastic waistband with inside drawcord
- Side seam pockets
- Tapered leg
- Zipper on outside lower leg

BLACK/  
BLACK  
425BLACK/  
WHITE  
420GRAPHITE/  
WHITE  
R04NAVY/  
WHITE  
301ROYAL/  
WHITE  
280SCARLET/  
WHITE  
408WHITE/  
BLACK  
226




**VENTURA  
SOFT KNIT HOODIE**
**222598**      Adult  
 S-3XL

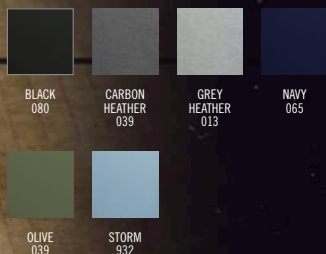
**222698**      Youth  
 S-XL

- Lightweight, soft-knit
- Solids, 89% recycled polyester/11% spandex
- Heathers, 45% recycled polyester/44% polyester/11% spandex
- Tagless label
- 3-panel hood with drawcord on Adult only
- Side seam pockets
- Set-in sleeves
- Self-fabric cuffs and bottom band


**VENTURA  
SOFT KNIT JOGGER**
**222599**      Adult  
 S-3XL

**222699**      Youth  
 S-XL

- 89% recycled polyester/11% spandex
- Lightweight, soft-knit
- Solids, 89% recycled polyester/11% spandex
- Heathers, 45% recycled polyester/44% polyester/11% spandex
- Tagless label
- Covered elastic waistband with outside drawcord
- Faux fly
- Front pockets with inner valuables pocket inside left pocket
- Back pocket with zipper
- Tapered leg







## VENTURA SOFT KNIT SHORT SLEEVE HOODIE

**222505** Adult  
S-3XL

**222605** Youth  
S-XL

- Lightweight, soft-knit
- Solids, 89% recycled polyester/11% spandex
- Heathers, 45% recycled polyester/44% polyester/11% spandex Tagless label
- 3-panel hood with drawcord on Adult only
- Side seam pockets
- Set-in sleeves



WARM-UPS



## VENTURA SOFT-KNIT SHORTS

**223504** Adult  
S-3XL

**223604** Youth  
S-XL

- Lightweight, soft-knit
- Solids, 89% recycled polyester/11% spandex
- Heathers, 45% recycled polyester/44% polyester/11% spandex Tagless label
- Covered elastic waistband with outside drawcord (inside drawcord on Youth)
- Front pockets with inner valuables pocket inside left pocket
- Back pocket with zipper
- 8-inch inseam







**LADIES VENTURA  
SOFT KNIT HOODIE**

**222798** Ladies  
XS-2XL

- Lightweight, soft-knit
- Solids, 89% recycled polyester/11% spandex
- Heathers, 45% recycled polyester/44% polyester/11% spandex
- Tagless label
- 3-panel crossover hood
- Set-in sleeves with thumbholes for warmth
- Self-fabric cuffs and bottom band
- Side vents

				
BIRCH 907	BLACK 080	CARBON HEATHER E83	DARK GREEN 035	GREY HEATHER 013
				
MAROON 745	NAVY 065	OLIVE 039	LAVENDER J63	ORCHID 47V
				
TERRACOTTA J46	ROYAL 060	SCARLET 083	STORM 932	







**LADIES VENTURA  
SOFT KNIT JOGGER**

**222799** Ladies  
XS-2XL

- Lightweight, soft-knit
- Solids, 89% recycled polyester/11% spandex
- Heathers, 45% recycled polyester/44% polyester/11% spandex
- Tagless label
- Covered elastic waistband with outside drawcord
- Faux fly on Adult and Youth
- Front pockets with inner valuables pocket inside left pocket
- Back pocket with zipper
- Tapered leg



BLACK  
080



CARBON  
HEATHER  
039



GREY  
HEATHER  
013



NAVY  
065



OLIVE  
039



STORM  
932





V-STREET





**NEW****V-STREET FULL ZIP JACKET****223547** Adult

S-3XL

**223647** Youth

S-XL

**223747** Ladies

S-2XL

- 100% polyester double-knit
- Ladies' fit on style 223747
- Set-in sleeves
- Front pockets
- Dual inside pockets
- Striped rib-knit collar, cuffs and bottom band

ATHLETIC  
HEATHER/  
WHITE  
152BLACK/  
WHITE  
420NAVY/  
WHITE  
301ROYAL/  
WHITE  
280SCARLET/  
WHITE  
408WHITE/  
ATHLETIC  
HEATHER  
510





**MAYFIELD**  
UNIVERSITY  
**PANTHERS**







### WICKING FLEECE SHORT SLEEVE HOODIE

**6871**  
S-4XL

Adult

- 5.9 ounce, 100% polyester performance wicking fleece with color secure® technology that helps prevent dye migration
- Tear away label
- Self-lined hood with drawcord
- Set-in sleeves
- Front pouch pocket
- Self-fabric bottom band
- Coordinating pants 5566/5568



ATHLETIC  
GREY  
009



BLACK  
080



GRAPHITE  
059



NAVY  
065



ROYAL  
060



SCARLET  
083



WHITE  
005





Available in Adult/Youth Only



Available in Adult/Youth Only



Available in Adult/Youth Only



REVERSIBLE







# TRICOT MESH REVERSIBLE JERSEY 2.0

**161** Adult  
S-3XL

**162** Youth  
XXS-L

- Two layers of 100% polyester sports mesh with color secure® technology that helps prevent dye migration
- Outside locker label
- V-neck collar
- Each layer hemmed separately for easy embellishment



# LADIES TRICOT MESH REVERSIBLE JERSEY 2.0

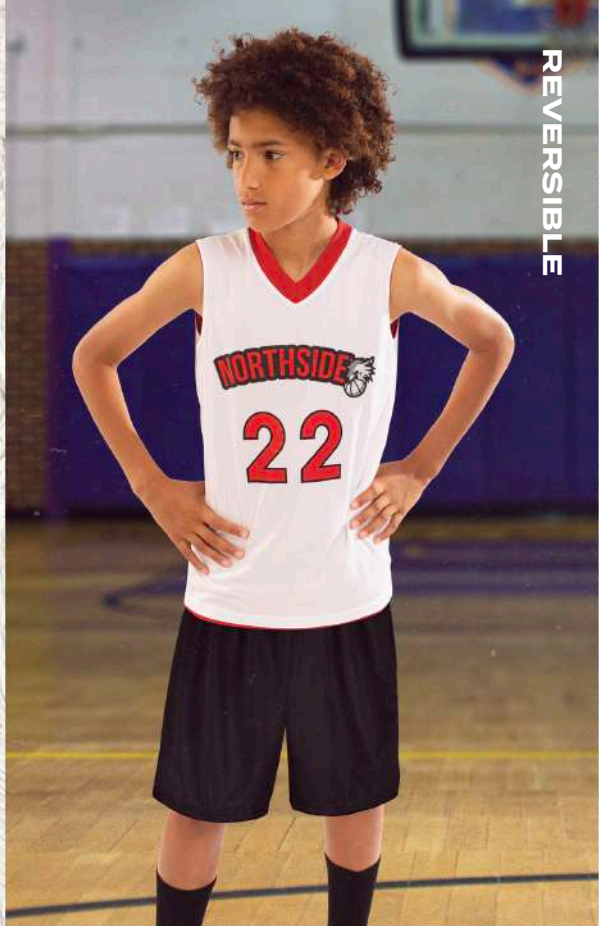
**163** Ladies  
XS-2XL

- Two layers of 100% polyester sports mesh with color secure® technology that helps prevent dye migration
- Outside locker label
- Racerback styling
- Each layer hemmed separately for easy embellishment

REVERSIBLE







REVERSIBLE



#### REVERSIBLE TWO-COLOR JERSEY

**152** Adult  
S-3XL

**153** Youth  
S-L

- 100% polyester wicking knit with color secure® technology that helps prevent dye migration
- Tear away label
- Each layer hemmed separately for easy embellishment



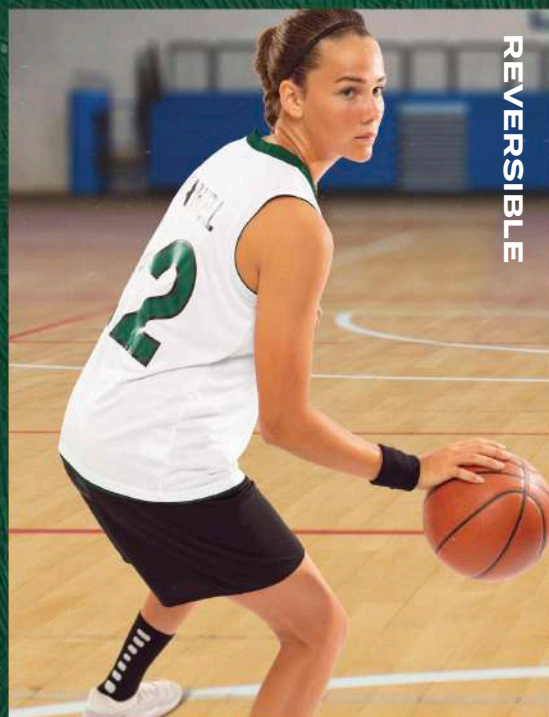
#### LADIES REVERSIBLE TWO-COLOR JERSEY

**154** Ladies  
S-2XL

- 100% polyester wicking knit with color secure® technology that helps prevent dye migration
- Tear away label
- Each layer hemmed separately for easy embellishment



Available in Adult/Youth Only



**MODIFIED MESH SHORTS**

**1850** Adult  
S-4XL

**1851** Youth  
XXS-XL

- 100% polyester sports mesh with color secure® technology that helps prevent dye migration
- 100% polyester wicking knit lining with color secure® technology
- Tagless label
- Covered elastic waistband with inside drawcord
- 7-inch inseam
- Youth inseam graded







### LONG SLEEVE COMPRESSION TEE

**R20CPM** Adult  
S-3XL

- 84% polyester/16% spandex elastane Xtreme compression cloth with Coolcore® fabric technology
- 92% polyester/8% elastane stretch mesh inserts with Coolcore® fabric technology
- Garment protects against the sun with 50+ UPF
- Tagless label
- Raglan sleeves



BLACK  
BLK

GRID IRON  
SILVER  
GSV

MAROON  
MAR

NAVY  
NAV



ROYAL  
ROY

STEALTH  
SHL

TRUE RED  
TRR

WHITE  
WHI



### HALF SLEEVE COMPRESSION TEE

**R21CPM** Adult  
S-3XL

- 84% polyester/16% spandex elastane Xtreme compression cloth with Coolcore® fabric technology
- 92% polyester/8% elastane stretch mesh insert on center back and underarm
- Garment protects against the sun with 50+ UPF
- Tagless label
- Raglan sleeves
- Dropped tail



BLACK  
BLK

GRID IRON  
SILVER  
GSV

MAROON  
MAR

NAVY  
NAV



ROYAL  
ROY

STEALTH  
SHL

TRUE RED  
TRR

WHITE  
WHI



### SLEEVELESS COMPRESSION TANK

**R22CPM** Adult  
XS-3XL

- 84% polyester/16% spandex elastane Xtreme compression cloth with Coolcore® fabric technology
- 92% polyester/8% elastane stretch mesh inserts underarm
- Garment protects against the sun with 50+ UPF
- Tagless label
- Dropped tail



BLACK  
BLK

GRID IRON  
SILVER  
GSV

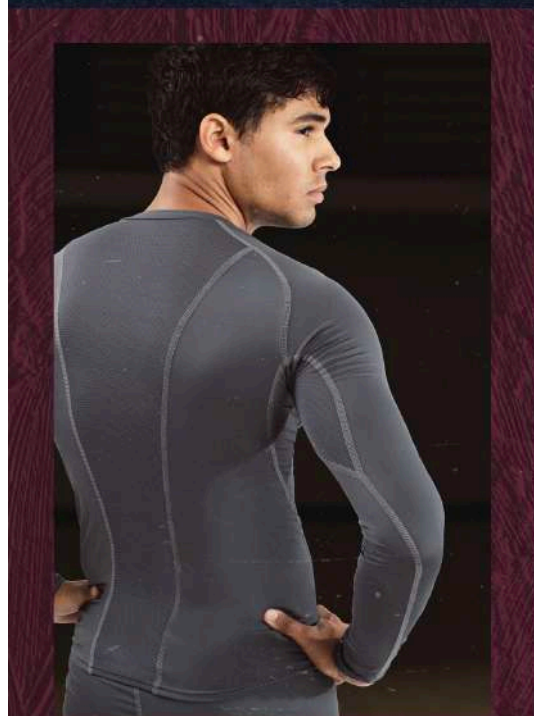
NAVY  
NAV



ROYAL  
ROY

TRUE RED  
TRR

WHITE  
WHI











### COMPRESSION SHORTS

**R24CPM** Adult  
XS-3XL

- 84% polyester/16% spandex elastane Xtreme compression cloth with Coolcore® fabric technology
- 92% polyester/8% elastane stretch mesh gusset
- Garment protects against the sun with 50+ UPF
- Ultra tight fit
- Tagless label
- Branded soft brushed back exposed elastic waistband provides comfort



BLACK BLK  
GRIDIRON SILVER GSV  
WHITE WHI



### COMPRESSION 7/8 TIGHT

**R23CPM** Adult  
XS-3XL

- 86% polyester/14% spandex elastane Xtreme compression cloth with Coolcore® fabric technology
- 92% polyester/8% elastane stretch mesh insert at back of knee and gusset
- Garment protects against the sun with 50+ UPF
- Ultra tight fit
- Tagless label
- Branded soft brushed back exposed elastic waistband provides comfort



BLACK BLK  
GRIDIRON SILVER GSV  
WHITE WHI



### COMPRESSION FULL LENGTH TIGHT

**R25CPM** Adult  
XS-3XL

- 84% polyester/16% spandex elastane Xtreme compression cloth with Coolcore® fabric technology
- 92% polyester/8% elastane stretch mesh insert at back of knee and gusset
- Garment protects against the sun with 50+ UPF
- Ultra tight fit
- Tagless label
- Branded soft brushed back exposed elastic waistband provides comfort



BLACK BLK  
GRIDIRON SILVER GSV  
WHITE WHI





**SHORT SLEEVE HOODIE  
POWERED BY COOLCORE®**

**222142** Adult  
XS-3XL

- 88% polyester/12% elastane Coolcore® fabric with color secure® technology that helps prevent dye migration
- Garment protects against the sun with 50+ UPF
- Tagless label
- 3 panel crossover hood
- Set-in sleeves with rolled forward shoulder seam



**SLEEVELESS HOODIE  
POWERED BY COOLCORE®**

**222590** Adult  
XS-3XL

- 88% polyester/12% elastane Coolcore® fabric with color secure® technology that helps prevent dye migration
- 92% polyester knitted mesh/8% elastane wicking knit inserts with Coolcore® fabric technology
- Garment protects against the sun with 50+ UPF
- Tagless label
- Overlapping hood
- Side insert pocket



**TANK POWERED  
BY COOLCORE®**

**222593** Adult  
S-3XL

- 88% polyester/12% elastane Coolcore® fabric with color secure® technology that helps prevent dye migration
- Garment protects against the sun with 50+UPF
- Tagless label
- Rolled forward shoulder and side seam



**SHORTS POWERED  
BY COOLCORE®**

**222594** Adult  
S-3XL MSRP 32.80

- 88% polyester/12% elastane Coolcore® fabric with color secure® technology that helps prevent dye migration
- 92% polyester knitted mesh/8% elastane wicking knit inserts with Coolcore® fabric technology
- Garment protects against the sun with 50+ UPF
- Tagless label
- Covered elastic waistband
- Side seam pockets
- 7-inch inseam



ATHLETIC GREY 009    BLACK 080    DARK GREEN 035    IRON 98D



MAROON 745    NAVY 065    OLIVE 039    ROYAL 060



SCARLET 083    WHITE 005



BLACK 080    IRON 98D    MAROON 745    NAVY 065



ROYAL 060    SCARLET 083    WHITE 005



BLACK 080    IRON 98D    MAROON 745    NAVY 065



ROYAL 060    SCARLET 083    WHITE 005



ATHLETIC GREY 009    BLACK 080    IRON 98D



MAROON 745    NAVY 065    ROYAL 060





Warmth **5** / 10

Weight **Light**

**LEGEND  
HOODED PULLOVER**

**R20DSM** Adult  
S-4XL

- 90% polyester/10% spandex lightweight stretch woven fabric with durable water-repellent finish to keep you dry
- High collar, half-zip pullover style zipper garage
- 3-piece hood with drawcord
- Set-in sleeves
- Side zippered pockets
- Inside mesh valuables pocket
- Spandex bound cuffs
- Open bottom



BLACK  
BLK



DK GREEN/  
BLACK  
ADJ



NAVY  
NAV



ROYAL/  
BLACK  
72T



STEALTH  
SHL



STEALTH/  
BLACK  
ANN



TRUE RED/  
BLACK  
A7B



WHITE/  
NAVY  
WNA



WHITE/  
STEALTH  
XDE



**LEGEND  
STRETCH WOVEN SHORTS**

**R20SWM** Adult  
S-4XL  
5XL-6XL in select colors

- 90% polyester/10% spandex lightweight stretch woven fabric with durable water-repellent finish to keep you dry
- Micromesh inseam gusset
- Heat sealed label
- Covered elastic waistband with inside drawcord

Available in 5XL-6XL



BLACK  
BLK



KHAKI  
010



GRID IRON  
SILVER  
GSV



NAVY  
NAV



STEALTH  
SHL





### LEGEND POLO

**R20DKM** Adult  
S-4XL

**R20DKX** Ladies  
S-3XL

- 4.4 ounce, 100% polyester 2-ply fabric with high mechanical stretch
- Micromesh interior collar stand for breathability around neck
- Dri-Power® Moisture Wicking Technology
- Ladies' fit on style R20DKX
- Heat sealed label
- Three-button placket with collar stay that helps maintain collar shape wash after wash
- Set-in sleeves
- Side vents







Warmth **2** / 10 Weight **Light**

### MOMENTUM TEAM 1/4 ZIP PULLOVER

<b>223500</b>	Adult	S-4XL
<b>223600</b>	Youth	S-XL
<b>223700</b>	Ladies	S-3XL

- Dry-Excel™ 100% polyester interlock smooth knit with color secure® technology that helps prevent dye migration
- Garment protects against the sun with 45+ UPF
- Ladies' fit on style 223700
- Tagless label
- Set-in sleeves with angled shoulder seam for mobility and comfort

Available in Adult & Ladies only



Available in Adult & Ladies only



POWERED BY  
**COOLCORE®**



**NEW**

### PERFORMANCE POLO POWERED BY COOLCORE®

<b>222518</b>	Adult	S-4XL
<b>222701</b>	Ladies	XS-3XL

- 88% polyester/12% elastane Coolcore® fabric with color secure® technology that helps prevent dye migration
- Garment protects against the sun with 50+ UPF
- Ladies' fit on style 222701
- Tagless label
- Three-button placket on Adult
- Self-fabric Johnny collar on Ladies'
- Set-in sleeves
- Side vents
- Contoured bottom on Ladies'







NEW

**UNITED BACKPACK****327930**

11.5"W x 19"H x 9.5"D

- 600-denier polyester with PVC coating
- 210-denier nylon with PVC coating
- Large main interior compartment with two corded zipper pulls
- Large front ventilated compartment with two corded zipper pulls
- Zippered pocket with brushed interior for valuables
- Front pocket with corded zipper pull with hidden inside mesh ball holder that fits Volleyball, Soccer or Basketballs
- Two mesh side pockets
- Adjustable buckles on sides to secure baseball bat
- Internal zippered mesh valuables pocket
- Key clip inside main compartment
- Padded back for support and comfort
- Web handle at top of backpack
- Adjustable padded shoulder straps

BLACK  
080GRAPHITE/  
BLACK  
172NAVY/  
BLACK  
308



