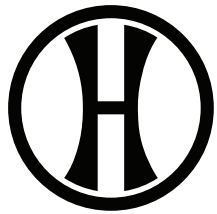




**AT** ALL TEAM  
SPORTS

OUTERWEAR

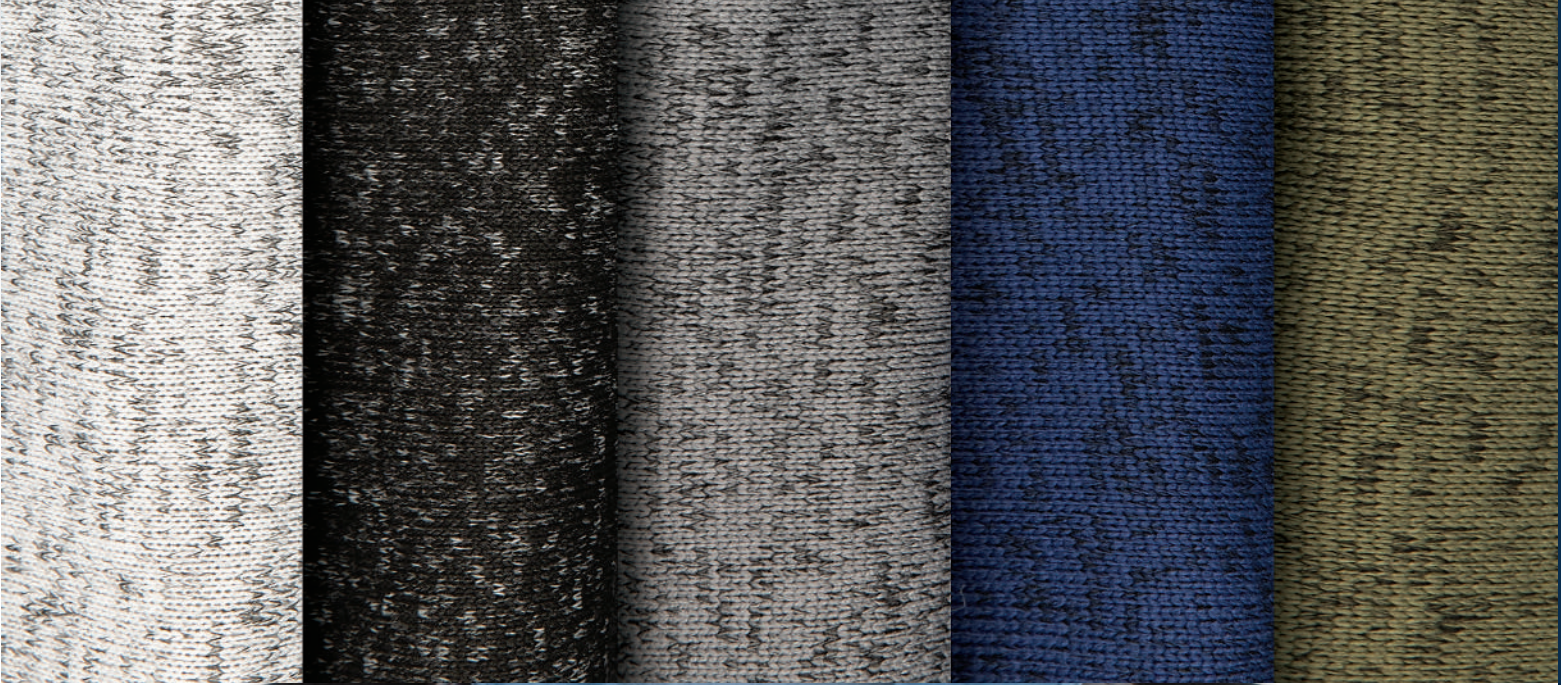




**HOLLOWAY**

EST. 1946







228156

228356

Varsity



Quad

Ladies' Fit

**NEW**

**FREESTYLE SUBLIMATED FULL-ZIP JACKET**

Dry-Excel™

- 228156** Adult S-3XL
- 228256** Youth S-XL
- 228356** Ladies S-2XL

- Dry-Excel™ 5.9 ounce 100% polyester performance wicking fleece and brushed back for added warmth
- Tear away label
- Ladies' fit on style 228356
- Set-in sleeves
- Side seam pockets
- Self-fabric cuffs
- Open bottom

**NEW**

**FREESTYLE SUBLIMATED PANT**

Dry-Excel™

- 228157** Adult S-3XL
- 228257** Youth S-XL
- 228357** Ladies S-2XL

- Dry-Excel™ 5.9 ounce, 100% polyester performance wicking fleece with brushed back for added warmth
- Ladies' fit on style 228357
- Tear away label
- Covered elastic waistband with inside drawcord
- Side seam pockets
- Tapered leg
- Zipper on outside lower leg



**NEW**

**FREESTYLE SUBLIMATED WOVEN SHORT SLEEVE 1/4 ZIP PULLOVER**

**228160** Adult S-5XL  
**228260** Youth XS-XL

- 92% polyester/8% spandex
- Garment protects against the sun with 50+ UPF
- Tag-free label
- Low profile collar
- Set-in sleeves
- Open bottom



Pinstripe



**NEW**

**FREESTYLE SUBLIMATED WOVEN 1/4 ZIP PULLOVER**

**228161** Adult S-5XL  
**228261** Youth XS-XL

- 92% polyester/8% spandex
- Garment protects against the sun with 50+ UPF
- Tag-free label
- Low profile collar
- Set-in sleeves
- Open bottom



Classic Double



228160  
Clubhouse



228161  
Legend

**ULTRA SOFT  
COTTONY FEEL!**



**FREESTYLE SUBLIMATED  
1/4 ZIP PULLOVER**

|               |        |       |
|---------------|--------|-------|
| <b>228107</b> | Adult  | S-3XL |
| <b>228207</b> | Youth  | S-XL  |
| <b>228307</b> | Ladies | S-3XL |

- Dry-Excel™ 100% polyester wicking smooth knit
- Garment protects against the sun with 50+ UPF
- Ladies' fit on style 228307
- Tag-free label
- Set-in sleeves
- Dropped tail on Ladies'

Speckled  
Gradient



Rectangular  
Prism



Watercolor Camo II



Spectator



# ULTRA SOFT COTTONY FEEL!



FREESTYLE SUBLIMATED  
COTTON-TOUCH  
POLY 1/4 ZIP PULLOVER

|               |        |       |
|---------------|--------|-------|
| <b>228145</b> | Adult  | S-3XL |
| <b>228245</b> | Youth  | S-XL  |
| <b>228345</b> | Ladies | S-3XL |

- 5.6 ounce, 95% polyester/5% cotton
- Ladies' fit on style 228345
- Tag-free label
- Set-in sleeves
- Dropped tail on Ladies'



Tie Dye



Gradient

**FREESTYLE SUBLIMATED  
FLEECE HOODIE**



|               |        |        |
|---------------|--------|--------|
| <b>228141</b> | Adult  | S-5XL  |
| <b>228241</b> | Youth  | S-XL   |
| <b>228341</b> | Ladies | XS-3XL |

- Dry-Excel™ 5.9 ounce 100% polyester performance wicking fleece and brushed back for added warmth
- Ladies' fit on style 228341
- Tag-free label
- Hood with pinhole mesh lining
- Set-in sleeves
- Front pouch pocket
- Self-fabric cuffs and bottom band

228141

Digit



228341

Watercolor Camo II







FREESTYLE  
SUBLIMATED  
FLEECE ¼ ZIP



|               |       |       |
|---------------|-------|-------|
| <b>228142</b> | Adult | S-3XL |
| <b>228242</b> | Youth | S-XL  |

- Dry-Excel™ 5.9 ounce 100% polyester performance wicking fleece and brushed back for added warmth
- Tag-free label
- Set-in sleeves
- Open bottom

Merge



All Over



Digit



R23SWM



Back



Zippered leg pocket



Zippered back pocket



**NEW**

**LEGEND TECH FLEECE HOODIE**

**R23TFM** Adult S-4XL

- 66% cotton/34% polyester tech fleece
- 100% polyester, water-resistant shoulders, hood and back yoke
- 3-piece jersey lined hood with drawcord
- Weld tape accent at shoulders and back yoke
- Set-in sleeves
- Front zippered valuables pocket with weld tape accent
- Front pouch pocket
- Spandex bound cuffs and bottom



BLACK  
BLK

NAVY  
NAV

STEALTH  
SHL

WHITE/  
GRIDIRON SILVER  
A9B



**NEW**

**LEGEND PANT**

**R23SWM** Adult XS-4XL  
\*4XL in Black only

- 90% polyester/10% spandex lightweight stretch woven fabric with durable water-resistant finish to keep you dry
- Heat sealed label
- Elastic waistband with inside drawcord
- Side seam pockets
- Welt zippered pocket on wearer's left leg
- Back zippered pocket



BLACK  
BLK

KHAKI  
O10

NAVY  
NAV

STEALTH  
SHL



R20SWM



Back



**NEW**

**LEGEND SHORT SLEEVE  
TECH FLEECE HOODIE**

**R24TFM** Adult S-4XL

- 66% cotton/34% polyester tech fleece
- 3-piece jersey lined hood with drawcord
- Raglan sleeves
- Front zippered valuables pocket with weld tape accent
- Front pouch pocket
- Dropped tail with side vents



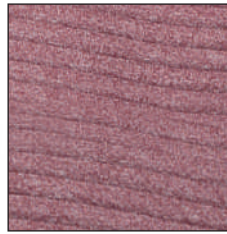
BLACK  
BLK

NAVY  
NAV

STEALTH  
SHL

WHITE/  
GRIDIRON SILVER  
AGB

COORDINATING FULL-ZIP  
229588



3D Seamless insulated knit traps heat to keep you warm while 3D channels release excess heat to keep you comfortable.



Pleated Back Detail on Ladies



229794



229594



**3D REGULATE PULLOVER**

**229594** Adult XS-3XL  
**229794** Ladies XS-2XL

- 100% polyester heathered knit with seamless quilted insulation for added warmth
- Wik-Sof™ performance fleece lower body
- Ladies' fit on style 229794
- Half-zip pullover style with storm flap and zipper garage
- Set-in sleeves
- Front zippered pockets



BLACK HEATHER/  
BLACK  
K54

FOREST HEATHER/  
FOREST  
K55

MAROON HEATHER/  
MAROON  
K59



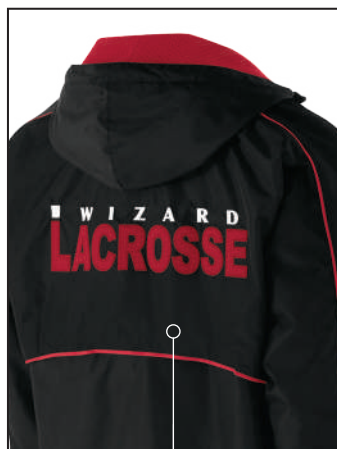
NAVY HEATHER/  
NAVY  
K64

ROYAL HEATHER/  
ROYAL  
K66



SILVER HEATHER/  
SILVER  
K6E

SCARLET HEATHER/  
SCARLET  
K67



Adjustable Vent For Decoration Access



### WIZARD PULLOVER

229016 Adult S-3XL

- Micron™ polyester is a lightweight, wind/water resistant fabric
- Micromesh lined nylon body & hood
- Adjustable mesh lined hood with eyelets and concealed cord locks
- Front zippered pockets
- Half-elastic cuffs
- Open bottom with adjustable elastic hidden drawcord



Dropped Tail



BLACK/  
LIGHT GOLD  
R16

BLACK/  
ORANGE  
423

BLACK/  
SCARLET  
500

BLACK/  
WHITE  
420

MAROON/  
WHITE  
380

NAVY/  
LIGHT GOLD  
528



NAVY/  
WHITE  
301

ROYAL/  
WHITE  
280

SCARLET/  
WHITE  
408

CARBON/  
WHITE  
F52

DARK GREEN/  
WHITE  
438



Front zippered pockets

223740

223540



**NEW**

ALPINE SWEATER FLEECE  
1/4 ZIP PULLOVER

**223540** Adult S-3XL  
**223740** Ladies XS-2XL

- Eco-Revive® product featuring 80% recycled polyester/20% polyester
- Ladies' fit on style 223740
- Hanger loop label
- Set-in sleeves
- Front zippered pockets
- Open bottom



BLACK HEATHER  
K94

GRAPHITE HEATHER  
R13

NAVY HEATHER  
U22

OLIVE HEATHER  
49N

SILVER HEATHER  
R12



**NEW**

**ALPINE SWEATER FLEECE VEST**

**223542** Adult S-3XL  
**223742** Ladies XS-2XL

- Eco-Revive® product featuring 80% recycled polyester/20% polyester
- Ladies' fit on style 223742
- Hanger loop label
- Exterior faux leather logo loop label
- Front chest zippered pocket on Adult
- Front zippered pockets
- Spandex bound open bottom



BLACK HEATHER  
K94

GRAPHITE HEATHER  
R13

NAVY HEATHER  
U22

OLIVE HEATHER  
49N

SILVER HEATHER  
R12



P303



Back

R20SWM

LEGEND COLLECTION



Side zippered pockets



### LEGEND HOODED PULLOVER

**R20DSM** Adult S-4XL

- 90% polyester/10% spandex lightweight stretch woven fabric with durable water-repellent finish to keep you dry
- High collar, half-zip pullover style zipper garage
- 3-piece hood with drawcord
- Set-in sleeves
- Side zippered pockets
- Inside mesh valuables pocket
- Spandex bound cuffs
- Open bottom



BLACK  
BLK

DK GREEN/  
BLACK  
A0J

NAVY  
NAV



ROYAL/  
BLACK  
72T

STEALTH  
SHL

STEALTH/  
BLACK  
ANN



TRUE RED/  
BLACK  
A7B

WHITE/  
NAVY  
WNA

WHITE/  
STEALTH  
XDE

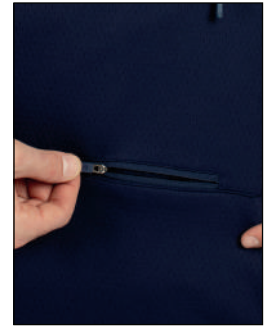




LIMITLESS  
COLLECTION



Drawstring Hood



Front Zippered Valuables Pocket



### LIMITLESS 1/4 ZIP HOODIE

**222584** Adult XS-3XL

- Dry-Excel™ 100% polyester wicking double knit mesh texture
- High collar, half-zip pullover style zipper garage
- Pinhole mesh lined hood with drawcord
- Raglan sleeves
- Front pouch pocket
- Half-elastic cuffs
- Dropped tail



BLACK/  
BLACK  
425

BLACK/  
WHITE  
420

CARBON/  
CARBON  
D87A

CARBON/  
WHITE  
F52

DARK GREEN/  
WHITE  
438



MAROON/  
WHITE  
380

NAVY/  
NAVY  
S14

NAVY/  
WHITE  
301

ROYAL/  
WHITE  
280

SCARLET/  
WHITE  
408

### MORE FROM THE LIMITLESS COLLECTION

229580



**229579 | 229679 | 229779**  
Limitless Jacket



**229580 | 229680 | 229780**  
Limitless Pant



Jacket folds up into zippered front pocket



### RANGE PACKABLE PULLOVER

**229554** Adult S-3XL  
4XL in select colors

**229654** Youth S-XL  
Select Colors

- Tech weave printed Micron™ lightweight polyester, wind/water resistant fabric
- Adjustable 3 piece hood with eyelets and concealed cord locks on Adult only (elastic on youth)
- Raglan sleeves
- Half-elastic cuffs
- Adjustable bottom hem with hidden shockcord closure on right side of pocket (on Adult only)



Jacket folds up into zippered front pocket concealed under flap.



### PULLOVER JACKET IN A POCKET

**3130** Adult S-3XL

- Outer shell of 100% nylon taffeta
- Hood with drawcord
- Set-in sleeves
- Elastic cuffs





Adjustable Hood



PACK PULLOVER

**229534** Adult S-3XL  
4XL in select colors

**229634** Youth S-XL

- 100% polyester MicroTec soft micro denier fabric with PU coating for water-resistance
- Adjustable 3-piece hood on Adult only (elastic on youth)
- Set-in sleeves
- Spandex bound cuff
- Adjustable bottom hem with hidden shockcord closure in right pocket (on Adult)



Jacket folds up into zippered front pocket

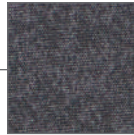


Back



121C





Tech Print Pattern

Sleeve pocket with silver media port & silicone welded zipper

Divided Front Pouch Pocket

Spandex-Bound Cuffs

### COORDINATING JACKET

229157 | 229357



### RAIDER PULLOVER

229155 Adult XS-3XL  
4XL in select colors

- Ultra-lightweight Aero-Tec™ fabric provides both weather protection and zero noise, without the bulk
- Set-in sleeves

Available in Adult 4XL



CARBON PRINT/BLACK H05

CARBON PRINT/GRAPHITE H60

CARBON PRINT/NAVY H03

CARBON PRINT/ROYAL H02

CARBON PRINT/SCARLET H01



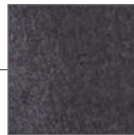
CARBON PRINT/FOREST H69

CARBON PRINT/MAROON H06

CARBON PRINT/ORANGE H07

CARBON PRINT/PURPLE H68

CARBON PRINT/WHITE H04



Tech Print Pattern

Sleeve pocket with silver media port & silicone welded zipper

Divided Front Pouch Pocket



### RAIDER PULLOVER SHORT SLEEVE

229545 Adult S-3XL  
4XL in select colors

- Ultra-lightweight Aero-Tec™ fabric provides both weather protection and zero noise, without the bulk
- Set-in sleeves

Available in Adult 4XL



CARBON PRINT/BLACK H05

CARBON PRINT/NAVY H03

CARBON PRINT/ROYAL H02

CARBON PRINT/SCARLET H01

CARBON PRINT/WHITE H04



CARBON PRINT/FOREST H69

CARBON PRINT/GRAPHITE H60

CARBON PRINT/MAROON H06

CARBON PRINT/ORANGE H07

CARBON PRINT/PURPLE H68



Embossed Pattern



BIONIC WINDSHIRT



229019 Adult S-3XL

- Micron™ polyester is a lightweight, wind/water resistant fabric
- Sleeves and arms are embossed with the Screenmesh print
- Jersey and taffeta lining for added warmth
- Raglan sleeves
- Front pockets
- Elastic cuffs
- Open bottom with adjustable elastic hidden drawcord
- Coordinating pants: 229531 | 229631 | 229731



BLACK/LT GOLD R16  
 BLACK/ORANGE 423  
 BLACK/SCARLET 500  
 BLACK/VEGAS GOLD 255  
 BLACK/WHITE 420  
 CARBON/BLACK E84  
 CARDINAL/WHITE 409  
 DK GREEN/WHITE 438  
 KELLY/WHITE 340



MAROON/WHITE 380  
 NAVY/LT GOLD S28  
 NAVY/SCARLET S20  
 NAVY/VEGAS GOLD 256  
 NAVY/WHITE 301  
 PURPLE/WHITE 450  
 ROYAL/LT GOLD S67  
 ROYAL/WHITE 280  
 SCARLET/WHITE 408



SHORT SLEEVE PULLOVER



872RVM Adult S-3XL

872RVB Youth S-XL

- 100% polyester lightweight breathability fabric
- Dri-Power® Moisture Wicking Technology
- Raglan sleeves
- Adjustable bottom hem with hidden shockcord closure (on Adult only)

Colors Available in Youth



BLACK/WHITE BWH  
 NAVY/WHITE NNH  
 ROYAL/WHITE ROW  
 TRUE RED/WHITE TRW  
 WHITE/STEALTH XDE



MICRO POLY WINDSHIRT/LINED



3415 Adult S-4XL

- Outer shell of 100% micro polyester
- Lined with 100% polyester taffeta
- Rib-knit V-neck collar, cuffs and bottom band
- Set-in sleeves
- Side seam pockets



BLACK 080  
 RED 040  
 ROYAL 060  
 NAVY 065



Stretch mesh at center back for maximum mobility



Side seam zipper for easy on/off



### CLUBHOUSE SHORT SLEEVE PULLOVER

**229581** Adult S-4XL

5XL in select colors

**229681** Youth S-XL

- Areo-Tec 100% polyester
- Low profile collar
- Set-in sleeves
- Side seam pockets



ES474



229556

Available in 5XL



BLACK/  
WHITE  
420

GRAPHITE/  
WHITE  
R04

NAVY/  
WHITE  
301

WHITE/  
GRAPHITE  
751

ROYAL/  
WHITE  
280

SCARLET/  
WHITE  
408

DARK  
GREEN/  
WHITE  
438

MAROON/  
WHITE  
380

BLACK/  
ORANGE  
423

NAVY/  
SCARLET  
S20



Side zipper for easy on/off



Back



ES471



CLUBHOUSE PULLOVER

**229595** Adult S-3XL  
**229695** Youth S-XL

- Areo-Tec 100% polyester
- Low profile collar
- Set-in sleeves
- Side seam pockets
- Spandex bound cuffs



BLACK/  
BLACK  
425

BLACK/  
ORANGE  
423

BLACK/  
WHITE  
420

DARK GREEN/  
WHITE  
438



GRAPHITE/  
WHITE  
R04

NAVY/  
NAVY  
S14

NAVY/  
SCARLET  
S20

NAVY/  
WHITE  
301



ROYAL/  
WHITE  
280

SCARLET/  
WHITE  
408

WHITE/  
GRAPHITE  
751





6855

229559



6893

6857

221398

CHILL FLEECE 2.0 1/2 ZIP PULLOVER

|             |        |        |
|-------------|--------|--------|
| <b>6855</b> | Adult  | S-3XL  |
| <b>6856</b> | Youth  | XS-L   |
| <b>6857</b> | Ladies | XS-2XL |

- Eco-Revive® product featuring 8 ounce, 70% recycled polyester/30% polyester
- Ladies' fit on style 6857
- Hanger loop label
- Set-in sleeves
- Front zippered pockets with spandex binding detail
- Spandex bound cuffs
- Open bottom



BLACK 080    GRAPHITE 059    NAVY 065    ROYAL 060

Available in Adult & Ladies Only



SCARLET 083    DK GREEN 035    MAROON 745

Available in Adult & Ladies Only



OLIVE 039    OYSTER 53T    STORM 932

MORE FROM THE CHILL FLEECE 2.0 COLLECTION



**6852**  
**6854**  
Chill Fleece  
2.0 Vest



**6858**  
**6859**  
**6860**  
Chill Fleece 2.0  
Full Zip Hoodie



**6893**  
Chill Fleece  
2.0 Headband





223553



223753



Modest cropped length with drop tail on Ladies'

**NEW**

VENTURA 1/4 ZIP PULLOVER

Dry-Excel

**223553** Adult S-3XL  
**223753** Ladies XS-2XL

- Ventura Suede Knit 6.34-ounce
- Solids, 89% recycled polyester/11% spandex
- Heathers, 45% recycled polyester/44% polyester/11% spandex
- Ladies fit on style 223753
- Tag-free label
- Quarter zip pullover with covered placket zipper
- Set-in sleeves with rolled forward shoulder seam
- Dropped shoulder sleeves on Ladies'
- Modest cropped length with drop tail on Ladies'
- Side vents



BIRCH 907

BLACK 080

CHARCOAL HEATHER 083

GREY HEATHER 013

NAVY 065



Ladies Fit

QZ7EAM

QZ7EAX



**DRI-POWER® LIGHTWEIGHT  
1/4 ZIP PULLOVER**

**QZ7EAM** Adult XS-3XL  
**QZ7EAX** Ladies S-2XL

- 100% polyester 2-tone interlock
- Lightweight stretch fabric
- Dri-Power® Moisture Wicking Technology
- Odor protection
- Ladies' fit on style QZ7EAX
- Tag-free label
- Set-in sleeves

Available in  
Adult only



BLACK  
BLK

CARDINAL  
CRD

DARK GREEN  
DGR

NAVY  
NAV

MAROON  
MAR

PURPLE  
PUR

ROYAL  
ROY

STEALTH  
SHL

TRUE RED  
TRR





**PRISM  
COLLECTION**

**COORDINATING POLOS**

**222568 | 222768  
222576 | 222776**



Ladies Fit



**PRISM BOLD 1/4 ZIP PULLOVER**

**222591** Adult S-3XL  
**222791** Ladies XS-2XL

- Dry-Excel™ 4.8 ounce 100% polyester wicking honeycomb knit
- Garment protects against the sun with 50+ UPF
- Tag-free label
- Weld tape accent at chest
- Set-in sleeves



Back



BLACK/CARBON D86    BLACK/GOLD 421    BLACK/ORANGE 423    BLACK/SCARLET 500    MAROON/WHITE 380    NAVY/GOLD 302



BLACK/WHITE 420    CARBON/WHITE F52    NAVY/WHITE 301    ROYAL/WHITE 280    SCARLET/WHITE 408



**MEDALIST 2.0 COLLECTION**

**COORDINATING JACKET**

**4395 | 4396 | 4397**



Ladies Fit

**MEDALIST 2.0 PULLOVER**

**4386** Adult S-3XL  
**4388** Ladies XS-2XL

- Heavyweight 100% polyester matte brushed tricot
- Tag-free label
- Set-in sleeves
- Front pouch pocket
- Coordinating pants: 7731 | 7732 | 7733, 7760 | 7761 | 7762



BLACK/GOLD 421    BLACK/RED 424    BLACK/VEGAS GOLD 255    BLACK/WHITE 420    DARK GREEN/WHITE 438    GRAPHITE/WHITE R04    KELLY/WHITE 340

Available in Adult only



NAVY/WHITE 301    PURPLE/WHITE 450    RED/WHITE 400    ROYAL/WHITE 280    BLACK/ORANGE 423    MAROON/WHITE 380    NAVY/VEGAS GOLD 296



SERIESX COLLECTION



398F



229733



229533

229556



Embossed Pattern

### COORDINATING WARM-UP

223558 | 223658 | 223758  
229528 | 229628 | 229728  
229531 | 229631 | 229731



### SERIESX PULLOVER

**229533** Adult XS-3XL  
4XL in select colors  
**229633** Youth S-XL  
**229733** Ladies XS-2XL

- Micron™ polyester is a lightweight, wind/water-resistant fabric
- Embossed inserts for subtle textured pattern
- Micromesh lined nylon body
- Taffeta lined sleeves
- Ladies' fit on 229733
- Set-in sleeves
- Front pockets
- Spandex bound cuffs
- Dropped tail with side vents
- Alternate pant: 229531 | 229631 | 229731



Side seam zipper for easy on/off

Available in 4XL, Ladies & Youth

Available in Adult & Ladies



BLACK  
080

CARBON  
J96

WHITE  
005



NAVY  
065

ROYAL  
060

SCARLET  
083



BLACK/  
ORANGE  
423

BLACK/  
SCARLET  
500



CARDINAL  
J36

CARBON/  
GOLD  
43M

COLUMBIA  
BLUE  
089

DARK  
GREEN  
035

KELLY  
030

MAROON  
045

NAVY/  
GOLD  
302

NAVY/  
SCARLET  
S20

PURPLE  
050



**ELECTRIFY COOLCORE®  
COLLECTION**



**ELECTRIFY COOLCORE®  
1/2 ZIP PULLOVER**

- 222574** Adult S-3XL
- 222674** Youth S-XL
- 222774** Ladies XS-3XL

- 87% polyester/13% elastane heathered wicking knit with Coolcore® technology
- 92% polyester knitted mesh/8% elastane wicking knit inserts with Coolcore® technology
- Garment protects against the sun with 50+ UPF on body, (25+ on mesh inserts)
- Ladies' fit on style 222774
- Tag-free label
- Raglan sleeves with thumbholes for warmth on Ladies'



Back



222574

Half-zip pullover style and reflective tape



222774



Thumbholes on Ladies

**MORE FROM THE ELECTRIFY COOLCORE® COLLECTION**



- 222571**
- 222671**
- 222771**
- Electrify Coolcore® Tee



- 222570**
- 222670**
- 222770**
- Electrify Coolcore® Long Sleeve Tee



- 222589**
- 222689**
- Electrify Coolcore® Hoodie



- 222572**
- 222772**
- Electrify Coolcore® Polo

Available in Adult only

Available in Adult & Ladies only



ATHLETIC GREY HEATHER 55M

BLACK HEATHER K94

NAVY HEATHER U22

ROYAL HEATHER U55

\*WHITE 005

OLIVE HEATHER 49N

DARK GREEN HEATHER V97

GOLD HEATHER E70

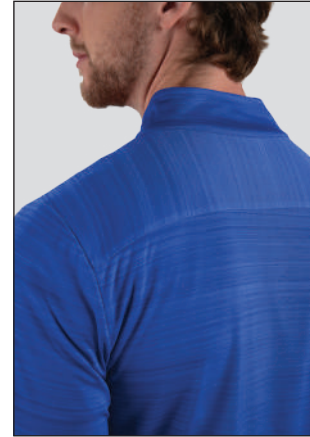
KELLY HEATHER U10

MAROON HEATHER T09

ORANGE HEATHER V98

PURPLE HEATHER U86

SCARLET HEATHER T20



Back



**PURSUIT 1/4 ZIP PULLOVER**

**NEW**

|             |        |       |
|-------------|--------|-------|
| <b>7011</b> | Adult  | S-4XL |
| <b>7012</b> | Ladies | S-3XL |

- 100% polyester interlock textured knit with tonal stripe design
- Ladies' fit on style 7012
- Tag-free label
- Cross grain back yoke
- Set-in sleeves with rolled forward shoulder seam
- Side vents
- Contoured bottom on Ladies'



ATHLETIC GREY  
009

BLACK  
080

NAVY  
065



ROYAL  
060

SCARLET  
083



## SHADOW TONAL HEATHER COLLECTION



Ladies Fit



## SHADOW TONAL HEATHER 1/4 ZIP PULLOVER

**2908** Adult S-3XL  
**2909** Ladies XS-2XL

- 100% polyester heathered wicking knit top body, collar and sleeves
- 100% polyester wicking knit solid bottom body
- Tag-free label
- Set-in sleeves
- Dropped tail bottom on Ladies'



## ATTAIN COLLECTION



Ladies Fit



## ATTAIN 1/4 ZIP PULLOVER

**2785** Adult S-3XL  
 4XL-5XL in select colors  
**2786** Youth S-XL  
**2787** Ladies XS-2XL  
 3XL in select colors

- 100% polyester wicking knit with color secure® technology that helps prevent dye migration
- Tear away label
- Set-in sleeves
- Dropped tail bottom on Ladies'







222340



222140

R20SWM



COOLCORE® 1/4 ZIP PULLOVER

|               |        |        |
|---------------|--------|--------|
| <b>222140</b> | Adult  | S-3XL  |
| <b>222240</b> | Youth  | S-XL   |
| <b>222340</b> | Ladies | XS-2XL |

- 88% polyester/12% elastane Coolcore® with color secure® technology that helps prevent dye migration
- Ladies' fit on style 222340
- Garment protects against the sun with 50+ UPF
- Tag-free label
- Set-in sleeves with rolled forward shoulder seam

Available in Adult & Ladies only



ATHLETIC GREY 009    COLUMBIA BLUE 089    DARK GREEN 035    IRON 980

Available in Adult & Ladies only



MAROON 745    PURPLE 747    WHITE 005    OLIVE 039



BLACK 080    NAVY 065    ROYAL 060    SCARLET 083

222702



MOMENTUM TEAM 1/4 ZIP PULLOVER

- 223500** Adult S-4XL
- 223600** Youth S-XL
- 223700** Ladies S-3XL

223500



223700



- Dry-Excel™ 100% polyester interlock smooth knit with color secure® technology that helps prevent dye migration
- Garment protects against the sun with 45+ UPF
- Ladies' fit on style 223700
- Tag-free label
- Set-in sleeves with angled shoulder seam for mobility and comfort



BLACK/IRON 62U    BLACK/ROYAL 426    BLACK/SCARLET 500    BLACK/WHITE 420



NAVY/WHITE 301    ROYAL/WHITE 280    SCARLET/WHITE 408

Available in Adult & Ladies only



BLACK/DARK GREEN 429    BLACK/MAROON 486    BLACK/ORANGE 423    BLACK/PURPLE 487    BLACK/KELLY 90M



GOLD/ROYAL 240    ORANGE/NAVY 771    SCARLET/NAVY W86    IRON/WHITE 99D

MORE FROM THE MOMENTUM TEAM COLLECTION





Two-Way Front Zipper

Elasticized Hook & Loop Fastener Cuffs



### CONQUEST JACKET

229162 Adult S-3XL

- Duraweav™ fabric has a smooth nylon surface
- Anti-pill microfleece and quilted nylon lining
- Adjustable 3-piece hood with eyelets and concealed cord locks
- Knee length
- Set-in sleeves
- Front right chest media pocket with inside hidden cord port
- Front pockets with microfleece lining



BLACK 080

NAVY 065

ROYAL 060

SCARLET 083



### CHARGER JACKET

229059 Adult S-4XL

229259 Youth S-XL

- Micro-Cord™ is a woven polyester fabric with a raised, ribbed texture
- Omni-Sof™ microfleece lining
- Nylon sleeve lining
- Adjustable hood with eyelets and concealed cord locks on Adult sizes only (Youth has elastic)
- Raglan sleeves
- Front zippered pockets
- Open bottom with adjustable elastic hidden drawcord (on Adult only)



Dropped Tail



Available in Adult Only



BLACK/WHITE 420

DK GREEN/WHITE 438

NAVY/WHITE 301

SCARLET/WHITE 408

KELLY/WHITE 340

ROYAL/WHITE 280

Available in Adult Only



BLACK/LT GOLD R16

BLACK/SCARLET 500

BLACK/ORANGE 423

CARBON/WHITE F52

MAROON/WHITE 380

NAVY/LT GOLD S28



## RAIDER COLLECTION

Raider Tech Print



Dual Zippered Pockets

Dual Front Chest Zippered Pocket

Ladies Fit

## COORDINATING PULLOVERS

229545

229155

## RAIDER SOFT SHELL JACKET



229157 Adult S-3XL  
4XL in select colors

229357 Ladies XS-2XL  
3XL in select colors

- Lightweight, softshell outer fabric in 96% polyester, 4% spandex bonded to brushed back polyester
- Adjustable hood with drawcord (not available on Ladies' XS)
- Internal storm cuffs for weather protection
- Open bottom with adjustable elastic hidden drawcord

Available in Adult 4XL  
& Ladies 3XL



CARBON PRINT/  
BLACK  
H05

CARBON PRINT/  
NAVY  
H03



CARBON PRINT/  
ROYAL  
H02

CARBON PRINT/  
SCARLET  
H01

Available in Adult Only



CARBON PRINT/  
FOREST  
H69

CARBON PRINT/  
PURPLE  
H68

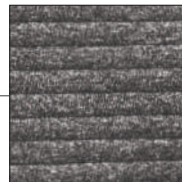
CARBON PRINT/  
MAROON  
H06

CARBON PRINT/  
ORANGE  
H07

CARBON PRINT/  
WHITE  
H04



REGULATE  
COLLECTION  
CONTROL YOUR COMFORT



3D seamless insulated knit traps heat to keep you warm while 3D channels release excess heat to keep you comfortable.

## COORDINATING PULLOVER

229594 | 229794

## 3D REGULATE JACKET



229588 Adult XS-3XL

- 100% polyester heathered knit with seamless quilted insulation for added warmth
- Wik-Sof™ performance fleece lower body & hood
- 3-piece adjustable mesh lined hood
- Set-in sleeves
- Front zippered pockets
- Spandex bound cuff
- Dropped tail



BLACK HEATHER/  
BLACK  
K54

FOREST HEATHER/  
FOREST  
K95

NAVY HEATHER/  
NAVY  
K64

MAROON HEATHER/  
MAROON  
K69

ROYAL HEATHER  
ROYAL  
K66

SILVER HEATHER/  
SILVER  
60E



P500



Back



P303



Fully Reversible



Detachable hood



Interior all-access decoration zipper



229787



229587



### TURNABOUT REVERSIBLE JACKET

**229587** Adult XS-3XL

**229687** Youth S-XL

**229787** Ladies XS-2XL

- Micron™ polyester is a lightweight, wind/water-resistant fabric

- Lightweight fleece inner layer
- Ladies' fit on style 229787
- Set-in sleeves
- Front zippered pockets on both sides
- Elastic cuffs
- Open bottom



ATHLETIC GREY/CARBON 48E

BLACK/CARBON D86

DARK GREEN/CARBON C84

MAROON/CARBON E92

NAVY/CARBON E81

ORANGE/BLACK 321

ROYAL/CARBON E86

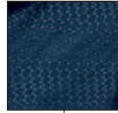
SCARLET/BLACK 48E

SCARLET/CARBON E90



Adjustable Quilted Hood

Embossed Pattern



Half-Elastic Cuffs



### BIONIC HOODED JACKET

**229017** Adult S-3XL

**229217** Youth S-XL

- Micron™ polyester lightweight, wind/water resistant fabric
- Embossed Micron blocking at hood, shoulders, & top sleeves with the Screenmesh pattern
- Quilted, polyester, taffeta lining
- Adjustable quilted hood with eyelets & concealed cord locks (on Adult only)
- Interior decoration zipper
- Inside zippered pocket
- Dual front zippered pockets
- Coordinating pants: 229531 | 229631 | 229731



BLACK/  
CARBON  
D86

CARBON/  
BLACK  
E84

NAVY/  
CARBON  
E81



### HOMEFIELD JACKET

**229111** Adult S-3XL

**229211** Youth S-XL

- Micron™ polyester is a lightweight, wind/water resistant fabric
- Adjustable hood with eyelets & concealed cord locks (on Adult only)
- Raglan sleeves
- Half-elastic cuffs and bottom
- Coordinating pants: 229531 | 229631 | 229731

Athletic Heather Fleece Lining



Front Zippered Pockets



BLACK/  
BLACK  
425

BLACK/  
ORANGE  
423

BLACK/  
SCARLET  
500

BLACK/  
WHITE  
420

NAVY/  
WHITE  
301

ROYAL/  
WHITE  
280

Available in Adult Only



SCARLET/  
WHITE  
408

NAVY/  
NAVY  
S14

MAROON/  
WHITE  
380

DK GREEN/  
WHITE  
438

PURPLE/  
WHITE  
450



Back



229527

229431



### POTOMAC JACKET

229527 Adult S-3XL

- Micro-Cord™ woven polyester fabric with a raised, ribbed texture
- Micromesh lined body and sleeves
- Concealed adjustable hood with eyelets and concealed cord locks stows when not in use
- Back vent with adjustable closure for full decoration access
- Front zippered pockets
- Dual inside pockets
- Rib-knit collar and cuffs
- Open bottom with adjustable elastic hidden drawcord (on Adult)
- Dropped tail



BLACK/  
GOLD  
421

BLACK/  
ORANGE  
423

BLACK/  
SCARLET  
500

DARK GREEN/  
WHITE  
438

MAROON/  
WHITE  
380



NAVY/  
GOLD  
302

NAVY/  
SCARLET  
S20

ROYAL/  
WHITE  
280

SCARLET/  
WHITE  
408



BLACK/  
WHITE  
420

CARBON/  
WHITE  
F52

NAVY/  
WHITE  
301



BLACK  
080

CARBON  
J96

NAVY  
065



## HOODED TAFFETA JACKET/FLEECE LINED

**3280** Adult S-4XL

**3281** Youth XS-L

- Outer shell of 100% nylon taffeta
- Body, sleeves and hood lined with 75% polyester/13% rayon/12% cotton grey heather fleece
- Hood with drawcord and sliders (youth has elastic)
- Set-in sleeves
- Reinforced slash front pockets with zippers
- Elastic cuffs and bottom



BLACK  
080

RED  
040

ROYAL  
060

NAVY  
065



MAROON  
045

PURPLE  
050

KELLY  
030

DARK  
GREEN  
035





P303



Zippered pocket on wearer's left sleeve



Hidden drawcord at waist on Ladies



Jacket folds up into zippered pocket



PACKABLE FULL ZIP JACKET

**229582** Adult S-4XL  
**229782** Ladies XS-3XL

- Micron™ polyester is a lightweight, wind/water-resistant fabric
- Ladies' fit on style 229782
- Adjustable hood with inside concealed cord locks
- Reflective trim
- Back vent with adjustable closure for full decoration access
- Set-in sleeves
- Front zippered pockets
- Spandex bound cuffs
- Open bottom
- Adjustable elastic hidden drawcord at bottom hem (Adult only)



ATHLETIC GREY 009    BLACK 080    CARBON 196    DARK GREEN 035



MAROON 745    NAVY 065    PURPLE 747

Available in Adult Only



ROYAL 060    SCARLET 083    OLIVE 039

229582



229559

223815



229782

221398



229516

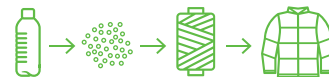


229716



# REPREVE®

Products are made with 100% post-consumer recycled plastic bottles.



## REPREVE® ECO COLLECTION



**229513**  
Repreve®  
Eco Vest



**229713**  
Ladies Repreve®  
Eco Vest



**229516**  
Repreve®  
Eco Jacket



**229716**  
Ladies Repreve®  
Eco Jacket



**222575**  
Repreve®  
Eco Polo



**222775**  
Ladies Repreve®  
Eco Polo



**222577**  
Repreve®  
Eco Hoodie



**P203**  
Repreve®  
Eco Cap



## REPREVE® ECO JACKET

Ladies' fit

**229516** Adult XS-3XL  
**229716** Ladies XS-3XL

- 100% polyester MicroTec woven face with durable water-repellent finish to keep you dry
- Made from Repreve® 50% recycled polyester quilting
- Weld engineered quilting that's decoration friendly
- 78% polyester/22% spandex inserts, peached for softness
- Ladies' fit on 229716
- Front zippered pockets
- Half-elastic cuffs
- Dropped tail



BLACK 080

CARBON 096

NAVY 065

OLIVE 039

STORM 932

TUNDRA HAZE PRINT 20M



Welded Quilting



Products are made with 100% post-consumer recycled plastic bottles.



Each of our Repreve® partnered garments features soft, sustainable fabric technology.



V57

229713



229011



229007



P203

229513



### REPREVE® ECO VEST

**229513** Adult S-3XL  
**229713** Ladies XS-3XL

- 100% polyester MicroTec woven face with durable water-repellent finish to keep you dry
- Made from Repreve® 50% recycled polyester fill quilting for lightweight warmth
- Weld engineered quilting that's decoration friendly
- Ladies' fit on style 229713
- Front zipper with antique nickel zipper pull and storm flap
- Side seam pockets
- Dropped tail on Ladies' style 229713



BLACK 080    CARBON 196    NAVY 065    OLIVE 039    STORM 932    TUNDRA HAZE PRINT 20M    WHITE 005



**NEW**

### V-STREET FULL-ZIP JACKET

- 223547** Adult S-3XL
- 223647** Youth S-XL
- 223747** Ladies S-2XL

- 100% polyester double-knit
- Ladies fit on style 223747
- Set-in sleeves
- Front pockets
- Dual inside pockets
- Striped rib-knit collar, cuffs and bottom band



ATHLETIC HEATHER/  
WHITE  
152

BLACK/  
WHITE  
420

NAVY/  
WHITE  
301



ROYAL/  
WHITE  
280

SCARLET/  
WHITE  
408

WHITE/  
ATHLETIC HEATHER  
510



223747

222702



223547

229559



229521



229721



Adjustable Elastic Hidden Drawcord



### FEATHERLIGHT SOFT SHELL JACKET

**229521** Adult XS-4XL

**229721** Ladies XS-3XL

- Featherlight soft shell fabric is 100% bonded polyester with mechanical stretch and durable water-repellent finish
- Ladies' fit on 229721
- Raglan sleeves
- Front zippered pockets
- Dual inside pockets
- Spandex bound cuffs
- Open bottom with adjustable elastic hidden drawcord



ARCTIC HAZE PRINT 19M

BLACK 080

CARBON J96

DARK GREEN 035



MAROON 045

NAVY 065

ROYAL 060

SCARLET 083



**CHILL FLEECE 2.0  
COLLECTION**

**ecoREVIVE™**  
SUSTAINABLE FABRIC TECHNOLOGY

6852



6854



**NEW**

**CHILL FLEECE VEST 2.0**

**6852** Adult S-3XL  
**6854** Ladies XS-2XL

- Eco-Revive® product featuring 8 ounce, 70% recycled polyester/30% polyester
- Ladies' fit on style 6854
- Hanger loop label
- Full front zipper with zipper garage to keep elements out
- Front zippered pockets
- Spandex bound sleeve holes
- Open bottom

**MORE FROM THE  
CHILL FLEECE 2.0 COLLECTION**



**COORDINATING  
1/2 ZIP PULLOVER**  
**6855 | 6856 | 6857**



**COORDINATING  
HEADBAND**  
**6893**



BLACK  
080

GRAPHITE  
059

NAVY  
065

OLIVE  
039

OYSTER  
531

STORM  
932



P304

6893

**CHILL FLEECE 2.0 FULL ZIP HOODIE**

|             |        |        |
|-------------|--------|--------|
| <b>6858</b> | Adult  | S-3XL  |
| <b>6859</b> | Youth  | XS-L   |
| <b>6860</b> | Ladies | XS-2XL |

- Eco-Revive product featuring 8 ounce, 70% recycled polyester/30% polyester
- Ladies' fit on style 6860
- Hanger loop label
- 3-piece hood with spandex binding
- Set-in sleeves
- Front zippered pockets with spandex binding detail
- Dual inside pockets
- Self-fabric cuffs
- Open bottom



BLACK  
080

GRAPHITE  
059

NAVY  
065

ROYAL  
060

Available in Adult & Ladies Only



SCARLET  
083

DK GREEN  
035

MAROON  
745

Available in Adult & Ladies Only



OLIVE  
039

OYSTER  
53T

STORM  
932



6858

229559



6860

221398



**COORDINATING PULLOVER**  
6863 | 6864

6862



6861



**MICRO-LITE FLEECE FULL ZIP JACKET**

- 6861**    Adult    XS-3XL  
4XL in select colors
- 6862**    Ladies    XS-2XL  
3XL in select colors

- Eco-Revive product featuring 5.3 ounce, 70% recycled polyester/30% polyester
- Ladies' fit on style 6862
- Hanger loop label
- Set-in sleeves
- Side seam pockets
- Open bottom

Available in Adult 4XL & Ladies 3XL



BLACK 080    GRAPHITE 059    NAVY 065    OYSTER 53T

Available in Adult 4XL & Ladies 3XL



ROYAL 060    SCARLET 083



ATHLETIC GREY 009    DK GREEN 035    MAROON 745    STORM 932





### HERITAGE JACKET

**229140** Adult S-4XL  
5XL in select colors

- Duraweav™ fabric has a smooth oxford nylon surface
- Quilted nylon lining
- 15mm matte painted enamel snap front
- Set-in sleeves
- Front pockets
- Inside valuables pocket
- Rib-trim collar, cuffs, and bottom hem

Available in 4XL-5XL



|                        |                       |                        |                          |              |             |
|------------------------|-----------------------|------------------------|--------------------------|--------------|-------------|
| BLACK/<br>WHITE<br>420 | NAVY/<br>WHITE<br>301 | ROYAL/<br>WHITE<br>280 | SCARLET/<br>WHITE<br>408 | BLACK<br>080 | NAVY<br>065 |
|------------------------|-----------------------|------------------------|--------------------------|--------------|-------------|



|                                    |                                    |  |                         |                                   |                                   |
|------------------------------------|------------------------------------|--|-------------------------|-----------------------------------|-----------------------------------|
| BLACK/<br>LT GOLD/<br>WHITE<br>R21 | BLACK/<br>SCARLET/<br>WHITE<br>R20 | DARK<br>GREEN/<br>LT GOLD/<br>WHITE<br>S06 | MAROON/<br>WHITE<br>380 | BLACK/<br>ORANGE/<br>WHITE<br>611 | NAVY/<br>LT GOLD/<br>WHITE<br>S30 |
|------------------------------------|------------------------------------|--|-------------------------|-----------------------------------|-----------------------------------|



### SATIN BASEBALL JACKET/STRIPED TRIM

**3610** Adult XS-3XL

- Outer shell of 100% nylon satin
- Lined with 100% polyester brushed tricot
- Raglan sleeves
- Front pockets
- Rib-knit collar, cuffs and bottom



|                                   |                                |                                   |                                     |
|-----------------------------------|--------------------------------|-----------------------------------|-------------------------------------|
| COLUMBIA<br>BLUE/<br>WHITE<br>293 | LIGHT<br>PINK/<br>WHITE<br>465 | METALLIC<br>GOLD/<br>WHITE<br>259 | METALLIC<br>SILVER/<br>WHITE<br>260 |
|-----------------------------------|--------------------------------|-----------------------------------|-------------------------------------|



|                        |                      |                        |                       |
|------------------------|----------------------|------------------------|-----------------------|
| BLACK/<br>WHITE<br>420 | RED/<br>WHITE<br>400 | ROYAL/<br>WHITE<br>280 | NAVY/<br>WHITE<br>301 |
|------------------------|----------------------|------------------------|-----------------------|



## HOODED COACH'S JACKET

**3102**    Adult    S-3XL

- Outer shell of 100% nylon taffeta
- Lined with 100% polyester brushed tricot
- Tear away label
- Hood with drawcord
- Raglan sleeves
- Front pockets
- Elastic cuffs



GOLD  
025

BLACK  
080

DARK  
GREEN  
035



MAROON  
045

NAVY  
065

RED  
040



ROYAL  
060

WHITE  
005





### NYLON COACH'S JACKET/LINED

**3100** Adult S-3XL  
4XL & 5XL in select colors

**3101** Youth XS-L

- Outer shell of 100% nylon taffeta
- Lined with 100% polyester brushed tricot
- Tear away label
- Raglan sleeves
- Front pockets
- Elastic cuff

Available in Adult  
S-5XL & Youth



BLACK  
080

NAVY  
065

Available in Adult S-3XL



RED  
040

ROYAL  
060

PURPLE  
050



DARK GREEN  
035

MAROON  
045

OLIVE DRAB  
GREEN  
179

KELLY  
030

WHITE  
005



BROWN  
079

GRAPHITE  
059

KHAKI  
010

POWER  
PINK  
809

COLUMBIA  
BLUE  
089



ORANGE  
029

GOLD  
025

LIGHT  
PINK  
095





COORDINATING SHORTS

229556 | 229656



Dropped Tail



WELD FULL ZIP JACKET

229543 Adult XS-3XL

- 90% polyester/10% spandex
- Zippered sleeve pocket with media port
- Raglan sleeves
- Locking front and dual inside pockets
- Spandex bound cuff
- Open bottom with adjustable elastic hidden drawcord
- Alternate pants: 229559/229799



BLACK/  
WHITE  
420

CARBON/  
WHITE  
F52

FOREST/  
WHITE  
436

KELLY/  
WHITE  
340

MAROON/  
WHITE  
380



NAVY/  
WHITE  
301

ORANGE/  
WHITE  
320

ROYAL/  
WHITE  
280

SCARLET/  
WHITE  
408

WHITE/  
CARBON  
E94



WELD JOGGERS



229559 Adult XS-3XL

- 90% polyester/10% spandex
- Covered elastic waistband with outside drawcord and silicone dipped tips (inside drawcord on XS-S)
- Front pockets
- Back locking welt pocket
- Tapered leg
- Zipper on outside lower leg
- Articulated seaming at the knees



NAVY  
065

BLACK  
080

CARBON  
J96



Pleated Back Detailing



Thumbhole

Reflective Accent Around Front Zipper



### LADIES WELD JACKET

**229743** Ladies XS-2XL

- 90% polyester/10% spandex
- Low profile collar
- Raglan sleeves
- Locking welt front pockets
- Dual inside pockets
- Elastic cuffs and bottom



BLACK 080

CARBON 196

NAVY 065

WHITE 005



### LADIES WELD JOGGER

**229799** Ladies XS-2XL

- 90% polyester/10% spandex
- Covered elastic waistband with outside drawcord and silicone dipped tips (inside drawcord on XS-S)
- Front pockets
- Covered elastic cuff at leg opening
- Tapered leg
- Coordinating Adult 229559



BLACK 080

CARBON 196

NAVY 065

Covered Elastic Cuff



223558

229531



223758

229731



**NEW**

SERIESX FULL-ZIP JACKET

|               |        |        |
|---------------|--------|--------|
| <b>223558</b> | Adult  | S-3XL  |
| <b>223658</b> | Youth  | S-XL   |
| <b>223758</b> | Ladies | XS-2XL |

- Micron™ polyester is a lightweight, wind/water-resistant fabric
- 100% polyester micromesh lining
- Ladies fit on style 223758
- Set-in sleeves
- Front zippered pockets
- Elastic cuffs
- Adjustable bottom hem with hidden shockcord closure in right pocket on Adult and Ladies



BLACK  
080

CARBON  
196

NAVY  
065

MORE FROM THE SERIESX COLLECTION



**229533 | 229633 | 229733**  
SeriesX Pullover



229528

229728

229531

229731

### SERIESX HOODED JACKET



- 229528** Adult S-3XL
- 229628** Youth S-XL
- 229728** Ladies XS-2XL

- Micron™ polyester is a lightweight, wind/water-resistant fabric
- 100% polyester micromesh lining
- Ladies' fit on 229728
- 3-piece hood with spandex binding
- Set-in sleeves
- Front zippered pockets
- Elastic cuffs
- Adjustable bottom hem with hidden shockcord closure in right pocket on Adult & Ladies only



### SERIESX PANT



- 229531** Adult S-3XL
- 229631** Youth S-XL
- 229731** Ladies XS-2XL

- Micron™ polyester is a lightweight, wind/water resistant fabric
- 100% polyester micromesh lining
- Ladies' fit on 229731
- Exposed brushed elastic waistband with inside drawcord
- Side seam pockets
- Tapered leg
- Articulated seaming at the knees
- Covered elastic cuff at leg opening
- Zipper on outside lower leg



Back Welt Pocket



Ladies Fit



### RETRO GRADE JACKET

- 229561** Adult S-3XL
- 229661** Youth S-XL
- 229761** Ladies XS-2XL

- Dry-Excel™ 100% polyester performance terry
- Ladies' fit on style 229761
- 3-piece mesh lined hood with spandex binding
- Raglan sleeves
- Front pockets
- Spandex bound cuff

Available in Adult & Ladies Only



BLACK/  
ORANGE  
423

BLACK/  
SCARLET  
500

BLACK/  
WHITE  
420

GRAPHITE/  
WHITE  
R04

PURPLE/  
WHITE  
450

FOREST/  
WHITE  
436

MAROON/  
WHITE  
380



NAVY/  
SCARLET  
S20

NAVY/  
WHITE  
301

ROYAL/  
WHITE  
280

SCARLET/  
WHITE  
408



### RETRO GRADE PANT

- 229562** Adult S-3XL
- 229662** Youth S-XL
- 229762** Ladies XS-2XL

- Dry-Excel™ 100% polyester performance terry
- Ladies' fit on style 229762
- Exposed brushed elastic waistband with inside drawcord
- Front pockets
- Back welt pocket
- Tapered leg

Available in Adult & Ladies Only



BLACK/  
WHITE  
420

NAVY/  
WHITE  
301

ROYAL/  
WHITE  
280

GRAPHITE/  
WHITE  
R04

SCARLET/  
WHITE  
408

PURPLE/  
WHITE  
450

FOREST/  
WHITE  
436

MAROON/  
WHITE  
380



Zipper on  
Outside  
Lower Leg

Ladies Fit



229561



229562



229762



Back

229761

LIMITLESS JACKET Dry-Excel™

- 229579** Adult S-3XL
- 229679** Youth S-XL
- 229779** Ladies XS-2XL

- Dry-Excel™ 100% polyester wicking double knit with mesh texture
- Ladies' fit on 229779
- Raglan sleeves
- Front zippered pockets



LIMITLESS PANT Dry-Excel™

- 229580** Adult S-3XL
- 229680** Youth S-XL
- 229780** Ladies XS-2XL

- Dry-Excel™ 100% polyester wicking double knit mesh texture
- Pinhole micromesh back knee inserts
- Ladies' fit on 229780
- Covered elastic waistband with inside drawcord
- Side seam pockets
- Tapered leg
- Zipper on outside lower leg



COORDINATING HOODIE  
**222584**



229007



Mesh



Zippered leg



229779

229780



**NEW**

### CROSTOWN JACKET

- 223530** Adult S-3XL
- 223630** Youth S-XL
- 223730** Ladies S-2XL

- Dry-Excel™ 100% polyester double-knit
- Dry-Excel™ 100% polyester mesh inserts
- Ladies' fit on style 223730
- Set-in sleeves
- Front zippered pockets
- Open bottom
- Dropped tail hem



BLACK/BLACK 425    BLACK/WHITE 420    GRAPHITE/WHITE R04    NAVY/WHITE 301



ROYAL/WHITE 280    SCARLET/WHITE 408    WHITE/BLACK 226



223730

223530

223731

223531



**NEW**

### CROSTOWN PANT

- 223531** Adult S-3XL
- 223631** Youth S-XL
- 223731** Ladies S-2XL

- Dry-Excel™ 100% polyester double-knit
- Dry-Excel 100% polyester mesh inserts
- Ladies' fit on style 222731
- Covered elastic waistband with inside drawcord
- Side seam pockets
- Tapered leg
- Zipper on outside lower leg



BLACK/BLACK 425    BLACK/WHITE 420    GRAPHITE/WHITE R04    NAVY/WHITE 301    ROYAL/WHITE 280    SCARLET/WHITE 408    WHITE/BLACK 226



# MEDALIST 2.0 COLLECTION



## COORDINATING PULLOVER

4386 | 4388

## MEDALIST JACKET 2.0

**4395** Adult S-3XL  
**4396** Youth XS-L  
**4397** Ladies XS-2XL

- Heavyweight 100% polyester matte brushed tricot
- Ladies' fit on style 4397
- Heat sealed label
- Set-in sleeves
- Front seam pockets
- Alternate pants 7731/7732/7733



BLACK/ GOLD 421 | BLACK/ ORANGE 423 | BLACK/ RED 424 | BLACK/ VEGAS GOLD 255 | BLACK/ WHITE 420 | DARK GREEN/ WHITE 438 | GRAPHITE/ WHITE R04



KELLY/ WHITE 340 | MAROON/ WHITE 380 | NAVY/ VEGAS GOLD 256 | NAVY/ WHITE 301 | PURPLE/ WHITE 450 | RED/ WHITE 400 | ROYAL/ WHITE 280

## MEDALIST PANT 2.0

**7760** Adult S-3XL  
**7761** Youth XS-L  
**7762** Ladies XS-2XL

- Heavyweight 100% polyester matte brushed tricot
- Ladies' fit on style 7762
- Heat sealed label
- Covered elastic waistband with inside drawcord
- Side seam pockets
- Zipper on outside lower leg



BLACK/ GOLD 421 | BLACK/ ORANGE 423 | BLACK/ RED 424 | BLACK/ WHITE 420 | DARK GREEN/ WHITE 438 | GRAPHITE/ WHITE R04 | KELLY/ WHITE 340



MAROON/ WHITE 380 | NAVY/ VEGAS GOLD 256 | NAVY/ WHITE 301 | PURPLE/ WHITE 450 | RED/ WHITE 400 | ROYAL/ WHITE 280 | BLACK/ VEGAS GOLD 255

Available in Adult & Ladies only



4395

7762

7760



4397



Back Yoke



Decoration Available on PVC



Air mesh vented back for breathability



Detachable Hood with Drawcord on Adult



### CLEAR RAIN JACKET

|             |       |       |
|-------------|-------|-------|
| <b>3160</b> | Adult | S-2XL |
| <b>3161</b> | Youth | S-L   |

- 100% PVC
- Unisex fit
- Front zipper with outside storm flap and snaps
- Raglan sleeves
- Front pockets with flaps and snap closure
- Open bottom



CLEAR 100



Side Seam Pockets

### TAPERED LEG PANT

|             |        |        |
|-------------|--------|--------|
| <b>7731</b> | Adult  | XS-3XL |
| <b>7732</b> | Youth  | S-L    |
| <b>7733</b> | Ladies | XS-2XL |

- Heavyweight 100% polyester matte brushed tricot
- Covered elastic waistband with inside drawcord
- Tapered fit
- Back yoke
- Zipper on outside lower leg

Ladies Fit

Available in Adult only

Available in Adult & Ladies only



RED 040



ROYAL 060



BLACK 080



NAVY 065