



**ALL TEAM**  
**SPORTS**

**COSMICS**

**VOLLEYBALL**

**12**

coolcore





228015



Cut Shot II



Attack Block

Attack Block



**FREESTYLE SUBLIMATED  
SLEEVELESS TURBO JERSEY**

**341130** Adult S-3XL  
**341131** Youth S-XL

- 100% polyester smooth wicking knit body
- Tag-free label
- Garment protects against the sun with 35+ UPF



Cut Shot II



**FREESTYLE SUBLIMATED SHORTS**

**341160** Adult S-3XL  
**341161** Youth S-XL

- 100% polyester smooth wicking knit body
- Garment protects against the sun with 50+ UPF
- Tag-free label
- Covered elastic waistband with inside drawcord
- 6.5-inch inseam
- Youth inseam graded





LADIES FREESTYLE SUBLIMATED SLEEVELESS TANK

- 341114** Ladies XS-3XL
- 341115** Girls S-XL

- 84% polyester/16% spandex knit



Racerback



Tapeshot



228016



Back



Spike



LADIES FREESTYLE SUBLIMATED  
TURBO LONG SLEEVE JERSEY

**341122** Ladies S-2XL  
**341123** Girls S-XL

- 100% polyester interlock smooth knit
- Tag-free label
- Raglan sleeves



Double  
Block





Double Block



LADIES FREESTYLE  
SUBLIMATED LONG  
SLEEVE STRETCH JERSEY

**228359** Ladies S-3XL  
**228459** Girls S-XL

- 84% polyester/16% spandex knit
- Flatlock stitching provides comfort and helps prevent chafing
- Raglan sleeves

228359

Cross Play



345582



Spike



LADIES FREESTYLE  
SUBLIMATED CAP  
SLEEVE JERSEY

**228358** Ladies S-3XL  
**228458** Girls S-XL

- 84% polyester/16% spandex knit
- Garment protects against the sun with 50+ UPF
- Flatlock stitching provides comfort and helps prevent chafing
- Raglan cap sleeves



Cut Shot



LADIES FREESTYLE  
SUBLIMATED SHORT  
SLEEVE JERSEY

**341110** Ladies S-3XL  
**344110** Girls S-XL

- 84% polyester/16% spandex knit
- Garment protects against the sun with 50+ UPF
- Tag-free label
- Flatlock stitching provides comfort and helps prevent chafing
- Raglan sleeves





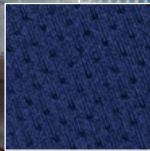
LADIES TRUHIT TRI-COLOR  
LONG SLEEVE JERSEY

**342242** Ladies S-3XL  
**342243** Girls S-L

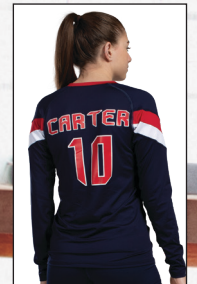
- 84% polyester/16% spandex knit with color secure® technology that helps prevent dye migration
- 90% polyester/10% spandex wicking mesh inserts with color secure® technology
- Tag-free label
- High Five logo on right chest
- Strategically placed seams for maximum mobility and comfort
- Raglan sleeves
- Designed to conform to NFHS specifications



345592



Wicking mesh insert



Back



BLACK/  
GRAPHITE/  
WHITE  
489

DARK GREEN/  
BLACK/  
WHITE  
520

ELECTRIC YELLOW/  
BLACK/  
WHITE  
88N

GRAPHITE/  
BLACK/  
WHITE  
195

MAROON/  
BLACK/  
WHITE  
524

NAVY/  
SCARLET/  
WHITE  
300

NAVY/  
GRAPHITE/  
WHITE  
371



ORANGE/  
BLACK/  
WHITE  
322

PURPLE/  
BLACK/  
WHITE  
497

POWER BLUE/  
BLACK/  
WHITE  
837

ROYAL/  
BLACK/  
WHITE  
526

SCARLET/  
BLACK/  
WHITE  
952

WHITE/  
BLACK/  
GRAPHITE  
X26



Wicking mesh insert



LADIES TRUHIT LONG SLEEVE JERSEY

342212 Ladies S-3XL  
342213 Girls S-L

- 84% polyester/16% spandex knit with color secure® technology that helps prevent dye migration
- 90% polyester/10% spandex wicking mesh inserts with color secure® technology
- Tag-free label
- High Five logo on right chest
- Strategically placed seams for maximum mobility and comfort
- Raglan sleeves
- Designed to conform to NFHS specifications for a solid jersey



345592



BLACK 080    SCARLET 083    MAROON 745    PURPLE 747    POWER PINK 809    POWER BLUE 812



WHITE 005    FOREST 038    GRAPHITE 059    ROYAL 060    NAVY 065





## LADIES MAVEN JERSEY

**1322** Ladies XS-2XL

- 84% polyester/16% spandex knit
- Ultra tight fit
- Tag-free label
- Raglan sleeves
- Designed to conform to NFHS specifications for a solid jersey



BLACK  
080

GRAPHITE  
059

NAVY  
065



ORANGE  
029

PURPLE  
050

POWER  
PINK  
809



RED  
040

ROYAL  
060

WHITE  
005



Back



Wicking mesh insert

223846



345592



LADIES TRUHIT SHORT SLEEVE JERSEY

342222 Ladies S-3XL

342223 Girls S-L

- 84% polyester/16% spandex knit with color secure® technology that helps prevent dye migration
- 90% polyester/10% spandex wicking mesh inserts with color secure® technology
- Tag-free label
- High Five logo on right chest
- Strategically placed seams for maximum mobility and comfort
- Raglan sleeves
- Designed to conform to NFHS specifications for a solid jersey



BLACK 080 FOREST 038 GRAPHITE 059 MAROON 745



NAVY 065 POWER BLUE 812 POWER PINK 809 PURPLE 747



ROYAL 060 SCARLET 083 WHITE 005





### LADIES FULL FORCE SHORT SLEEVE JERSEY

1682 Ladies S-2XL

- 100% polyester propelit micromesh wicking knit
- Tag-free label
- Double layer V-neck collar
- Set-in sleeves



BLACK/WHITE 420  
 NAVY/WHITE 301  
 ROYAL/WHITE 280  
 SCARLET/WHITE 408  
 WHITE/GRAPHITE 751



345582



### LADIES BLASH JERSEY

1218 Ladies S-2XL  
1219 Girls S-L

- 100% polyester wicking smooth knit
- Tag-free label
- Contrast color collar and princess seams
- Set-in cap sleeves



BLACK/WHITE 420  
 WHITE/BLACK 226  
 RED/WHITE 400  
 ROYAL/WHITE 280  
 NAVY/WHITE 301  
 PURPLE/WHITE 450



LIME/WHITE 693  
 POWER PINK/WHITE 468  
 POWER BLUE/WHITE 834  
 POWER ORANGE/WHITE Y60

Available in [ Ladies only ]



POWER YELLOW/WHITE 327



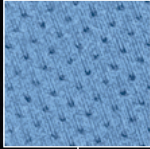


## LADIES COLOR CROSS JERSEY

**342232** Ladies S-3XL  
**342233** Girls S-L

- 100% polyester wicking knit with color secure® technology that helps prevent dye migration
- 92% polyester/8% spandex wicking pinhole mesh back and side insert with color secure® technology
- Tag-free label
- High Five logo on right chest
- Raglan sleeves

Wicking mesh  
insert



Back



345582



BLACK/  
WHITE  
420

COLUMBIA BLUE/  
WHITE  
293

GRAPHITE/  
WHITE  
R04

NAVY/  
WHITE  
301

ROYAL/  
WHITE  
280

SCARLET/  
WHITE  
408

WHITE/  
WHITE  
230





342272



345594

POWERED BY  
**COOLCORE®**



**NEW**

### LADIES TRUHIT SLEEVELESS JERSEY

**342272** Ladies XS-3XL

- 84% polyester/16% elastane Coolcore® fabric with color secure® technology that helps prevent dye migration
- 92 polyester/8% elastane mesh inserts
- Garment protects against the sun with 50+ UPF
- Tag-free label



BLACK  
080

NAVY  
065

ROYAL  
060

SCARLET  
083

WHITE  
005

222839



**NEW**

### LADIES TRUHIT MODERN FIT SHORTS

**345594** Ladies S-3XL

**345595** Girls M-L

- 89% polyester/11% elastane spandex knit with Coolcore® fabric technology
- Fits close to body
- Tag-free label
- High waisted, wide flat waistband for secure fit and comfort
- Flatlock stitching provides comfort and helps prevent chafing



BLACK  
080

GRAPHITE  
059

NAVY  
065

6885





3-inch Inseam (Girls inseam graded)



### LADIES TRUHIT SHORTS

**345592** Ladies S-3XL  
**345593** Girls S-L



- 88% polyester/12% spandex compression
- Tag-free label
- Low rise, wide flat no-dig waistband for secure fit and comfort
- Flatlock stitching provides comfort and helps prevent chafing
- Lined gusset

4-inch Inseam (Girls inseam graded)



### LADIES KNOCK-OUT SHORTS

**345582** Ladies XS-2XL  
**345583** Girls S-L



- Heavyweight 90% polyester/10% spandex knit
- Low rise, wide flat waistband for secure fit and comfort
- No front seam
- U-shaped gusset
- Flatlock stitching provides comfort and helps prevent chafing



3 1/2-inch Inseam



### LADIES HYPERFORM FITTED SHORTS

**2625** Ladies XS-2XL



- Heavyweight 88% polyester/12% spandex knit
- Tag-free label
- Low rise, soft brushed back exposed elastic waistband provides comfort
- No front seam
- U-shaped gusset
- Flatlock stitching provides comfort and helps prevent chafing

2 1/2-inch Inseam (Girls inseam graded)



### LADIES DARE SHORTS

**1232** Ladies S-2XL  
**1233** Girls S-L



- Heavyweight 88% polyester/12% spandex knit
- Tag-free label
- Low rise, wide flat waistband for secure fit and comfort
- No front seam
- U-shaped gusset
- Flatlock stitching provides comfort and helps prevent chafing



### LADIES V-STREET FULL-ZIP JACKET

223747 Ladies S-2XL

- 100% polyester double-knit
- Woven label
- Set-in sleeves
- Front pockets
- Dual inside pockets
- Striped rib-knit collar, cuffs and bottom band



### LADIES CROSSTOWN JACKET



223730 Ladies S-2XL

**NEW** Tall MT-2XLT

- Dry-Excel™ 100% polyester double-knit
- Dry-Excel™ 100% polyester mesh inserts
- Woven label
- Set-in sleeves
- Front zippered pockets
- Open bottom
- Dropped tail hem



### LADIES CROSSTOWN PANT



223731 Ladies S-2XL

**NEW** Tall MT-2XLT

- Dry-Excel™ 100% polyester double-knit
- Dry-Excel 100% polyester mesh inserts
- Woven label
- Covered elastic waistband with inside drawcord
- Side seam pockets
- Tapered leg
- Zipper on outside lower leg



223747



222702

223730



223731





Thumbhole

223798

LADIES VENTURA SOFT KNIT HOODIE



222798 Ladies XS-2XL

- Ventura Suede Knit 6.34-ounce
- Solids, 89% recycled polyester/11% spandex
- Heathers, 45% recycled polyester/44% polyester/11% spandex
- Tag-free label
- 3-panel crossover hood
- Set-in sleeves with thumbholes for warmth
- Self-fabric cuffs and bottom band
- Side vents



BIRCH 907    BLACK 080    CARBON HEATHER 083    DARK GREEN 035    GREY HEATHER 013    LAVENDER J63    MAROON 745



NAVY 065    OLIVE 039    ORCHID 47V    ROYAL 060    SCARLET 083    STORM 932    TERRACOTTA J46



223799

LADIES VENTURA SOFT KNIT JOGGER



222799 Ladies XS-2XL

- Ventura Suede Knit 6.34-ounce
- Solids, 89% recycled polyester/11% spandex
- Heathers, 45% recycled polyester/44% polyester/11% spandex
- Tag-free label
- Covered elastic waistband with outside drawcord
- Front pockets with inner valuables pocket inside left pocket
- Back pocket with zipper
- Tapered leg



BLACK 080    CARBON HEATHER E83    GREY HEATHER 013    NAVY 065    OLIVE 039    STORM 932



### GEAR BAG

**511** 22"W x 11"H x 11"D

- 420-denier nylon with PVC coating
- Zippered main compartment has large U-shaped opening with two zipper pulls
- Zippered front pocket
- Separate zippered compartments at each end
- Web handles with self-fabric handle wrapper, reinforced at stress points
- Adjustable and detachable shoulder strap
- Piping trim for durability
- Removable inside bottom board



BLACK  
080

RED  
040

NAVY  
065

PURPLE  
050

FOREST  
GREEN  
034



### SMALL GEAR BAG

**417** 20"W x 10"H x 10"D

- 600-denier polyester with PVC coating
- Zippered main compartment has large U-shaped opening with two zipper pulls
- Separate zippered compartments at each end
- Zippered front pocket
- Matching web handles with self-fabric handle wrapper, reinforced at stress points
- Adjustable and detachable matching shoulder strap with rubber shoulder guard
- Self-fabric piping for added durability
- Removable inside bottom board



BLACK  
080

RED  
040

ROYAL  
060

NAVY  
065





**NEW**

### UNITED BACKPACK

**327930** 11.5"W x 19"H x 9.5"D

- 600-denier polyester with PVC coating
- 210-denier nylon with PVC coating
- Large main interior compartment with two corded zipper pulls
- Large front ventilated compartment with two corded zipper pulls
- Zippered pocket with brushed interior for valuables
- Two mesh side pockets
- Adjustable buckles on sides to secure baseball bat
- Internal zippered mesh valuables pocket
- Key clip inside main compartment
- Padded back for support and comfort
- Web handle at top of backpack
- Adjustable padded shoulder straps



BLACK 080

GRAPHITE/BLACK 172

NAVY/BLACK 308



Front pocket with corded zipper pull with hidden inside mesh ball holder that fits volleyball, soccer ball, or basketball

### FREE FORM BACKPACK



**327895** 13" W x 19" H x 9"D

- 900-denier heavyweight 100% polyester with PU coating
- Matte PVC bottom and sides for durability
- Large main compartment for easy decoration
- Zippered pocket with brushed interior for valuables
- Padded back & shoulder straps
- Hidden key clip
- Internal zippered mesh valuables pocket



BLACK 080

CARBON HEATHER E83

GRAPHITE 059



NAVY 065

ROYAL 060

SCARLET 083



Inside divider for shoes or damp items



Mesh ball holder fits volleyball, soccer or basketballs

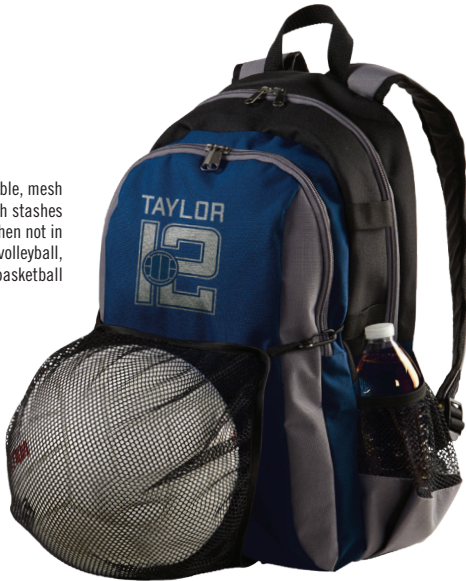
Smooth finish top handle for comfort



Two side mesh pockets

Web handle at top of backpack

Convertible, mesh pouch stashes away when not in use. Fits volleyball, soccer or basketball



Reinforced, multi-use side pouch pockets with bat straps

Two mesh side pockets for water bottle with pass-thru for lacrosse stick or bat



ALL SPORT BACKPACK

327890 12"W x 18.5"H x 7"D

- 100% polyester heavy denier
- Large main interior compartment
- Front zipper pocket with deep, interior pouch holds shoes or accessories



Without mesh ball holder



- BLACK/ GRAPHITE/ BLACK 052
- GRAPHITE/ GRAPHITE/ BLACK 083
- FOREST/ GRAPHITE/ BLACK 088
- MAROON/ GRAPHITE/ BLACK 089
- NAVY/ GRAPHITE/ BLACK 093
- ORANGE/ GRAPHITE/ BLACK 090
- PURPLE/ GRAPHITE/ BLACK 091
- ROYAL/ GRAPHITE/ BLACK 084
- SCARLET/ GRAPHITE/ BLACK 086

Web handle at top of backpack

Two zippered side compartments with mesh panels



Mesh paneled zippered interior ball compartment

Mesh ball holder fits volleyball, soccer or basketballs



PLAYER BACKPACK

327850 18"W x 17"H x 9"D

- Heavy duty 600-denier polyester with soft PVC backing
- Adjustable padded shoulder straps



- ATHLETIC GOLD/ BLACK/ WHITE 657
- BLACK/ BLACK/ WHITE 420
- FOREST/ BLACK/ WHITE 148
- GRAPHITE/ BLACK/ WHITE 073
- MAROON/ BLACK/ WHITE 524
- NAVY/ BLACK/ WHITE 311
- ORANGE/ BLACK/ WHITE 322
- PURPLE/ BLACK/ WHITE 497
- ROYAL/ BLACK/ WHITE 526
- SCARLET/ BLACK/ WHITE 952



TRI-COLOR DRAWSTRING BACKPACK

1920 14"W x 18"H

- 210-denier nylon with PU coating
- Hemmed top with drawcord closure
- Zippered front pocket
- Web tab at bottom corner for reinforcement



- BLACK/ BLACK/ WHITE 529
- RED/ BLACK/ WHITE 110
- ROYAL/ BLACK/ WHITE 526
- NAVY/ BLACK/ WHITE 311
- GOLD/ BLACK/ WHITE 249
- PURPLE/ BLACK/ WHITE 497
- KELLY/ BLACK/ WHITE 616





Gradient



**FREESTYLE SUBLIMATED  
COMPRESSION SLEEVE**

**228199** Adult S/M-L/XL  
**228299** Youth OS

- Dry-Excel™ performance blended yarns are 75% acrylic/15% polyester/4% spandex/4% elastic/2% nylon
- Garment protects against the sun with 50+ UPF
- Ultra tight fit
- Flatlock stitching provides comfort and helps prevent chafing



**NEW**

**ARM SLEEVES POWERED  
BY COOLCORE®**

**222839** Adult S/M, L/XL  
**222939** Youth L/XL

- Dry-Excel™ 84% polyester/16% elastane Coolcore® fabric
- Garment protects against the sun with 50+ UPF
- Ultra tight fit
- Flatlock stitching provides comfort and helps prevent chafing
- Sold as a pair



BLACK 080    NAVY 065    ROYAL 060    SCARLET 040    WHITE 005



TONAL CREW SOCK

NEW

6885 Adult S-XL

- 68.3% polyester/26.8% cotton/2.3% rubber/1.9% nylon/0.7% spandex
- Calf length
- Rib leg construction with jersey knit foot and ankle
- Extra cushioning and support in areas of the foot and ankle that are susceptible to rubbing, impact or injury
- Breathable knit mesh on upper foot for improved air circulation
- Tonal Heather color at sole and toe areas



BLACK 080 DARK GREEN 035 GRAPHITE 059 MAROON 745 NAVY 065



POWER PINK 809 PURPLE 747 ROYAL 060 SCARLET 083 WHITE 005



ELITE MULTI-SPORT SOCK

6006 Large [10-13]  
Medium [9-11]  
Small [7-9]

- 75% acrylic/15% polyester/4% spandex/4% elastic/2% nylon
- Knee length
- Lightweight microfiber yarns offer support while remaining soft to the touch



VEGAS GOLD 023 BLACK 080 WHITE 005 RED 040 ROYAL 060 COLUMBIA BLUE 089



NAVY 065 ORANGE 029 GOLD 025 PURPLE 747 DARK GREEN 035 LIME 096



POWER YELLOW 810 GRAPHITE 059 KELLY 030 MAROON 045 CARDINAL J36 POWER PINK 809



COLOR BLOCK CREW SOCK

6091 Xlarge [13-15]  
Large [10-13]  
Medium [9-11]  
Small [7-9]

- 55% polyester/22% nylon/20% cotton/3% spandex wicking yarn
- Calf length
- Extra cushioning and support in areas of the foot and ankle that are susceptible to rubbing, impact or injury
- Left and right sock construction for a better fit
- Arch compression reduces fatigue and aids circulation



BLACK/GOLD 421 BLACK/WHITE 420 NAVY/WHITE 301 ORANGE/WHITE 320 POWER PINK/WHITE 468 PURPLE/WHITE 450 RED/WHITE 400



ROYAL/GOLD 281 ROYAL/WHITE 280 WHITE/BLACK 226 MAROON/WHITE 380 GRAPHITE/WHITE R04