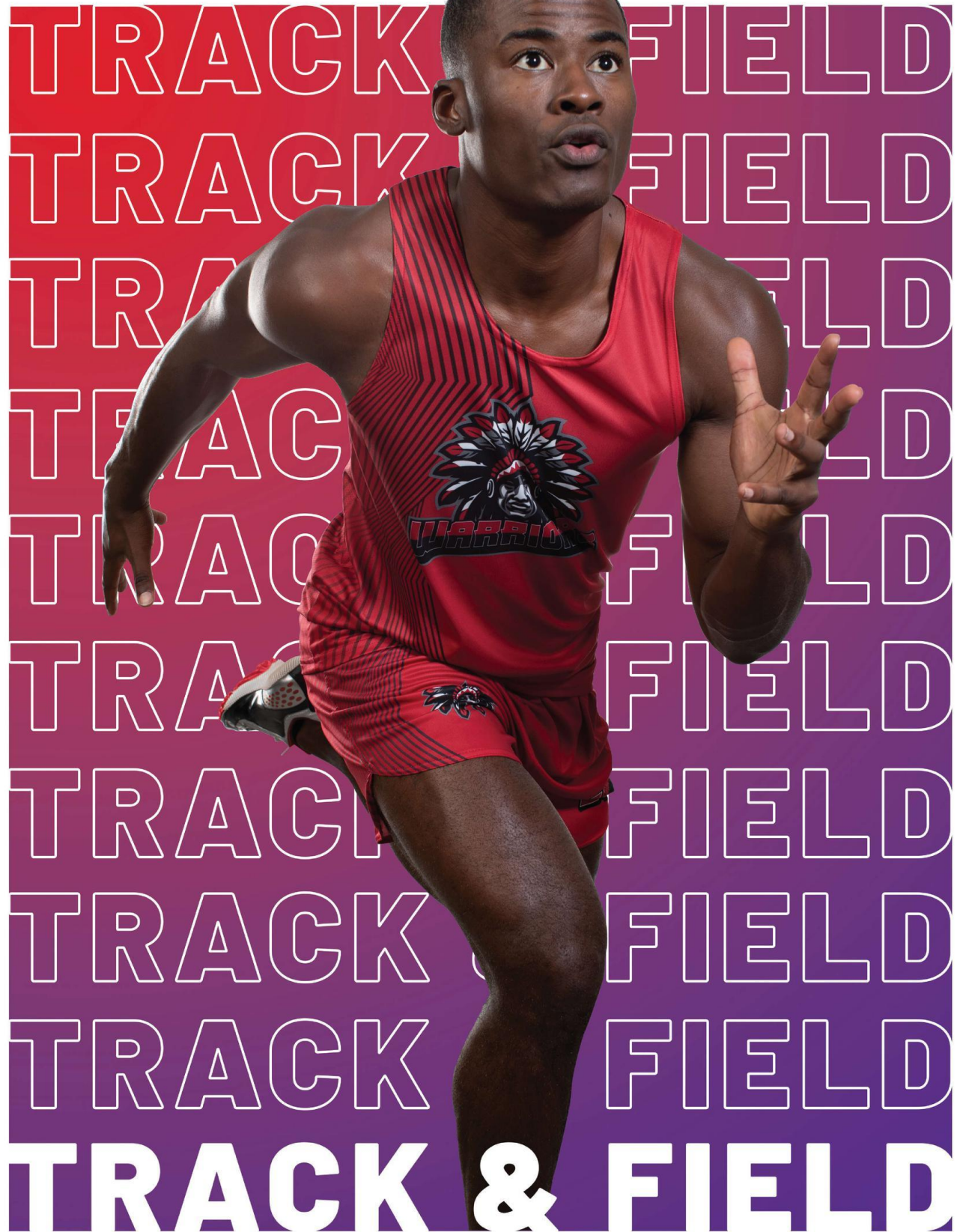


2023 - 2024



AT **ALL TEAM**
SPORTS



**FREESTYLE SUBLIMATED
FITTED TRACK JERSEY**

228192 Adult XS-3XL

- Dry-Excel™ 84% polyester/16% spandex knit
- Garment protects against the sun with 50+ UPF
- Flatlock stitching provides comfort and helps prevent chafing



Diagonal Color Block



Racer



Staggered Stripe



**FREESTYLE SUBLIMATED
FITTED TRACK SHORTS**

228193 Adult XS-3XL

- Dry-Excel™ 86% polyester/14% spandex knit
- Garment protects against the sun with 50+ UPF
- Covered elastic waistband with quickcord
- Flatlock stitching provides comfort and helps prevent chafing
- 9-inch inseam



**LADIES FREESTYLE SUBLIMATED
FITTED TRACK JERSEY**

228392 Ladies XS-2XL

- Dry-Excel™ 84% polyester/16% spandex knit
- Garment protects against the sun with 50+ UPF
- Flatlock stitching provides comfort and helps prevent chafing



Fleet



Diagonal Color Block



Staggered Stripe



**LADIES FREESTYLE SUBLIMATED
FITTED TRACK SHORTS**

228393 Ladies XS-2XL

- Dry-Excel™ 86% polyester/14% spandex knit
- Covered elastic waistband with quickcord
- Flatlock stitching provides comfort and helps prevent chafing
- 4-inch inseam



FREESTYLE SUBLIMATED TRADITIONAL TRACK JERSEY

228190 Adult XS-3XL
228290 Youth S-L

- Dry-Excel™ 100% polyester smooth wicking knit body
- 100% polyester wicking pinhole mesh back
- Garment protects against the sun with 15+ UPF



Racer



Staggered Stripe

Break Line



FREESTYLE SUBLIMATED TRADITIONAL TRACK SHORTS

228191 Adult XS-3XL
228291 Youth S-L

- Dry-Excel™ 100% polyester smooth wicking knit body
- Dry-Excel™ polyester brief liner
- Garment protects against the sun with 15+ UPF
- Covered elastic waistband with quickcord
- 5-inch inseam
- Youth inseam graded



LADIES FREESTYLE SUBLIMATED TRADITIONAL TRACK JERSEY

228390 Ladies XS-2XL

- Dry-Excel™ 100% polyester smooth wicking knit body
- 100% polyester wicking pinhole mesh back
- Garment protects against the sun with 15+ UPF



Diagonal Color Block



Staggered Stripe

Break Line



LADIES FREESTYLE SUBLIMATED TRADITIONAL TRACK SHORTS

228391 Ladies XS-2XL

- Dry-Excel™ 100% polyester smooth wicking knit body
- Dry-Excel™ polyester brief liner
- Garment protects against the sun with 15+ UPF
- Covered elastic waistband with quickcord
- 2 3/4-inch inseam



Racerback on Ladies



PR MAX COMPRESSION JERSEY

221037 Adult XS-2XL

221337 Ladies XS-2XL

- 84% polyester/16% spandex knit with color secure® technology that helps prevent dye migration
- 90% polyester/10% spandex wicking mesh side and back and side inserts with color secure® technology
- Ladies' fit on style 221337
- Tag-free label



BLACK/WHITE 420
 NAVY/WHITE 301
 PURPLE/WHITE 450
 ROYAL/WHITE 280
 SCARLET/WHITE 408
 WHITE/WHITE 230



PR MAX COMPRESSION SHORTS

221038 Adult XS-2XL

221338 Ladies XS-2XL

- Heavyweight 88% polyester/12% spandex knit with color secure® technology that helps prevent dye migration
- Ladies' fit on style 221338
- Tag-free label
- Covered elastic waistband (inside drawcord on Adult)
- Flatlock stitching provides comfort and helps prevent chafing
- 10-inch inseam (4-inch on Ladies)



BLACK 080
 NAVY 065
 PURPLE 050
 ROYAL 060
 SCARLET 083





2436



Racerback



LADIES CROSSOVER TANK

2436 Ladies S-2XL
2437 Girls S-L

- 84% polyester/16% spandex knit with color secure® technology that helps prevent dye migration
- 90% polyester/10% spandex wicking mesh inserts and yoke with color secure® technology
- Tag-free label



BLACK/
WHITE
420

DARK GREEN/
WHITE
438

GRAPHITE/
WHITE
R04

MAROON/
WHITE
380



NAVY/
WHITE
301

ROYAL/
WHITE
280

RED/
WHITE
400

WHITE/
WHITE
230

1232



LADIES DARE SHORTS

1232 Ladies S-2XL
1233 Girls S-L

- Heavyweight 88% polyester/12% spandex knit
- Tag-free label
- Low rise, wide flat waistband for secure fit and comfort
- No front seam
- U-shaped gusset
- Flatlock stitching provides comfort and helps prevent chafing
- 2 ½-inch inseam
- Girls inseam graded



BLACK
080

DARK GREEN
035

MAROON
045

NAVY
065

PURPLE
050

RED
040

ROYAL
060



Back
Insert
Mesh



PR MAX JERSEY

221035 Adult S-2XL

221335 Ladies XS-2XL

- Dry-Excel™ 100% polyester wicking smooth knit with color secure® technology that helps prevent dye migration
- Dry-Excel™ Micro-Interlock smooth 100% polyester mesh side and back
- Ladies' fit on style 221335
- Heat sealed label



BLACK/WHITE 420
 NAVY/WHITE 301
 PURPLE/WHITE 450
 ROYAL/WHITE 280
 SCARLET/WHITE 408
 WHITE/WHITE 230



221335



Modified Racerback
on Ladies



PR MAX SHORTS

221036 Adult S-2XL

221336 Ladies XS-2XL

- Dry-Excel™ 100% polyester wicking smooth knit with color secure® technology that helps prevent dye migration
- Coolmax™ polyester brief liner
- Ladies' fit on style 221336
- Tag-free label
- Covered elastic waistband with inside drawcord
- Matching inner brief with leg elastic
- Split side vent
- 3.5-inch inseam on Adult
- Youth inseam graded



BLACK 080
 NAVY 065
 PURPLE 050
 ROYAL 060
 SCARLET 083
 WHITE 005

221336

2.75-inch
Inseam



ACCELERATE JERSEY

352 Adult S-2XL

353 Youth S-L

354 Ladies XS-2XL

- 100% polyester wicking knit
- Tag-free label



BLACK/ WHITE 420	DARK GREEN/ WHITE 438	NAVY/ WHITE 301	RED/ WHITE 400	ROYAL/ WHITE 280	GOLD/ WHITE 245
------------------------	--------------------------------	-----------------------	----------------------	------------------------	-----------------------

Ladies Fit



NAVY/ GRAPHITE 321	MAROON/ WHITE 380	MAROON/ GRAPHITE D45	ORANGE/ WHITE 320	RED/ GRAPHITE 825
--------------------------	-------------------------	----------------------------	-------------------------	-------------------------

4-inch (Youth Inseam Graded)



ACCELERATE SHORTS

355 Adult S-2XL

356 Youth S-L

357 Ladies XS-2XL

- 100% polyester wicking knit
- Tag-free label
- Covered elastic waistband with inside drawcord
- Matching inner brief with leg elastic
- Side vents

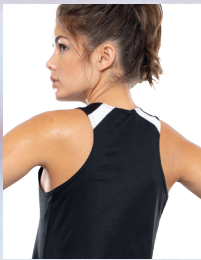


BLACK 080	KELLY 030	NAVY 065	ROYAL 060	RED 040
--------------	--------------	-------------	--------------	------------

Available in Ladies only	Available in Adult & Ladies only	Available in Adult & Youth only
--------------------------	----------------------------------	---------------------------------



GOLD 025	MAROON 045	ORANGE 029
-------------	---------------	---------------



Modified Racerback
on Ladies

343

355

357

348



OVERSPEED JERSEY

- 343** Adult S-3XL
- 344** Youth S-XL
- 348** Ladies XS-2XL

- 100% polyester wicking knit with color secure® technology that helps prevent dye migration
- Ladies' fit on style 348
- Tag-free label

Available in
[Adult & Youth]
only



BLACK/
WHITE
420

DARK GREEN/
WHITE
438

NAVY/
WHITE
301

ROYAL/
WHITE
280

SCARLET/
WHITE
408

WHITE/
BLACK
226



NEW CROSSTOWN JACKET

- 223530** Adult S-3XL
- 223630** Youth S-XL
- 223730** Ladies S-2XL

- Dry-Excel™ 100% polyester double-knit
- Dry-Excel™ 100% polyester mesh inserts
- Ladies' fit on style 223730
- Woven label
- Front zipper
- Set-in sleeves
- Front zippered pockets
- Open bottom
- Dropped tail hem



BLACK/BLACK 425 BLACK/WHITE 420 GRAPHITE/WHITE R04 NAVY/WHITE 301



ROYAL/WHITE 280 SCARLET/WHITE 408 WHITE/BLACK 226



NEW CROSSTOWN PANT

- 223531** Adult S-3XL
- 223631** Youth S-XL
- 223731** Ladies S-2XL

- Dry-Excel™ 100% polyester double-knit
- Dry-Excel 100% polyester mesh inserts
- Ladies' fit on style 222731
- Woven label
- Covered elastic waistband with inside drawcord
- Side seam pockets
- Tapered leg
- Zipper on outside lower leg



BLACK/BLACK 425 BLACK/WHITE 420 GRAPHITE/WHITE R04 NAVY/WHITE 301 ROYAL/WHITE 280 SCARLET/WHITE 408 WHITE/BLACK 226



223730

223731



223530

223531



Web handle at top of backpack

Convertible, mesh pouch stashes away when not in use. Fits volleyball, soccer or basketball



ALL SPORT BACKPACK

327890 12"W x 18.5"H x 7"D

- 100% polyester heavy denier
- Large main interior compartment
- Front zipper pocket with deep, interior pouch holds shoes or accessories



Without mesh ball holder

Reinforced, multi-use side pouch pockets with bat straps

Two mesh side pockets for water bottle with pass-thru for lacrosse stick or bat



BLACK/ GRAPHITE/ BLACK Q82 GRAPHITE/ GRAPHITE/ BLACK Q83 FOREST/ GRAPHITE/ BLACK Q88 MAROON/ GRAPHITE/ BLACK Q89 NAVY/ GRAPHITE/ BLACK Q93 ORANGE/ GRAPHITE/ BLACK Q90 PURPLE/ GRAPHITE/ BLACK Q91 ROYAL/ GRAPHITE/ BLACK Q84 SCARLET/ GRAPHITE/ BLACK Q86



Two mesh side pockets



RIPSTOP BACKPACK

1710 12.5"W x 18.25"H x 6"D

- 600-denier polyester with PVC coating
- 600-denier polyester ripstop front panels with double PU coating
- Zippered main compartment with covered zipper pulls
- Zippered front pocket with inside pen holders
- Interior cell phone holder and zippered pocket
- Handle at top of backpack
- Padded back for support and comfort
- Adjustable padded shoulder straps



BLACK/ BLACK 425 RED/ BLACK 407 ROYAL/ BLACK 289 NAVY/ BLACK 308 GOLD/ BLACK 244 PURPLE/ BLACK 496 DARK GREEN/ BLACK 444 GRAPHITE/ BLACK 172



TRI-COLOR DRAWSTRING BACKPACK

1920 14"W x 18"H

- 210-denier nylon with PU coating
- Hemmed top with drawcord closure
- Zippered front pocket
- Web tab at bottom corner for reinforcement



BLACK/ BLACK/ WHITE 529 RED/ BLACK/ WHITE 110 ROYAL/ BLACK/ WHITE 526 COLUMBIA BLUE/ BLACK/ WHITE 519 NAVY/ BLACK/ WHITE 311 GOLD/ BLACK/ WHITE 249 PURPLE/ BLACK/ WHITE 497 KELLY/ BLACK/ WHITE 616

Mini Chevron



Water Color
Camo



**FREESTYLE SUBLIMATED
HEADBAND WITH TIE**

228015 One Size

- Dry-Excel™ 84% polyester/16% spandex single-ply knit
- Adjustable lightweight head tie for a personalized fit
- 4" front, 1.5" back
- Sold in minimum packs of 12 pc per color



Spike



Marble



FREESTYLE SUBLIMATED HEADBAND

228016 One Size

- Dry-Excel™ 84% polyester/16% spandex single-ply knit
- 4" front, 1.5" back
- Sold in minimum packs of 12 pc per color

