

2023 - 2024



 **ALL TEAM**
SPORTS

228015



Cut Shot II



**FREESTYLE SUBLIMATED
VOLLEYBALL JERSEY**

341130 Adult S-3XL
341131 Youth S-XL

- 100% polyester smooth wicking knit body
- Tag-free label



Cut Shot II



**FREESTYLE SUBLIMATED
VOLLEYBALL SHORTS**

341160 Adult S-3XL
341161 Youth S-XL

- 100% polyester smooth wicking knit body
- Garment protects against the sun with 50+ UPF
- Tag-free label
- Covered elastic waistband with inside drawcord
- 6.5-inch inseam
- Youth inseam graded



Attack Block

Attack Block



NEW

LADIES FREESTYLE SUBLIMATED SLEEVELESS TANK

- 341114** Ladies XS-3XL
- 341115** Girls S-XL

- 84% polyester/16% spandex knit



Racerback



Tapeshot

228016



Back



LADIES FREESTYLE SUBLIMATED
TURBO LONG SLEEVE JERSEY

341122 Ladies S-2XL
341123 Girls S-XL

- 100% polyester interlock smooth knit
- Tag-free label
- Raglan sleeves



Double
Block



Spike



Double Block



LADIES FREESTYLE
SUBLIMATED LONG
SLEEVE STRETCH JERSEY

228359 Ladies S-3XL
228459 Girls S-XL

- 84% polyester/16% spandex knit
- Flatlock stitching provides comfort and helps prevent chafing
- Raglan sleeves

228359

Cross Play



345582



Spike



LADIES FREESTYLE
SUBLIMATED CAP
SLEEVE JERSEY

228358 Ladies S-3XL
228458 Girls S-XL

- 84% polyester/16% spandex knit
- Garment protects against the sun with 50+ UPF
- Flatlock stitching provides comfort and helps prevent chafing
- Raglan cap sleeves



Cut Shot



LADIES FREESTYLE
SUBLIMATED SHORT
SLEEVE JERSEY

341110 Ladies S-3XL
344110 Girls S-XL

- 84% polyester/16% spandex knit
- Garment protects against the sun with 50+ UPF
- Tag-free label
- Flatlock stitching provides comfort and helps prevent chafing
- Raglan sleeves



Back

345582



LADIES COURT JERSEY

342182 Ladies S-2XL
342183 Girls S-L

- Lightweight 90% polyester/ 10% spandex knit
- 92% polyester/ 8% spandex wicking pinhole mesh inserts
- Raglan sleeves
- Designed to conform to NFHS specifications for a contrasting jersey, when paired with a solid-compliant jersey for Libero contrast



BLACK/
WHITE
420

NAVY/
WHITE
301

RASPBERRY/
WHITE
514



SCARLET/
WHITE
408

Available in Ladies only



COLUMBIA
BLUE/
WHITE
293

MAROON/
WHITE
380

PURPLE/
WHITE
450



ROYAL/
WHITE
280

WHITE/
BLACK
226



LADIES TRUHIT TRI-COLOR
LONG SLEEVE JERSEY

342242 Ladies S-3XL
342243 Girls S-L

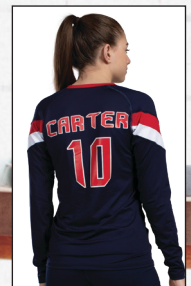
- 84% polyester/16% spandex knit with color secure® technology that helps prevent dye migration
- 90% polyester/10% spandex wicking mesh inserts with color secure® technology
- Tag-free label
- High Five logo on right chest
- Strategically placed seams for maximum mobility and comfort
- Raglan sleeves
- Designed to conform to NFHS specifications



345592



Wicking mesh insert



Back



BLACK/
GRAPHITE/
WHITE
489

DARK GREEN/
BLACK/
WHITE
520

ELECTRIC YELLOW/
BLACK/
WHITE
88N

GRAPHITE/
BLACK/
WHITE
195

MAROON/
BLACK/
WHITE
524

NAVY/
SCARLET/
WHITE
300

NAVY/
GRAPHITE/
WHITE
371



ORANGE/
BLACK/
WHITE
322

PURPLE/
BLACK/
WHITE
497

POWER BLUE/
BLACK/
WHITE
837

ROYAL/
BLACK/
WHITE
526

SCARLET/
BLACK/
WHITE
952

WHITE/
BLACK/
GRAPHITE
X26

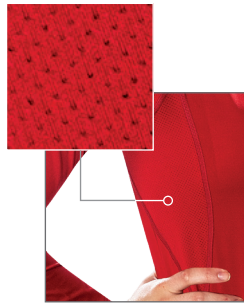


LADIES TRUHIT LONG SLEEVE JERSEY

342212 Ladies S-3XL

342213 Girls S-L

- 84% polyester/16% spandex knit with color secure® technology that helps prevent dye migration
- 90% polyester/10% spandex wicking mesh inserts with color secure® technology
- Tag-free label
- High Five logo on right chest
- Strategically placed seams for maximum mobility and comfort
- Raglan sleeves
- Designed to conform to NFHS specifications for a solid jersey



Wicking mesh insert



BLACK 080 SCARLET 083 MAROON 745 PURPLE 747 POWER PINK 809 POWER BLUE 812



WHITE 005 FOREST 038 GRAPHITE 059 ROYAL 060 NAVY 065



345592



LADIES MAVEN JERSEY

1322 Ladies XS-2XL

- 84% polyester/16% spandex knit
- Ultra tight fit
- Tag-free label
- Raglan sleeves
- Designed to conform to NFHS specifications for a solid jersey



ORANGE 029 BLACK 080 GRAPHITE 059 NAVY 065 PURPLE 050 POWER PINK 809



RED 040 ROYAL 060 WHITE 005



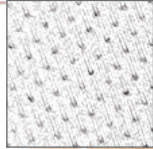
345592



LADIES TRUHIT TRI-COLOR
SHORT SLEEVE JERSEY

342252 Ladies S-3XL
342253 Girls S-L

- 84% polyester/16% spandex knit with color secure® technology that helps prevent dye migration
- 90% polyester/10% spandex wicking mesh inserts with color secure® technology
- Tag-free label
- High Five logo on right chest
- Strategically placed seams for maximum mobility and comfort
- Raglan sleeves
- Designed to conform to NFHS specifications



Wicking mesh insert



Back



345592



BLACK/
GRAPHITE/
WHITE
489

DARK GREEN/
BLACK/
WHITE
520

ELECTRIC YELLOW/
BLACK/
WHITE
88N

GRAPHITE/
BLACK/
WHITE
195

MAROON/
BLACK/
WHITE
524

NAVY/
SCARLET/
WHITE
300

NAVY/
GRAPHITE/
WHITE
371



ORANGE/
BLACK/
WHITE
322

PURPLE/
BLACK/
WHITE
497

POWER BLUE/
BLACK/
WHITE
837

ROYAL/
BLACK/
WHITE
526

SCARLET/
BLACK/
WHITE
952

WHITE/
BLACK/
GRAPHITE
X26



LADIES FULL FORCE SHORT SLEEVE JERSEY

1682 Ladies S-2XL

- 100% polyester propelit micromesh wicking knit
- Tag-free label
- Double layer V-neck collar
- Set-in sleeves



BLACK/
WHITE
420

NAVY/
WHITE
301

ROYAL/
WHITE
280

SCARLET/
WHITE
408

WHITE/
GRAPHITE
751



345582



LADIES BLASH JERSEY

1218 Ladies S-2XL

1219 Girls S-L

- 100% polyester wicking smooth knit
- Tag-free label
- Contrast color collar and princess seams
- Set-in cap sleeves



BLACK/
WHITE
420

WHITE/
BLACK
226

RED/
WHITE
400

ROYAL/
WHITE
280

NAVY/
WHITE
301

PURPLE/
WHITE
450



LIME/
WHITE
693

POWER
PINK/
WHITE
468

POWER
BLUE/
WHITE
834

POWER
ORANGE/
WHITE
Y60



POWER
YELLOW/
WHITE
327

Available in
[Ladies only]



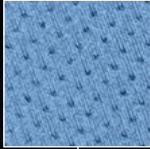


LADIES COLOR CROSS JERSEY

342232 Ladies S-3XL
342233 Girls S-L

- 100% polyester wicking knit with color secure® technology that helps prevent dye migration
- 92% polyester/8% spandex wicking pinhole mesh back and side insert with color secure® technology
- Tag-free label
- High Five logo on right chest
- Raglan sleeves

Wicking mesh
insert



Back



345582



BLACK/
WHITE
420

COLUMBIA BLUE/
WHITE
293

GRAPHITE/
WHITE
R04

NAVY/
WHITE
301

ROYAL/
WHITE
280

SCARLET/
WHITE
408

WHITE/
WHITE
230



Back



Wicking mesh insert

223846



345592



LADIES TRUHIT SHORT SLEEVE JERSEY

342222 Ladies S-3XL

342223 Girls S-L

- 84% polyester/16% spandex knit with color secure® technology that helps prevent dye migration
- 90% polyester/10% spandex wicking mesh inserts with color secure® technology
- Tag-free label
- High Five logo on right chest
- Strategically placed seams for maximum mobility and comfort
- Raglan sleeves
- Designed to conform to NFHS specifications for a solid jersey



BLACK
080

FOREST
038

GRAPHITE
059

MAROON
745



NAVY
065

POWER BLUE
812

POWER PINK
809

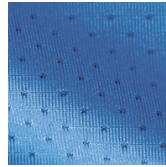
PURPLE
747



ROYAL
060

SCARLET
083

WHITE
005



Pinhole mesh



LADIES TORNADO JERSEY

1355 Ladies S-2XL
1356 Girls S-L

- 92% polyester/8% spandex wicking pinhole mesh
- Tag-free label



BLACK/ GOLD/ WHITE 418	COL. BLUE/ NAVY/ WHITE 614	LIME/ BLACK/ WHITE 680	NAVY/ GOLD/ WHITE 516	ORANGE/ BLACK/ WHITE 322	POWER PINK/ BLACK/ WHITE 456
---------------------------------	-------------------------------------	---------------------------------	--------------------------------	-----------------------------------	--



PURPLE/ GOLD/ WHITE 615	POWER YELLOW/ BLACK/ WHITE 458	RED/ BLACK/ WHITE 110	ROYAL/ RED/ WHITE 115	WHITE/ BLACK/ WHITE 132
----------------------------------	--	--------------------------------	--------------------------------	----------------------------------



LADIES CUTTER+ V-NECK JERSEY

6915 Ladies XS-2XL
6916 Girls S-L

- 96% polyester/4% spandex lightweight knit with color secure® technology that helps prevent dye migration
- Garment protects against the sun with 50+ UPF
- Tear away label
- Raglan sleeves



BLACK/ WHITE 420	COLLIERIA BLUE/ WHITE 293	DARK GREEN/ WHITE 438	GOLD/ WHITE 245	GRAPHITE/ WHITE R04
------------------------	------------------------------------	-----------------------------	-----------------------	---------------------------



LIME/ ROYAL 03W	MAROON/ WHITE 380	NAVY/ WHITE 301	ORANGE/ WHITE 320	PURPLE/ WHITE 450
-----------------------	-------------------------	-----------------------	-------------------------	-------------------------



ROYAL/ WHITE 280	SCARLET/ WHITE 408	TEAL/ WHITE 331	VEGAS GOLD/ WHITE 250	WHITE 005
------------------------	--------------------------	-----------------------	-----------------------------	--------------



WHITE/ BLACK 226	WHITE/ ROYAL 220	WHITE/ SCARLET 235
------------------------	------------------------	--------------------------



COORDINATING
 ADULT/YOUTH
6907 | 6908



3-inch Inseam (Girls inseam graded)



LADIES TRUHIT SHORTS

345592 Ladies S-3XL
345593 Girls S-L

- 88% polyester/12% spandex compression
- Tag-free label
- Low rise, wide flat no-dig waistband for secure fit and comfort
- Flatlock stitching provides comfort and helps prevent chafing
- Lined gusset



4-inch Inseam (Girls inseam graded)



LADIES KNOCK-OUT SHORTS

345582 Ladies XS-2XL
345583 Girls S-L

- Heavyweight 90% polyester/10% spandex knit
- Low rise, wide flat waistband for secure fit and comfort
- No front seam
- U-shaped gusset
- Flatlock stitching provides comfort and helps prevent chafing



3 1/2-inch Inseam



LADIES HYPERFORM FITTED SHORTS

2625 Ladies XS-2XL

- Heavyweight 88% polyester/12% spandex knit
- Tag-free label
- Low rise, soft brushed back exposed elastic waistband provides comfort
- No front seam
- U-shaped gusset
- Flatlock stitching provides comfort and helps prevent chafing



2 1/2-inch Inseam (Girls inseam graded)



LADIES DARE SHORTS

1232 Ladies S-2XL
1233 Girls S-L

- Heavyweight 88% polyester/12% spandex knit
- Tag-free label
- Low rise, wide flat waistband for secure fit and comfort
- No front seam
- U-shaped gusset
- Flatlock stitching provides comfort and helps prevent chafing
- Girls inseam graded





223747



222702

223730



223731

NEW

LADIES V-STREET FULL-ZIP JACKET

223747 Ladies S-2XL

- 100% polyester double-knit
- Woven label
- Front zipper
- Set-in sleeves
- Front pockets
- Dual inside pockets
- Striped rib-knit collar, cuffs and bottom band



NEW

LADIES CROSTOWN JACKET



223730 Ladies S-2XL

- Dry-Excel™ 100% polyester double-knit
- Dry-Excel™ 100% polyester mesh inserts
- Woven label
- Front zipper
- Set-in sleeves
- Front zippered pockets
- Open bottom



NEW

LADIES CROSTOWN PANT



223731 Ladies S-2XL

- Dry-Excel™ 100% polyester double-knit
- Dry-Excel™ 100% polyester mesh inserts
- Woven label
- Covered elastic waistband with inside drawcord
- Side seam pockets
- Tapered leg
- Zipper on outside lower leg





Thumbhole

223798

NEW

LADIES VENTURA SOFT KNIT HOODIE



222798 Ladies XS-2XL

- Solids, 89% recycled polyester/11% spandex
- Heathers, 45% recycled polyester/44% polyester/11% spandex
- Tag-free label
- 3-panel crossover hood
- Set-in sleeves with thumbholes for warmth
- Self-fabric cuffs and bottom band
- Side vents



BIRCH 907 BLACK 080 CHARCOAL HEATHER 083 DARK GREEN 035 GREY HEATHER 013 LAVENDER J63 MAROON 745



NAVY 065 OLIVE 039 ORCHID 47V ROYAL 060 SCARLET 083 STORM 932 TERRACOTTA J46



223799

NEW

LADIES VENTURA SOFT KNIT JOGGER



222799 Ladies XS-2XL

- Solids, 89% recycled polyester/11% spandex
- Heathers, 45% recycled polyester/44% polyester/11% spandex
- Tag-free label
- Covered elastic waistband with outside drawcord
- Front pockets with inner valuables pocket inside left pocket
- Back pocket with zipper
- Tapered leg



BLACK 080 CHARCOAL HEATHER E83 GREY HEATHER 013 NAVY 065 OLIVE 039 STORM 932



GEAR BAG

511 22"W x 11"H x 11"D

- 420-denier nylon with PVC coating
- Zippered main compartment has large U-shaped opening with two zipper pulls
- Zippered front pocket
- Separate zippered compartments at each end
- Web handles with self-fabric handle wrapper, reinforced at stress points
- Adjustable and detachable shoulder strap
- Piping trim for durability
- Removable inside bottom board



BLACK
080

RED
040

NAVY
065

PURPLE
050

FOREST
GREEN
034



SMALL GEAR BAG

417 20"W x 10"H x 10"D

- 600-denier polyester with PVC coating
- Zippered main compartment has large U-shaped opening with two zipper pulls
- Separate zippered compartments at each end
- Zippered front pocket
- Matching web handles with self-fabric handle wrapper, reinforced at stress points
- Adjustable and detachable matching shoulder strap with rubber shoulder guard
- Self-fabric piping for added durability
- Removable inside bottom board



BLACK
080

RED
040

ROYAL
060

NAVY
065

DARK
GREEN
035

PURPLE
050



UNITED BACKPACK

NEW

327930 11.5"W x 19"H x 9.5"D

- 600-denier polyester with PVC coating
- 210-denier nylon with PVC coating
- Large main interior compartment with two corded zipper pulls
- Large front ventilated compartment with two corded zipper pulls
- Zippered pocket with brushed interior for valuables
- Two mesh side pockets
- Adjustable buckles on sides to secure baseball bat
- Internal zippered mesh valuables pocket
- Key clip inside main compartment
- Padded back for support and comfort
- Web handle at top of backpack
- Adjustable padded shoulder straps



BLACK
080

GRAPHITE/
BLACK
172

NAVY/
BLACK
308



Front pocket with corded zipper pull with hidden inside mesh ball holder that fits volleyball, soccer ball, or basketball



Web handle at top of backpack

Convertible, mesh pouch stashes away when not in use. Fits volleyball, soccer or basketball



Reinforced, multi-use side pouch pockets with bat straps

Two mesh side pockets for water bottle with pass-thru for lacrosse stick or bat



ALL SPORT BACKPACK

327890 12"W x 18.5"H x 7"D

- 100% polyester heavy denier
- Large main interior compartment
- Front zipper pocket with deep, interior pouch holds shoes or accessories



Without mesh ball holder



BLACK/ GRAPHITE/ BLACK Q52	GRAPHITE/ GRAPHITE/ BLACK Q83	FOREST/ GRAPHITE/ BLACK Q88	MAROON/ GRAPHITE/ BLACK Q89	NAVY/ GRAPHITE/ BLACK Q93	ORANGE/ GRAPHITE/ BLACK Q90	PURPLE/ GRAPHITE/ BLACK Q91	ROYAL/ GRAPHITE/ BLACK Q84	SCARLET/ GRAPHITE/ BLACK Q86
-------------------------------------	--	--------------------------------------	--------------------------------------	------------------------------------	--------------------------------------	--------------------------------------	-------------------------------------	---------------------------------------

Web handle at top of backpack

Two zippered side compartments with mesh panels



Mesh paneled zippered interior ball compartment

Mesh ball holder fits volleyball, soccer or basketballs



PLAYER BACKPACK

327850 18"W x 17"H x 9"D

- Heavy duty 600-denier polyester with soft PVC backing
- Adjustable padded shoulder straps



ATHLETIC GOLD/ BLACK/ WHITE 657	BLACK/ BLACK/ WHITE 420	FOREST/ BLACK/ WHITE 148	GRAPHITE/ BLACK/ WHITE U73	MAROON/ BLACK/ WHITE 524	NAVY/ BLACK/ WHITE 311	ORANGE/ BLACK/ WHITE 322	PURPLE/ BLACK/ WHITE 497	ROYAL/ BLACK/ WHITE 526	SCARLET/ BLACK/ WHITE 952
---	----------------------------------	-----------------------------------	-------------------------------------	-----------------------------------	---------------------------------	-----------------------------------	-----------------------------------	----------------------------------	------------------------------------



TRI-COLOR DRAWSTRING BACKPACK

1920 14"W x 18"H

- 210-denier nylon with PU coating
- Hemmed top with drawcord closure
- Zippered front pocket
- Web tab at bottom corner for reinforcement



BLACK/ BLACK/ WHITE 529	RED/ BLACK/ WHITE 110	ROYAL/ BLACK/ WHITE 526	COLUMBIA BLUE/ BLACK/ WHITE 519	NAVY/ BLACK/ WHITE 311	GOLD/ BLACK/ WHITE 249	PURPLE/ BLACK/ WHITE 497	KELLY/ BLACK/ WHITE 616
----------------------------------	--------------------------------	----------------------------------	---	---------------------------------	---------------------------------	-----------------------------------	----------------------------------



Gradient



**FREESTYLE SUBLIMATED
COMPRESSION SLEEVE**

228199 Adult S/M-L/XL
228299 Youth OS

- Dry-Excel™ performance blended yarns are 75% acrylic/15% polyester/4% spandex/4% elastic/2% nylon
- Garment protects against the sun with 50+ UPF
- Ultra tight fit
- Flatlock stitching provides comfort and helps prevent chafing



ELITE MULTI-SPORT SOCK

6006 Large [10-13]
Medium [9-11]
Small [7-9]

- 75% acrylic/15% polyester/4% spandex/4% elastic/2% nylon
- Knee length
- Lightweight microfiber yarns offer support while remaining soft to the touch



COLOR BLOCK CREW SOCK

6091 Xlarge [13-15]
Large [10-13]
Medium [9-11]
Small [7-9]

- 55% polyester/22% nylon/20% cotton/3% spandex wicking yarn
- Calf length
- Extra cushioning and support in areas of the foot and ankle that are susceptible to rubbing, impact or injury
- Left and right sock construction for a better fit
- Arch compression reduces fatigue and aids circulation

