



ALL TEAM
SPORTS

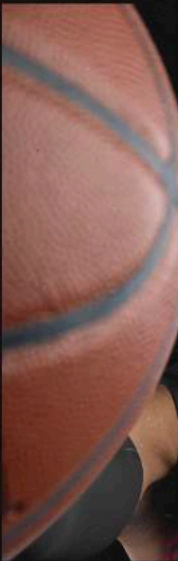


LOOK YOUR BEST. PLAY YOUR BEST.

Full court grind is **24/7/365.**

From the downtown playground
to the high school gym, this is
where your dream starts.

Embrace the grind and
see where it takes you.





LINE-UP

FreeStyle Sublimation Uniforms	7
Ladies FreeStyle Sublimation Uniforms	19
Stock Uniforms	33
Ladies Stock Uniforms	43
FreeStyle Sublimation Warm-Ups	49
Stock Warm-Ups	53
Training	63
Coaches	70
Bags	73



PAINT THE COURT IN YOUR STYLE

Elevate Your Game with Custom Sublimated Basketball Uniforms Featuring Unmatched Designs, Colors & Fit!

DESIGN:
FAST
BREAK



FreeStyle IT!

5 Easy Steps from Start to Finish with Fast 3D Rendering!



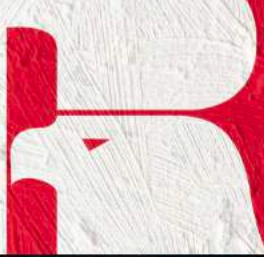
**RUSSELL
ATHLETIC**



BEYOND BOUNDARIES

Russell Athletic® is proud to offer a diverse range of basketball uniforms and designs that combine tradition with innovation and cater to every player's unique style.





**RUSSELL
ATHLETIC**



REVERSIBLE



**FREESTYLE SUBLIMATED
 DYNASPEED REVERSIBLE JERSEY**

B10BNA Adult
 S-4XL

B10BNU Youth
 S-XL

- 100% polyester body, 91% polyester/9% spandex binding
- Dri-Power® Moisture Wicking Technology

**FREESTYLE SUBLIMATED
 DYNASPEED REVERSIBLE SHORTS**

B12BNB Adult
 S-4XL
 10" inseam

B22BNB Adult
 S-4XL
 Slim 8" inseam

NEW **B26BNB** Adult
 S-3XL
 6" inseam

B12BNU Youth
 S-XL
 7" inseam

B22BNU Youth
 S-XL
 Slim inseam graded

NEW **B26BNU** Youth
 S-XL
 5" inseam

- 100% polyester
- Dri-Power® Moisture Wicking Technology
- Covered elastic waistband with inside drawcord

**FREESTYLE SUBLIMATED
 DYNASPEED SOLID SHORTS**

B10BNB Adult
 S-4XL
 10" inseam

B20BNB Adult
 S-4XL
 Slim 8" inseam

- 100% polyester
- Dri-Power® Moisture Wicking Technology
- Covered elastic waistband with inside drawcord

DESIGN:
 CAMERON
 CLASSIC



REVERSIBLE



DESIGN:
SKYLINE



**FREESTYLE SUBLIMATED
REVERSIBLE JERSEY**

228118 Adult
S-3XL

228218 Youth
S-XL

- Dry-Excel™ 100% polyester single ply reversible closed hole mesh
- Tear away label



**FREESTYLE SUBLIMATED
REVERSIBLE SHORTS**

228119 Adult
S-3XL
9" inseam

228122 Adult
S-3XL
8" inseam

NEW **228123** Adult
S-3XL
6" inseam

228219 Youth
S-XL
8" inseam

228222 Youth
S-XL
7" inseam

NEW **228223** Youth
XS-XL
5" inseam

- Dry-Excel™ 100% polyester single ply reversible closed hole mesh
- Tear away label
- Covered elastic waistband with inside drawcord
- Youth inseam graded



RUSSELL ATHLETIC

FREESTYLE SUBLIMATED DYNASPEED JERSEY

4B3VTA Adult
S-4XL

- 92% polyester/8% spandex engineered with ventilated stretch mesh
- Dri-Power® Moisture Wicking Technology

FREESTYLE SUBLIMATED DYNASPEED SHORTS

4B3VTB Adult
S-4XL
10" inseam

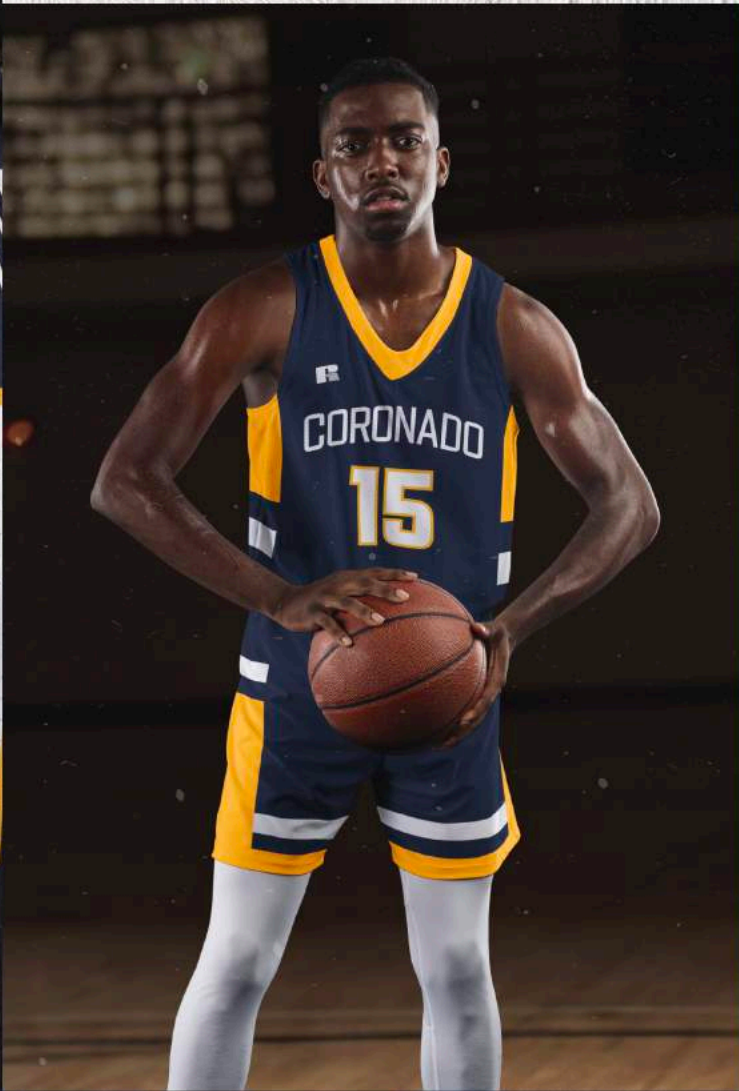
4R3VTB Adult
S-4XL
Slim 8" inseam

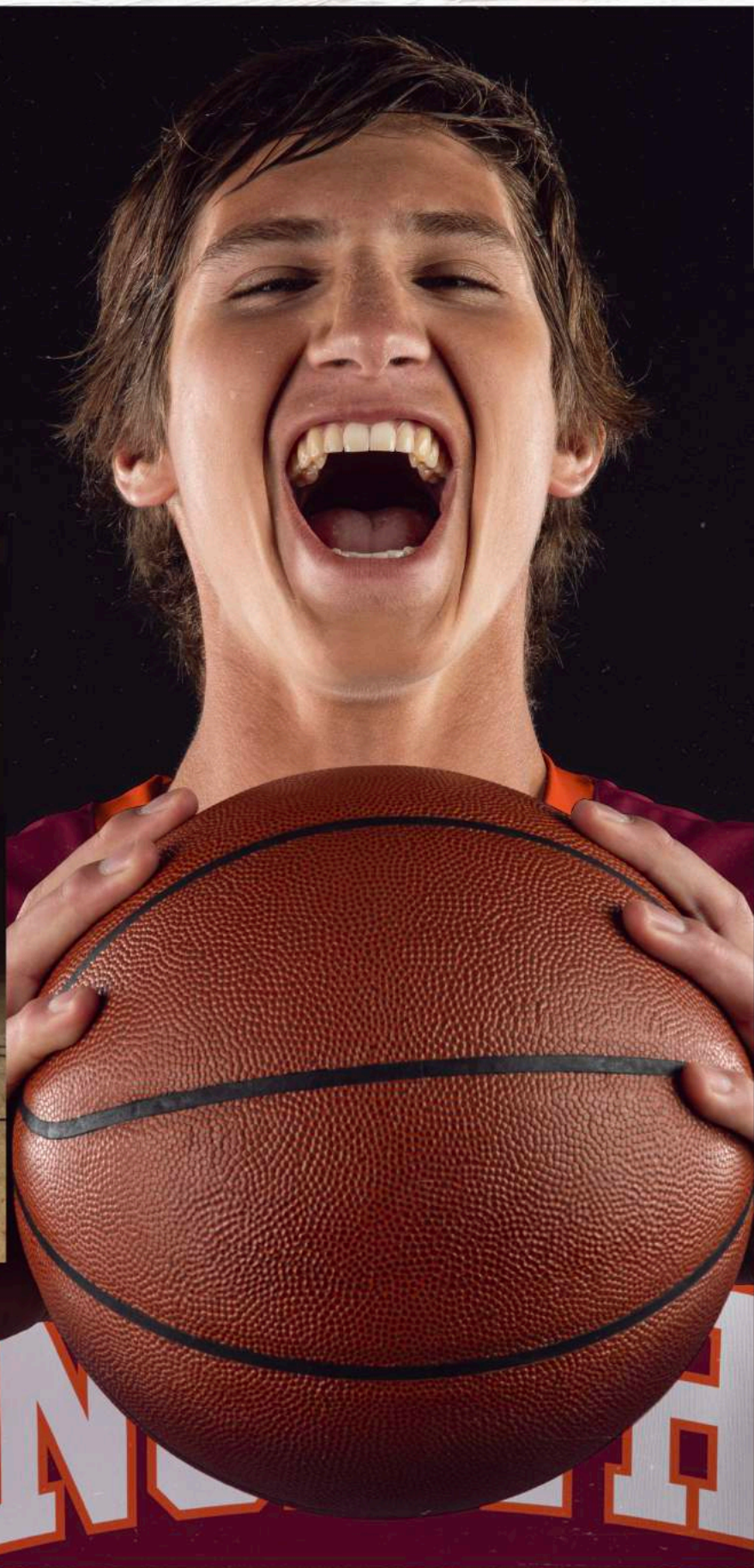
NEW **4R6VTB** Adult
S-3XL
6" inseam

- 92% polyester/8% spandex engineered with ventilated stretch mesh
- Dri-Power® Moisture Wicking Technology
- Covered elastic waistband with internal drawcord



DESIGN:
DOMINANT







**FREESTYLE SUBLIMATED
4-WAY STRETCH JERSEY**

228113 Adult
S-3XL

228213 Youth
S-XL

- Dry-Excel™ Sof-Stretch™ Lightweight
90% polyester/10% spandex knit



**FREESTYLE SUBLIMATED
4-WAY STRETCH SHORTS**

228121 Adult
S-3XL
8" inseam

228221 Youth
S-XL
7" inseam

- Dry-Excel™ Sof-Stretch™ Lightweight
90% polyester/10% spandex knit
- Gripper elastic waistband with quick cord
- Youth inseam graded

**DESIGN:
ARGYLE**





DESIGN:
DIGITAL
WAVE



**FREESTYLE SUBLIMATED TURBO
LIGHTWEIGHT JERSEY**

228110 Adult
S-3XL

228210 Youth
S-XL

- Dry-Excel™ 100% polyester interlock smooth knit



**FREESTYLE SUBLIMATED
LIGHTWEIGHT SHORTS**

228111 Adult
S-3XL **TURBO**
10" inseam

228120 Adult
S-3XL **TURBO**
8" inseam

NEW **228124** Adult
S-3XL
6" inseam

228211 Youth
S-XL **TURBO**
9" inseam

228220 Youth
S-XL **TURBO**
7" inseam

NEW **228224** Youth
XS-XL
5" inseam

- Dry-Excel™ 100% polyester interlock smooth knit
- Gripper elastic waistband with quickcord
- Youth inseam graded

DESIGN:
DOMINANT



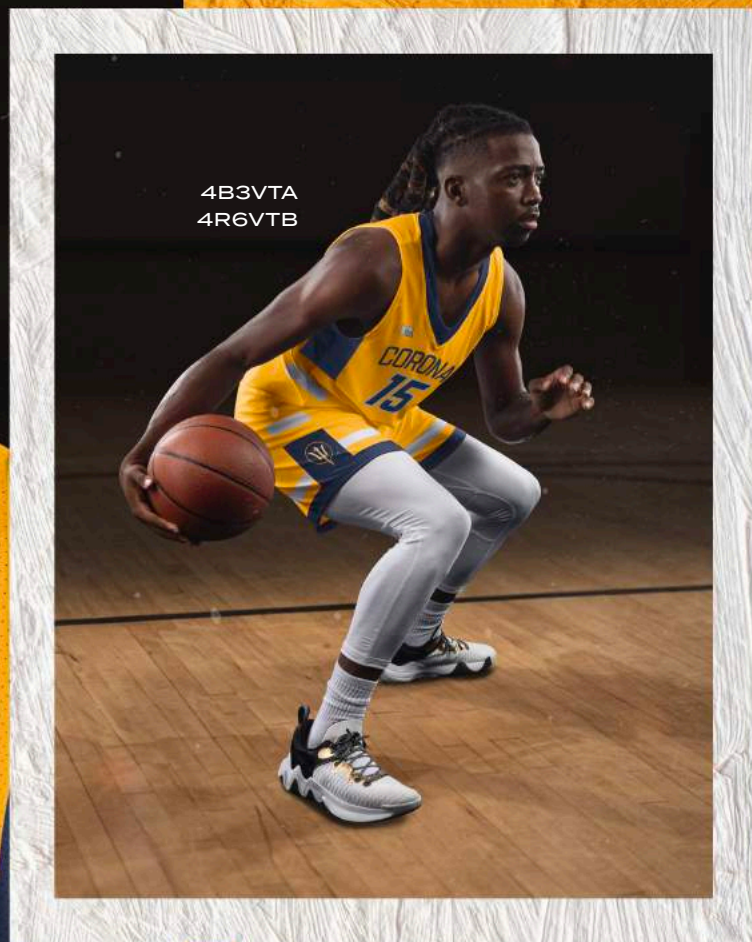
**FREESTYLE SUBLIMATED
TURBO SHOOTER SHIRT**

55152S Adult
S-3XL

- 91% polyester/9% spandex engineered with lightweight, breathable stretch fabric for comfort and mobility
- Garment protects against the sun with 15+ UPF
- Dri-Power® Moisture Wicking Technology
- Athletic cut with tapered sleeves
- Tagless label

**RUSSELL
ATHLETIC**

DESIGN:
DOMINANT





REVERSIBLE



DESIGN:
CAMERON
CLASSIC

**LADIES FREESTYLE SUBLIMATED
DYNASPEED REVERSIBLE JERSEY**

B11BNA Ladies
S-3XL

- 100% polyester body, 91% polyester/9% spandex binding
- Dri-Power® Moisture Wicking Technology

**LADIES FREESTYLE SUBLIMATED
DYNASPEED REVERSIBLE SHORTS**

B12BNX Ladies
S-3XL
8.5" inseam

B22BNX Ladies
S-3XL
Slim 7" inseam

NEW B26BNX Ladies
S-3XL
6" inseam

- 100% polyester
- Dri-Power® Moisture Wicking Technology
- Covered elastic waistband with inside drawcord

**LADIES FREESTYLE SUBLIMATED
DYNASPEED SOLID SHORTS**

B11BNB Ladies
S-3XL
8.5" inseam

B21BNB Ladies
S-3XL
Slim 7" inseam

- 100% polyester
- Dri-Power® Moisture Wicking Technology
- Covered elastic waistband with inside drawcord



REVERSIBLE



DESIGN:
SKYLINE



**LADIES FREESTYLE
SUBLIMATED
REVERSIBLE JERSEY**

228318 Ladies
XS-2XL

- Dry-Excel™ 100% polyester single ply reversible closed hole mesh
- Tear away label



**LADIES FREESTYLE
SUBLIMATED
REVERSIBLE SHORTS**

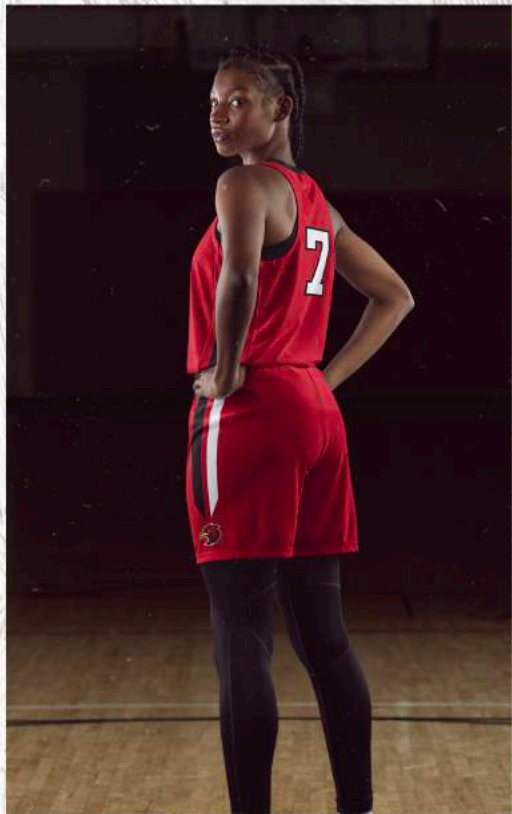
228319 Ladies
XS-2XL
8" inseam

228322 Ladies
XS-2XL
7" inseam

NEW **228323** Ladies
XS-2XL
6" inseam

- Dry-Excel™ 100% polyester single ply reversible closed hole mesh
- Tear away label
- Covered elastic waistband with inside drawcord





**RUSSELL
ATHLETIC**

DESIGN:
TITLE
SHOT

**LADIES FREESTYLE
SUBLIMATED
DYNASPEED JERSEY**

7B3VTA Ladies
S-3XL

- 92% polyester/8% spandex engineered with ventilated stretch mesh
- Dri-Power® Moisture Wicking Technology

**LADIES FREESTYLE
SUBLIMATED
DYNASPEED SHORTS**

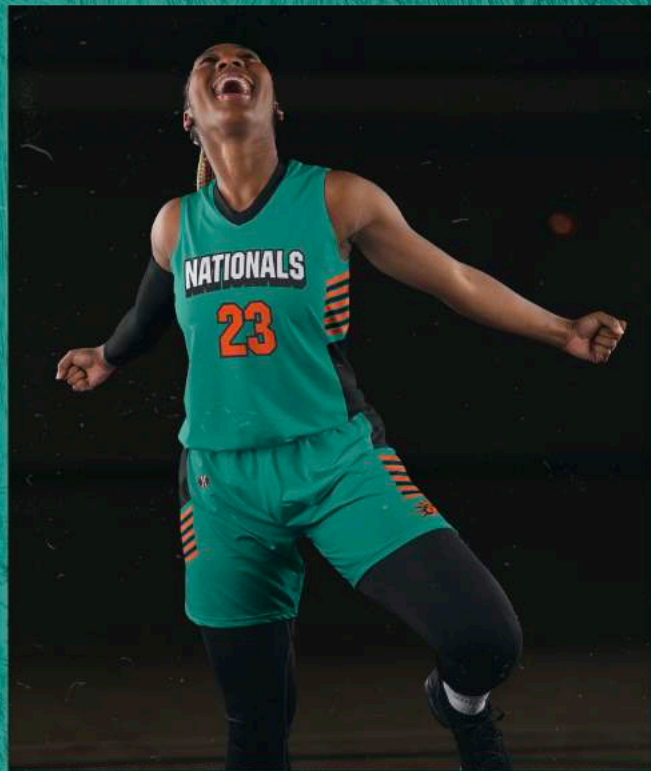
7B3VTB Ladies
S-3XL
8.5" inseam

7R3VTB Ladies
S-3XL
Slim 7" inseam

NEW 7R6VTB Ladies
S-3XL
6" inseam

- 92% polyester/8% spandex engineered with ventilated stretch mesh
- Dri-Power® Moisture Wicking Technology
- Covered elastic waistband with internal drawcord







**LADIES FREESTYLE
SUBLIMATED
4-WAY STRETCH JERSEY**

228315 Ladies
XS-2XL

- Dry-Excel™ Sof-Stretch™ Lightweight
90% polyester/10% spandex knit



**LADIES FREESTYLE
SUBLIMATED
4-WAY STRETCH SHORTS**

228314 Ladies
XS-2XL
8" inseam

228321 Ladies
XS-2XL
7" inseam

- Dry-Excel™ Sof-Stretch™ Lightweight
90% polyester/10% spandex knit
- Gripper elastic waistband with quick cord

**DESIGN:
PARAMOUNT**





DESIGN:
FALL AWAY



**LADIES FREESTYLE
SUBLIMATED 4-WAY STRETCH
RACERBACK JERSEY**

228313 Ladies
XS-2XL

- Dry-Excel™ Sof-Stretch™ Lightweight
90% polyester/10% spandex knit
- * Racerback styling



**LADIES FREESTYLE
SUBLIMATED
4-WAY STRETCH SHORTS**

228314 Ladies
XS-2XL
8" inseam

228321 Ladies
XS-2XL
7" inseam

- Dry-Excel™ Sof-Stretch™ Lightweight
90% polyester/10% spandex knit
- Gripper elastic waistband with quick cord







**LADIES FREESTYLE
SUBLIMATED
TURBO JERSEY**

228316 Ladies
XS-2XL

- Dry-Excel™ 100% polyester smooth wicking knit body
- 100% polyester pinhole mesh back



**LADIES FREESTYLE
SUBLIMATED TURBO LIGHTWEIGHT
RACERBACK JERSEY**

228310 Ladies
XS-2XL

- Dry-Excel™ 100% polyester interlock smooth knit
- Racerback styling



**LADIES FREESTYLE
SUBLIMATED
LIGHTWEIGHT SHORTS**

228311 Ladies
XS-2XL
8" inseam

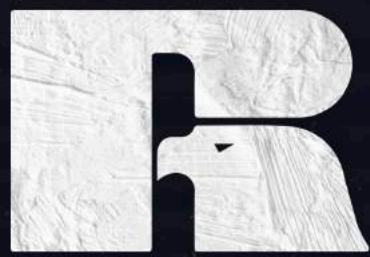
228320 Ladies
XS-2XL
7" inseam

NEW **228324** Ladies
XS-3XL
6" inseam

- Dry-Excel™ 100% polyester wicking smooth knit
- Gripper elastic waistband with quickcord

DESIGN:
DIGITAL
WAVE

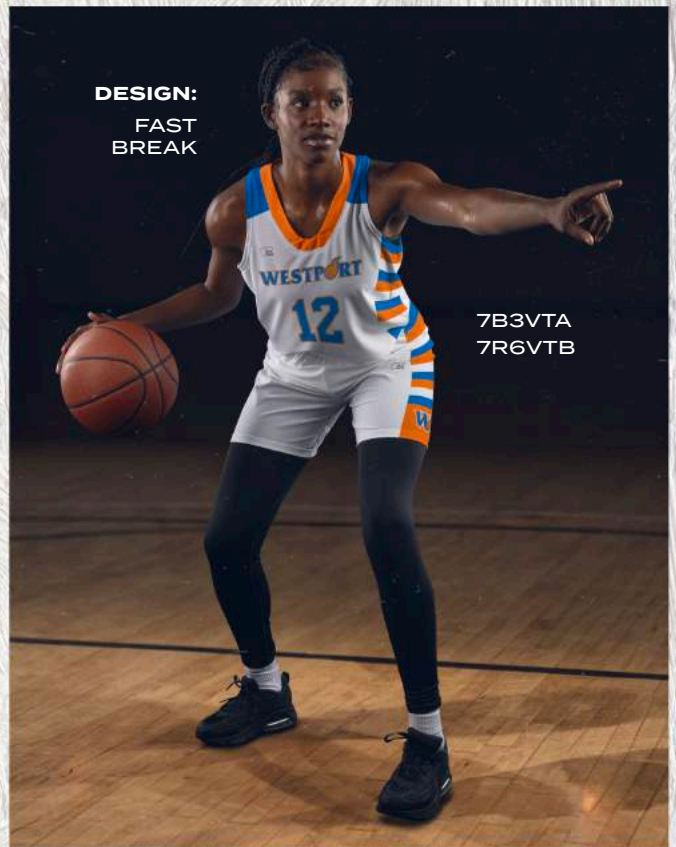




**RUSSELL
ATHLETIC**



DESIGN:
FAST
BREAK



7B3VTA
7R6VTB



**LADIES FREESTYLE
SUBLIMATED TURBO
SHOOTER SHIRT**

551S2X Ladies
S-3XL

- 91% polyester/9% spandex engineered with lightweight, breathable stretch fabric for comfort and mobility
- Garment protects against the sun with 15+ UPF
- Dri-Power® Moisture Wicking Technology
- Athletic cut with tapered sleeves
- Tagless label

DESIGN:
MARDI
GRAS





REVERSIBLE





SWISH



**SWISH
REVERSIBLE JERSEY**

6927 Adult

S-2XL

6928 Youth

S-L

- Two layers of 100% polyester wicking knit with color secure® technology that helps prevent dye migration
- Outside locker label
- Fully reversible
- Each layer hemmed separately for easy embellishment



**SWISH
REVERSIBLE SHORTS**

6929 Adult

S-2XL

6930 Youth

S-L

- Two layers of 100% polyester wicking knit with color secure® technology that helps prevent dye migration
- Tear away label
- Covered elastic waistband with inside drawcord
- Fully reversible
- 6.5-inch inseam
- Youth inseam graded



BLACK/
WHITE
420

COL BLUE/
WHITE
293

DK GREEN/
WHITE
438

GRAPHITE/
WHITE
R04



MAROON/
WHITE
380

NAVY/
WHITE
301

ORANGE/
WHITE
320

PURPLE/
WHITE
450



ROYAL/
WHITE
280

SCARLET/
WHITE
408





COORDINATING LADIES
6888 pg. 43



MATCH-UP JERSEY

6886 Adult
 S-3XL

6887 Youth
 S-XL

- 100% polyester wicking knit with color secure® technology that helps prevent dye migration
- Tagless label
- Outside locker label
- Designed to be NFHS compliant



MATCH-UP SHORTS

6889 Adult
 S-3XL

6890 Youth
 S-XL

- 100% polyester wicking knit with color secure® technology that helps prevent dye migration
- Tagless label
- Covered elastic waistband with inside drawcord
- Side vent
- 6.5-inch inseam
- Youth inseam graded
- Designed to be NFHS compliant



BLACK/
 WHITE
 420

COLUMBIA
 BLUE/
 WHITE
 293

DK GREEN/
 WHITE
 438

GOLD/
 WHITE
 245



GRAPHITE/
 WHITE
 R04

MAROON/
 WHITE
 380

NAVY/
 WHITE
 301

ORANGE/
 WHITE
 320



PURPLE/
 WHITE
 450

ROYAL/
 WHITE
 280

SCARLET/
 WHITE
 408

WHITE/
 GRAPHITE
 V751



STEP-BACK





COORDINATING LADIES

1732 pg. 45



STEP-BACK JERSEY

1730 Adult

S-3XL

1731 Youth

S-XL

- 100% polyester wicking knit with color secure® technology that helps prevent dye migration
- Updated tailored fit
- Tagless label
- Outside locker label
- Designed to be NFHS Compliant



STEP-BACK SHORTS

1733 Adult

S-3XL

1734 Youth

S-XL

- 100% polyester wicking knit with color secure® technology that helps prevent dye migration
- Updated tailored fit
- Tagless label
- Covered elastic waistband with inside drawcord
- 8-inch inseam
- Youth inseam graded
- Designed to be NFHS Compliant

BLACK/ WHITE 420	COLUMBIA BLUE/ WHITE 293	DARK GREEN/ WHITE 438	GOLD/ WHITE 245
GRAPHITE/ WHITE R04	MAROON/ WHITE 380	NAVY/ WHITE 301	ORANGE/ WHITE 320
PURPLE/ WHITE 450	ROYAL/ WHITE 280	RED/ WHITE 400	WHITE/ BLACK 226
WHITE/ NAVY 221	WHITE/ RED 225	WHITE/ ROYAL 220	WHITE/ SILVER E64



RETRO

COORDINATING LADIES
224376 | 224377 pg. 47



RETRO JERSEY

224076 Adult
S-3XL

224276 Youth
S-XL

- Dry-Excel™ 100% polyester wicking smooth knit with color secure® technology that helps prevent dye migration
- Dry-Excel™ Micro-Interlock smooth 100% polyester knit inserts
- Updated tailored fit
- Tagless label
- Outside locker label
- Modified V-neck collar
- Designed to be NFHS Compliant



RETRO SHORTS

224077 Adult
S-3XL

224277 Youth
S-XL

- Dry-Excel™ 100% polyester wicking smooth knit with color secure® technology that helps prevent dye migration
- Updated tailored fit
- Tagless label
- Covered elastic waistband with inside drawcord
- Side vent
- Back yoke
- 8-inch inseam
- Youth inseam graded
- Designed to be NFHS Compliant



BLACK/
LIGHT GOLD/
WHITE
R21

BLACK/
ORANGE/
WHITE
611

BLACK/
WHITE
420

FOREST/
WHITE
436



GRAPHITE/
WHITE
R04

MAROON/
WHITE
380

NAVY/
SCARLET/
WHITE
300

NAVY/
WHITE
301



ROYAL/
WHITE
280

SCARLET/
WHITE
408

WHITE/
BLACK
226

WHITE/
FOREST
223



WHITE/
MAROON
224

WHITE/
NAVY
221

WHITE/
ROYAL
220

WHITE/
SCARLET
235





TIP-OFF

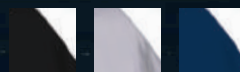




TIP-OFF SHOOTER SHIRT

1728 Adult
S-3XL

- 100% polyester wicking knit with color secure® technology that helps prevent dye migration
- 92% polyester/8% spandex wicking pinhole mesh sleeve insert and back yoke with color secure® technology
- Tagless label
- Set-in sleeves



BLACK/
WHITE
420

GRAPHITE/
WHITE
R04

NAVY/
WHITE
301



ROYAL/
WHITE
280

SCARLET/
WHITE
408



MATCH-UP



COORDINATING ADULT | YOUTH
6886 | 6887 | 6889 | 6890 pg. 35



LADIES MATCH-UP JERSEY

6888 Ladies
XS-2XL

- 100% polyester wicking knit with color secure® technology that helps prevent dye migration
- Tagless label
- Outside locker label
- V-neck collar
- Designed to be NFHS compliant



6889
pg. 35



STEP-BACK



COORDINATING ADULT | YOUTH
 1730 | 1731 | 1733 | 1734 pg. 37



LADIES STEP-BACK JERSEY

1732 Ladies
 XS-2XL

- 100% polyester wicking knit with color secure® technology that helps prevent dye migration
- Updated tailored fit
- Tagless label
- Outside locker label
- Racerback styling
- Designed to be NFHS compliant

BLACK/ WHITE 420	COLUMBIA BLUE/ WHITE 293	DARK GREEN/ WHITE 438	GOLD/ WHITE 245
GRAPHITE/ WHITE R04	MAROON/ WHITE 380	NAVY/ WHITE 301	ORANGE/ WHITE 320
PURPLE/ WHITE 450	ROYAL/ WHITE 280	RED/ WHITE 400	WHITE/ BLACK 226
WHITE/ NAVY 221	WHITE/ RED 225	WHITE/ ROYAL 220	WHITE/ SILVER E64

1734
 pg. 37







COORDINATING ADULT | YOUTH
224076 | 224276 |
224077 | 224277 pg. 38



LADIES RETRO JERSEY

224376 Ladies
 XS-2XL

- Dry-Excel™ 100% polyester wicking smooth knit with color secure® technology that helps prevent dye migration
- Dry-Excel™ Micro-Interlock smooth 100% polyester knit inserts
- Updated tailored fit
- Tagless label
- Outside locker label
- Modified V-neck collar
- Designed to be NFHS compliant



LADIES RETRO SHORTS

224377 Ladies
 XS-2XL

- Dry-Excel™ 100% polyester wicking smooth knit with color secure® technology that helps prevent dye migration
- Updated tailored fit
- Tagless label
- Covered elastic waistband with inside drawcord
- Side vent
- Back yoke
- 7-inch inseam
- Designed to be NFHS compliant

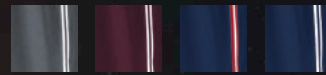


BLACK/
LIGHT GOLD/
WHITE
R21

BLACK/
ORANGE/
WHITE
611

BLACK/
WHITE
420

FOREST/
WHITE
436



GRAPHITE/
WHITE
R04

MAROON/
WHITE
380

NAVY/
SCARLET/
WHITE
300

NAVY/
WHITE
301



ROYAL/
WHITE
280

SCARLET/
WHITE
408

WHITE/
BLACK
226

WHITE/
FOREST
223



WHITE/
MAROON
224

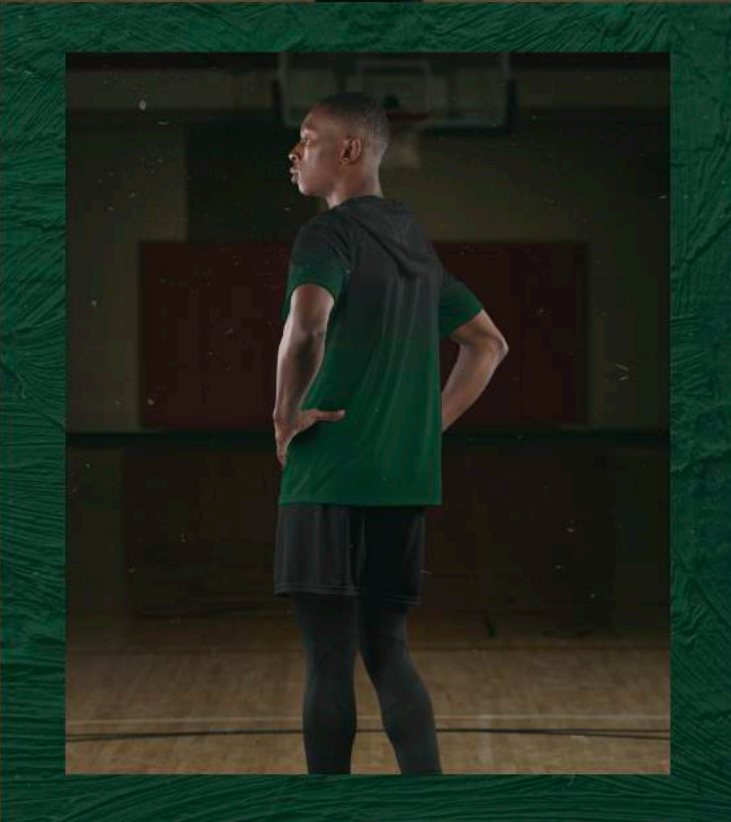
WHITE/
NAVY
221

WHITE/
ROYAL
220

WHITE/
SCARLET
235



DESIGN:
GRADIENT



DESIGN:
BLOCK
STRIPE



**FREESTYLE SUBLIMATED
COTTON-TOUCH POLY
SHORT SLEEVE HOODIE**

228175 Adult
S-3XL

228275 Youth
S-XL

- 5.6 ounce 95% polyester/ 5% spandex wicking knit
- Inside of hood cannot be sublimated because it is a single layer
- Heat sealed label
- Overlapping hood
- Set-in sleeves

DESIGN:
GRADIENT
EXPLOSION



**FREESTYLE SUBLIMATED
LONG SLEEVE HOODIE**

228143 Adult
S-4XL

228243 Youth
S-XL

- Dry-Excel™ 100% polyester wicking knit
- Inside of hood cannot be sublimated because it is a single layer
- Garment protects against the sun with 50+ UPF
- Tagless label
- Overlapping hood
- Set-in sleeves

DESIGN:
TRI-TOURNEY



**LADIES FREESTYLE
SUBLIMATED
LONG SLEEVE HOODIE**

228343 Ladies
S-3XL

- Dry-Excel™ 100% polyester wicking knit
- Inside of hood cannot be sublimated because it is a single layer
- Garment protects against the sun with 50+ UPF
- Tagless label
- Overlapping hood
- Set-in sleeves



DESIGN:
SPECTATOR



**FREESTYLE SUBLIMATED
SLEEVELESS HOODIE**

228147 Adult
S-3XL

228247 Youth
S-XL

- Dry-Excel™ 100% polyester wicking knit
- Garment protects against the sun with 50+ UPF
- Tagless label
- Overlapping hood
- Set-in sleeves

DESIGN:
CUTTER



**FREESTYLE SUBLIMATED TURBO
LONG SLEEVE TRAINING TEE**

228112 Adult
XS-3XL

228212 Youth
S-XL

- Dry-Excel™ 100% polyester wicking smooth knit
- Garment protects against the sun with 50+ UPF
- Set-in sleeves

DESIGN:
MARBLE



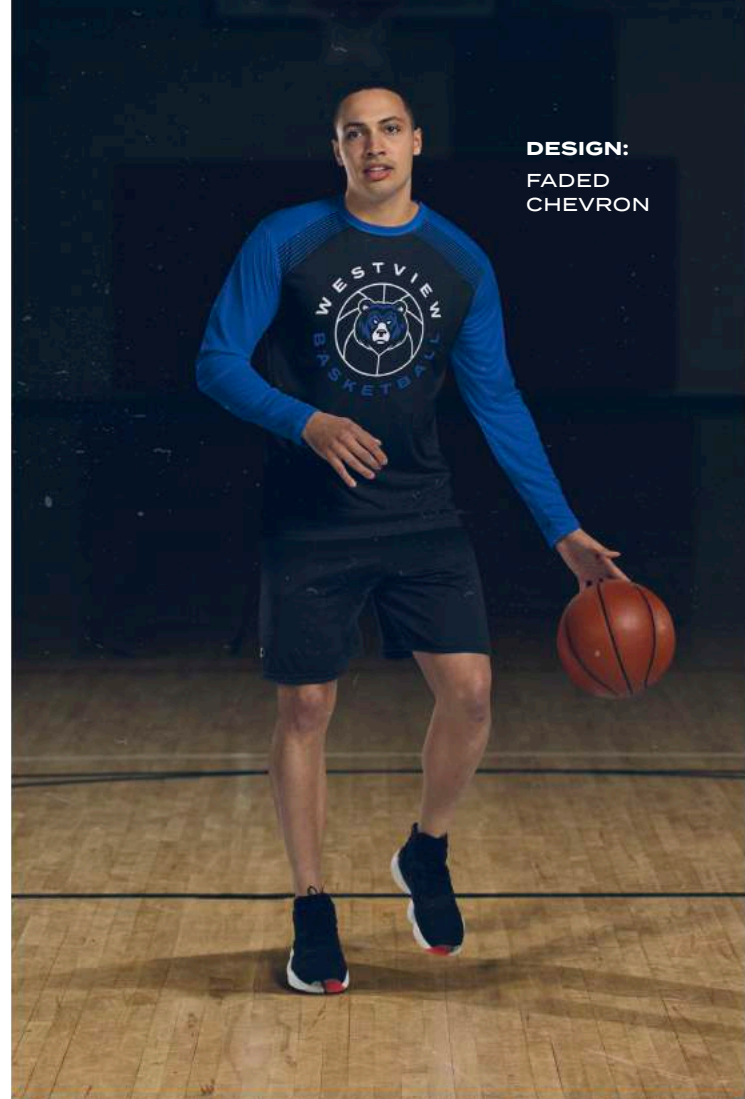
**FREESTYLE SUBLIMATED
TRAINING SHORTS**

228181 Adult
S-3XL

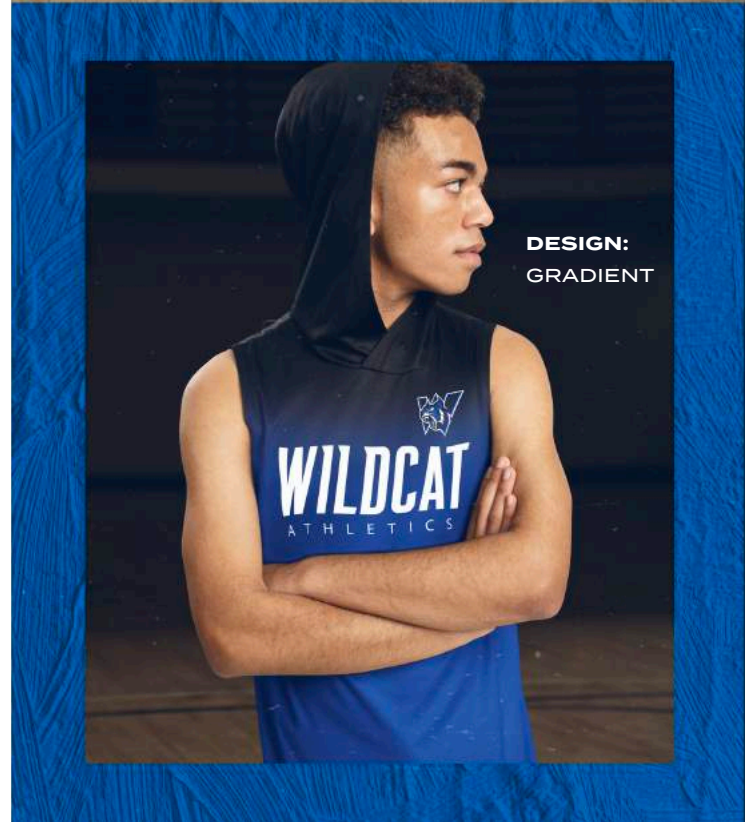
228281 Youth
S-XL

- Dry-Excel™ 100% polyester smooth wicking knit body
- Garment protects against the sun with 50+ UPF
- Covered elastic waistband with inside drawcord
- Side seam pockets
- 10-inch inseam
- Youth inseam graded

DESIGN:
FADED
CHEVRON



DESIGN:
GRADIENT







CROSTOWN





NEW

**CROSTOWN
WARM-UP JACKET**

- 223530** Adult
S-3XL
- 223630** Youth
S-L
- 223730** Ladies
S-2XL

- Dry-Excel™ 100% polyester double-knit
- Dry-Excel 100% polyester mesh inserts
- Ladies' fit on style 223730
- Set-in sleeves
- Front zippered pockets
- Open bottom
- Dropped tail



NEW

**CROSTOWN
WARM-UP PANT**

- 223531** Adult
S-3XL
- 223631** Youth
S-L
- 223731** Ladies
S-2XL

- Dry-Excel™ 100% polyester double-knit
- Dry-Excel 100% polyester mesh inserts
- Ladies' fit on style 222731
- Covered elastic waistband with inside drawcord
- Side seam pockets
- Tapered leg
- Zipper on outside lower leg



BLACK/
BLACK
425

BLACK/
WHITE
420

GRAPHITE/
WHITE
R04

NAVY/
WHITE
301



ROYAL/
WHITE
280

SCARLET/
WHITE
408

WHITE/
BLACK
226



VENTURA

ecoREVIVE™
MADE FROM SUSTAINABLE MATERIALS



**VENTURA
SOFT KNIT HOODIE**

222598 Adult
S-3XL

222698 Youth
S-XL

- Lightweight, soft-knit
- Solids, 89% recycled polyester/11% spandex
- Heathers, 45% recycled polyester/44% polyester/11% spandex
- Tagless label
- 3-panel hood with drawcord on Adult only
- Side seam pockets
- Set-in sleeves
- Self-fabric cuffs and bottom band

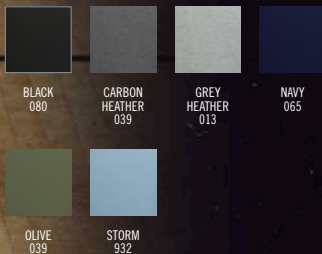


**VENTURA
SOFT KNIT JOGGER**

222599 Adult
S-3XL

222699 Youth
S-XL

- 89% recycled polyester/11% spandex
- Lightweight, soft-knit
- Solids, 89% recycled polyester/11% spandex
- Heathers, 45% recycled polyester/44% polyester/11% spandex
- Tagless label
- Covered elastic waistband with outside drawcord
- Faux fly
- Front pockets with inner valuables pocket inside left pocket
- Back pocket with zipper
- Tapered leg



Dry-
Excel.

VENTURA SOFT-KNIT SHORT SLEEVE HOODIE

222505 Adult
S-3XL

222605 Youth
S-XL

- Lightweight, soft-knit
- Solids, 89% recycled polyester/11% spandex
- Heathers, 45% recycled polyester/44% polyester/11% spandex/Tagless label
- 3-panel hood with drawcord on Adult only
- Side seam pockets
- Set-in sleeves



WARM-UPS



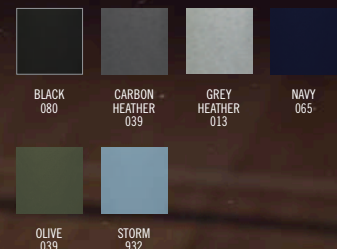
Dry-
Excel.

VENTURA SOFT-KNIT SHORTS

223504 Adult
S-3XL

223604 Youth
S-XL

- Lightweight, soft-knit
- Solids, 89% recycled polyester/11% spandex
- Heathers, 45% recycled polyester/44% polyester/11% spandex/Tagless label
- Covered elastic waistband with outside drawcord (inside drawcord on Youth)
- Front pockets with inner valuables pocket inside left pocket
- Back pocket with zipper
- 8-inch inseam





Dry-
Excel.

**LADIES VENTURA
SOFT KNIT HOODIE**

222798 Ladies
XS-2XL

- Lightweight, soft-knit
- Solids, 89% recycled polyester/11% spandex
- Heathers, 45% recycled polyester/44% polyester/11% spandex
- Tagless label
- 3-panel crossover hood
- Set-in sleeves with thumbholes for warmth
- Self-fabric cuffs and bottom band
- Side vents





**LADIES VENTURA
SOFT KNIT JOGGER**

222799 Ladies
XS-2XL

- Lightweight, soft-knit
- Solids, 89% recycled polyester/11% spandex
- Heathers, 45% recycled polyester/44% polyester/11% spandex Tagless label
- Covered elastic waistband with outside drawcord
- Faux fly on Adult and Youth
- Front pockets with inner valuables pocket inside left pocket
- Back pocket with zipper
- Tapered leg



BLACK
080



CARBON
HEATHER
039



GREY
HEATHER
013



NAVY
065



OLIVE
039



STORM
932



V-STREET





NEW

V-STREET FULL ZIP JACKET

223547 Adult
S-3XL

223647 Youth
S-XL

223747 Ladies
S-2XL

- 100% polyester double-knit
- Ladies' fit on style 223747
- Set-in sleeves
- Front pockets
- Dual inside pockets
- Striped rib-knit collar, cuffs and bottom band



ATHLETIC
HEATHER/
WHITE
152



BLACK/
WHITE
420



NAVY/
WHITE
301



ROYAL/
WHITE
280



SCARLET/
WHITE
408



WHITE/
ATHLETIC
HEATHER
510





MAYFIELD
UNIVERSITY
PANTHERS





**WICKING FLEECE
SHORT SLEEVE HOODIE**

6871 Adult
S-4XL

- 5.9 ounce, 100% polyester performance wicking fleece with color secure® technology that helps prevent dye migration
- Tear away label
- Self-lined hood with drawcord
- Set-in sleeves
- Front pouch pocket
- Self-fabric bottom band
- Coordinating pants 556615568



ATHLETIC
GREY
009

BLACK
080

GRAPHITE
059

NAVY
065



ROYAL
060

SCARLET
083

WHITE
005



Available in Adult/Youth Only

BLACK/ GOLD 421	COLUMBIA BLUE/ WHITE 293	DARK GREEN/ WHITE 438	GRAPHITE/ WHITE R04

Available in Adult/Youth Only

KELLY/ WHITE 340	MAROON/ WHITE 380	NAVY/ GOLD 302	ORANGE/ WHITE 320

Available in Adult/Youth Only

PURPLE/ WHITE 450	ROYAL/ GOLD 281	SCARLET/ BLACK 406	
BLACK/ WHITE 420	NAVY/ WHITE 301	ROYAL/ WHITE 280	SCARLET/ WHITE 408



REVERSIBLE



**TRICOT MESH
REVERSIBLE JERSEY 2.0**

161 Adult
S-3XL

162 Youth
XXS-L

- Two layers of 100% polyester sports mesh with color secure® technology that helps prevent dye migration
- Outside locker label
- V-neck collar
- Each layer hemmed separately for easy embellishment



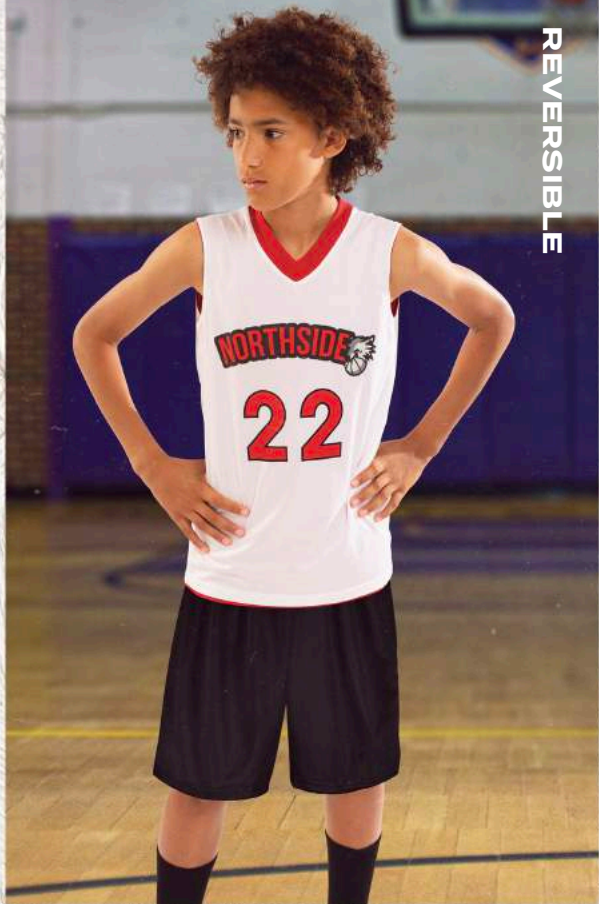
**LADIES TRICOT MESH
REVERSIBLE JERSEY 2.0**

163 Ladies
XS-2XL

- Two layers of 100% polyester sports mesh with color secure® technology that helps prevent dye migration
- Outside locker label
- Racerback styling
- Each layer hemmed separately for easy embellishment

REVERSIBLE





REVERSIBLE



**REVERSIBLE
TWO-COLOR JERSEY**

152 Adult
S-3XL

153 Youth
S-L

- 100% polyester wicking knit with color secure® technology that helps prevent dye migration
- Tear away label
- Each layer hemmed separately for easy embellishment



**LADIES REVERSIBLE
TWO-COLOR JERSEY**

154 Ladies
S-2XL

- 100% polyester wicking knit with color secure® technology that helps prevent dye migration
- Tear away label
- Each layer hemmed separately for easy embellishment

Available in Adult/Youth Only



MODIFIED MESH SHORTS

1850 Adult
S-4XL

1851 Youth
XXS-XL

- 100% polyester sports mesh with color secure® technology that helps prevent dye migration
- 100% polyester wicking knit lining with color secure® technology
- Tagless label
- Covered elastic waistband with inside drawcord
- 7-inch inseam
- Youth inseam graded





COOLCORE® LONG SLEEVE COMPRESSION TEE

R20CPM Adult
S-3XL

- 84% polyester/16% spandex elastane Xtreme compression cloth with Coolcore® technology
- 92% polyester/8% elastane stretch mesh inserts with Coolcore® technology
- Garment protects against the sun with 50+ UPF
- Tagless label
- Raglan sleeves



BLACK BLK GRID IRON SILVER GSV MAROON MAR NAVY NAV



ROYAL ROY STEALTH SHL TRUE RED TRR WHITE WHI



COOLCORE® HALF SLEEVE COMPRESSION TEE

R21CPM Adult
S-3XL

- 84% polyester/16% spandex elastane Xtreme compression cloth with Coolcore® technology
- 92% polyester/8% elastane stretch mesh insert on center back and underarm
- Garment protects against the sun with 50+ UPF
- Tagless label
- Raglan sleeves
- Dropped tail



BLACK BLK GRID IRON SILVER GSV MAROON MAR NAVY NAV



ROYAL ROY STEALTH SHL TRUE RED TRR WHITE WHI



COOLCORE® SLEEVELESS COMPRESSION TANK

R22CPM Adult
XS-3XL

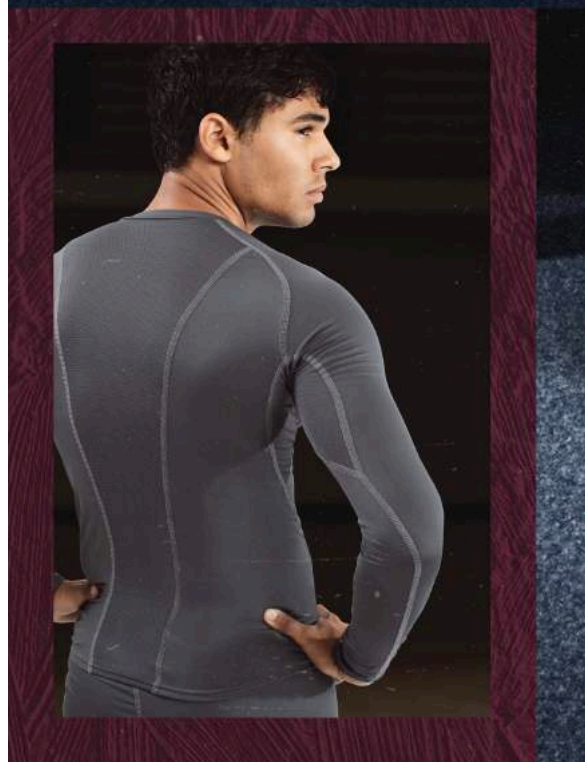
- 84% polyester/16% spandex elastane Xtreme compression cloth with Coolcore® technology
- 92% polyester/8% elastane stretch mesh inserts underarm
- Garment protects against the sun with 50+ UPF
- Tagless label
- Dropped tail



BLACK BLK GRID IRON SILVER GSV NAVY NAV



ROYAL ROY TRUE RED TRR WHITE WHI







**COOLCORE®
COMPRESSION SHORTS**

R24CPM Adult
XS-3XL

- 84% polyester/16% spandex elastane Xtreme compression cloth with Coolcore® technology
- 92% polyester/8% elastane stretch mesh gusset
- Garment protects against the sun with 50+ UPF
- Ultra tight fit
- Tagless label
- Branded soft brushed back exposed elastic waistband provides comfort



BLACK BLK
GRIDIRON SILVER GSV
WHITE WHI



**COOLCORE®
COMPRESSION 7/8 TIGHT**

R23CPM Adult
XS-3XL

- 86% polyester/14% spandex elastane Xtreme compression cloth with Coolcore® technology
- 92% polyester/8% elastane stretch mesh insert at back of knee and gusset
- Garment protects against the sun with 50+ UPF
- Ultra tight fit
- Tagless label
- Branded soft brushed back exposed elastic waistband provides comfort



BLACK BLK
GRIDIRON SILVER GSV
WHITE WHI



**COOLCORE® COMPRESSION
FULL LENGTH TIGHT**

R25CPM Adult
XS-3XL

- 84% polyester/16% spandex elastane Xtreme compression cloth with Coolcore® technology
- 92% polyester/8% elastane stretch mesh insert at back of knee and gusset
- Garment protects against the sun with 50+ UPF
- Ultra tight fit
- Tagless label
- Branded soft brushed back exposed elastic waistband provides comfort



BLACK BLK
GRIDIRON SILVER GSV
WHITE WHI



COOLCORE® SHORT SLEEVE HOODIE

222142 Adult
XS-3XL

- 88% polyester/12% elastane Coolcore® with color secure® technology that helps prevent dye migration
- Garment protects against the sun with 50+ UPF
- Tagless label
- 3 panel crossover hood
- Set-in sleeves with rolled forward shoulder seam



COOLCORE® SLEEVELESS HOODIE

222590 Adult
XS-3XL

- 88% polyester/12% elastane Coolcore® with color secure® technology that helps prevent dye migration
- 92% polyester knitted mesh/8% elastane wicking knit inserts with Coolcore® technology
- Garment protects against the sun with 50+ UPF
- Tagless label
- Overlapping hood
- Side insert pocket



COOLCORE® TANK

222593 Adult
S-3XL

- 88% polyester/12% elastane Coolcore® with color secure® technology that helps prevent dye migration
- Garment protects against the sun with 50+UPF
- Tagless label
- Rolled forward shoulder and side seam



COOLCORE® SHORTS

222594 Adult
S-3XL

- 88% polyester/12% elastane Coolcore® with color secure® technology that helps prevent dye migration
- 92% polyester knitted mesh/8% elastane wicking knit inserts with Coolcore® technology
- Garment protects against the sun with 50+ UPF
- Tagless label
- Covered elastic waistband
- Side seam pockets
- 7-inch inseam



ATHLETIC GREY 009 BLACK 080 DARK GREEN 035 IRON 98D



MAROON 745 NAVY 065 OLIVE 039 ROYAL 060



SCARLET 083 WHITE 005



BLACK 080 IRON 98D MAROON 745 NAVY 065



ROYAL 060 SCARLET 083 WHITE 005



BLACK 080 IRON 98D MAROON 745 NAVY 065



ROYAL 060 SCARLET 083 WHITE 005



ATHLETIC GREY 009 BLACK 080 IRON 98D



MAROON 745 NAVY 065 ROYAL 060

NEW

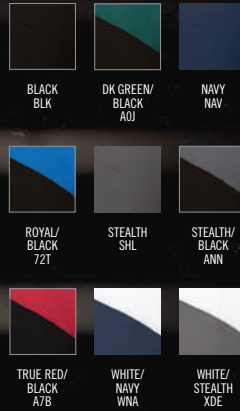


Warmth **5** / 10 Weight **Light**

**LEGEND
HOODED PULLOVER**

R20DSM Adult
S-4XL

- 90% polyester/10% spandex lightweight stretch woven fabric with durable water-repellent finish to keep you dry
- High collar, half-zip pullover style zipper garage
- 3-piece hood with drawcord
- Set-in sleeves
- Side zippered pockets
- Inside mesh valuables pocket
- Spandex bound cuffs
- Open bottom



**LEGEND
STRETCH WOVEN SHORTS**

R20SWM Adult
S-4XL
5XL-6XL in select colors

- 90% polyester/10% spandex lightweight stretch woven fabric with durable water-repellent finish to keep you dry
- Micromesh inseam gusset
- Heat sealed label
- Covered elastic waistband with inside drawcord

Available in 5XL-6XL





LEGEND POLO

R20DKM Adult
S-4XL

R20DKX Ladies
S-3XL

- 4.4 ounce, 100% polyester 2-ply fabric with high mechanical stretch
- Micromesh interior collar stand for breathability around neck
- Dri-Power® Moisture Wicking Technology
- Ladies' fit on style R20DKX
- Heat sealed label
- Three-button placket with collar stay that helps maintain collar shape wash after wash
- Set-in sleeves
- Side vents





Warmth **2** / 10 Weight **Light**

MOMENTUM TEAM 1/4 ZIP PULLOVER

223500	Adult	S-4XL
223600	Youth	S-XL
223700	Ladies	S-3XL

- Dry-Excel™ 100% polyester interlock smooth knit with color secure® technology that helps prevent dye migration
- Garment protects against the sun with 45+ UPF
- Ladies' fit on style 223700
- Tagless label
- Set-in sleeves with angled shoulder seam for mobility and comfort

Available in Adult & Ladies only



Available in Adult & Ladies only

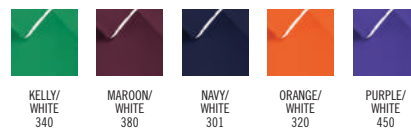
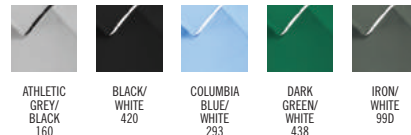


NEW

COOLCORE® PERFORMANCE POLO

222518	Adult	S-4XL
222701	Ladies	XS-3XL

- 88% polyester/12% elastane Coolcore® with color secure® technology that helps prevent dye migration
- Garment protects against the sun with 50+ UPF
- Ladies' fit on style 222701
- Tagless label
- Three-button placket on Adult
- Self-fabric Johnny collar on Ladies'
- Set-in sleeves
- Side vents
- Contoured bottom on Ladies'





UNITED BACKPACK

NEW

327930 11.5"W x 19"H x 9.5"D

- 600-denier polyester with PVC coating
- 210-denier nylon with PVC coating
- Large main interior compartment with two corded zipper pulls
- Large front ventilated compartment with two corded zipper pulls
- Zippered pocket with brushed interior for valuables
- Front pocket with corded zipper pull with hidden inside mesh ball holder that fits Volleyball, Soccer or Basketballs
- Two mesh side pockets
- Adjustable buckles on sides to secure baseball bat
- Internal zippered mesh valuables pocket
- Key clip inside main compartment
- Padded back for support and comfort
- Web handle at top of backpack
- Adjustable padded shoulder straps



BLACK
080



GRAPHITE/
BLACK
172



NAVY/
BLACK
308

