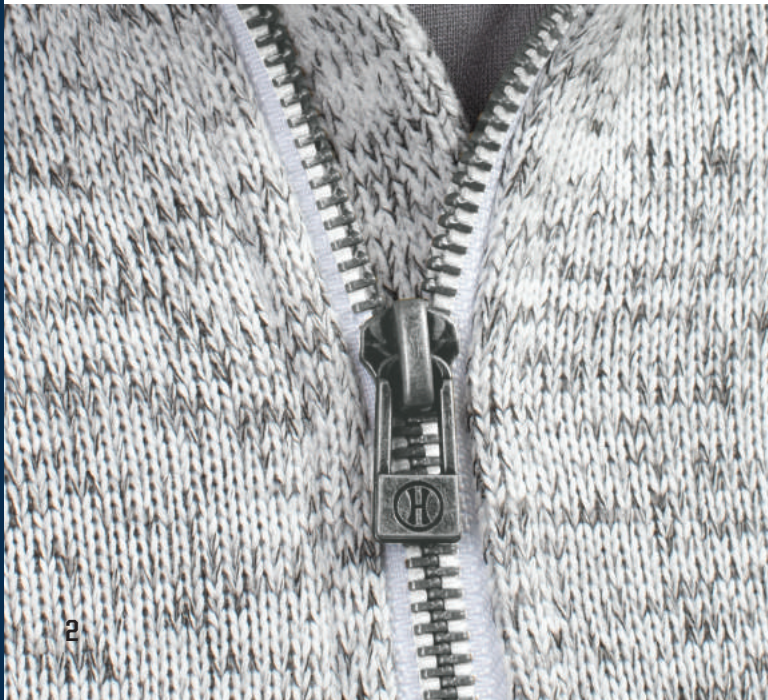






HOLLOWAY

EST. 1946







Front zippered pockets

223740

223540



Warmth **6** / 10 Weight **Mid**

NEW

**ALPINE SWEATER FLEECE
1/4 ZIP PULLOVER**

223540 Adult S-3XL
223740 Ladies XS-2XL

- Eco-Revive® product featuring 80% recycled polyester/20% polyester
- Ladies' fit on style 223740
- Hanger loop label
- Set-in sleeves
- Front zippered pockets
- Open bottom



BLACK HEATHER
K34

GRAPHITE HEATHER
R13

NAVY HEATHER
U22

OLIVE HEATHER
49N

SILVER HEATHER
R12



Warmth **3** / 10 Weight **Light**

NEW COOLCORE® 1/4 ZIP PULLOVER

222140	Adult	S-3XL
222240	Youth	S-XL
222340	Ladies	XS-2XL

- 88% polyester/12% elastane Coolcore® with color secure® technology that helps prevent dye migration
- Ladies' fit on style 222340
- Garment protects against the sun with 50+ UPF
- Tagless label
- Set-in sleeves with rolled forward shoulder seam



ATHLETIC GREY 009 BLACK 080 COLUMBIA BLUE 089 DARK GREEN 035



IRON 980 MAROON 745 NAVY 065 OLIVE 039



PURPLE 747 ROYAL 060 SCARLET 083 WHITE 005



**CHILL FLEECE 2.0
COLLECTION**

ecoREVIVE®
SUSTAINABLE FABRIC TECHNOLOGY

6852



6854



Back



**MORE FROM THE
CHILL FLEECE 2.0 COLLECTION**



**COORDINATING
1/2 ZIP PULLOVER**
6855 | 6856 | 6857



**COORDINATING
FULL ZIP HOODIE**
6858 | 6859 | 6860



**COORDINATING
HEADBAND**
6893

Warmth **6/10** Weight **Mid**

NEW

CHILL FLEECE VEST 2.0

6852 Adult S-3XL
6854 Ladies XS-2XL

- Eco-Revive® product featuring 8 ounce, 70% recycled polyester/30% polyester
- Ladies' fit on style 6854
- Hanger loop label
- Full front zipper with zipper garage to keep elements out
- Front zippered pockets
- Spandex bound sleeve holes
- Open bottom



BLACK
080

GRAPHITE
059

NAVY
065

OLIVE
039

OYSTER
531

STORM
932



Back



223747



223547

229559

Warmth **6 / 10** Weight **Mid**

NEW

V-STREET FULL-ZIP JACKET

- 223547** Adult S-3XL
- 223647** Youth S-XL
- 223747** Ladies S-2XL

- 100% polyester double-knit
- Ladies fit on style 223747
- Woven label
- Front zipper
- Set-in sleeves
- Front pockets
- Dual inside pockets
- Striped rib-knit collar, cuffs and bottom band



ATHLETIC HEATHER/
WHITE
152

BLACK/
WHITE
420

NAVY/
WHITE
301

222702



ROYAL/
WHITE
280

SCARLET/
WHITE
408

WHITE/
ATHLETIC HEATHER
510



Warmth **5** / 10

Weight **Light**

NEW

SERIESX FULL-ZIP JACKET

- 223558** Adult S-3XL
- 223658** Youth S-XL
- 223758** Ladies XS-2XL

- Micron™ polyester is a lightweight, wind/water-resistant fabric
- 100% polyester micromesh lining
- Ladies fit on style 223758
- Woven label
- Front zipper
- Set-in sleeves
- Front zippered pockets
- Elastic cuffs
- Adjustable bottom hem with hidden shockcord closure in right pocket on Adult and Ladies



223558

229531



223758

229731



BLACK 080

CARBON 096

NAVY 065

MORE FROM THE SERIESX COLLECTION



229528 | 229628 | 229728
SeriesX Hooded Jacket



229531 | 229631 | 229731
SeriesX Pant



229533 | 229633 | 229733
SeriesX Pullover



Warmth **5** / 10 Weight **Mid**

NEW

CROSTOWN JACKET

- 223530** Adult S-3XL
- 223630** Youth S-XL
- 223730** Ladies S-2XL

- Dry-Excel™ 100% polyester double-knit
- Dry-Excel™ 100% polyester mesh inserts
- Ladies' fit on style 223730
- Woven label
- Front zipper
- Set-in sleeves
- Front zippered pockets
- Open bottom



BLACK/BLACK 425

BLACK/WHITE 420

GRAPHITE/WHITE R04

NAVY/WHITE 301



ROYAL/WHITE 280

SCARLET/WHITE 408

WHITE/BLACK 226



223730

223530

223731

223531



Warmth **5** / 10 Weight **Mid**

NEW

CROSTOWN PANT

- 223531** Adult S-3XL
- 223631** Youth S-XL
- 223731** Ladies S-2XL

- Dry-Excel™ 100% polyester double-knit
- Dry-Excel 100% polyester mesh inserts
- Ladies' fit on style 222731
- Woven label
- Covered elastic waistband with inside drawcord
- Side seam pockets
- Tapered leg
- Zipper on outside lower leg



BLACK/BLACK 425

BLACK/WHITE 420

GRAPHITE/WHITE R04

NAVY/WHITE 301

ROYAL/WHITE 280

SCARLET/WHITE 408

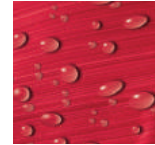
WHITE/BLACK 226



COORDINATING JACKET

DEVIATE JACKET
229539 | 229739

Reflective
Zipper Pull



Water
Repellent

Template X3



Ladies Fit



Warmth **6** / 10 Weight **Mid**

DEVIATE PULLOVER

229541 Adult XS-3XL

229741 Ladies XS-2XL

- Dry-Excel™ bonded polyester is a scuba bonded fabric featuring a tonal striation
- Poly/spandex storm cuffs for weather protection
- Raglan sleeves
- Front zippered pockets
- Zipper garage and storm flap

Only available in Adult



BLACK
080

CARBON
J96

NAVY
065

ROYAL
060

SCARLET
083

WHITE
005

FOREST
038

MAROON
045



P303



Back

R20SWM

LEGEND COLLECTION



OUTERWEAR | PULLOVERS



Side zippered pockets



Warmth 5 / 10

Weight Light

LEGEND HOODED PULLOVER

R20DSM Adult S-4XL

- 90% polyester/10% spandex lightweight stretch woven fabric with durable water-repellent finish to keep you dry
- High collar, half-zip pullover style zipper garage
- 3-piece hood with drawcord
- Set-in sleeves
- Side zippered pockets
- Inside mesh valuables pocket
- Spandex bound cuffs
- Open bottom



BLACK
BLK

DK GREEN/
BLACK
A0J

NAVY
NAV



ROYAL/
BLACK
72T

STEALTH
SHL

STEALTH/
BLACK
ANN



TRUE RED/
BLACK
A7B

WHITE/
NAVY
WNA

WHITE/
STEALTH
XDE



6855

229559



6893

6857

221398

Warmth **6** / 10 Weight **Mid**

CHILL FLEECE 2.0 1/2 ZIP PULLOVER

- 6855** Adult S-3XL
- 6856** Youth XS-L
- 6857** Ladies XS-2XL

- Eco-Revive® product featuring 8 ounce, 70% recycled polyester/30% polyester
- Ladies' fit on style 6857
- Hanger loop label
- Set-in sleeves
- Front zippered pockets with spandex binding detail
- Spandex bound cuffs
- Open bottom



BLACK 080 GRAPHITE 059 NAVY 065 ROYAL 060

Available in Adult & Ladies Only



SCARLET 083 DK GREEN 035 MAROON 745

Available in Adult & Ladies Only



OLIVE 039 OYSTER 53T STORM 932

MORE FROM THE CHILL FLEECE 2.0 COLLECTION



6852
6854
Chill Fleece
2.0 Vest



6858
6859
6860
Chill Fleece 2.0
Full Zip Hoodie



6893
Chill Fleece
2.0 Headband

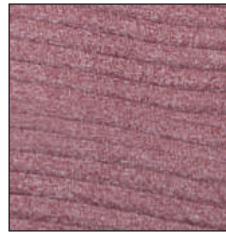
COORDINATING FULL-ZIP
229588



229794



229594



3D Seamless insulated knit traps heat to keep you warm while 3D channels release excess heat to keep you comfortable.



Pleated Back Detail on Ladies



Warmth **5** / 10

Weight **Mid**



3D REGULATE PULLOVER

229594 Adult XS-3XL
229794 Ladies XS-2XL

- 100% polyester heathered knit with seamless quilted insulation for added warmth
- Wik-Sof™ performance fleece lower body
- Ladies' fit on style 229794
- Half-zip pullover style with storm flap and zipper garage
- Set-in sleeves
- Front zippered pockets



BLACK HEATHER/
BLACK
K54

FOREST HEATHER/
FOREST
K95

MAROON HEATHER/
MAROON
K69



NAVY HEATHER/
NAVY
K64

ROYAL HEATHER/
ROYAL
K66



SILVER HEATHER/
SILVER
G0E

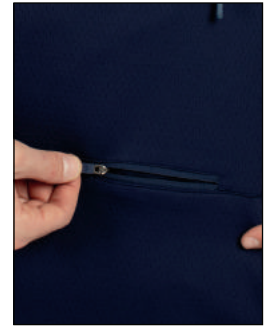
SCARLET HEATHER/
SCARLET
K67



LIMITLESS
COLLECTION



Drawstring Hood



Front Zippered Valuables Pocket



Warmth **5** / 10

Weight **Mid**

LIMITLESS 1/4 ZIP HOODIE

222584 Adult XS-3XL

- Dry-Excel™ 100% polyester wicking double knit mesh texture
- High collar, half-zip pullover style zipper garage
- Pinhole mesh lined hood with drawcord
- Raglan sleeves
- Front pouch pocket
- Half-elastic cuffs
- Dropped tail



BLACK/
BLACK
425

BLACK/
WHITE
420

CARBON/
CARBON
D87\

CARBON/
WHITE
F52

DARK GREEN/
WHITE
438



MAROON/
WHITE
380

NAVY/
NAVY
S14

NAVY/
WHITE
301

ROYAL/
WHITE
280

SCARLET/
WHITE
408

MORE FROM THE LIMITLESS COLLECTION

229580



229579 | 229679 | 229779
Limitless Jacket



229580 | 229680 | 229780
Limitless Pant



Embossed Pattern

Template TW70



Warmth **5** / 10

Weight **Light**

BIONIC WINDSHIRT

229019 Adult S-3XL

- Micron™ polyester is a lightweight, wind/water resistant fabric
- Sleeves and arms are embossed with the Screenmesh print
- Jersey and taffeta lining for added warmth
- Raglan sleeves
- Front pockets
- Elastic cuffs
- Open bottom with adjustable elastic hidden drawcord
- Coordinating pants: 229531 | 229631 | 229731, 229095



BLACK/LT GOLD R16 | BLACK/ORANGE 423 | BLACK/SCARLET 500 | BLACK/VEGAS GOLD 255 | BLACK/WHITE 420 | CARBON/BLACK E84 | CARDINAL/WHITE 409 | DK GREEN/WHITE 438 | KELLY/WHITE 340



MAROON/WHITE 380 | NAVY/LT GOLD S28 | NAVY/SCARLET S20 | NAVY/VEGAS GOLD 256 | NAVY/WHITE 301 | PURPLE/WHITE 450 | ROYAL/LT GOLD S67 | ROYAL/WHITE 280 | SCARLET/WHITE 408



MEDALIST 2.0 COLLECTION

COORDINATING JACKET

4395 | 4396 | 4397



Ladies Fit

Warmth **5** / 10

Weight **Light**

MEDALIST 2.0 PULLOVER

4386 Adult S-3XL

4388 Ladies XS-2XL

- Heavyweight 100% polyester matte brushed tricot
- Tagless label
- Set-in sleeves
- Front pouch pocket
- Coordinating pants: 7731 | 7732 | 7733, 7726 | 7728, 7760 | 7761 | 7762



BLACK/GOLD 421 | BLACK/RED 424 | BLACK/VEGAS GOLD 255 | BLACK/WHITE 420 | DARK GREEN/WHITE 438 | GRAPHITE/WHITE R04 | KELLY/WHITE 340

Available in Adult only



NAVY/WHITE 301 | PURPLE/WHITE 450 | RED/WHITE 400 | ROYAL/WHITE 280 | BLACK/ORANGE 423 | MAROON/WHITE 380 | NAVY/VEGAS GOLD 256



Warmth **4** / 10 Weight **Light**

WELD HYBRID PULLOVER

229596 Adult S-3XL
4XL in select colors

- 90% polyester/10% spandex, 4-way stretch woven fabric front panel and back yoke
- Flex-Sof™ smooth, lightweight, polyester knit with superior abrasion-resistance & high mechanical stretch on lower body, sleeves and back
- Low profile collar
- Set-in sleeves
- Spandex bound cuff
- Alternate pant: 229544



MAROON/CARBON/E92 ORANGE/CARBON/E96 PURPLE/CARBON/E2N KELLY/CARBON/94D CARBON/CARBON/D67 FOREST/CARBON/E79

Available in Adult 4XL



BLACK/CARBON/D86 NAVY/CARBON/E81 WHITE/CARBON/E94 ROYAL/CARBON/E86 SCARLET/CARBON/E90



Warmth **3** / 10 Weight **Light**

WELD JOGGERS

229559 Adult XS-3XL
229799 Ladies XS-2XL

- 90% polyester/10% spandex
- Covered elastic waistband with outside drawcord and silicone dipped tips (inside drawcord on XS-S)
- Front pockets
- Back locking welt pocket on Adult
- Tapered leg
- Zipper on outside lower leg
- Articulated seaming at the knees



NAVY 065 BLACK 080 CARBON J96

Zippered valuables pocket with reflective metallic silicone



Back

Side Pockets





Warmth 4 / 10 Weight Light

WIZARD PULLOVER

229016 Adult S-3XL

- Micron™ polyester is a lightweight, wind/water resistant fabric
- Micromesh lined nylon body & hood
- Adjustable mesh lined hood with eyelets and concealed cord locks
- Front zippered pockets
- Half-elastic cuffs
- Open bottom with adjustable elastic hidden drawcord



Adjustable Vent For Decoration Access



BLACK/ LIGHT GOLD R16
 BLACK/ ORANGE 423
 BLACK/ SCARLET 500
 BLACK/ WHITE 420
 MAROON/ WHITE 380
 NAVY/ LIGHT GOLD S28



NAVY/ WHITE 301
 ROYAL/ WHITE 280
 SCARLET/ WHITE 408
 CARBON/ WHITE F52
 DARK GREEN/ WHITE 438



Warmth 4 / 10 Weight Light

SABLE PANT

229095 Adult XS-3XL

- Micron™ lightweight polyester shell
- Mesh (UPPER LEG) and nylon lining (LOWER LEG)
- Covered elastic waistband with inside drawcord
- Front pockets
- Back pockets with zipper
- Zipper on outside lower leg and bottom snaps

Dropped Tail



BLACK/ ORANGE 423
 BLACK/ SCARLET 500
 BLACK/ WHITE 420
 NAVY/ WHITE 301
 ROYAL/ WHITE 280
 SCARLET/ WHITE 408
 DK GREEN/ WHITE 438
 MAROON/ WHITE 380



BLACK/ BLACK 425
 CARBON/ CARBON D87
 NAVY/ NAVY S14





398F

229733

229533

229556
pg. 145



Embossed Pattern

COORDINATING WARM-UP

- 223528 | 223628 | 223728
- 229528 | 229628 | 229728
- 229531 | 229631 | 229731



Warmth 4 / 10

Weight Light

SERIESX PULLOVER

- 229533** Adult XS-3XL
4XL in select colors
- 229633** Youth S-XL
- 229733** Ladies XS-2XL

- Micron™ polyester is a lightweight, wind/water-resistant fabric
- Embossed inserts for subtle textured pattern
- Micromesh lined nylon body
- Taffeta lined sleeves
- Ladies' fit on 229733
- Set-in sleeves
- Front pockets
- Spandex bound cuffs
- Dropped tail with side vents
- Alternate pant: 229531 | 229631 | 229731, 229095



Side seam zipper for easy on/off

Available in 4XL, Ladies & Youth

Available in Adult & Ladies



BLACK
080

CARBON
J96

WHITE
005



NAVY
065

ROYAL
060

SCARLET
083



BLACK/
ORANGE
423

BLACK/
SCARLET
500



CARDINAL
J36

CARBON
GOLD
43M

COLUMBIA
BLUE
089

DARK
GREEN
035

KELLY
030

MAROON
045

NAVY/
GOLD
302

NAVY/
SCARLET
S20

PURPLE
050



Jacket folds up into zippered front pocket

COORDINATING JACKET & HOODIE
229542 & 222552 | 222652



Warmth 4 / 10 Weight Light

RANGE PACKABLE PULLOVER

- 229554** Adult S-3XL
4XL in select colors
- 229654** Youth S-XL
Select Colors

- Tech weave printed Micron™ lightweight polyester, wind/water resistant fabric
- Adjustable 3 piece hood with eyelets and concealed cord locks on Adult only (elastic on youth)
- Raglan sleeves
- Half-elastic cuffs
- Adjustable bottom hem with hidden shockcord closure on right side of pocket (on Adult only)
- Coordinating pants: 229095



Warmth 2 / 10 Weight Light

PULLOVER JACKET IN A POCKET

- 3130** Adult S-3XL

- Outer shell of 100% nylon taffeta
- Hood with drawcord
- Set-in sleeves
- Elastic cuffs



Jacket folds up into zippered front pocket concealed under flap.



Warmth 4 / 10

Weight Light



PACK PULLOVER

229534 Adult

S-3XL

4XL in select colors

229634 Youth

S-XL

- 100% polyester MicroTec soft micro denier fabric with PU coating for water-resistance
- Adjustable 3-piece hood
- Adjustable on Adult only (elastic on youth)
- Set-in sleeves
- Spandex bound cuff
- Adjustable bottom hem with hidden shockcord closure in right pocket (on Adult)



Jacket folds up into zippered front pocket



Adjustable Hood



Back



121C



Available in 4XL & Youth

Available in Adult & Youth



BLACK 080

CARBON 196

NAVY 065



ROYAL/ ATHLETIC GREY 52E

SCARLET/ ATHLETIC GREY 51E



NAVY/ GOLD 302

NAVY/ SCARLET 520

OLIVE 039

ORANGE/ ATHLETIC GREY 57E

PURPLE/ ATHLETIC GREY 55E

ROYAL/ GOLD 281



BLACK/ ATHLETIC GREY 42M

BLACK/ ORANGE 423

BLACK/ SCARLET 500

KELLY/ ATHLETIC GREY 56E

MAROON/ ATHLETIC GREY 54E

NAVY/ ATHLETIC GREY 50E



COORDINATING JACKET
6861 | 6862

Warmth **4** / 10 Weight **Mid**

MICRO-LITE FLEECE 1/4 ZIP PULLOVER

- 6863** Adult XS-3XL
4XL in select colors
- 6864** Ladies XS-2XL
3XL in select colors

- Eco-Revive® product featuring 5.3 ounce, 70% recycled polyester/30% polyester
- Ladies' fit on style 6864
- Hanger loop label
- Set-in sleeves with shoulder insert
- Open bottom

Available in Adult 4XL & Ladies 3XL



BLACK 080 DK GREEN 035 GRAPHITE 059 MAROON 745

Available in Adult 4XL & Ladies 3XL



NAVY 065 OYSTER 53T ROYAL 060 STORM 932



ATHLETIC GREY 009 COLUMBIA BLUE 089 KELLY 030 OLIVE 039



ORANGE 029 PURPLE 747 SCARLET 083



6863



6864



Warmth 4 / 10

Weight Mid

MICRO POLY WINDSHIRT/LINED

3415 Adult S-4XL

- Outer shell of 100% micro polyester
- Lined with 100% polyester taffeta
- Rib-knit V-neck collar, cuffs and bottom band
- Set-in sleeves
- Side seam pockets



BLACK
080

RED
040

ROYAL
060

NAVY
065



Warmth 2 / 10

Weight Light

SHORT SLEEVE PULLOVER

872RVM Adult S-3XL

872RVB Youth S-XL

- 100% polyester lightweight breathability fabric
- Dri-Power® Moisture Wicking Technology
- Raglan sleeves
- Adjustable bottom hem with hidden shockcord closure (on Adult only)

Colors Available in Youth



BLACK/
WHITE
BWH

NAVY/
WHITE
NWH

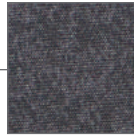
ROYAL/
WHITE
ROW

TRUE RED/
WHITE
TRW

WHITE/
STEALTH
XDE



RAIDER COLLECTION



Tech Print Pattern

Sleeve pocket with silver media port & silicone welded zipper

Divided Front Pouch Pocket

Spandex-Bound Cuffs

COORDINATING JACKET

229157 | 229357

Warmth **2** / 10

Weight **Ultra Light**



RAIDER PULLOVER

229155 Adult XS-3XL
4XL in select colors

- Ultra-lightweight Aero-Tec™ fabric provides both weather protection and zero noise, without the bulk
- Set-in sleeves

Available in Adult 4XL



CARBON PRINT/
BLACK
H05

CARBON PRINT/
GRAPHITE
H60

CARBON PRINT/
NAVY
H03

CARBON PRINT/
ROYAL
H02

CARBON PRINT/
SCARLET
H01



CARBON PRINT/
FOREST
H69

CARBON PRINT/
MAROON
H06

CARBON PRINT/
ORANGE
H07

CARBON PRINT/
PURPLE
H68

CARBON PRINT/
WHITE
H04



Tech Print Pattern

Sleeve pocket with silver media port & silicone welded zipper

Divided Front Pouch Pocket

Warmth **2** / 10

Weight **Ultra Light**



RAIDER PULLOVER SHORT SLEEVE

229545 Adult S-3XL
4XL in select colors

- Ultra-lightweight Aero-Tec™ fabric provides both weather protection and zero noise, without the bulk
- Set-in sleeves

Available in Adult 4XL



CARBON PRINT/
BLACK
H05

CARBON PRINT/
NAVY
H03

CARBON PRINT/
ROYAL
H02

CARBON PRINT/
SCARLET
H01

CARBON PRINT/
WHITE
H04



CARBON PRINT/
FOREST
H69

CARBON PRINT/
GRAPHITE
H60

CARBON PRINT/
MAROON
H06

CARBON PRINT/
ORANGE
H07

CARBON PRINT/
PURPLE
H68



Stretch mesh at center back for maximum mobility



Side seam zipper for easy on/off

Warmth **2** / 10

Weight **Ultra Light**

CLUBHOUSE SHORT SLEEVE PULLOVER 

229581 Adult S-4XL

5XL in select colors

229681 Youth S-XL

- Areo-Tec 100% polyester
- Low profile collar
- Set-in sleeves
- Side seam pockets




ES474

229556

Available in 5XL



BLACK/
WHITE
420

GRAPHITE/
WHITE
R04

NAVY/
WHITE
301

WHITE/
GRAPHITE
751

ROYAL/
WHITE
280

SCARLET/
WHITE
408

DARK
GREEN/
WHITE
438

MAROON/
WHITE
380

BLACK/
ORANGE
423

NAVY/
SCARLET
S20



Side zipper for easy on/off



Back



ES471



Warmth **2 / 10** Weight **Ultra Light**

NEW

CLUBHOUSE PULLOVER



229595 Adult S-3XL
229695 Youth S-XL

- Areo-Tec 100% polyester
- Woven label
- Quarter zip pullover style with zipper garage
- Low profile collar
- Set-in sleeves
- Side seam pockets
- Spandex bound cuffs



BLACK/
BLACK
425

BLACK/
ORANGE
423

BLACK/
WHITE
420

DARK GREEN/
WHITE
438



GRAPHITE/
WHITE
R04

NAVY/
NAVY
S14

NAVY/
SCARLET
S20

NAVY/
WHITE
S01



ROYAL/
WHITE
280

SCARLET/
WHITE
408

WHITE/
GRAPHITE
751





Ladies Fit

QZ7EAM

QZ7EAX



Warmth **3** / 10 Weight **Light**

**DRI-POWER® LIGHTWEIGHT
1/4 ZIP PULLOVER**

QZ7EAM Adult XS-3XL
QZ7EAX Ladies S-2XL

- 100% polyester 2-tone interlock
- Lightweight stretch fabric
- Dri-Power® Moisture Wicking Technology
- Odor protection
- Tagless label
- Set-in sleeves

Available in
Adult only



BLACK
BLK

CARDINAL
CRD

DARK GREEN
DGR

NAVY
NAV

MAROON
MAR

PURPLE
PUR

ROYAL
ROY

STEALTH
SHL

TRUE RED
TRR



PRISM
COLLECTION

Honeycomb Knit

MORE FROM THE
PRISM COLLECTION



222568
222768
Prism Polo



222576
222776
Prism Bold Polo



Warmth **2** / 10 Weight **Light**

PRISM BOLD 1/4 ZIP PULLOVER

222591 Adult S-3XL
222791 Ladies XS-2XL

- Dry-Excel™ 4.8 ounce 100% polyester wicking honeycomb knit
- Garment protects against the sun with 50+ UPF
- Ladies' fit on style 222791
- Tagless label
- Set-in sleeves



Back



222591

222791



BLACK/
CARBON
D66

BLACK/
GOLD
421

BLACK/
ORANGE
423

BLACK/
SCARLET
500

MAROON/
WHITE
380

NAVY/
GOLD
302

BLACK/
WHITE
420

CARBON/
WHITE
F52

NAVY/
WHITE
301

ROYAL/
WHITE
280

SCARLET/
WHITE
408



**ELECTRIFY COOLCORE®
COLLECTION**



Warmth **2** / 10 Weight **Light**

**ELECTRIFY COOLCORE®
1/2 ZIP PULLOVER**

- 222574** Adult S-3XL
- 222674** Youth S-XL
- 222774** Ladies XS-3XL

- 87% polyester/13% elastane heathered wicking knit with Coolcore® technology
- 92% polyester knitted mesh/8% elastane wicking knit inserts with Coolcore® technology
- Garment protects against the sun with 50+ UPF on body, (25+ on mesh inserts)
- Ladies' fit on style 222774
- Tagless label
- Raglan sleeves with thumbholes for warmth on Ladies'



Back



222574



222774



Thumbholes on Ladies

MORE FROM THE ELECTRIFY COOLCORE® COLLECTION



- 222571**
- 222671**
- 222771**
- Electrify Coolcore® Tee



- 222570**
- 222670**
- 222770**
- Electrify Coolcore® Long Sleeve Tee



- 222589**
- 222689**
- Electrify Coolcore® Hoodie



- 222572**
- 222772**
- Electrify Coolcore® Polo



*Heathering not available in White.



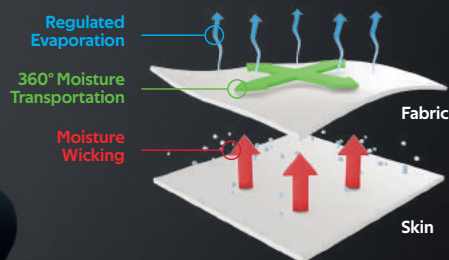
229394



Coolcore® is engineered to distribute moisture quickly throughout the garment.

As the moisture spreads it dries faster to keep you cool and comfortable, and has UPF 50 sun protection

Patented Fabric Technology



Technology Comparison



The same athlete after 20 minutes of activity



STAY COOL



SHADOW TONAL HEATHER COLLECTION



Warmth **2** / 10

Weight **Light**

SHADOW TONAL HEATHER 1/4 ZIP PULLOVER

2908 Adult S-3XL

2909 Ladies XS-2XL

- 100% polyester heathered wicking knit top body, collar and sleeves
- 100% polyester wicking knit solid bottom body
- Tagless label
- Set-in sleeves
- Dropped tail bottom on Ladies'



BLACK 080

DARK GREEN 035

MAROON 045

NAVY 065

ORANGE 029

Available in Ladies Only



PURPLE 050

RED 040

ROYAL 060

SILVER 099

POWER PINK 809



Ladies Fit



ATTAIN COLLECTION



Warmth **2** / 10

Weight **Light**

ATTAIN 1/4 ZIP PULLOVER

2785 Adult S-3XL
4XL-5XL in select colors

2786 Youth S-XL

2787 Ladies XS-2XL
3XL in select colors

- 100% polyester wicking knit with color secure® technology that helps prevent dye migration
- Tear away label
- Set-in sleeves
- Dropped tail bottom on Ladies'

Available in Adult 4XL-5XL & Ladies 3XL



BLACK 080

GRAPHITE 059

NAVY 065

WHITE 005

DARK GREEN 035

RED 040

ROYAL 060

SILVER 099

Available in Adult & Ladies only



COLUMBIA BLUE 089

CARDINAL 036

GOLD 025

KELLY 030

MAROON 045

ORANGE 029

PURPLE 050

VEGAS GOLD 023

Available in Ladies Only

POWER PINK 809



Ladies Fit



**MOMENTUM TEAM
COLLECTION**



Warmth **2** / 10 Weight **Light**

**MOMENTUM TEAM
1/4 ZIP PULLOVER**

223500	Adult	S-4XL
223600	Youth	S-XL
223700	Ladies	S-3XL

- Dry-Excel™ 100% polyester interlock smooth knit with color secure® technology that helps prevent dye migration
- Garment protects against the sun with 45+ UPF
- Ladies' fit on style 223700
- Tagless label
- Set-in sleeves with angled shoulder seam for mobility and comfort



223500



223700



BLACK/
IRON
62U

BLACK/
ROYAL
426

BLACK/
SCARLET
500

BLACK/
WHITE
420



NAVY/
WHITE
301

ROYAL/
WHITE
280

SCARLET/
WHITE
408

Available in Adult & Ladies only



BLACK/
DARK GREEN
429

BLACK/
MAROON
486

BLACK/
ORANGE
423

BLACK/
PURPLE
487

BLACK/
KELLY
90M



GOLD/
ROYAL
240

ORANGE/
NAVY
777

SCARLET/
NAVY
W86

IRON/
WHITE
590

MORE FROM THE MOMENTUM TEAM COLLECTION

223501
223601
223701
Momentum
Team Tee



223502
223602
223702
Momentum
Team Long
Sleeve Tee



222540
222640
222740
Momentum
Team
Hoodie



P820
Momentum
Team Cap



**ULTRA SOFT
COTTONY FEEL!**



FREESTYLE SUBLIMATED
1/4 ZIP PULLOVER

- 228107** Adult S-3XL
- 228207** Youth S-XL
- 228307** Ladies S-3XL

Speckled
Gradient

Rectangular
Prism



Watercolor Camo II



Spectator



ULTRA SOFT COTTONY FEEL!



FREESTYLE SUBLIMATED
COTTON-TOUCH
POLY 1/4 ZIP PULLOVER

- 228145** Adult S-3XL
- 228245** Youth S-XL
- 228345** Ladies S-3XL

Wavy
Vertical
Stripe

Water Color
Camo II



Tie Dye



Gradient



Two-Way Front Zipper

Elasticized Hook & Loop Fastener Cuffs



Warmth 9/10

Weight Heavy

CONQUEST JACKET

229162 Adult S-3XL

- Duraweav™ fabric has a smooth nylon surface
- Anti-pill microfleece and quilted nylon lining
- Adjustable 3-piece hood with eyelets and concealed cord locks
- Knee length
- Set-in sleeves
- Front right chest media pocket with inside hidden cord port
- Front pockets with microfleece lining



BLACK 080

NAVY 065

ROYAL 060

SCARLET 083



Warmth 7/10

Weight Mid

RANGE JACKET

229542 Adult S-3XL

- Tech weave printed Micron™ lightweight polyester
- Omni-Sof™ microfleece lined
- Taffeta lined sleeves
- Adjustable 3 piece hood with eyelets & concealed cord locks (on Adult only) (elastic on youth)
- Raglan sleeves
- Shiny coated front pockets with black pull cord
- Interior decoration zipper
- Inside zippered valuables pocket
- Half-elastic cuffs
- Open bottom with adjustable elastic hidden drawcord on Adult sizes only
- Coordinating pants: 229095



CARBON J96

NAVY/CARBON E81

FOREST/CARBON E79

MAROON/CARBON E92



ROYAL/CARBON E86

SCARLET/CARBON E90

SCARLET 083

WHITE/CARBON E94



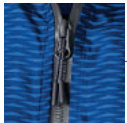
RANGE COLLECTION

Template TW76



Dropped Tail

Template W3



Reflective Zipper Pull & Matte Tips



Tech Weave Print



Dropped Tail



Template FS48

Zipper on Outside Lower Leg and Bottom Snaps



Warmth 8 / 10

Weight Heavy

CHARGER JACKET

229059 Adult S-4XL

229259 Youth S-XL

- Micro-Cord™ is a woven polyester fabric with a raised, ribbed texture
- Omni-Sof™ microfleece lining
- Nylon sleeve lining
- Adjustable hood with eyelets and concealed cord locks on Adult sizes only (Youth has elastic)
- Raglan sleeves
- Front zippered pockets
- Open bottom with adjustable elastic hidden drawcord (on Adult only)

Available in Adult Only



BLACK/WHITE 420

DK GREEN/WHITE 438

NAVY/WHITE 301

SCARLET/WHITE 408

KELLY/WHITE 340

ROYAL/WHITE 280

Available in Adult Only



BLACK/LT GOLD R16

BLACK/SCARLET 500

BLACK/ORANGE 423

CARBON/WHITE F52

MAROON/WHITE 380

NAVY/LT GOLD S28



Warmth 6 / 10

Weight Mid

PACER PANT

229056 Adult S-3XL

- Micro-Cord™ woven polyester fabric with a raised, ribbed texture
- Mesh lined upper leg and nylon lining lower leg
- Front pockets
- Back pockets with zipper



NAVY 065

ROYAL 060

SCARLET 063

BLACK 080

CARBON J96



P500



Back



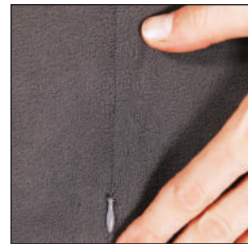
P303



Fully Reversible



Detachable hood



Interior all-access decoration zipper



229787



229587



NEW YOUTH SIZE

Warmth 7 / 10 Weight Heavy

TURNABOUT REVERSIBLE JACKET

229587 Adult XS-3XL
229687 Youth S-XL
229787 Ladies XS-2XL

• Micron™ polyester is a lightweight, wind/water-resistant fabric

- Lightweight fleece inner layer
- Ladies' fit on style 229787
- Set-in sleeves
- Front zippered pockets on both sides
- Elastic cuffs
- Open bottom

Available in Adult & Youth only



ATHLETIC GREY/CARBON 48E

BLACK/CARBON D86

DARK GREEN/CARBON C84

MAROON/CARBON E92

NAVY/CARBON E81

OLIVE/BLACK 85E

ORANGE/BLACK 321

ROYAL/CARBON E86

SCARLET/BLACK 48E

SCARLET/CARBON E90



Athletic Heather
Fleece Lining



Template J2

Front Zippered
Pockets



Warmth 7 / 10

Weight Heavy



HOMEFIELD JACKET

229111 Adult S-3XL

229211 Youth S-XL

- Micron™ polyester is a lightweight, wind/water resistant fabric
- Adjustable hood with eyelets & concealed cord locks (on Adult only)
- Raglan sleeves
- Half-elastic cuffs and bottom
- Coordinating pants: 229531 | 229631 | 229731



BLACK/
BLACK
425

BLACK/
ORANGE
423

BLACK/
SCARLET
500

BLACK/
WHITE
420

NAVY/
WHITE
301

ROYAL/
WHITE
280

Available in Adult Only



SCARLET/
WHITE
408

NAVY/
NAVY
S14

MAROON/
WHITE
380

DK GREEN/
WHITE
438

PURPLE/
WHITE
450

Warmth 7 / 10

Weight Heavy



HOODED TAFFETA JACKET/FLEECE LINED

3280 Adult S-4XL

3281 Youth XS-L

- Outer shell of 100% nylon taffeta
- Body, sleeves and hood lined with 75% polyester/13% rayon/12% cotton grey heather fleece
- Hood with drawcord and sliders (youth has elastic)
- Set-in sleeves
- Reinforced slash front pockets with zippers
- Elastic cuffs and bottom



BLACK
080

RED
040

ROYAL
060

NAVY
065



MAROON
045

PURPLE
050

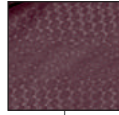
KELLY
030

DARK
GREEN
035



Adjustable Quilted Hood

Embossed Pattern



Half-Elastic Cuffs

Warmth 7/10

Weight Mid



BIONIC HOODED JACKET

229017 Adult S-3XL
229217 Youth S-XL

- Micron™ polyester lightweight, wind/water resistant fabric
- Embossed Micron blocking at hood, shoulders, & top sleeves with the Screenmesh pattern
- Quilted, polyester, taffeta lining
- Adjustable quilted hood with eyelets & concealed cord locks (on Adult only)
- Interior decoration zipper
- Inside zippered pocket
- Dual front zippered pockets
- Coordinating pants: 229531 | 229631 | 229731



BLACK/
CARBON
D86

CARBON/
BLACK
E84

Available in Adult Only



NAVY/
CARBON
E81

DK GREEN/
CARBON
C84

MAROON/
CARBON
E92



RAIDER COLLECTION

COORDINATING PULLOVERS

229545
229155 | 229655



Raider Print



Dual Front Chest Zippered Pocket

Dual Zippered Pockets

Ladies Fit

Warmth 6/10

Weight Mid



RAIDER SOFT SHELL JACKET

229157 Adult S-3XL
4XL in select colors
229357 Ladies XS-2XL
3XL in select colors

- Lightweight, softshell outer fabric in 96% polyester, 4% spandex bonded to brushed back polyester
- Adjustable hood with drawcord (not available on Ladies' XS)
- Internal storm cuffs for weather protection
- Open bottom with adjustable elastic hidden drawcord



CARBON
PRINT/
BLACK
H05

CARBON
PRINT/
NAVY
H03



CARBON
PRINT/
BLACK
H05

CARBON
PRINT/
WHITE
H04

Available in Adult Only



CARBON
PRINT/
FOREST
H69

CARBON
PRINT/
PURPLE
H68

CARBON
PRINT/
MAROON
H06

CARBON
PRINT/
ORANGE
H07

CARBON
PRINT/
ROYAL
H02

CARBON
PRINT/
SCARLET
H01

Durable water repellent finish keeps you dry while knit softshell breathes to keep you comfortable.

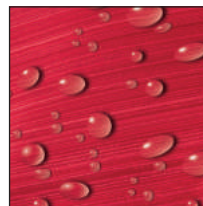


229739



229539

Zippered Pocket



Water Resistant

COORDINATING PULLOVER
229541 | 229741



Warmth **6** / 10 Weight **Mid**

DEVIATE JACKET

229539 Adult XS-3XL
229739 Ladies XS-2XL
in select colors

- Dry-Excel™ bonded polyester is a scuba bonded fabric featuring a tonal striation
- Poly/spandex storm cuffs
- Storm flap and zipper garage
- Raglan sleeves
- Front zippered pockets
- Dual inside pockets

Available in Ladies



BLACK
080

CARBON
J96

NAVY
065

Available in Ladies



WHITE
005

ROYAL
060

SCARLET
083



Back



229527

229431

229056



Warmth 6 / 10

Weight Mid

POTOMAC JACKET

229527 Adult S-3XL

- Micro-Cord™ woven polyester fabric with a raised, ribbed texture
- Micromesh lined body and sleeves
- Concealed adjustable hood with eyelets and concealed cord locks stows when not in use
- Back vent with adjustable closure for full decoration access
- Front zippered pockets
- Dual inside pockets
- Rib-knit collar and cuffs
- Open bottom with adjustable elastic hidden drawcord (on Adult)
- Dropped tail
- Coordinating pants: 229056



BLACK/
GOLD
421

BLACK/
ORANGE
423

BLACK/
SCARLET
500

DARK GREEN/
WHITE
438

MAROON/
WHITE
380



NAVY/
GOLD
302

NAVY/
SCARLET
S20

ROYAL/
WHITE
280

SCARLET/
WHITE
408



BLACK/
WHITE
420

CARBON/
WHITE
F52

NAVY/
WHITE
301



BLACK
080

CARBON
J96

NAVY
065



COORDINATING PULLOVER
6855 | 6856 | 6857

Warmth **6 / 10** Weight **Mid**

CHILL FLEECE 2.0 FULL ZIP HOODIE

6858	Adult	S-3XL
6859	Youth	XS-L
6860	Ladies	XS-2XL

- Eco-Revive product featuring 8 ounce, 70% recycled polyester/30% polyester
- Ladies' fit on style 6860
- Hanger loop label
- 3-piece hood with spandex binding
- Set-in sleeves
- Front zippered pockets with spandex binding detail
- Dual inside pockets
- Self-fabric cuffs
- Open bottom



BLACK 080 GRAPHITE 059 NAVY 065 ROYAL 060

Available in Adult & Ladies Only



SCARLET 083 DK GREEN 035 MAROON 745

Available in Adult & Ladies Only



OLIVE 039 OYSTER 53T STORM 932



P304

6893

6858



229559



6860

221398



REPREVE® ECO
COLLECTION



104C



229716



229516





Welded
Quilting

REPREVE®

Products are made with
100% post-consumer
recycled plastic bottles.



REPREVE® ECO COLLECTION

OUTERWEAR | FULL-ZIP



229513
Repreve®
Eco Vest



229713
Ladies Repreve®
Eco Vest



229516
Repreve®
Eco Jacket



229716
Ladies Repreve®
Eco Jacket



222575
Repreve®
Eco Polo



222775
Ladies Repreve®
Eco Polo



222577
Repreve®
Eco Hoodie



P203
Repreve®
Eco Cap

Warmth **5** / 10 Weight **Light**

REPREVE® ECO JACKET

229516 Adult XS-3XL
229716 Ladies XS-3XL

- 100% polyester MicroTec woven face with durable water-repellent finish to keep you dry
- Made from Repreve® 50% recycled polyester fill quilting
- Weld engineered quilting that's decoration friendly
- 78% polyester/22% spandex inserts, peached for softness
- Ladies' fit on 229716
- Front zippered pockets
- Half-elastic cuffs
- Dropped tail



BLACK
080

CARBON
J96

NAVY
065

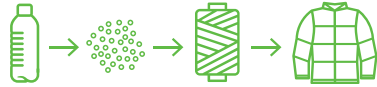
OLIVE
039

STORM
932

TUNDRA HAZE
PRINT
20M



Products are made with 100% post-consumer recycled plastic bottles.



Each of our Repreve® partnered garments features soft, sustainable fabric technology.



229007



P203

229513



V57

229713



229011

Warmth **5** / 10 Weight **Light**

REPREVE® ECO VEST

229513 Adult S-3XL
229713 Ladies XS-3XL

- 100% polyester MicroTec woven face with durable water-repellent finish to keep you dry
- Made from Repreve® 50% recycled polyester fill quilting for lightweight warmth
- Weld engineered quilting that's decoration friendly
- Ladies' fit on style 229713
- Front zipper with antique nickel zipper pull and storm flap
- Side seam pockets
- Dropped tail on Ladies' style 229713



BLACK 080 CARBON 196 NAVY 065 OLIVE 039 STORM 932 TUNDRA HAZE PRINT 20M WHITE 005



COLLECTION

CONTROL YOUR COMFORT

COORDINATING PULLOVER

229594 | 229794



Warmth **5** / 10 Weight **Mid**

3D REGULATE JACKET

229588 Adult XS-3XL

- 100% polyester heathered knit with seamless quilted insulation for added warmth
- Wik-Sof™ performance fleece lower body & hood
- 3-piece adjustable mesh lined hood
- Set-in sleeves
- Front zippered pockets
- Spandex bound cuff
- Dropped tail



BLACK
HEATHER/
BLACK
K54

NAVY
HEATHER/
NAVY
K64

ROYAL
HEATHER/
ROYAL
K66

FOREST
HEATHER/
FOREST
K95



3D seamless insulated knit traps heat to keep you warm while 3D channels release excess heat to keep you comfortable.



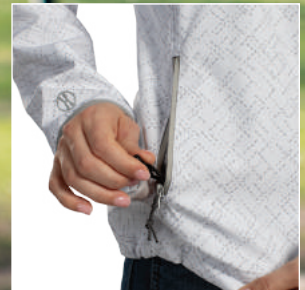
SILVER
HEATHER/
SILVER
60E

MAROON
HEATHER/
MAROON
K69



229521

229721



Adjustable Elastic Hidden Drawcord



Warmth **5** / 10 Weight **Light**

FEATHERLIGHT SOFT SHELL JACKET

229521 Adult XS-4XL

229721 Ladies XS-3XL

- Featherlight soft shell fabric is 100% bonded polyester with mechanical stretch and durable water-repellent finish
- Ladies' fit on 229721
- Raglan sleeves
- Front zippered pockets
- Dual inside pockets
- Spandex bound cuffs
- Open bottom with adjustable elastic hidden drawcord



ARCTIC HAZE PRINT 19M

BLACK 080

CARBON J96

DARK GREEN 035



MAROON 045

NAVY 065

ROYAL 060

SCARLET 083



COORDINATING
PULLOVER
6863 | 6864



Warmth **4** / 10 Weight **Mid**

MICRO-LITE FLEECE FULL ZIP JACKET

- 6861** Adult XS-3XL
4XL in select colors
- 6862** Ladies XS-2XL
3XL in select colors

- Eco-Revive product featuring 5.3 ounce, 70% recycled polyester/30% polyester
- Ladies' fit on style 6862
- Hanger loop label
- Set-in sleeves
- Side seam pockets
- Open bottom

Available in Adult 4XL & Ladies 3XL



BLACK 080 GRAPHITE 059 NAVY 065 OYSTER 53T

Available in Adult 4XL & Ladies 3XL



ROYAL 060 SCARLET 083



ATHLETIC GREY 009 DK GREEN 035 MAROON 745 STORM 932

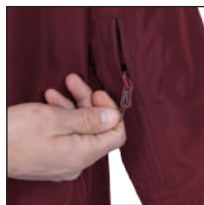


6862

6861



P303



Zippered pocket on wearer's left sleeve



Hidden drawcord at waist on Ladies



Jacket folds up into zippered pocket

Back vent with decoration access

229582



229559

223815



229782



221398



Warmth **4** / 10 Weight **Light**

PACKABLE FULL ZIP JACKET

229582 Adult S-4XL
229782 Ladies XS-3XL

- Micron™ polyester is a lightweight, wind/water-resistant fabric
- Ladies' fit on style 229782
- Adjustable hood with inside concealed cord locks
- Reflective trim
- Back vent with adjustable closure for full decoration access
- Set-in sleeves
- Front zippered pockets
- Spandex bound cuffs
- Open bottom
- Adjustable elastic hidden drawcord at bottom hem (Adult only)



ATHLETIC GREY 009 BLACK 080 CARBON 196 DARK GREEN 035



MAROON 745 NAVY 065 PURPLE 747

Available in Adult Only



ROYAL 060 SCARLET 083 OLIVE 039



Snap Front



Warmth 7 / 10

Weight Heavy

HERITAGE JACKET

229140 Adult S-4XL
5XL in select colors

- Duraweav™ fabric has a smooth oxford nylon surface
- Quilted nylon lining
- 15mm matte painted enamel snap front
- Set-in sleeves
- Front pockets
- Inside valuables pocket
- Rib-trim collar, cuffs, and bottom hem

Available in 4XL-5XL



BLACK/WHITE 420

NAVY/WHITE 301

ROYAL/WHITE 280

SCARLET/WHITE 408

BLACK 080

NAVY 065



BLACK/LT GOLD/WHITE R21

BLACK/SCARLET/WHITE R20

DARK GREEN/LT GOLD/WHITE S06

MAROON/WHITE 380

BLACK/ORANGE/WHITE 611

NAVY/LT GOLD/WHITE S30



Warmth 5 / 10

Weight Mid

SATIN BASEBALL JACKET/STRIPED TRIM

3610 Adult XS-3XL

- Outer shell of 100% nylon satin
- Lined with 100% polyester brushed tricot
- Raglan sleeves
- Front pockets
- Rib-knit collar, cuffs and bottom



COLUMBIA BLUE/WHITE 293

LIGHT PINK/WHITE 465

METALLIC GOLD/WHITE 259

METALLIC SILVER/WHITE 260



BLACK/WHITE 420

RED/WHITE 400

ROYAL/WHITE 280

NAVY/WHITE 301



P207



Warmth **5** / 10

Weight **Light**

HOODED COACH'S JACKET

3102 Adult S-3XL

- Outer shell of 100% nylon taffeta
- Lined with 100% polyester brushed tricot
- Tear away label
- Hood with drawcord
- Raglan sleeves
- Front pockets
- Elastic cuffs



GOLD
025

BLACK
080

DARK
GREEN
035



MAROON
045

NAVY
065

RED
040



ROYAL
060

WHITE
005





Warmth **5** / 10 Weight **Light**

NYLON COACH'S JACKET/LINED

3100 Adult S-3XL
4XL & 5XL in select colors

3101 Youth XS-L

- Outer shell of 100% nylon taffeta
- Lined with 100% polyester brushed tricot
- Tear away label
- Raglan sleeves
- Front pockets
- Elastic cuff

Available in Adult
S-3XL & Youth



OLIVE DRAB GREEN
179

Available in Adult
S-5XL & Youth



BLACK
080

NAVY
065

Available in Adult S-3XL



MAROON
045

RED
040

ROYAL
060

DARK GREEN
035



KELLY
030

WHITE
005

BROWN
079

GRAPHITE
059

KHAKI
010



POWER PINK
809

COLUMBIA BLUE
089

ORANGE
029

GOLD
025

PURPLE
050

LIGHT PINK
095





229728



229731

229528



229432

229531

Embossed
Pattern Inset

COORDINATING
PULLOVER

229533 | 229633 | 229733

COORDINATING
JACKET

223528 | 223628 | 223728



Ladies Fit

Warmth **5 / 10** Weight **Light**

SERIESX HOODED JACKET



229528 Adult S-3XL
229628 Youth S-XL
229728 Ladies XS-2XL

- Micron™ polyester is a lightweight, wind/water-resistant fabric
- 100% polyester micromesh lining
- Ladies' fit on 229728
- 3-piece hood with spandex binding
- Set-in sleeves
- Front zippered pockets
- Elastic cuffs
- Adjustable bottom hem with hidden shockcord closure in right pocket on Adult
- Alternate pants: 229095



BLACK/WHITE 420 CARBON/WHITE F52 NAVY/WHITE 301 BLACK/ORANGE 423 BLACK/SCARLET 500 DARK GREEN/WHITE 438 MAROON/WHITE 380 NAVY/SCARLET S20 ROYAL/WHITE 280 SCARLET/WHITE 408



Ladies Fit

Zipper on
Outside
Lower Leg

Warmth **5 / 10** Weight **Light**

SERIESX PANT



229531 Adult S-3XL
229631 Youth S-XL
229731 Ladies XS-2XL

- Micron™ polyester is a lightweight, wind/water-resistant fabric
- 100% polyester micromesh lining
- Ladies' fit on 229731
- Exposed brushed elastic waistband with inside drawcord
- Side seam pockets
- Tapered leg
- Articulated seaming at the knees
- Covered elastic cuff at leg opening
- Zipper on outside lower leg



BLACK 080 CARBON 996 NAVY 065 BLACK/WHITE 420 ROYAL/WHITE 280 SCARLET/WHITE 408 DARK GREEN/WHITE 438 MAROON/WHITE 380



Back Welt Pocket



Warmth 5 / 10

Weight Light

RETRO GRADE JACKET

- 229561 Adult S-3XL
- 229661 Youth S-XL
- 229761 Ladies XS-2XL

- Dry-Excel™ 100% polyester performance terry
- Ladies' fit on style 229761
- 3-piece mesh lined hood with spandex binding
- Raglan sleeves
- Front pockets
- Spandex bound cuff



Ladies Fit

Available in Adult & Ladies Only



Warmth 5 / 10

Weight Light

RETRO GRADE PANT

- 229562 Adult S-3XL
- 229662 Youth S-XL
- 229762 Ladies XS-2XL

- Dry-Excel™ 100% polyester performance terry
- Ladies' fit on style 229762
- Exposed brushed elastic waistband with inside drawcord
- Front pockets
- Back welt pocket
- Tapered leg



Zipper on Outside Lower Leg

Ladies Fit

Available in Adult & Ladies Only



229561



229562



Back

229761

MORE FROM THE RETRO COLLECTION

229762



224076 | 224276
224077 | 224277
224376 | 224377
Retro Basketball Uniform



221021 | 221221
Retro Baseball Jersey

Warmth **5** / 10

Weight **Light**

LIMITLESS JACKET



- 229579** Adult S-3XL
- 229679** Youth S-XL
- 229779** Ladies XS-2XL

- Dry-Excel™ 100% polyester wicking double knit with mesh texture
- Ladies' fit on 229779
- Raglan sleeves
- Front zippered pockets



BLACK/WHITE 420 NAVY/WHITE 301 CARBON/WHITE F52 ROYAL/WHITE 280 SCARLET/WHITE 408



BLACK/BLACK 425 MAROON/WHITE 380 DARK GREEN/WHITE 438 BLACK/WHITE/GOLD 532 NAVY/WHITE/GOLD W57



BLACK/WHITE/ORANGE W12 BLACK/WHITE/SCARLET C39 NAVY/WHITE/SCARLET W53

Warmth **5** / 10

Weight **Light**

LIMITLESS PANT



- 229580** Adult S-3XL
- 229680** Youth S-XL
- 229780** Ladies XS-2XL

- Dry-Excel™ 100% polyester wicking double knit mesh texture
- Pinhole micromesh back knee inserts
- Ladies' fit on 229780
- Covered elastic waistband with inside drawcord
- Side seam pockets
- Tapered leg
- Zipper on outside lower leg



BLACK/BLACK 425 BLACK/WHITE 420 CARBON/WHITE F52 NAVY/WHITE 301 ROYAL/WHITE 280 SCARLET/WHITE 408

Available in Adult & Ladies Only



DARK GREEN/WHITE 438 MAROON/WHITE 380



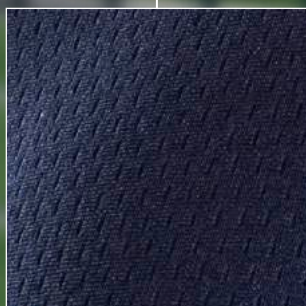
COORDINATING HOODIE

222584





229007



Mesh



Zippered leg





COORDINATING PULLOVER

4386 | 4388

Warmth **5** / 10 Weight **Light**

MEDALIST JACKET 2.0

4395 Adult S-3XL
4396 Youth XS-L
4397 Ladies XS-2XL

- Heavyweight 100% polyester matte brushed tricot
- Ladies' fit on style 4397
- Heat sealed label
- Set-in sleeves
- Front seam pockets
- Alternate pants 7726/7728, 7731/7732/7733



BLACK/ GOLD 421 BLACK/ ORANGE 423 BLACK/ RED 424 BLACK/ VEGAS GOLD 255 BLACK/ WHITE 420 DARK GREEN/ WHITE 438 GRAPHITE/ WHITE R04



KELLY/ WHITE 340 MAROON/ WHITE 380 NAVY/ VEGAS GOLD 256 NAVY/ WHITE 301 PURPLE/ WHITE 450 RED/ WHITE 400 ROYAL/ WHITE 280

Warmth **5** / 10 Weight **Light**

MEDALIST PANT 2.0

7760 Adult S-3XL
7761 Youth XS-L
7762 Ladies XS-2XL

- Heavyweight 100% polyester matte brushed tricot
- Ladies' fit on style 7762
- Heat sealed label
- Covered elastic waistband with inside drawcord
- Side seam pockets
- Zipper on outside lower leg



BLACK/ GOLD 421 BLACK/ ORANGE 423 BLACK/ RED 424 BLACK/ WHITE 420 DARK GREEN/ WHITE 438 GRAPHITE/ WHITE R04 KELLY/ WHITE 340



MAROON/ WHITE 380 NAVY/ VEGAS GOLD 256 NAVY/ WHITE 301 PURPLE/ WHITE 450 RED/ WHITE 400 ROYAL/ WHITE 280 BLACK/ VEGAS GOLD 255

Available in Adult & Ladies only



4395

4397

7762

7760



Back Yoke



Reflective Zipper Pull

Template X3

Reflective Accent



COORDINATING PULLOVER
229596



Warmth 3/10

Weight Light



Dropped Tail

WELD FULL ZIP JACKET

229543 Adult XS-3XL

- 90% polyester/10% spandex
- Zippered sleeve pocket with media port
- Raglan sleeves
- Locking front and dual inside pockets
- Spandex bound cuff
- Open bottom with adjustable elastic hidden drawcord
- Alternate pants: 229559/229799



BLACK/
WHITE
420

CARBON/
WHITE
F52

FOREST/
WHITE
436

KELLY/
WHITE
340

MAROON/
WHITE
380



NAVY/
WHITE
301

ORANGE/
WHITE
320

ROYAL/
WHITE
280

SCARLET/
WHITE
408

WHITE/
CARBON
E94



Warmth 3/10

Weight Light

WELD PANT

229544 Adult XS-3XL

- 90% polyester/10% spandex
- Covered elastic waistband with inside drawcord
- Side seam pockets
- Zipper on outside of lower leg
- Straight leg



BLACK/
WHITE
420

CARBON/
WHITE
F52

NAVY/
WHITE
301



WELD
COLLECTION



Pleated Back Detailing



Thumbhole

Reflective
Accent Around
Front Zipper



Covered
Elastic Cuff



Warmth **3** / 10 Weight **Light**

LADIES WELD JACKET

229743 Ladies XS-2XL

- 90% polyester/10% spandex
- Low profile collar
- Raglan sleeves
- Locking welt front pockets
- Dual inside pockets
- Elastic cuffs and bottom



Warmth **3** / 10 Weight **Light**

LADIES WELD JOGGER

229799 Ladies XS-2XL

- 90% polyester/10% spandex
- Covered elastic waistband with outside drawcord and silicone dipped tips (inside drawcord on XS-S)
- Front pockets
- Covered elastic cuff at leg opening
- Tapered leg
- Coordinating Adult 229559





223846



Back

Thumbhole



Designed to fit over knee pads



Warmth **3** / 10 Weight **Mid**

LADIES FREE FORM JACKET

371262 Ladies S-3XL
371263 Girls S-XL

- 78% polyester/22% spandex heavyweight knit
- 90% polyester/10% spandex heather fabric inserts
- Partial storm flap and zipper garage
- Set-in sleeves
- Front zippered pockets
- Dual inside pockets
- Thumbholes
- Dropped tail



ROYAL/
CARBON
HEATHER
H73 SCARLET/
CARBON
HEATHER
H72 NAVY/
CARBON
HEATHER
H71 BLACK/
CARBON
HEATHER
H70 CARBON/
CARBON
HEATHER
09M



Warmth **3** / 10 Weight **Mid**

LADIES FREE FORM PANT

371562 Ladies S-3XL
Tall ST-XLT
371563 Girls S-XL

- 78% polyester/22% spandex heavyweight knit
- 90% polyester/10% spandex heather fabric inserts
- High waisted, covered waistband
- Front pockets
- Zipper on outside lower leg
- Tapered leg
- Designed to be worn over knee pads



NAVY/
CARBON
HEATHER
H71 BLACK/
CARBON
HEATHER
H70 BLACK/
BLACK
425 CARBON/
CARBON
HEATHER
09M



COORDINATING BAG

327895
Free Form Backpack



Decoration Available on PVC



Air mesh vented back for breathability



Detachable Hood with Drawcord on Adult



Warmth **2** / 10

Weight **Light**

CLEAR RAIN JACKET

3160 Adult S-2XL

3161 Youth S-L

- 100% PVC
- Unisex fit
- Front zipper with outside storm flap and snaps
- Raglan sleeves
- Front pockets with flaps and snap closure
- Open bottom



CLEAR 100



Side Seam Pockets

Warmth **5** / 10

Weight **Light**

TAPERED LEG PANT

7731 Adult XS-3XL

7732 Youth S-L

7733 Ladies XS-2XL

- Heavyweight 100% polyester matte brushed tricot
- Covered elastic waistband with inside drawcord
- Tapered fit
- Back yoke
- Zipper on outside lower leg

Available in [Adult only] Available in [Ladies only]



RED 040



ROYAL 060



BLACK 080



NAVY 065

Ladies Fit



Side Seam Pockets

Warmth **5** / 10

Weight **Light**

SOLID BRUSHED TRICOT PANT

7726 Adult S-3XL

7728 Ladies S-2XL

- Heavyweight 100% polyester matte brushed tricot
- Covered elastic waistband with inside drawcord
- Back yoke
- Zipper on outside lower leg



BLACK 080

Ladies Fit