



BAUER  
TEAM UNITY '23//

  
BAUER

## WHAT IS TEAM UNITY?

Bauer has developed a program that is committed to outfitting individual teams and associations both on and off the ice to create a unified look. By providing a one-stop solution, this program is now easily accessible to all levels and age groups looking to build their identity and elevate their game.



## CONTENTS

TEAM APPAREL.....	3
PANTS.....	11
GLOVES .....	17
HELMETS .....	23
BAGS.....	29
GOAL .....	33
UNIFORMS .....	38
TEAM STICK.....	41
ADDITIONAL INFORMATION.....	42

**BAUER**

BAUER  
APPAREL '23// **BAUER**

## BAUER HOCKEY HOODED PUFFER JACKET

COLOR	SR MATERIAL #	SR SIZES	YTH MATERIAL #	YTH SIZES
Black	[1056842]	XS, S, M, L, XL, XXL	[1056844]	XXS, XS, S, M, L, XL
Navy	[1057798]	XS, S, M, L, XL, XXL	[1057799]	XXS, XS, S, M, L, XL

### FEATURES AND TECHNOLOGY

Fabric Content	100% Nylon, Lining/Fill: 100% Polyester
Fit	Tapered hockey fit
Features	BAUER silicone patch on wearer's left sleeve, Screen printed logo on wearer's right chest PrimaLoft® insulation High-quality YKK® zippers
Customization	Can be post embellished



## S22 BAUER SAIL RACING TRAVEL COAT

COLOR	SR MATERIAL #	SR SIZES
Gray	[1060214]	XS, S, M, L, XL, XXL

### FEATURES AND TECHNOLOGY

Fabric Content	94% Polyester/6% Spandex
Fit	Tapered hockey fit
Features	Water resistant Primaloft Black Eco fill, 60g Insulation Embossed logo on sleeve Heavy duty logo locker loop at inside neck 3 piece hood, inner storm cuff and vent at back hem
Customization	Can be post embellished



## S23 BAUER HOCKEY TEAM PUFFER VEST

COLOR	SR MATERIAL #	SR SIZES
Black	[1061015]	XS, S, M, L, XL, XXL
Navy	[1060747]	XS, S, M, L, XL, XXL

### FEATURES AND TECHNOLOGY

Fabric Content	100% Polyester
Fit	Tapered hockey fit
Features	Primaloft® Black insulation RISE 200g, 100% post-consumer recycled content YKK® zippers at center front opening and front pockets <i>Locker loop at inside back neck</i> <i>Shockcord and cordlock adjusters at inside hem</i>
Customization	Can be post embellished



## S23 BAUER TEAM WOVEN JOGGER

COLOR	SR MATERIAL #	SR SIZES	YTH MATERIAL #	YTH SIZES
Black	[1060778]	XS, S, M, L, XL, XXL	[1060806]	XXS, XS, S, M, L, XL
Navy	[1060779]	XS, S, M, L, XL, XXL	[1060805]	XXS, XS, S, M, L, XL

### FEATURES AND TECHNOLOGY

Fabric Content	90% Polyester / 10% Spandex
Fit	Tapered hockey fit
Features	Stretch Woven Fabric Rib cuffs Slash pockets with additional hidden YKK® zipper pocket at right hip Encased elastic waistband with adjustable drawcord Logo on right hip
Customization	Can be post embellished



## BAUER HOCKEY LIGHTWEIGHT JACKET

COLOR	SR MATERIAL #	SR SIZES	YTH MATERIAL #	YTH SIZES
Black	[1056586]	XS, S, M, L, XL, XXL, XXXL	[1056589]	XXS, XS, S, M, L, XL
Grey	[1056535]	XS, S, M, L, XL, XXL, XXXL	[1056511]	XXS, XS, S, M, L, XL
Navy	[1056587]	XS, S, M, L, XL, XXL, XXXL	[1056537]	XXS, XS, S, M, L, XL

### FEATURES AND TECHNOLOGY

Fabric Content	100% Polyester Water Resistant
Fit	Tapered hockey fit
Features	BAUER screen printed logo on left sleeve, right chest, and back neck High-quality YKK® zippers and mesh venting on back On seam and right chest pockets Raglan sleeve with adjustable cuff
Customization	Can be post embellished



## BAUER LIGHTWEIGHT PANT

COLOR	SR MATERIAL #	SR SIZES	YTH MATERIAL #	YTH SIZES
Black	[1056699]	XS, S, M, L, XL, XXL	[1056680]	XXS, XS, S, M, L, XL
Grey	[1056679]	XS, S, M, L, XL, XXL	[1056712]	XXS, XS, S, M, L, XL
Navy	[1056678]	XS, S, M, L, XL, XXL	[1056711]	XXS, XS, S, M, L, XL

### FEATURES AND TECHNOLOGY

Fabric Content	100% Polyester Water Resistant
Fit	Tapered hockey fit
Features	BAUER screen-printed logo on left lower leg and right thigh On seam pockets with zippers and security pocket on right thigh Adjustable draw-cord waist
Customization	Can be post embellished



## BAUER HOCKEY MIDWEIGHT JACKET

COLOR	SR MATERIAL #	SR SIZES	YTH MATERIAL #	YTH SIZES
Black	[1056512]	XS, S, M, L, XL, XXL	[1056672]	XXS, XS, S, M, L, XL
Navy	[1056513]	XS, S, M, L, XL, XXL	[1056673]	XXS, XS, S, M, L, XL
Grey	[1056514]	XS, S, M, L, XL, XXL	[1056674]	XXS, XS, S, M, L, XL

### FEATURES AND TECHNOLOGY

Fabric Content	100% Polyester Water Resistant
Fit	Tapered hockey fit
Features	BAUER screen-printed logo on left sleeve, right chest, and back neck High-quality YKK® zippers and fleece lining On seam and right chest pockets Adjustable sleeve cuffs
Customization	Can be post embellished



## BAUER HOCKEY HEAVYWEIGHT JACKET

COLOR	SR MATERIAL #	SR SIZES	YTH MATERIAL #	YTH SIZES
Black	[1056704]	XS, S, M, L, XL, XXL	[1056706]	XXS, XS, S, M, L, XL
Navy	[1056707]	XS, S, M, L, XL, XXL	[1056671]	XXS, XS, S, M, L, XL

### FEATURES AND TECHNOLOGY

Fabric Content	100% Polyester Water Resistant
Fit	Tapered hockey fit
Features	BAUER screen-printed logo on left sleeve and right chest High-quality YKK® zippers and polyester insulation On seam and right chest pockets Raglan sleeve with adjustable cuff and zip off removable hood
Customization	Can be post embellished



## BAUER TEAM FLEECE 1/2 ZIP

COLOR	SR MATERIAL #	SR SIZES
Black	[1060772]	XS, S, M, L, XL, XXL
Navy	[1060774]	XS, S, M, L, XL, XXL
Grey	[1060773]	XS, S, M, L, XL, XXL
Red	[1061014]	XS, S, M, L, XL, XXL

### FEATURES AND TECHNOLOGY

Fabric Content	100% Polyester
Fit	Tapered hockey fit
Features	Tech Fleece Fabric High-quality YKK® zippers Kangaroo pocket with additional zipper pocket Logos on shoulder and sleeve Logo tape locker loop
Customization	Can be post embellished



## BAUER TEAM FLEECE ZIP HOODIE

COLOR	SR MATERIAL #	SR SIZES	YTH MATERIAL #	YTH SIZES
Black	[1060780]	XS, S, M, L, XL, XXL	[1060807]	XXS, XS, S, M, L, XL
Navy	[1060781]	XS, S, M, L, XL, XXL	[1060808]	XXS, XS, S, M, L, XL
Grey	[1060782]	XS, S, M, L, XL, XXL	[1060809]	XXS, XS, S, M, L, XL
Red	[1060783]	XS, S, M, L, XL, XXL	[1060810]	XXS, XS, S, M, L, XL

### FEATURES AND TECHNOLOGY

Fabric Content	100% Polyester
Fit	Tapered hockey fit
Features	Tech Fleece Fabric Lined hood Kangaroo pocket with additional YKK® zipper pocket at right Logo on shoulder and back hem Logo tape locker loop
Customization	Can be post embellished



## BAUER TEAM FLEECE JOGGER

COLOR	SR MATERIAL #	SR SIZES	YTH MATERIAL #	YTH SIZES
Black	[1060775]	XS, S, M, L, XL, XXL	[1060802]	XXS, XS, S, M, L, XL
Navy	[1060777]	XS, S, M, L, XL, XXL	[1060803]	XXS, XS, S, M, L, XL
Grey	[1060776]	XS, S, M, L, XL, XXL	[1060804]	XXS, XS, S, M, L, XL

### FEATURES AND TECHNOLOGY

Fabric Content	100% Polyester
Fit	Tapered hockey fit
Features	Tech Fleece Fabric Slash pockets with additional YKK® zipper pocket at right hip Encased elastic waistband with adjustable drawcord Logo on right leg
Customization	Can be post embellished



## BAUER ULTIMATE HOODIE

COLOR	SR MATERIAL #	SR SIZES	YTH MATERIAL #	YTH SIZES
Black	[1060730]	XS, S, M, L, XL, XXL	[1060811]	XXS, XS, S, M, L, XL
Navy	[1060770]	XS, S, M, L, XL, XXL	[1060814]	XXS, XS, S, M, L, XL
Heather Grey	[1060768]	XS, S, M, L, XL, XXL	[1060813]	XXS, XS, S, M, L, XL
Red	[1060771]	XS, S, M, L, XL, XXL	[1060815]	XXS, XS, S, M, L, XL

### FEATURES AND TECHNOLOGY

Fabric Content	85% Cotton / 15% Polyester
Fit	Retro fit
Features	Brushed Back Fleece Lined hood with drawcord and cordlock adjuster Rib cuffs and bottom band Logo on shoulder Kangaroo pocket Logo tape locker loop
Customization	Can be post embellished



## BAUER TEAM PIQUE POLO

COLOR	SR MATERIAL #	SR SIZES	YTH MATERIAL #	YTH SIZES
Black	[1059157]	XS, S, M, L, XL, XXL	[1059161]	XXS, XS, S, M, L, XL
Grey	[1059158]	XS, S, M, L, XL, XXL	[1059162]	XXS, XS, S, M, L, XL
Navy	[1059159]	XS, S, M, L, XL, XXL	[1059163]	XXS, XS, S, M, L, XL

### FEATURES AND TECHNOLOGY

Fabric Content	100% Polyester Water Resistant
Fit	Tapered hockey fit
Features	BAUER heat transfer logo at wearer's left sleeve hem BAUER screen printed neck tape with integrated locker loop Tagless back neck label Side seam vents
Customization	Can be post embellished



## BAUER VAPOR TEAM LS TECH TEE

COLOR	SR MATERIAL #	SR SIZES	YTH MATERIAL #	YTH SIZES
Heather Grey	[1058610]	XS, S, M, L, XL, XXL	[1058611]	XXS, XS, S, M, L, XL

### FEATURES AND TECHNOLOGY

Fabric Content	100% Polyester
Fit	Tapered hockey fit
Features	BAUER heat transfer logo at wearer's left shoulder Small graphic detail at back body Tagless back neck label Forward shifted seams at shoulders and sides
Customization	Can be post embellished



## BAUER VAPOR TEAM TECH TEE

COLOR	SR MATERIAL #	SR SIZES	YTH MATERIAL #	YTH SIZES
Black	[1056793]	XS, S, M, L, XL, XXL	[1056815]	XXS, XS, S, M, L, XL
Heather Grey	[1056795]	XS, S, M, L, XL, XXL	[1056817]	XXS, XS, S, M, L, XL
Navy	[1056808]	XS, S, M, L, XL, XXL	[1056816]	XXS, XS, S, M, L, XL
Heather Red	[1056812]	XS, S, M, L, XL, XXL	[1056819]	XXS, XS, S, M, L, XL

### FEATURES AND TECHNOLOGY

Fabric Content	100% Polyester
Fit	Tapered hockey fit
Features	BAUER screen-printed logo on left sleeve Small graphic detail on back body Moisture wicking
Customization	Can be post embellished



## BAUER CORE ATHLETIC SHORT

COLOR	SR MATERIAL #	SR SIZES	YTH MATERIAL #	YTH SIZES
Black	[1053476]	XS, S, M, L, XL	[1053477]	XS, S, M, L
Navy	[1054882]	XS, S, M, L, XL	[1054883]	XS, S, M, L

### FEATURES AND TECHNOLOGY

Fabric Content	100% Polyester
Fit	Tapered hockey fit
Features	On-seam pockets Can be embellished
Customization	Can be post embellished



## BAUER HOCKEY HOODED PUFFER - WMN

COLOR	WMN MATERIAL #	SR SIZES
Black	[1057009]	XXS, XS, S, M, L, XL

### FEATURES AND TECHNOLOGY

Fabric Content	100% Nylon
Fit	Hockey fit
Features	High quality YKK® Vislon® and coil zippers PrimaLoft® Insulation Zippered inside chest pocket Rib knit storm cuff on sleeve
Customization	Post embellishment access zipper



## BAUER VAPOR FLEECE HOODIE - WMN

COLOR	WMN MATERIAL #	SR SIZES
Black	[1056962]	XXS, XS, S, M, L, XL

### FEATURES AND TECHNOLOGY

Fabric Content	100% Polyester
Fit	Hockey fit
Features	BAUER screen printed logo at wearer's right chest BAUER screen printed logo at wearer's left sleeve On seam kangaroo pocket with TPU bartacks BAUER screen printed neck tape with integrated locker loop
Customization	Can be post embellished



## BAUER VAPOR FLEECE JOGGER PANT - WMN

COLOR	WMN MATERIAL #	SR SIZES
Black	[1056951]	XXS, XS, S, M, L, XL

### FEATURES AND TECHNOLOGY

Fabric Content	100% Polyester
Fit	Hockey fit
Features	BAUER heat transfer logo at wearer's right thigh Angled pockets with hidden YKK® zipper pocket on wearer's right Adjustable drawcord waist TPU bartacks
Customization	Can be post embellished



## BAUER VAPOR TEAM TECH TEE - WMN

COLOR	WMN MATERIAL #	SR SIZES
Heather Grey	[1056942]	XXS, XS, S, M, L, XL

### FEATURES AND TECHNOLOGY

Fabric Content	100% Polyester
Fit	Hockey fit
Features	BAUER heat transfer logo at wearer's left chest Tagless back neck label
Customization	Can be post embellished





# APPAREL SIZING CHARTS

## MEN (Measurements in US Standard & Metric)

SIZE		XXS	XS	S	M	L	XL	XXL	XXXL
CHEST	[IN]	-	35" - 36"	37" - 38"	39" - 40"	41" - 43"	44" - 46"	47" - 49"	50" - 53"
	[CM]	-	89 - 91	94 - 97	99 - 102	104 - 109	112 - 117	119 - 125	127 - 135
WAIST	[IN]	-	27" - 28"	29" - 30"	31" - 33"	34" - 35"	36" - 37"	38" - 40"	41" - 44"
	[CM]	-	69 - 71	74 - 76	79 - 84	86 - 89	91 - 94	97 - 102	104 - 112
SEAT	[IN]	-	34" - 35"	36" - 37"	38" - 39"	41" - 42"	43" - 44"	45" - 47"	48" - 51"
	[CM]	-	86 - 89	91 - 94	97 - 99	104 - 107	109 - 112	114 - 119	122 - 130
HEIGHT	[IN]	-	5'1" - 5'5"	5'5" - 5'9"	5'9" - 5'11"	5'11" - 6'1"	6'1" - 6'3"	6'3" - 6'5"	6'4" - 6'6"
	[CM]	-	155 - 165	165 - 175	175 - 180	180 - 185	185 - 191	191 - 196	193 - 198

## WOMEN (Measurements in US Standard & Metric)

SIZE		XXS	XS (2)	S (4 - 6)	M (8 - 10)	L (12 - 14)	XL (16 - 18)	XXL	XXXL
CHEST	[IN]	28" - 30"	30" - 32"	32" - 34"	35" - 37"	38" - 40"	41" - 43"	-	-
	[CM]	71 - 76	76 - 81	81 - 86	89 - 94	97 - 102	104 - 109	-	-
WAIST	[IN]	21" - 23"	23" - 25"	25" - 26"	27" - 29"	30" - 32"	33" - 35"	-	-
	[CM]	53 - 58	58 - 64	64 - 66	69 - 74	76 - 81	84 - 89	-	-
SEAT	[IN]	31" - 33"	33" - 35"	35" - 37"	37" - 39"	40" - 42"	43" - 45"	-	-
	[CM]	79 - 84	84 - 89	89 - 94	94 - 99	102 - 107	109 - 114	-	-
HEIGHT	[IN]	4'10" - 5'2"	5' - 5'4"	5'1" - 5'5"	5'2" - 5'6"	5'3" - 5'7"	5'4" - 5'8"	-	-
	[CM]	147 - 158	152 - 163	155 - 165	157 - 168	160 - 170	163 - 173	-	-

## YOUTH (Measurements in US Standard & Metric)

SIZE		XXS (4)	XS (5 - 6)	S (7 - 8)	M (10 - 12)	L (14 - 16)	XL (18)	XXL	XXXL
CHEST	[IN]	22" - 23"	24" - 26"	26" - 29"	29" - 32"	32" - 34.5"	34.5" - 35.5"	-	-
	[CM]	56 - 58	61 - 66	66 - 74	74 - 81	81 - 88	88 - 90	-	-
WAIST	[IN]	21" - 22"	22.5" - 23.5"	23.5" - 24.5"	24.5" - 25.5"	25.5" - 27.5"	27.5" - 29.5"	-	-
	[CM]	53 - 56	57 - 60	60 - 62	62 - 65	65 - 70	70 - 75	-	-
SEAT	[IN]	23" - 24"	24.5" - 25.5"	26.5" - 28.5"	28.5" - 30.5"	30.5" - 33.5"	33.5" - 35.5"	-	-
	[CM]	58 - 61	62 - 65	67 - 72	72 - 78	78 - 85	85 - 90	-	-
HEIGHT	[IN]	3'3" - 3'8"	3' 9" - 4'2"	4'2" - 4'7"	4'7" - 4'11"	4'11" - 5'4"	5'4" - 5'6"	-	-
	[CM]	99 - 112	114 - 127	127 - 140	127 - 140	150 - 163	163 - 168	-	-

# NEW ERA HEADWEAR SIZING CHART

## SENIOR (Measurements in US Standard & Metric)

FITTED	6 7/8	7	7 1/8	7 1/4	7 3/8	7 1/2	7 5/8	7 3/4	7 7/8	8	8 1/8
[IN]	21 5/8	22	22 3/8	23 1/8	23 1/2	23 7/8	24 1/4	24 5/8	7 7/8	25	25 3/8
[CM]	54.9	55.8	56.8	57.7	58.7	59.6	60.6	61.5	62.5	63.5	64.5

## YOUTH (Measurements in US Standard & Metric)

FITTED	6	6 1/8	6 1/4	6 3/8	6 1/2	6 5/8	6 3/4	6 7/8	7
[IN]	19	19 3/8	19 3/4	20 1/8	20 1/2	20 7/8	21 1/4	21 5/8	22
[CM]	48.2	49.2	50.1	51.1	52	53	53.9	54.9	55.8



## BAUER NE TEAM 9FORTY ADJUSTABLE CAP

COLOR	SR MATERIAL #	SR SIZES	YTH MATERIAL #	YTH SIZES
Black	[1057023]	OSFM	[1057040]	OSFM
Grey	[1057042]	OSFM	[1057035]	OSFM
Navy	[1057045]	OSFM	[1057039]	OSFM
Red	[1057044]	OSFM	[1057037]	OSFM

### FEATURES AND TECHNOLOGY

Fabric Content	100% Polyester; Grey = 85% Acrylic / 12% Wool / 3% Spandex [Front], 100% Polyester
Fit	New Era® 9Forty® adjustable cap
Features	BAUER flat embroidery on visor New Era® embroidery on left side
Customization	Can be post embellished



## BAUER NE TEAM KNIT TOQUE

COLOR	SR MATERIAL #	SR SIZES
Black	[1057033]	OSFM
Charcoal	[1057015]	OSFM
Navy	[1057032]	OSFM
Maroon	[1057021]	OSFM

### FEATURES AND TECHNOLOGY

Fabric Content	100% Acrylic
Fit	New Era® cuffed toque
Features	BAUER flat embroidery on visor New Era® embroidery on left side Fleece lined
Customization	Can be post embellished



## BAUER NE TEAM MARL POM KNIT

COLOR	SR MATERIAL #	SR SIZES
Charcoal/Black	[1057011]	OSFM
Heather Grey/Navy	[1057014]	OSFM
Heather Grey/Red	[1057016]	OSFM
Heather Grey/Blue	[1057017]	OSFM
Heather Grey/Gold	[1057018]	OSFM
Heather Grey/Green	[1057019]	OSFM
Heather Grey/Orange	[1057020]	OSFM

### FEATURES AND TECHNOLOGY

Fabric Content	100% Acrylic
Fit	New Era® cuffed pom knit
Features	BAUER flat embroidery on visor New Era® embroidery on left side
Customization	Can be post embellished





BAUER  
PANTS 2311  **BAUER**

## S21 SUPREME 3S PRO PANT

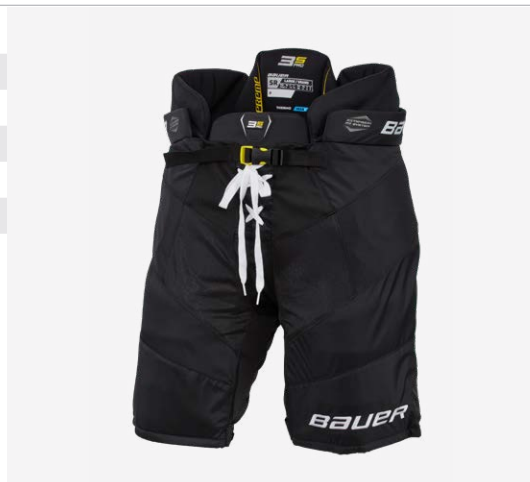
SENIOR  
INTERMEDIATE  
JUNIOR

[1058592]  
[1058604]  
[1058576]

M, L, XL  
M, L  
S, M, L

### FEATURES AND TECHNOLOGY

Level	Performance
Spine	Independent spine with Vent Armor foam
Kidney	One-piece with Flex Forward break
Hip	Classic fir one-piece hip guard
Thigh Guard	Molded PE and HD foam, removable for post embellishment
Belt	Wrap around belt with side release buckle
Key Upgrades	840D nylon, enhance protection: kidney, hip thigh, FlexForward kidney break



## CUSTOM NEXUS ELITE PANT

SENIOR  
SENIOR DS

[1043702]  
[1043783]

S, M, L, XL, XXL  
S, M, L, XL, XXL

### FEATURES AND TECHNOLOGY

Construction	Volume fit, pro level protection and quality Custom logo and stripes included in price.
Colors	Custom color menu
Embellishments	Direct Embroidered Bauer logo Embroidered Patch Team logo

MINIMUM OF 12 UNITS PER PANT / SHELL TYPE  
DIRECT SHIP ITEMS: RUSH 60 DAYS



## DS RT BAUER SPEED PANT 2.0

SENIOR  
JUNIOR  
YOUTH

[1060738]  
[1060739]  
[1060740]

S, ST, M, MT, L, LT, XL,  
XLT, XXL, XXLT  
S, M, L, XL  
S, M, L

### FEATURES AND TECHNOLOGY

Fit	Anatomical Fit
Spine	Integrated spine with HDPE insert
Kidney	Segmented kidney vs 1-piece molded
Hip	Full volume barrel fit with HDPE protection
Thigh Guard	Segmented with 1" more coverage vs 1-piece
Belt	Wrap around belt with cinching closure
Adjustability	Extension Fit + 1" through button adjustment
Shell	Pro level 850D Nylon with overlay and stretch zone
Liner	THERMO Max liner
Color	Custom Colors

MINIMUM OF 12 UNITS PER PANT / SHELL TYPE  
DIRECT SHIP ITEMS: RUSH 60 DAYS



## CUSTOM NEXUS PERF PANT - WMNS

WOMENS  
WOMENS DS

[1043788]  
[1043789]

S, M, L, XL  
S, M, L, XL

### FEATURES AND TECHNOLOGY

MINIMUM OF 12 UNITS PER PANT / SHELL TYPE  
DIRECT SHIP ITEMS: RUSH 60 DAYS

Construction	Volume fit, pro level protection and quality Custom logo and stripes included in price.
Colors	Custom color menu
Embellishments	Direct Embroidered Bauer logo Embroidered Patch Team logo



## CUSTOM NEXUS COVER SHELL

SENIOR DS  
JUNIOR DS  
YOUTH DS

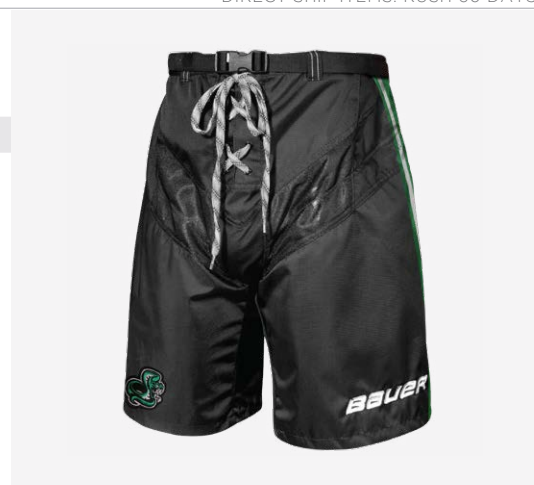
[1043793]  
[1043795]  
[1043797]

S, M, L, XL, XXL, XXXL  
S, M, L, XL  
S, M, L

### FEATURES AND TECHNOLOGY

MINIMUM OF 12 UNITS PER PANT / SHELL TYPE  
DIRECT SHIP ITEMS: RUSH 60 DAYS

Construction	Designed to fit over a pant 420 Denier nylon and vented back Custom logo and stripes included in price.
Colors	Custom color menu
Embellishments	Direct Embroidered Bauer logo Embroidered Patch Team logo



## TEAM PANT COVER SHELL

SENIOR  
JUNIOR

[1047791]  
[1047792]

S, M, L, XL, XXL, XXXL  
S, M, L

### FEATURES AND TECHNOLOGY

Construction	Designed to fit over pant Skate lace closure system Vented back with 420 denier nylon shell
Colors	Custom color menu
Embellishments	Direct Embroidered Bauer logo Embroidered Patch Team logo
Custom Colors	Black, Navy, Blue, Red



# CUSTOM PANTS

## HOW-TO CUSTOMIZE

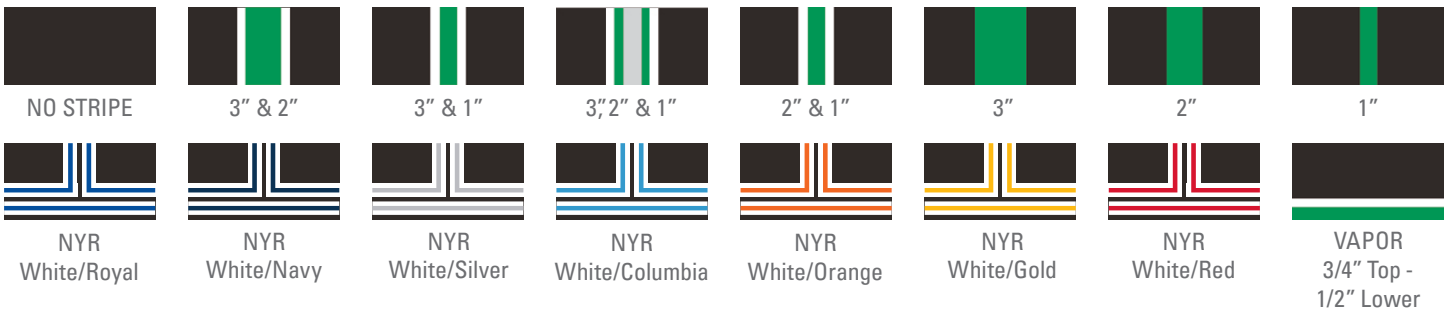
### A CHOOSE YOUR PANT OR SHELL

SELECT YOUR PANT / PANT SHELL BASE COLOR FROM ONE OF OUR 17 BAUER APPROVED TEAM COLORS

- |           |              |            |               |                |            |
|-----------|--------------|------------|---------------|----------------|------------|
| 1. Black  | 4. Dark Navy | 7. Royal   | 10. Maroon    | 13. Dark Green | 16. Orange |
| 2. White  | 5. Navy      | 8. Red     | 11. Purple    | 14. Green      | 17. Brown  |
| 3. Silver | 6. Blue      | 9. Phoenix | 12. LA Purple | 15. Kelly      |            |

### B STRIPING OPTIONS

CHOOSE A STRIPING PATTERN THAT BEST REPRESENTS YOUR TEAM OR ASSOCIATION AND THEN FINISH IT OFF WITH YOUR TEAM COLORS TO GIVE IT A TRULY UNIFIED LOOK



SELECT STRIPING COLOR FROM ONE OF OUR 25 BAUER APPROVED TEAM COLORS

- |           |              |            |               |                |            |            |              |                 |
|-----------|--------------|------------|---------------|----------------|------------|------------|--------------|-----------------|
| 1. Black  | 4. Dark Navy | 7. Royal   | 10. Maroon    | 13. Dark Green | 16. Orange | 19. Vegas  | 22. Gold     | 25. Powder Blue |
| 2. White  | 5. Navy      | 8. Red     | 11. Purple    | 14. Green      | 17. Brown  | 20. Sand   | 23. Teal     |                 |
| 3. Silver | 6. Blue      | 9. Phoenix | 12. LA Purple | 15. Kelly      | 18. Pitt   | 21. Yellow | 24. Columbia |                 |

### C BAUER EMBROIDERY COLOR

CUSTOMIZE THE BAUER BRANDING ON THE PANT TO MATCH THE TEAM / STRIPING COLORS.  
NOTE: WE CANNOT EXECUTE TONE-ON-TONE APPLICATIONS (I.E. RED PANT WITH RED BAUER BRANDING)



### D EMBROIDERY TEAM LOGO

CUSTOMIZE YOUR TEAM'S PANT / SHELL BY ADDING AN EMBROIDERED LOGO TO THE RIGHT LEG OF THE PANT.



# SIZING CHARTS

## BAUER PLAYER PANTS (Measurements in US Standard & Metric)

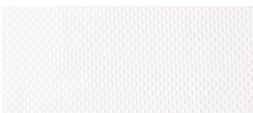
SIZE	YOUTH			JUNIOR				SENIOR					WOMEN			
	S	M	L	S	M	L	XL	S	M	L	XL	XXL	S	M	L	XL
<b>WEIGHT</b> [LBS]	40-60	45-65	50-70	60-90	70-100	80-110	90-120	120-160	140-180	160-200	180-220	200+	90-120	100-130	110-140	120-150
<b>HEIGHT</b> [IN]	3'3"-4'1"	3'7"-4'4"	3'9"-4'7"	4'3"-4'8"	4'7"-5'	4'11"-5'4"	5'3"-5'8"	5'5"-5'9"	5'7"-5'11"	5'9"-6'1"	5'11"-6'3"	6'1"+	4'5"-5'3"	4'7"-5'5"	4'9"-5'7"	5'1"-5'9"
<b>PANT SIZE</b> [IN]	20"-22"	21"-23"	21"-23"	22"-24"	24"-26"	26"-28"	28"-30"	30"-34"	32"-36"	34"-38"	36"-40"	40"+	24"-27"	26"-29"	28"-31"	30"-33"

## BAUER GOAL PANTS (Measurements in US Standard & Metric) \*Measure waist circumference where your pants naturally sit, then subtract 3" for men, 4" for women

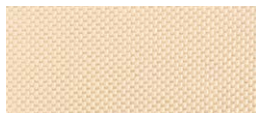
SIZE	YOUTH		JUNIOR		INTERMEDIATE			SENIOR			
	S/M	L/XL	S/M	L/XL	S	M	L	S	M	L	XL
<b>WEIGHT</b> [LBS]	40 - 53	46 - 57	55 - 68	62 - 79	77 - 90	88 - 99	97 - 130	99 - 150	130 - 170	150 - 190	180+
[KG]	18 - 24	21 - 26	25 - 31	28 - 36	35 - 41	40 - 45	44 - 59	45 - 68	59 - 77	68 - 86	82+
<b>HEIGHT</b> [FT]	3'5" - 3'11"	3'8" - 4'2"	4'1" - 4'8"	4'4" - 4'11"	4'10" - 5'2"	5'1" - 5'5"	5'4" - 5'7"	5'5" - 5'9"	5'7" - 5'11"	5'9" - 6'1"	5'11+
[M]	1.04 - 1.19	1.12 - 1.27	1.24 - 1.42	1.32 - 1.5	1.47 - 1.57	1.55 - 1.65	1.63 - 1.7	1.65 - 1.75	1.7 - 1.8	1.75 - 1.85	1.8+
<b>PANT SIZE</b> [IN]	20" - 22"	21" - 23"	22" - 25"	23" - 26"	25" - 28"	27" - 30"	29" - 32"	30" - 34"	32" - 36"	34" - 38"	36"+
[CM]	51 - 56	53 - 58	56 - 64	58 - 66	64 - 71	69 - 76	74 - 81	76 - 86	81 - 91	86 - 97	91+

# COLORS

## PANT SWATCHES



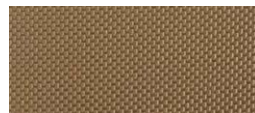
White



Sand  
(Stripe Only)



Pitt  
(Stripe Only)



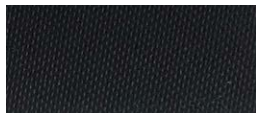
Vegas  
(Stripe Only)



Brown



Silver



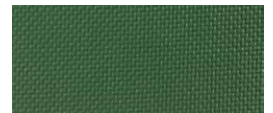
Black



Dark Green



Green



Kelly



Teal  
(Stripe Only)



Powder Blue  
(Stripe Only)



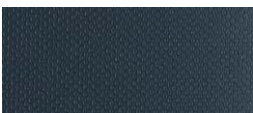
Columbia  
(Stripe Only)



Royal



Blue



Navy



Dark Navy



Purple



LA Purple



Maroon



Phoenix



Red



Orange



Gold  
(Stripe Only)



Yellow  
(Stripe Only)

## DS S20 BAUER SPEED GOAL PANT

SENIOR	[1057893]	S, M, L, XL
INTERMEDIATE	[1057895]	S, M, L
JUNIOR	[1057894]	S/M, L/XL

MINIMUM OF 12 UNITS PER PANT / SHELL TYPE  
DIRECT SHIP ITEMS: RUSH 60 DAYS

### FEATURES AND TECHNOLOGY

Construction	2 Belt system Leg protection - dynamic 2-flex with double adjustment pillows Extension fit loop +1 Tucked free-flex (skate lace closure)
Colors	Custom color menu
Embellishments	Direct Embroidered Bauer logo Embroidered Patch Team logo



## S20 BAUER ELITE GOAL PANT

SENIOR	[1056879]	S, M, L, XL
SENIOR MTO	[1056547]	S, M, L, XL
INTERMEDIATE	[1056738]	S, M, L
INTERMEDIATE MTO	[1056548]	S, M, L

### FEATURES AND TECHNOLOGY

Construction	2 Belt system Leg protection - dynamic 2-flex with double adjustment pillows Extension fit loop +1 Tucked free-flex (skate lace closure)
Colors	Black, MTO - Navy and Red
Embellishments	Direct Embroidered Bauer logo



## CUSTOM GOAL PANT SHELL

SENIOR DS	[1041431]	S, M, L, XL, XXL
INTERMEDIATE DS	[1041432]	S, M, L

MINIMUM OF 12 UNITS PER PANT / SHELL TYPE  
DIRECT SHIP ITEMS: RUSH 60 DAYS

### FEATURES AND TECHNOLOGY

Construction	Abrasion-resistant hip overlay (800 denier nylon/420 shell); Shell size is typically one size larger than pant size
Colors	Custom color menu
Embellishments	Direct Embroidered Bauer log Embroidered Patch Team logo



## BAUER GOAL SHELL

SENIOR	[1048526]	S, M, L, XL, XXL
INTERMEDIATE/JR	[1048527]	S, M, L

### FEATURES AND TECHNOLOGY

Construction	Abrasion-resistant hip overlay (800 denier nylon/420 shell); Shell size is typically one size larger than pant size
Colors	Black, Navy, Blue, Red
Embellishments	Direct Embroidered Bauer logo







BAUER  
GLOVES '23//  **BAUER**

# CUSTOM TEAM PRO SERIES

SENIOR	[1058664]	14", 15"
INTERMEDIATE	[1058665]	12", 13"
JUNIOR	[1060752]	10", 11"

## FEATURES AND TECHNOLOGY

Backhand	Dual density foam with Hyperlite HD & PE insert
Fingers	Dual density foam with Hyperlite HD & PE insert
Thumb	2-Piece Flex thumb
Shell	PRO Lite Tex + Cable mesh
Cuff roll	Molded cuff roll with 3D embroidered logo
Palm	Dual Layer Micro suede Ivory PRO PALM
Gusset	Pro style finger tip gusset
Liner	HYPER SENSE finger liner + THERMOMAX backhand pad



4-Piece Back Roll

3D 2-Color Bauer Embroidery

Team Name & Logo Embroidery

Contrasting Thumb Binding

### FIT PROFILE

Full volume fit - with a wider fit in the cuff and wider fit through the fingers, 4-roll pro team glove maximizes control with ample wrist mobility.

### BAUER BRANDING

2-color 3D embroidery stitched directly into wrist cuff

### EMBELLISHMENT

Team logo and name embroidered directly on the thumb of both gloves. Six color maximum with limited detail. Team name character limitations:

Senior: 13 / Junior: 12 / Youth: 10

### UNIQUE DESIGNS

Added customizable options allow for teams to have truly unique designed gloves on the ice.

## HOW-TO CUSTOMIZE

ZONE 1 BASE COLOR	ZONE 2 BINDING	ZONE 3 CUFF ROLL	ZONE 4 FINGERS	ZONE 5/6 BAUER LOGO	EMBELLISHMENT ZONE																	
AVAILABLE IN 23 STANDARD BAUER COLORS					EMBROIDERED TEAM NAME & LOGO																	
BLK	BLU	SIL	GLD	NAV	PUR	YEL	DGR	VGS	MAR	BRN	SND	RED	KEL	WHT	ORG	TEA	ROY	CLB	PHO	PIT	GRN	LAP

## EXAMPLES OF POSSIBLE COLOR COMBOS



# CUSTOM TEAM VAPOR PRO

SENIOR	[1058661]	14", 15"
INTERMEDIATE	[1058662]	12", 13"
JUNIOR	[1058663]	10", 11"



## FEATURES AND TECHNOLOGY

Backhand	Dual density foam with Hyperlite HD & PE insert
Fingers	Dual density foam with Hyperlite HD & PE insert
Thumb	2-Piece Flex thumb
Shell	PRO Lite Tex + Cable mesh
Cuff roll	Molded cuff roll with 3D embroidered logo
Palm	Dual Layer Micro suede Ivory PRO PALM
Gusset	Pro style finger tip gusset
Liner	HYPER SENSE finger liner + THERMOMAX backhand pad

4-Piece Back Roll

3D 2-Color Bauer Embroidery

Team Name & Logo Embroidery

Contrasting Thumb Binding

## FIT PROFILE

Tapered fit - with a wider fit in the cuff and standard fit through the fingers, pro team glove maximizes control with ample wrist mobility. With a 3-piece index finger construction, mobility is maximized.

## BAUER BRANDING

2-color 3D embroidery stitched directly into wrist cuff

## EMBELLISHMENT

Team logo and name embroidered directly on the thumb of both gloves. Six color maximum with limited detail. Team name character limitations:

Senior: 13 / Junior: 12 / Youth: 10

## UNIQUE DESIGNS

Added customizable options allow for teams to have truly unique designed gloves on the ice.

## HOW-TO CUSTOMIZE

ZONE 1 BASE COLOR	ZONE 2 BINDING	ZONE 3 CUFF ROLL	ZONE 4 FINGERS	ZONE 5/6 BAUER LOGO	EMBELLISHMENT ZONE																	
AVAILABLE IN 23 STANDARD BAUER COLORS																						
BLK	BLU	SIL	GLD	NAV	PUR	YEL	DGR	VGS	MAR	BRN	SND	RED	KEL	WHT	ORG	TEA	ROY	CLB	PHO	PIT	GRN	LAP

## EXAMPLES OF POSSIBLE COLOR COMBOS



# CUSTOM TEAM VAPOR ELITE

SENIOR	[1058666]	14", 15"
INTERMEDIATE	[1058667]	12", 13"
JUNIOR	[1058668]	10", 11"
YOUTH	[1058669]	8", 9"



## FEATURES AND TECHNOLOGY

Backhand	MID density foam & PE insert
Fingers	MID density foam & PE insert
Thumb	2-Piece Flex thumb
Shell	PRO Lite Tex +
Cuff roll	Molded cuff roll with 3D embroidered logo
Palm	Dual Layer light grey CONNEKT palm
Gusset	PolyKnit gusset
Liner	THERMOMAX

34-Piece Back Roll

3D 2-Color Bauer Embroidery

Team Name & Logo Embroidery

Grip Comfort

### FIT PROFILE

Tapered fit - with a wider fit in the cuff and standard fit through the fingers, team glove maximizes control with ample wrist mobility.

### BAUER BRANDING

2-color 3D embroidery stitched directly into wrist cuff.

### EMBELLISHMENT

Team logo and name embroidered directly on the thumb of both gloves. Six color maximum with limited detail. Team name character limitations:

Senior: 13 / Junior: 12 / Youth: 10

### INSIDE PALM

Dual Layer light grey CONNEKT palm.

## HOW-TO CUSTOMIZE

ZONE 1 BASE COLOR	ZONE 2 CUFF ROLL	ZONE 3 BAUER LOGO FILL	ZONE 4 BAUER LOGO OUTLINE	EMBELLISHMENT ZONE
AVAILABLE IN 23 STANDARD BAUER COLORS				
<div style="display: flex; justify-content: space-between; align-items: center;"> <span>BLK</span> <span>BLU</span> <span>SIL</span> <span>GLD</span> <span>NAV</span> <span>PUR</span> <span>YEL</span> <span>DGR</span> <span>VGS</span> <span>MAR</span> <span>BRN</span> <span>SND</span> <span>RED</span> <span>KEL</span> <span>WHT</span> <span>ORG</span> <span>TEA</span> <span>ROY</span> <span>CLB</span> <span>PHO</span> <span>PIT</span> <span>GRN</span> <span>LAP</span> </div>				

## EXAMPLES OF POSSIBLE COLOR COMBOS



# TEAM VAPOR PRO GLOVE

SENIOR	[1058657]	14", 15"
INTERMEDIATE	[1058658]	12", 13"
JUNIOR	[1058659]	10", 11"

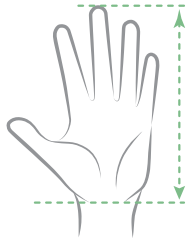
## FEATURES AND TECHNOLOGY

Size/Construction	Dual density foam with Hyperlite HD & PE inserts Flex lock thumb Patented 2-piece Flex Lock Thumb 3-Piece index finger
Colors	Black, Navy, Red



## SIZING CHART

### BAUER HOCKEY GLOVES (Measurements in US Standard & Metric)



Measure from tip of middle finger to wrist crease.

	YOUTH		JUNIOR		INTERMEDIATE		SENIOR	
SIZE	S (8")	M (9")	S (10")	M (11")	M (12")	L (13")	M (14")	L (15")
AGE	3-5	5-7	8-10	10-11	11-13	13+	14+	15+
WEIGHT	31 - 42lbs 14 - 19kg	40 - 53lbs 18 - 24kg	53 - 68lbs 24 - 31kg	66 - 79lbs 30 - 36kg	77 - 79lbs 36 - 45kg	99 - 150lbs 45 - 68kg	130 - 170lbs 59 - 77kg	150 - 190lbs 68 - 86kg
HEIGHT	3'0" - 3'6" 0.91 - 1.07m	3'5" - 3'11" 1.04 - 1.19m	4'2" - 4'8" 1.27 - 1.42m	4'7" - 4'11" 1.40 - 1.50m	4'10" - 5'5" 1.47 - 1.65m	5'5" - 5'9" 1.65 - 1.75m	5'7" - 5'11" 1.70 - 1.80m	5'9" - 6'1" 1.75 - 1.85m
LENGTH	4" - 5" 10.5 - 13cm	4" - 5" 11.5 - 14cm	4" - 5" 13 - 15.5cm	4" - 5" 14 - 16.5cm	4" - 5" 15.5 - 18cm	4" - 5" 16.5 - 19cm	4" - 5" 18 - 20.5cm	4" - 5" 19 - 22cm

## COLORS

### GLOVE SWATCHES







**BAUER**

**BAUER**  
HELMET '23// **BAUER**

## BAUER HYPERLITE2 HELMET

HELMET

[1061815]

S/M, M/L

## FEATURES AND TECHNOLOGY

Performance	Lightweight AEROLITE base combined with GX-CELLS & DCT Liner; CSA, HECC, CE, UKCA certified
Customized Fit	Adjustable Occipital Lock + FreeForm Adjustment system offers independent width and length adjustment with a locked in feel
Comfort	GX-CELLS combine comfort with an energy mitigation system, DCT temple padding + comfort wrap
Colors	Black, Navy, Blue, Red, White



## BAUER RE-AKT 150 HELMET

HELMET  
COMBO[1055151]  
[1055149]S, M, L  
S, M, L

## FEATURES AND TECHNOLOGY

Performance	VTX Technology, XRD® Foam; Molded, multi-density liner for maximum coverage; CSA, HECC, CE, UKCA certified
Customized Fit	FreeForm Adjustment system offers independent width and length adjustment
Comfort	Hinged XRD® comfort pods that conform to your head
Combo	Includes a PROFILE III Facemask Stainless steel construction with oval wire for enhanced vision CSA, HECC, CE, UKCA certified
Colors	Helmets: Black, Navy, Blue, Red, White Combos: Black, White



## BAUER RE-AKT 85 HELMET

HELMET  
COMBO[1059882]  
[1060010]S, M, L  
S, M, L

## FEATURES AND TECHNOLOGY

Performance	AEROLITE 3.0; molded, multi-density liner for maximum coverage; CSA, HECC, CE, UKCA certified
Customized Fit	FreeForm Adjustment system offers independent width and length adjustment
Comfort	DCT Liner in key sensitive areas; THERMO CORE ZERO liner to manage sweat and odors
Combo	Includes a Bauer I Facemask Carbon steel construction with oval wire for enhanced vision CSA, HECC, CE, UKCA certified
Colors	Black, White, Navy





# COLORS

## HELMET SWATCHES



## VISORS & FACEMASK

### BAUER PRO-CLIP: WAVE

CLEAR [1050366] LARGE

#### FEATURES AND TECHNOLOGY

**Performance** Updated interior anti-fog coating  
Enhanced exterior anti-scratch coating  
True Optics technology  
CSA, HECC, CE certified

**Construction** High-impact polycarbonate shield  
Exclusive QUICK-CLICK+ feature allows tool-less shield replacement  
Wave Cut

**Colors** Clear



### BAUER PRO-CLIP: STRAIGHT

CLEAR [1050354] MEDIUM  
SMOKE [1050365] MEDIUM

#### FEATURES AND TECHNOLOGY

**Performance** Updated interior anti-fog coating  
Enhanced exterior anti-scratch coating  
True Optics technology  
CSA, HECC, CE certified

**Construction** High-impact polycarbonate shield  
Exclusive QUICK-CLICK+ feature allows tool-less shield replacement  
Wave Cut

**Colors** Clear



### BAUER PRO-CLIP: REPL LENS (2 SET)

CLEAR [1050368] MEDIUM

#### FEATURES AND TECHNOLOGY

**Performance** Updated interior anti-fog coating  
Enhanced exterior anti-scratch coating  
True Optics technology  
CSA, HECC, CE certified  
2 replacement lenses

**Construction** High-impact polycarbonate shield  
Exclusive QUICK-CLICK+ feature allows tool-less shield replacement  
Straight Cut

**Colors** Clear



## BAUER I FACEMASK

[1061822] XS, S, M, L

## FEATURES AND TECHNOLOGY

Performance DCT density floating chin cup with moisture channels  
CSA, HECC, CE, UKCA certified

Construction Optimized geometry with impact carbon steel wire  
*Unique wire configuration*

Colors Black, I2 (Black outside / White Inside), White



## BAUER II FACEMASK

[1061821] XS, S, M, L

## FEATURES AND TECHNOLOGY

Performance DCT density floating chin cup with moisture channels  
CSA, HECC, CE, UKCA certified

Construction Optimized geometry with stainless steel wires offer high impact absorption in a lightweight cage offering True Vision wire decreases obstructions in the players field of vision with narrow wire strategically placed throughout the facemask

Colors Black, I2 (Black outside / White Inside), White



## BAUER CONCEPT 3 FULL VISOR

SR [1041010]  
JR [1041011]

## FEATURES AND TECHNOLOGY

Performance Interior anti-fog coating; Enhanced, exterior anti-scratch coating;  
Sr floating chin-cup  
BAUER Helmet bag included; CSA, HECC, CE certified

Construction High-impact polycarbonate shield; Strategic vent locations; Expanded visual area

Colors Clear



## DS BAUER HYPERLITE2 HELMET

HELMET

[1061818]

S/M, M/L

### FEATURES AND TECHNOLOGY

Performance	SHOCKLITE Foam Technology for lightweight impact protection Molded XRD® comfort liner; CSA, HECC, CE Certified
Customized Fit	FreeForm Adjustment system offers independent width and length adjustment
Comfort	Molded memory foam comfort liner with XRD® foam; Moisture channels to promote cooling
Custom Colors	Black, Navy, Blue, Red, White, Gold, Maroon, Phoenix, Wine, LA Purple, Green, Kelly, Dark Green, Royal, Brown, Vegas, Silver, Vegas Grey



## DS BAUER RE-AKT 150 HELMET

HELMET  
COMBO

[1055154]  
[1055141]

S, M, L  
S, M, L

### FEATURES AND TECHNOLOGY

Performance	VTX Technology, XRD® Foam Molded multi-density liner for maximum coverage CSA, HECC, CE certified
Customized Fit	FreeForm Adjustment system offers independent width and length adjustment
Comfort	Comfort pods conform to your head for comfort and protection
Combo	Includes a PROFILE III facemask Stainless steel construction with oval wire for enhanced vision Adjustable J-Clips
Custom Colors	Black, Navy, Blue, Red, White, Gold, Maroon, Phoenix, Wine, LA Purple, Green, Kelly, Dark Green, Royal, Brown, Vegas, Silver, Vegas Grey



## DS BAUER RE-AKT 85 HELMET

HELMET  
COMBO

[1060519]  
[1060531]

S, M, L  
S, M, L

### FEATURES AND TECHNOLOGY

Performance	AEROLITE 3.0 Molded, multi-density liner for maximum protection CSA, HECC, CE certified
Customized Fit	FreeForm Adjustment system offers independent width and length adjustment
Comfort	Defense Cloud Technology THERMO CORE ZERO liner
Combo	Includes a PROFILE II Facemask Carbon steel construction with oval wire for enhanced vision CSA, HECC, CE certified
Custom Colors	Black, Navy, Blue, Red, White, Gold, Maroon, Phoenix, Wine, LA Purple, Green, Kelly, Dark Green, Royal, Brown, Vegas, Silver, Vegas Grey



# SIZING CHART: SIZING AND CERTIFICATION

## BAUER HELMETS AND COMBOS (Measurements in US Standard & Metric)

### Fitting

1. Open helmet to its largest setting and position on the head so that the front edge of the helmet is one finger width above the eyebrows.
2. Slide the front and back portions of the helmet together until a comfortable, snug fit is achieved.
3. Tighten the adjustment mechanism.

Players should only use CSA, HECC and CE certified helmets. These helmets have stickers affixed that indicate their compliance with the applicable standards.

	inches	20.0	20.2	20.4	20.6	20.8	21.0	21.2	21.4	21.6	21.8	22.0	22.2	22.4	22.6	22.8	23.0	23.2	23.4	23.6	23.8	24.0	24.2	24.4	24.6	24.8	25.0	25.2	25.4	25.6	
	cm	51.0	51.5	52.0	52.5	53.0	53.5	54.0	54.5	55.0	55.5	56.0	56.5	57.0	57.5	58.0	58.5	59.0	59.5	60.0	60.5	61.0	61.5	62.0	62.5	63.0	63.5	64.0	64.5	65.0	
	mm	510	515	520	525	530	535	540	545	550	555	560	565	570	575	580	585	590	595	600	605	610	615	620	625	630	635	640	645	650	
<b>Model</b>	<b>Size</b>																														
<b>HYPERLITE2</b>	<b>S/M</b>																														
	<b>M/L</b>																														
<b>RE-AKT 150</b>	<b>S</b>																														
	<b>M</b>																														
	<b>L</b>																														
<b>RE-AKT 85</b>	<b>S</b>																														
	<b>M</b>																														
	<b>L</b>																														

BAUER



BAUER  
BAGS '23//  BAUER

## S23 BAUER CUSTOM PRO CARRY BAG - QT

SENIOR  
JUNIOR  
GOAL

[1063156]  
[1063157]  
[1063158]

32" x 20" x 17"  
30" x 18" x 15"  
40" x 22" x 22"

### FEATURES AND TECHNOLOGY

Fabric Content Heavy duty Pro-Tarp construction

Features YKK Zipper  
Quick Panel for easy customization (15.5" x 9.5")  
Oversized large main compartment with straight zipper  
Internal mesh organizer panels  
Player ID window  
DryFlow Grommets  
Reinforced HD webbing  
One side logo print per bag

Colors Black, Navy, Grey



## S23 BAUER CUSTOM PRO DUFFLE - QT

SENIOR

[1063159]

22" x 14" x 12"

### FEATURES AND TECHNOLOGY

Fabric Content Heavy duty Pro-Tarp construction

Features Large main compartment with straight zipper  
Internal mesh organizer panels  
Player ID window  
DryFlow Grommets  
Reinforced HD webbing  
Adjustable shoulder strap  
One side logo print per bag

Colors Black, Navy, Grey



## S23 BAUER CUSTOM PRO BACKPACK - QT

SENIOR

[1061862]

22" x 14" x 12"

### FEATURES AND TECHNOLOGY

Fabric Content Mix of Pro-Tarp and Black Polyester with reinforced backing construction

Features Main compartment with round zipper  
Internal mesh pocket & padded laptop pocket  
Front dry pocket with external access  
DryFlow Grommets  
Two mesh water bottle pockets  
Adjustable shoulder straps  
One side logo print per bag

Colors Black, Navy, Grey



## BAG & STRAP SWATCHES

SELECT YOUR 2" OR 1" STRAP - OUTSIDE COLOR WILL ALWAYS BE BLACK OR WHITE ON BOTH CARRY AND DUFFLE'S

**QT = QUICK-TURN** - LOGO ONLY, NO STRAP COLOR OPTION



Black



Grey



Navy



White



Black



Navy

## S23 BAUER CUSTOM PRO CARRY BAG - FC

SENIOR OCEAN	[1061830]	32" x 20" x 17"
SENIOR DS	[1061852]	32" x 20" x 17"
JUNIOR OCEAN	[1061844]	30" x 18" x 15"
JUNIOR DS	[1061855]	30" x 18" x 15"
GOAL OCEAN	[1061846]	40" x 22" x 22"
GOAL DS	[1061858]	40" x 22" x 22"

### FEATURES AND TECHNOLOGY

Fabric Content Heavy duty Pro-Tarp construction

Features  
 YKK Zipper  
 Quick Panel for easy customization (15.5" x 9.5")  
 Oversized large main compartment with straight zipper  
 Internal mesh organizer panels  
 Player ID window  
 DryFlow Grommets  
 Reinforced HD webbing  
 One side logo print per bag

Colors Black, Navy, Grey



## S23 BAUER CUSTOM PRO DUFFLE - FC

SENIOR OCEAN	[1061848]	22" x 14" x 12"
SENIOR DS	[1061860]	22" x 14" x 12"

### FEATURES AND TECHNOLOGY

Fabric Content Heavy duty Pro-Tarp construction

Features  
 Large main compartment with straight zipper  
 Internal mesh organizer panels  
 Player ID window  
 DryFlow Grommets  
 Reinforced HD webbing  
 Adjustable shoulder strap  
 One side logo print per bag

Colors Black, Navy, Grey



## BAG & STRAP SWATCHES

SELECT YOUR 2" OR 1" STRAP - OUTSIDE COLOR WILL ALWAYS BE BLACK OR WHITE ON BOTH CARRY AND DUFFLE'S

**FC = FULL-CUSTOM** - LOGO AND 17 STRAP COLORS TO CHOOSE



## S23 BAUER PRO CARRY BAG

COLOR	SR MATERIAL #	SR SIZE	JR MATERIAL #	JR SIZE	GOAL MATERIAL#	GOAL SIZE
Black	[1061832]	32" x 20" x 17"	[1061833]	30" x 18" x 15"	[1061834]	40" x 22" x 22"
Grey	[1061835]	32" x 20" x 17"	[1061836]	30" x 18" x 15"	[1061837]	40" x 22" x 22"
Navy	[1061838]	32" x 20" x 17"	[1061839]	30" x 18" x 15"	[1061840]	40" x 22" x 22"

### FEATURES AND TECHNOLOGY

Fabric Content Heavy duty Pro-Tarp construction

Features YKK Zipper  
Quick Panel for easy customization (15.5" x 9.5")  
Oversized large main compartment with straight zipper  
Internal mesh organizer panels  
Player ID window  
DryFlow Grommets  
Reinforced HD webbing

Colors Black, Navy, Grey



## S23 BAUER PRO DUFFLE

[1061842]

### FEATURES AND TECHNOLOGY

Fabric Content Heavy duty Pro-Tarp construction

Features Large main compartment with straight zipper  
Internal mesh organizer panels  
Player ID window  
DryFlow Grommets  
Reinforced HD webbing  
Adjustable shoulder strap

Colors Black, Navy, Grey



## S23 BAUER PRO BACKPACK

[1061842]

### FEATURES AND TECHNOLOGY

Fabric Content Mix of Pro-Tarp and Black Polyester with reinforced backing construction

Features Main compartment with round zipper  
Internal mesh pocket & padded laptop pocket  
Front dry pocket with external access  
DryFlow Grommets  
Two mesh water bottle pockets  
Adjustable shoulder straps

Colors Black, Navy, Grey



## TEAM STICK BAG

[1043309]

### FEATURES AND TECHNOLOGY

Materials 600D polyester

Features Carries 50 sticks;  
Large wheel base allows  
for easy movement

Colors Black



## TEAM JERSEY BAG

[1043374]

### FEATURES AND TECHNOLOGY

Materials 600D polyester

Features Carry the whole  
team's jerseys together

Colors Black







**BAUER**

**X5 PRO**

**BAUER**  
GOAL '23// **X BAUER**

## S23 VAPOR X5PRO GOAL PAD CUS-DS

SENIOR  
INTERMEDIATE

[1062179]  
[1062182]

XS, S, M, L, XL  
XS, S, M, L

### FEATURES AND TECHNOLOGY

Level	Performance
Material	CORTECH Calf Plate with Traditional Leather Front Cover
Flex Core	Soft Flex with New THIN geometry for full leg connection + CURV Stiff Thigh
Boot flex	FREE-FLEX 110 Degree Boot (Soft for Flexible Feel)
Toe	Centered Elastic Toe System (1060690)
Knee Block	STABILIFLEX Knee Block to limit over-rotation with some flexibility
Knee Wing	Comes with pads in box (Material 1060623 SUPREME PAD KNEE WING-PAIR)
Strapping	Tune Fit Strap System (1060213) featuring new lower calf strap for leg connectivity (1061743)
Calf Plate	Hybrid Calf Support System- single calf bracket for stable mobility
Color	Custom



## S23 VAPOR X5PRO CATCHER CUS-DS

SENIOR  
INTERMEDIATE

[1062180]  
[1062183]

REG, FRT  
REG, FRT

### FEATURES AND TECHNOLOGY

Level	Performance
Material	Catchlite Palm and T-Trap for easy closure
Cuff	CURV Sheet for structure durability
Palm	Improved anatomical round shape in the palm for increased comfort
Backhand	Adjustable
Color	WHT (REG, FRT)   WRD, WNV, WBK, BLK (REG only)
Fingers	Overlap pinky finger stall for added comfort and control
Protection	CURV + Rebound Control Foam to absorb puck impacts
Wrist Strap	Full Adjustment for tighter or looser fit
Fit	Full Hand Closure for more control
Weight	2.36 lbs



## S23 VAPOR X5PRO BLOCKER CUS-DS

SENIOR  
INTERMEDIATE

[1062181]  
[1062184]

REG, FRT  
REG, FRT

### FEATURES AND TECHNOLOGY

Level	Performance
Blocker Board	Shocklite for fast rebounds
Palm	14.5" DuraConnekt palm with Piano finger adjustability for custom fit
Finger Protection	Reinforced finger protection with Shocklite Shield
Cuff	Low profile molded cuff for enhanced range of motion with Aerolite
Liner	DuraConnekt for increased durability and comfort
Color	WHT (REG, FRT)   WRD, WNV, WBK, BLK (REG only)
BackHand	Lower Placement for more coverage
Side Plate	Molded F1 for reinforced shape
Weight	1.8 lbs



# SIZING CHARTS: FINDING THE RIGHT FIT

## BAUER GOALIE PADS (Measurements in US Standard & Metric)

Our simplified sizing system helps you find the pad size that is a best fit for each player:

SENIOR	PAST SIZING	32	33	34	35	36	37
	PAD SIZING	X-SMALL	SMALL	MEDIUM	LARGE	XLARGE	XXLARGE
INTERMEDIATE	PAST SIZING	29	30	31	32	69.9	74
	PAD SIZING	X-SMALL	SMALL	MEDIUM	LARGE	31"	32"
JUNIOR	PAST SIZING	24	26	28	30	78.7	81.3
	PAD SIZING	X-SMALL	SMALL	MEDIUM	LARGE	35"	35.75"
YOUTH/PRODIGY	PAST SIZING		20	22	24	89	90.8
	PAD SIZING		SMALL	MEDIUM	LARGE		35.75"

## BAUER CATCH GLOVE / BLOCKER (Measurements in US Standard & Metric)

HAND SIZE	CUSTOM PALM SIZING					INTERMEDIATE	YOUTH
	7.5" - 8"	7" - 7.5"	8" - 8.5"	7.5" - 8"	7" - 7.5"	6" - 7"	5.5" - 6.5"
19cm - 20.5cm	18cm - 19cm	20.5cm - 21.5cm	19cm - 20.5cm	18cm - 19cm	15cm - 18cm	14cm - 16.5cm	
	STOCK	INTERMEDIATE	XLARGE	STOCK	INTERMEDIATE		
	CATCHER		BLOCKER				

## BAUER GOAL PANTS (Measurements in US Standard & Metric)

\*Measure waist circumference where your pants naturally sit, then subtract 3" for men, 4" for women

SIZE	YOUTH		JUNIOR		INTERMEDIATE			SENIOR			
	S/M	L/XL	S/M	L/XL	S	M	L	S	M	L	XL
WEIGHT [LBS]	40 - 53	46 - 57	55 - 68	62 - 79	77 - 90	88 - 99	97 - 130	99 - 150	130 - 170	150 - 190	180+
[KG]	18 - 24	21 - 26	25 - 31	28 - 36	35 - 41	40 - 45	44 - 59	45 - 68	59 - 77	68 - 86	82+
HEIGHT [FT]	3'5" - 3'11"	3'8" - 4'2"	4'1" - 4'8"	4'4" - 4'11"	4'10" - 5'2"	5'1" - 5'5"	5'4" - 5'7"	5'5" - 5'9"	5'7" - 5'11"	5'9" - 6'1"	5'11+
[M]	1.04 - 1.19	1.12 - 1.27	1.24 - 1.42	1.32 - 1.5	1.47 - 1.57	1.55 - 1.65	1.63 - 1.7	1.65 - 1.75	1.7 - 1.8	1.75 - 1.85	1.8+
PANT SIZE [IN]	20" - 22"	21" - 23"	22" - 25"	23" - 26"	25" - 28"	27" - 30"	29" - 32"	30" - 34"	32" - 36"	34" - 38"	36"+
[CM]	51 - 56	53 - 58	56 - 64	58 - 66	64 - 71	69 - 76	74 - 81	76 - 86	81 - 91	86 - 97	91+

# COLORS

## GOAL SWATCHES



## DS S23 BAUER GOAL SPEED PANT RT-DS

SENIOR [1063006] S, M, L, XL  
 INTERMEDIATE [1063007] S, M, L  
 JUNIOR [1063116] S/M, L/XL

MINIMUM OF 12 UNITS PER PANT / SHELL TYPE  
 DIRECT SHIP ITEMS: RUSH 60 DAYS

### FEATURES AND TECHNOLOGY

**Construction**  
 Removable (Inner) - Dual Inner/Outer  
 Volume Fit Thick Foam for protection and coverage  
 Reinforced Velcro Double Adjustment Pillows  
 Tucked Free-Flex (Skate Lace Style) for mobility and pro look  
 Dynamic Two Flex with Double Adjustment Pillows  
 Internal Loop  
 Thermomax + for breathability  
 Extension Fit System

**Colors** Custom color menu

**Embellishments** Direct Embroidered Bauer logo  
 Embroidered Patch Team logo



## S20 BAUER ELITE GOAL PANT

SENIOR [1061618] S, M, L, XL  
 SENIOR MTO [1061619] S, M, L, XL  
 INTERMEDIATE [1061620] S, M, L  
 INTERMEDIATE MTO [1061621] S, M, L

### FEATURES AND TECHNOLOGY

**Construction**  
 Removable (Inner) - Dual Inner/Outer  
 Volume Fit Thick Foam for protection and coverage  
 Reinforced Velcro Double Adjustment Pillows  
 Tucked Free-Flex (Skate Lace Style) for mobility and pro look  
 Dynamic Two Flex with Double Adjustment Pillows  
 Internal Loop  
 Thermomax + for breathability  
 Extension Fit System

**Colors** Black, MTO - Navy and Red

**Embellishments** Direct Embroidered Bauer logo



## CUSTOM GOAL PANT SHELL

SENIOR DS [1041431] S, M, L, XL, XXL  
 INTERMEDIATE DS [1041432] S, M, L

MINIMUM OF 12 UNITS PER PANT / SHELL TYPE  
 DIRECT SHIP ITEMS: RUSH 60 DAYS

### FEATURES AND TECHNOLOGY

**Construction** Abrasion-resistant hip overlay (800 denier nylon/420 shell); Shell size is typically one size larger than pant size

**Colors** Custom color menu

**Embellishments** Direct Embroidered Bauer log  
 Embroidered Patch Team logo



## BAUER GOAL SHELL

SENIOR [1048526] S, M, L, XL, XXL  
 INTERMEDIATE/JR [1048527] S, M, L

### FEATURES AND TECHNOLOGY

**Construction** Abrasion-resistant hip overlay (800 denier nylon/420 shell); Shell size is typically one size larger than pant size

**Colors** Black, Navy, Blue, Red

**Embellishments** Direct Embroidered Bauer logo



PADS	[1056776]	S, M, L
CATCH-GLOVE	[1056778]	REG/FRT
BLOCKER	[1056782]	REG/FRT
CHEST PROTECTOR	[1056932]	S/M, M/L
PANTS	[1056708]	S/M, L/XL
STICK	[1056847]	20 LEFT

# PRODIGY

Inspired by every youth hockey player's dream of playing like the pros, the BAUER PRODIGY™ collection is built exclusively for them. The combination of lightweight materials, composite durability, and scaled down size delivers the right amount of performance on the ice. The PRODIGY™ badge represents unmatched value on the shelf, and a youth specific design that allows every young player to focus on enjoying the game.

## PADS



### FEATURES AND TECHNOLOGY

- Features**
- 1-2-3 Parent friendly strap system
  - Soft flex core insert
  - Stretch toe attachment toe
  - Soft flex + boot strap
  - Ivory nash knee landing
  - Adjustable knee wing
  - Includes youth knee guard on pads

**Colors** Black & White

## CATCH GLOVE



### FEATURES AND TECHNOLOGY

- Features**
- Made up from synthetic leather
  - One piece soft flex cuff
  - Double T-Trap
  - Free flex backhand
  - Nash liner

**Colors** Black & White

## BLOCKER



### FEATURES AND TECHNOLOGY

- Features**
- Dual density foam blocker board
  - 2-piece flex side plate
  - Ivory nash-lowered 1.5cm for easy seal palm
  - Free flex finger protection
  - Velcro closure cuff
  - Nash liner

**Colors** Black & White

## CHEST PROTECTOR



### FEATURES AND TECHNOLOGY

- Features**
- 2-point collar and velcro arm adjustment fit
  - Floating sternum
  - 3-piece belly with extended wrap
  - Optimized X2.9 elbow
  - Dynamic 2-flex arm floaters
  - Thermomax liner
  - Dual density foam forearm, bicep and shoulder cap

**Colors** Black

## PANTS



### FEATURES AND TECHNOLOGY

- Features**
- Mid profile floating spinal
  - Dual inner/outer belt
  - Skate lace closure pelvic
  - F1 Protection flex pad hip
  - Loop for knee guard knee integration
  - Thermomax liner

**Colors** Black & White

## STICK



### FEATURES AND TECHNOLOGY

- Features**
- Carbon wrap paddle construction ergo paddle
  - Flat paddle with carbon class construction
  - Double concave with carbon wrap shaft
  - Carbon glass blade

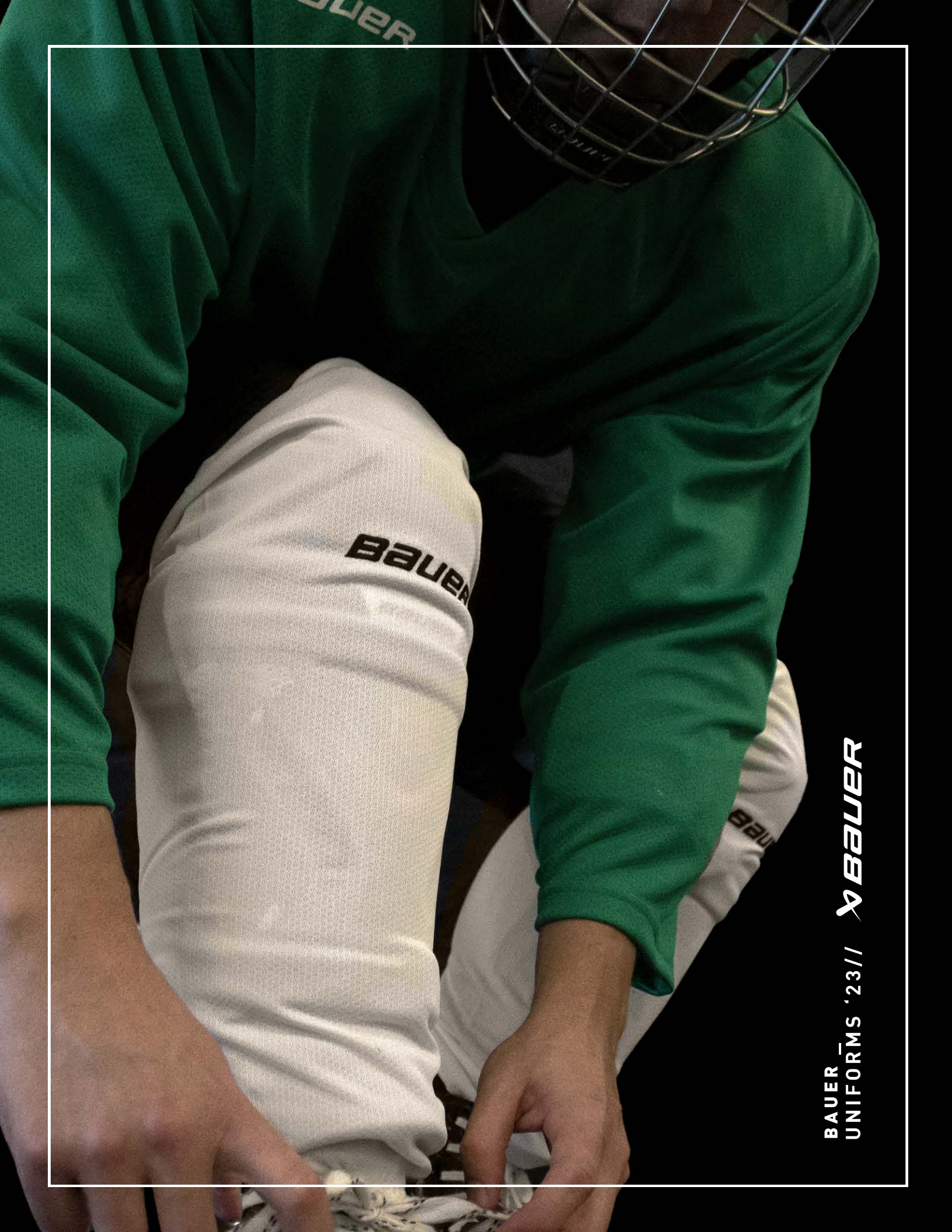
**Colors** Black & White

## SIZING CHARTS

### BAUER PRODIGY (Measurements in US Standard & Metric)

SIZE		S	M	L
WEIGHT	[LBS]	35 - 45	45 - 60	60 - 70
HEIGHT	[IN]	3'0" - 3'6"	3'5" - 3'11"	3'1"-10 - 4'4"

HAND SIZE	[IN]	4.5" - 5.5"
	[CM]	11.5 - 14



BAUER  
UNIFORMS '23//  **BAUER**

## FLEX PRACTICE JERSEYS

COLOR	SR MATERIAL #	SR SIZES	YTH MATERIAL #	YTH SIZES
Black	[1054884]	XS/S, M, L, XL, XXL, AGC	[1054925]	XS/S, M/L, YGC
White	[1054921]	XS/S, M, L, XL, XXL, AGC	[1054931]	XS/S, M/L, YGC
Silver	[1054924]	XS/S, M, L, XL, XXL, AGC	[1054936]	XS/S, M/L, YGC
Blue	[1054886]	XS/S, M, L, XL, XXL, AGC	[1054926]	XS/S, M/L, YGC
Red	[1054888]	XS/S, M, L, XL, XXL, AGC	[1054928]	XS/S, M/L, YGC
Kelly	[1054890]	XS/S, M, L, XL, XXL, AGC	[1054929]	XS/S, M/L, YGC
Navy	[1054922]	XS/S, M, L, XL, XXL, AGC	[1054933]	XS/S, M/L, YGC
Orange	[1054923]	XS/S, M, L, XL, XXL, AGC	[1054934]	XS/S, M/L, YGC

### FEATURES AND TECHNOLOGY

Fabric Content	100% POLYESTER (Weight 160g/m2)
Fit	Hockey fit
Features	Entry level practice jersey Available in 9 colors Bauer logo
Customization	Can be post embellished



## FLEX PRACTICE SOCKS

COLOR	SR MATERIAL #	SR SIZES	YTH MATERIAL #	YTH SIZES
Black	[1054598]	S/M, L/XL	[1054577]	S/M, L/XL
White	[1054597]	S/M, L/XL	[1054576]	S/M, L/XL
Silver	[1054579]	S/M, L/XL	[1054567]	S/M, L/XL
Blue	[1054594]	S/M, L/XL	[1054573]	S/M, L/XL
Red	[1054595]	S/M, L/XL	[1054574]	S/M, L/XL
Kelly	[1054591]	S/M, L/XL	[1054570]	S/M, L/XL
Navy	[1054596]	S/M, L/XL	[1054575]	S/M, L/XL
Orange	[1054580]	S/M, L/XL	[1054569]	S/M, L/XL

### FEATURES AND TECHNOLOGY

Fabric Content	100% POLYESTER (Weight 160g/m2)
Fit	Hockey fit
Features	Entry level practice sock Available in 9 colors Bauer logo



# SIZING CHARTS: FINDING THE RIGHT FIT

## FLEX SERIES - PRACTICE JERSEYS (Measurements in US Standard & Metric)

SIZE	YOUTH		SENIOR					GOAL		
	YXS/S	YM/L	AXS/S	AM	AL	AXL	AXXL	YGC	IGC	AGC
<b>CHEST</b> [IN]	19"	22.5"	25.25"	26.5"	27.5"	29.125"	30.75"	25.5"	26.5"	32.375"
1" Below Arm Hole [CM]	48.3	57.2	64.1	67.3	69.9	74	78.1	64.8	67.3	82.2
<b>FRONT BODY LENGTH</b> [IN]	24.5"	27"	29"	30"	31"	32"	33"	29"	30"	34"
High Point Shoulder [CM]	62.2	68.5	73.7	76.2	78.7	81.3	83.8	73.7	76.2	86.4
<b>SLEEVE LENGTH</b> [IN]	25"	26.5"	31.5"	34.25"	35"	35.75"	36.5"	29"	33.25"	35"
Center Back Neck [CM]	63.5	67.3	80	87	89	90.8	92.7	73.7	84.5	89

## FLEX - PRACTICE SOCKS (Measurements in US Standard & Metric)

SIZE	YOUTH		SENIOR	
	YS/M	YL/XL	AS/M	AL/XL
<b>FRONT &amp; BACK LENGTH</b> [IN]	20"	24"	28"	30"
From Top Edge to Hem [CM]	50.8	60.7	71.1	76.2
<b>KNEE</b> [IN]	8.25"	9.5"	10.5"	11.25"
Width [CM]	21	24.1	26.7	28.6
<b>TOP OPENING WIDTH</b> [IN]	7.75"	9"	10"	10.75"
Relaxed [CM]	19.7	22.9	25.4	27.3
<b>TOP OPENING WIDTH</b> [IN]	10.25"	11.5"	12.5"	13.25"
Extended [CM]	26	29.2	31.8	33.7
<b>SHIN PAD</b> [IN]	9 - 10"	11 - 13"	14 - 15"	16 - 17"
Size Reference [CM]	22.9 - 25.4	27.9 - 33	35.6 - 38.1	40.6 - 43.2

# COLORS

## FLEX SWATCHES



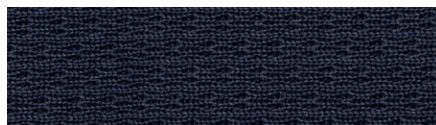
Black



White



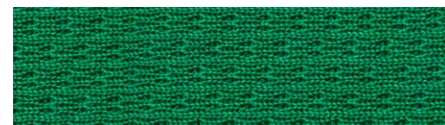
Silver



Navy



Blue



Kelly



Red



Orange



# NEXUS S22 LEAGUE GRIP STICK

## S22 NEXUS LEAGUE STICK

DEVELOPED EXCLUSIVELY FOR ELITE LEVEL TEAMS, THIS BAUER NEXUS TEAM STICK IS DESIGNED WITH HIGH LEVEL PERFORMANCE IN MIND. BUILT ON THE NEXUS FOUNDATION OF POWER, THIS STICK MAXIMIZES EVERY SHOT WITH AN AMPLIFIED MID-KICK THAT INCREASES ENERGY TRANSFER WHILE SHOOTING. THIS EXCLUSIVE STICK IS PRICED SO THAT YOUR ENTIRE TEAM CAN PERFORM TO ITS HIGHEST LEVEL.



## KEY TECHNOLOGIES:



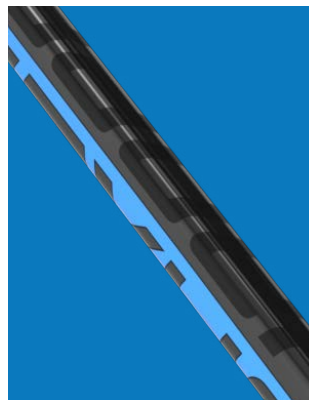
Square Shaft with Rounded Corners



Optimized Balance Point



Monocomp Construction



15k Carbon Fiber Blade Construction



## STICK DETAILS

MATERIAL NUMBERS	MATERIAL DESCRIPTION	L/R	PATTERNS
1060022	S22 Nexus League Grip Stick SR - 95	L/R	P92, P88, P28, P92M
1060023	S22 Nexus League Grip Stick SR - 87	L/R	P92, P88, P28, P92M
1060025	S22 Nexus League Grip Stick SR - 77	L/R	P92, P88, P28, P92M
1060026	S22 Nexus League Grip Stick SR - 70	L/R	P92, P88, P28, P92M
1060027	S22 Nexus League Grip Stick INT - 65	L/R	P92, P88, P28, P92M

# LOGO REQUESTS

## CUSTOMIZER LOGO REQUEST

### A HOW TO SUBMIT A LOGO

When submitting a logo for a team's locker, the logo must be in a vector format (e.g.: .Ai / .Eps / .Pdf). The logo within this file should be converted to vectors and be an editable file.

To submit a logo, please fill out the logo request form and email to: [logorequests@bauer.com](mailto:logorequests@bauer.com)

### B COLOR SPECIFICATIONS

During the logo submission process, team colors need to be clearly specified. Our customizer offers a wide range of colors so in order to make sure that team colors are correct, they need to be submitted properly.

When filling out the logo request form, please identify the team's colors by name or by using the Pantone number, if available, in the notes section. Pantone numbers are preferred as they are the industry standard for the color matching process.

Please note: colors on screen may look different than physical samples. To ensure a close match, please try to provide as much information as possible when submitting logos so that we can do our best to match the team's colors and expectations.

#### i) UNACCEPTABLE FILES



Non-vectorized artwork is not ideal due to the fact that they are generally low resolution and become blurry / pixelated when scaled up

#### NON-ACCEPTABLE FILES

.JPG / .BMP / .GIF / .TIFF / .PNG

#### i) ACCEPTABLE FILES



Vector artwork allows you to scale an image to any dimension without losing any quality.

#### ACCEPTABLE FILES

.AI / .EPS / .PDF / .SVG

## CORPORATE OFFICES

**UNITED STATES**  
100 DOMAIN DRIVE  
EXETER, NH 03833  
U.S.A

**CANADA**  
6925 CENTURY AVENUE, SUITE 6000  
MISSISSAUGA, ON L5N 0E3  
CANADA

**EUROPE**  
LUDWIGSPLATZ 18  
83022 ROSENHEIM  
GERMANY

**NORDICS**  
GRIMBOASEN 10A  
SE-41749 GOTHENBURG  
SWEDEN

© 2023 BAUER HOCKEY, LLC (U.S.), BAUER HOCKEY LTD. (CAN) AND ITS AFFILIATES. ALL RIGHTS RESERVED. BAUER, RE-AKT, SUPREME, TOTALONE, ONE80, X7.0, THERMO MAX, MAX-SORB, NEXUS, HYPERLITE AND PRODIGY ARE TRADEMARKS OF BAUER HOCKEY, LLC., AND/OR ITS AFFILIATES. VAPOR IS A REGISTERED TRADEMARK OWNED BY NIKE, INC. AND/OR ITS AFFILIATES AND USED UNDER LICENSE. MICROBAN IS A REGISTERED TRADEMARK OF MICROBAN PRODUCTS COMPANY. NEW ERA, 39THIRTY, 59FIFTY, 9FIFTY, 9FORTY, 9TWENTY, NE AND THE NEW ERA FLAG LOGO ARE ALL TRADEMARKS OF THE NEW ERA CAP COMPANY. HDO OPTICS TRADEMARK AND PATENTED TECHNOLOGY USED UNDER LICENSE FROM OAKLEY. PORON AND PORON XRD ARE REGISTERED TRADEMARKS OF ROGERS CORPORATION. 3M THINSULATE AND SCOTCHGUARD ARE REGISTERED TRADEMARKS OF 3M. YKK IS A REGISTERED TRADEMARK OF YKK CORPORATION.





BAUER  
TEAM UNITY '23//

