



# YARN TWISTERS

## Road Tripping Shawl created by Lisa Overby



This 3 skein worsted weight shawl knits up fast! If you are just venturing into shawl knitting, this is a great pattern to start with. Learn the garter tab cast on, simple lace, easy increases and boom your done!



## MATERIALS & INFO

Yarn: 3 skeins Yarn Twisters Kelton; 210 yards/115 g;  
100% 17 Micron Count Superwash Wool

Gauge: 18 sts by 30 rows equal 4" by 4" in garter  
after blocking

Needles: 5mm (US 8) 40" circular needle; or size  
needed to obtain gauge

Notions: stitch markers, darning needle

Finished size: Centre Depth: 16" (40cm); Wingspan:  
71" (180cm)

Notes:

Stitch markers are helpful in the border section to  
denote the 10 st repeat for the lace; charted  
instructions on page 4

Link to video for garter tab CO:

[Garter Tab Cast On - YouTube](#)

To make a 2 colour shawl, knit the Main Section in  
one colour and use a second colour for the Border  
Section

Link to video for cable CO:

[Cable Cast On | Purl Soho - YouTube](#)

Instruction for cable cast on: insert RHN in between  
the first and second st on the LHN (into the space  
between the sts), wrap your working yarn as for a  
knit st, and pull the st through, slip the newly created  
st onto the LHN without twisting it. Repeat until the  
required number of sts have been CO

## ABBREVIATIONS

**CO** - cast on

**k** - knit

**k2tog** - knit 2 together; insert needle into the next 2  
sts, knit the 2 sts together as one (1 st decreased)

**k2tog tbl** - knit 2 together through the back loop;  
insert needle into the next 2 sts through the back  
loop, knit the 2 sts together as one (1 st decreased)

**kfbf** - knit front, back, front; knit into the front of the  
stitch, leaving on the left hand needle, knit into the  
back of the same stitch, knit into the front of the  
same stitch again, dropping the stitch off the left  
hand needle (2 sts increased)

**LHN** - left hand needle

**m** - marker

**p** - purl

**pm** - place marker

**RHN** - right hand needle

**ssk** - slip, slip, knit; slip 2 sts knit wise, one at a time,  
to the right hand needle, place sts back on left hand  
needle and knit them together through their back  
loops (1 st decreased)

**st/sts** - stitch/stitches

**sm** - slip marker

**yo** - yarnover; bring the yarn to the front of work,  
yarnover the right hand needle (1 st increased)

## PATTERN INSTRUCTIONS

### Garter Tab CO

CO 3 sts

### Rows 1 to 7: k

Do not turn, rotate work 90 degrees, pick up and k 3  
sts garter bumps, rotate work 90 degrees, pick up  
and knit the 3 CO sts (9 sts)

### Set Up

**Row 1 (RS):** k3, kfbf, k3, kfbf, k3 (13 sts)

**Row 2 (WS):** k3, yo, p7, yo, k3 (15 sts)

**Row 3:** k3, kfbf, k to last 4 sts, kfbf, k3 (19 sts)

**Row 4:** k3, yo, k2, pm, p9, pm, k2, yo, k3 (21 sts)



## PATTERN INSTRUCTIONS cont'd

### Main Section (chart for lace panel on Page 4)

**Row 1 (RS):** k3, kfbf, k to m, sm, k2tog, k2, yo, k1, yo, k2, ssk, sm, k to last 4 sts, kfbf, k3 (4 sts increased)

**Row 2:** k3, yo, k to m, sm, p to m, sm, k to last 3 sts, yo, k3 (2 sts increased)

**Row 3:** k3, kfbf, k to m, sm, k2tog, k1, yo, k3, yo, k1, ssk, sm, k to last 4 sts, kfbf, k3 (4 sts increased)

**Row 4:** as Row 2 (2 sts increased)

**Row 5:** k3, kfbf, k to m, sm, k2tog, yo, k5, yo, ssk, sm, k to last 4 sts, kfbf, k3 (4 sts increased)

**Row 6:** as Row 2 (2 sts increased)

**Rows 7 to 102:** repeat Rows 1 to 6 **sixteen** more times (327 sts)

### Border (charts for lace on Page 4):

**Row 1:** k3, kfbf, yo, k2, ssk, k1, \*k2tog, k2, yo, k1, yo, k2, ssk, k1\*, repeat \*\* to m, sm, k2tog, k2, yo, k1, yo, k2, ssk, sm, \*k1, k2tog, k2, yo, k1, yo, k2, ssk\*, repeat \*\* to last 9 sts, k1, k2tog, k2, yo, kfbf, k3 (331 sts)

**Row 2:** k3, yo, p7, k1, \*p9, k1\*, repeat \*\* to m, sm, p to m, sm, \*k1, p9\*, repeat \*\* to last 11 sts, k1, p7, yo, k3 (333 sts)

**Row 3:** k3, kfbf, k4, yo, k1, ssk, k1, \*k2tog, k1, yo, k3, yo, k1, ssk, k1\*, repeat \*\* to m, sm, k2tog, k1, yo, k3, yo, k1, ssk, sm, \*k1, k2tog, k1, yo, k3, yo, k1, ssk\*, repeat \*\* to last 12 sts, k1, k2tog, k1, yo, k4, kfbf, k3 (337 sts)

**Row 4:** k3, yo, p13, k1, \*p9, k1\*, repeat \*\* to m, sm, p to m, sm, \*k1, p9\*, repeat \*\* to last 14 sts, k1, p10, yo, k3 (339 sts)

**Row 5:** k3, kfbf, k8, yo, ssk, k1, \*k2tog, yo, k5, yo, ssk, k1\*, repeat \*\* to m, sm, k2tog, yo, k5, yo, ssk, sm, \*k1, k2tog, yo, k5, yo, ssk\*, repeat \*\* to last 15 sts, k1, k2tog, yo, k8, kfbf, k3 (343 sts)

**Row 6:** k3, yo, p13, k1, \*p9, k1\* repeat \*\* to m, sm, p to m, sm, \*k1, p9\*, repeat \*\* to last 17 sts, k1, p13, yo, k3 (345 sts)

**Row 7:** k3, kfbf, k4, \*k2tog, k2, yo, k1, yo, k2, ssk, k1\*, repeat \*\* to m, sm, k2tog, k2, yo, k1, yo, k2, ssk, sm, \*k1, k2tog, k2, yo, k1, yo, k2, ssk\*, repeat \*\* to last 8

sts, k4, kfbf, k3 (349 sts)

**Row 8:** k3, yo, p6, k1, \*p9, k1\*, repeat \*\* to m, sm, p to m, sm, \*k1, p9\*, repeat \*\* to last 10 sts, k1, p6, yo, k3 (351 sts)

**Row 9:** k3, kfbf, k3, yo, k1, ssk, k1, \*k2tog, k1, yo, k3, yo, k1, ssk, k1\*, repeat \*\* to m, sm, k2tog, k1, yo, k3, yo, k1, ssk, sm, \*k1, k2tog, k1, yo, k3, yo, k1, ssk\*, repeat \*\* to last 11 sts, k1, k2tog, k1, yo, k3, kfbf, k3 (355 sts)

**Row 10:** k3, yo, \*p9, k1\*, repeat \*\* to m, sm, p9, sm, \*k1, p9\*, repeat \*\* to last 13 sts, k1, p9, yo, k3 (357 sts)

**Row 11:** k3, kfbf, \*k2tog, yo, k5, yo, ssk, k1\*, repeat \*\* to m, sm k2tog, yo, k5, yo, ssk, sm, \*k1, k2tog, yo, k5, yo, ssk\*, repeat \*\* to last 4 sts, kfbf, k3 (361 sts)

**Row 12:** k3, yo, p2, k1, \*p9, k1\*, repeat \*\* to m, sm, p9, sm, \*k1, p9\*, repeat to last 6 sts, k1, p2, yo, k3 (363 sts)

**Row 13:** k3, kfbf, k3, \*k2tog, k2, yo, k1, yo, k2, ssk, k1\*, repeat \*\* to m, sm, k2tog, k2, yo, k1, yo, k2, ssk, sm, \*k1, k2tog, k2, yo, k1, yo, k2, ssk\*, repeat \*\* to last 7 sts, k3, kfbf, k3 (367 sts)

**Row 14:** k3, yo, p5, k1, \*p9, k1\*, repeat \*\* to m, sm, p9, sm, \*k1, p9\*, repeat to last 9 sts, k1, p5, yo, k3 (369 sts)

**Row 15:** k3, kfbf, k2, yo, k1, ssk, \*k2tog, k1, yo, k3, yo, k1, ssk, k1\*, repeat \*\* to m, sm, k2tog, k1, yo, k3, yo, k1, ssk, sm, \*k1, k2tog, k1, yo, k3, yo, k1, ssk\*, repeat \*\* to last 10 sts, k1, k2tog, k1, yo, k2, kfbf, k3 (373 sts)

**Row 16:** k3, yo, p8, k1, \*p9, k1\*, repeat \*\* to m, sm, p9, sm, \*k1, p9\*, repeat to last 12 sts, k1, p8, yo, k3 (375 sts)

**Row 17:** k3, kfbf, k6, yo, ssk, k1 \*k2tog, yo, k5, yo, ssk, k1\*, repeat \*\* to m, sm k2tog, yo, k5, yo, ssk, sm, \*k1, k2tog, yo, k5, yo, ssk\*, repeat \*\* to last 13 sts, k1, k2tog, yo, k6, kfbf, k3 (379 sts)

**Row 18:** k3, yo, p1, k1, \*p9, k1\*, repeat \*\* to m, sm, p9, sm, \*k1, p9\*, repeat to last 5 sts, k1, p1, yo, k3 (381 sts)

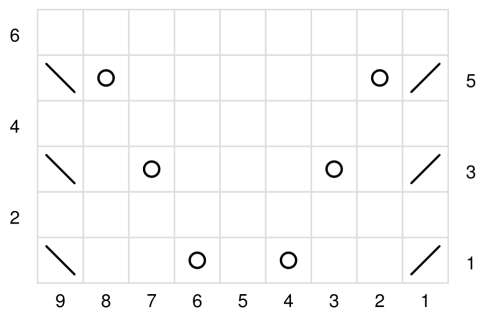


## PATTERN INSTRUCTIONS cont'd

### I-cord bind off

CO 3 sts using the cable cast on method (see instructions on page 2), \*k2, k2tog tbl, slip 3 sts onto LHN, repeat from \* to end of row. Break yarn and pull it through the 3 remaining sts

### Charted Instructions for Lace Panel of Main Section



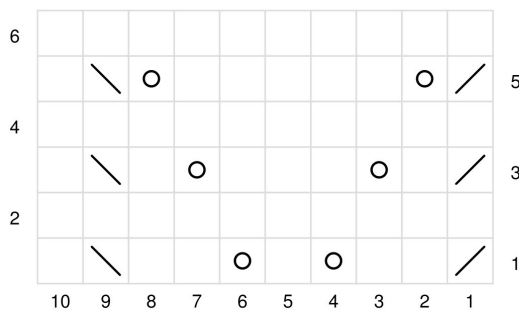
RS: knit  
WS: purl

slip knitwise, slip knitwise, knit stitches together

knit 2 together

yarn over

### Charted Instructions for Lace Border; Right Side of Shawl



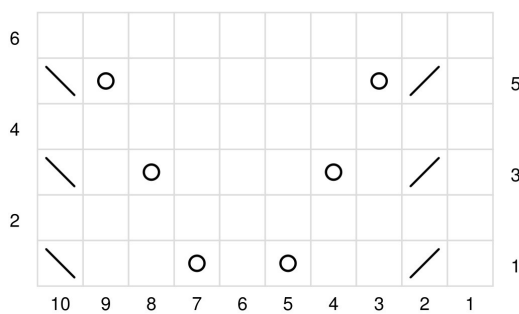
RS: knit  
WS: purl

slip knitwise, slip knitwise, knit stitches together

knit 2 together

yarn over

### Charted Instructions for Lace Border; Left Side of Shawl



RS: knit  
WS: purl

slip knitwise, slip knitwise, knit stitches together

knit 2 together

yarn over

