



YARN TWISTERS

Jobina

created by Lisa Overby



This shawl was made for a good friend as a reminder that even though we don't live in the same city, I'm always thinking of her and sending love and hugs when needed!



MATERIALS & INFO

Yarn: 1 skein Superwash Merino Sock Yarn by Olive Park Yarns; 420 yards/115g; 80% Merino, 20% Nylon; Sample knit in colourway Frost

Gauge: 24 sts by 32 rows equal 4" by 4" in garter after blocking

Needles: 4 mm (US 6) needle; or size needed to obtain gauge

Notions: stitch marker, darning needle

Finished size: Wingspan 70"; Depth at Centre: 10"

Notes:

Shawl is worked from tip to tip with increases and decreases occurring every 4 rows

Charted instructions for lace border on Page 4

ABBREVIATIONS

BO - bind off

CO - cast on

k - knit

kfb - knit into the front of the stitch, leaving on the left hand needle, knit into the back of the same stitch, dropping the stitch off the left hand needle (1 stitch increased)

k3tog - knit 3 together; insert needle into the next 3 sts, knit the 3 sts together as one (2 st decreased)

m - marker

p - purl

pm - place marker

sk2p - slip 1 knitwise, k2 together, pass slipped stitch over: slip 1 st knitwise, knit the next 2 sts together, pass the slipped stitch over and off the needle (2 sts decreased)

sl - slip

sm - slip marker

st/sts - stitch/stitches

wyif - with yarn in front

yo - yarnover (1 st increased)

PATTERN INSTRUCTIONS

CO 4 sts

Set up

Row 1 (WS): k1, kfb, p1, sl1 wyif (5 sts)

Row 2 (RS): k1, yo, k1, yo, k2, sl1 wyif (7 sts)

Row 3: k1, kfb, p4, sl1 wyif (8 sts)

Row 4: k2, yo, k1, yo, k2, pm, k2, sl1 wyif (10 st)

Row 5: k to 1 st before m, kfb, sm, p to last st, sl1 wyif (11 sts)

Row 6: k3, yo, k1, yo, k to last st, sl1 wyif (13 sts)

Row 7: k to 1 st before m, kfb, sm, p to last st, sl1 wyif (14 sts)

Row 8: k4, yo, k1, yo, k to last st, sl1 wyif (16 sts)

Row 9: k to m, sm, p to last st, sl1 wyif



PATTERN INSTRUCTIONS, con'd

Increase Section

Row 1: k7, k3tog, yo, k1, yo, k to last st, sl1 wyif

Row 2: k to 1 st before m, kfb, sm, p to last st, sl1 wyif (1 st increased)

Row 3: k5, k3tog, k1, yo, k1, yo, k to last st, sl1 wyif

Row 4: k to m, sm, p to last st, sl1 wyif

Row 5: k3, k3tog, k2, yo, k1, yo, k to last st, sl1 wyif

Row 6: k to 1 st before m, kfb, sm, p to last st, sl1 wyif (1 st increased)

Row 7: k1, k3tog, k3, yo, k1, yo, k to last st, sl1 wyif

Row 8: k to m, sm, p to last st, sl1 wyif

Row 9: k1, yo, k1, yo, sk2p, k to last st, sl1 wyif

Row 10: k to 1 st before m, kfb, sm, p to last st, sl1 wyif (1 st increased)

Row 11: k2, yo, k1, yo, k1, sk2p, k to last st, sl1 wyif

Row 12: k to m, sm, p to last st, sl1 wyif

Row 13: k3, yo, k1, yo, k2, sk2p, k to last st, sl1 wyif

Row 14: k to 1 st before m, kfb, sm, p to last st, sl1 wyif (1 st increased)

Row 15: k4, yo, k1, yo, k3, sk2p, k to last st, sl1 wyif

Row 16: k to m, sm, p to last st, sl1 wyif

Rows 17 to 208: repeat Rows 1 to 16 **twelve** more times (68 sts)

Straight Section

Row 1: k7, k3tog, yo, k1, yo, k to last st, sl1 wyif

Row 2: k to m, sm, p to last st, sl1 wyif

Row 3: k5, k3tog, k1, yo, k1, yo, k to last st, sl1 wyif

Row 4: k to m, sm, p to last st, sl1 wyif

Row 5: k3, k3tog, k2, yo, k1, yo, k to last st, sl1 wyif

Row 6: k to m, sm, p to last st, sl1 wyif

Row 7: k1, k3tog, k3, yo, k1, yo, k to last st, sl1 wyif

Row 8: k to m, sm, p to last st, sl1 wyif

Row 9: k1, yo, k1, yo, sk2p, k to last st, sl1 wyif

Row 10: k to m, sm, p to last st, sl1 wyif

Row 11: k2, yo, k1, yo, k1, sk2p, k to last st, sl1 wyif

Row 12: k to m, sm, p to last st, sl1 wyif

Row 13: k3, yo, k1, yo, k2, sk2p, k to last st, sl1 wyif

Row 14: k to m, sm, p to last st, sl1 wyif

Row 15: k4, yo, k1, yo, k3, sk2p, k to last st, sl1 wyif

Row 16: k to m, sm, p to last st, sl1 wyif

Rows 17 to 64: repeat Rows 1 to 16 **three** more times (68 sts)

Decrease Section

Row 1: k7, k3tog, yo, k1, yo, k to last st, sl1 wyif

Row 2: k to 2 sts before m, k2tog, sm, p to last st, sl1 wyif (1 st decreased)

Row 3: k5, k3tog, k1, yo, k1, yo, k to last st, sl1 wyif

Row 4: k to m, sm, p to last st, sl1 wyif

Row 5: k3, k3tog, k2, yo, k1, yo, k to last st, sl1 wyif

Row 6: k to 2 sts before m, k2tog, sm, p to last st, sl1 wyif (1 st decreased)

Row 7: k1, k3tog, k3, yo, k1, yo, k to last st, sl1 wyif

Row 8: k to m, sm, p to last st, sl1 wyif

Row 9: k1, yo, k1, yo, sk2p, k to last st, sl1 wyif

Row 10: k to 2 sts before m, k2tog, sm, p to last st, sl1 wyif (1 st decreased)

Row 11: k2, yo, k1, yo, k1, sk2p, k to last st, sl1 wyif

Row 12: k to m, sm, p to last st, sl1 wyif

Row 13: k3, yo, k1, yo, k2, sk2p, k to last st, sl1 wyif

Row 14: k to 2 sts before m, k2tog, sm, p to last st, sl1 wyif (1 st decreased)

Row 15: k4, yo, k1, yo, k3, sk2p, k to last st, sl1 wyif

Row 16: k to m, sm, p to last st, sl1 wyif

Rows 17 to 216: repeat Rows 1 to 16 **twelve** more times, then Rows 1 to 8 **once** (14 sts)



PATTERN INSTRUCTIONS, con'd

Finishing

Row 1: k2, sk2p, k to last st, sl1 wyif (12 sts)

Row 2: k to m, sm, p to last st, sl1 wyif

Row 3: as Row 1 (10 sts)

Row 4: as Row 2

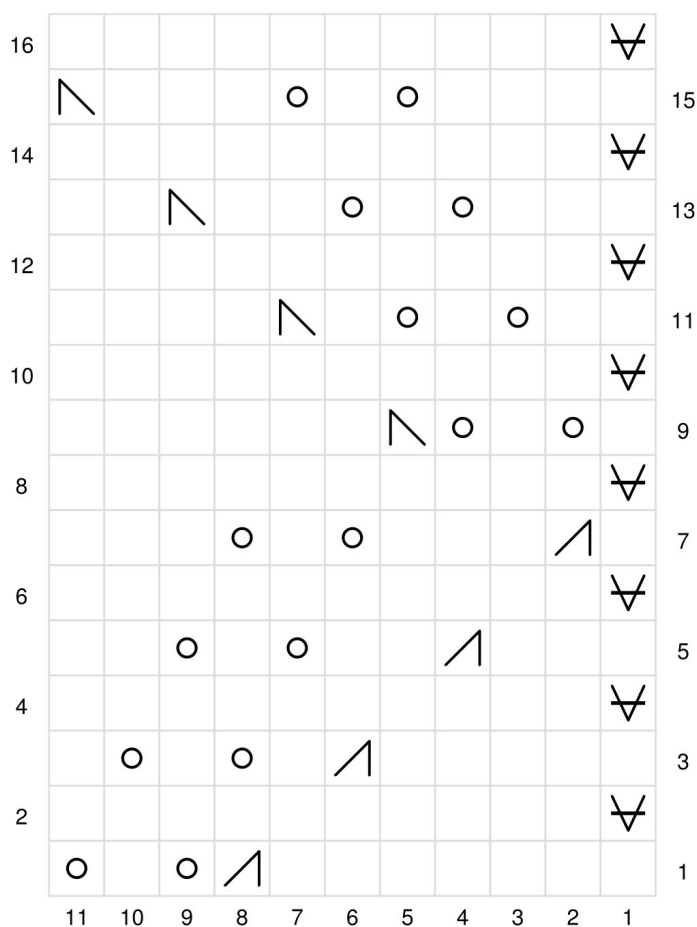
Row 5: as Row 1 (8 sts)

Row 6: as Row 2

Row 7: as Row 1 (6 sts)

Row 8: k1, k2tog, remove m, p2, sl1 wyif (5 sts)

BO sts, weave in ends and block piece to measurements



RS: knit
WS: purl



knit 3 together



slip 1 knit wise, knit 2 together, pass slipped stitch over



yarn over



Slip 1 stitch purlwise with yarn in front

