



# YARN TWISTERS

## Dewdrop Shawl DK

created by Lisa Overby



One skein double knit weight crescent shaped shawl, with a simple, reversible dewdrop lace pattern. Original shawl was knit with fingering weight, this version is approximately the same size, but with bigger yarn, which makes it a faster knit!



## MATERIALS & INFO

Yarn: 1 skein Yarn Twisters Kinsley 280 yards/115 g;  
100% 17 Micron Count Superwash Wool; Sample knit in  
colourway Raspberry Cordial

Gauge: 16 sts by 28 rows equal 4" by 4" in pattern  
after blocking

Needles: 5 mm (US 8) 32" circular needles, or size  
needed to obtain gauge

Notions: stitch marker (optional to denote the RS),  
darning needle

Finished size: Centre Depth: 11"(28cm); Wingspan:  
43" (109cm)

## ABBREVIATIONS

**BO** - bind off

**cdd** - slip 2 stitches as if to k2tog, knit 1, pass 2 slipped  
stitches together over the knit stitch (2 stitches de-  
creased)

**CO** - cast on

**k** - knit

**k2tog** - knit 2 together; insert needle into the next 2  
sts, knit the 2 sts together as one (1 st decreased)

**kyok** - k1, yo, k1 into the same stitch (2 sts increased)

**LHN** - left hand needle

**p** - purl

**RHN** - right hand needle

**RS** - right side

**ssk** - slip, slip, knit; slip 2 sts knit wise, one at a time,  
to the right hand needle, place sts back on left hand  
needle and knit them together through their back  
loops (1 st decreased)

**st/sts** - stitch/stitches

**WS** - wrong side

**yo** - yarnover

## PATTERN INSTRUCTIONS

### Garter Tab CO

CO 2 sts, k for 15 rows, do not turn work; pick up 7 sts  
along the edge, then pick and k the 2 CO sts (11 sts)

### Set up

**Row 1 (RS):** k2, yo, k2, p3, k2, yo, k2 (13sts)

**Row 2 (WS):** k2, kyok, p2, k3, p2, kyok, k2 (17 sts)

**Row 3:** k2, yo, p2, k3, p3, k3, p2, yo, k2 (19 sts)

**Row 4:** k2, kyok, k2tog, yo, k3, yo, cdd, yo, k3, yo, ssk,  
kyok, k2 (23 sts)

**Row 5:** k2, yo, p2, k3, p3, k3, p3, k3, p2, yo, k2 (25 sts)

**Row 6:** k2, kyok, k2, p3, k3, p3, k3, p3, k2, kyok, k2 (29  
sts)

**Row 7:** k2, yo, k2, p3, k3, p3, k3, p3, k3, p3, k2, yo, k2  
(31 sts)

**Row 8:** k2, kyok, k2, \*yo, cdd, yo, k3\*, repeat \*\* to  
last 8 sts, yo, cdd, yo, k2, kyok, k2 (35 sts)



## PATTERN INSTRUCTIONS cont'd

### Main Section

**Row 1 (RS):** k2, yo, k2, \*p3, k3\*, repeat \*\* to last 7 sts, p3, k2, yo, k2 (2 sts increased)

**Row 2 (WS):** k2, kyok, p2, \*k3, p3\*, repeat \*\* to last 8 sts, k3, p2, kyok, k2 (4 sts increased)

**Row 3:** k2, yo, p2, \*k3, p3\*, repeat \*\* to last 7 sts, k3, p2, yo, k2 (2 sts increased)

**Row 4:** k2, kyok, k2tog, yo, \*k3, yo, cdd, yo\*, repeat \*\* to last 8 sts, k3, yo, ssk, kyok, k2 (4 sts increased)

**Row 5:** k2, yo, p2, \*k3, p3\*, repeat \*\* to last 7 sts, k3, p2, yo, k2 (2 sts increased)

**Row 6:** k2, kyok, k2, \*p3, k3\*, repeat \*\* to last 8 sts, p3, k2, kyok, k2 (4 sts increased)

**Row 7:** k2, yo, k2, \*p3, k3\*, repeat \*\* to last 7 sts, p3, k2, yo, k2 (2 sts increased)

**Row 8:** k2, kyok, k2, \*yo, cdd, yo, k3\*, repeat \*\* to last 8 sts, yo, cdd, yo, k2, kyok, k2 (4 sts increased)

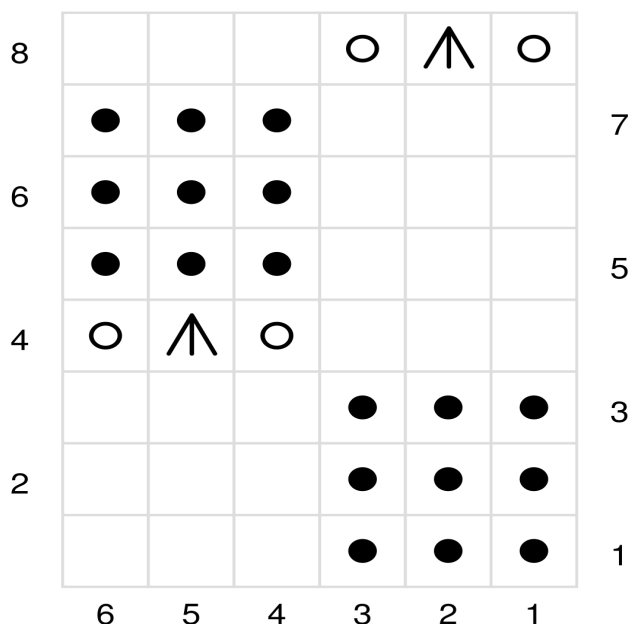
Repeat **Rows 1 to 8** eight more times (24 sts increased)

per repeat), then repeat **Rows 1 to 2** once (222 sts)

### Bind off

To ensure a stretchy edge, BO all stitches in the following manner to ensure a stretchy edge: k1, \*k1, insert LHN into the 2 sts on the RHN, knit the 2 sts together through the back loop. Repeat from \* until all sts have been bound off

Weave in ends, block to measurements



RS: Knit  
WS: Purl



RS: Purl  
WS: Knit



Central double decrease



Yarn over

