



Pattern Collection: Accessories



Basketweave Hat

Designed by Universal Yarn Design Team

SIZES

Child (Adult Small/Medium, Adult Medium/Large)

FINISHED MEASUREMENTS

Brim Circumference: 16 (18¾, 21¼)"

Length: 7 (8½, 8½)"

MATERIALS

Universal Yarn Be Wool Multis (60% acrylic, 40% wool; 170g/80 yds)

- 203 Island – 1 ball (all sizes)

Needles: US Size 15 (10 mm) 16" circular and set of dpns (or your preferred needle for knitting small circumferences) *or size needed to obtain gauge*

Notions: Tapestry needle, stitch marker

GAUGE

9 sts x 16 rnds = 4" in Basketweave patt

Save time, check your gauge.

Knit. Relax. Smile. Repeat!

2020 © Universal Yarn, Inc.

All rights reserved.

This pattern may not be reproduced for business, trade or sale.

PATTERN NOTES

The Basketweave Hat is a cozy, one skein project you can whip us in just a few hours (if that!). Knit up in super-bulky Be Wool Multis, the simple stitch pattern allows the speckled yarn to shine.

This hat is knit in the round from the bottom up.

STITCH GUIDE

Basketweave

(multiple of 6 sts)

Rnd 1: * K3, p3; rep from * to end.

Rnd 2: Knit.

Rnds 3-6: Rep Rnds 1-2, 2 times.

Rnd 7: * P3, k3; rep from * to end.

Rnd 8: Knit.

Rnds 9-12: Rep Rnds 7-8, 2 times.

Rep Rnds 1-12 for patt.

HAT - Child Size Only

With dpns, cast on 36 sts. PM and join to knit in the rnd, being careful not to twist.

Rnd 1: Work Rnd 1 of Basketweave patt to end.

Patt will be repeated 6 times across each rnd.

Rnd 2: Work Rnd 2 of Basketweave patt to end.

Cont as est'd through Rnd 12 of Basketweave patt, then rep Rnds 1-7 of Basketweave patt, one more time.

Shape Crown

Note: This section is also charted for your convenience.

Change to dpns.

Rnd 1: * Ssk, k2, k2tog; rep from * to end – 12 sts dec'd, 24 sts rem.

Rnd 2: * P2, k2; rep from * to end.

Rnd 3: Knit.

Rnd 4: Rep Rnd 2.

Rnd 5: * Ssk, k2tog; rep from * to end – 12 sts dec'd, 12 sts rem.

Rnd 6: * K1, p1; rep from * to end.

Rnd 7: Knit.

Rnd 8: Rep Rnd 6.

Rnd 9: * K2tog; rep from * to end – 6 sts dec'd, 6 sts rem.

Break yarn leaving approx. 8" tail. Thread tail through rem live sts. Pull taut to close.

HAT - Adult Small/Medium & Medium/Large Only

Cast on 42 (48) sts. PM and join to knit in the rnd, being careful not to twist.

Rnd 1: Work Rnd 1 of Basketweave patt to end.

Patt will be repeated 7 (8) times across each rnd.

Rnd 2: Work Rnd 2 of Basketweave patt to end.

Cont as est'd through Rnd 12 of Basketweave patt, then rep Rnds 1-12, one more time, then rep Rnd 1, one time.

Shape Crown

Note 1: This section is also charted for your convenience.

Note 2: Change to dpns when there are too few stitches to fit comfortably on circular needle.

Rnd 1: * Ssk, k2, k2tog; rep from * to end – 14 (16) sts dec'd, 28 (32) sts rem.

Rnd 2: * K2, p2; rep from * to end.

Rnd 3: Knit.

Rnd 4: Rep Rnd 2.

Rnd 5: * Ssk, k2tog; rep from * to end – 14 (16) sts dec'd, 14 (16) sts rem.

Rnd 6: * P1, k1; rep from * to end.

Rnd 7: Knit.

Rnd 8: Rep Rnd 6.

Rnd 9: * K2tog; rep from * to end – 7 (8) sts dec'd, 7 (8) sts rem.

Break yarn leaving approx. 8" tail. Thread tail through rem live sts. Pull taut to close.

FINISHING

Gently wash and block to finished measurements. Weave in ends.

Knit. Relax. Smile. Repeat!

2020 © Universal Yarn, Inc.

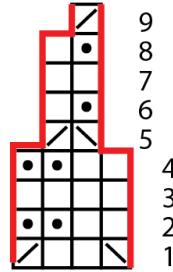
All rights reserved.

This pattern may not be reproduced for business, trade or sale.

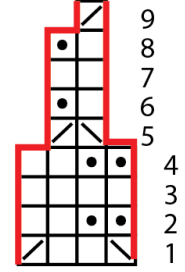
Abbreviations

cont	continue
dec('d)	decrease(d)
dpn(s)	double pointed needle(s)
est'd	established
k	knit
k2tog	knit 2 stitches together (1 st dec'd)
p	purl
patt	pattern
pm	place marker
rem	remain(ing)
rep	repeat
rnd	round
ssk	slip next 2 sts individually knitwise, slip them back to left needle in this position, knit them together through the back loops (1 st dec'd)
st(s)	stitch(es)

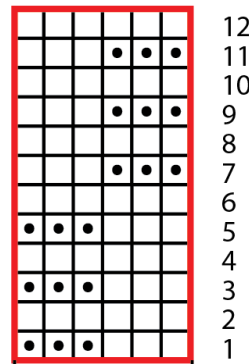
Shape Crown (Adult Small/Medium & Medium/Large Only)



Shape Crown (Child Size Only)




Basketweave



6 stitch repeat

Key

-  pattern repeat
-  knit
-  purl
-  ssk
-  k2tog

Knit. Relax. Smile. Repeat!

2020 © Universal Yarn, Inc.
All rights reserved.

This pattern may not be reproduced for business, trade or sale.