



URBAN LIFE

2023 RANGE



CREATIVITY • INNOVATION
LIFESTYLE • MOBILITY • DESIGN
SUSTAINABILITY • STYLE

#ORDINARYSPECIAL



**ENJOY
YOUR
STREET**

MP3 EXCLUSIVE

530 hpe



- NEW 530 hpe ENGINE EURO 5
- ABS/ASR SYSTEM WITH COMBINED BRAKING
- STORAGE COMPARTMENT WITH USB PORT
- UNDERSEAT COMPARTMENT SPACIOUS ENOUGH FOR 2 FULL-FACE HELMETS
- FULL LED LIGHT CLUSTER
- 7" COLOUR TFT INSTRUMENTATION
- PARKING SYSTEM WITH NO STAND
- KEYLESS SYSTEM
- CRUISE CONTROL
- 3 DRIVING MODE MAPS (eco/sport/comfort)
- SADDLE OPENER REMOTE CONTROL WITH BIKE FINDER
- REVERSE GEAR WITH REAR CAMERA
- RADAR SYSTEM FOR BLIS and LCDAS FEATURES
- PIAGGIO MIA CONNECTIVITY SYSTEM
- PIAGGIO MP3 EXCLUSIVE CAN BE RIDDEN WITH A STANDARD CAR DRIVER'S LICENCE, WITHIN THE LIMITS OF THE LAW



MP3

400 hpe



- 400 hpe ENGINE EURO 5
- ABS/ASR SYSTEM WITH COMBINED BRAKING
- STORAGE COMPARTMENT WITH USB PORT
- UNDERSEAT COMPARTMENT SPACIOUS ENOUGH FOR 2 FULL-FACE HELMETS
- FULL LED LIGHT CLUSTER
- 7" COLOUR TFT INSTRUMENTATION
- PARKING SYSTEM WITH NO STAND
- KEYLESS SYSTEM
- SADDLE OPENER REMOTE CONTROL WITH BIKE FINDER
- PIAGGIO MP3 CAN BE RIDDEN WITH A STANDARD CAR DRIVER'S LICENCE, WITHIN THE LIMITS OF THE LAW

MP3 SPORT

400 hpe



- 400 hpe ENGINE EURO 5
- ABS/ASR SYSTEM WITH COMBINED BRAKING
- STORAGE COMPARTMENT WITH USB PORT
- UNDERSEAT COMPARTMENT SPACIOUS ENOUGH FOR 2 FULL-FACE HELMETS
- FULL LED LIGHT CLUSTER
- 7" COLOUR TFT INSTRUMENTATION
- PARKING SYSTEM WITH NO STAND
- KEYLESS SYSTEM
- SADDLE OPENER REMOTE CONTROL WITH BIKE FINDER
- SPORTY FINISHING WITH WAVY FRONT DISCS
- RIDER FOOTBOARDS WITH METAL INSERTS
- PIAGGIO MIA CONNECTIVITY SYSTEM
- PIAGGIO MP3 SPORT CAN BE RIDDEN WITH A STANDARD CAR DRIVER'S LICENCE WITHIN THE LIMITS OF THE LAW



MP3

300 hpe



- HIGHER PERFORMANCE 300 hpe ENGINE
- COMPLETE INSTRUMENTATION WITH MULTIFUNCTION DISPLAY
- ABS/ASR SYSTEM WITH COMBINED BRAKING
- DOUBLE HEADLIGHT WITH LED DRL
- COMFORTABLE SADDLE WITH LUMBAR SUPPORT
- UNDERSEAT COMPARTMENT SPACIOUS ENOUGH FOR TWO JET HELMETS
- LED FRONT AND REAR TURN INDICATORS
- STORAGE COMPARTMENT WITH USB PORT
- PIAGGIO MP3 300 hpe CAN BE RIDDEN WITH A STANDARD CAR DRIVER'S LICENCE, WITHIN THE LIMITS OF THE LAW



MP3 SPORT

300 hpe



- HIGHER PERFORMANCE 300 hpe ENGINE
- COMPLETE INSTRUMENTATION WITH MULTIFUNCTION DISPLAY
- ABS/ASR SYSTEM WITH COMBINED BRAKING
- DOUBLE HEADLIGHT WITH LED DRL
- COMFORTABLE SADDLE WITH LUMBAR SUPPORT
- UNDERSEAT COMPARTMENT SPACIOUS ENOUGH FOR TWO JET HELMETS
- LED FRONT AND REAR TURN INDICATORS
- STORAGE COMPARTMENT WITH USB PORT
- RED-PAINTED FRONT AND REAR SHOCK ABSORBER SPRINGS
- METALLIC FOOTREST COVERS
- WAVY PROFILE FRONT BRAKE DISCS
- PIAGGIO MIA CONNECTIVITY SYSTEM AS STANDARD EQUIPMENT
- PIAGGIO MP3 300 hpe SPORT CAN BE RIDDEN WITH A STANDARD CAR DRIVER'S LICENCE, WITHIN THE LIMITS OF THE LAW

MP3 DEEP BLACK

300 hpe



- HIGHER PERFORMANCE 300 hpe ENGINE
- COMPLETE INSTRUMENTATION WITH MULTIFUNCTION DISPLAY
- ABS/ASR SYSTEM WITH COMBINED BRAKING
- DOUBLE HEADLIGHT WITH LED DRL
- COMFORTABLE SADDLE WITH LUMBAR SUPPORT
- UNDERSEAT COMPARTMENT SPACIOUS ENOUGH FOR TWO JET HELMETS
- LED FRONT AND REAR TURN INDICATORS
- STORAGE COMPARTMENT WITH USB PORT
- TOTAL BLACK LOOK
- TOTAL BLACK FINISHING
- SMOKED WINDSCREEN
- TOTAL BLACK DASHBOARD
- TOTAL BLACK CONTROL BLOCKS
- GLOSSY BLACK WHEEL RIMS
- PIAGGIO MP3 300 hpe CAN BE RIDDEN WITH A STANDARD CAR DRIVER'S LICENCE, WITHIN THE LIMITS OF THE LAW

BEVERLY

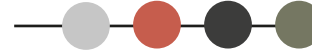
300 hpe - 400 hpe



- DESIGN WITH MODERN AND DYNAMIC LINES
- NEW 300 hpe AND 400 hpe ENGINES WITH ABS/ASR SYSTEM
- NEW SUSPENSION SYSTEM FOR MAXIMUM STABILITY AND COMFORT
- SPACIOUS UNDERSEAT COMPARTMENT, LARGE ENOUGH TO HOLD TWO JET HELMETS
- STORAGE COMPARTMENT WITH USB PORT
- FLYSCREEN (STANDARD ON 400 hpe)
- KEYLESS SYSTEM
- FULLY DIGITAL INSTRUMENT CLUSTER
- FULL LED LIGHTING SYSTEM
- ADVANCED PIAGGIO MIA CONNECTIVITY SYSTEM (STANDARD ON 400 hpe)
- SMART, SOPHISTICATED STYLE: GLOSSY COLOUR RANGE, DARK BROWN SADDLE WITH DOUBLE MATERIAL AND TONE-ON-TONE DOUBLE-STITCHING. WARM METALLIC FINISHES AND LIGHT GREY WHEEL RIMS.

BEVERLY S

300 hpe - 400 hpe



- DYNAMIC AND MODERN DESIGN
- 300 hpe AND 400 hpe ENGINES WITH ABS/ASR SYSTEM
- SUSPENSION SYSTEM FOR MAXIMUM STABILITY AND COMFORT
- UNDERSEAT COMPARTMENT LARGE ENOUGH TO HOLD TWO JET HELMETS AND STORAGE COMPARTMENT WITH USB PORT
- FLYSCREEN (STANDARD ON 400 hpe)
- KEYLESS SYSTEM
- FULLY DIGITAL INSTRUMENT CLUSTER
- FULL LED LIGHTING SYSTEM
- ADVANCED PIAGGIO MIA CONNECTIVITY SYSTEM (OPTIONAL ON 300 hpe)
- SPORTY STYLE WITH DOUBLE-MATERIAL AND CONTRASTING DOUBLE-STITCHED BLACK SADDLE. GRAPHITE-EFFECT FINISHES AND DARK GREY WHEEL RIMS.

BEVERLY DEEP BLACK

300 hpe - 400 hpe



- DYNAMIC AND MODERN DESIGN
- 300 hpe AND 400 hpe ENGINES WITH ABS/ASR SYSTEM
- SUSPENSION SYSTEM FOR MAXIMUM STABILITY AND COMFORT
- UNDERSEAT COMPARTMENT LARGE ENOUGH TO HOLD TWO JET HELMETS AND STORAGE COMPARTMENT WITH USB PORT
- FLYSCREEN (STANDARD ON 400 hpe)
- FULLY DIGITAL INSTRUMENT CLUSTER, FULL LED LIGHTING SYSTEM AND KEYLESS SYSTEM
- ADVANCED PIAGGIO MIA CONNECTIVITY SYSTEM (OPTIONAL ON 300 hpe)
- OPTIONAL SIDE STAND
- TOTAL BLACK LOOK
- GLOSSY BLACK FINISHING IN CONTRAST WITH THE MATT BLACK COLOUR OF THE BODY
- GLOSSY BLACK WHEEL RIMS
- NEW TOTAL BLACK SADDLE FOR MATERIAL AND STITCHING



make a

NOVE

MEDLEY

150 i-get - 125 i-get



- I-GET 125 AND 150 CC ENGINES WITH START&STOP SYSTEM
- DYNAMIC DESIGN
- HEADLIGHT AND FULL LED DRL
- MULTIFUNCTION LCD DIGITAL INSTRUMENT CLUSTER
- ERGONOMIC SEAT

- ABS/ASR SYSTEM
- SPACIOUS UNDERSEAT COMPARTMENT, LARGE ENOUGH TO HOLD TWO FULL-FACE HELMETS
- STORAGE COMPARTMENT WITH USB PORT
- CLASSIC, ELEGANT COLOURS MATCHED WITH MATT BRONZE FINISHES





MEDLEY S

150 i-get - 125 i-get



- I-GET 125 AND 150 CC ENGINES WITH START&STOP SYSTEM
- DYNAMIC DESIGN
- HEADLIGHT AND FULL LED DRL
- MULTIFUNCTION LCD DIGITAL INSTRUMENT CLUSTER
- ERGONOMIC SEAT
- ABS/ASR SYSTEM
- SPACIOUS UNDERSEAT COMPARTMENT, LARGE ENOUGH TO HOLD TWO FULL-FACE HELMETS
- STORAGE COMPARTMENT WITH USB PORT
- SPORTY COLOURS MATCHED WITH BLACK AND RED FINISHES
- WAVY PROFILE FRONT AND REAR BRAKE DISC AND GOLD-COLOURED CALIPERS
- PIAGGIO MIA* CONNECTIVITY SYSTEM AS STANDARD EQUIPMENT

LIBERTY

150 i-get ABS - 125 i-get ABS - 50 i-get



- INSTRUMENTATION WITH LCD DISPLAY
- ABS ONLY ON THE FRONT WHEEL ON 125 AND 150 CC
- AIR-COOLED I-GET ENGINES EQUIPPED, FOR ALL ENGINE CAPACITIES, WITH ELECTRONIC INJECTION AND 3 VALVES
- UNDERSEAT COMPARTMENT LARGE ENOUGH TO HOLD A JET HELMET WITH VISOR
- FRONT COMPARTMENT FOR STORAGE OF SMALL ITEMS
- LOW, EASILY ACCESSIBLE SADDLE AND FOLD-AWAY PASSENGER FOOTPEGS FOR GREATER COMFORT

LIBERTY S

150 i-get ABS - 125 i-get ABS - 50 i-get



- INSTRUMENTATION WITH LCD DISPLAY
- ABS ONLY ON THE FRONT WHEEL ON 125 AND 150 CC
- AIR-COOLED I-GET ENGINES EQUIPPED, FOR ALL ENGINE CAPACITIES, WITH ELECTRONIC INJECTION AND 3 VALVES
- UNDERSEAT COMPARTMENT LARGE ENOUGH TO HOLD A JET HELMET WITH VISOR
- FRONT COMPARTMENT FOR STORAGE OF SMALL ITEMS
- LOW, EASILY ACCESSIBLE SADDLE AND FOLD-AWAY PASSENGER FOOTPEGS FOR GREATER COMFORT

ENJOY



yourself

PIAGGIO 1

PIAGGIO 1
PIAGGIO 1+
PIAGGIO 1 Active



All 6 colors
are available for all models



- FRONT AND REAR LED LIGHTS
- LARGE UNDERSEAT COMPARTMENT FOR A JET HELMET
- KEYLESS SYSTEM
- INNOVATIVE DESIGN WITH 3D TEXTURES
- ELECTRIC ENGINE
- DIGITAL COLOR DASHBOARD
- MOPED VERSION 45 AND 25 KM/H
- MOTORCYCLE 60 KM/H
- BRIGHT AND ORIGINAL COLORS
- PIAGGIO MIA SYSTEM AS STANDARD ON PIAGGIO 1+ AND ACTIVE



PIAGGIO
FenG CHen WANG
the mobility of tomorrow
meets the future
of modern fashion

PIAGGIO 1
FENG CHEN WANG

PIAGGIO 1
PIAGGIO 1 Active

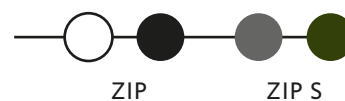


- FRONT AND REAR LED LIGHTS
- LARGE UNDERSEAT COMPARTMENT FOR A JET HELMET
- KEYLESS SYSTEM
- INNOVATIVE DESIGN WITH 3D TEXTURES
- ELECTRIC ENGINE
- DIGITAL COLOR DASHBOARD
- MOPED VERSION 45 AND 25 KM/H
- MOTORCYCLE 60 KM/H
- EXCLUSIVE GRAPHICS
- PIAGGIO MIA SYSTEM AS STANDARD



ZIP/ZIP S

50 i-get



- 50 CC I-GET 4-STROKE 3 VALVE ELECTRONIC INJECTION ENGINE
- COMFORTABLE SADDLE ADJUSTABLE TO THREE DIFFERENT HEIGHTS
- UNDERSEAT COMPARTMENT SPACIOUS ENOUGH FOR A FULL-FACE HELMET
- MAXIMUM RESPECT FOR THE ENVIRONMENT AND LOW CONSUMPTION

MYMOOVER

125 i-get



- ENGINE 125CC EURO 5
- THREE WHEELS FOR GREATER SAFETY
- SPACIOUS REAR TOP BOX WITH 261 LITRES AND 60 KG CARGO CAPACITY
- FRONT RACK WITH 20 KG CARRYING CAPACITY
- CENTRAL A3 BAG WITH 5 KG CARRYING CAPACITY
- VEHICLE TILTING SYSTEM FOR GREATER RIDING STABILITY
- PARKING BRAKE AND TILT LOCK FOR SAFE PARKING
- LARGE WINDSCREEN
- USB CHARGING PORT FOR ELECTRONIC DEVICES



HELMETS



PFJ
HELMET

○ ● ●



FCW
HELMET

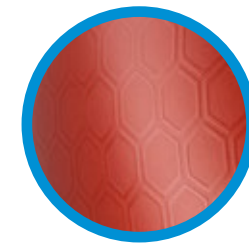


MIRROR
HELMET



MODULAR
HELMET

○ ● ●



BLUETOOTH
MIRROR
HELMET



APPAREL



◀ LONG WATERPROOF WINTER GLOVES

SHORT TOUCH-SENSITIVE GLOVES



WATERPROOF PARKA JACKET ▶

PIAGGIO 1

- Windshield
- Rack
- 28 l Top box
- Lateral stand
- Piaggio MIA

MP3

- Standard or Keyless 52 l top box
- 52 l top box backrest to match saddle colour
- 52 l top box cover to match vehicle colour
- 37 l top box
- Internal bag for 37 l top box
- Black sport top fairing
- Sport footboards
- Slip-on exhaust
- Bitubo shock absorbers
- Comfort+ leg cover
- Leg cover heating kit
- Heated hand grips
- Heated seat
- Heated accessories control unit
- Hand warmers
- Electronic anti-theft system
- Mechanical anti-theft saddle-handlebar lock
- Vehicle cover for outdoor use
- Piaggio MIA

BEVERLY

- Windshield
- Transparent or smoked flyscreen
- 36 l top box
- 52 l top box and Keyless
- 52 l top box backrest to match saddle colour
- Vehicle-coloured 52 l top box cover
- Comfort+ leg cover
- Heating module for leg cover
- Heated accessory control unit
- Heated hand grips
- Heating saddle
- Outdoor vehicle cover
- Saddle-handlebar anti-theft system
- Electronic alarm
- Piaggio MIA
- Beverly 300 hpe exhaust

MEDLEY

- Windshield
- Transparent or smoked top flyscreen
- 37 l top box kit
- 32 l top box
- Top box backrest to match saddle colour
- Leg cover
- Outdoor vehicle cover
- Saddle-handlebar anti-theft system
- Electronic alarm
- Piaggio MIA

LIBERTY

- Windshield
- Transparent or smoked flyscreen
- 32 l Top box
- Top box backrest to match saddle colour
- Leg cover
- Outdoor vehicle cover
- Saddle-handlebar anti-theft system
- Electronic alarm
- Piaggio MIA
- USB port kit
- Side stand
- Rubber mat



ACCESSORIES

	MP3 EXCLUSIVE	MP3 / MP3 SPORT	MP3 / MP3 SPORT / MP3 DEEP BLACK
	530 hpe	400 hpe	300 hpe
Engine	Single cylinder 4 stroke - hpe	Single cylinder 4 stroke - hpe	Single cylinder 4 stroke - hpe
Engine capacity	530 cc	399 cc	278 cc
Bore x Stroke	97,5mm x 71 mm	84 mm x 72 mm	75 mm x 63 mm
Max Power	32,5 kW (44,1 hp) @ 7.250 rpm	26 kW (35,3 hp) @ 7.500 rpm	19 kW (25,8 HP) @ 7,750 rpm
Max Torque	50,0 Nm @ 5.250 rpm	37,7 Nm @ 5.750 rpm	26,1 Nm @ 6.250 rpm
Valve train	Single overhead camshaft (SOHC), 4 valves	Single overhead camshaft (SOHC), 4 valves	Single overhead camshaft (SOHC), 4 valves
Fuel system	Electronic fuel injection	Electronic fuel injection	Electronic fuel injection
Cooling	Liquid	Liquid	Liquid
Front suspension	Parallelogram suspension system	Parallelogram suspension system	Articulated quadrilateral
Rear suspension	Helical springs and shock absorbers	Helical springs and shock absorbers	Double shock absorber, 4 preload position adjustment
Braking system	ABS - CBS & ASR	ABS - CBS & ASR	ABS - CBS & ASR
Front brake	Double disc Ø 258 mm	Double disc Ø 258 mm	Double disc Ø 258 mm
Rear brake	Disc Ø 240 mm	Disc Ø 240 mm	Disc Ø 240 mm
Front tyre	110/70-13" (x2)	110/70-13" (x2)	110/70-13" (x2)
Rear tyre	140/70-14"	140/70-14"	140/60-14"
Length / Width / Wheelbase	2.160mm / 815 mm / 1.550 mm	2.160mm / 815 mm / 1.580 mm	2.000mm / 800 mm / 1.450 mm
Seat height	790 mm	790 mm	790 mm
Fuel tank capacity	13,7 litres	13,7 litres	11 litres
Fuel consumption	4,0 litres per 100 km	3,8 litres per 100 km	3,2 litres per 100 km
CO₂ emissions	93 g/km	89 g/km	74 g/km
Kerb weight	280 kg	260 kg	225 kg
Emissions compliance	Euro 5	Euro 5	Euro 5

* MP3 can also be ridden with a car driver's licence, in accordance with European directive 2006/126/CE, as long as the rider is at least 21 years of age, is riding in his/her home country and respects any additional national legislation. Ask your local dealer about the specific requirements in your country.

	BEVERLY / BEVERLY S / BEVERLY DEEP BLACK	
	400 hpe	300 hpe
Engine	Single cylinder 4-stroke, 4 valves	Single cylinder 4-stroke, 4 valves
Engine capacity	399 cc	278 cc
Bore x Stroke	84 mm x 72 mm	75 mm x 63 mm
Max Power	26 kW (35 HP) at 7,500 rpm	19 kW (25.8 HP) at 8,000 rpm
Max Torque	37.7 Nm at 5,500 rpm	26 Nm at 6,250 rpm
Consumption (WMTC cycle)	25.6 km/l	30.3 km/l
CO₂ emissions	90 g/km	77 g/km
Valve train	Single overhead camshaft (SOHC) - 4 valves	Single overhead camshaft (SOHC) - 4 valves
Fuel system	Electronic injection	Electronic injection
Cooling	Liquid	Liquid
Starter	Electric	Electric
Transmission	Automatic CVT	Automatic CVT
Clutch	Oil bath automatic centrifugal multiplate clutch	Double cradle tubular pipe in high strength steel
Frame	Double cradle tubular pipe in high strength steel	Double cradle in high strength tubular steel
Front suspension	Hydraulic telescopic fork	Hydraulic telescopic fork
Rear suspension	Dual, double action hydraulic shock absorber, adjustable preload on 5 positions	Dual, double action hydraulic shock absorber, adjustable preload on 5 positions
Front brake	Ø 300 mm disc	Ø 300 mm disc
Rear brake	Ø 240 mm disc	Ø 240 mm disc
Braking system	ABS/ASR	ABS/ASR
Front tyre	Tubeless 120/70 - 16"	Tubeless 110/70 - 16"
Rear tyre	Tubeless 150/70 - 14"	Tubeless 140/70 - 14"
Length / Width / Wheelbase	2,155 mm / 800 mm / 1,550 mm	2,125 mm / 800 mm / 1,540 mm
Fuel tank capacity	12 litres	12 litres
Emissions compliance	EURO 5	EURO 5

MEDLEY / MEDLEY S		
	150 i-get	125 i-get
Engine	Single cylinder 4-stroke i-get	Single cylinder 4-stroke i-get
Engine capacity	155 cc	125 cc
Bore x Stroke	58 mm x 58.7 mm	52 mm x 58.7 mm
Max. Power	12.4 kW (16.8 HP) at 8,750 rpm	11 kW (15 HP) at 8,750 rpm
Max. Torque	15 Nm a 6,500 rpm	12 Nm a 6,500 rpm
Consumption (WMTC cycle)	41 km/l	42 km/l
CO₂ emissions	59 g/km	59 g/km
Valve train	Single overhead camshaft (SOHC) - 4 valves	Single overhead camshaft (SOHC) - 4 valves
Fuel System	Electronic injection	Electronic injection
Cooling	Liquid	Liquid
Starter	Start & Stop system	Start & Stop system
Transmission	Automatic CVT	Automatic CVT
Clutch	Automatic centrifugal dry clutch	Automatic centrifugal dry clutch
Frame	Single cradle tubular steel structure with pressed steel reinforcements	Single cradle tubular steel structure with pressed steel reinforcements
Front suspension	Hydraulic telescopic fork	Hydraulic telescopic fork
Rear suspension	Dual, double action hydraulic shock absorber with adjustable spring preload to 5 positions	Dual, double action hydraulic shock absorber with adjustable spring preload to 5 positions
Front brake	Ø 260 mm disc	Ø 260 mm disc
Rear brake	Ø 240 mm disc	Ø 240 mm disc
Front tyre	Tubeless 100 / 80-16"	Tubeless 100 / 80 -16"
Rear tyre	Tubeless 120 / 70 - 14"	Tubeless 120 / 70 - 14"
ABS	ABS/ASR vale anche per il 125	ABS/ASR vale anche per il 125
Length / Width / Wheelbase	2,020 mm / 705 mm / 1,395 mm	2,020 mm / 705 mm / 1,395 mm
Saddle height	799 mm	799 mm
Fuel tank capacity	7 litres	7 litres
Emissions compliance	EURO 5	EURO 5

LIBERTY / LIBERTY S			
	150 i-get	125 i-get	50 i-get
Engine	Single cylinder 4-stroke i-get	single cylinder 4-stroke i-get	single cylinder 4-stroke i-get
Engine capacity	155 cc	124 cc	49 cc
Bore x Stroke	58 mm x 58.6 mm	52 mm x 58.6 mm	39 mm x 41.4 mm
Max Power	9.3 kW (12,6 HP) a 7,500 rpm	8,1 kW (10.9 HP) a 8,250 rpm	2.2 kW (3 HP) a 7,750 rpm
Max Torque	12,8 Nm at 6,500 rpm	10,75 Nm at 6,500 rpm	2.9 Nm at 6,500 rpm
Consumption (WMTC)	36.9 Km/l	40 Km/l	40 km/l
CO₂ emissions	63 g/Km	60 g/Km	57 g/km
Valve train	Single overhead camshaft, 3 valves (2 intake, 1 exhaust)	Single overhead camshaft, 3 valves (2 intake, 1 exhaust)	Single overhead camshaft, 3 valves (2 intake, 1 exhaust)
Cooling	Air	Air	Air
Fuel system	Electronic injection	Electronic injection	Electronic injection
Starter	Electric	Electric	Electric
Transmission	Automatic CVT	Automatic CVT	Automatic CVT
Clutch	Automatic centrifugal dry clutch	Automatic centrifugal dry clutch	Automatic centrifugal dry clutch
Frame	High resistance tubular steel	High resistance tubular steel	High resistance tubular steel
Front suspension	Telescopic hydraulic fork	Telescopic hydraulic fork	Telescopic hydraulic fork
Rear suspension	Single hydraulic shock absorber with 5-position preload adjustment	Single hydraulic shock absorber with 5-position preload adjustment	Single hydraulic shock absorber
Front tyre	Tubeless 90 / 80 - 16"	Tubeless 90 / 80 - 16"	Tubeless 90 / 80 - 16"
Rear tyre	Tubeless 100 / 80 - 14"	Tubeless 100 / 80 - 14"	Tubeless 100 / 80 - 14"
Front brake	Ø 240 mm disc	Ø 240 mm disc	Ø 240 mm disc
Rear brake	Ø 140 mm drum	Ø 140 mm drum	Ø 140 mm drum
ABS	ABS at the front wheel only	ABS at the front wheel only	-
Length / Width / Wheelbase	1,945 mm / 690 mm / 1,340 mm	1,945 mm / 690 mm / 1,340 mm	1,945 mm / 690 mm / 1,370 mm
Seat height	790 mm	790 mm	780 mm
Fuel tank capacity	6 litres	6 litres	6 litres
Emissions compliance	EURO 5	EURO 5	EURO 5

	PIAGGIO 1	PIAGGIO 1+	PIAGGIO 1 ACTIVE
Engine	Electric hub motor	Electric hub motor	Electric hub motor
Battery	1.4 kWh	2.3 kWh	2.3 kWh
Voltage	48 V	48 V	48 V
Capacity	29 Ah	48 Ah	48 Ah
Power	1.2 kW (2.3 kW peak)	2,4kW (3,0 kW peak)	2.8 kW (3.0 kW peak)
Max Speed	45 km/h	45 km/h	60 km/h
Torque	125 Nm	125 Nm	105 Nm
Cooling	Air	Air	Air
Starter	Keyless	Keyless	Keyless
Chassis	Single cradle structure of steel tubes and stamped sheet metal	Single cradle structure of steel tubes and stamped sheet metal	Single cradle structure of steel tubes and stamped sheet metal
Front suspension	Single-sided suspension (single shock absorber)	Single-sided suspension (single shock absorber)	Single-sided suspension (single shock absorber)
Front suspension	Double hydraulic shock absorber	Double hydraulic shock absorber	Double hydraulic shock absorber
Front brake	Disc Ø 175 mm	Disc Ø 175 mm	Disc Ø 175 mm (Combined Braking System front and rear, CBS)
Rear brake	Disc Ø 175 mm	Disc Ø 175 mm	Disc Ø 175 mm (Combined Braking System front and rear, CBS)
Front tyre	Tubeless 100/80 - 10"	Tubeless 100/80 - 10"	Tubeless 100/80 - 10"
Rear tyre	Tubeless 100/80 - 10"	Tubeless 100/80 - 10"	Tubeless 100/80 - 10"
Seat height	770 mm	770 mm	770 mm
Range ECO	55 km*	100 km*	85 km*
Length / Width / Wheelbase	1.680 mm / 750 mm / 1.220 mm	1.680 mm / 750 mm / 1.220 mm	1.680 mm / 750 mm / 1.220 mm
Weight (without battery)	75 kg	75 kg	79 kg
Battery weight	10 kg	15 kg	15 kg
Emissions compliance	EURO 5	EURO 5	EURO 5

*The measured data are based on road test at constant speed ("wide open throttle") and can be affected by different conditions such as load, temperature, wind speed, road surface and operating habits. Battery capacity may decay up to 20% due to different factors such as number of recharging cycles and battery usage.

	ZIP / ZIP S	MYMOOVER
	50 i-get	125 i-get
Engine	Single cylinder 4-stroke i-get	Single cylinder 4-stroke i-get
Engine capacity	49 cc	125 cc
Bore per stroke	39 mm x 41.4 mm	52 mm x 58.7 mm
Max Power	2.1 kW (2.8 HP) at 7,250 rpm	8 kW (10.9 HP) at 8,750 rpm
Max Torque	2.8 Nm at 6,100 rpm	10 Nm at 5,250 rpm
Consumption (WMTC cycle)	41.6 km/l (WMTC cycle)	37 km/l
CO₂ emissions	57 g/km	67 g/km
Distribution	Single overhead camshaft, 3 valves	Single overhead camshaft, 4 valves
Fuel system	Electronic injection	Electronic injection
Cooling	Air	Liquid
Starter	Electric	Electric
Transmission	Automatic CVT	Automatic CVT
Clutch	Automatic centrifugal dry clutch	Automatic centrifugal dry clutch
Frame	Single cradle structure in high resistance tubular steel	Single cradle structure in high resistance tubular steel
Front suspension	Hydraulic telescopic fork	Hydraulic telescopic fork
Rear suspension	Single hydraulic shock absorber	Single hydraulic shock absorber
Front tyre	100/80 - 10"	Disco Ø 240 mm
Rear tyre	120/70 - 10"	Ø 200 mm 2 x disc
Front brake	Ø 175 mm disc	90/80 - 16"
Rear brake	Ø 110 mm drum	2 x 90/90 - 12"
Length / Width / Wheelbase	1,700 mm / 670 mm / 1,230 mm	2,155 mm / 795 mm / 1,380 mm
Seat Height	Adjustable: 750 mm - 765 mm - 780 mm	760 mm
Fuel tank capacity	6.6 litres	10 litres
Emissions compliance	EURO 5	EURO 5

SERVICES

X-CARE + MAINTENANCE

Thanks to X-Care+ Maintenance, the ordinary maintenance packs, you can ride your Piaggio scooter with peace of mind, in the world. Created to meet various needs, by choosing and purchasing one of the available packages, you will receive periodic maintenance as required in the use and maintenance manual.

- 2 YEARS** 2 service operations (1,000 - 10,000 km)
- 3 YEARS** 3 service operations (1,000 - 10,000 - 20,000 km)
- 4 YEARS** 4 service operations (1,000 - 10,000 - 20,000 - 30,000 km)

ONLY FOR PIAGGIO 1

- 24 months/10,000 km and 3 maintenance operations
- 36 months/20,000 km and 5 maintenance operations
- 38 months/30,000 km and 7 maintenance operations

In addition to X-Care+ Maintenance, two different types of vehicle checks will be available:

Battery Check - Vehicle check with focus on the battery

Check & Tyre - Vehicle check with focus on battery and engine and replacement of rear tyre.

X-CARE + EXTENDED WARRANTY

The X-Care+ Extended Warranty completes the dedicated services on offer, protecting your peace of mind when it comes to your scooter and allowing you to travel worry-free with a 1 or 2 year warranty which includes roadside assistance:

- Coverage of repair costs for faults due to manufacturing or assembly defects on parts
- Replacement of any damaged parts with original spare parts, labour included
- Roadside assistance including depannage and towing service
- Specialised, certified Piaggio Group Service assistance
- Maintenance of the retail value of your used vehicle in case you decide to sell
- Coverage throughout Europe

The services described can be activated on models with displacement greater than 50 cc. Ask your dealership or your authorised service centre for full details of the services and coverage available in your country.

The company reserves the right to make technical and aesthetic changes at any time. Ride carefully, always wearing a helmet and and proper attire. Always comply with the rules of the road and respect the environment. Read the operating and maintenance manual carefully. Always ask for original and approved spare parts in accordance with prevailing standards. See your Official Piaggio Dealership and Authorised Retailers for a secure purchase and guaranteed service support. Original Piaggio spare parts are a guarantee of quality and ensure that vehicle performance remains unaltered.



PIAGGIO®

www.piaggio.com