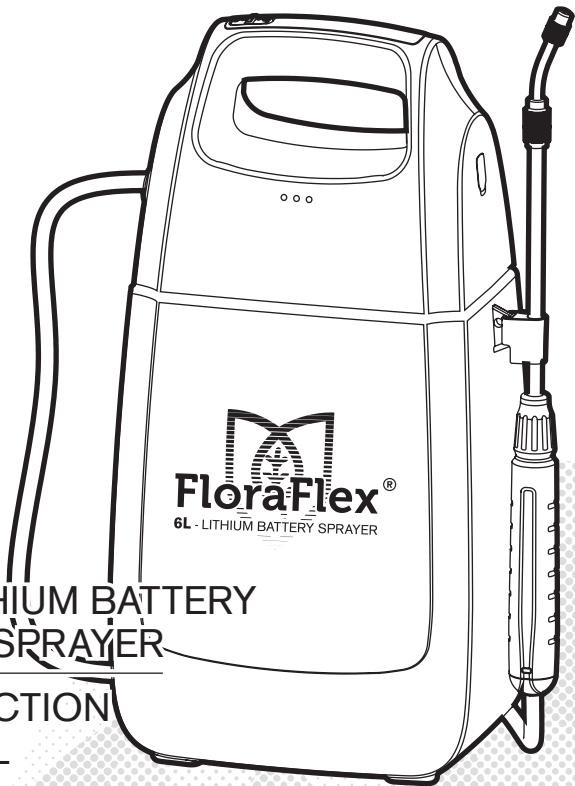




# FloraFlex<sup>®</sup>

Helping you grow with your garden.<sup>®</sup>



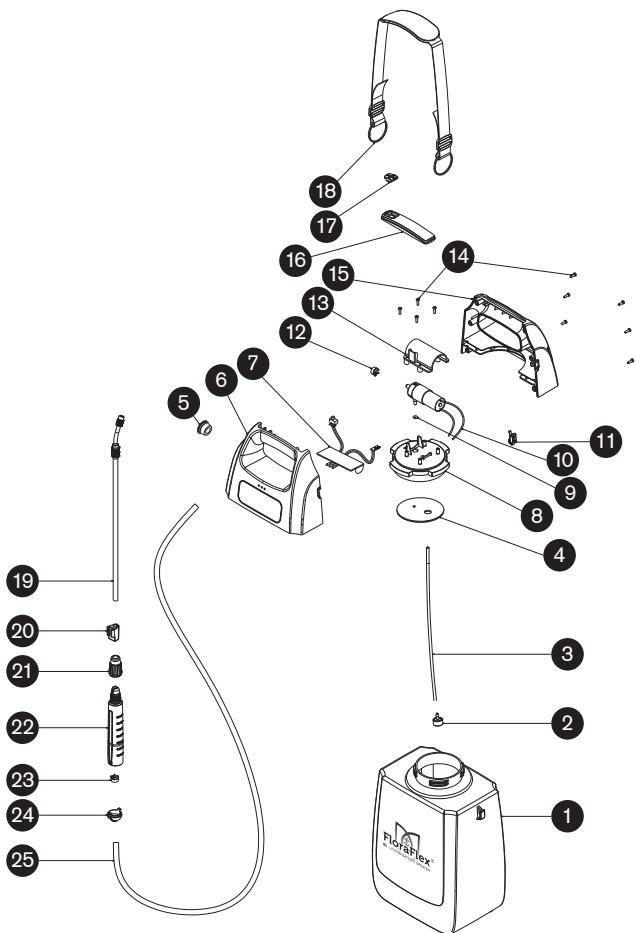
**6L - LITHIUM BATTERY  
FLORA SPRAYER**

**INSTRUCTION  
MANUAL**

**WARNING:** FOR YOUR PERSONAL SAFETY, READ INSTRUCTIONS BEFORE USING. SAVE THESE INSTRUCTIONS FOR FUTURE REFERENCE

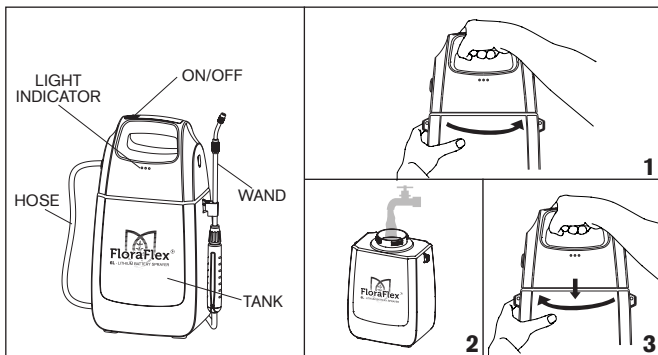
<b>PART NO.</b>	<b>DESCRIPTION</b>	<b>QTY</b>
1	TANK	1
2	FILTER	1
3	FEED PIPE	1
4	GASKET	1
5	TPE PLUG	1
6	COVER - LEFT	1
7	CIRCUIT BOARD	1
8	SCREW COVER	1
9	O RING	1
10	PUMP	1
11	WATERPROOF CHARGER COVER	1
12	PLASTIC HOOPS	1
13	MAINTANANCE COVER	1
14	M3 SCREW	10
15	COVER - RIGHT	1
16	HANDLE PLATE	1
17	WATERPROOF SWITCH COVER	1
18	STRAP	1
19	WAND	1
20	WAND HOLDER	1
21	HANDLE NUT	1
22	HANDLE	1
23	SINGLE EAR HOSE HOOPS	1
24	HANDLE COVER	1
25	HOSE	1

# SPRAYER ASSEMBLY:



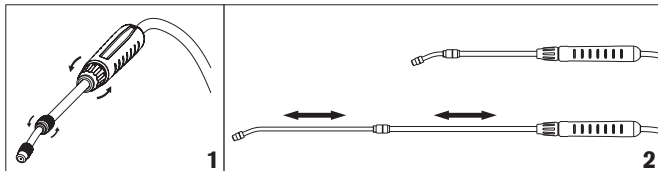
# ASSEMBLY INSTRUCTIONS:

1. Remove sprayer cap. Twist counterclockwise to remove.
2. Fill the FloraSprayer reservoir with your desired noncorrosive liquid.
3. Replace sprayer cap and twist to seal (do not over-tighten).



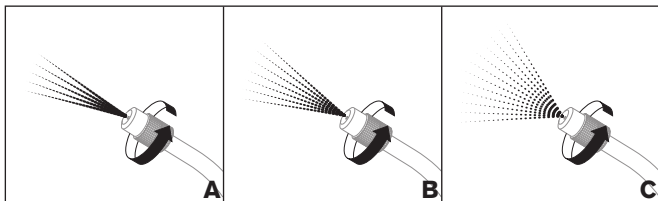
# WAND INSTRUCTIONS:

1. To extend the wand twist middle and lower wand locks.
2. Pull wand to desired length.



# USE INSTRUCTIONS:

1. Rotate sprayer nozzle to the left or right to adjust flow. Flow can be adjusted continuously from a A. full stream, B. medium spray, to a C. fine mist.



# SAFETY INSTRUCTIONS:

The FloraSprayer's lithium battery should only be charged indoors. Never charge outdoors

The FloraSprayer's charger is only be used with a suitable lithium battery. Any other usage is forbidden. To avoid overcharging, which will shorten service life, remove charger from outlet when charge is complete.

If you suspect your FloraSprayer's battery is damaged or not working properly do not use and contact FloraFlex or your distributor.

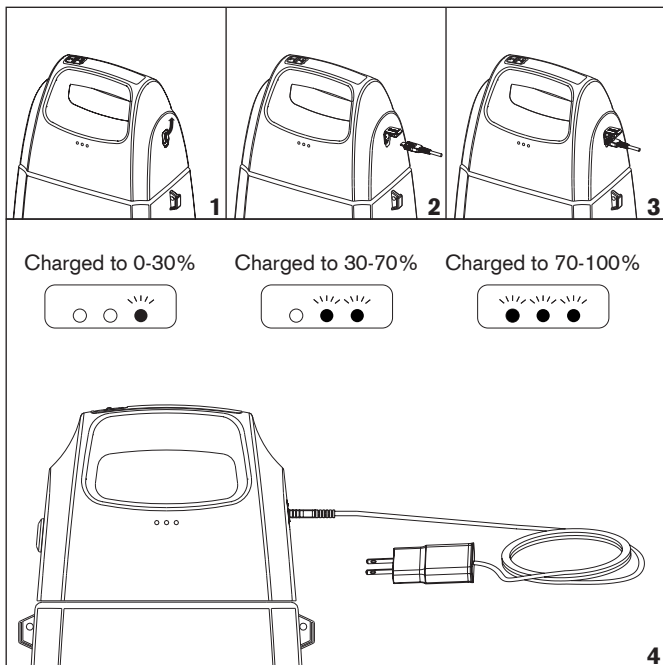
After long periods of non-use the FloraSprayer's battery will gradually lose charge. For best results, charge your FloraSprayer every six months. This will prevent the battery from becoming fully depleted, which will degrade the battery over time.

If the FloraSprayer's charger is connected to power and to the FloraSprayer charging port and the LED does not illuminate immediately unplug and discontinue use.

Store in a cool and dry environment at room temperature (15 -35 C or 60-95 F) Do not exceed 65% humidity.

# CHARGING INSTRUCTIONS:

1. Flip up charger port cover to expose Micro USB port.
2. Insert Micro USB cable from the charger in the correct orientation.
3. The FloraSprayer's LED will light to indicate the unit is charging.
4. As the FloraSprayer's battery charges, the LED array will shift from 1 to 3 lit blue LEDs. 3 blue LEDs lit indicates that the unit is fully charged.



# PRODUCT INFO/TECHNICAL DATA:

Item No. - **1531**

Total Capacity - **6L**

Voltage - **5V**

Current Flow - **0.8A ~ 1A**

Battery Capacity - **2.5 Ah**

Work Time - **120 min**

Charging Time - **240 min**

Misting Flow - **0.3 L/min**

## TROUBLESHOOTING:

<b>Problem</b>	<b>Causes</b>	<b>Fix</b>
The motor fails to start after being powered on	<ol style="list-style-type: none"><li>1. The power cable has become disconnected during charging</li><li>2. The battery is out of power</li><li>3. The power switch has been damaged</li></ol>	<ol style="list-style-type: none"><li>1. Dismantle the cover to connect the cable</li><li>2. Charge your FloraSprayer</li><li>3. Replace the switch (contact FloraFlex or your distributor)</li></ol>
Water is not flowing	Filter maybe clogged	Detach tank, remove filter, and clean

# WARNINGS:

1. Do not expose battery to seawater or freshwater
2. Do not expose battery to fire or heat
3. Do not connect the battery cathode to a circuit directly
4. Do not store FloraSprayer near a heat source