

Job Name:	
Tag#	



Submittal Data Sheet	2MXL18QMVJUA
2 Port, 1.5-Ton Outdoor Heat Pump	



Efficiency				
	SEER	EER	HSPF	COP
Non-Ducted	17	12.7	10.3	3.33
Ducted	14	10.1	8.2	3.14
Mixed	15.5	11.4	9.25	3.24

Performance	
Cooling (Btu/hr)	
Rated	18,000
Operating Range	14°F – 115°F
Rated Cooling Conditions:	
	Indoor: 80°F DB/67°F WB Outdoor: 95°F DB/75°F WB
Heating (Btu/hr)	
1: @ 47° Rated	18,900
2: @ 5°: Capacity / COP	18,930 / 2.12
Operating Range	-13°F – 60°F
1: Rated Heating Conditions:	
	Indoor: 70°F DB/60°F WB Outdoor: 47°F DB/43°F WB
2: Heating Conditions; Compressor	
	Indoor: 70°F DB/60°F WB Operating at Max Frequency: Outdoor: 5°F DB/5°F WB

Complete warranty details available from your local dealer or at www.daikincomfort.com. To receive the 12-Year Parts Limited Warranty, online registration must be completed within 60 days of installation. Online registration is not required in California or Quebec. *If product is installed in a commercial application, limited warranty period is 5 years.*

Electrical		
	208/60/1	230/60/1
System MCA	17.1	17.1
System MFA	20	20
Compressor RLA	15.5	15.5
Outdoor fan motor FLA	.33	.33
Outdoor fan motor W	51	51

MFA: Max. fuse amps **MCA:** Min. circuit amps (A) **FLA:** Full load amps (A)
RLA: Rated load amps (A) **W:** Fan motor rated output (W)

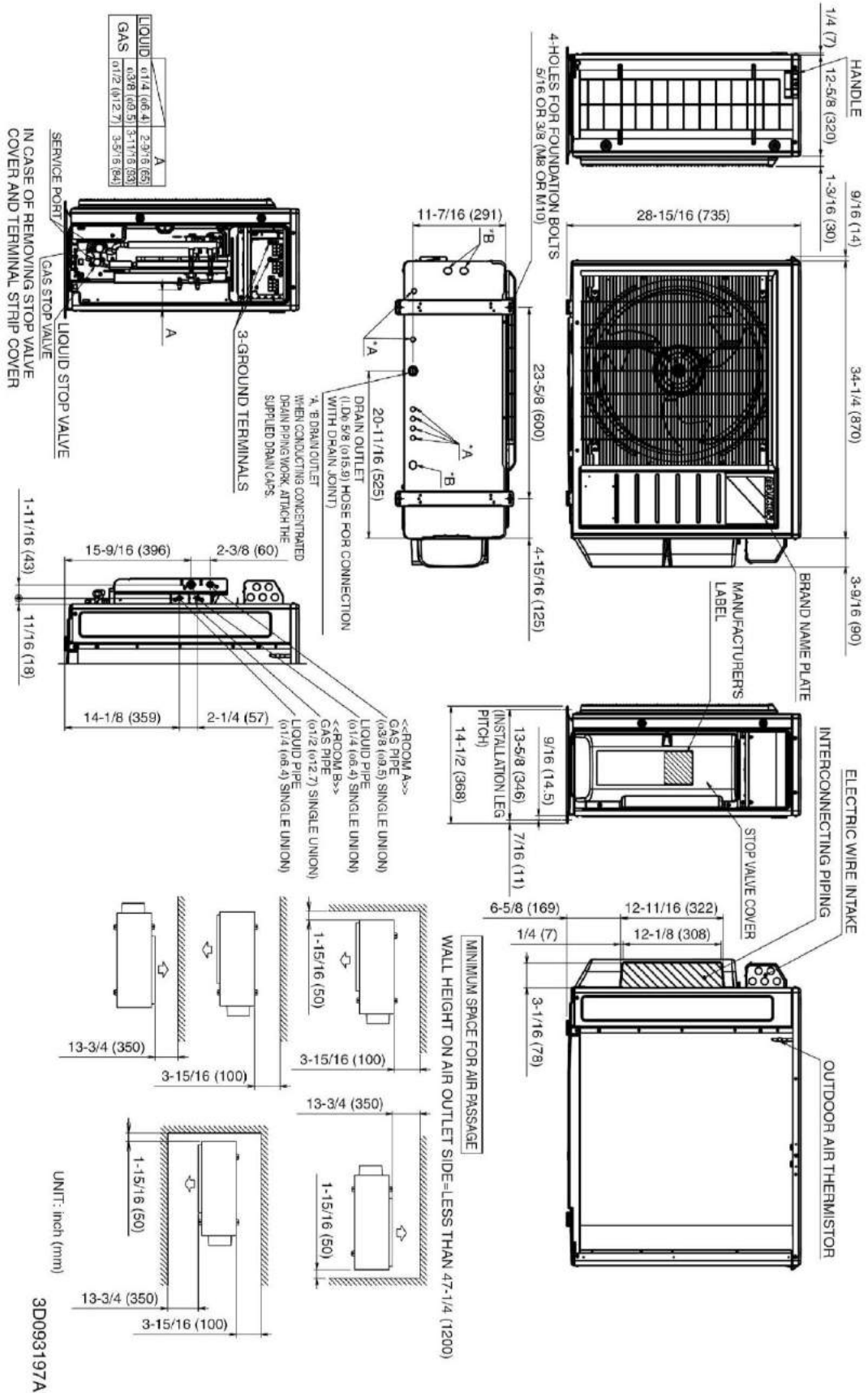
Outdoor Specifications				
Compressor	Hermetically Sealed Swing Type			
Refrigerant	R-410A			
Factory Charge (Lbs)	6.17			
Refrigerant Oil	PVE (FVC50K)			
Airflow Rate (cfm)	Cooling		Heating	
	H	2,150	H	1,963
	M	2,150	M	1,963
	L	1,949	L	1,006
Sound Pressure Level (dBA)	50 / 51			
Dimensions (H x W x D) (in)	28-15/16 x 34-1/4 x 12-5/8			
Weight (Lbs)	139			

Piping	
Liquid (in)	¼ x 2
Gas (in)	3/8 x 1, ½ x 1
Drain (in)	5/8
Max. System Piping Length (ft)	164
Max. Interunit Piping Length (ft)	82
Max. Height Difference – IDU to ODU (ft)	49.25
Max. Height Difference – IDU to IDU (ft)	24.625
Chargeless (ft)	98.4
Additional Charge of Refrigerant (oz/ft)	.21

Daikin North America LLC 5151 San Felipe, Suite 500 Houston, TX 77056

(Daikin's products are subject to continuous improvements. Daikin reserves the right to modify product design, specifications and information in this data sheet without notice and without incurring any obligations)

2MXL18QMVJUA Dimensional Data



Daikin North America LLC 5151 San Felipe, Suite 500 Houston, TX 77056

(Daikin's products are subject to continuous improvements. Daikin reserves the right to modify product design, specifications and information in this data sheet without notice and without incurring any obligations)



Included	Part Number	Description
	DACA-WB-3	Mounting Bracket
	KEH063A4E	Drain Pan Heater 2/3/4MXS & 2/3MXL
	KPW063B4	Air Adjustment Grille
	KKG063A42	Back protection wire net
	KKG063A43	Side protection wire net
	KPS063A41	Snow hood (intake side plate)
	KPS063A44	Snow hood (intake rear plate)
	KPS063A47	Snow hood (outlet)

Job Name:	
Tag#	



Submittal Data Sheet	3MXL24RMVJUA
3 Port, 2-Ton Outdoor Heat Pump	



Efficiency				
	SEER	EER	HSPF	COP
Non-Ducted	18	12.7	12.5	3.41
Ducted	14	9.9	8.2	3.26
Mixed	15.95	11.3	10.35	3.33

Performance	
Cooling (Btu/hr)	
Rated	24,000
Operating Range	14°F – 115°F
Rated Cooling Conditions:	
Indoor:	80°F DB/67°F WB
Outdoor:	95°F DB/75°F WB
Heating (Btu/hr)	
1: @ 47° Rated	24,000
2: @ 5°: Capacity / COP	21,700 / 2.17
Operating Range	-13°F – 60°F
1: Rated Heating Conditions:	
Indoor:	70°F DB/60°F WB
Outdoor:	47°F DB/43°F WB
2: Heating Conditions; Compressor	
Indoor:	70°F DB/60°F WB
Operating at Max Frequency:	
Outdoor:	5°F DB/5°F WB

Complete warranty details available from your local dealer or at www.daikincomfort.com. To receive the 12-Year Parts Limited Warranty, online registration must be completed within 60 days of installation. Online registration is not required in California or Quebec. *If product is installed in a commercial application, limited warranty period is 5 years.*

Outdoor Specifications				
Compressor	Hermetically Sealed Swing Type			
Refrigerant	R-410A			
Factory Charge (Lbs)	6.17			
Refrigerant Oil	PVE (FVC50K)			
Airflow Rate (cfm)	Cooling		Heating	
	H	2,094	H	1,886
	M	2,094	M	1,780
	L	1,977	L	1,006
Sound Pressure Level (dBA)	52 / 54			
Dimensions (H x W x D) (in)	28-15/16 x 34-1/4 x 12-5/8			
Weight (Lbs)	140			

Electrical		
	208/60/1	230/60/1
System MCA	22.6	22.6
System MFA	25	25
Compressor RLA	17.5	17.5
Outdoor fan motor FLA	.42	.42
Outdoor fan motor W	122	122

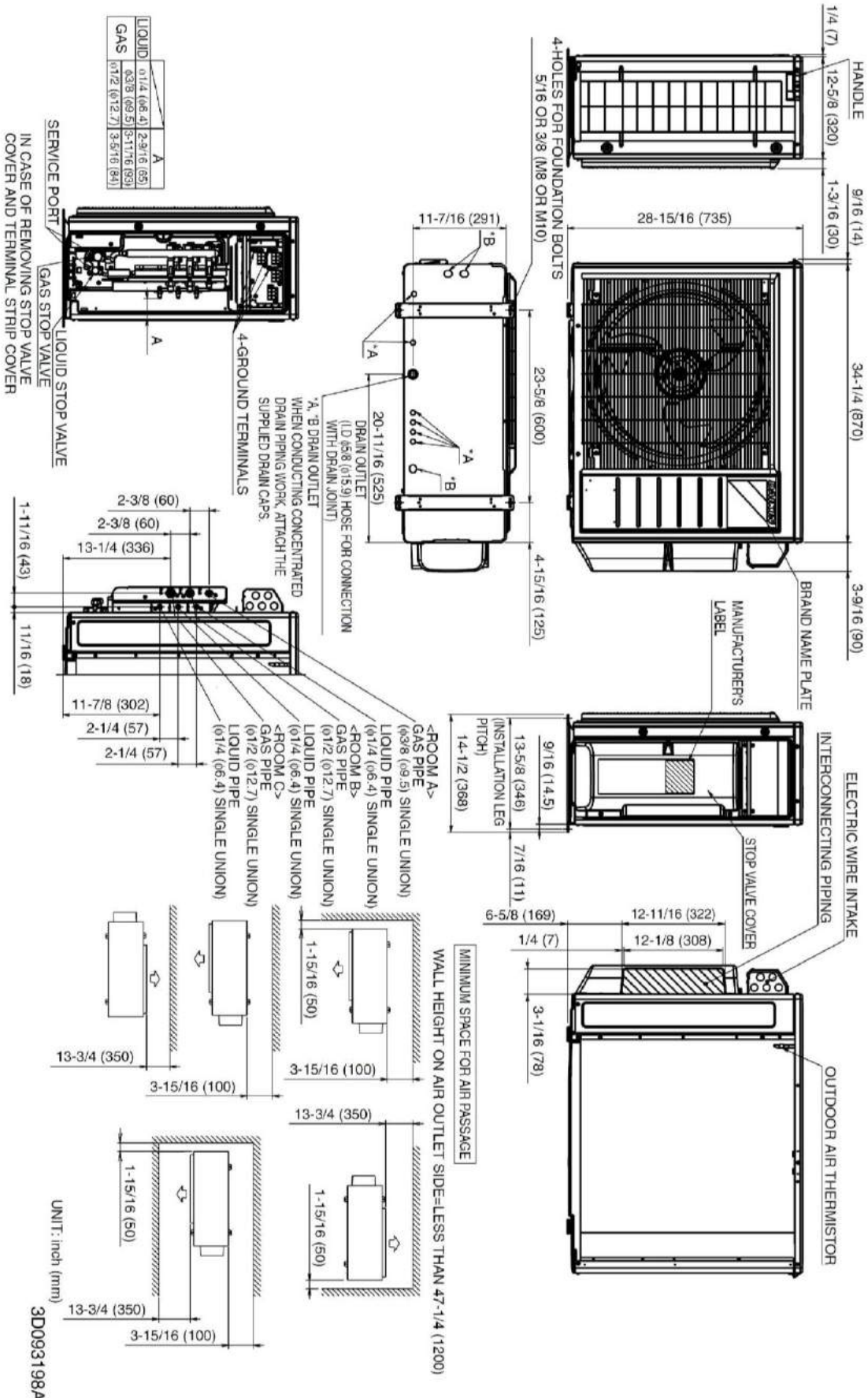
MFA: Max. fuse amps **MCA:** Min. circuit amps (A) **FLA:** Full load amps (A)
RLA: Rated load amps (A) **W:** Fan motor rated output (W)

Piping	
Liquid (in)	¼ x 3
Gas (in)	3/8 x 1,
	½ x 2
Drain (in)	5/8
Max. System Piping Length (ft)	230
Max. Interunit Piping Length (ft)	82
Max. Height Difference – IDU to ODU (ft)	49.25
Max. Height Difference – IDU to IDU (ft)	24.625
Chargeless (ft)	131.2
Additional Charge of Refrigerant (oz/ft)	.21

Daikin North America LLC 5151 San Felipe, Suite 500 Houston, TX 77056

(Daikin's products are subject to continuous improvements. Daikin reserves the right to modify product design, specifications and information in this data sheet without notice and without incurring any obligations)

3MXL24RMVJUA Dimensional Data



(Daikin's products are subject to continuous improvements. Daikin reserves the right to modify product design, specifications and information in this data sheet without notice and without incurring any obligations)

Included	Part Number	Description
	DACA-WB-3	Mounting Bracket
	KEH063A4E	Drain Pan Heater 2/3/4MXS & 2/3MXL
	KPW063B4	Air Adjustment Grille
	KKG063A42	Back protection wire net
	KKG063A43	Side protection wire net
	KPS063A41	Snow hood (intake side plate)
	KPS063A44	Snow hood (intake rear plate)
	KPS063A47	Snow hood (outlet)

Job Name:	
Tag#	



Submittal Data Sheet	4MXL36TVJU
4 Port, 3-Ton Outdoor Heat Pump	



Efficiency				
	SEER	EER	HSPF	COP
Non-Ducted	21.7	12.5	11.2	4.26
Ducted	16.9	11.0	9.1	3.5
Mixed	19.3	11.75	10.15	3.88

Performance	
Cooling (Btu/hr)	
Rated	34,400
Operating Range	14°F – 115°F
Rated Cooling Conditions:	
	Indoor: 80°F DB/67°F WB Outdoor: 95°F DB/75°F WB
Heating (Btu/hr)	
1: @ 47° Rated	36,600
2: @ 5°: Capacity / COP	36,600 / 2.0
Operating Range	-13°F – 60°F
1: Rated Heating Conditions:	
	Indoor: 70°F DB/60°F WB Outdoor: 47°F DB/43°F WB
2: Heating Conditions; Compressor	
	Indoor: 70°F DB/60°F WB Outdoor: 5°F DB/5°F WB
Operating at Max Frequency:	
	Outdoor: 5°F DB/5°F WB

Complete warranty details available from your local dealer or at www.daikincomfort.com. To receive the 12-Year Parts Limited Warranty, online registration must be completed within 60 days of installation. Online registration is not required in California or Quebec. *If product is installed in a commercial application, limited warranty period is 5 years.*

Electrical		
	208/60/1	230/60/1
System MCA	32.5	32.5
System MFA	35	35
Compressor RLA	27	27
Outdoor fan motor FLA	1.15	1.15
Outdoor fan motor W	84	84

MFA: Max. fuse amps **MCA:** Min. circuit amps (A) **FLA:** Full load amps (A)
RLA: Rated load amps (A) **W:** Fan motor rated output (W)

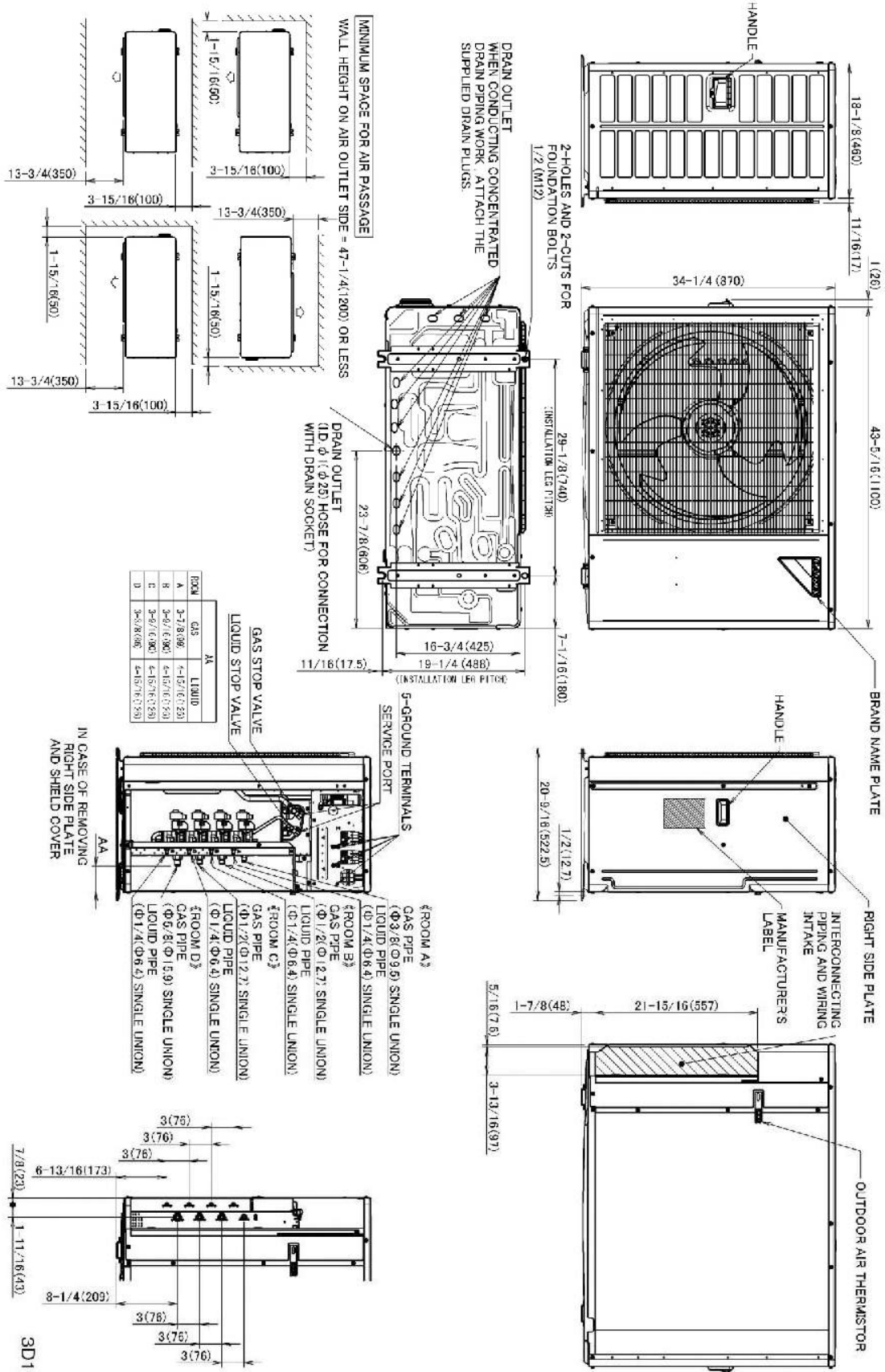
Outdoor Specifications				
Compressor	Hermetically Sealed Swing Type			
Refrigerant	R-410A			
Factory Charge (Lbs)	8.60			
Refrigerant Oil	PVE (FVC50K)			
Airflow Rate (cfm)	Cooling		Heating	
	H	3,684	H	3,356
	M	3,029	M	3,138
	L	2,756	L	1,500
Sound Pressure Level (dBA)	53 / 55			
Dimensions (H × W × D) (in)	34-1/4 × 43-5/16 × 18-1/8			
Weight (Lbs)	214			

Piping	
Liquid (in)	¼ x 4
Gas (in)	3/8 x 1,
	½ x 2,
	5/8 x 1
Drain (in)	1
Max. System Piping Length (ft)	230
Max. Interunit Piping Length (ft)	98
Max. Height Difference – IDU to ODU (ft)	49.25
Max. Height Difference – IDU to IDU (ft)	24.625
Chargeless (ft)	131.625
Additional Charge of Refrigerant (oz/ft)	.21

Daikin North America LLC 5151 San Felipe, Suite 500 Houston, TX 77056

(Daikin's products are subject to continuous improvements. Daikin reserves the right to modify product design, specifications and information in this data sheet without notice and without incurring any obligations)

4MXL36TVJU Dimensional Data



3D118338A

Included	Part Number	Description
	KEH082A41	Drain Pan Heater
	KPW082A41	Air Adjustment Grille
	KKG082A41	Back protection wire net