

Job Name:	
Tag#	



## Submittal Data Sheet

## FVXS09NVJU / RXL09QMVJU

.75-Ton Floor Mounted Heat Pump System



Complete warranty details available from your local dealer or at [www.daikincomfort.com](http://www.daikincomfort.com). To receive the 12-Year Parts Limited Warranty, online registration must be completed within 60 days of installation. Online registration is not required in California or Quebec. *If product is installed in a commercial application, limited warranty period is 5 years.*

### Indoor Specifications

Airflow Rate (cfm)	Cooling		Heating	
	H	M	H	M
	L	SL	L	SL
	290	230	311	244
	169	145	177	155
Sound (dBA) H / M / L / SL	38 / 32 / 26 / 23		38 / 32 / 26 / 23	
Dimensions (H x W x D) (in)	23-5/8 x 27-9/16 x 8-1/4			
Weight (Lbs)	31			

### Outdoor Specifications

Compressor	Hermetically Sealed Swing Type			
Refrigerant	R-410A			
Factory Charge (Lbs)	2.09			
Refrigerant Oil	PVE (FVC50K)			
Airflow Rate (cfm)	Cooling		Heating	
	H	M	H	M
	L	SL	L	SL
	1,105	865	922	777
Sound Pressure Level (dBA)	49			
Dimensions (H x W x D) (in)	21-5/8 x 26-9/16 x 11-13/16			
Weight (Lbs)	60			

### Efficiency

Cooling		Heating	
SEER	20.0	HSPF	11.7
EER	12.5	COP	4.10

### Performance

Cooling (Btu/hr)	
Rated (Min/Max)	9,000 (4,400 / 10,200)
Sensible @ AHRI	7,240
Moisture Removal gal/h	.32
Standard Operating Range	50°F – 115°F
Extended Operating Range*	-4°F – 115°F

Rated Cooling Conditions: Indoor: 80°F DB/67°F WB  
Outdoor: 95°F DB/75°F WB

\*With field settings and wind baffle

Heating (Btu/hr)	
1: @ 47° Rated (Min/Max)	10,100 (4,400 / 14,300)
2: @ 17° Rated	6,200
3: @ 5° Max: Capacity / COP	10,100 / 2.14
Operating Range	-13°F – 60°F

1: Rated Heating Conditions: Indoor: 70°F DB/60°F WB  
Outdoor: 47°F DB/43°F WB

2: Rated Heating Conditions: Indoor: 70°F DB/60°F WB  
Outdoor: 17°F DB/15°F WB

3: Heating Conditions; Compressor Operating at Max Frequency: Indoor: 70°F DB/60°F WB  
Outdoor: 5°F DB/5°F WB

### Electrical

	208/60/1	230/60/1
System MCA	9.5	9.5
System MFA	15	15
Compressor RLA	8.5	8.5
Outdoor fan motor FLA	.15	.15
Outdoor fan motor W	18	18
Indoor fan motor FLA	.21	.21
Indoor fan motor W	12	12

MFA: Max. fuse amps MCA: Min. circuit amps (A) FLA: Full load amps (A)  
RLA: Rated load amps (A) W: Fan motor rated output (W)

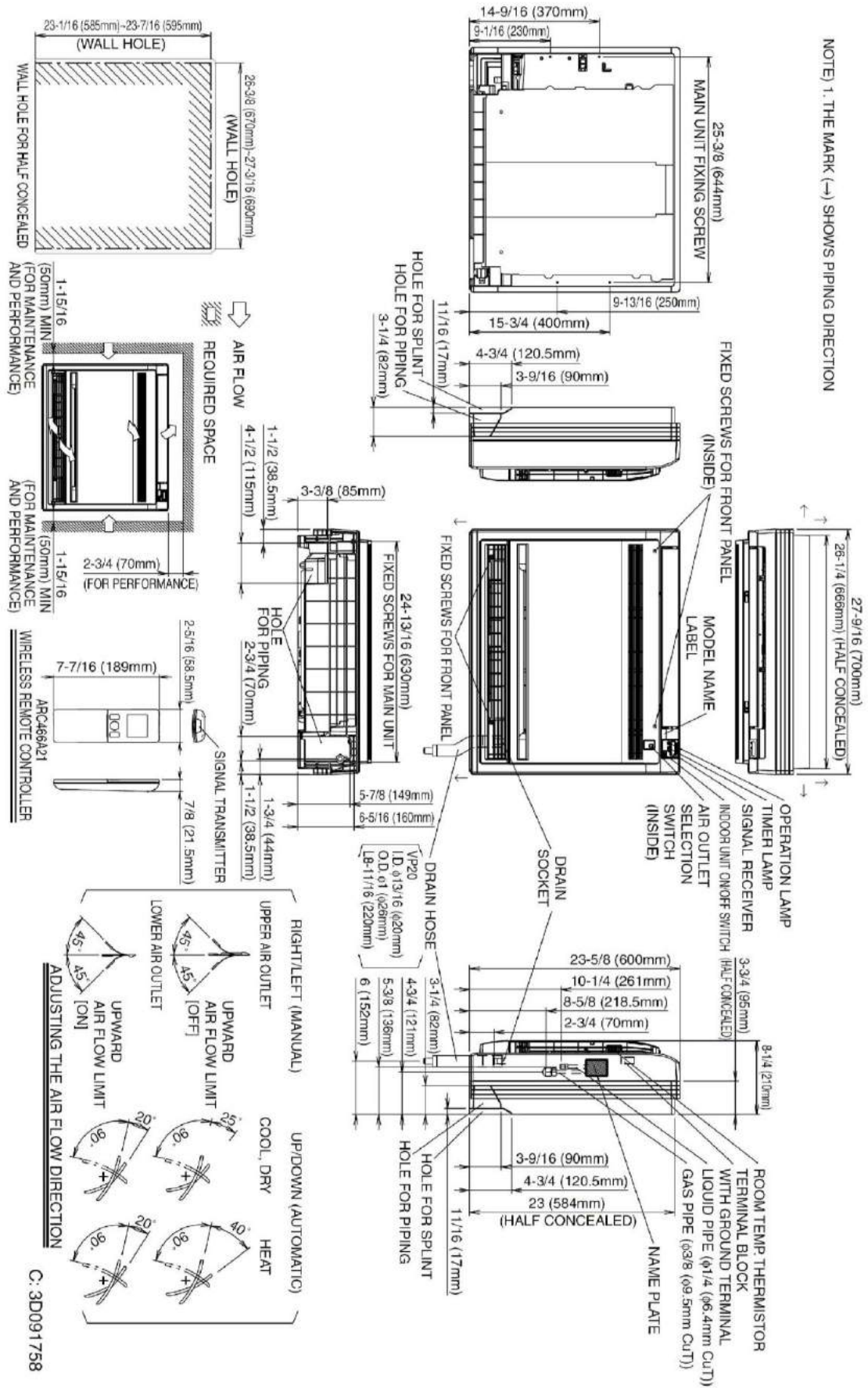
### Piping

Liquid (in)	1/4
Gas (in)	3/8
Drain (in)	13/16
Max. Interunit Piping Length (ft)	65.625
Max. Interunit Height Difference (ft)	49.25
Chargeless (ft)	32.8
Additional Charge of Refrigerant (oz/ft)	.21

Daikin North America LLC 5151 San Felipe, Suite 500 Houston, TX 77056

(Daikin's products are subject to continuous improvements. Daikin reserves the right to modify product design, specifications and information in this data sheet without notice and without incurring any obligations)

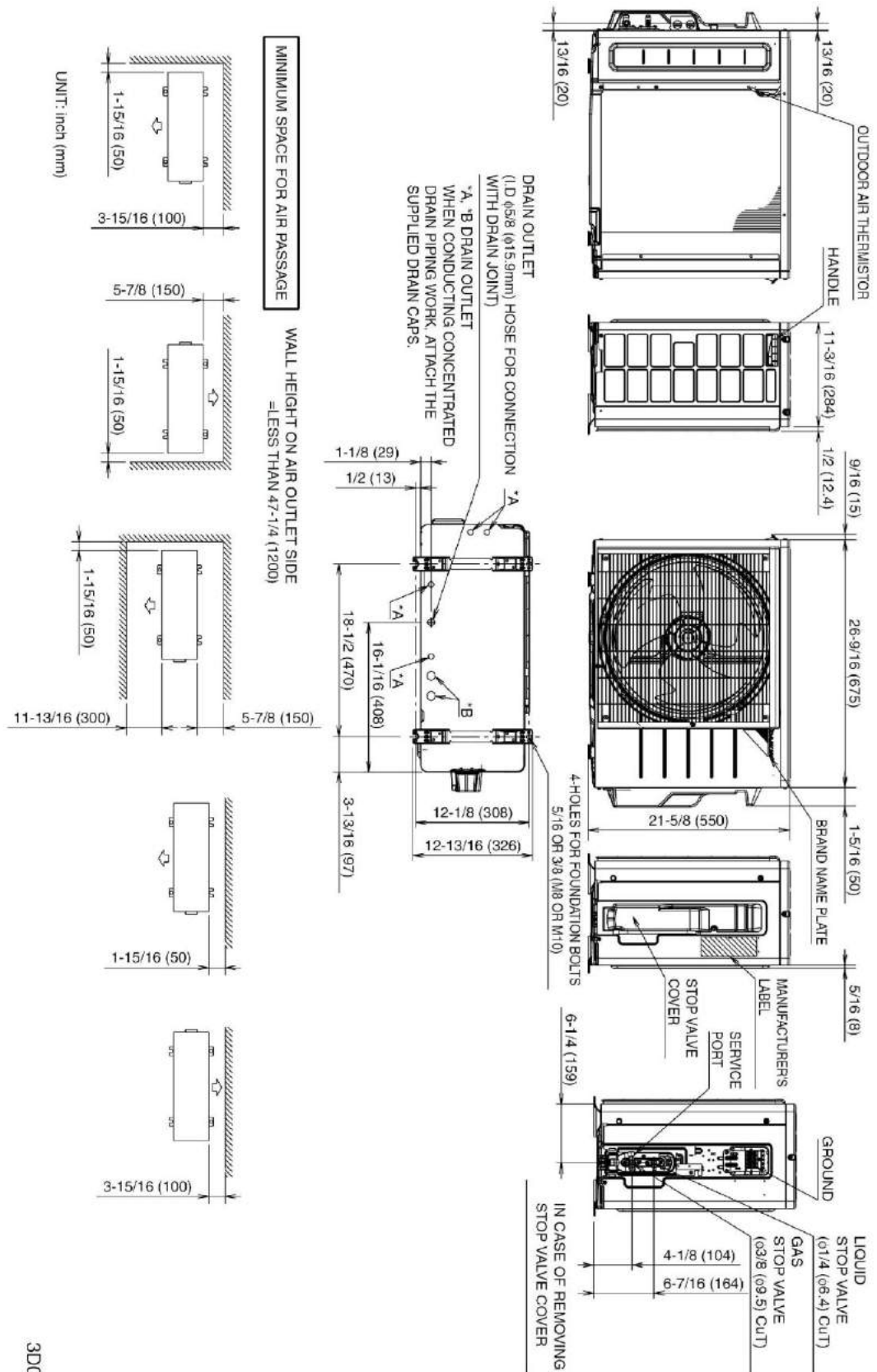
# FVXS09NVJU Dimensional Data



Daikin North America LLC 5151 San Felipe, Suite 500 Houston, TX 77056

(Daikin's products are subject to continuous improvements. Daikin reserves the right to modify product design, specifications and information in this data sheet without notice and without incurring any obligations)

# RXL09QMVJU Dimensional Data



3D0092206A

Daikin North America LLC 5151 San Felipe, Suite 500 Houston, TX 77056

(Daikin's products are subject to continuous improvements. Daikin reserves the right to modify product design, specifications and information in this data sheet without notice and without incurring any obligations)



## Indoor Unit

Included	Part Number	Description
	BRP072A43	Wireless Interface Adapter (S21 Adapter Included)
	BRC944B2-A08	Wired Remote Controller kit (Adaptor Required)
	BRCW901A08	Wired Remote Controller Cable – 25ft (Included in above kit)
	BRCW901A03	Wired Remote Controller Cable – 10ft
	KAF968B42	Titanium apatite photocatalytic air-purifying filter WITH frame
	DACA-CP1-1	Inline Condensate Pump (Fits inside all Daikin wall & floor mount units)
	DACA-CP4-1	External Condensate Pump
	DRP928BB2S	Interface Adaptor for DIII-NET

## Outdoor Unit

Included	Part Number	Description
	DACA-WB-1	Powder-Coated Wall-Mounted Bracket
	KPW937F4	Air direction adjustment grille (09 & 12)
	KEH067A41E	Daikin BMS Drain Pan Heater Small (09 & 12)
	KKG067A41	Back protection wire net (09 & 12)
	KPS067A41	Snow hood (intake side plate) (09 & 12)
	KPS067A42	Snow hood (intake rear plate) (09 & 12)
	KPS067A44	Snow hood (outlet) (09 & 12)
	KKP937A4	Drain Plug for OD Unit

Job Name:	
Tag#	



## Submittal Data Sheet

## FVXS12NVJU / RXL12QMVJU9

### 1-Ton Floor Mounted Heat Pump System



Complete warranty details available from your local dealer or at [www.daikincomfort.com](http://www.daikincomfort.com). To receive the 12-Year Parts Limited Warranty, online registration must be completed within 60 days of installation. Online registration is not required in California or Quebec. *If product is installed in a commercial application, limited warranty period is 5 years.*

### Indoor Specifications

	Cooling		Heating	
	H	M	H	M
	Airflow Rate (cfm)	300	237	332
	L	SL	L	SL
	173	159	184	166
Sound (dBA) H / M / L / SL	39 / 33 / 27 / 24		39 / 33 / 27 / 24	
Dimensions (H x W x D) (in)	23-5/8 x 27-9/16 x 8-1/4			
Weight (Lbs)	31			

### Outdoor Specifications

Compressor	Hermetically Sealed Swing Type			
Refrigerant	R-410A			
Factory Charge (Lbs)	2.09			
Refrigerant Oil	PVE (FVC50K)			
Airflow Rate (cfm)	Cooling		Heating	
	H	1,144	H	1,006
	SL	865	SL	777
Sound Pressure Level (dBA)	50			
Dimensions (H x W x D) (in)	21-5/8 x 26-9/16 x 11-13/16			
Weight (Lbs)	70			

### Efficiency

Cooling		Heating	
SEER	20.0	HSPF	11.4
EER	12.0	COP	4.00

### Performance

Cooling (Btu/hr)	
Rated (Min/Max)	10,200 (4,400 / 12,300)
Sensible @ AHRI	7,830
Moisture Removal gal/h	.45
Standard Operating Range	50°F – 115°F
Extended Operating Range*	-4°F – 115°F

Rated Cooling Conditions: Indoor: 80°F DB/67°F WB  
Outdoor: 95°F DB/75°F WB

\*With field settings and wind baffle

Heating (Btu/hr)	
1: @ 47° Rated (Min/Max)	13,000 (4,400 / 17,100)
2: @ 17° Rated	8,300
3: @ 5° Max: Capacity / COP	13,000 / 2.18
Operating Range	-13°F – 65°F

1: Rated Heating Conditions: Indoor: 70°F DB/60°F WB  
Outdoor: 47°F DB/43°F WB

2: Rated Heating Conditions: Indoor: 70°F DB/60°F WB  
Outdoor: 17°F DB/15°F WB

3: Heating Conditions; Compressor Operating at Max Frequency  
Indoor: 70°F DB/60°F WB  
Outdoor: 5°F DB/5°F WB

### Electrical

	208/60/1	230/60/1
System MCA	13.0	13.0
System MFA	15	15
Compressor RLA	12.0	12.0
Outdoor fan motor FLA	.17	.17
Outdoor fan motor W	20	20
Indoor fan motor FLA	.22	.22
Indoor fan motor W	13	13

MFA: Max. fuse amps MCA: Min. circuit amps (A) FLA: Full load amps (A)  
RLA: Rated load amps (A) W: Fan motor rated output (W)

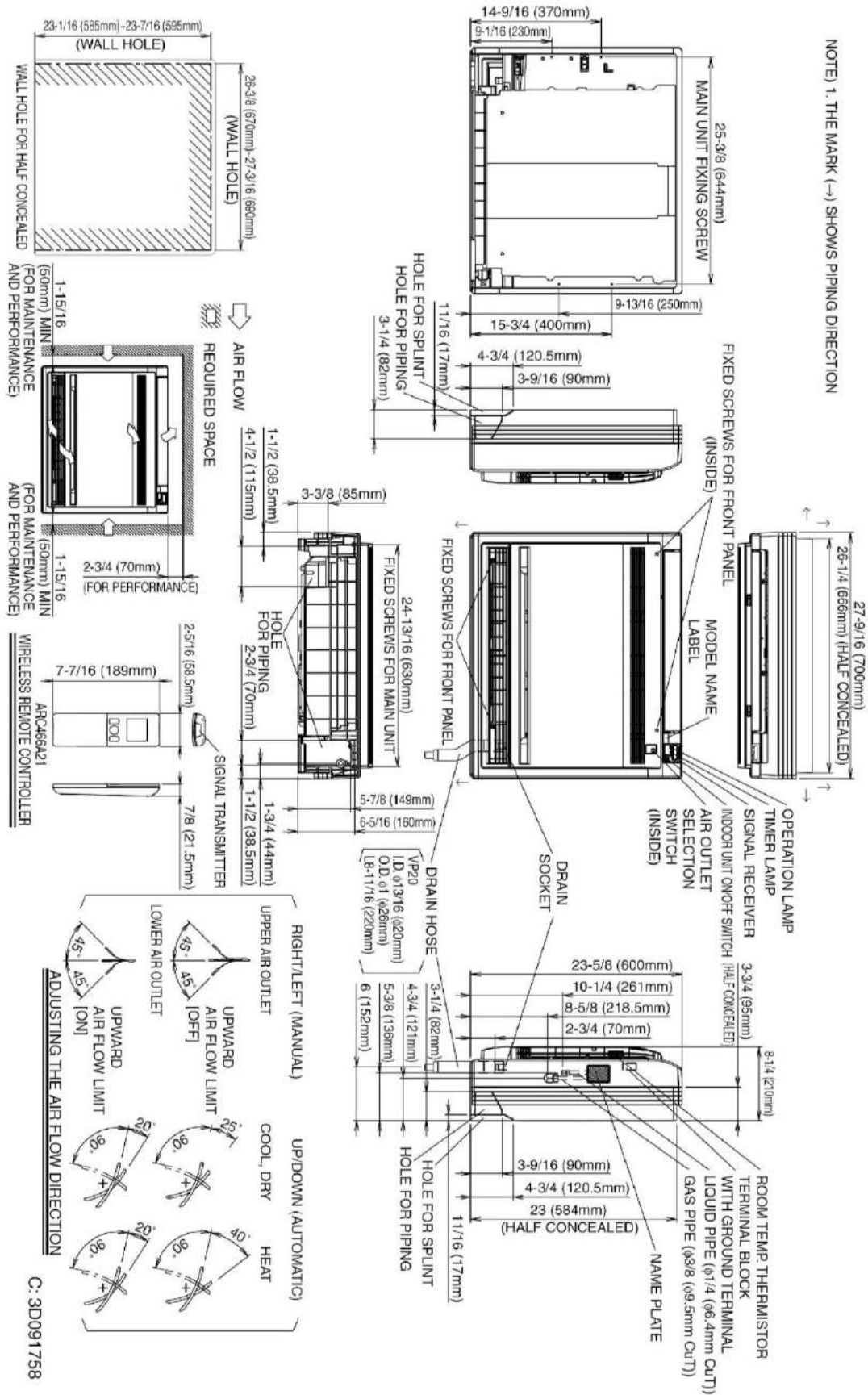
### Piping

Liquid (in)	1/4
Gas (in)	3/8
Drain (in)	13/16
Max. Interunit Piping Length (ft)	65.625
Max. Interunit Height Difference (ft)	49.25
Chargeless (ft)	32.8
Additional Charge of Refrigerant (oz/ft)	.21

Daikin North America LLC 5151 San Felipe, Suite 500 Houston, TX 77056

(Daikin's products are subject to continuous improvements. Daikin reserves the right to modify product design, specifications and information in this data sheet without notice and without incurring any obligations)

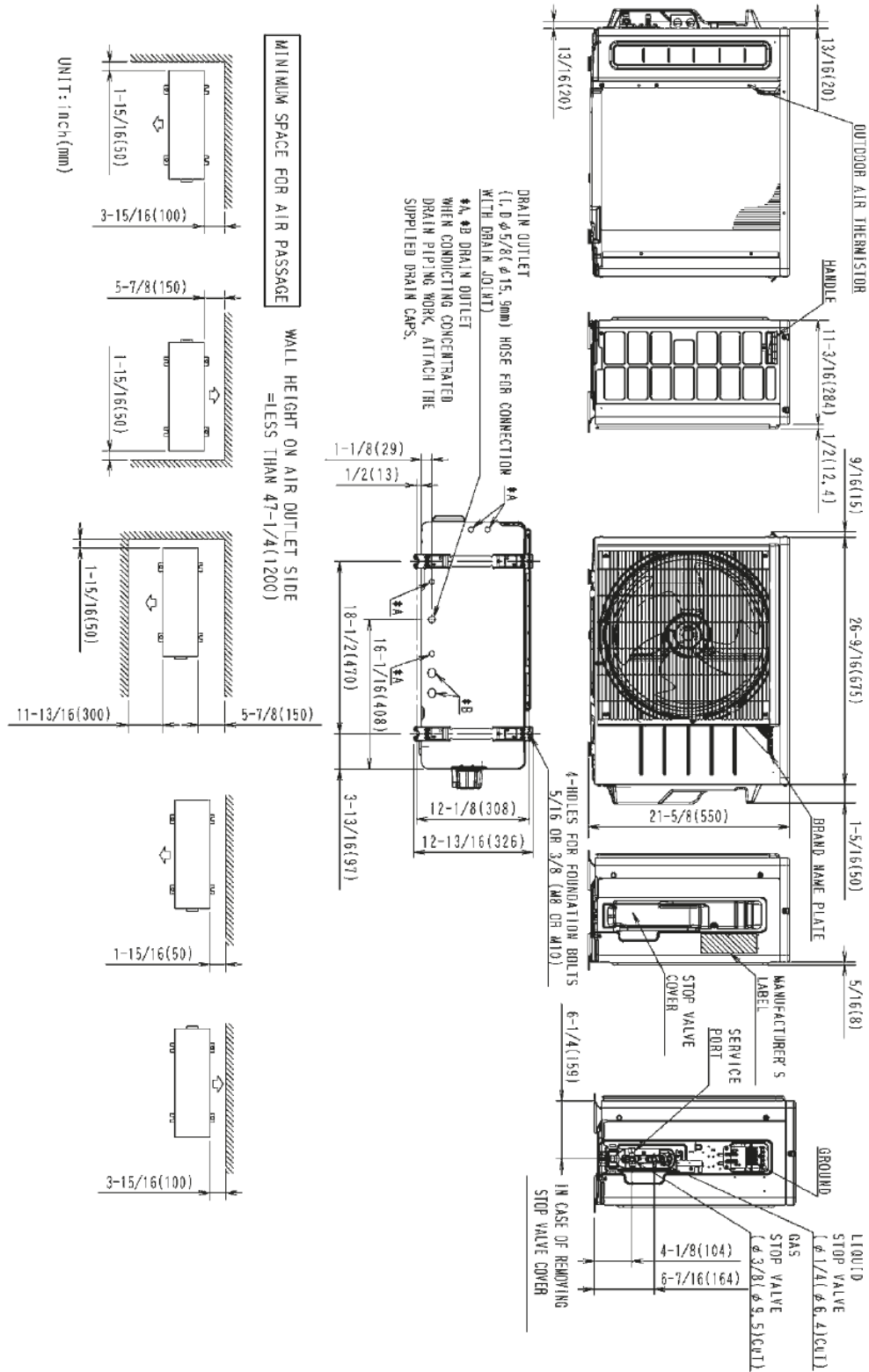
# FVXS12NVJU Dimensional Data



Daikin North America LLC 5151 San Felipe, Suite 500 Houston, TX 77056

(Daikin's products are subject to continuous improvements. Daikin reserves the right to modify product design, specifications and information in this data sheet without notice and without incurring any obligations)

# RXL12QMVJU9 Dimensional Data



3D092206E

Daikin North America LLC 5151 San Felipe, Suite 500 Houston, TX 77056

(Daikin's products are subject to continuous improvements. Daikin reserves the right to modify product design, specifications and information in this data sheet without notice and without incurring any obligations)

Submittal Revision Date: November 2019



## Indoor Unit

Included	Part Number	Description
	BRP072A43	Wireless Interface Adapter (S21 Adapter Included)
	BRC944B2-A08	Wired Remote Controller kit (Adaptor Required)
	BRCW901A08	Wired Remote Controller Cable – 25ft (Included in above kit)
	BRCW901A03	Wired Remote Controller Cable – 10ft
	KAF968B42	Titanium apatite photocatalytic air-purifying filter WITH frame
	DACA-CP1-1	Inline Condensate Pump (Fits inside all Daikin wall & floor mount units)
	DACA-CP4-1	External Condensate Pump
	KRP928BB2S	Interface Adaptor for DIII-NET

## Outdoor Unit

Included	Part Number	Description
	DACA-WB-1	Powder-Coated Wall-Mounted Bracket
	KPW937F4	Air direction adjustment grille (09 & 12)
	KEH067A41E	Daikin BMS Drain Pan Heater Small (09 & 12)
	KKG067A41	Back protection wire net (09 & 12)
	KPS067A41	Snow hood (intake side plate) (09 & 12)
	KPS067A42	Snow hood (intake rear plate) (09 & 12)
	KPS067A44	Snow hood (outlet) (09 & 12)
	KKP937A4	Drain Plug for OD Unit



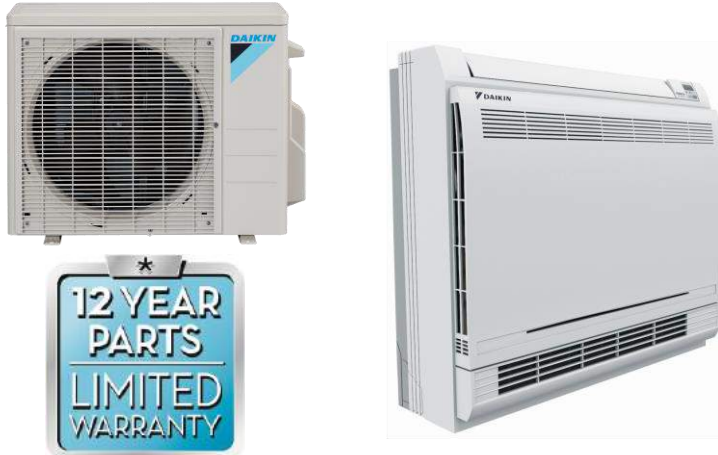
Job Name:	
Tag#	



## Submittal Data Sheet

## FVXS15NVJU / RXL15QMVJUA

### 1.25-Ton Floor Mounted Heat Pump System



Complete warranty details available from your local dealer or at [www.daikincomfort.com](http://www.daikincomfort.com). To receive the 12-Year Parts Limited Warranty, online registration must be completed within 60 days of installation. Online registration is not required in California or Quebec. *If product is installed in a commercial application, limited warranty period is 5 years.*

### Indoor Specifications

Airflow Rate (cfm)	Cooling		Heating	
	H	M	H	M
	L	SL	L	SL
	378	325	417	357
	275	233	300	251
Sound (dBA) H / M / L / SL	44 / 40 / 36 / 32		45 / 40 / 36 / 32	
Dimensions (H x W x D) (in)	23-5/8 x 27-9/16 x 8-1/4			
Weight (Lbs)	31			

### Outdoor Specifications

Compressor	Hermetically Sealed Swing Type			
Refrigerant	R-410A			
Factory Charge (Lbs)	3.20			
Refrigerant Oil	PVE (FVC50K)			
Airflow Rate (cfm)	Cooling		Heating	
	H	M	H	M
	L	SL	L	SL
	2,045	1,762	2,045	1,586
Sound Pressure Level (dBA)	50 / 55			
Dimensions (H x W x D) (in)	28-15/16 x 34-1/4 x 12-5/8			
Weight (Lbs)	108			

### Efficiency

Cooling		Heating	
SEER	20.0	HSPF	11.3
EER	12.5	COP	3.76

### Performance

Cooling (Btu/hr)	
Rated (Min/Max)	15,000 (5,800 / 17,100)
Sensible @ AHRI	10,650
Moisture Removal gal/h	.63
Standard Operating Range	50°F – 115°F
Extended Operating Range*	-4°F – 115°F

Rated Cooling Conditions: Indoor: 80°F DB/67°F WB  
Outdoor: 95°F DB/75°F WB

\*With field settings and wind baffle

Heating (Btu/hr)	
1: @ 47° Rated (Min/Max)	18,000 (5,800 / 24,000)
2: @ 17° Rated	11,500
3: @ 5° Max: Capacity / COP	18,000 / 2.4
Operating Range	-13°F – 60°F

1: Rated Heating Conditions: Indoor: 70°F DB/60°F WB  
Outdoor: 47°F DB/43°F WB  
2: Rated Heating Conditions: Indoor: 70°F DB/60°F WB  
Outdoor: 17°F DB/15°F WB  
3: Heating Conditions; Compressor : Indoor: 70°F DB/60°F WB  
Operating at Max Frequency: Outdoor: 5°F DB/5°F WB

### Electrical

	208/60/1	230/60/1
System MCA	13.0	13.0
System MFA	15	15
Compressor RLA	11.8	11.8
Outdoor fan motor FLA	.47	.47
Outdoor fan motor W	71	71
Indoor fan motor FLA	.29	.29
Indoor fan motor W	23	23

MFA: Max. fuse amps MCA: Min. circuit amps (A) FLA: Full load amps (A)  
RLA: Rated load amps (A) W: Fan motor rated output (W)

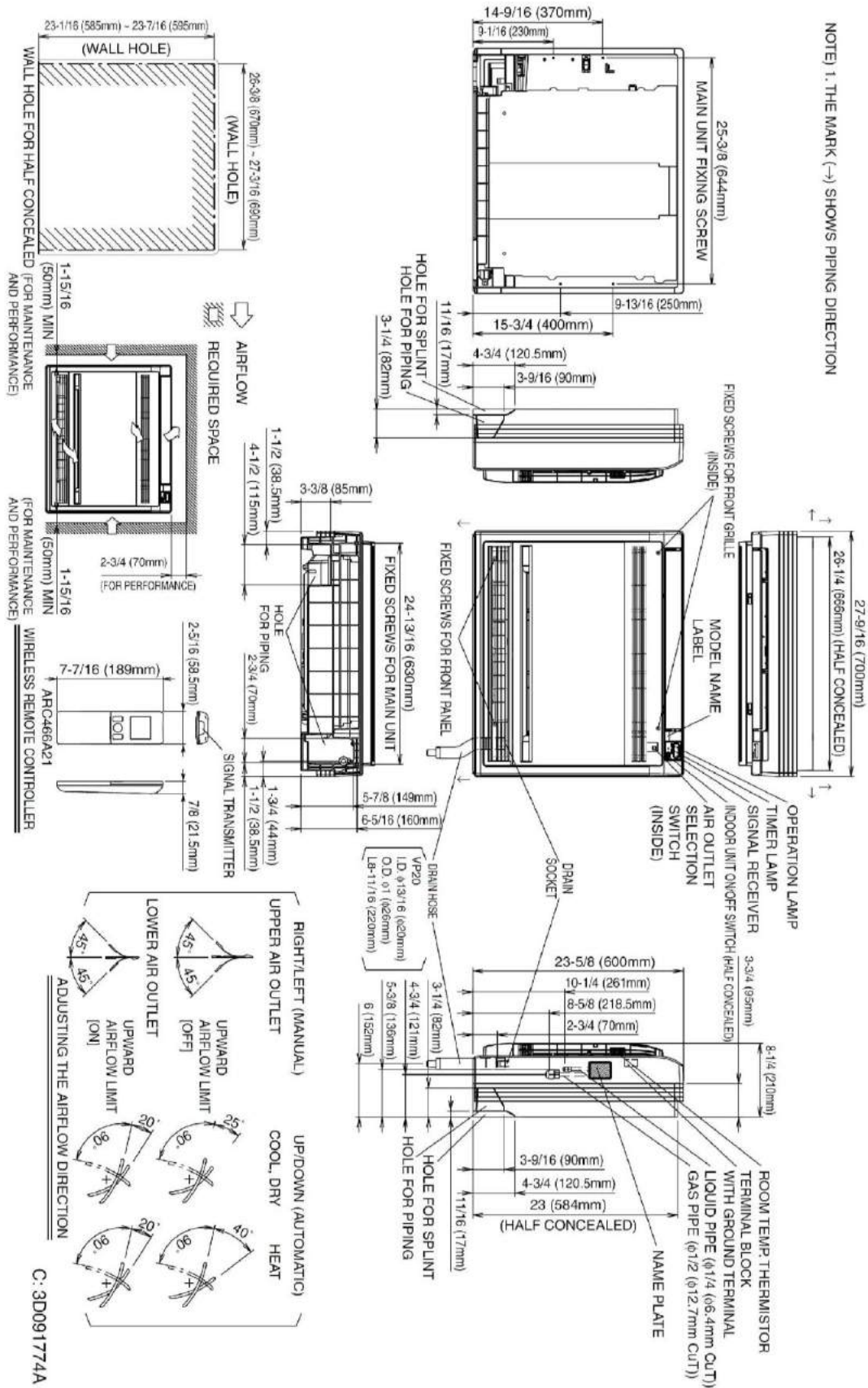
### Piping

Liquid (in)	1/4
Gas (in)	1/2
Drain (in)	13/16
Max. Interunit Piping Length (ft)	98.4
Max. Interunit Height Difference (ft)	65.625
Chargeless (ft)	32.8
Additional Charge of Refrigerant (oz/ft)	.21

Daikin North America LLC 5151 San Felipe, Suite 500 Houston, TX 77056

(Daikin's products are subject to continuous improvements. Daikin reserves the right to modify product design, specifications and information in this data sheet without notice and without incurring any obligations)

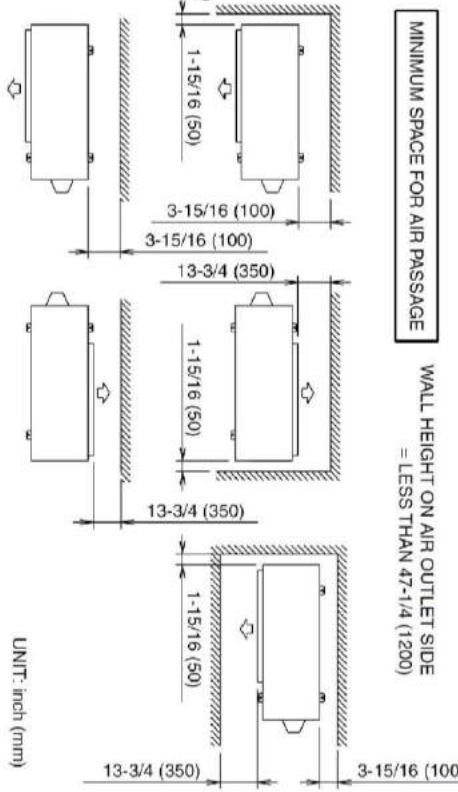
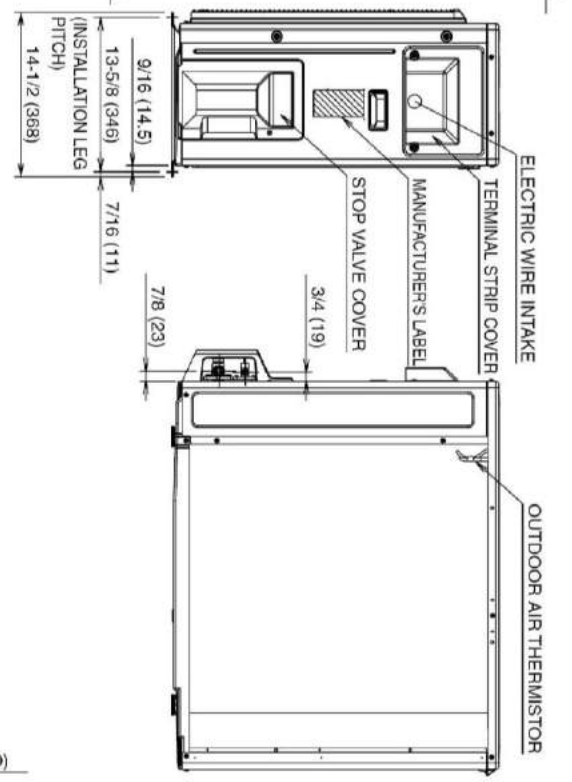
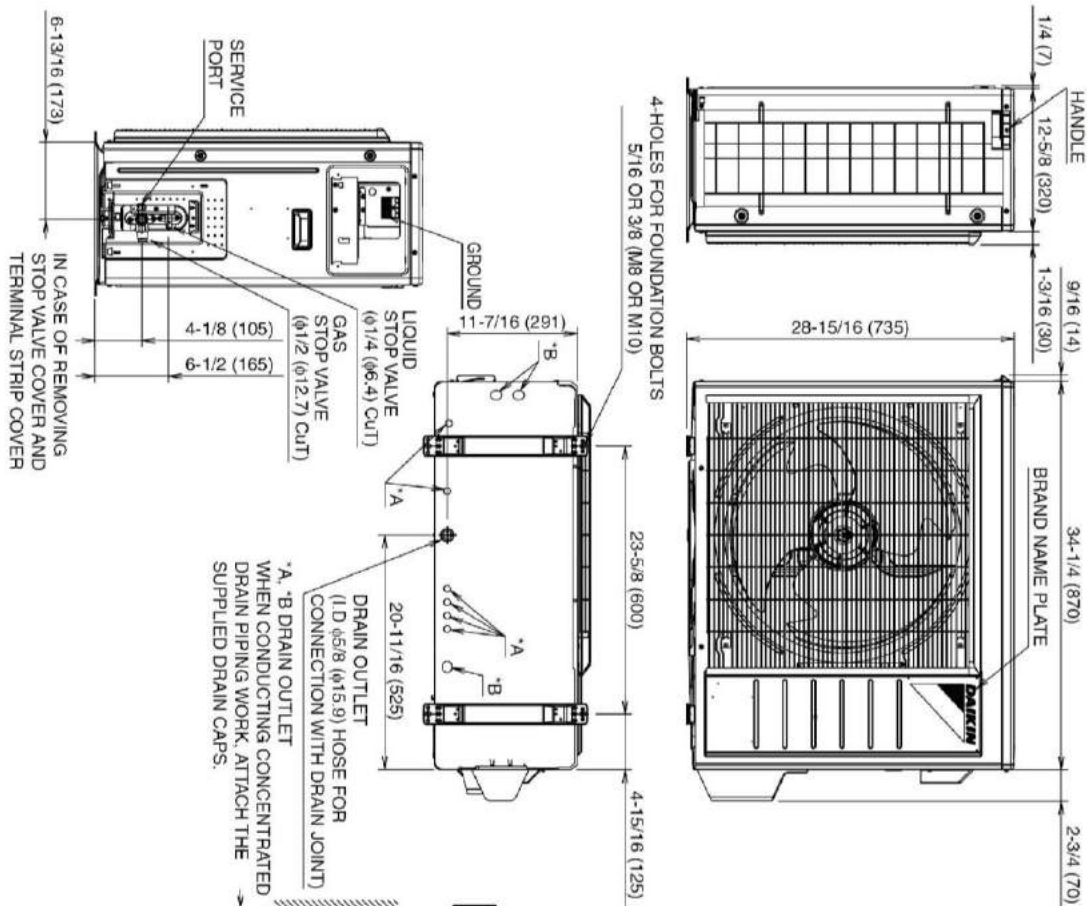
# FVXS15NVJU Dimensional Data



Daikin North America LLC 5151 San Felipe, Suite 500 Houston, TX 77056

(Daikin's products are subject to continuous improvements. Daikin reserves the right to modify product design, specifications and information in this data sheet without notice and without incurring any obligations)

# RXL15QMVJUA Dimensional Data



Daikin North America LLC 5151 San Felipe, Suite 500 Houston, TX 77056

(Daikin's products are subject to continuous improvements. Daikin reserves the right to modify product design, specifications and information in this data sheet without notice and without incurring any obligations)



## Indoor Unit

Included	Part Number	Description
	BRP072A43	Wireless Interface Adapter (S21 Adapter Included)
	BRC944B2-A08	Wired Remote Controller kit (Adaptor Required)
	BRCW901A08	Wired Remote Controller Cable – 25ft (Included in above kit)
	BRCW901A03	Wired Remote Controller Cable – 10ft
	KAF968B42	Titanium apatite photocatalytic air-purifying filter WITH frame
	DACA-CP1-1	Inline Condensate Pump (Fits inside all Daikin wall & floor mount units)
	DACA-CP4-1	External Condensate Pump
	KRP928BB2S	Interface Adaptor for DIII-NET

## Outdoor Unit

Included	Part Number	Description
	DACA-WB-1	Powder-Coated Wall-Mounted Bracket
	KPW063B4	Air direction adjustment grille (15)
	KEH063A4E	Daikin BML Drain Pan Heater Large (15)
	KKG063A42	Back protection wire net (15)
	KPS063A41	Snow hood (intake side plate) (15)
	KPS063A44	Snow hood (intake rear plate) (15)
	KPS063A47	Snow hood (outlet) (15)
	KKP937A4	Drain Plug for OD Unit