



Customer:  
Customer Sample ID:  
Laboratory Number:



# Cannabinoid Profile

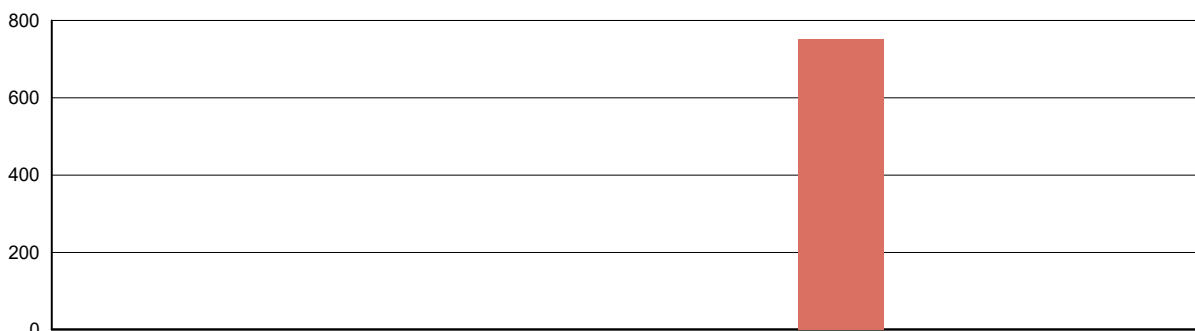
Extraction Technician: DF  
Analytical Chemist: CB

Extraction Date(s)	Analysis Date(s)
11/24/2020	11/24/2020

Cannabinoids (HPLC)	Results		
	LOD (mg/g)	%	mg/g
Cannabidivarin (CBDV)	<0.80		
Cannabidiolic Acid (CBD-A)	<0.80		
Cannabigerolic Acid (CBG-A)	<0.80		
Cannabigerol (CBG)	<0.80		
Cannabidiol (CBD)	<0.80		
Tetrahydrocannabivarin (THCV)	<0.80		
Cannabinol (CBN)	<0.80		
delta 9-Tetrahydrocannabinol (THC)	<0.80		
delta 8-Tetrahydrocannabidol		75.15	752
Cannabichromene (CBC)	<0.80		
delta-9-Tetrahydrocannabinolic Acid (THC-A)	<0.80		
Cannabinoids Total		%	mg/g
Max Active THC		0.00	0.00
Max Active CBD		0.00	0.00
T.Active Cannabinoids		0.00	0.00
Total Cannabinoids		75.20	752.00

Following USDA guidelines on uncertainty, Altitude Consulting's uncertainty are calculated for CBDa and CBD at +/- 4%. The uncertainty for THCa and THC are +/- 5%. This implies the range for a 10% value of CBD to be 9.6-10.4%. The uncertainty range for a 0.30% value of THC would be 0.28-0.32%. The measurement uncertainty is calculated using a coverage factor of 2.

## Cannabinoid (mg/g)



<span style="color: blue;">■</span> Cannabichromene (CBC)	<span style="color: orange;">■</span> Cannabidiol (CBD)	<span style="color: green;">■</span> Cannabidiolic Acid (CBD-A)	<span style="color: red;">■</span> Cannabidivarin (CBDV)	<span style="color: purple;">■</span> Cannabigerol (CBG)
<span style="color: yellow;">■</span> Cannabigerolic Acid (CBG-A)	<span style="color: teal;">■</span> Cannabinol (CBN)	<span style="color: brown;">■</span> delta 8-Tetrahydrocannabidol	<span style="color: darkgreen;">■</span> delta 9-Tetrahydrocannabinol (THC)	<span style="color: pink;">■</span> delta-9-Tetrahydrocannabinolic Acid (THC-A)
<span style="color: purple;">■</span> Tetrahydrocannabivarin (THCV)				

Reporting Limits will vary based on sample extraction weight used for the analysis.

Altitude Consulting, LLC utilizes NIST traceable Reference Standards and Certified Reference Material to calibrate analytical instruments along with proven analytical methods. The methods are applied in the most ethical manner following good laboratory practice guidelines. The results of this report are based solely on the sample submitted and cannot be reproduced.



Customer:

Customer Sample ID:

Laboratory Number:



## Residual Solvents Profile

Extraction Technician: DF

Analytical Chemist: CB

Extraction Date(s)	Analysis Date(s)
11/24/2020	11/24/2020

Residual Solvents	Results	Calibration Range
	ug/g	
Propane	<98.6	100 - 2000
Isobutane	<98.6	100 - 2000
Methanol	<98.6	100 - 2000
Butane	<98.6	100 - 2000
Isopropanol	<98.6	100 - 2000
Ethanol	<98.6	100 - 2000
2-Methyl Butane	<98.6	100 - 2000
Acetonitrile	<98.6	100 - 2000
Acetone	<98.6	100 - 2000
n-Pentane	<98.6	100 - 2000
n-Hexane	<49.3	50 - 2000
Tetrahydrofuran	<98.6	100 - 2000
Benzene	<0.986	1.0 - 50
n-Heptane	<98.6	100 - 2000
Toluene	<98.6	100 - 2000
Ethylbenzene	<98.6	100 - 2000
m+p Xylene	<98.6	100 - 2000
o-Xylene	<98.6	100 - 2000

Reporting Limits will vary based on sample extraction weight used for the analysis.

Altitude Consulting, LLC utilizes NIST traceable Reference Standards and Certified Reference Material to calibrate analytical instruments along with proven analytical methods. The methods are applied in the most ethical manner following good laboratory practice guidelines. The results of this report are based solely on the sample submitted and cannot be reproduced.

Customer:  
Customer Sample ID:  
Laboratory Number:



# Cannabinoid Profile

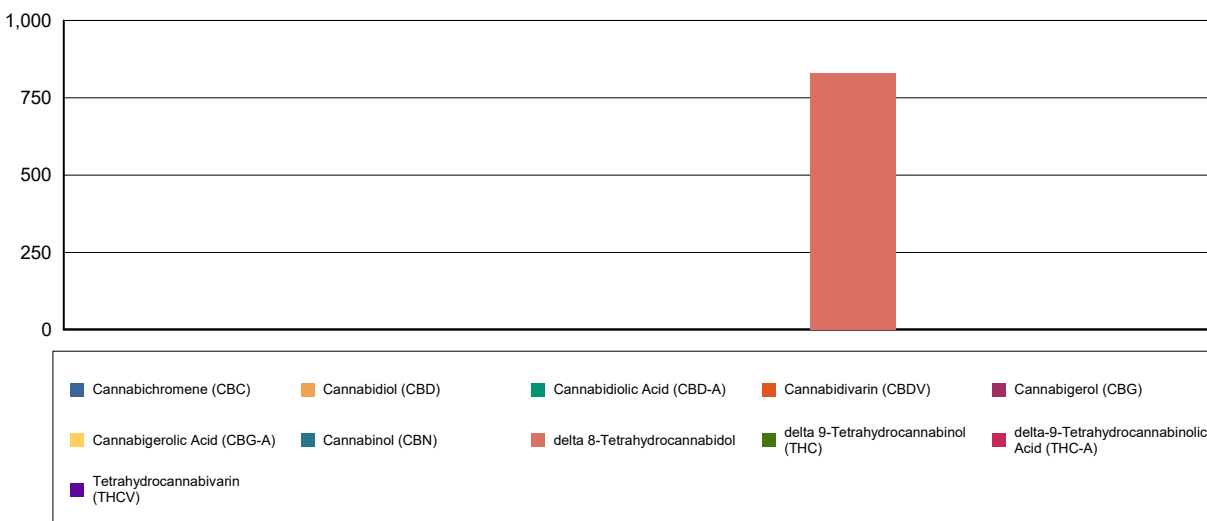
Extraction Technician: DF  
Analytical Chemist: CB

Extraction Date(s)	Analysis Date(s)
11/24/2020	11/24/2020

Cannabinoids (HPLC)	Results		
	LOD (mg/g)	%	mg/g
Cannabidivarin (CBDV)	<0.70		
Cannabidiolic Acid (CBD-A)	<0.70		
Cannabigerolic Acid (CBG-A)	<0.70		
Cannabigerol (CBG)	<0.70		
Cannabidiol (CBD)	<0.70		
Tetrahydrocannabivarin (THCV)	<0.70		
Cannabinol (CBN)	<0.70		
delta 9-Tetrahydrocannabinol (THC)	<0.70		
delta 8-Tetrahydrocannabidol		82.92	829
Cannabichromene (CBC)	<0.70		
delta-9-Tetrahydrocannabinolic Acid (THC-A)	<0.70		
<b>Cannabinoids Total</b>		<b>%</b>	<b>mg/g</b>
Max Active THC		0.00	0.00
Max Active CBD		0.00	0.00
T.Active Cannabinoids		0.00	0.00
Total Cannabinoids		82.90	829.00

Following USDA guidelines on uncertainty, Altitude Consulting's uncertainty are calculated for CBDa and CBD at +/- 4%. The uncertainty for THCa and THC are +/- 5%. This implies the range for a 10% value of CBD to be 9.6-10.4%. The uncertainty range for a 0.30% value of THC would be 0.28-0.32%. The measurement uncertainty is calculated using a coverage factor of 2.

## Cannabinoid (mg/g)



Reporting Limits will vary based on sample extraction weight used for the analysis.

Altitude Consulting, LLC utilizes NIST traceable Reference Standards and Certified Reference Material to calibrate analytical instruments along with proven analytical methods. The methods are applied in the most ethical manner following good laboratory practice guidelines. The results of this report are based solely on the sample submitted and cannot be reproduced.



Customer:  
Customer Sample ID:  
Laboratory Number:



# Cannabinoid Profile

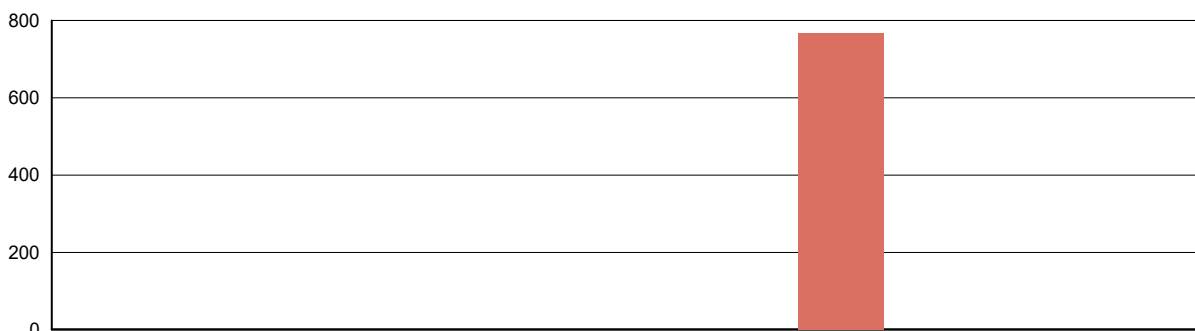
Extraction Technician: DF  
Analytical Chemist: CB

Extraction Date(s)	Analysis Date(s)
11/24/2020	11/24/2020

Cannabinoids (HPLC)		Results	
	LOD (mg/g)	%	mg/g
Cannabidiol (CBD)	<0.70		
Cannabidiolic Acid (CBD-A)	<0.70		
Cannabigerolic Acid (CBG-A)	<0.70		
Cannabigerol (CBG)	<0.70		
Tetrahydrocannabivarin (THCV)	<0.70		
Cannabinol (CBN)	<0.70		
delta 9-Tetrahydrocannabinol (THC)	<0.70		
delta 8-Tetrahydrocannabinol		76.85	769
Cannabichromene (CBC)	<0.70		
delta-9-Tetrahydrocannabinolic Acid (THC-A)	<0.70		
Cannabinoids Total		%	mg/g
Max Active THC		0.00	0.00
Max Active CBD		0.00	0.00
T.Active Cannabinoids		0.00	0.00
Total Cannabinoids		76.90	769.00

Following USDA guidelines on uncertainty, Altitude Consulting's uncertainty are calculated for CBDa and CBD at +/- 4%. The uncertainty for THCa and THC are +/- 5%. This implies the range for a 10% value of CBD to be 9.6-10.4%. The uncertainty range for a 0.30% value of THC would be 0.28-0.32%. The measurement uncertainty is calculated using a coverage factor of 2.

## Cannabinoid (mg/g)



<span style="color: blue;">■</span> Cannabichromene (CBC)	<span style="color: orange;">■</span> Cannabidiol (CBD)	<span style="color: green;">■</span> Cannabidiolic Acid (CBD-A)	<span style="color: red;">■</span> Cannabidiol (CBD)	<span style="color: purple;">■</span> Cannabigerol (CBG)
<span style="color: yellow;">■</span> Cannabigerolic Acid (CBG-A)	<span style="color: teal;">■</span> Cannabinol (CBN)	<span style="color: brown;">■</span> delta 8-Tetrahydrocannabinol	<span style="color: darkgreen;">■</span> delta 9-Tetrahydrocannabinol (THC)	<span style="color: pink;">■</span> delta-9-Tetrahydrocannabinolic Acid (THC-A)
<span style="color: purple;">■</span> Tetrahydrocannabivarin (THCV)				

Reporting Limits will vary based on sample extraction weight used for the analysis.

Altitude Consulting, LLC utilizes NIST traceable Reference Standards and Certified Reference Material to calibrate analytical instruments along with proven analytical methods. The methods are applied in the most ethical manner following good laboratory practice guidelines. The results of this report are based solely on the sample submitted and cannot be reproduced.