

barkman™

SPACES



2 Why Barkman



10 Spaces



- 10 Driveways
- 14 Patios
- 20 Paths
- 24 Pool Decks
- 28 Grand Walls & Steps
- 32 Garden Walls
- 36 Landscape Kits
- 40 Small Spaces

42 Pavers



64 Slabs



72 Walls & Steps



91 Finishing Touches



96 Landscape Kits



103 Important Information

105 Basic Paver and Slab Installation

108 Basic Wall Installation

109 Our Locations

Longevity measured not in years, but generations

A Canadian family-owned business for over 75 years.

In 1948, Peter Barkman, alongside his two brothers, established a small hardware store in the community of Steinbach, Manitoba. While initially focused on serving the community through hardware offerings and plumbing and heating services, including poured-in-place concrete septic tanks, the brothers saw an opportunity for innovation. After countless hours of planning and research, in 1952 the brothers introduced a groundbreaking precast concrete septic tank that revolutionized the production and installation process and kickstarted their journey into precast concrete manufacturing.

Recognizing the many benefits of precast concrete, the company swiftly expanded its portfolio to include precast steps and went on to pioneer the introduction of segmental concrete pavers to North America.

The spirit of innovation remains deeply ingrained in our corporate culture, driving us to continually refine our products, processes, and capabilities. Over the span of 75 years, this commitment to innovation has been the cornerstone of our growth as a Canadian family-owned business. This, paired with our goal to serve communities across Western Canada through quality products and exceptional customer service, has propelled us far beyond our modest beginnings to the position we proudly hold today.

As Barkman enters the third generation of family ownership, we are confident that we are exceptionally positioned to uphold our commitment to serving you through innovative concrete solutions.

Alan Barkman and Scott Barkman



Why choose Barkman? Let us show you.

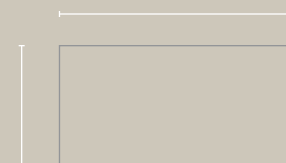
After 75 years, we are more committed than ever to product quality and customer satisfaction.

We use high-quality materials and implement rigorous quality control measures throughout our manufacturing process, aiming to consistently deliver a product of superior quality.

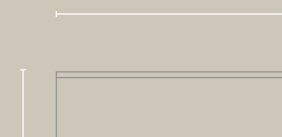


Developed through experience, tested through time

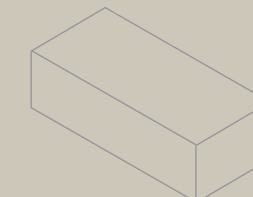
Through use of our in-house laboratory, our research and development team see to it that all our products have been engineered and developed to ensure real-world durability, even in the harshest of climatic conditions. Before they reach your property, our products are subjected to freeze-thaw testing (stress/weather resistant tests) and compression testing among other rigorous trials.



TOP VIEW

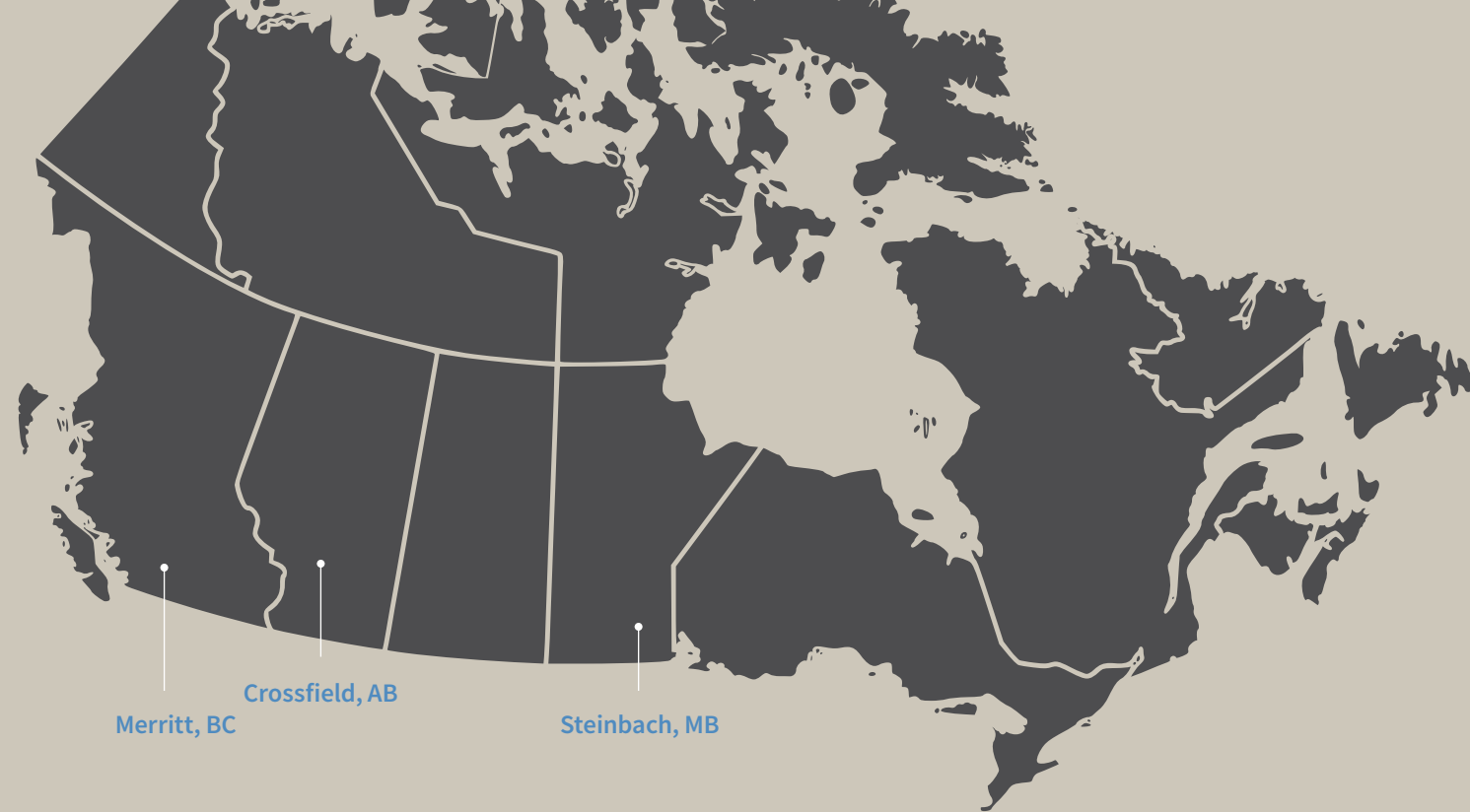


TOP VIEW



ISOMETRIC VIEW





Let our expertise be your peace of mind

Rest easy knowing that your investment is backed by 75+ years of industry-leading experience.

Since 1948, Barkman has been a leader in the design, innovation and manufacturing of precast concrete products. Our state-of-the-art facilities provide a strong foundation, enabling us to strive for industry-leading quality in our product manufacturing. We stake our name on it.



Like our products, our warranty is built to last



It's easy to talk about quality, but backing it up is another matter. Our warranty is as solid as our products, which means you are covered by a transferable lifetime warranty, where we will replace or repair, without charge, any defective product installed and maintained to our guidelines under normal use.

To read more about
our warranty, scan here:



Broadway
100mm Pavers
Quartz



Broadway
100mm Pavers
Charcoal



Broadway
100mm Pavers
Ash



Bold colour options, in service
of bold imaginations

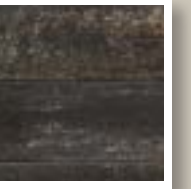


From rich creams and pleasing neutrals to various shades of greys and vibrant hues, Barkman offers a wide selection of colours to suit any outdoor space. Unlocking limitless possibilities, our standard colors are available for special order across multiple product sizes and styles, ensuring your space becomes uniquely exceptional.

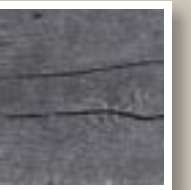
Textures
as nuanced
as your tastes



Bullnose
Pavers

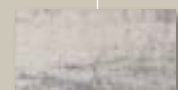


Architextures Walls
Flint



Bridgewood Slabs
Weathered Grey

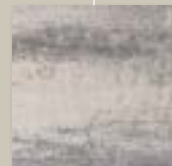
Texture is an integral part of nature, and should be a key consideration in creating your outdoor space. Whether you're looking to create a striking contrast or adopt a more unified approach, our palette of unique textures will ensure a welcome complement to your space.



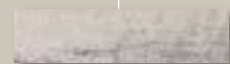
Broadway 100mm
300mm x 150mm
Sterling



Broadway
100mm
600mm x 300mm
Sterling



Broadway 100mm
300mm x 300mm
Sterling



Broadway Planks
400mm x 100mm
Sterling

An array of sizes and shapes, offering infinite design potential

Scale and proportion are critical design principles, and cannot be overlooked when creating an outdoor living space. The possibilities are endless, and our array of sizes and shapes make it possible to create the perfect size relationship to suit your space.



Our stamp of quality meets your personal touch



Barkman fireplaces, pizza oven and fire pits allow you to tailor your outdoor space to suit your exact needs and wants. Our landscape kit offerings provide endless opportunities to make your outdoor space truly feel like home.

Driveways

A big first impression is the only way to roll

Your driveway creates a vital first impression of your home, setting the aesthetic tone for the rest of your property. While exceptional design is critical, our pavers are also engineered to easily withstand the rigours of automotive traffic and Canada's extreme climate fluctuations.



- ◀ Broadway 100mm Pavers (page 56)
- ▲ Navarro Pavers (page 55)
- ▶ Holland Pavers (page 44)



- ◀ Verano Pavers (page 47)
- ▼ Broadway 100mm Pavers (page 56)
- ▶ Roman Pavers (page 45)



Watch your weight:
For driveway applications, be sure to choose a paver that is rated for vehicular use.



Design Tip:
Interlock for stability
An interlocking design can create additional strength to support a visually compelling style.



Patios



- ◀ Roman Pavers (page 45)
- ▼ Broadway 65mm Pavers (page 48)
- ◀◀ Broadway 65mm Pavers (page 48)

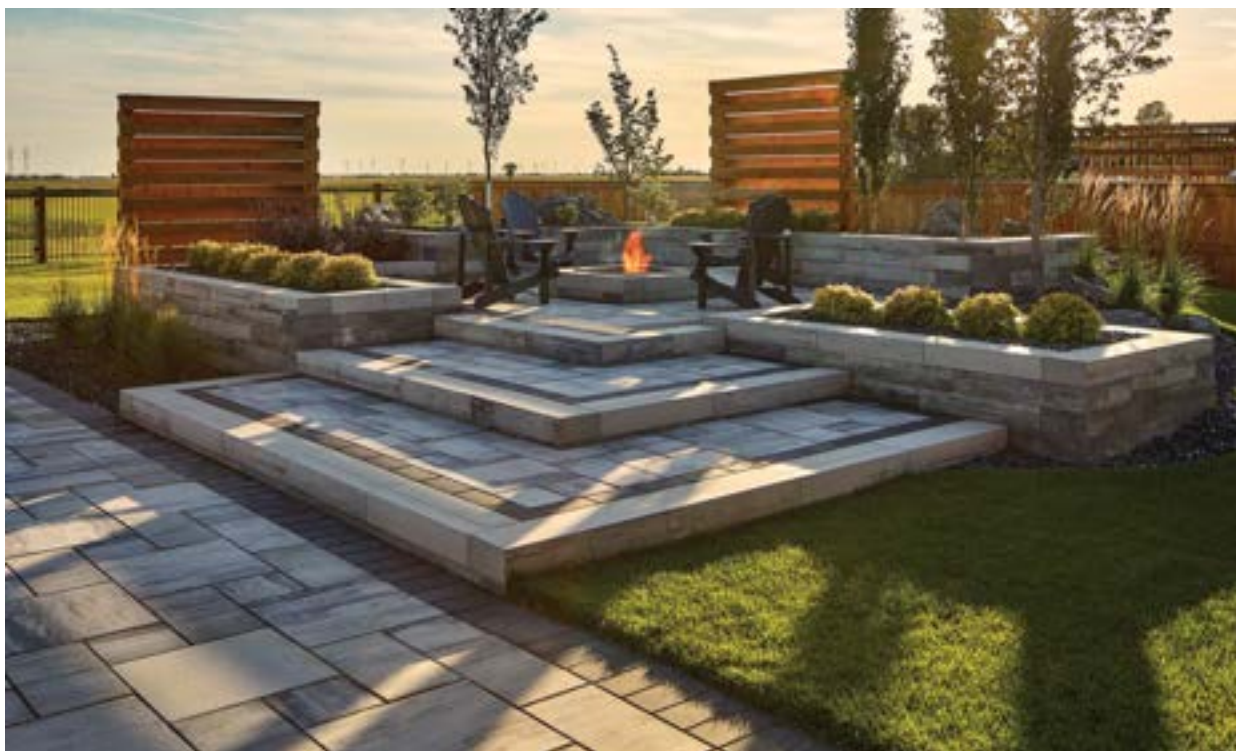


Planning Tip:
Phase it in
Consider planning your space in phases, scaling up as your budget and needs permit.



Take it up a level, at every level

A well-designed patio is a tribute to the joy of outdoor living. Large or small, Barkman Patios can complement any space to create the ultimate entertaining area for family and friends. Our vast selection of pavers and slabs ensures timeless style paired with lasting durability.



- ▲ Flagstone Pavers (page 43)
- ▲ Broadway Planks 100mm Pavers (page 58)
- ♦ Architextures Wall (page 73), Architextures Fire Pit (page 98) and Broadway 65mm Pavers (page 48)
- ▶ Rosetta Grand Flagstone Slabs (page 70), Rosetta Irregular Steps (page 90) and Rosetta Belvedere Fire Pit (page 100)



Planning Tip: Calculate your next move
Visit barkmanconcrete.com/calculator to help plan a materials list for your project.



- ▶ Hexagon 65mm Pavers (page 51) with Cobble Pavers inlay (page 53)
- ▼ Broadway Weathered 100mm Pavers (new) (page 60)
- ▶ Broadway 65mm Pavers (page 48), Keystone Compac III Walls (page 77)



Make a perfect match
When designing your outdoor living space, consider the architectural style of your home to help choose a complementary landscape style.



A winding stone path made of large, flat, light-colored flagstones leads through a lush garden. The path is bordered by dark gravel and green grass. In the background, there are tall birch trees and a large black planter with white and red flowers.

Paths



Start every journey on solid footing

A well-designed path can add comfort and charm to areas that would otherwise be considered utilitarian. Our array of pavers and slabs make for limitless possibilities that will transform how you move throughout your outdoor living space.



- ▶ Broadway Planks 100mm (page 58)
- ◀ Fjord Pavers (page 50)
- ◀◀ Rosetta Dimensional Flagstone Slabs (page 69)



Design Tip: Look in the right direction
Use your pathway as a way to direct sightlines to points of interest throughout your space.



A style to suit your tastes
 From linear to organic, solid to divided, our pavers and slabs offer countless choices for creating the ideal path for your space.



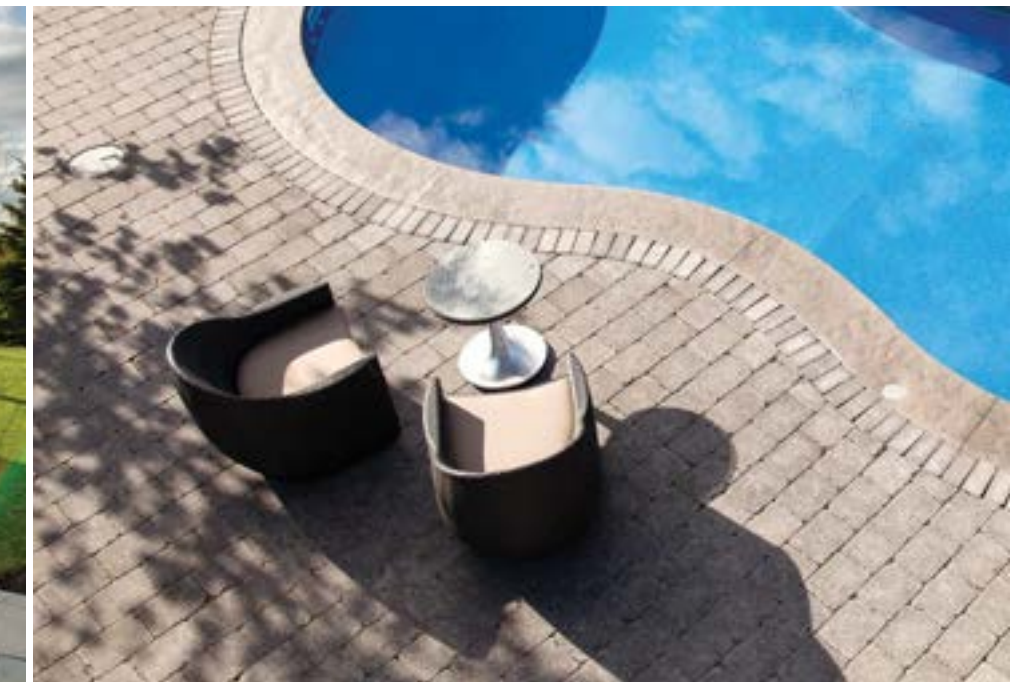
- ▲ Roman Pavers (page 45)
 Bridgewood Slabs
 (page 65)
- ◀ Bridgewood Slabs
 (page 65)
- ▶ Broadway 65mm Pavers
 (page 48), Keystone
 Compac III Walls (page 77)



Pool Decks

Dive in, the options are breathtaking

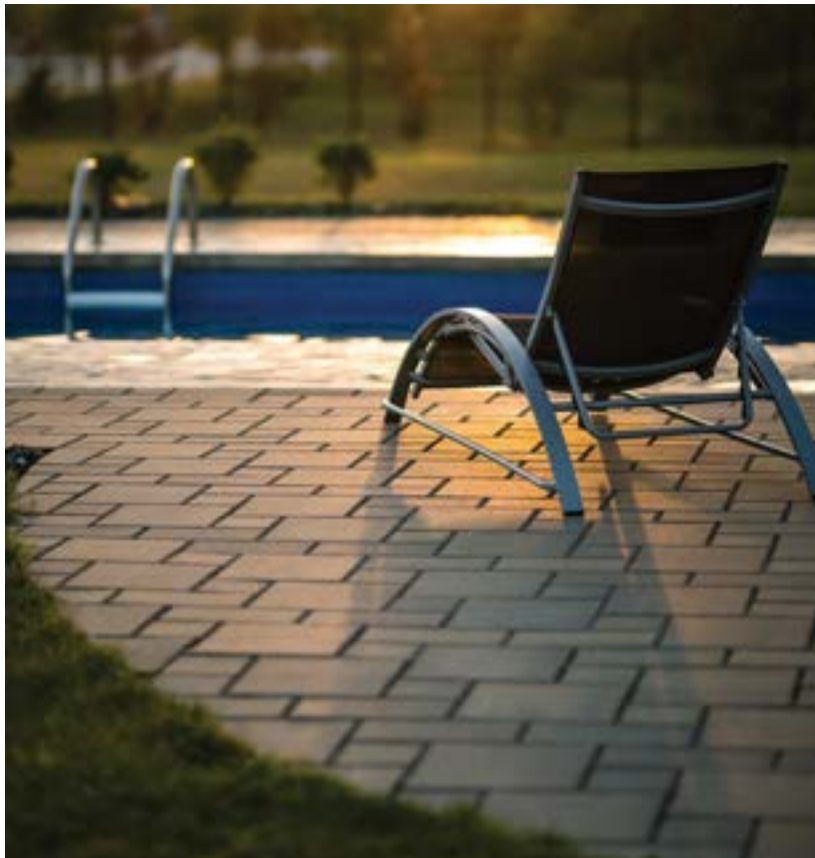
Your investment deserves to look and perform its absolute best. Barkman products serve as the perfect complement to any style of pool with unmatched reliability to ensure you'll make years of lasting memories.



- ▲ Roman Pavers (page 45)
- ♦ Rosetta Dimensional Flagstone Slabs (page 69)
- ◀◀ Fjord Pavers (page 50) and Bullnose Pavers (page 62)



Design Tip:
Keep the focus
Your pool is the focal point of your space. Be sure to plan your layout to accentuate it as the central element.



- ▲ Rosetta Grand Flagstone Slabs (page 70)
- ◆ Verano Pavers (page 47)
- ▶ Rosetta Dimensional Flagstone Slabs (page 69), Rosetta Kodah Wall (page 79), Bridgewood Slabs (page 65)



Live on the edge
Our Bullnose paver is the perfect complement to add functionality and style to your pool deck.



Construction
Tip: Know your limits
Pool decks are inherently complex in their construction. Be sure to consult an expert before starting your project.



Grand Walls & Steps

Make a grand statement, and set it in stone

We offer a wide variety of retaining wall options to suit any design idea for small and large scale projects. The quality and diversity of our wall products allow you to incorporate steps, tiers, and planting beds into your design.



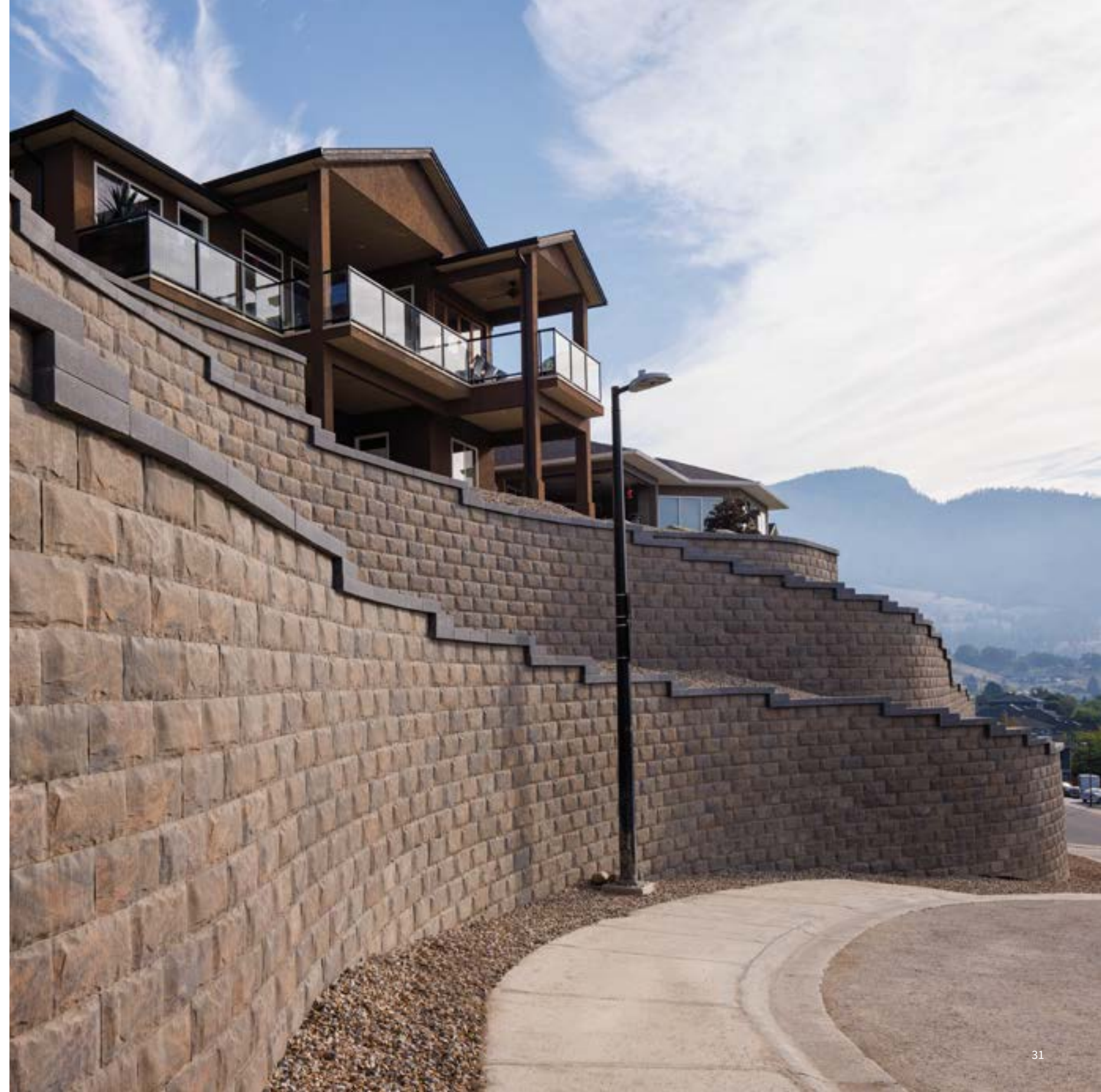
- ▲ Rosetta Outcropping Walls (page 81),
Rosetta Irregular Steps (page 90)
- ◀ Keystone Compac III Walls (page 77)
- ◀◀ Architextures Walls (page 73)



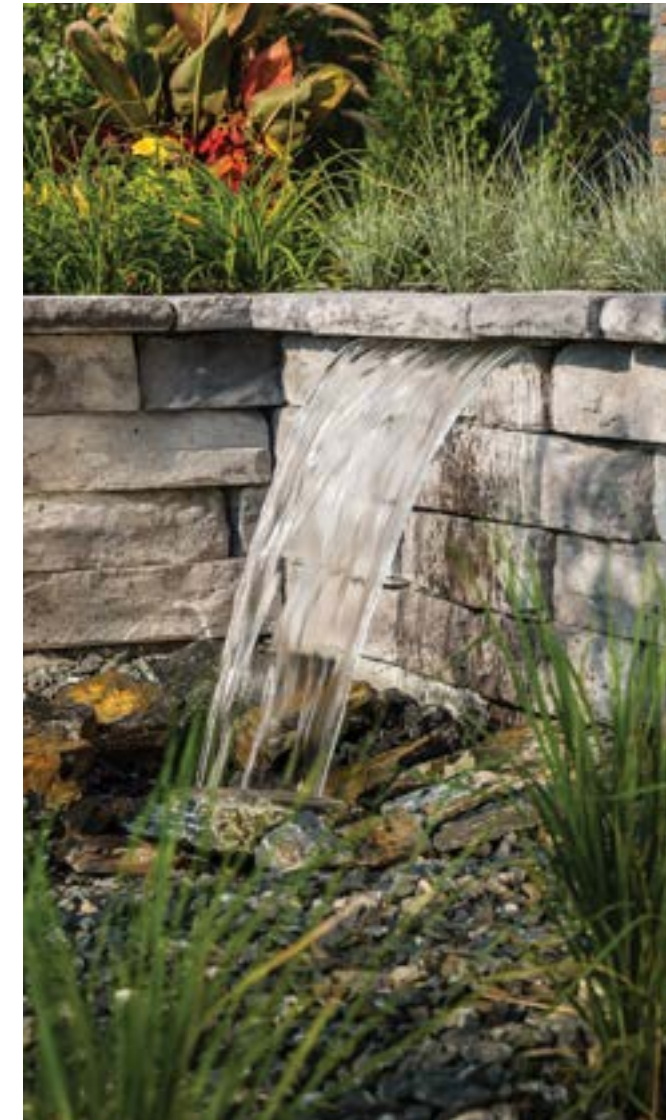
- ◀ Keystone Compac III Walls (page 77)
- ◀◀ Rosetta Kodah Walls (page 79)
- ▼ Architextures Walls (page 73) and Lexington Slabs (page 68)
- ▶ Keystone Compac III Walls (page 77)



Planning Tip:
Scale it to suit
 Scale of wall size should be in relation to the size of your property. It should be a noticeable feature, but not feel overbearing.



Garden Walls



- ◀ Rosetta Kodah Walls (page 79)
- ▼ Architextures Vertex Walls (new) (page 74)
- ◀◀ Architextures Walls (page 73)



Fuse design and nature for a striking impression

Perfect for retaining flower beds or as freestanding accent dividers, these fully customizable garden walls are not only functional, but will also improve your home's curb appeal.



- ▶ Keystone Compac III Walls (page 77)
- ▼ Caliber Stone Walls (new) (page 83) and Navarro Pavers (page 55)
- ▶▶ Keystone Compac III Walls (page 77) and Broadway 65mm Pavers (page 48)



Options, options, options!
The styles, shapes and sizes afforded by our wall products are endless.



Landscape Kits

Designed to minimize complexity and maximize your enjoyment

Fireplaces, Fire Pits & Pizza Oven

Whether you are entertaining friends or enjoying a quiet night for two, time spent around one of our landscape kits is sure to help you unwind. As complete kits, they come with detailed instructions and materials, so you can cozy up and start enjoying long evenings around a warm fire today.



There are two components that make up our Quarry Stone Compact Pizza Oven – the Quarry Stone Compact Pizza Oven Unit (Nonno Peppe) and the Quarry Stone Storage Unit. Each component is sold separately. Nonno Peppe pizza oven design may not be exactly as shown.



- ◀ Quarry Stone Compact Pizza Oven (page 102)
- ▲ Architextures Fire Pit (page 98) and Fjord Pavers (page 50)
- ◀◀ Quarry Stone Fireplace (page 97) and Roman Pavers (page 45)



Planning Tip: Say it with an accent
Install a fireplace or fire pit as an upgrade to accent an existing patio.



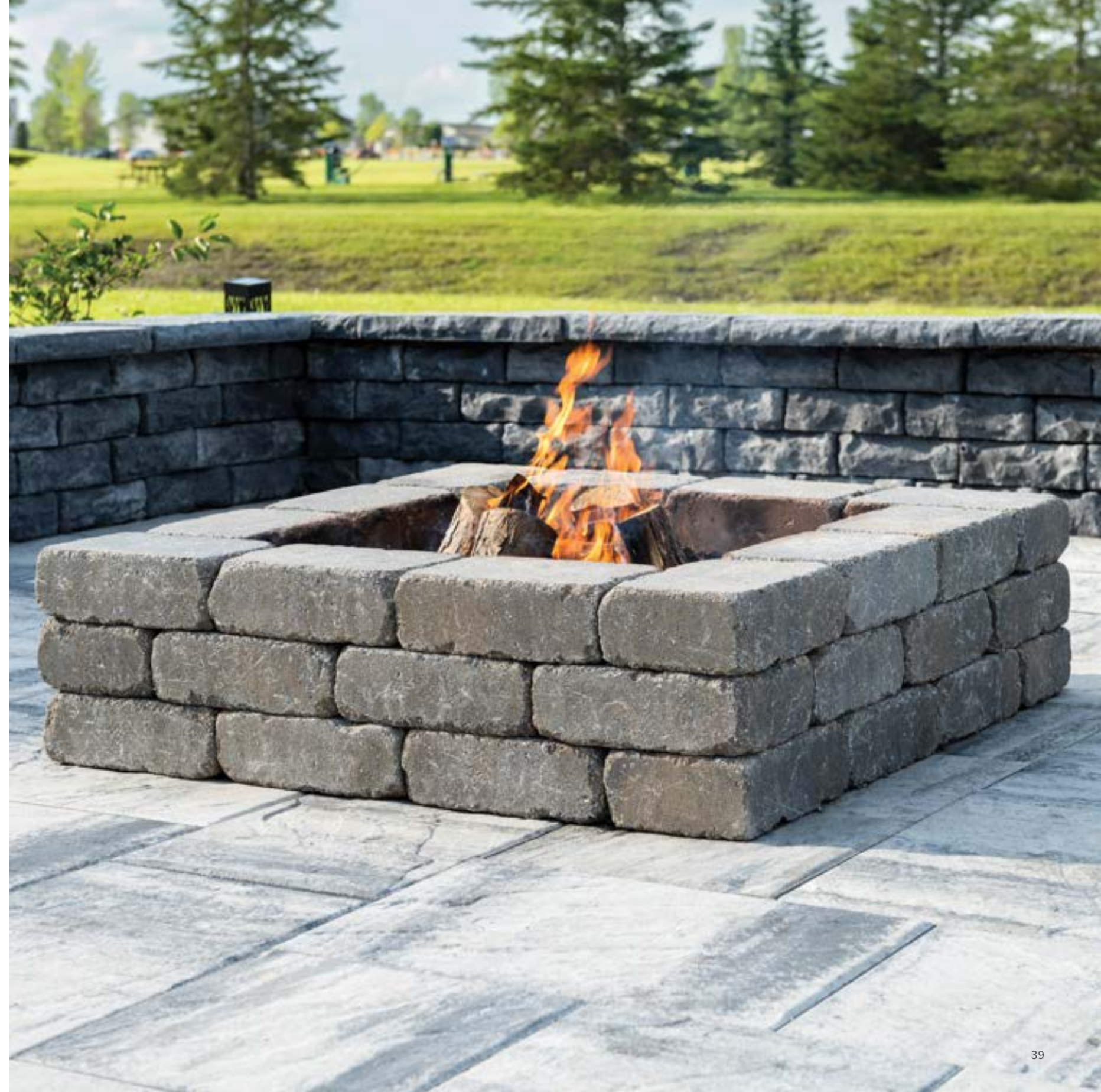
Design Tip:
Big upgrades at a small cost
Fire pits provide a fantastic return on investment, truly transforming your entire space with minimal expense.



Planning Tip: Play it safe.
Never use accelerants like gasoline, garden clippings or garbage as these can quickly cause fires to become unmanageable.



- ▴ Quarry Stone Fireplace with Wood Storages (page 97) and Bridgewood Slabs (page 65)
- ▴ Bridgewood Fire Pit (page 98)
- ▴ Quarry Stone Fire Pit (page 99), Lexington Slabs (page 68) and Rosetta Dimensional Wall with Coping (page 76)





Small Spaces

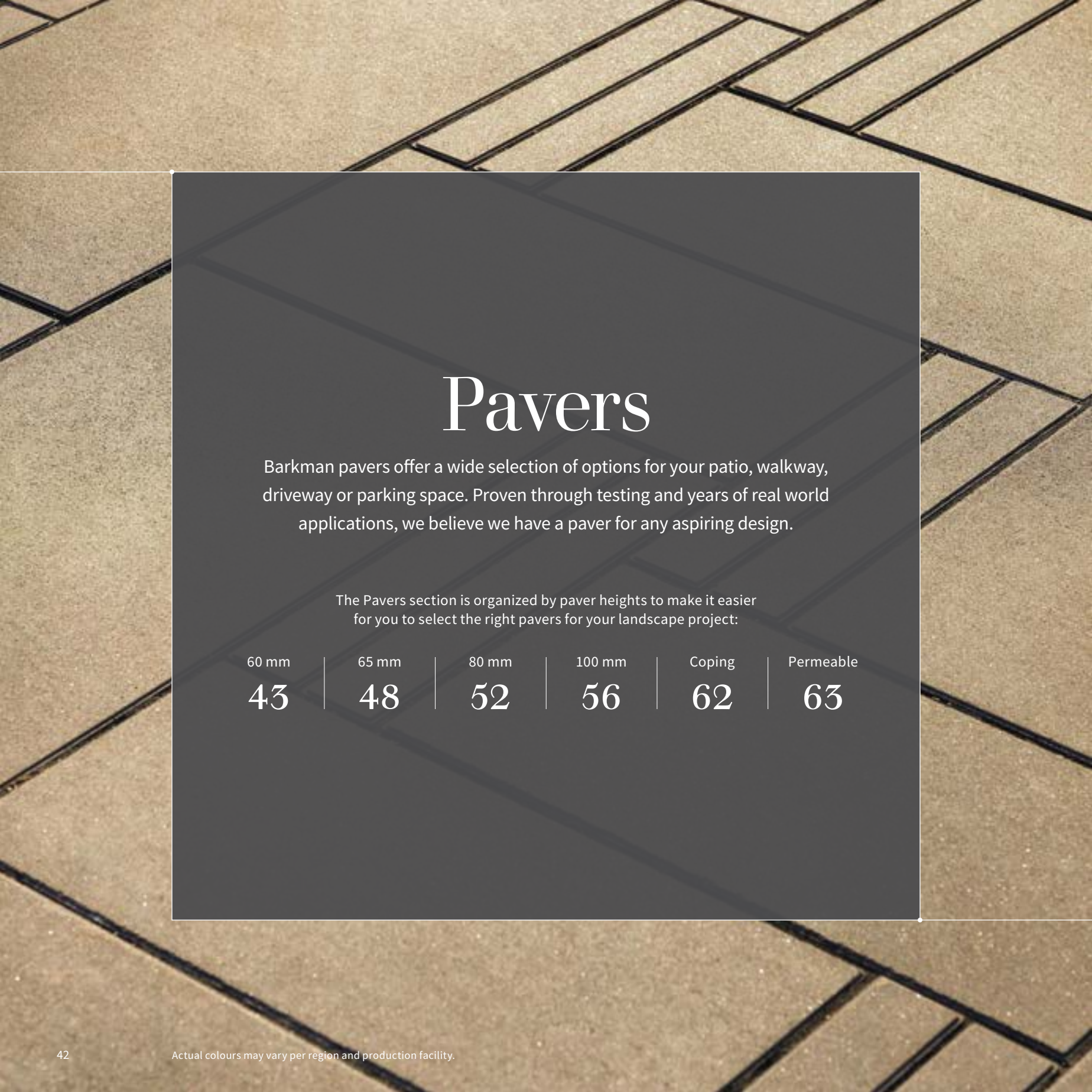
Start small, start something spectacular

We know that each space is as unique as the people who spend time in it. We created Small Spaces for first time homeowners, those on a limited project budget, or a small, urban backyard. Fashion a fantastic backyard that fits your life, exactly as you live it right now.



- ▲ Bridgewood Slabs (page 65)
- ▲ Terrace Slabs (page 71)
- ▶ Navarro Pavers (page 55)
- ◀ Hexagon 65mm Pavers (page 51)





Pavers

Barkman pavers offer a wide selection of options for your patio, walkway, driveway or parking space. Proven through testing and years of real world applications, we believe we have a paver for any aspiring design.

The Pavers section is organized by paver heights to make it easier for you to select the right pavers for your landscape project:

| | | | | | |
|-------|-------|-------|--------|--------|-----------|
| 60 mm | 65 mm | 80 mm | 100 mm | Coping | Permeable |
| 43 | 48 | 52 | 56 | 62 | 63 |

Flagstone 60mm



COLOURS



Antique Brown



Sierra Grey

SIZES (L x W x H)



457.3 x 379.1/228 x 60 mm
18 x 14.92 / 8.98 x 2.36 in

APPLICATIONS



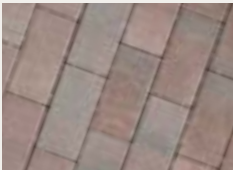
Pedestrian



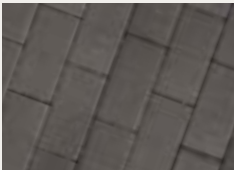
Holland 60mm



COLOURS



Antique Brown



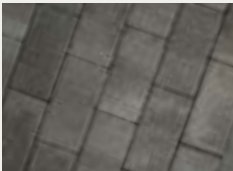
Charcoal



Natural



Sierra Grey



Graphite

BC AND AB ONLY



Desert Buff

SIZES (LxWxH)



¹210 x 210 x 60 mm
8.27 x 8.27 x 2.36 in



¹210 x 105 x 60 mm
8.27 x 4.13 x 2.36 in



Holland 8 cm
210 x 105 x 80 mm
8.27 x 4.13 x 3.15 in

APPLICATIONS



Pedestrian



Light Vehicular

The small Holland Paver size exists in both 60mm and 80mm thicknesses.



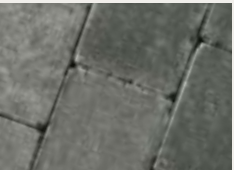
Roman 60mm



COLOURS



Antique Brown



Charcoal



Desert Buff



Sierra Grey

BC AND AB ONLY



Graphite



Natural

SIZES (LxWxH)



210 x 315 x 60 mm
8.27 x 12.40 x 2.36 in



210 x 262.5 x 60 mm
8.27 x 10.33 x 2.36 in



210 x 157.5 x 60 mm
8.27 x 6.20 x 2.36 in



210 x 105 x 60 mm
8.27 x 4.13 x 2.36 in

APPLICATIONS



Pedestrian



Light Vehicular



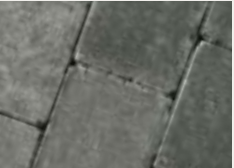
Roman Circle 60mm



COLOURS



Antique Brown



Charcoal

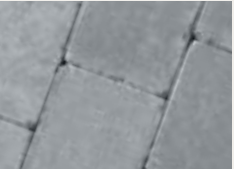


Sierra Grey

BC AND AB ONLY



Graphite



Natural

SIZES (OUTSIDE DIAMETER X H)

3148 x 60 mm
123.96 x 2.36 in

APPLICATIONS



Pedestrian



Light Vehicular



Verano 60mm



COLOURS



Charcoal



Sierra Grey



Sterling (new)

SIZES (L x W x H)



292.1 x 292.1 x 60 mm
11.5 x 11.5 x 2.36 in



292.1 x 146.1 x 60 mm
11.5 x 5.75 x 2.36 in



146.1 x 146.1 x 60 mm
5.75 x 5.75 x 2.36 in

APPLICATIONS



Pedestrian



Light Vehicular



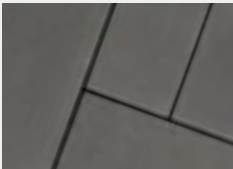


Broadway 300 x 300 x 65mm can be used as a Stepping Stone.

COLOURS



Amber



Ash



Charcoal



Natural



Obsidian (new)



Quartz

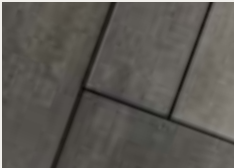


Sandstone



Sterling

BC AND AB ONLY



Graphite



Sierra Grey

SIZES (L x W x H)

300 x 150 x 65 mm
11.81 x 5.91 x 2.56 in

600 x 300 x 65 mm
23.62 x 11.81 x 2.56 in

300 x 300 x 65 mm
11.81 x 11.81 x 2.56 in

600 x 600 x 65 mm
23.62 x 23.62 x 2.56 in

APPLICATIONS



Pedestrian



Light Vehicular¹



Pedestrian



Permeable¹

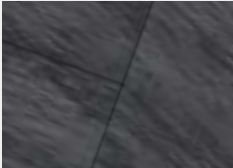
¹ 300x150x65mm can be used for light vehicular applications such as residential driveways. This size also qualifies as a Permeable Paver



Fjord 65mm



COLOURS



Bedrock



Glacier

SIZES (L x W x H)



300 x 300 x 65 mm
11.81 x 11.81 x 2.56 in



600 x 300 x 65 mm
23.62 x 11.81 x 2.56 in



600 x 600 x 65 mm
23.62 x 23.62 x 2.56 in

APPLICATIONS



Pedestrian



Hexagon 65mm



COLOURS



Ash



Charcoal



Natural

SIZES (L x W x H)



225 x 195 x 65
8.86 x 7.68 x 2.56

APPLICATIONS



Pedestrian



Light Vehicular



Hexagon blends well with Broadway 65mm since it uses the same spacers and chamfer.

Boardwalk 80mm BC and AB Only



COLOURS



Charcoal



Natural

SIZES (L x W x H)

362 x 119 x 80 mm
14.25 x 4.69 x 3.15 in

362 x 89 x 80 mm
14.25 x 3.50 x 3.15 in

322 x 119 x 80 mm
12.68 x 4.69 x 3.15 in

322 x 89 x 80 mm
12.68 x 3.50 x 3.15 in

282 x 119 x 80 mm
11.10 x 4.69 x 3.15 in

282 x 89 x 80 mm
11.10 x 3.50 x 3.15 in

242 x 119 x 80 mm
9.53 x 4.69 x 3.15 in

242 x 89 x 80 mm
9.53 x 3.50 x 3.15 in

All 8 sizes come in one pallet and are not sold individually.

APPLICATIONS



Pedestrian



Light Vehicular



Heavy Vehicular



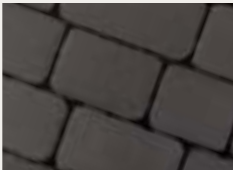
Permeable



Cobble 80mm



COLOURS



Charcoal

SIZES (L x W x H)

300 x 150 x 80 mm
11.81 x 5.91 x 3.15 in

260 x 150 x 80 mm
10.24 x 5.91 x 3.15 in

220 x 150 x 80 mm
8.66 x 5.91 x 3.15 in

180 x 150 x 80 mm
7.09 x 5.91 x 3.15 in

APPLICATIONS



Pedestrian



Light Vehicular



Permeable



All four sizes come in one pallet and are not sold individually.

Mesa Flagstone 80mm



COLOURS



Sierra Grey



Sterling

SIZES (LxWxH)



613.3 x 330.8 x 80 mm
24.14 x 13.02 x 3.15 in

APPLICATIONS



Pedestrian



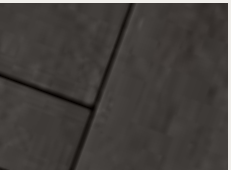
Light Vehicular



Navarro 80mm



COLOURS



Charcoal



Sierra Grey

SIZES (LxWxH)



306 x 459 x 80 mm
12.05 x 18.07 x 3.15 in



306 x 306 x 80 mm
12.05 x 12.05 x 3.15 in



306 x 153 x 80 mm
12.05 x 6.02 x 3.15 in

APPLICATIONS



Pedestrian



Light Vehicular



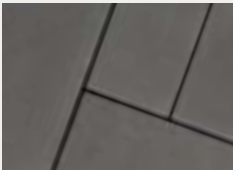
Broadway 100mm



COLOURS



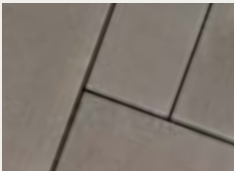
Amber



Ash



Charcoal



Natural



Obsidian (new)



Quartz



Sterling

SIZES (L x W x H)



¹300 x 150 x 100 mm
11.81 x 5.91 x 3.94 in



²900 x 450 x 100 mm
35.43 x 17.72 x 3.94 in



300 x 300 x 100 mm
11.81 x 11.81 x 3.94 in



²900 x 900 x 100 mm
35.43 x 35.43 x 3.94 in



600 x 300 x 100 mm
23.62 x 11.81 x 3.94 in

APPLICATIONS



Pedestrian



Light
Vehicular



Heavy
Vehicular



Permeable

¹ This size qualifies as a
Permeable Paver

² These sizes can only be used
for pedestrian applications.



Broadway Planks 100mm



COLOURS



Amber



Ash



Charcoal



Natural



Quartz



Sterling



Obsidian (new)

SIZES (L x W x H)

451 x 76 x 100 mm
17.76 x 2.99 x 3.94 in

400 x 100 x 100 mm
15.75 x 3.94 x 3.94 in

600 x 150 x 100 mm
23.62 x 5.91 x 3.94 in

APPLICATIONS



Pedestrian



Light Vehicular



Heavy Vehicular



Permeable



Combine these Plank sizes with other Broadway 100mm sizes to create endless possibilities in your landscape projects.

Broadway Weathered 100mm

NEW



COLOURS



Ash



Charcoal



Natural

SIZES (LxWxH)



¹300 x 150 x 100 mm
11.81 x 5.91 x 3.94 in



300 x 300 x 100 mm
11.81 x 11.81 x 3.94 in

APPLICATIONS



Pedestrian



Light Vehicular



Heavy Vehicular

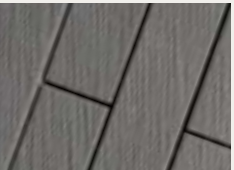


Permeable

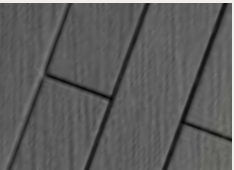
¹This size qualifies as a Permeable Paver



Broadway Contour 100mm



Ash



Charcoal



Natural



Sterling

Broadway Contour 100mm features a striated texture that's slip-resistant and adds a striking accent to any given space. It blends well with the Broadway product line and allows for a versatile array of patterns for different applications.

SIZES (LxWxH)



451 x 76 x 100 mm
17.76 x 2.99 x 3.94 in



400 x 100 x 100 mm
15.75 x 3.94 x 3.94 in



600 x 150 x 100 mm
23.62 x 5.91 x 3.94 in



600 x 300 x 100 mm
23.62 x 11.81 x 3.94 in

APPLICATIONS



Pedestrian



Light Vehicular



Heavy Vehicular



Permeable¹

¹600 x 300 x 100mm size does not qualify as a Permeable Paver



Bullnose 60mm Coping Paver



COLOUR



Charcoal

SIZES (LxWxH)



305 x 152 x 60 mm
12.00 x 6.00 x 2.36 in

APPLICATIONS



Pedestrian



Permeable and Erosion Control Pavements



Colonial Eco Paver

COLOUR

Special Order. Talk to your rep for details.

SIZES (LxWxH)



157 x 157 x 80 mm
6.18 x 6.18 x 3.15 in

APPLICATIONS



Pedestrian



Light Vehicular



Heavy Vehicular



Permeable



Holland Eco Paver

COLOUR

Special Order. Talk to your rep for details.

SIZES (LxWxH)



210 x 105 x 80 mm
8.27 x 4.13 x 3.15 in

APPLICATIONS



Pedestrian



Light Vehicular



Heavy Vehicular



Permeable



Turfstone Eco Paver

SIZES (LxWxH)



599 x 399 x 80 mm
23.58 x 15.71 x 3.15 in
Colour: Natural

APPLICATIONS



Pedestrian



Light Vehicular



Heavy Vehicular



Permeable



Slabs

From the rustic wood grains of Bridgewood to the bold colours and textures of Lexington, Barkman offers a wide variety of slabs to suit any architectural style.

Bridgewood



COLOURS



Cedar Brown



Weathered Grey

SIZES (L x W x H)



890 x 250 x 51 mm
35.04 x 9.84 x 2 in



595 x 250 x 51 mm
23.43 x 9.84 x 2 in



440 x 250 x 51 mm
17.32 x 9.84 x 2 in

APPLICATIONS



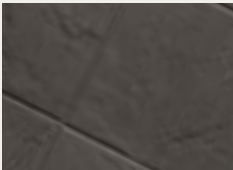
Pedestrian



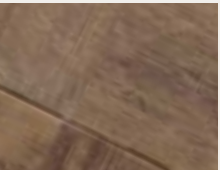
Brookside



COLOURS



Charcoal



Hazel



Sierra Grey

BC AND AB ONLY



Graphite

SIZES (LxWxH)



400 x 400 x 50 mm
15.75 x 15.75 x 1.97 in



400 x 600 x 50 mm
15.75 x 23.62 x 1.97 in

APPLICATIONS



Pedestrian



Diamond Face



COLOURS



Natural

SIZES (LxWxH)



610 x 762 x 51 mm
24 x 30 x 2 in



610 x 610 x 51 mm
24 x 24 x 2 in



457 x 457 x 51 mm
18 x 18 x 2 in

APPLICATIONS



Pedestrian



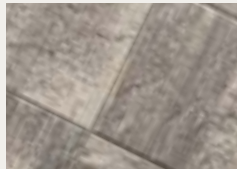
The Diamond Face Slabs now feature an enhanced diamond texture.



COLOURS



Flint

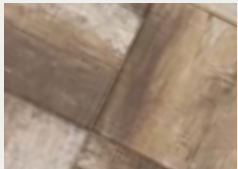


Sterling

SIZES (L x W x H)



400 x 400 x 50 mm
15.75 x 15.75 x 1.97 in



Sandstone



400 x 600 x 50 mm
15.75 x 23.62 x 1.97 in

APPLICATIONS



Pedestrian



COLOURS



Copper Canyon



Northern Charcoal



Fond du Lac



Pacific Grey

SIZES (L x W x H)



610 x 610 x 51 mm
24 x 24 x 2 in



457 x 610 x 51 mm
18 x 24 x 2 in



457 x 457 x 51 mm
18 x 18 x 2 in



305 x 457 x 51 mm
12 x 18 x 2 in



305 x 305 x 51 mm
12 x 12 x 2 in



305 x 152 x 51 mm
12 x 6 x 2 in

APPLICATIONS



Pedestrian



Rosetta® Grand Flagstone



COLOURS



Copper Canyon



Fond du Lac



Northern Charcoal



Pacific Grey

SIZES (L x W x H)



1067 x 965 x 51 mm
42 x 38 x 2 in

APPLICATIONS



Pedestrian



Terrace Slabs BC and AB Only



COLOURS



Charcoal



Graphite



Natural

SIZES (L x W x H)



610 x 610 x 51 mm
24 x 24 x 2 in

APPLICATIONS



Pedestrian



Rooftop





Walls & Steps

Barkman’s wide selection of retaining walls and steps are as versatile as they are stylish. Whatever your project, large or small, Barkman has the wall system for you.



COLOURS



Ash



Flint



Sterling

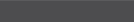
SIZES (H x W x D)



Standard
150 x 900 x 285 mm
5.9 x 35.43 x 11.22 in



Coping
150 x 900 x 285 mm
5.9 x 35.43 x 11.22 in



Corner
150 x 900 x 285 mm
5.9 x 35.43 x 11.22 in

APPLICATIONS



Garden Walls



Retaining Walls





COLOURS

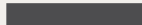


Ash

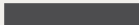


Charcoal

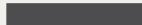
SIZES (HxWxD)



Standard
150 x 900 x 285 mm
5.9 x 35.43 x 11.22 in



Coping
150 x 900 x 285 mm
5.9 x 35.43 x 11.22 in



Corner
150 x 900 x 285 mm
5.9 x 35.43 x 11.22 in

APPLICATIONS



Garden Walls



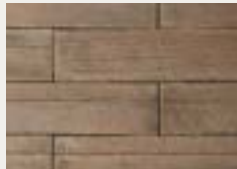
Retaining Walls



Bridgewood Wall



COLOURS



Cedar Brown



Weathered Grey

SIZES (HxWxD)



Standard
152 x 1067 x 203 mm
6 x 42 x 8 in

APPLICATIONS



Garden Walls



Retaining Walls



Rosetta® Dimensional Wall



COLOURS



Copper Canyon



Fond du Lac



Northern Charcoal



Pacific Grey

SIZES (H x W x D)

Straight

102 x 305 x 203 mm
4 x 12 x 8 in

Wedge

102 x 305 [229] x 203 mm
4 x 12 [9] x 8 in

Coping

64 x 610 x 318 mm
2.50 x 24 x 12.50 in

64 x 457 x 318 mm
2.50 x 18 x 12.50 in

64 x 483 x 318 mm
2.50 x 19 x 12.50 in

APPLICATIONS



Garden
Walls



Keystone Compac® III



COLOURS



Charcoal



Sierra Grey



Graphite

BC AND AB ONLY



Natural

SIZES (H x W x D)



Standard
203 x 457 x 305 mm
8 x 18 x 12 in



Corner
203 x 457.2 x 228.6 mm
8 x 18 x 9 in



Coping¹
100 x 450 x 300 mm
3.94 x 17.71 x 11.81 in

APPLICATIONS



Garden
Walls



Retaining
Walls

¹ Coping in Graphite is not available in BC





COLOURS



Charcoal



Natural

SIZES (H x W x D)

Standard

178 x 1000 x 305 mm
7 x 39.37 x 13.78 in



Graphite

Coping

178 x 1000 x 305 mm
7 x 39.37 x 13.78 in

APPLICATIONS



Garden Walls



Retaining Walls



COLOURS



Copper Canyon



Northern Charcoal



Fond du Lac



Pacific Grey

SIZES (H x W x D)

Wall Pallet

152 x 305 x 267 mm
6 x 12 x 10.5 in

152 x 533 x 267 mm
6 x 21 x 10.5 in

152 x 762 x 267 mm
6 x 30 x 10.5 in

152 x 1067 x 267 mm
6 x 42 x 10.5 in

Corner Pallet

152 x 533 x 267 mm
6 x 21 x 10.5 in

APPLICATIONS



Garden Walls



Retaining Walls

Note: All sizes come in one pallet and are not sold individually.





FACE OPTIONS



Boulder Face¹



LedgeStone Face



Stratum²

COLOURS



Natural Grey

MagnumStone™ can be left as natural grey or custom colour stained after installation.

SIZES (H x W x D)

Face Size
610 x 1219 x 610 mm
24 x 48 x 24 in

APPLICATIONS



Garden Walls



Retaining Walls

¹ Boulder Face is for Alberta only

² Stratum Face is for Vancouver Island only



COLOURS



Copper Canyon



Fond du Lac



Northern Charcoal



Pacific Grey

SIZES (H x W x D)

Pallet A
305 x 1067 x 610 [508] mm
12 x 42 x 24 [20] in
305 x 1219 x 610 [508] mm
12 x 48 x 24 [20] in
305 x 1524 x 610 [508] mm
12 x 60 x 24 [20] in
305 x 1676 x 610 [508] mm
12 x 66 x 24 [20] in

Pallet B
152 x 610 x 610 [508] mm
6 x 24 x 24 [20] in
152 x 914 x 610 [508] mm
6 x 36 x 24 [20] in
152 x 1219 x 610 [508] mm
6 x 48 x 24 [20] in
305 x 914 x 610 [508] mm
12 x 36 x 24 [20] in
305 x 1372 x 610 [508] mm
12 x 54 x 24 [20] in
305 x 1829 x 610 [508] mm
12 x 72 x 24 [20] in

Pallet C
152 x 610 x 610 [508] mm
6 x 24 x 24 [20] in
152 x 914 x 610 [508] mm
6 x 36 x 24 [20] in
610 x 1219 x 610 [508] mm
24 x 48 x 24 [20] in
457 x 1524 x 610 [508] mm
18 x 60 x 24 [20] in

Pallet D (Freestanding)
305 x 1524 x 762 mm
12 x 60 x 30 in
305 x 1219 x 762 mm
12 x 48 x 30 in
152 x 1219 x 762 mm
6 x 48 x 30 in

Pallet E (Freestanding)
305 x 1829 x 762 mm
12 x 72 x 30 in
305 x 914 x 762 mm
12 x 36 x 30 in
152 x 914 x 762 mm
6 x 36 x 30 in

Corner
305 x 1219 x 737 mm
12 x 48 x 30 in

APPLICATIONS



Garden Walls



Retaining Walls



Quarry Stone



COLOURS



Charcoal



Sierra Grey

SIZES (H x W x D)



Standard
102 x 305 x 203 mm
4 x 12 x 8 in

APPLICATIONS



Garden
Walls



Caliber Stone NEW



COLOURS



Charcoal



Sterling



Sierra Grey

SIZES (H x W x D)



Standard
102 x 305 x 203 mm
4 x 12 x 8 in

APPLICATIONS



Garden
Walls





COLOURS



Charcoal



Sierra Grey

SIZES (H x W x D)



Standard
102 x 203 [152] x 203 mm
4 x 8 [6] x 8 in



Coping
102 x 203 [152] x 203 mm
4 x 8 [6] x 8 in



Advanced Corner
102 x 280 [203] x 203 mm
4 x 11 [8] x 8 in

APPLICATIONS



Garden
Walls



COLOURS



Charcoal



Desert Buff



Sierra Grey

SIZES (H x W x D)



Standard
102 x 203 [152] x 203 mm
4 x 8 [6] x 8 in



Coping
102 x 203 [152] x 203 mm
4 x 8 [6] x 8 in



Advanced Corner
102 x 280 [203] x 203 mm
4 x 11 [8] x 8 in

APPLICATIONS

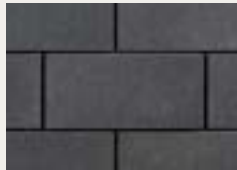


Garden
Walls





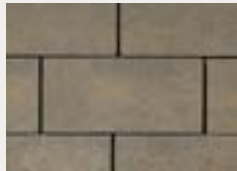
COLOURS



Charcoal



Graphite



Sierra Grey

SIZES (H x W x D)



Standard
100 x 211 x 190 mm
3.93 x 8.31 x 7.48 in



Coping
100 x 211 x 190 mm
3.93 x 8.31 x 7.48 in



Advanced Corner
100 x 283 x 190 mm
3.93 x 11.54 x 7.48 in

APPLICATIONS



Garden
Walls



Bridgewood Steps



COLOURS



Cedar Brown



Weathered Grey

SIZES (H x W x D)



1200 x 400 x 140 mm
47.24 x 17.75 x 5.51 in



Keystone Linear® Steps BC and AB only

NEW



COLOURS



Charcoal

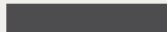


Graphite



Natural

SIZES (H x W x D)



Coping
178 x 1000 x 350 mm
7 x 39.37 x 13.78 in



Rosetta® Dimensional Steps



COLOURS



Copper Canyon



Fond du Lac



Northern Charcoal



Pacific Grey

SIZES (H x W x D)



3' length
914 x 457 x 178 mm
36 x 18 x 7 in



6' length
1829 x 762 x 178 mm
72 x 30 x 7 in



4' length
1219 x 457 x 178 mm
48 x 18 x 7 in



Rosetta® Irregular Steps



COLOURS



Copper Canyon



Fond du Lac



Northern Charcoal



Pacific Grey

SIZES (H x W x D)



1372 x 559 x 178 mm
54 x 22 x 7 in

1524 x 610 x 178 mm
60 x 24 x 7 in

1067 x 432 x 178 mm
42 x 17 x 7 in

1219 x 711 x 178 mm
48 x 28 x 7 in

1067 x 660 x 178 mm
42 x 26 x 7 in

1219 x 610 x 178 mm
48 x 24 x 7 in



Finishing Touches

With all that goes into a landscape project, you want to know that the job was finished properly. Our finishing products will make sure your project stays vibrant today, and for years to follow.

Edgers



I-Con Edger

COLOURS



Charcoal



Desert Buff



Natural
(BC and AB only)



Sierra Grey

SIZES (L x W x H)



314 x 92 x 102 mm
12.375 x 3.625 x 4 in



Granite Edger

COLOURS



Charcoal



Graphite
(BC and AB only)

SIZES (L x W x H)



311 x 102 x 102 mm
12.25 x 4 x 4 in



Edgers



Quarry Stone Edger NEW

COLOURS



Charcoal



Sierra Grey

SIZES (H x W x D)



102 x 102 x 203 mm
4 x 4 x 8 in



Base & Footing



Gator Base

Building a patio is hard work and one often overlooked piece is preparing the base.

For a light pedestrian patio, we recommend using 4–6 inches for your gravel base and one inch of sand. That’s a total excavation depth of 5–7 inches just for your base, never mind the paver height on top of that. However with using Gator base, you can place one inch of sand on your leveled native soil and place your Gator base on top, removing so much extra work.



Finishing



Polymeric Sand

Polybind Complete G2 is made with a state-of-the-art manufacturing process. Specifically, calibrated sand is mixed with sophisticated intelligent polymers.

This new generation of Intelligent Polymers neutralizes haze and dust. The polymeric sand application is now dust free and haze free. No blower is needed and the intelligent polymeric sand requires only one watering. Polybind Complete G2 is recommended for a variety of uses including pool decks, patios, footpaths, driveways, parking spaces, pavements, etc. Available in Nevada Tan, Oxford Grey, Ivory White and Jet Black.



Footing Pads

COLOUR



Natural

SIZES (L x W x H)



305 x 305 x 102 mm
12 x 12 x 4 in



457 x 457 x 152 mm
18 x 18 x 6 in



457 x 457 x 102 mm
18 x 18 x 4 in



610 x 610 x 152 mm
24 x 24 x 6 in



Snap Edge®

Snap Edge’s unique “Snip & Flex” feature allows total freedom when designing your driveway or sidewalk. You can create unlimited curves and angles in minutes, ensuring an aesthetically pleasing and structurally superior project. This flexibility and strength has made Snap Edge® the premier edging choice of professionals.

Landscape Kits

Landscape kits offer a cost-effective way to turn an outdoor space into something special without costly concrete work. Modular in design and timeless in appeal, Barkman Landscape Kits are an efficient way to enhance any space.

Fireplaces



Quarry Stone Fireplace

COLOURS



Sierra Grey

Charcoal Accent

SIZES (H x W x D)

2699 x 1397 x 1156 mm
106.25 x 55 x 45.5 in

Quarry Stone Fireplace Wood Storage

SIZE (H x W x D)

889 x 1016 x 914 mm
35 x 40 x 36 in



Quarry Stone Compact Fireplace

COLOURS



Sierra Grey

Charcoal Accent

SIZES (H x W x D)

1981 x 1118 x 1016 mm
78 x 44 x 40 in

Quarry Stone Compact Fireplace Wood Storage

SIZE (H x W x D)

965.2 x 813 x 711 mm
38 x 32 x 28 in



Fire Pits



Architextures Fire Pit

COLOURS



Ash



Flint



Sterling

SIZES (H x W x D)

400 x 1184 x 1184 (outside) mm
15.75 x 47 x 47 (outside) in

400 x 614 x 614 (inside) mm
15.75 x 24 x 24 (inside) in



Fire Pits



Quarry Stone Fire Pit

COLOURS



Charcoal



Sierra Grey

SIZES (H x W x D)

305 x 711 x 711 (inside) mm
12 x 28 x 28 (inside) in

305 x 1118 x 1118 (outside) mm
12 x 44 x 44 (outside) in



Bridgewood Fire Pit

COLOURS



Cedar Brown



Weathered Grey

SIZES (H x W x D)

305 x 864 x 864 (inside) mm
12 x 34 x 34 (inside) in

305 x 1270 x 1270 (outside) mm
12 x 50 x 50 (outside) in



Caliber Stone Fire Pit

COLOURS



Charcoal



Sierra Grey

SIZES (H x W x D)

305 x 711 x 711 (inside) mm
12 x 28 x 28 (inside) in

305 x 1118 x 1118 (outside) mm
12 x 44 x 44 (outside) in



Fire Pits



Rosetta® Belvedere Fire Pit

COLOURS



Copper Canyon



Fond du Lac



Northern Charcoal



Pacific Grey

SIZES (H x D)

381 x 940 (inside) mm
15 x 37 (inside) in
368.3 x (+/-) 73.2 (outside) mm
14.5 x (+/-) 58 (outside) in



Fire Pits



StackStone Fire Pit

COLOURS



Charcoal



Sierra Grey

SIZES (H x D)

305 x 635 (inside) mm
12 x 25 (inside) in
305 x 1067 (outside) mm
12 x 42 (outside) in



Rosetta® Dimensional Fire Pit

COLOURS



Copper Canyon



Fond du Lac



Northern Charcoal



Pacific Grey

SIZES (H x W x D)

305 x 711 x 711 mm
12 x 28 x 28 in
305 x 1118 x 1118 (outside) mm
12 x 44 x 44 (outside) in



Stackstone Fire Pit Coping and Liner

COLOURS



Charcoal



Natural

SIZES (H x D)

Coping (HxD)
51 x 1118 (outside) mm
2 x 44 (outside) in

51 x 635 (inside) mm
2 x 25 (inside) in

Liner (HxD)
356 x 762 mm
14 x 30 in

StackStone Fire Pit is sold separately. The Coping for the fire pit is sold separately and can be purchased as a set of 6 pieces. The liner is sold separately.

Compact Pizza Oven



Quarry Stone Compact Pizza Oven Kit

COLOURS (STORAGE UNIT)



Sierra Grey



Charcoal Accent

SIZES (H x W x D)

1969 x 814 x 787 mm
77.5 x 32.09 in

There are two components that make up our Quarry Stone Compact Pizza Oven Kit – the Quarry Stone Compact Pizza Oven Unit (Nonno Peppe) and the Quarry Stone Storage Unit. Each component is sold separately. Nonno Peppe pizza oven design may not be exactly as shown.



Important Information

Barkman Certified Accessories

A great hardscape begins with proper installation. That’s why we recommend and supply Barkman certified accessories like Alliance polymeric sand products and Snap Edge to protect your Barkman investment. Use Snap Edge to create unlimited curves and angles in minutes, ensuring an aesthetically pleasing and structurally superior landscape project. For more details, download the Barkman 2024 Specifications Guide at BarkmanConcrete.com

The Environment

At Barkman Concrete, we prioritize responsible material stewardship, creating precast concrete products that balance user benefits with environmental preservation. Our meticulous material selection, including recycled materials, enhances product performance while minimizing ecological impact.

This commitment to longevity and durability reduces the need for replacements, making Barkman’s precast concrete a sustainable choice for generations to come.

Quality and Support Pledge

We use high-quality materials and implement rigorous quality control measures throughout our manufacturing process, aiming to consistently deliver a product of superior quality. We also support our products with a large network of dealers and contractors. When you

need us, we’ll be there to help. For any questions, please contact us at quality@barkmanconcrete.com

Transferable Lifetime Warranty for Homeowners

Barkman Concrete warrants the structural integrity of our paving stone, slabs and retaining wall units. For homeowners, we offer a transferable lifetime warranty, where we will replace or repair at our option, without charge, any defective product installed and maintained to our guidelines under normal use. Commercial uses have specific warranties as well. For more information, please go to our website at BarkmanConcrete.com/about/warranty.

Actual Colours May Vary

Important: Actual colours may vary per region and production facility. Every effort has been made to ensure accuracy in the colour representations found in this product catalogue. However, due to the natural characteristics of concrete, the manufacturing process and print reproduction, actual colours in the final product may vary from that shown.

For the final color selection, it is advisable to visit your local dealer and choose from the available stocked products. Barkman strongly recommends inspecting the product and verifying its color upon receipt. If you notice any discrepancies, please reach out to your local dealer before proceeding with your project. Installing the product implies your acceptance of it as it is.

Efflorescence

Our warranty excludes efflorescence. Efflorescence is a natural phenomenon that affects all concrete products and sometimes manifests as a white dusty layer on the surface of the pavement.

Efflorescence does not affect the performance or the strength of the product in any way. Efflorescence will disappear over time or can be removed with efflorescence cleaner. For more information on this, you can read our blog at www.barkmanconcrete.com/blog/what-to-do-with-white-residue-on-pavers.

Installation and Project Estimation Support

Barkman provides easy-to-read installation guides that contain simple step-by-step instructions to help make installation a snap. Visit BarkmanConcrete.com/resources to download a copy. Our website and Barkman App also feature a project calculator that allows you to easily estimate the quantity of Barkman material and accessories you will need for your project.

Barkman does its best to ensure accuracy for all measurements of our paving stone, slabs, and walls. Measurements provided may vary slightly depending on laying application. Best practice is to always have physical product on site before pouring preset structures.



Compacting

To avoid damaging the surface of pavers, it is recommended to use a Paver Saver mat on a plate or a roller compactor during installation. This is a common practice for most concrete paver projects. Ask your equipment supplier for more details on how to get this accessory. Barkman disclaims responsibility for any damage resulting from improper use of compaction tools. Base compaction is critical to the longevity of the pavers. Ensure the base is prepared according to ICPI specifications.

Job Site Residue

When you use a saw to cut the pavers, you will produce water or dust that contains residue. This residue can stick to the pavers and make them look dirty if it dries up. You should rinse and remove the water or dust from the pavers as soon as possible. Sometimes, other sources of dirt, such as soil movement or weather conditions, can also cause residue on the pavers. You should clean these off right away, but they will not damage the product or your installation. This occurrence is not covered by our warranty.

Polymeric Haze

If you did not clean the polymeric joint sand off the top of the paver correctly, you might see some polymeric haze on your concrete products. This is not a problem for the quality of the product or your installation. The haze will go away naturally over time with rain and weather. You can also use a special cleaner or a pressure washer to remove it; you should ask your contractor or the polymeric sand company you used for further recommendations. This occurrence is not covered by our warranty.

Maintenance

Concrete products are exposed to the elements all year round, so they need some regular upkeep to keep them looking good and functioning well. You can use mild cleaners, water and chemicals that are suitable for concrete to remove dirt and stains from your products. You can also apply different kinds of protectant to shield your products from mother nature. By taking good care of your concrete products, you can enjoy their benefits for many years.

If you need more information on what cleaners and protectant to use, you can ask your local hardscape dealer/distributor, your contractor, contact us or search online.

Snow Removal

It is essential that snow removal equipment is equipped with adequate spacing, bumpers, and rubber blade guards to safeguard the paver's surface. Barkman disclaims responsibility for any damage resulting from the improper use snow removal equipment, which could lead to potential scuff marks on pavers and slabs. If salt is to be used, only salts using NaCl should be used and never salts with magnesium.

How to Order

Ordering Barkman products is as simple as calling or visiting one of our many dealers or contractors. Go to BarkmanConcrete.com/find-a-dealer for a full list of dealers and to find one in your area. Please be ready to specify product style and colour choice if required. If working directly with a contractor, please be sure to specify Barkman products to ensure Barkman quality. For commercial or municipal projects, go to BarkmanConcrete.com/commercial-solutions and contact our commercial product consultants. Note that all specifications in this product catalogue are nominal.

Basic Paver and Slab Installation

What You Will Need

Building Materials

- Bedding Material
- Base Material
- Joint Sand or Polymeric Sand
- Geotextile
- Paver Edge Restraint

Guides

- Screeding tool: 8'-10' long (use straight 2x4 or carpenters level)
- Two Levelling Guides: 10' long, 1" outer diameter (pipe, electrical conduit, wood strips, etc.)
- Wooden Stakes or Metal Pegs
- String
- String level
- Carpenters Pencil

Tools

- Hand Tamper
- Carpenters Level

- Trowel
- Rake
- Shovel
- Wheelbarrow
- Broom
- Rubber Mallet
- Tape Measure
- Safety Glasses

Equipment (available to rent)

- Plate Compactor (min.-5000 lbf) or Roller Compactor
- Concrete Saw with a Diamond Blade
- Jumping Jack or Sheep's Foot Compactor

Optional

- Gloves
- Knee Pads



Base & Bedding Recommendations

| | Bedding Material | Base Material | Advantages | Installation Notes |
|--------------------|---|--|---|--|
| Traditional Base | Course Sand <i>Alternate Names:</i> Concrete Sand (adhering to either ASTM C33 or CSA A23.1 FA1) | 3/4" crusher run, well-graded gravel <i>Alternate Names:</i> 3/4 down "A" Base | This base system has many years of successful use, and materials are readily available and often most economical. | |
| Free Draining Base | 1/8" to 1/4" crushed clear/clean stone. <i>Alternate Names:</i> 1/8", 1/4" chip or HPB (High Performance Bedding) | 3/4" crushed clear/clean stone <i>Alternate Names:</i> ASTM No.57 Fifty-Sevens | This base system is more resistant to frost heave and is not as easily damaged during installation by rain or foot traffic. | Geotextile is required to prevent soil particles from entering the clean base material. Subsoil must be sloped to drain water away from any structures, and towards a suitable runoff location or below grade drainage system. Final paver laying must not vary by more than 1/8". |

Design & Excavation

1. Mark out Your Design

a. Use your preferred method to mark out the outline of your design on the ground. String or spray paint are good options.

b. We recommend excavating at least 12" past your intended paver perimeter.

2. Set Elevations

a. Set stakes; mark the elevation and grade; set string lines to mark the top of finished patio. Slopes should be minimum of 1.5% or 1" for every 8'.

b. Grade stakes should be checked periodically to ensure they have not been disturbed.

3. Excavation (Table A)

IMPORTANT: Before any digging, contact your local utility companies for the location and depth of pipes, cables and conduits.

a. Calculate your Total Excavation Depth using the appropriate table for your jobsite based on the climate you live in.

Total Excavation Depth = Paver/slab thickness + 1" Bedding Sand + 4–8" Base Layer

b. Remove the dirt and sod below your string lines to match your Total Excavation Depth.

c. Compact the newly unearthed soil using the Jumping Jack or Sheep’s Foot Compactor. Compaction of the unearthed soil is critical to the performance of your paving project. Do this prior to installing geotextile and/or base layer.

Table A

Dry Climate

| Project | Paver/Slab Thickness | Bedding Material Layer | Minimum Base Thickness Guide* |
|----------------|----------------------|------------------------|-------------------------------|
| Patio/Sidewalk | x | 1" | 4" |
| Driveway | x | 1" | 6" |

Cold Climate/Wet Soil

| Project | Paver/Slab Thickness | Bedding Material Layer | Minimum Base Thickness Guide* |
|----------------|----------------------|------------------------|-------------------------------|
| Patio/Sidewalk | x | 1" | 6" |
| Driveway | x | 1" | 8" |

These recommended minimum base thickness levels are only general guidelines and required base thicknesses will vary based on soil structure. Every job site is unique so requirements may vary. When in doubt, consult a professional.

Base Layer Compaction

4. Install Geotextile (optional)

a. Geotextile reduces the likelihood of premature settling and rutting. Use it in areas where soil remains saturated part of the year, where there is freeze and thaw, or over clay and moist, silty soils.

b. Ensure minimum downslope overlap of 12".

c. Cover the compacted soil including the vertical sides, with geotextile.

5. Spread and Compact Your Base Layer

IMPORTANT: Do not install frozen base material or spread base material over frozen soil.

IMPORTANT: As you compact, check the base material moisture to ensure it is neither too wet or too dry. Clump some aggregate in your hand. It should retain its shape when dropped from 1 foot. If your aggregate is too dry, spray lightly with water.

a. Spread a layer of base material across your surface. Reference the items on Table A to calculate your required base thickness.

For 7000 lbf reversible plate compactors: Spread and compact up to 4" at a time. The base material should extend 6 inches beyond your intended paver perimeter. Base should be compacted so that a 10 inch spike should take 3 hard strikes with a 2lb hammer to drive into the base.

For 5,000 lbf reversible plate compactors: Spread and compact up to 2" at a time. The base material should extend 6 inches beyond your intended paver perimeter. Base should be compacted so that a 10 inch spike should take 3 hard strikes with a 2lb hammer to drive into the base.

b. Continue adding layers and compacting until you are 2" + Paver height away from top of soil.

6. Screed and Compact Your Final Base Layer

a. Lay your levelling guides (1" pipe, electrical conduit or wood strips) onto your compacted base.

b. Set the proper height of your levelling guides. Ensure that the bottom of the screed bar ends up being 1" above the compacted base.

c. Fill the area with your final base layer. Slide the 2x4 board along the levelling guides to spread and level the final base layer within 3/8" of the final grade. Compact the final base layer, as usual.

7. Confirm Your Final Base Height (Diagram A)

a. Place a test paver or slab on your base layer. If the paver or slab is more than 1" below your final grade height, add more base material, screed and compact until the 1" threshold is reached.

Edge Restraints & Bedding Material

8. Install Edge Restraint

IMPORTANT: An edge restraint should be installed after the base layer is compacted and prior to bedding sand.

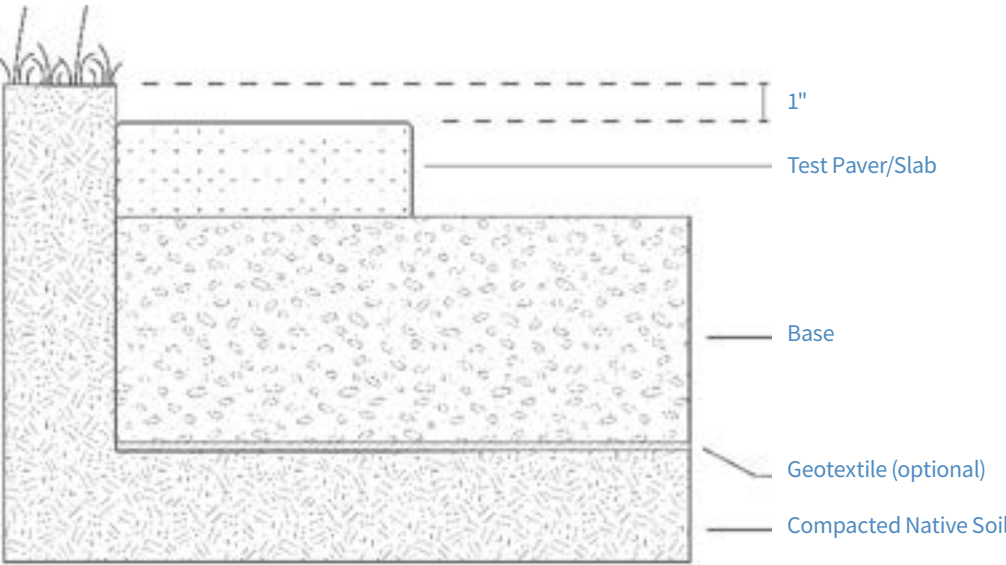


Diagram A

a. Install an edge restraint of your choice. We recommend Snap Edge. Carefully follow the manufacturer’s instructions.

9. Bedding Material

IMPORTANT: Do not use crushed limestone or stone dust as bedding sand. Do not install frozen or water saturated sand.

a. Lay your levelling guides (1" pipe, electrical conduit or wood strips) onto your compacted base.

b. Set the proper height of your levelling guides. Ensure that the bottom of the screed bar ends up being 1" above the compacted base.

c. Fill the area between the leveling guides with bedding material. Bedding material will be spread and levelled to an uncompacted nominal 1". (25 mm) thickness.

d. Slide the 2x4 board along the levelling guides to spread and level the bedding material.

Installing Pavers & Slabs

10. Lay Down Pavers

IMPORTANT: Do not use your house or building as reference line.

a. Use string lines as a guide for maintaining straight joint lines.

b. Pull and mix pavers or slabs from different bundles for better colour blending.

c. Cut or split pavers or slabs using a concrete saw or paver splitter. Use proper dust collection or a respirator when running a saw.

d. When installing pavers or slabs, ensure that each block is in contact with previously placed block as you place it. Avoid placing a paver or slab on the bedding material and then pushing it into place.

Compacting Pavers & Slabs

11. Compact Your Pavers or Slabs

IMPORTANT: Always use a Paver Saver Mat when using a plate compactor to avoid damaging your pavers.

a. Plate Compactor (minimum 5000 lbf): Used for pavers only.

Roller Compactor: Used for pavers or slabs

b. After placing your pavers or slabs, select the appropriate compactor for your surface. Compact with two passes at right angles made across the surface to set the pavers or slabs in the bedding sand and force the sand into the joints.

Joint Sand or Polymeric Sand

Finish your paver or slab installation with either joint sand or polymeric sand.

12a. Option 1: Install Polymeric Sand

IMPORTANT: For joint sand installation refer to page 7.

a. Carefully follow the manufacturer’s instructions. Each manufacturer has specific installation instructions regarding application, wetting and drying

b. Final surface height variation should not exceed 3/8" from final elevation.

c. Refer to icpi.org/barkmanconcrete for detailed Barkman ICPI technical specifications.

12b. Option 2: Install Joint Sand

a. Sweep dry joint sand into the spaces between your finished pavers. Joint sand can be finer than bedding sand.

b. Compact the surface.

IMPORTANT: Always use a Paver Saver Mat when using a plate compactor to avoid damaging your pavers.

c. Plate Compactor (minimum 5000 lbf): Used for pavers only.

d. Roller Compactor: Used for pavers or slabs.

e. Ensure joints are full. Apply more sand if necessary and make take two or three more passes with compactor.

Basic Wall Installation

Equipment Needed

- Broom, chisel, concrete saw, guide string, gloves, rubber mallet, knee pads, pencil, rake, level, shovel, stakes, tape measure, safety glasses, trowel, wheelbarrow

Getting Started

- Layout design on paper
- Estimate required amount of Barkman product, well-graded granular base, top soil, filter cloth and masonry adhesive needed (see BarkmanConcrete.com for product calculator)

Ground Preparation

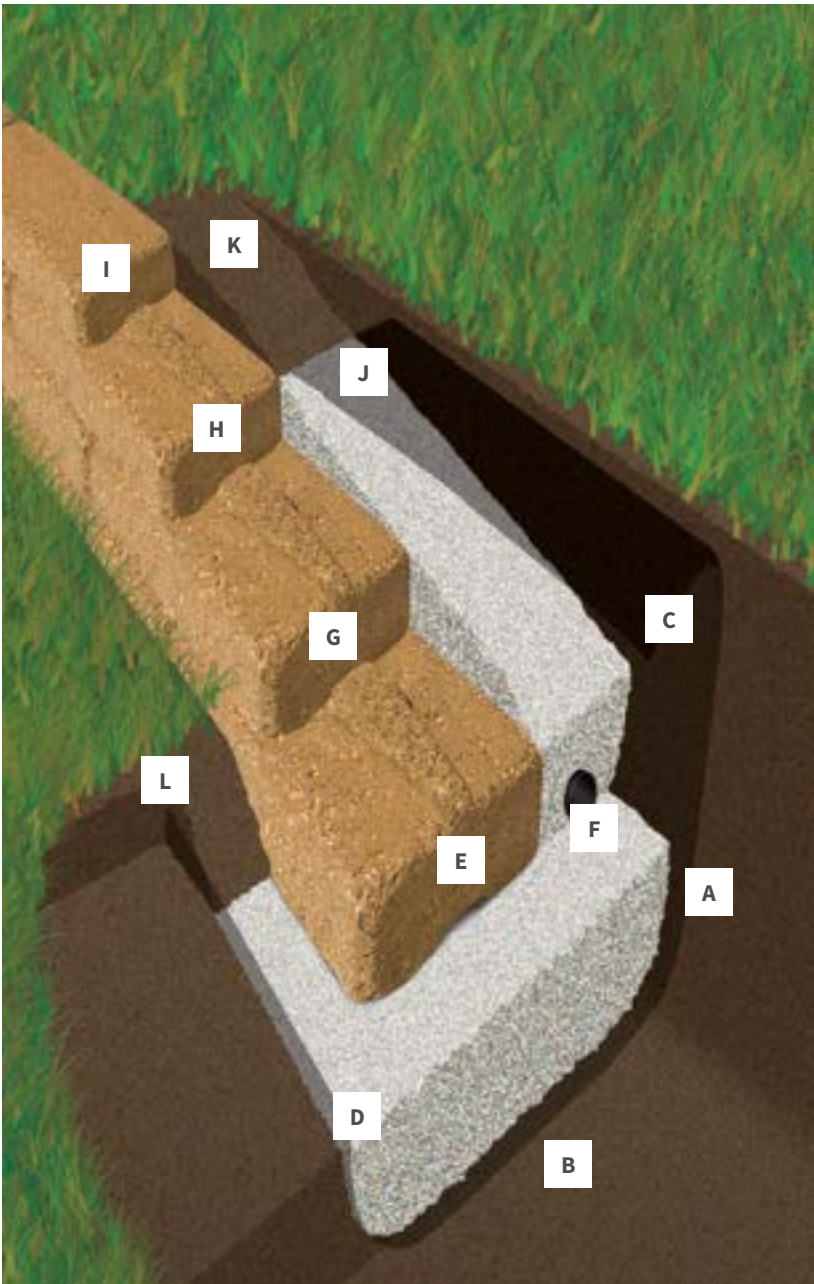
- Excavate a trench (A) 203–305 mm/8–12 in. deep and 406–610 mm/16–24 in. wide along the entire length of the wall (larger walls require larger trenches – see specific product installation guides for exact details)
- Compact base soil to ensure stability (B)
- Lay filter cloth (C) under granular base and against the exposed face of the excavation
- Spread 102–152 mm/4–6 in. layer of granular base (D), compact
- Position leveling string to mark location of the first course

Installing Units

- Lay first course (E) on prepared base (at least 51 mm/2 in. below grade), keep each unit level front to back and side to side
- Place drain tile (F) on prepared base, behind the first course
- Sweep top of first course, place next offsetting course (G), back fill with granular rock on top of filter cloth Repeat offsetting courses (H) and back fill until desired height is reached
- Secure last course (I) with adhesive and apply pressure to secure

Finishing

- 152 mm/6 in. from top of wall, pull filter cloth back towards the wall, on top of back fill (J)
- Fill remaining space with top soil (K) (cover the pulled back filter cloth) to make ground level with wall
- Fill remaining trench space in front of the wall with top soil (L) sloping away from the wall



Our Locations

Steinbach Office and Distribution Centre

152 Brandt Street
Steinbach, MB
R5G 0R2
T 204 326 3445
1 800 461 2278
F 204 326 5915
Steinbach@BarkmanConcrete.com

Winnipeg Office and Distribution Centre

901 Gateway Road
Winnipeg, MB
R2K 3L1
T 204 667 3310
1 800 342 2879
F 204 663 4854
Winnipeg@BarkmanConcrete.com

Calgary Office and Distribution Centre

813 McCool Street
Box 1136,
Crossfield, AB
T0M 0S0
T 403 946 4630
F 403 946 4631
Calgary@BarkmanConcrete.com

Vancouver Office

Port Moody, BC
T 1 800 461 2278 F 604 949 0321
Vancouver@BarkmanConcrete.com

Merritt Office and Distribution Centre

1132 Midday Valley Road
Merritt, BC
V1K 1M9
T 778 661 1408
Vancouver@BarkmanConcrete.com

Saskatoon Distribution Centre

3550 Idylwyld Drive North,
Saskatoon, SK
S7L 6G3
T 1 800 461 2278

barkman™

BarkmanConcrete.com



Made in Canada