

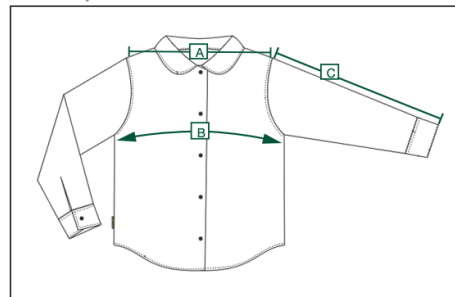
- Long Sleeve Peter Pan Blouse



60% Cotton 40% Polyester

Easy care fabric - machine wash and dry
 Non iron fabric
 Non-pilling fabric

Machine wash cold with like colours
 Do not bleach
 Tumble dry gentle low heat
 Iron low heat
 Do not dry clean



9000 - L/S Peter Pan Blouse		Y3XS	Y2XS	YXS	YS	YM	YL	YXL	S
	Neck Circumference	11 1/2	11 1/2	12	12 1/2	13	13 1/2	14	14 1/2
A	Shoulder width	10 3/4	11 1/4	12	12 5/8	13 1/2	13 3/4	15	15 1/2
B	Chest Circumference 1" under armhole	26	27	28 1/2	30 1/2	31 3/4	33 1/2	35 1/2	37 1/2
	Body Length from center back	17 1/2	18	19	19 1/2	20 1/2	21 3/4	23	24
C	Sleeve length from shoulder seam	13 1/2	14	15 1/2	16 1/2	18 1/2	19 1/2	21	22