



Certificate of Analysis

R&D

Client Information:
CYPRESS HEMP LLC
10771 Perkins Rd
Suite A
BATON ROUGE, LA 70810

Batch # 1272
Batch Date: 2023-03-15
Extracted From: Hemp

Test Reg State: Oregon

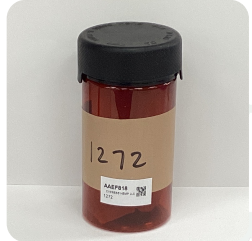
Order # CYP230316-090001
Order Date: 2023-03-16
Sample # AAEF818
Serving Number: 20.00000

Sampling Date: 2023-03-21
Lab Batch Date: 2023-03-21
Orig. Completion Date: 2023-04-20

Initial Gross Weight: 57.369 g
Net Weight: 26.169 g

Number of Units: 1
Net Weight per Package: 80.550 mg
Net Weight per Serving: 4.0275 mg

Statement of Amendment: Updated Potency; Louisiana format



Product Image



Potency Tested



Heavy Metals Passed



Pesticides Passed



Residual Solvents Passed



Pathogenic Microbiology Passed



Microbiology Petrifilm Passed

Potency 10
Specimen Weight: 1529.800 mg

Passed
SOP13.001 (LCUV)

Potency Summary

Delta 9 THC per Serving 0.185%	Total Active CBD per Serving 0.01941mg
Total CBG per Serving 0.016%	Total CBN per Serving 0.0001208mg
Other Cannabinoids per Serving 0.007%	Total Cannabinoids per Serving 0.02787mg
Total Active CBD Per Package 0.482%	Total Active THC per Serving 0.007451mg
Total Active THC Per Package 0.185%	Delta 9 THC per Package 0.149mg

Pieces For Panel: 6

Analyte	Dilution (1:n)	LOD (%)	LOQ (%)	Result (mg/g)	(%)
CBD	10.000	5.40E-5	0.0015	4.8220	0.4822
Delta-9 THC	10.000	1.30E-5	0.0015	1.8500	0.1850
CBG	10.000	2.48E-4	0.0015	0.1560	0.0156
CBDV	10.000	6.50E-5	0.0015	0.0470	0.0047
CBN	10.000	1.40E-5	0.0015	0.0290	0.0029
CBC	10.000	1.80E-5	0.0015	0.0200	0.0020
CBDA	10.000	1.00E-5	0.0015	<LOQ	<LOQ
CBGA	10.000	8.00E-5	0.0015	<LOQ	<LOQ
THCA-A	10.000	3.20E-5	0.0015	<LOQ	<LOQ
THCV	10.000	7.00E-6	0.0015	<LOQ	<LOQ
Total Active CBD	100.000			4.822	0.482
Total Active THC	100.000			1.850	0.185

Aixia Sun
Aixia Sun Lab Director/Principal Scientist
D.H.Sc., M.Sc., B.Sc., MT (AAB)

Definitions and Abbreviations used in this report: Total Active CBD = CBD + (CBD-A * 0.877), *Total CBDV = CBDV + (CBDVA * 0.87), Total Active THC = THCA-A * 0.877 + Delta 9 THC, Total THC = THCV + (THCVA * 0.87), CBG Total = (CBGA * 0.877) + CBG, CBN Total = (CBNA * 0.877) + CBN, Total CBC = CBC + (CBCA * 0.877), Total THC-O-Acetate = Delta 8 THC-O-Acetate + Delta 9 THC-O-Acetate, Total THCP = Delta8-THCP + Delta9-THCP, Other Cannabinoids Total = Total Cannabinoids - All the listed cannabinoids on the summary section, Total Detected Cannabinoids = Delta8-THC + Delta9-THC + Total CBN + CBT + CBE + Delta8-THCV + Total CBG + Total CBD + Total THCV + CBL + Total THC + Total CBC + Total CBDV + Delta10-THC + Total THC-O-Acetate + Total THCP, (mg/ml) = Milligrams per Milliliter, LOQ = Limit of Quantitation, LOD = Limit of Detection, Dilution = Dilution Factor (ppb) = Parts per Billion, (%) = Percent, (cfu/g) = Colony Forming Unit per Gram (cfu/g) = Colony Forming Unit per Gram, , LOD = Limit of Detection, (µg/g) = Microgram per Gram (ppm) = Parts per Million, (ppm) = (µg/g), (aw) = Water Activity, (mg/Kg) = Milligram per Kilogram, ACS uses simple acceptance criteria. Passed - Analyte/microbe is not detected or is at the level below the action limit per OR rule OAR 333-007-0390, OAR 333-007-0400. Sample not received via laboratory sampling. Failed - Analyte/microbe is at the level that equal or above the action limit per OR rule OAR 333-007-0390, OAR 333-007-0400. Revised report- see statement of amendment above.

This report shall not be reproduced, without written approval, from ACS Laboratory. The results of this report relate only to the material or product analyzed. Test results are confidential unless explicitly waived otherwise. Accredited by a third-party accrediting body as a competent testing laboratory pursuant to ISO/IEC 17025 of the International Organization for Standardization.





Certificate of Analysis

R&D

Client Information:
CYPRESS HEMP LLC
10771 Perkins Rd
Suite A
BATON ROUGE, LA 70810

Batch # 1272
Batch Date: 2023-03-15
Extracted From: Hemp

Test Reg State: Oregon

Order # CYP230316-090001
Order Date: 2023-03-16
Sample # AAEF818
Serving Number: 20.00000

Sampling Date: 2023-03-21
Lab Batch Date: 2023-03-21
Orig. Completion Date: 2023-04-20

Initial Gross Weight: 57.369 g
Net Weight: 26.169 g

Number of Units: 1
Net Weight per Package: 80.550 mg
Net Weight per Serving: 4.0275 mg

Pathogenic Microbiology - SE (MicroArray)
Specimen Weight: 1011.150 mg

Dilution Factor: 1.000

Analyte	Result (cfu/g)	Analyte	Result (cfu/g)
Salmonella	Absence in 1g	STEC E. Coli	Absence in 1g

Passed
SOP13.019 (Micro Array)

Microbiology (Petrifilm)
Specimen Weight: 996.800 mg

Dilution Factor: 1.000

Analyte	LOQ (cfu/g)	Action Level (cfu/g)	Result (cfu/g)	Analyte	LOQ (cfu/g)	Action Level (cfu/g)	Result (cfu/g)
Aerobic Bacteria	10	10000	<10	Total Enterobacteriaceae	10	1000	<10
E. Coli / Coliform	10	100	<10	Yeast/Mold	10	1000	10.000

Passed
SOP13.003 (Petrifilm)

Aixia Sun Lab Director/Principal Scientist
D.H.Sc., M.Sc., B.Sc., MT (AAB)

Definitions are found on page 1

This report shall not be reproduced, without written approval, from ACS Laboratory. The results of this report relate only to the material or product analyzed. Test results are confidential unless explicitly waived otherwise. Accredited by a third-party accrediting body as a competent testing laboratory pursuant to ISO/IEC 17025 of the International Organization for Standardization.





Certificate of Analysis

R&D

Client Information:

CYPRESS HEMP LLC
10771 Perkins Rd
Suite A
BATON ROUGE, LA 70810

Batch # 1272
Batch Date: 2023-03-15
Extracted From: Hemp

Test Reg State: Oregon

Order # CYP230316-090001
Order Date: 2023-03-16
Sample # AAEF818
Serving Number: 20.00000

Sampling Date: 2023-03-21
Lab Batch Date: 2023-03-21
Orig. Completion Date: 2023-04-20

Initial Gross Weight: 57.369 g
Net Weight: 26.169 g

Number of Units: 1
Net Weight per Package: 80.550 mg
Net Weight per Serving: 4.0275 mg



Heavy Metals

Specimen Weight: 246.840 mg

Passed
SOP13.048 (ICP-MS)

Dilution Factor: 202

Analyte	LOD (ppb)	LOQ (ppb)	Action Level (ppb)	Result (ppb)	Analyte	LOD (ppb)	LOQ (ppb)	Action Level (ppb)	Result (ppb)
Arsenic (As)	4.83	100	1500	<LOQ	Lead (Pb)	11.76	100	500	<LOQ
Cadmium (Cd)	.64	100	500	<LOQ	Mercury (Hg)	.58	100	3000	<LOQ



Residual Solvents - FL (CBD)

Specimen Weight: 12.200 mg

Passed
SOP13.039 (GCMS)

Dilution Factor: 1.000

Analyte	LOD (ppm)	LOQ (ppm)	Action Level (ppm)	Result (ppm)	Analyte	LOD (ppm)	LOQ (ppm)	Action Level (ppm)	Result (ppm)
1,1-Dichloroethene	0.0094	0.16	8	<LOQ	Heptane	0.0013	1.39	5000	<LOQ
1,2-Dichloroethane	0.0003	0.04	5	<LOQ	Hexane	0.068	1.17	290	<LOQ
Acetone	0.015	2.08	5000	<LOQ	Isopropyl alcohol	0.0048	1.39	500	<LOQ
Acetonitrile	0.06	1.17	410	<LOQ	Methanol	0.0005	0.69	3000	19.815
Benzene	0.0002	0.02	2	<LOQ	Methylene chloride	0.0029	2.43	600	<LOQ
Butanes	0.4167	2.5	2000	<LOQ	Pentane	0.037	2.08	5000	<LOQ
Chloroform	0.0001	0.04	60	<LOQ	Propane	0.031	5.83	2100	<LOQ
Ethanol	0.0021	2.78	5000	72.413	Toluene	0.0009	2.92	890	<LOQ
Ethyl Acetate	0.0012	1.11	5000	<LOQ	Total Xylenes	0.0001	2.92	2170	<LOQ
Ethyl Ether	0.0049	1.39	5000	<LOQ	Trichloroethylene	0.0014	0.49	80	<LOQ
Ethylene Oxide	0.0038	0.1	5	<LOQ					

Aixia Sun

Aixia Sun Lab Director/Principal Scientist
D.H.Sc., M.Sc., B.Sc., MT (AAB)

Definitions are found on page 1

This report shall not be reproduced, without written approval, from ACS Laboratory. The results of this report relate only to the material or product analyzed. Test results are confidential unless explicitly waived otherwise. Accredited by a third-party accrediting body as a competent testing laboratory pursuant to ISO/IEC 17025 of the International Organization for Standardization.





Certificate of Analysis

R&D

Client Information:
CYPRESS HEMP LLC
10771 Perkins Rd
Suite A
BATON ROUGE, LA 70810

Batch # 1272
Batch Date: 2023-03-15
Extracted From: Hemp

Test Reg State: Oregon

Order # CYP230316-090001
Order Date: 2023-03-16
Sample # AAEF818
Serving Number: 20.00000

Sampling Date: 2023-03-21
Lab Batch Date: 2023-03-21
Orig. Completion Date: 2023-04-20

Initial Gross Weight: 57.369 g
Net Weight: 26.169 g

Number of Units: 1
Net Weight per Package: 80.550 mg
Net Weight per Serving: 4.0275 mg

Pesticides
Specimen Weight: 257.420 mg

Passed
SOP13.007 (LCMS/GCMS)

Dilution Factor: 5.830

Analyte	LOD (ppb)	LOQ (ppb)	Action Level (ppb)	Result (ppb)	Analyte	LOD (ppb)	LOQ (ppb)	Action Level (ppb)	Result (ppb)
Abamectin	2.8800E-1	28.23	300	<LOQ	Fludioxonil	1.7400E+0	48	3000	<LOQ
Acephate	2.3000E-2	30	3000	<LOQ	Hexythiazox	4.9000E-2	30	2000	<LOQ
Acequinocyl	9.5640E+0	48	2000	<LOQ	Imazalil	2.4800E-1	30	100	<LOQ
Acetamiprid	5.2000E-2	30	3000	<LOQ	Imidacloprid	9.4000E-2	30	3000	<LOQ
Aldicarb	2.6000E-2	30	100	<LOQ	Kresoxim Methyl	4.2000E-2	30	1000	<LOQ
Azoxystrobin	8.1000E-2	10	3000	<LOQ	Malathion	8.2000E-2	30	2000	<LOQ
Bifenazate	1.4150E+0	30	3000	<LOQ	Metalaxyl	8.1000E-2	10	3000	<LOQ
Bifenthrin	4.3000E-2	30	500	<LOQ	Methiocarb	3.2000E-2	30	100	<LOQ
Boscalid	5.5000E-2	10	3000	<LOQ	Methomyl	2.2000E-2	30	100	<LOQ
Captan	6.1200E+0	30	3000	<LOQ	methyl-Parathion	1.7100E+0	10	100	<LOQ
Carbaryl	2.2000E-2	10	500	<LOQ	Mevinphos	2.1500E+0	10	100	<LOQ
Carbofuran	3.4000E-2	10	100	<LOQ	Myclobutanil	1.0290E+0	30	3000	<LOQ
Chlorantraniliprole	3.3000E-2	10	3000	<LOQ	Naled	9.5000E-2	30	500	<LOQ
Chlordane	1.0000E+1	10	100	<LOQ	Oxamyl	2.5000E-2	30	500	<LOQ
Chlorfenapyr	3.4000E-2	30	100	<LOQ	Pacllobutrazol	6.5000E-2	30	100	<LOQ
Chlomequat Chloride	1.0800E-1	10	3000	<LOQ	Pentachloronitrobenzene	1.3200E+0	10	200	<LOQ
Chlorpyrifos	3.5000E-2	30	100	<LOQ	Pemethrin	3.4300E-1	30	1000	<LOQ
Clofentezine	1.1900E-1	30	500	<LOQ	Phosmet	8.2000E-2	30	200	<LOQ
Coumaphos	3.7700E+0	48	100	<LOQ	Piperonylbutoxide	2.9000E-2	30	3000	<LOQ
Cyfluthrin	3.1100E+0	30	1000	<LOQ	Prallethrin	7.9800E-1	30	400	<LOQ
Cypermethrin	1.4490E+0	30	1000	<LOQ	Propiconazole	7.0000E-2	30	1000	<LOQ
Daminozide	8.8500E-1	30	100	<LOQ	Propoxur	4.6000E-2	30	100	<LOQ
Diazinon	4.4000E-2	30	200	<LOQ	Pyrethrins	2.3593E+1	30	1000	<LOQ
Dichlorvos	2.1820E+0	30	100	<LOQ	Pyridaben	3.2000E-2	30	3000	<LOQ
Dimethoate	2.1000E-2	30	100	<LOQ	Spinetoram	8.0000E-2	10	3000	<LOQ
Dimethomorph	5.8300E+0	48	3000	<LOQ	Spinosad	8.8000E-2	30	3000	<LOQ
Ethoprophos	3.6000E-1	30	100	<LOQ	Spiromesifen	2.6100E-1	30	3000	<LOQ
Etofenprox	1.1600E-1	30	100	<LOQ	Spirotetramat	8.9000E-2	30	3000	<LOQ
Etoxazole	9.5000E-2	30	1500	<LOQ	Spiroxamine	1.3100E-1	30	100	<LOQ
Fenhexamid	5.1000E-1	10	3000	<LOQ	Tebuconazole	6.7000E-2	30	1000	<LOQ
Fenoxycarb	1.0700E-1	30	100	<LOQ	Thiacloprid	6.4000E-2	30	100	<LOQ
Fenpyroximate	1.3800E-1	30	2000	<LOQ	Thiamethoxam	5.0000E-2	30	1000	<LOQ
Fipronil	1.0700E-1	30	100	<LOQ	Trifloxystrobin	3.7000E-2	30	3000	<LOQ
Flonicamid	5.1700E-1	30	2000	<LOQ					

Aixia Sun Lab Director/Principal Scientist
D.H.Sc., M.Sc., B.Sc., MT (AAB)

Definitions are found on page 1

This report shall not be reproduced, without written approval, from ACS Laboratory. The results of this report relate only to the material or product analyzed. Test results are confidential unless explicitly waived otherwise. Accredited by a third-party accrediting body as a competent testing laboratory pursuant to ISO/IEC 17025 of the International Organization for Standardization.

