



DEA No. RA0571996
FL License # CMTL-0003
CLIA No. 10D1094068

Certificate of Analysis

Compliance Test

D8 ORGANICS LLC
3009 Louisville Ave
Monroe, LOUISIANA 71201

Batch # 000000483
Batch Date: 2022-08-16
Extracted From: Industrial Hemp

Test Reg State: Florida

Production Facility: 318 Labz
Production Date: 2022-08-16

Order # D80220816-100001
Order Date: 2022-08-16
Sample # AADG587

Sampling Date: 2022-08-19
Lab Batch Date: 2022-08-19
Completion Date: 2022-08-25

Initial Gross Weight: 50.059 g
Net Weight: 2.039 g

Number of Units: 1
Net Weight per Unit: 2039.000 mg



Potency
Tested

Product Image

Delta 8/Delta 10 Potency 12

Tested
SOP13.043 (LCUV)

Potency Summary

Specimen Weight: 43.700 mg

Analyte	LOD (%)	LOQ (%)	Result (mg/g)	(%)
CBC	1.80E-5	0.001	198.630	19.883
Delta-8 THC	2.60E-6	0.001	4.340	0.434
CSB	5.40E-6	0.001		<LOQ
CBD	1.00E-5	0.001		<LOQ
CBDV	6.50E-6	0.001		<LOQ
CBG	2.48E-4	0.001		<LOQ
CBGA	8.00E-6	0.001		<LOQ
CBN	1.40E-5	0.001		<LOQ
Delta-10 THC	3.00E-6	0.001		<LOQ
Delta-9 THC	1.30E-5	0.1		<LOQ
THCA	3.20E-5	0.001		<LOQ
THCV	7.00E-6	0.001		<LOQ

0.434%	Total Delta 8 8.850mg	-	Total Delta 10 None Detected
-	Total THC None Detected	-	Total CBD None Detected
-	Total CBG None Detected	-	Total CBN None Detected
19.883%	Other Cannabinoids 405.410mg	20.317%	Total Cannabinoids 414.260mg

Xuelli Gao
Xuelli Gao
Lab Toxicologist
Ph.D., DABT

Aixia Sun
Aixia Sun
Lab Director/Principal Scientist
D.H.Sc., M.Sc., B.Sc., MT (AAB)



Definitions and Abbreviations used in this report: Total CBD = CBD + (CBD-A * 0.877); *Total CBDV = CBDV + (CBDVA * 0.87); Total THC = THCA-A * 0.877 + Delta 9 THC; Total THCV = THCV + (THCVA * 0.87); CBG Total = (CBGA * 0.877) + CBG; CBN Total = (CBNA * 0.877) + CBN; Total CBC = CBC + (CBCA * 0.877); Total THC-O-Acetate = Delta 8 THC-O-Acetate + Delta 9 THC-O-Acetate; Other Cannabinoids Total = Total Cannabinoids - All the listed cannabinoids on the summary section; Total Detected Cannabinoids = Delta-8-THC + Delta-9-THC + Total CBN + CBT + Delta-8-THCV + Total CBG + Total CBD + Total THCV + CBL + Total THC + Total CBC + Total CBDV + Delta-10-THC + Total THC-O-Acetate; Analyte Details above show the Dry Weight Concentrations unless specified as 12% moisture concentration. (mg/ml) = Milligrams per Milliliter, LOQ = Limit of Quantitation, LOD = Limit of Detection, Dilution = Dilution Factor (ppb) = Parts per Billion, (%) = Percent, (cfu/g) = Colony Forming Unit per Gram (cfu/g) = Colony Forming Unit per Gram, LOD = Limit of Detection, (µg/g) = Microgram per Gram (ppm) = Parts per Million, (ppm) = (µg/g), (aw) = aw (area ratio) = Area Ratio, (mg/Kg) = Milligram per Kilogram, *Measurement of Uncertainty = +/- 10%.

This report shall not be reproduced, without written approval, from ACS Laboratory. The results of this report relate only to the material or product analyzed. Test results are confidential unless explicitly waived otherwise. Accredited by a third-party accrediting body as a competent testing laboratory pursuant to ISO/IEC 17025 of the International Organization for Standardization.



DEA No. RA0571996
FL License # CMTL-0003
CLIA No. 10D1094068

Certificate of Analysis

Compliance Test

D8 ORGANICS LLC
567 S HOLLYWOOD RD
HOUMA, LOUISIANA 70360

Batch # 00000243
Batch Date: 2022-03-23
Extracted From: Industrial Hemp

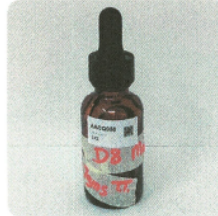
Sampling Method: MSP 7.3.1
Test Reg State: Florida

Production Facility: 318 Labz
Production Date: 2022-03-23

Order # D80220323-020001
Order Date: 2022-03-23
Sample # AACQ058

Sampling Date: 2022-03-28
Lab Batch Date: 2022-03-28
Completion Date: 2022-04-01

Initial Gross Weight: 59.406 g
Volume: 30 ml



Product Image

- Potency Tested**
- Terpenes Tested**
- Heavy Metals Passed**
- Mycotoxins Passed**
- Pesticides Passed**
- Residual Solvents Passed**
- Listeria Monocytogenes Passed**
- Pathogenic Passed**

Delta 8/Delta 10 Potency 12

Specimen Weight: 58.330 mg

Analyte	LOD (%)	LOQ (%)	Result (mg/g)	(%)
Delta-8 THC	0.000026	0.001	705.100	70.510
Delta-9 THC	0.000013	0.001	147.300	14.730
CBD	0.000054	0.001	15.300	1.530
CBC	0.000018	0.001	<LOQ	<LOQ
THCA-A	0.000032	0.001	<LOQ	<LOQ
Delta-10 THC	0.000003	0.001	<LOQ	<LOQ
CBN	0.000014	0.001	<LOQ	<LOQ
CBGA	0.000008	0.001	<LOQ	<LOQ
CBG	0.000248	0.001	<LOQ	<LOQ
CBDV	0.000065	0.001	<LOQ	<LOQ
CBDA	0.000001	0.001	<LOQ	<LOQ
THCV	0.000007	0.001	<LOQ	<LOQ

Tested (LCUV)

Potency Summary

Total Delta 8 70.510%	-	Total Delta 10 None Detected
Total THC 14.730%	-	Total CBD 1.530%
Total CBG None Detected	-	Total CBN None Detected
Other Cannabinoids None Detected	-	Total Cannabinoids 86.770%

Terpenes Summary

Analyte	Result (mg/g) (%)
Total Terpenes:	0.000%

Detailed Terpenes Analysis is on the following page

Xueli Gao
Xueli Gao
Ph.D., DABT
Lab Toxicologist

Aixia Sun
Aixia Sun
D.H.Sc., M.Sc., B.Sc., MT (AA8)
Lab Director/Principal Scientist



Definitions and Abbreviations used in this report: *Total CBD = CBD + (CBD-A * 0.877), *Total CBDV = CBDV + (CBDVA * 0.87), *Total THC = THCA-A * 0.877 + Delta 9 THC, *Total THCV = THCV + (THCVA * 0.87), *CBG Total = (CBGA * 0.877) + CBG, *CBN Total = (CBNA * 0.877) + CBN, *Total CBC = CBC + (CBCA * 0.877), *Total THC-O-Acetate = Delta 8 THC-O-Acetate + Delta 9 THC-O-Acetate, *Other Cannabinoids Total = Total Cannabinoids - All the listed cannabinoids on the summary section, *Total Detected Cannabinoids = Delta8-THC + Total CBN + CBT + Delta8-THCV + Total CBG + Total CBD + Total THCV + CBL + Total THC + Total CBDV + Total CBDV + Delta10-THC + Total THC-O-Acetate, *Analyte Details above show the Dry Weight Concentrations unless specified as % moisture concentration, (mg/ml) = Milligrams per Milliliter, LOQ = Limit of Quantitation, LOD = Limit of Detection, Dilution = Dilution Factor (ppb) = Parts per Billion, (%) = Percent, (cfu/g) = Colony Forming Unit per Gram (cfu/g) = Colony Forming Unit per Gram, LOD = Limit of Detection, (µg/g) = Microgram per Gram (ppm) = Parts per Million, (ppm) = (µg/g), (aw) = aw (area ratio) = Area Ratio, (mg/Kg) = Milligram per Kilogram, *Measurement of Uncertainty = +/- 10%

This report shall not be reproduced, without written approval, from ACS Laboratory. The results of this report relate only to the material or product analyzed. Test results are confidential unless explicitly waived otherwise. Accredited by a third-party accrediting body as a competent testing laboratory pursuant to ISO/IEC 17025 of the International Organization for Standardization.



D8 Distillate
Sample Matrix:
CBD/HEMP
Derivative Products
(Ingestion)



DEA No. RA0571996
FL License # CMTL-0003
CLIA No. 10D1094068

Certificate of Analysis

Compliance Test

D8 ORGANICS LLC
567 S HOLLYWOOD RD
HOUMA, LOUISIANA 70360

Batch # 00000243
Batch Date: 2022-03-23
Extracted From: Industrial Hemp

Sampling Method: MSP 7.3.1
Test Reg State: Florida

Production Facility: 318 Labz
Production Date: 2022-03-23

Order # D80220323-020001
Order Date: 2022-03-23
Sample # AACQ058

Sampling Date: 2022-03-28
Lab Batch Date: 2022-03-28
Completion Date: 2022-04-01

Initial Gross Weight: 59.406 g
Volume: 30 ml

Terpenes

Specimen Weight: 58.330 mg

Tested
(GC/GCMS)

Dilution Factor: 20.000

Analyte	LOQ (%)	Result (mg/g)	(%)	Analyte	LOQ (%)	Result (mg/g)	(%)
(+)-Cedrol	0.002	<LOQ	<LOQ	(R)-(+)-Limonene	0.002	<LOQ	<LOQ
Nerol	0.002	<LOQ	<LOQ	beta-Myrcene	0.002	<LOQ	<LOQ
Geranyl acetate	0.002	<LOQ	<LOQ	3-Carene	0.002	<LOQ	<LOQ
Guaiol	0.002	<LOQ	<LOQ	alpha-Bisabolol	0.002	<LOQ	<LOQ
Hexahydrothymol	0.002	<LOQ	<LOQ	alpha-Cedrene	0.002	<LOQ	<LOQ
Isoborneol	0.002	<LOQ	<LOQ	alpha-Humulene	0.002	<LOQ	<LOQ
Isopulegol	0.002	<LOQ	<LOQ	alpha-Phellandrene	0.002	<LOQ	<LOQ
Linalool	0.002	<LOQ	<LOQ	alpha-Pinene	0.002	<LOQ	<LOQ
Ocimene	0.000	<LOQ	<LOQ	alpha-Terpinene	0.002	<LOQ	<LOQ
Gamma-Terpinene	0.002	<LOQ	<LOQ	beta-Pinene	0.002	<LOQ	<LOQ
Pulegone	0.002	<LOQ	<LOQ	Fenchone	0.002	<LOQ	<LOQ
Sabinene	0.002	<LOQ	<LOQ	Borneol	0.004	<LOQ	<LOQ
Sabinene Hydrate	0.002	<LOQ	<LOQ	Camphene	0.002	<LOQ	<LOQ
Terpinolene	0.002	<LOQ	<LOQ	Camphors	0.006	<LOQ	<LOQ
Total Terpeneol	0.001	<LOQ	<LOQ	Caryophyllene oxide	0.002	<LOQ	<LOQ
trans-Caryophyllene	0.002	<LOQ	<LOQ	cis-Nerolidol	0.002	<LOQ	<LOQ
trans-Nerolidol	0.002	<LOQ	<LOQ	Eucalyptol	0.002	<LOQ	<LOQ
Geraniol	0.002	<LOQ	<LOQ	Farnesene	0.002	<LOQ	<LOQ
Fenchyl Alcohol	0.002	<LOQ	<LOQ	Valencene	0.002	<LOQ	<LOQ

Total Terpenes: 0.000%

Mycotoxins

Specimen Weight: 255.700 mg

Passed
(LCMS)

Heavy Metals

Specimen Weight: 253.640 mg

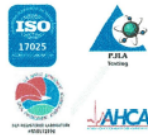
Passed
(ICP-MS)

Dilution Factor: 5.866

Analyte	LOQ (ppb)	Action Level (ppb)	Result (ppb)	Analyte	LOQ (ppb)	Action Level (ppb)	Result (ppb)	Analyte	LOQ (ppb)	Action Level (ppb)	Result (ppb)
Aflatoxin B1	6	20	<LOQ	Aflatoxin G2	6	20	<LOQ	Arsenic (As)	100	1500	<LOQ
Aflatoxin B2	6	20	<LOQ	Ochratoxin A	12	20	<LOQ	Cadmium (Cd)	100	500	<LOQ
Aflatoxin G1	6	20	<LOQ					Mercury (Hg)	100	3000	<LOQ

Xueli Gao
Ph.D., DABT
Lab Toxicologist

Aixia Sun
D.H.Sc., M.Sc., B.Sc., MT (AAB)
Lab Director/Principal Scientist



Definitions and Abbreviations used in this report: *Total CBD = CBD + (CBD-A * 0.877), **Total CBDV = CBDV + (CBDVA * 0.87), *Total THC = THCA-A * 0.877 + Delta 9 THC, **Total THCV = THCV + (THCVA * 0.87), *CBG Total = (CBGA * 0.877) + CBG, *CBN Total = (CBNA * 0.877) + CBN, *Total CBC = CBC + (CBCA * 0.877), *Total THC-O-Acetate = Delta 8 THC-O-Acetate + Delta 9 THC-O-Acetate, *Other Cannabinoids Total = Total Cannabinoids - All the listed cannabinoids on the summary section, *Total Detected Cannabinoids = Delta8-THC + Total CBN + CBT + Delta8-THCV + Total CBG + Total CBD + Total THCV + CBL + Total THC + Total CBC + Total CBDV + Delta10-THC + Total THC-O-Acetate, *Analyte Details above show the Dry Weight Concentrations unless specified as 12% moisture concentration. (mg/ml) = Milligrams per Milliliter, LOQ = Limit of Quantitation, LOD = Limit of Detection, Dilution = Dilution Factor (ppb) = Parts per Billion, (%) = Percent, (cfu/g) = Colony Forming Unit per Gram (cfu/g) = Colony Forming Unit per Gram, LOD = Limit of Detection, (µg/g) = Microgram per Gram (ppm) = Parts per Million, (ppm) = (µg/g), (aw) = aw (area ratio) = Area Ratio, (mg/Kg) = Milligram per Kilogram, *Measurement of Uncertainty = +/- 10%

This report shall not be reproduced, without written approval, from ACS Laboratory. The results of this report relate only to the material or product analyzed. Test results are confidential unless explicitly waived otherwise. Accredited by a third-party accrediting body as a competent testing laboratory pursuant to ISO/IEC 17025 of the International Organization for Standardization.



D8 Distillate
Sample Matrix:
CBD/HEMP
Derivative Products
(Ingestion)



DEA No. RA0571996
FL License # CMTL-0003
CLIA No. 10D1094068

Certificate of Analysis
Compliance Test

D8 ORGANICS LLC
567 S HOLLYWOOD RD
HOUMA, LOUISIANA 70360

Batch # 00000243
Batch Date: 2022-03-23
Extracted From: Industrial Hemp

Sampling Method: MSP 7.3.1
Test Reg State: Florida

Production Facility: 318 Labz
Production Date: 2022-03-23

Order # D80220323-020001
Order Date: 2022-03-23
Sample # AACQ058

Sampling Date: 2022-03-28
Lab Batch Date: 2022-03-28
Completion Date: 2022-04-01

Initial Gross Weight: 59.406 g
Volume: 30 ml

Pesticides FL V4
Specimen Weight: 255.700 mg

Dilution Factor: 5.866

Analyte	LOQ (ppb)	Action Level (ppb)	Result (ppb)	Analyte	LOQ (ppb)	Action Level (ppb)	Result (ppb)
Abamectin	28.23	300	<LOQ	Fludioxonil	48	3000	<LOQ
Acephate	30	3000	<LOQ	Hexythiazox	30	2000	<LOQ
Acequinocyl	48	2000	<LOQ	Imazalil	30	100	<LOQ
Acetamiprid	30	3000	<LOQ	Imidacloprid	30	3000	<LOQ
Aldicarb	30	100	<LOQ	Kresoxim Methyl	30	1000	<LOQ
Azoxystrobin	10	3000	<LOQ	Malathion	30	2000	<LOQ
Bifenazate	30	3000	<LOQ	Metaxyl	10	3000	<LOQ
Bifenthrin	30	500	<LOQ	Methoacarb	30	100	<LOQ
Boscalid	10	3000	<LOQ	Methomyl	30	100	<LOQ
Captan	30	3000	<LOQ	methyl-Parathion	10	100	<LOQ
Carbaryl	10	500	<LOQ	Mevinphos	10	100	<LOQ
Carbofuran	10	100	<LOQ	Methidathion	30	3000	<LOQ
Chlorantraniliprole	10	3000	<LOQ	Naled	30	500	<LOQ
Chlorfane	10	100	<LOQ	Oxamyl	30	500	<LOQ
Chlorfepyr	30	100	<LOQ	Paclotrazol	30	100	<LOQ
Chlorquart Chloride	10	3000	<LOQ	Pentachloronitrobenzene	10	200	<LOQ
Chlorpyrifos	30	100	<LOQ	Permethrin	30	1000	<LOQ
Clofentezine	30	500	<LOQ	Phosmet	30	200	<LOQ
Coumaphos	48	100	<LOQ	Piperonylbutoxide	30	3000	<LOQ
Cyfluthrin	30	1000	<LOQ	Prallethrin	30	400	<LOQ
Cypermethrin	30	1000	<LOQ	Propiconazole	30	1000	<LOQ
Daminozide	30	100	<LOQ	Propoxur	30	100	<LOQ
Diazinon	30	200	<LOQ	Pyrethrins	30	1000	<LOQ
Dichlorvos	30	100	<LOQ	Pyridaben	30	3000	<LOQ
Dimethoate	30	100	<LOQ	Spinetoram	10	3000	<LOQ
Dimethomorph	48	3000	<LOQ	Spirosad	30	3000	<LOQ
Ethoprophos	30	100	<LOQ	Spiromesifen	30	3000	<LOQ
Etofenprox	30	100	<LOQ	Spirotetramat	30	3000	<LOQ
Etoxazole	30	1500	<LOQ	Spiroxamine	30	100	<LOQ
Fenhexamid	10	3000	<LOQ	Tebuconazole	30	1000	<LOQ
Fenoxycarb	30	100	<LOQ	Thiacloprid	30	100	<LOQ
Fenproprimate	30	2000	<LOQ	Thiamethoxam	30	1000	<LOQ
Fipronil	30	100	<LOQ	Trifloxystrobin	30	3000	<LOQ
Flonicamid	30	2000	<LOQ				

Passed
(LCMS/GCMS)

Residual Solvents - FL (CBD)
Specimen Weight: 117.100 mg

Dilution Factor: 500.000

Analyte	LOQ (ppm)	Action Level (ppm)	Result (ppm)	Analyte	LOQ (ppm)	Action Level (ppm)	Result (ppm)
1,1-Dichloroethane	0.16	8	<LOQ	Hexane	1.17	290	<LOQ
1,2-Dichloroethane	0.04	5	<LOQ	Isopropyl alcohol	0.69	3000	<LOQ
Acetone	2.08	5000	<LOQ	Methanol	0.69	3000	<LOQ
Acetonitrile	1.17	410	<LOQ	Methylene chloride	2.43	600	<LOQ
Benzene	0.02	2	<LOQ	Pentane	2.08	5000	<LOQ
Butanes	2.5	2000	<LOQ	Propane	5.83	2100	<LOQ
Chloroform	0.04	60	<LOQ	Toluene	2.92	890	<LOQ
Ethanol	2.78	5000	<LOQ	Total Xylenes	2.92	2170	<LOQ
Ethyl Acetate	1.11	5000	<LOQ	Trichloroethylene	0.49	80	<LOQ
Ethyl Ether	1.39	5000	<LOQ				
Ethylene Oxide	0.1	5	<LOQ				

Passed
(GCMS)

Pathogenic SAE (qPCR)
Specimen Weight: 275.600 mg

Dilution Factor: 1.000

Analyte	Action Level (cfu/g)	Result (cfu/g)	Analyte	Action Level (cfu/g)	Result (cfu/g)
Salmonella	1	Absence in 1g			
Aspergillus (Flavus, Fumigatus, Niger, Terreus)	1	Absence in 1g			
E. Coli	1	Absence in 1g			

Passed
(qPCR)

Listeria Monocytogenes
Specimen Weight: 978.000 mg

Dilution Factor: 1.000

Analyte	Action Level (cfu/g)	Result
Listeria Monocytogenes	1	Absence in 1g

Passed
(qPCR)

Xueli Gao, Lab Toxicologist; Aihua Sun, Lab Director/Principal Scientist



Definitions and Abbreviations used in this report: *Total CBD = CBD + (CBD-A * 0.877), *Total CBDV = CBDV + (CBDVA * 0.87), *Total THC = THCA-A * 0.877 + Delta 9 THC, *Total THCV = THCV + (THCVA * 0.87), *CBG Total = (CBGA * 0.877) + CBG, *CBN Total = (CBNA * 0.877) + CBN, *Total CBC = CBC + (CBCA * 0.877), *Total THC-O-Acetate = Delta 8 THC-O-Acetate + Delta 9 THC-O-Acetate, *Other Cannabinoids Total = Total Cannabinoids - All the listed cannabinoids on the summary section, *Total Detected Cannabinoids = Delta8-THC + Total CBN + CBT + Delta8-THCV + Total CBG + Total CBD + Total THCV + CBL + Total THC + Total CBDV + Total CBDV + Delta10-THC + Total THC-O-Acetate, *Analyte Details above show the Dry Weight Concentrations unless specified as 12% moisture concentration. (mg/ml) = Milligrams per Milliliter, LOQ = Limit of Quantitation, LOD = Limit of Detection, Dilution = Dilution Factor (ppb) = Parts per Billion, (%) = Percent, (cfu/g) = Colony Forming Unit per Gram (cfu/g) = Colony Forming Unit per Gram, LOD = Limit of Detection, (µg/g) = Microgram per Gram (ppm) = Parts per Million, (ppm) = (µg/g), (aw) = aw (area ratio) = Area Ratio, (mg/Kg) = Milligram per Kilogram, *Measurement of Uncertainty = +/- 10%

This report shall not be reproduced, without written approval, from ACS Laboratory. The results of this report relate only to the material or product analyzed. Test results are confidential unless explicitly waived otherwise. Accredited by a third-party accrediting body as a competent testing laboratory pursuant to ISO/IEC 17025 of the International Organization for Standardization.

Signature:

Email:

Click here to sign

Start

Close

Enter your email address

By clicking continue, I acknowledge that I have read and agree to the Adobe [Terms of Use](#). See our [Privacy Policy](#) for details on our privacy practices.

Continue



1 / 4

Do not submit if you do not trust the requesting party or if you suspect phishing or fraudulent activity

By signing, I agree to this agreement, the [Consumer Disclosure](#) and to do business electronically with Laura McGuffee.