

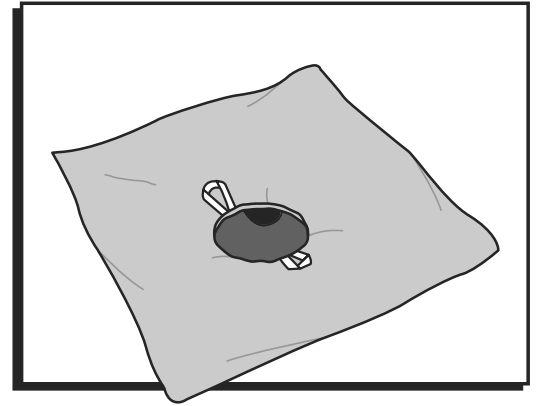
TOOL NEEDED



Utility Knife
(not included)



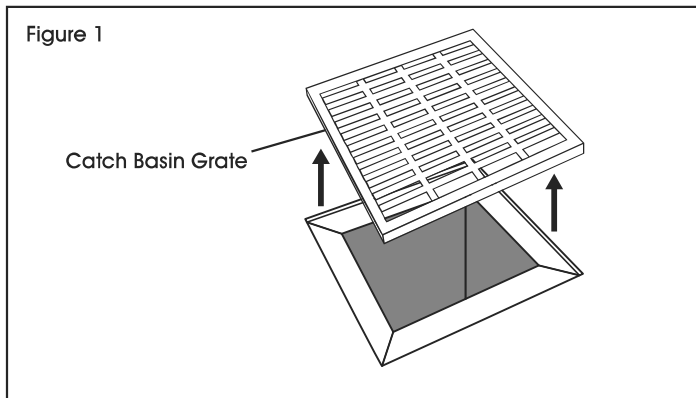
Two Person Assembly
Recommended



INSTALLATION

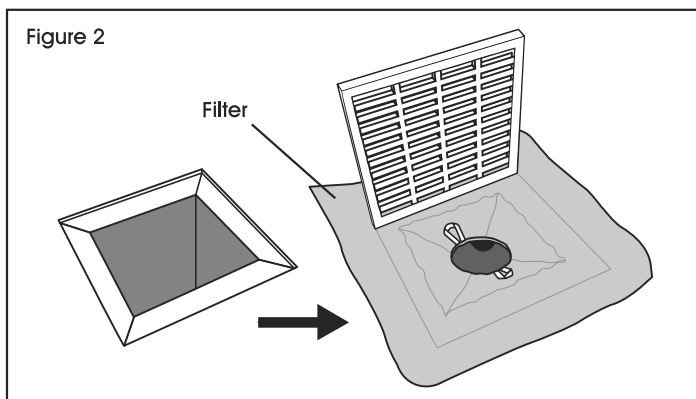
 **NOTE:** This product is compatible with round or square drains.

1. Remove catch basin grate. (See Figure 1)

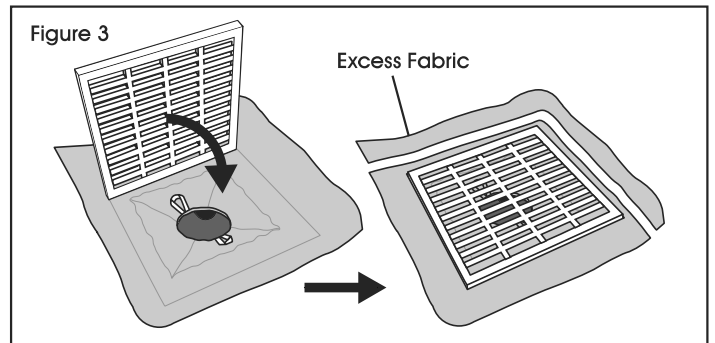


2. Remove dirt and debris from grate and basin edges.
3. Insert filter and place grate on top of one end to hold it in place. (See Figure 2)

 **NOTE:** Leave excess fabric above grate.



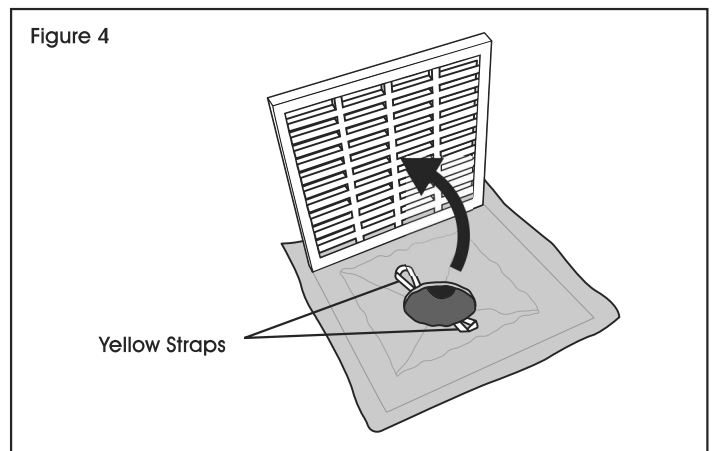
4. Reinstall grate. To ensure maximum effectiveness, fabric of filter should be fully captured between grate and edge of catch basin. (See Figure 3)
5. Use a utility knife to cut excess fabric to desired fit. (See Figure 3)



REMOVAL

1. Lift one end of catch basin grate while keeping other side on ground. (See Figure 4)

 **NOTE:** This keeps storm drain filter from falling into hole.



2. Secure the storm drain filter by holding yellow straps. The catch basin grate can now be fully removed from storm drain filter.
3. Lift and remove storm drain filter using straps.
4. Dispose of contaminated filter according to all local, state and federal regulations.
5. Replace and install new filter.