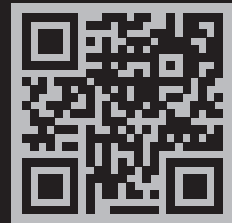


# UWELL

Manufactured by SHENZHEN UWELL TECHNOLOGY CO., LTD.

[www.myuwell.com](http://www.myuwell.com)

©2020 By SHENZHEN UWELL TECHNOLOGY CO., LTD., All Rights Reserved.  
Designed by UWELL Made in china



MYUWELL



MYUWELL



MYUWELL

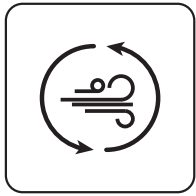


MYUWELLOFFICIAL

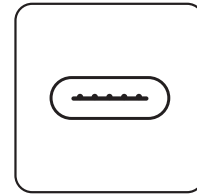


CALIBURN G

CALIBURN G Pod System  
User Manual



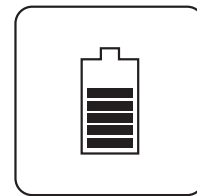
Optional mouth-to-lung and restricted direct-to-lung vape



Type-C port



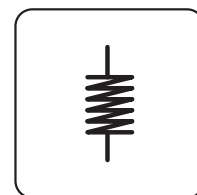
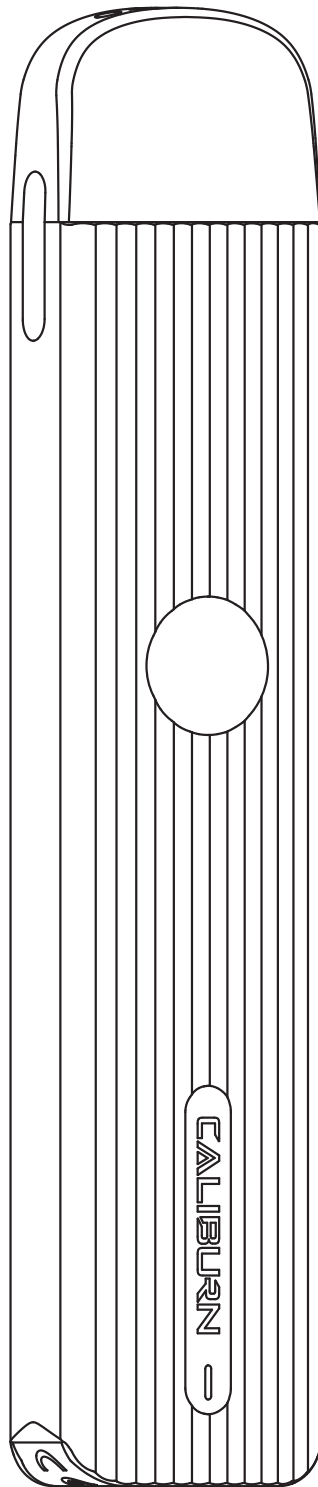
Top filling



690 mAh



Pro-FOCS flavor testing technology



Removable coil

## **Specification**

- Material: PCTG, Aluminum alloy
- Size: 108.3 mm × 22.5 mm × 12.6 mm
- Net Weight: 60 g
- E-liquid Capacity: 2 ml
- Maximum Wattage: 18 W
- Coil Specification:
  - FeCrAl UN2 Meshed-H 0.8 Ω coil
  - FeCrAl 1 Ω coil (Sold separately)
- Battery Capacity: 690 mAh

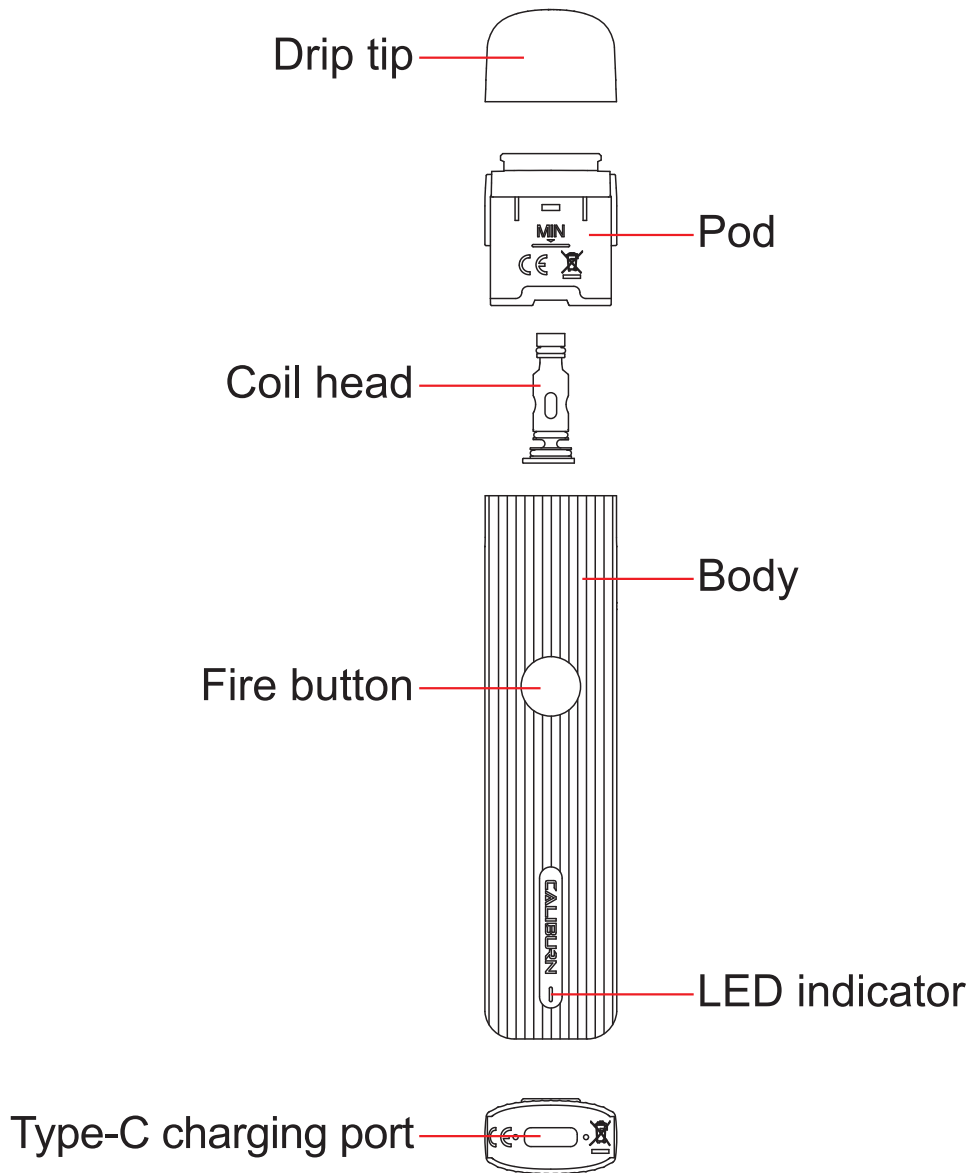
## **The Packaging Includes**

- 1 × CALIBURN G pod system
- 1 × UN2 Meshed-H 0.8 Ω CALIBURN G coil (pre-installed)
- 1 × Spare UN2 Meshed-H 0.8 Ω CALIBURN G coil
- 1 × Type-C charging cable
- 1 × User's manual

## **Features**

1. Take a draw or press the button to vape, two ways to start your vape experience.
2. Quickly press the fire button 5 times to turn it on/off, safe and reliable.
3. Refillable pod and removable coil, cost-effective to use.
4. Top filling method, quick and convenient.
5. The Pro-FOCS flavor testing technology from UWELL gives you an unparalleled vape experience.
6. The chip has multiple circuit protection functions to supply stable, safe, and reliable performance.
7. Simple yet elegant appearance, ergonomic for a more comfortable grip.

## Illustration



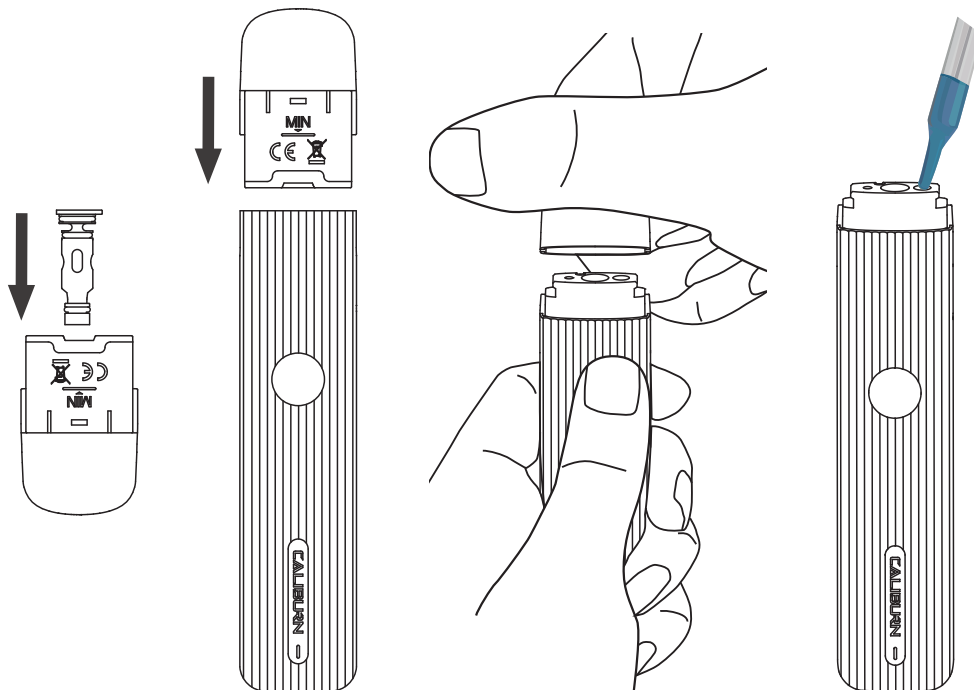
### **Please read the following information before use**

1. Install the pod on the body, and remove the drip tip.
2. After filling e-liquid from the filling hole, put the drip tip back on.  
Prime it for 10 minutes before use.
3. Click the fire button 5 times to turn on the device, take a draw directly or press the fire button to vape.

# Instructions

## 1. How to fill the pod

- a. Install the coil to the pod.
- b. Install the pod on the body.
- c. Remove the drip tip.
- d. Fill the e-liquid.
- e. Put the drip tip back on.



## Attention:

- a. When installing a coil, please make sure the coil aligns with locating slot on the pod.
- b. When filling e-liquid, please fill from the filling hole. Do not drip the e-liquid into the central hole.
- c. Do not leave the drip tip off for an extended period. Install the drip tip securely after filling to prevent leaking.
- d. When using a new coil and then filling the pod, please let the pod sit for 10 minutes to avoid coil burning.
- e. Please add e-liquid when the e-liquid level is at the “MIN” line.

## 2. Power on/off

Quickly click the fire button 5 times in 2 seconds to turn on/off the device, the LED will flash green 3 times.

## 3. Vaping

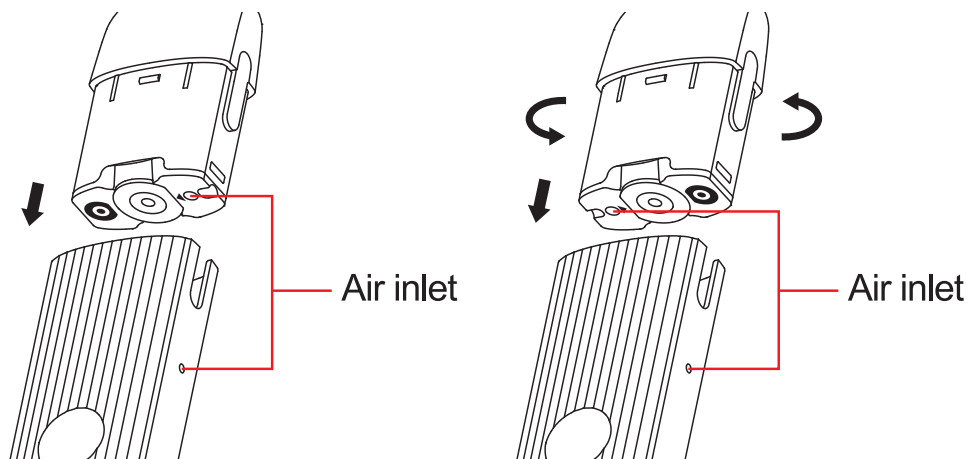
When the device is on, take a draw or press the fire button to vape, the LED will stay on. The device will automatically stop firing when the button is held for longer than 8 seconds then the LED will flash green 5 times.

## 4. Changing the pod

- a. Remove the used pod from the device. Install a new pod.
- b. After filling the new pod, please let the pod sit for 10 minutes to avoid coil burning.

### Attention:

- a. When installing the pod to the device, if the air inlet of the pod and the air inlet of the device are close to each other, the airflow is suitable for a restricted direct-to-lung vape.
- b. When installing the pod to the device, if the air inlet of the pod and the air inlet of the device are far away from each other, the airflow is suitable for a mouth-to-lung vape.



## **5. LED indicator**

During vaping, green light means battery life is more than 60%, blue light means battery life is between 30% and 60%, and red light means battery life is less than 30%. When the red light flashes 10 times in a row, the power is too low, the pod system will automatically shut down.

## **6. Short-circuit protection**

When a short-circuit occurs, press the fire button the LED will flash red 3 times to indicate a short-circuit and stop output.

## **7. Low power indication**

When the device is in low battery, the LED will flash red 10 times to indicate low battery and stop output.

## **8. Over-time protection**

After 8 seconds of vaping, the green light flashes 5 times to indicate the timeout, and automatically stops the output.

## **9. Open-circuit Indication**

When there is an open-circuit on the pod or there is no pod connected to the body, the LED will flash blue 3 times and stop delivering power.

## **10. Charging**

When charging the device with a type-C charging cable, the indicator light flashes slowly to indicate that the product is charging. It will flash red to indicate low battery, flash blue to indicate medium power, flash green to indicate sufficient power, and the green light stays on after charging is completed.



## **Attention**

1. Please charge with certified high-quality adaptor from a reputable company and a USB cable with the charging current of 5V/2A.
2. The device and adaptor may warm up when charging, keep away from flammable and explosive goods.
3. Please use a dry and soft cloth to clean the device. Keep away from water or any liquids.
4. Please remove the pod cartridge and store it separately when you are on a plane to avoid leakage due to pressure changes.
5. Please do not put the device in your pocket with other hard objects to avoid damages.
6. Please turn off the device when it is not in use.
7. Please charge the device at least once a month.
8. Don't disassemble the device.
9. Avoid high temperature, low temperature and humidity during use or storage to avoid damage to the equipment.
10. The product parameters or pictures in this manual are for illustration purpose only, please refer to the actual product.

## **Safety Instruction**

Please read the following safety instructions carefully before using the product.

1. This product is only available to people who have reached the legal age of smoking. It is strictly forbidden for young children, pregnant women and women during breastfeeding or for patients with heart disease, high blood pressure, diabetes, depression and asthma.
2. Please put the product out of reach of children and pets to avoid injury.
3. When using this product, please keep away from inflammable and explosive materials to avoid injury.
4. The company does not assume any responsibility for any equipment damage or personal injury caused by user misuse.

## **Warranty Details**

Please keep the anti-counterfeit code and proof of purchase after purchasing the product. The warranty period is 180 days from the date of purchase. Our company provides warranty service (Device and atomizer only, exclude coil head and pod cartridge).

Please note that any of the following conditions are not covered by the warranty:

1. Exceeding the warranty period.
2. Damage caused by the use, maintenance, and storage that is not in accordance with the requirements as instructed.
3. Damage caused by unauthorized repair.
4. Damage caused by the usage of non-UWELL components.
5. Damage caused by force majeure.

## **Verification**

1. Visit the UWELL official website [www.myuwell.com](http://www.myuwell.com) through a smartphone or PC.
2. Please enter the 16 digits authentic code, and the result will be displayed in a few seconds.
3. Please feel free to contact UWELL via e-mail, phone or website for more help.

## **Customer Service**

We pride ourselves on manufacturing quality products and providing excellent customer service. For any issues, please contact us at [service@myuwell.com](mailto:service@myuwell.com).

\* UWELL reserves the right of final interpretation in the user manual.

\* It is hereby stated that the markable area on the product is not enough to mark the CE and WEEE as the standard dimensions.