

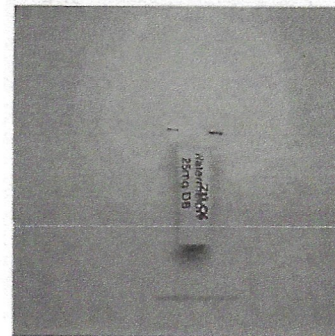


Customer:

Customer Sample ID: 25mg Watermelon #201026NJMMW

Laboratory Number: 20K0218-06

Servings per Container: 4.6976



Cannabinoid Profile

Extraction Technician: DF

Analytical Chemist: CB

Extraction
Date(s)

11/11/2020

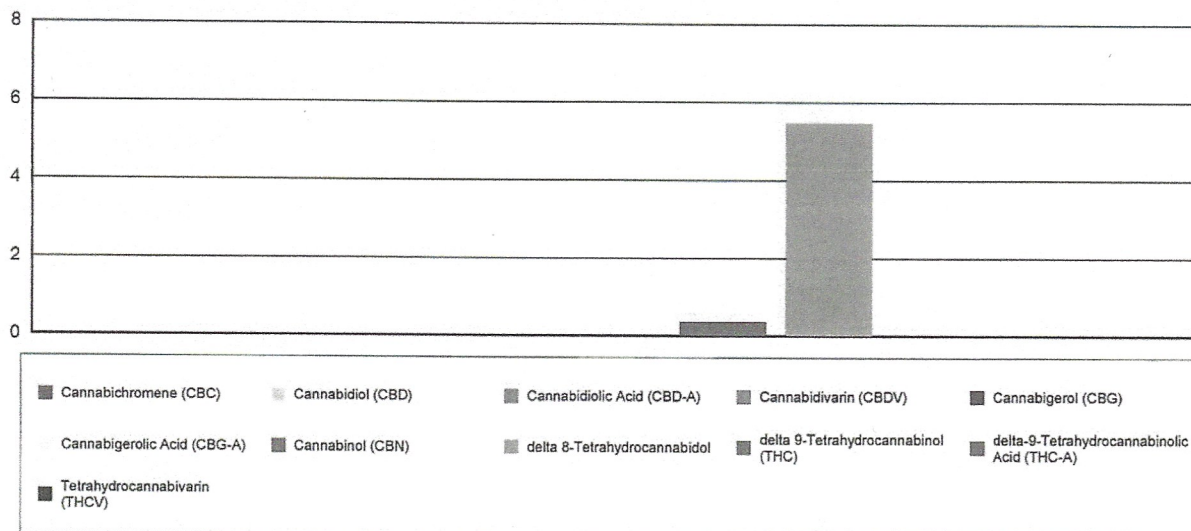
Analysis
Date(s)

11/11/2020

Cannabinoids (HPLC)		Results		
	LOD (mg/g)	%	mg/g	mg/gummy
Cannabidiol (CBD)	<0.006			
Cannabidiol Acid (CBD-A)	<0.006			
Cannabigerol (CBG)	<0.006			
Cannabigerol Acid (CBG-A)	<0.006			
Cannabidiol (CBD)	<0.006			
Tetrahydrocannabivarin (THCV)	<0.006			
Cannabinol (CBN)		0.04	0.368	1.73
delta 9-Tetrahydrocannabinol (THC)	<0.006			
delta 8-Tetrahydrocannabinol		0.55	5.46	25.6
Cannabichromene (CBC)	<0.006			
delta-9-Tetrahydrocannabinolic Acid (THC-A)	<0.006			
Cannabinoids Total		%	mg/g	
Max Active THC		0.00	0.00	
Max Active CBD		0.00	0.00	
T.Active Cannabinoids		0.04	0.37	
Total Cannabinoids		0.58	5.83	

Following USDA guidelines on uncertainty, Altitude Consulting's uncertainty are calculated for CBDa and CBD at +/- 4%. The uncertainty for THCa and THC are +/- 5%. This implies the range for a 10% value of CBD to be 9.6-10.4%. The uncertainty range for a 0.30% value of THC would be 0.28-0.32%. The measurement uncertainty is calculated using a coverage factor of 2.

Cannabinoid (mg/g)



Reporting Limits will vary based on sample extraction weight used for the analysis.

Altitude Consulting, LLC utilizes NIST traceable Reference Standards and Certified Reference Material to calibrate analytical instruments along with proven analytical methods. The methods are applied in the most ethical manner following good laboratory practice guidelines. The results of this report are based solely on the sample submitted and cannot be reproduced.