

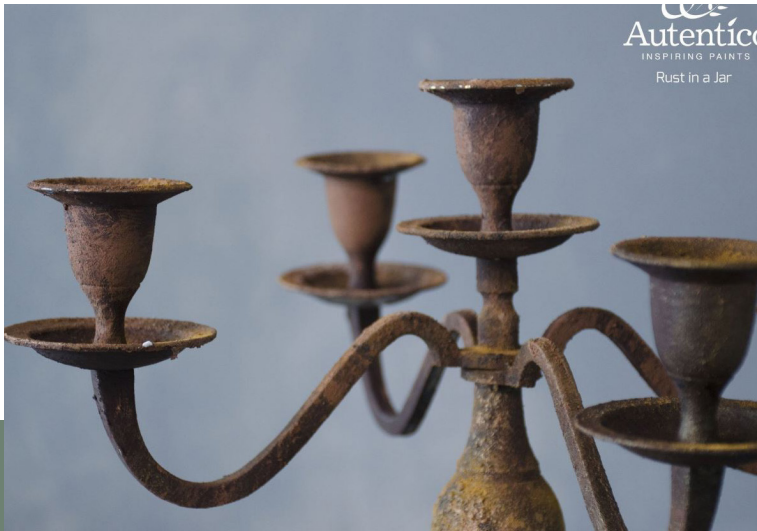


Autentico®

INSPIRING PAINTS

RUST IN A JAR

Autentico **RUST IN A JAR** is a part of the creative powder range



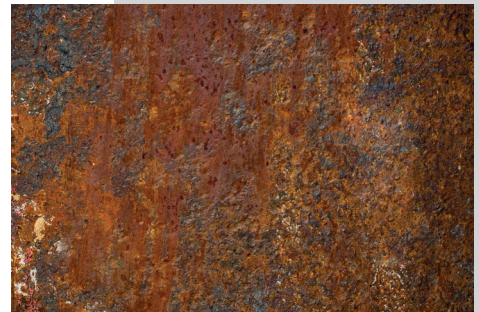
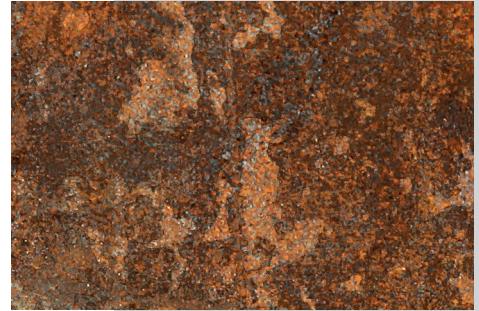
It consists of three highly pigmented powders to create truly stunning rust effects on walls, furniture, lamp bases, candle holders, without the need of using dangerous corrosive ingredients.

RUST IN A JAR can be used on walls or on furniture, lamp bases and such items.

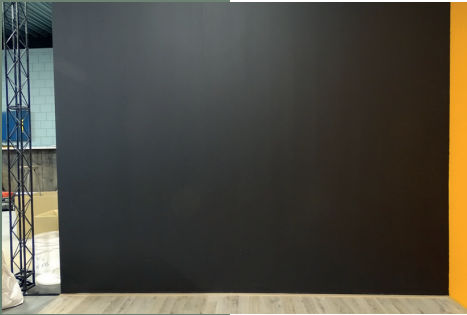
The look

Rust is a natural oxidation process that creates irregular patches of yellow/ orange/red hues with highs and lows. You can often see through layers of rust revealing the original and/or aged colour of the wall.

Two images of real rust. Look carefully how the patches are formed. The original colour black in the back, followed by the golden rust patches (the older the lighter). Then followed by the reds/orange patches. On top of this the images show dark rust covering parts of the golden and red rust patches.



To create the illusion on walls, start by painting the subsurface



*Wall painted with
Autentico Vintage,
colour Nocturnal*



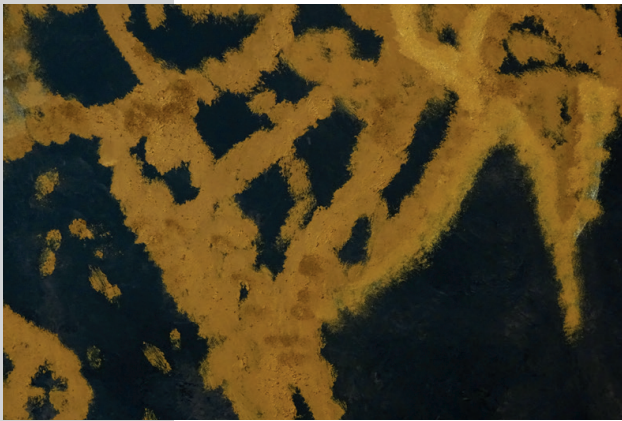
*Mottled effect with
patches of Nocturnal
and Dark Rust*

Make sure the suction of the walls is even. In case of doubt apply a coat of **UNDERCOAT** first.

Paint the subsurface using Autentico Vintage, colour Nocturnal. Vintage is a porous paint and is ideal as a base for rust effects.

While the paint is still wet, paint patches with Vintage, colour Dark Rust. Make smudges to create a mottled effect showing patches of black and lighter hues, just like a beginning oxidation process would do. Let the coats dry before continuing.

Next step is to create the first oxidation layer



*Patches of **GOLDEN RUST** applied
with a paste of **GOLDEN RUST***

In the illusion of rust, this is the oldest layer.

Mix 1 part of **GOLDEN RUST** power with 1 part of Autentico **RUST BASE**.

The result is a thick, grainy paste.

Apply by brush in an irregular pattern. While the paste is still wet, apply dry powder of **GOLDEN RUST** in the patches of **GOLDEN RUST** paste to create highlights.

Let dry to avoid smudges with the next layers.

Next step is to create the second oxidation layer



*Patches of RED RUST applied
with a paste of RED RUST*

In the illusion of rust, this
is the next layer.

Mix 1 part of **RED RUST**
powder with 1 part of
Autentico **RUST BASE**.

The result is a thick and
grainy paste.

Apply by brush in an irregular
pattern on top and overlapping
the patches of **GOLDEN RUST**.

Only cover parts of the prior layer
of **GOLDEN RUST**.

While the paste is still wet, apply
dry powder of **RED RUST** in the
patches of **RED RUST** paste.

Let dry to avoid smutches with
the last layer.

Next step is to create the third oxidation layer



*Patches of **DARK RUST** applied
with a paste of **DARK RUST***

In the illusion of rust, this is the last layer.

Mix 1 part of **DARK RUST** powder with 1 part of Autentico **RUST BASE**.

The result is a thick and grainy paste.

Apply by brush in an irregular pattern on top and overlapping the other patches.

Only cover parts of the prior layers. While the paste is still wet, apply dry powder of **DARK RUST** in the patches of **DARK RUST** paste.

Let dry and enjoy your work.

Finish and protection

RUST IN A JAR on a wall doesn't need additional protection unless applied in high traffic areas.

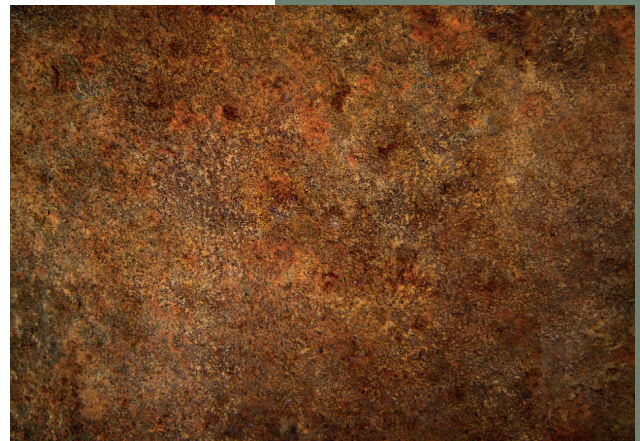
In these cases we recommend protection with either Autentico **SEALER** or Autentico **FLOOR VARNISH**.

Autentico **SEALER** will penetrate the surface making your work water repellent but slightly darker.

Autentico **FLOOR VARNISH** creates an extra film on top of your work. It will be protected against wear and tear.

Be aware applying **FLOOR VARNISH** too thick might result in white patches on your work.

We recommend diluting the first coat with 25% water and the second coat with 10%.



*Final result of
"RUST IN A JAR"
application on a wall*

Creating the illusion on furniture and accessories

Because of the smaller surfaces, it's even easier to apply **RUST IN A JAR** to furniture and accessories.

Unlike creating the illusion on walls, there is no need to make a past and the dry powder can be applied straight on to the wet paint.

Below a guide on how to apply **RUST IN A JAR** on a lamp.



*Cover lamp base
with a coat of
Vintage Nocturnal*



*Paint patches of
Vintage, colour
Dark Rust*

(continued...)



*Press RUST IN A
JAR POWDERS
in wet paint*



*Mix RUST IN A
JAR POWDERS
for a perfect illusion.*

*Leave GOLD
RUST in the
background,
followed by RED
and DARK*



*Dabble with a
cotton cloth*



*Leave to dry for
several hours*



*Some patches might dry
lighter depending on subsurface*



*Apply Autentico BLACK WAX
to make result darker*



RUST IN A JAR

autentico-paint.co.uk
23 Moorside Business Park Colchester CO1 2ZF
01206 618920
hello@autentico-paint.co.uk