

Mystical Kingdom

Castle Wall Quilt by Cyndi Hershey



Quilt size: approximately 62" x 76"

Featuring fabrics from
Mystical Kingdom by P&B Textiles



P&B Textiles • pbtex.com • 800-351-9087 • 208 Clock Tower Square, Portsmouth, RI 02871

Mystical Kingdom

Fabric Collection by P&B Textiles

Castle Walls Quilt designed by Cyndi Hershey

Skill Level: Confident Beginner • Finished Quilt Size: approx. 62" x 76"

Yardages:

Fabric A:	MKIN 5281 MU	3/4 yard (allow for extra if fussy cutting)
Fabric B:	MKIN 5282 WP	1 1/4 yards
Fabric C:	MKIN 5284 W	1 1/4 yards
Fabric D:	MKIN 5286 WT	1/2 yard
Fabric E:	MKIN 5289 P	3/4 yard
Fabric F:	MKIN 5289 T	1 1/8 yards
Fabric G:	RA13 4881 W	1 3/4 yards
Backing:	MKIN 5281 MU	4 3/4 yards
Batting:	70" x 84"

Cutting Instructions:

Please read all instructions carefully before beginning. Strips are cut across the width of fabric (perpendicular to selvages) unless otherwise stated. All seams are sewn with a 1/4" seam unless otherwise stated. Label all pieces.

From Fabric A:

1. Cut twelve 6 1/2" squares centering design within each one as desired. (Blocks)

From Fabric B:

1. Cut seven 5" strips. Sew strips together end to end with diagonal seams. Trim seams to 1/4" and press open. From this pieced strip, cut two 5" x 53 1/2" strips and two 5" x 67 1/2" strips. (Outer Border)

From Fabric C:

1. Cut six 1 1/2" strips. Sew strips together end to end with diagonal seams. Trim seams to 1/4" and press open. From this pieced strip, cut two 1 1/2" x 50 1/2" strips and two 1 1/2" x 62 1/2" strips. (3rd Border)
2. Cut four 3 1/2" strips. (Strip Set #3 – Sashing)
3. Cut three 4" strips; subcut twenty-four 4" squares. (Blocks)

From Fabric D:

1. Cut five 2" strips. (Strip Set #2 – Blocks)
2. Cut two 2" strips; subcut twenty-four 2" squares. (Border Blocks)

From Fabric E:

1. Cut ten 2" strips. (Strip Sets #1 & #2 – Blocks)

From Fabric F:

1. Cut twelve 1" strips. Sew strips together end to end with diagonal seams. Trim seams to 1/4" and press open. From this pieced strip, cut two 1" x 48 1/2" strips and two 1" x 61 1/2" strips. (2nd Border) From the remaining pieced strip, cut two 1" x 53 1/2" strips and two 1" x 66 1/2" strips. (5th Border)
2. Cut two 2 1/2" strips; subcut twenty 2 1/2" squares. (Sashing Squares) Use the remainder of the strip to cut twelve 2" squares. (Border Blocks)
3. Cut eight 2 1/2" strips. (Binding)

From Fabric G:

1. Cut six 1 1/2" strips. Sew strips together end to end with diagonal seams. Trim seams to 1/4" and press open. From this pieced strip, cut two 1 1/2" x 52 1/2" strips and two 1 1/2" x 64 1/2" strips. (4th Border)
2. Cut five 2" strips. (Strip Set #1 – Blocks)
3. Cut six 2" strips. Sew strips together end to end with diagonal seams. Trim seams to 1/4" and press open. From this pieced strip, cut two 2" x 47 1/2" strips and two 2" x 58 1/2" strips. (1st Border)
4. Cut three 4" strips; subcut twenty-four 4" squares. (Blocks)
5. Cut two 6 1/2" strips. (Strip Set #3 – Sashing)

Piecing Instructions:

Blocks

1. Strip Set #1: Sew one 2" E strip to one 2" G strip along the long sides. Press toward E. Repeat to make five sets.
2. Cut the SS#1 sets into ninety-six 2" segments. (Figure 1)



Figure 1

Make 96. 2" x 3 1/2" unfinished.

3. Strip Set #2: Sew one 2" D strip to one 2" E strip along the long sides. Press toward E. Repeat to make five sets.
4. Cut the SS#2 sets into ninety-six 2" segments. (Figure 2)



Figure 2

Make 96. 2" x 3 1/2" unfinished.

5. Sew one SS#1 segment with one SS#2 segment to create one four-patch unit; press. Repeat to make ninety-six units. (Figure 3)



Figure 3

Make 96. 3 1/2" x 3 1/2" unfinished.

6. Draw a diagonal line on the back side of each 4" G square. With right sides together, place one marked square against one 4" C square. Sew 1/4" to each side of the line. Cut apart on the line to create two half-square-triangle units. Press toward C. Repeat to make forty-eight HST units. (Figure 4)



Figure 4

Make 48. 3 1/2" x 3 1/2" unfinished.

7. Sew two four-patch units from Step 5 with two HST units from Step 6, as shown, to create one block row; press. Repeat to make twenty-four rows. (Figure 5)

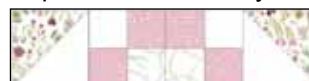


Figure 5

Make 24. 3 1/2" x 12 1/2" unfinished.

8. Sew two four-patch units from Step 5 together, as shown; press. Repeat to make twenty-four units. (Figure 6)



Figure 6 **Make 24.**
3 1/2" x 6 1/2" unfinished.

9. Sew one unit from Step 8 to both sides of one 6 1/2" A square; press. Repeat to make twelve rows. (Figure 7)



Figure 7 **Make 12.**
6 1/2" x 12 1/2" unfinished.

10. Sew one row from Step 7 to the top and bottom of the row from Step 9; press. Repeat to complete twelve blocks. (Figure 8)



Figure 8 **Make 12.**
12 1/2" x 12 1/2" unfinished.

Sashing

- Strip Set #3: Sew one 3 1/2" C strip to both sides of one 6 1/2" G strip along the long sides. Press toward C. Repeat to make two strip sets.
- Cut SS#3 sets into thirty-one 2 1/2" segments. (Figure 9)



Figure 9 **Make 12.**
2 1/2" x 12 1/2" unfinished.

Border Blocks

- Sew three 2" F squares with six 2" D squares, as shown; press. Repeat to make four nine-patch blocks. (Figure 10)

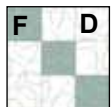


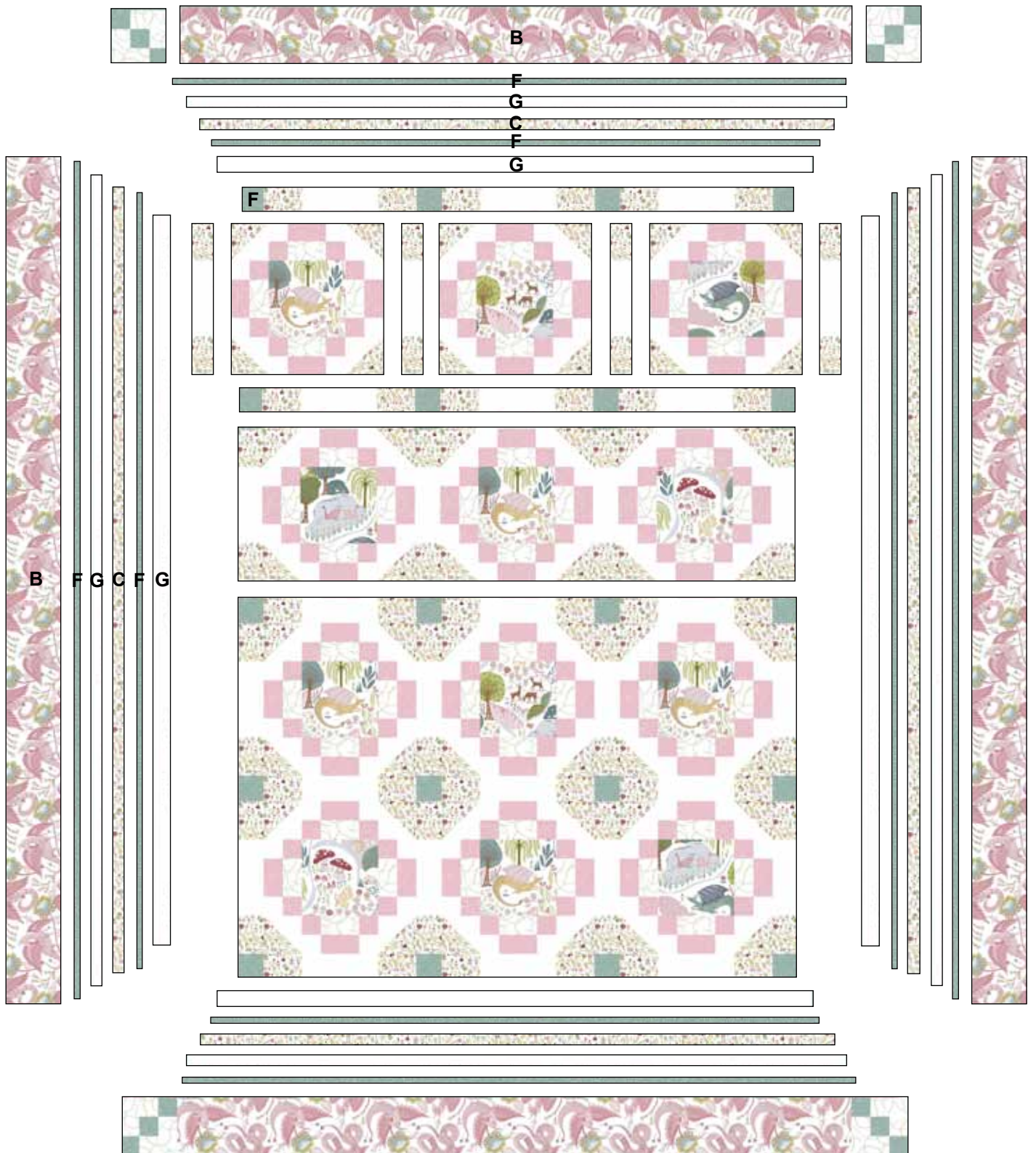
Figure 10 **Make 3.**
5" x 5" unfinished.

Quilt Assembly: Refer to Quilt Diagram

- Sew three sashing units alternately with four 2 1/2" F squares. Press toward the sashing units. Repeat to make five horizontal sashing rows.
- Referring to Quilt Diagram, sew three blocks alternately with four sashing units. Press toward the sashing units. Repeat to make four block rows.
- Sew five sashing rows alternately with four block rows to complete Quilt Center; press.
- Sew one 2" x 58 1/2" G strip to both sides of the Quilt Center; press. Sew one 2" x 47 1/2" G strip to the top and bottom of the Quilt Center; press.
- Sew one 1" x 61 1/2" F strip to both sides of the Quilt Center; press. Sew one 1" x 48 1/2" F strip to the top and bottom of the Quilt Center; press.
- Sew one 1 1/2" x 62 1/2" C strip to both sides of the Quilt Center; press. Sew one 1 1/2" x 50 1/2" C strip to the top and bottom of the Quilt Center; press.
- Sew one 1 1/2" x 64 1/2" G strip to both sides of the Quilt Center; press. Sew one 1 1/2" x 52 1/2" G strip to the top and bottom of the Quilt Center; press.
- Sew one 1" x 66 1/2" F strip to both sides of the Quilt Center; press. Referring to the Quilt Diagram sew one 1" x 53 1/2" F strip to the top and bottom of the Quilt Center; press.
- Sew one 5" x 67 1/2" B strip to both sides of the Quilt Center; press. Sew one nine-patch block to both ends of each 5" x 53 1/2" B strip; press. Sew these pieced borders to the top and bottom of the Quilt Center; press.

Finishing:

- Prepare backing using two widths of fabric with vertical seam/s. Press seams open and trim to 70" x 84".
- Layer quilt, batting, and backing. Baste layers together.
- Quilt as desired.
- Trim layers even with quilt top squaring corners.
- Join eight 2 1/2" F binding strips with diagonal seams. Press seams open. Attach binding using your favorite method.
- Make a label and sew to the back of quilt.



Quilt Diagram

Mystical Kingdom

Fabric Collection by P&B Textiles



MKIN 5281 MU*†



MKIN 5282 T



MKIN 5282 WP*



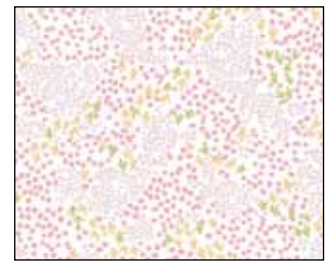
MKIN 5283 DT



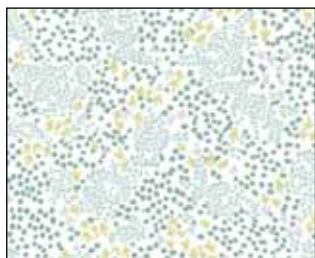
MKIN 5283 P



MKIN 5284 W*



MKIN 5285 WP



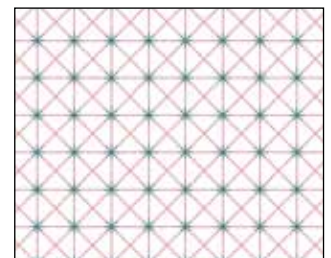
MKIN 5285 WT



MKIN 5286 WP



MKIN 5286 WT*



MKIN 5287 PT



MKIN 5288 MU



MKIN 5289 DP



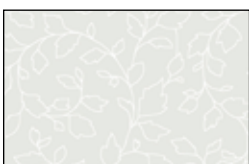
MKIN 5289 DT



MKIN 5289 P*



MKIN 5289 T*



RA13 4881 W*

