

Mystical Kingdom

Mystic Isle Quilt by Stacey Day



Quilt size: approximately 76 3/4" x 89 1/2"

Featuring fabrics from
Mystical Kingdom by P&B Textiles



P&B Textiles • pbtex.com • 800-351-9087 • 208 Clock Tower Square, Portsmouth, RI 02871

Mystical Kingdom

Fabric Collection by P&B Textiles

Mystic Isle Quilt designed by Stacey Day

Skill Level: Intermediate • Finished Quilt Size: approx. 76 3/4" x 89 1/2"

Yardages:

Fabric A:	MKIN 5281 MU	2 5/8 yards
Fabric B:	MKIN 5282 T	7/8 yard
Fabric C:	MKIN 5282 WP	1 1/4 yards
Fabric D:	MKIN 5283 P	7/8 yard
Fabric E:	MKIN 5285 WP	1 3/8 yards
Fabric F:	MKIN 5286 WT	1 1/4 yards
Fabric G:	MKIN 5289 T	2/3 yard
Fabric H:	MKIN 5289 DT	2/3 yard
Backing:	MKIN 5281 MU suggested	5 1/2 yards
Batting:		85" x 98"

Additional supplies: template plastic

Cutting Instructions:

Please read all instructions carefully before beginning. Strips are cut across the width of fabric (perpendicular to selvages) unless otherwise stated. All seams are sewn with a 1/4" seam unless otherwise stated. Label all pieces.

From Fabric A:

1. Cut three 9 1/2" strips; subcut 10 Template 1, two Template 2 and three Template 2A.
2. Cut two 5 1/4" strips; subcut two Template 2D, two Template 2C, one Template 3C and one Template 3D.
3. Cut nine 5" strips; sew together end to end and cut two 5" x 81" strips and two 56" x 77 1/4" strips.

From Fabric B:

1. Cut seven 3 1/2" strips; subcut fifteen 3 1/2" x 9 1/2" rectangles and thirty 3 1/2" squares.

From Fabric C:

1. Cut three 9 1/2" strips; subcut 10 Template 1, three Template 2 and two Template 2A.
2. Cut two 5 1/4" strips; subcut two Template 2D, two Template 2C, one Template 3A and one Template 3B.

From Fabric D:

1. Cut seven 3 1/2" strips; subcut fifteen 3 1/2" x 9 1/2" rectangles and thirty 3 1/2" squares.

From Fabric E:

1. Cut nine 3 7/8" strips; subcut forty-nine 3 7/8" squares. Cut squares once on the diagonal to make ninety-eight triangles.
2. Cut two 3" strips; subcut twenty-two 3" squares. Cut squares once on the diagonal to make forty-four triangles.

From Fabric F:

1. Cut eleven 3 1/2" strips; subcut (120) 3 1/2" squares.

From Fabric G:

1. Cut eight 2 1/2" strips; sew together end to end and cut two 2 1/2" x 68 1/4" strips, and two 2 1/2" x 77" strips.

From Fabric H:

1. Cut nine 2 1/4" strips for binding.

Piecing Instructions:

1. Pin four 3 7/8" E triangles to the top, bottom, and sides of the A and C Template 1 pieces, matching centers. Sew the triangles to the squares, and press towards the triangles. Trim and square to 9 1/2" x 9 1/2". (Figure 1)

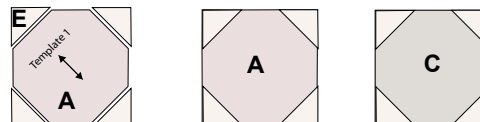


Figure 1 Make 10 of each. 9 1/2" x 9 1/2" unfinished.

2. Sew a pair of 3 1/2" F squares to either side of each B and D 3 1/2" square. Press towards Fabric B/D to make Unit A.
3. Sew a pair of A Units to either side of the 3 1/2" x 9 1/2" B rectangles to make a B Block. Make fifteen. Repeat with the D units and rectangles to make fifteen Block D. (Figure 2)

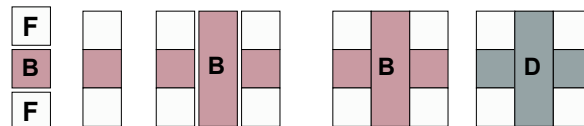


Figure 2 Make 15 of each. 9 1/2" x 9 1/2" unfinished.

4. Sew one 3 7/8" E triangle to the long edge of the A and C Template 2 pieces, matching centers. Sew a pair of 3" E triangles to the sides as shown. Press towards E. The finished straight grain sides will measure 9 1/2". (Figure 3)

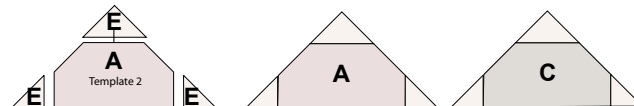


Figure 3 Make 9 of each side triangle.

5. Sew a pair of 3" E triangles to the short sides of the A and C Template 3 pieces as shown to make the corner blocks. Make two of each. (Figure 4)

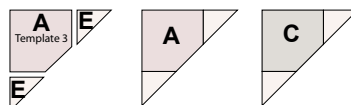


Figure 4 Make 2 of each corner block.

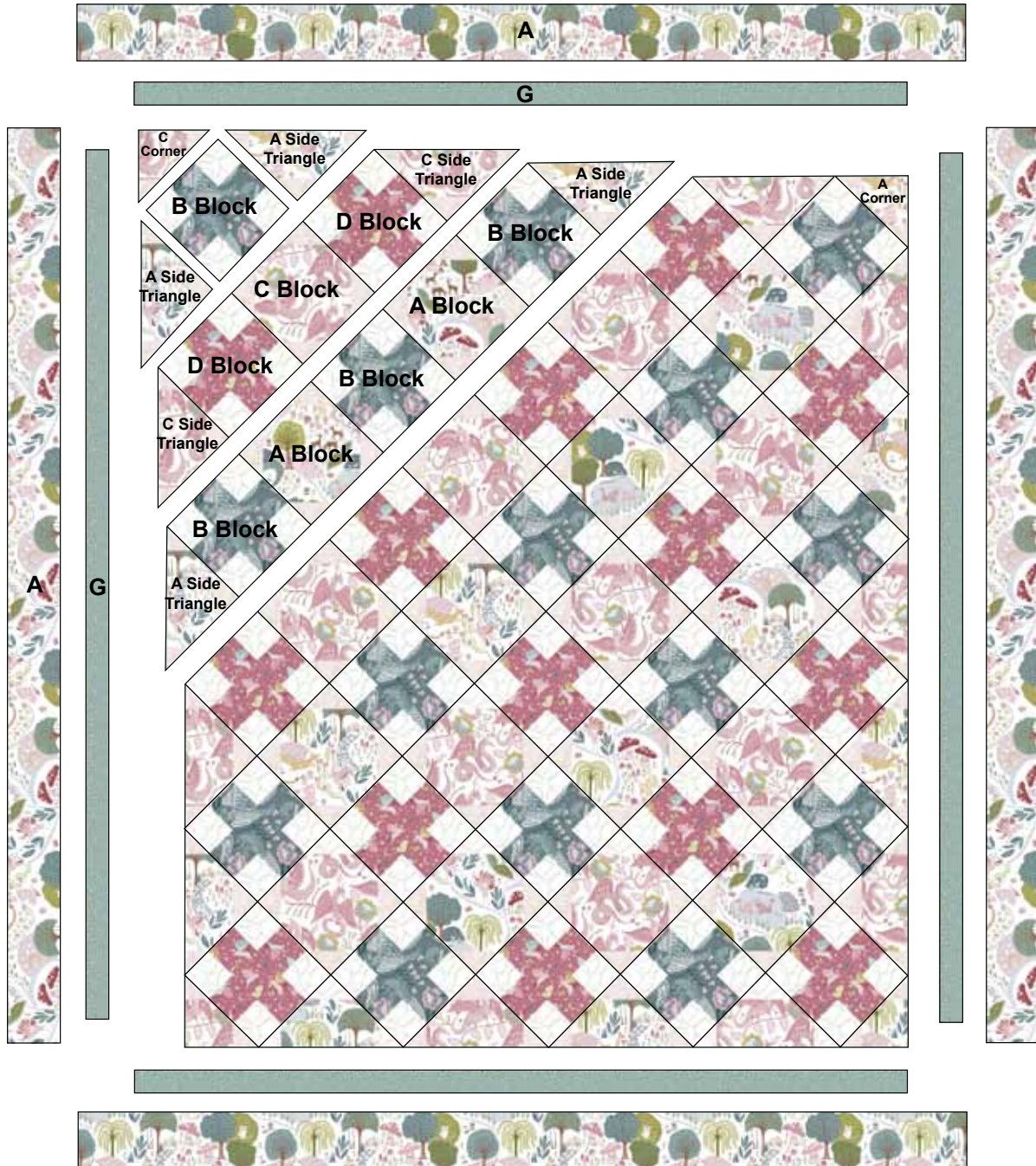
6. Sew the A Blocks, B blocks, corner blocks and side triangle blocks together as shown into diagonal rows. The A and B blocks/triangles will be in the same rows, and the C and D blocks/triangles will be in the same rows. Press towards the A blocks/triangles in each row. (Quilt Diagram)
7. Sew one 2 1/2" x 77" G strip to the opposite sides of the quilt top, matching ends and centers. Sew one 2 1/2" x 68 1/4" G strip to the top and bottom, matching centers and ends. Press towards G. (Quilt Diagram)

9. Sew one 5" x 81" A strip to opposite sides of the quilt.
 Press towards A. Sew one 5" x 77 1/2" A strip to the top
 and bottom. Press towards A. (Quilt Diagram)

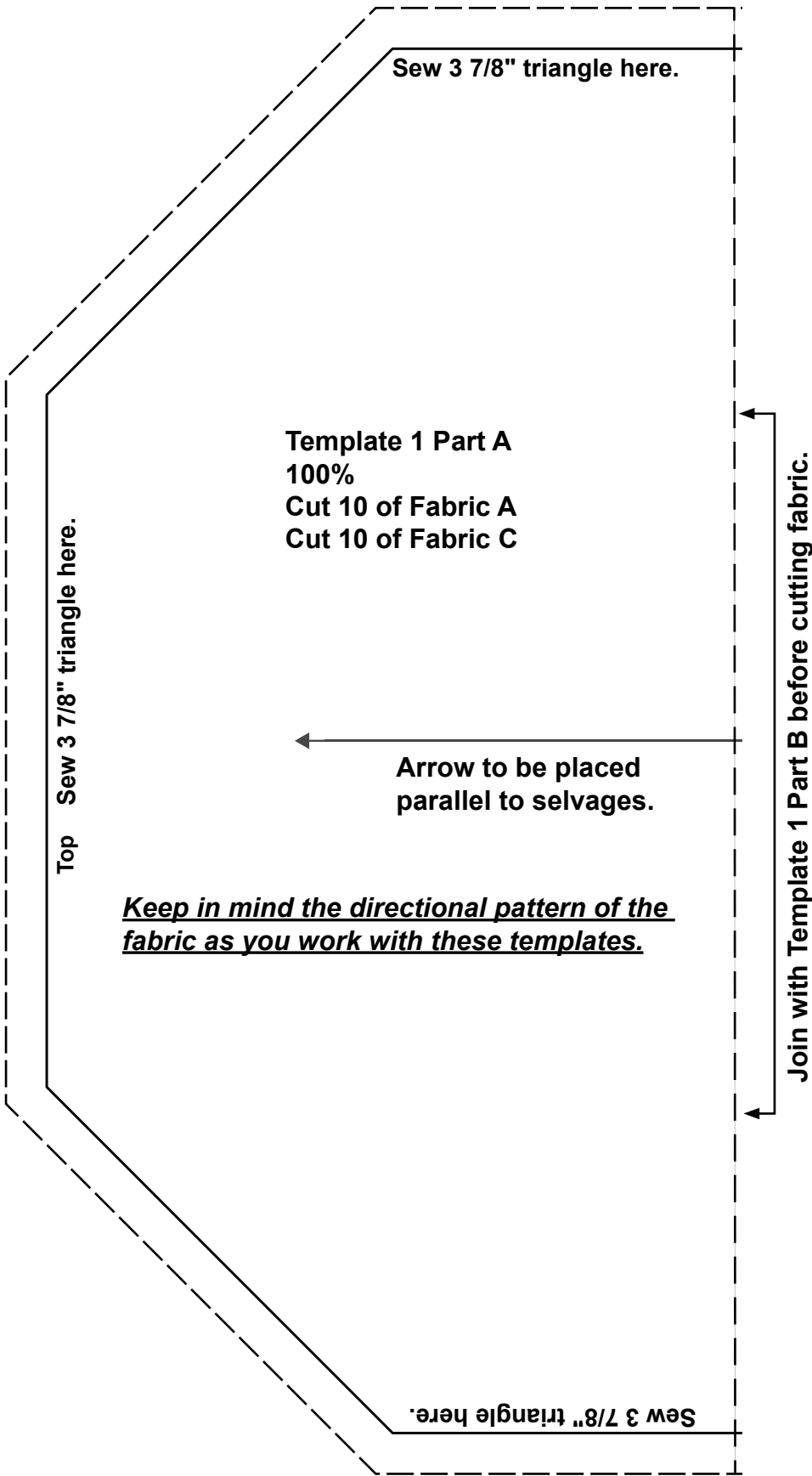
2. Layer quilt, batting, and backing. Baste layers together.
3. Quilt as desired.
4. Trim layers even with quilt top squaring corners.
5. Join nine 2 1/2" H binding strips with diagonal seams.
 Press seams open. Attach binding using your favorite
 method.
6. Make a label and sew to the back of quilt.

Finishing:

1. Prepare backing using two widths of fabric with vertical
 seam/s. Press seams open and trim to 85" x 98".

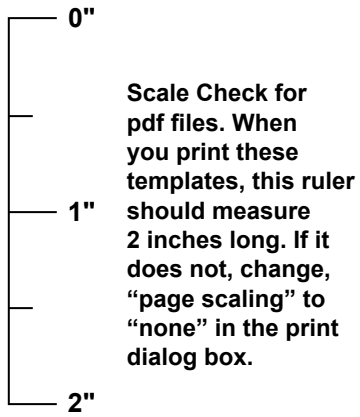


Quilt Diagram



NOTE: A and C Fabrics are directional. Templates indicate specific information based on placement of piece within the quilt.

Keep in mind the directional pattern of the fabric as you work with these templates.



Sew 3 7/8" triangle here.

**NOTE: A and C Fabrics are directional.
Templates indicate specific
information based on placement
of piece within the quilt.**

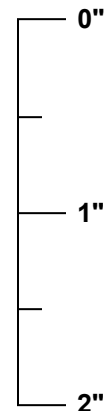
**Template 1 Part B
100%
Cut 10 of Fabric A
Cut 10 of Fabric C**

Join with Template 1 Part A before cutting fabric.

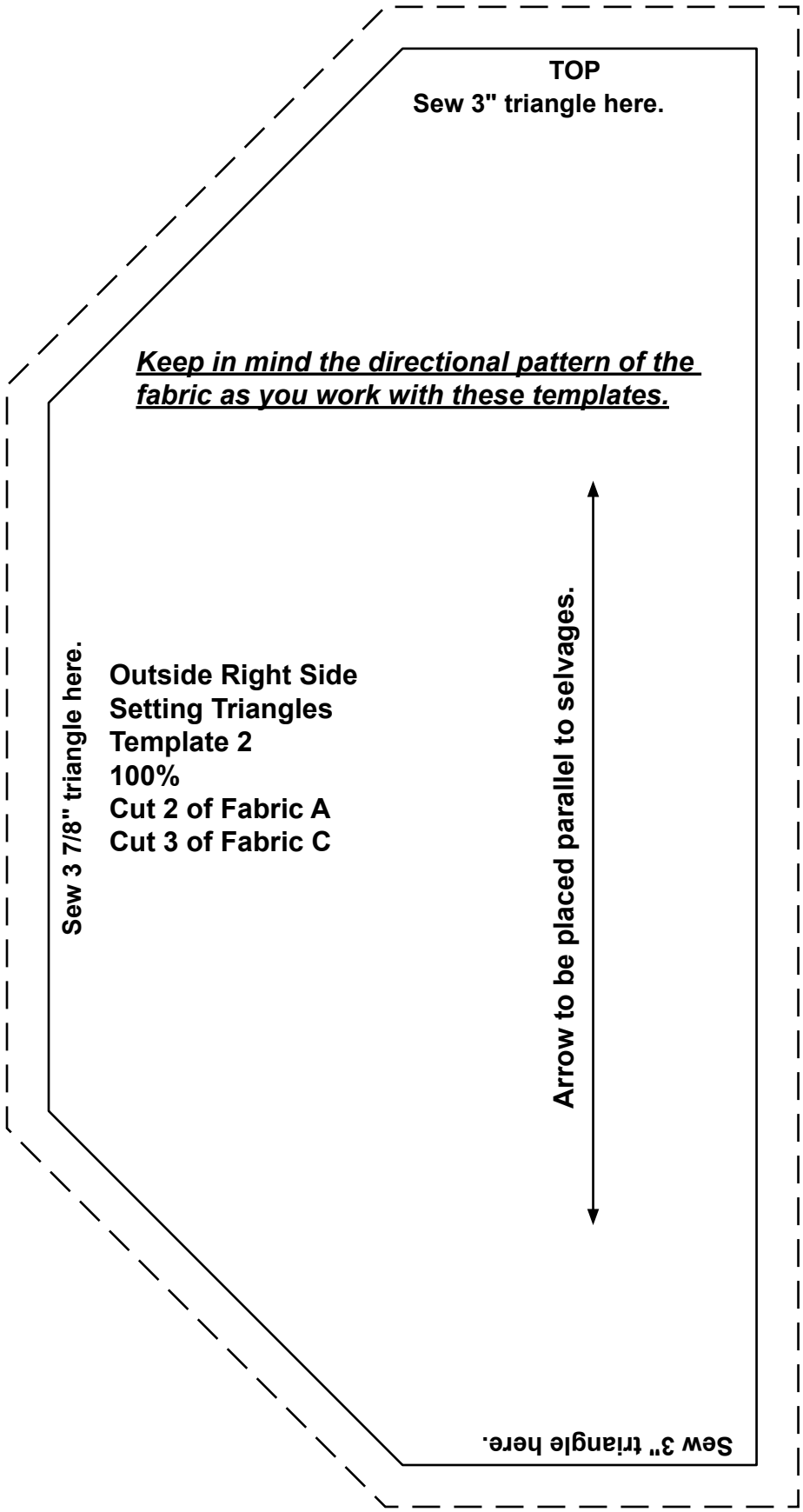
Arrow to be placed
parallel to selvages.

Sew 3 7/8" triangle here.

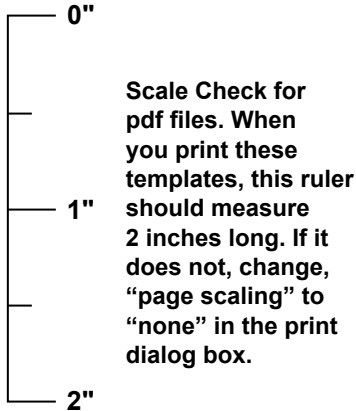
Sew 3 7/8" triangle here.



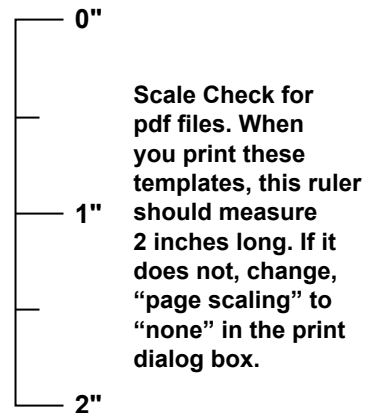
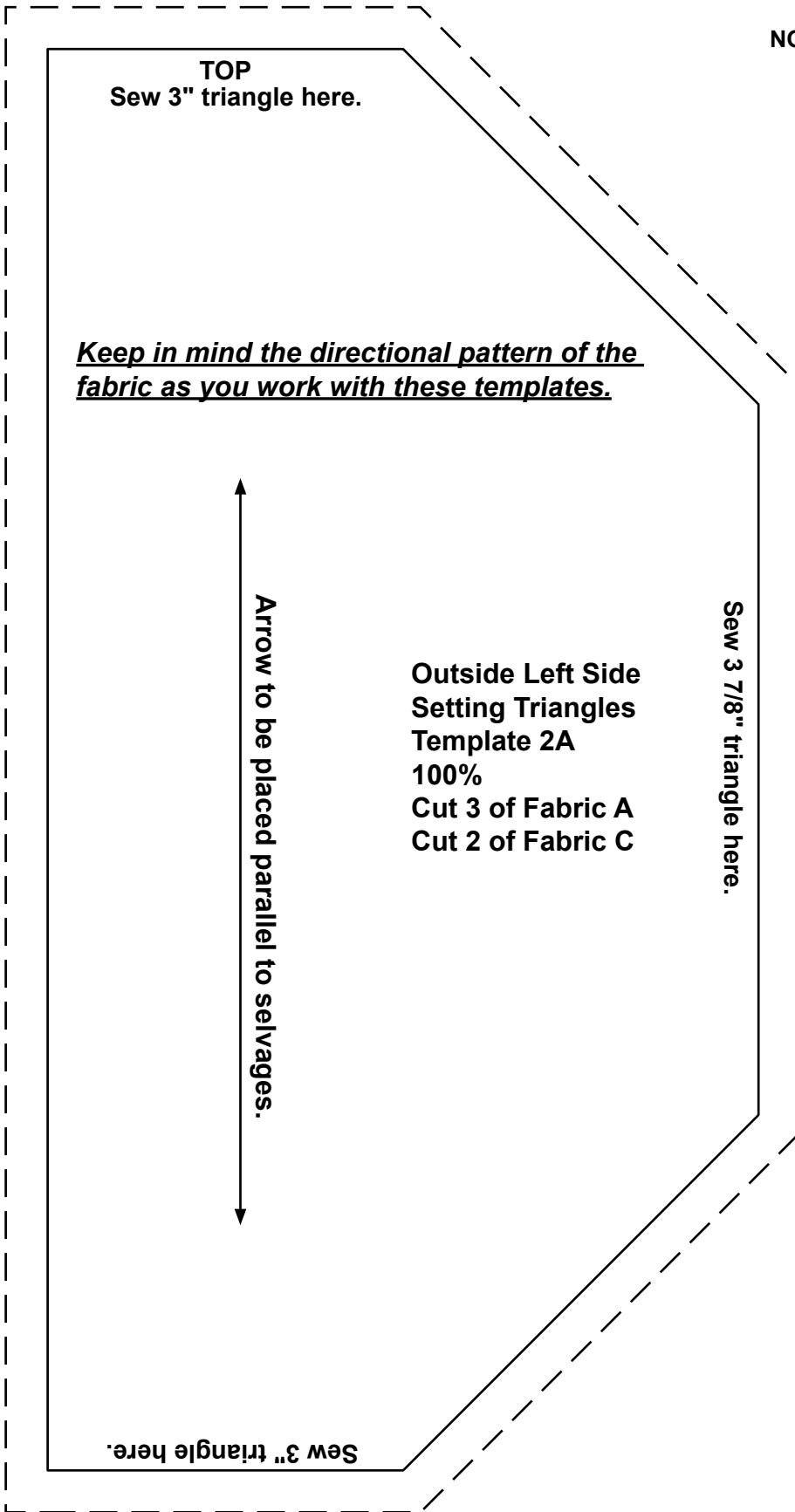
**Scale Check for
pdf files. When
you print these
templates, this ruler
should measure
2 inches long. If it
does not, change,
"page scaling" to
"none" in the print
dialog box.**

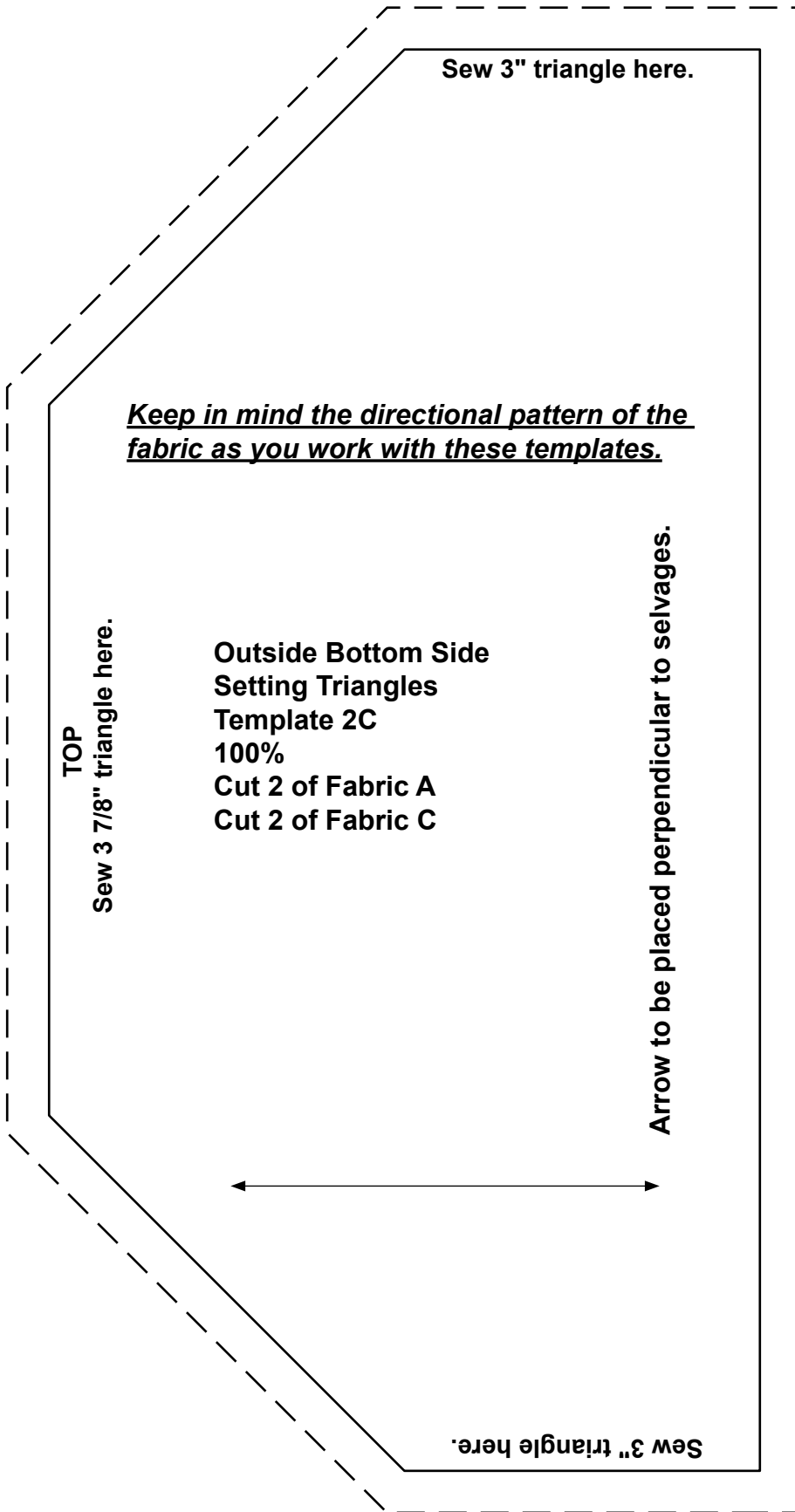


NOTE: A and C Fabrics are directional. Templates indicate specific information based on placement of piece within the quilt.

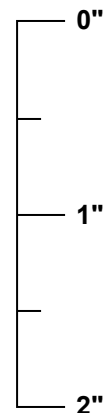


**NOTE: A and C Fabrics are directional.
Templates indicate specific
information based on placement of
piece within the quilt.**

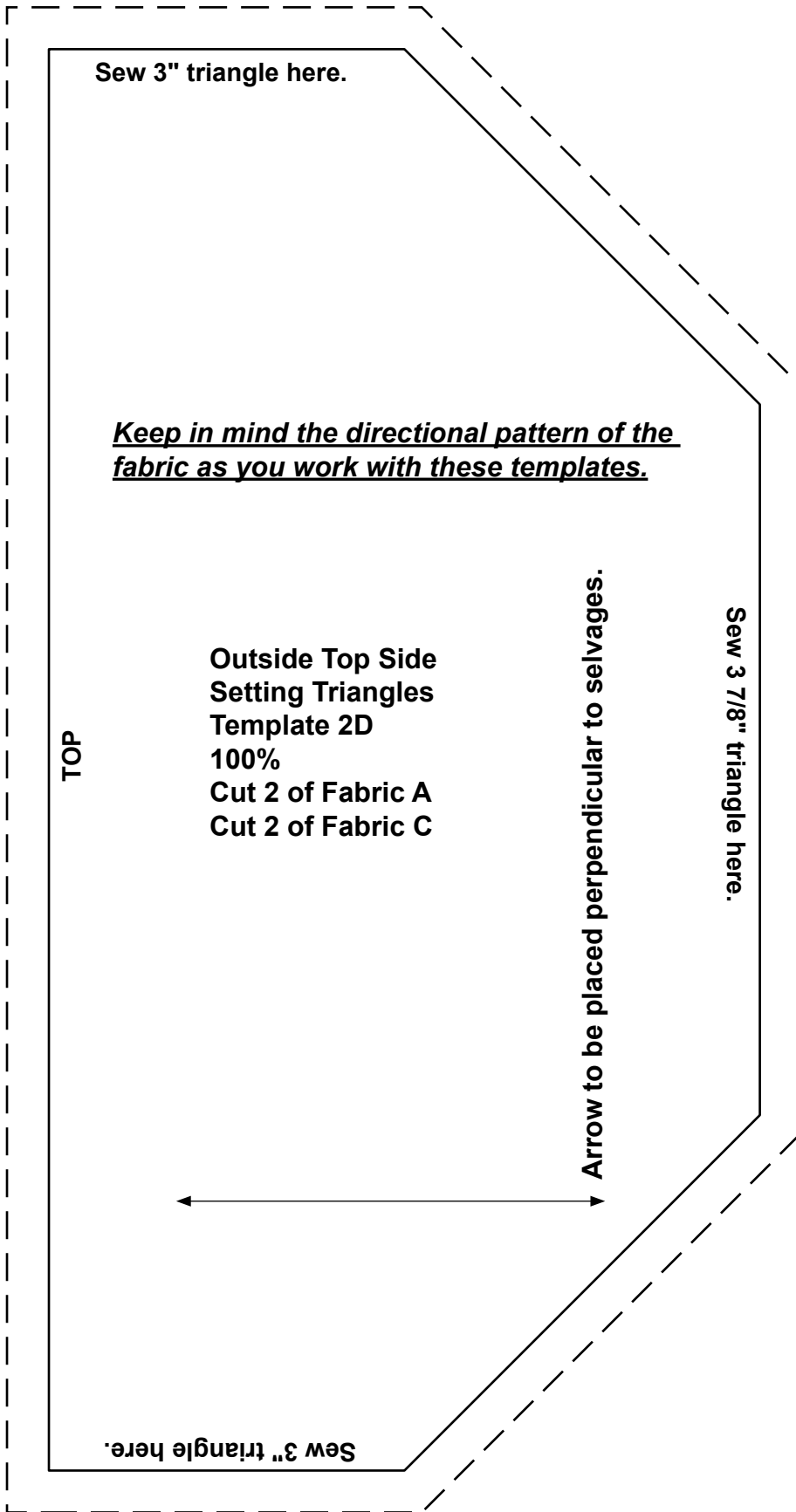




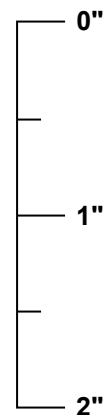
NOTE: A and C Fabrics are directional. Templates indicate specific information based on placement of piece within the quilt.



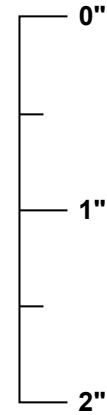
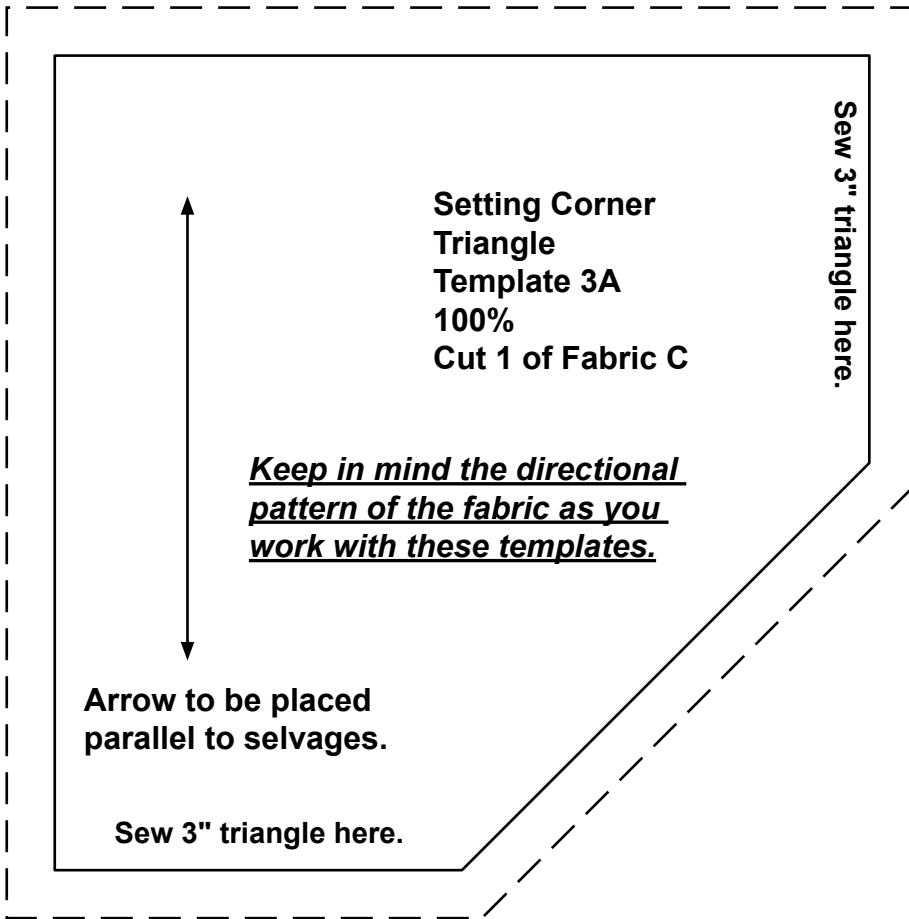
Scale Check for pdf files. When you print these templates, this ruler should measure 2 inches long. If it does not, change, "page scaling" to "none" in the print dialog box.



NOTE: A and C Fabrics are directional. Templates indicate specific information based on placement of piece within the quilt.

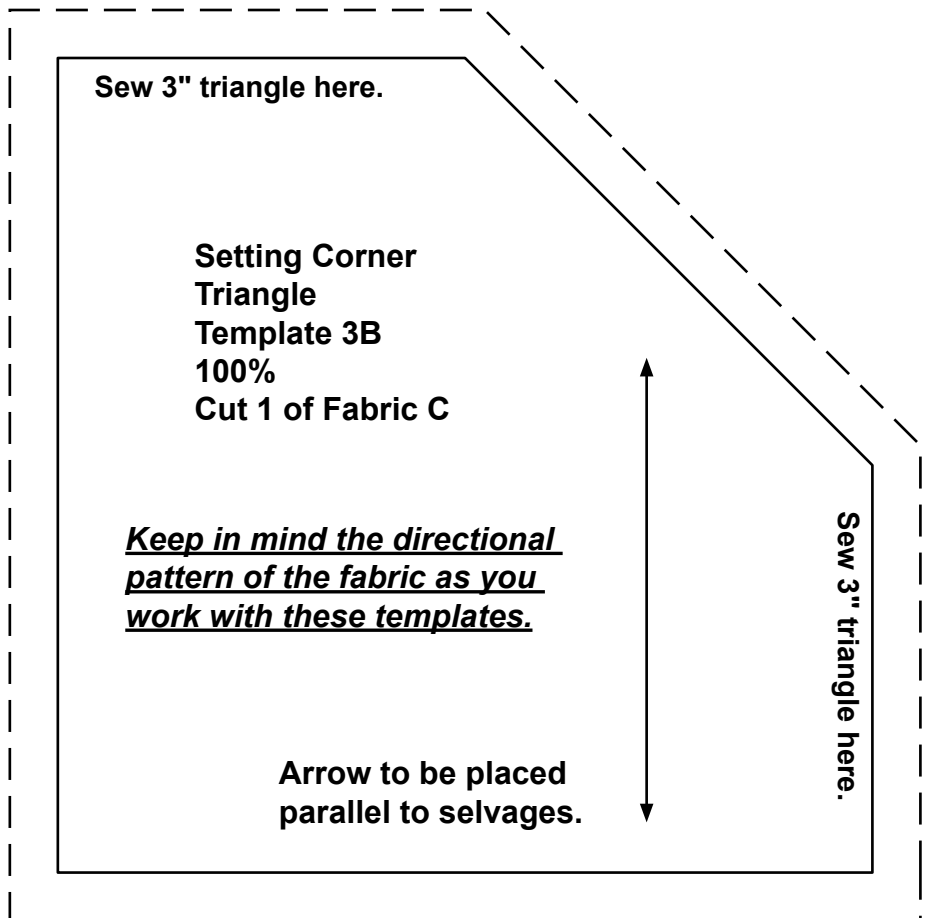


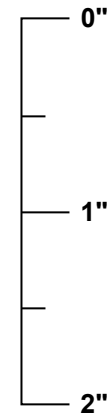
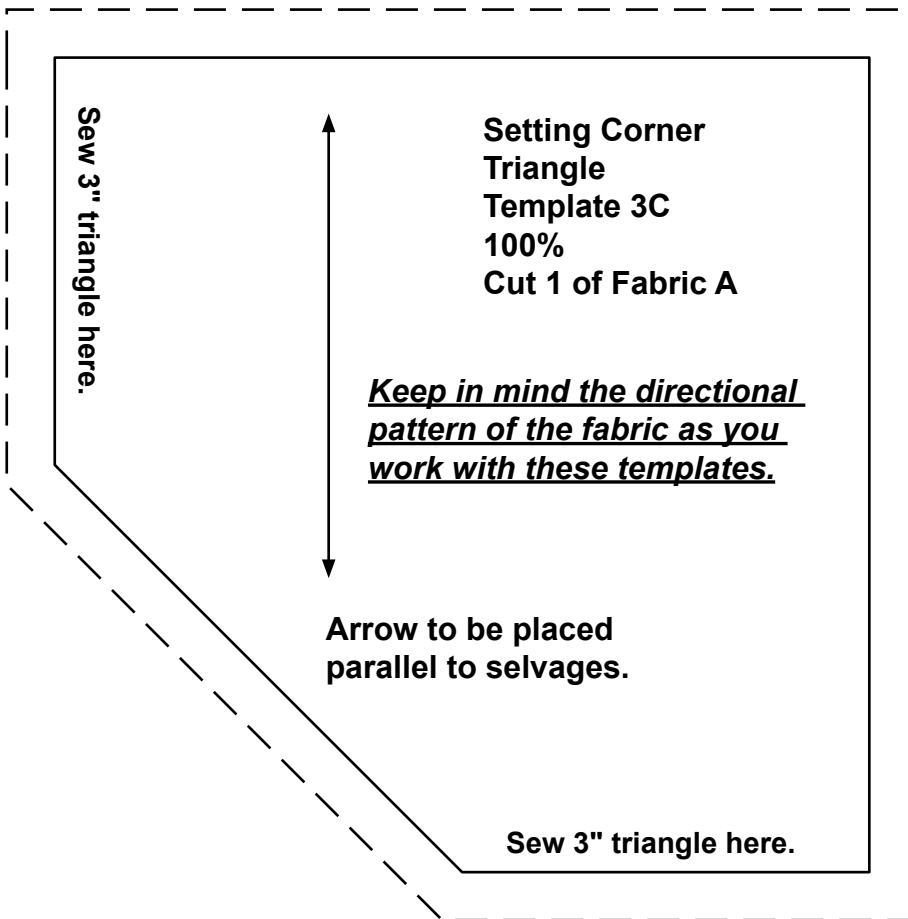
Scale Check for pdf files. When you print these templates, this ruler should measure 2 inches long. If it does not, change, "page scaling" to "none" in the print dialog box.



Scale Check for pdf files. When you print these templates, this ruler should measure 2 inches long. If it does not, change, "page scaling" to "none" in the print dialog box.

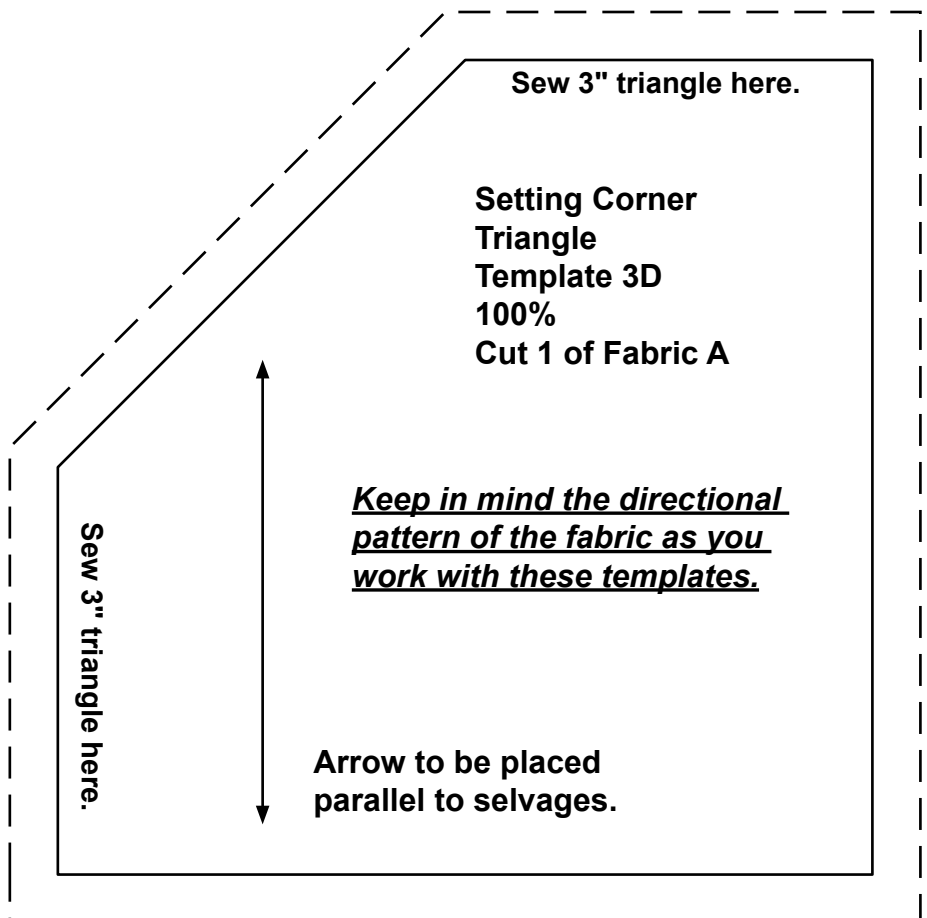
NOTE: A and C Fabrics are directional. Templates indicate specific information based on placement of piece within the quilt.





Scale Check for pdf files. When you print these templates, this ruler should measure 2 inches long. If it does not, change, "page scaling" to "none" in the print dialog box.

NOTE: A and C Fabrics are directional. Templates indicate specific information based on placement of piece within the quilt.



Mystical Kingdom

Fabric Collection by P&B Textiles



MKIN 5281 MU*†



MKIN 5282 T*



MKIN 5282 WP*



MKIN 5283 DT



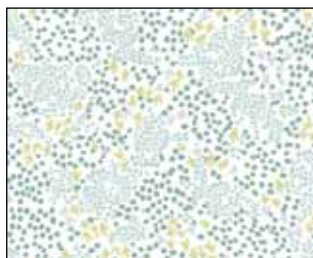
MKIN 5283 P*



MKIN 5284 W



MKIN 5285 WP*



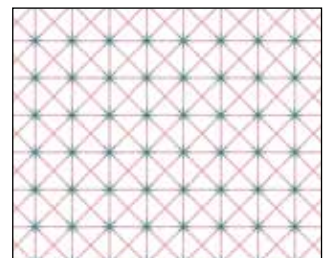
MKIN 5285 WT*



MKIN 5286 WP



MKIN 5286 WT*



MKIN 5287 PT



MKIN 5288 MU



MKIN 5289 DP



MKIN 5289 DT*



MKIN 5289 P



MKIN 5289 T*