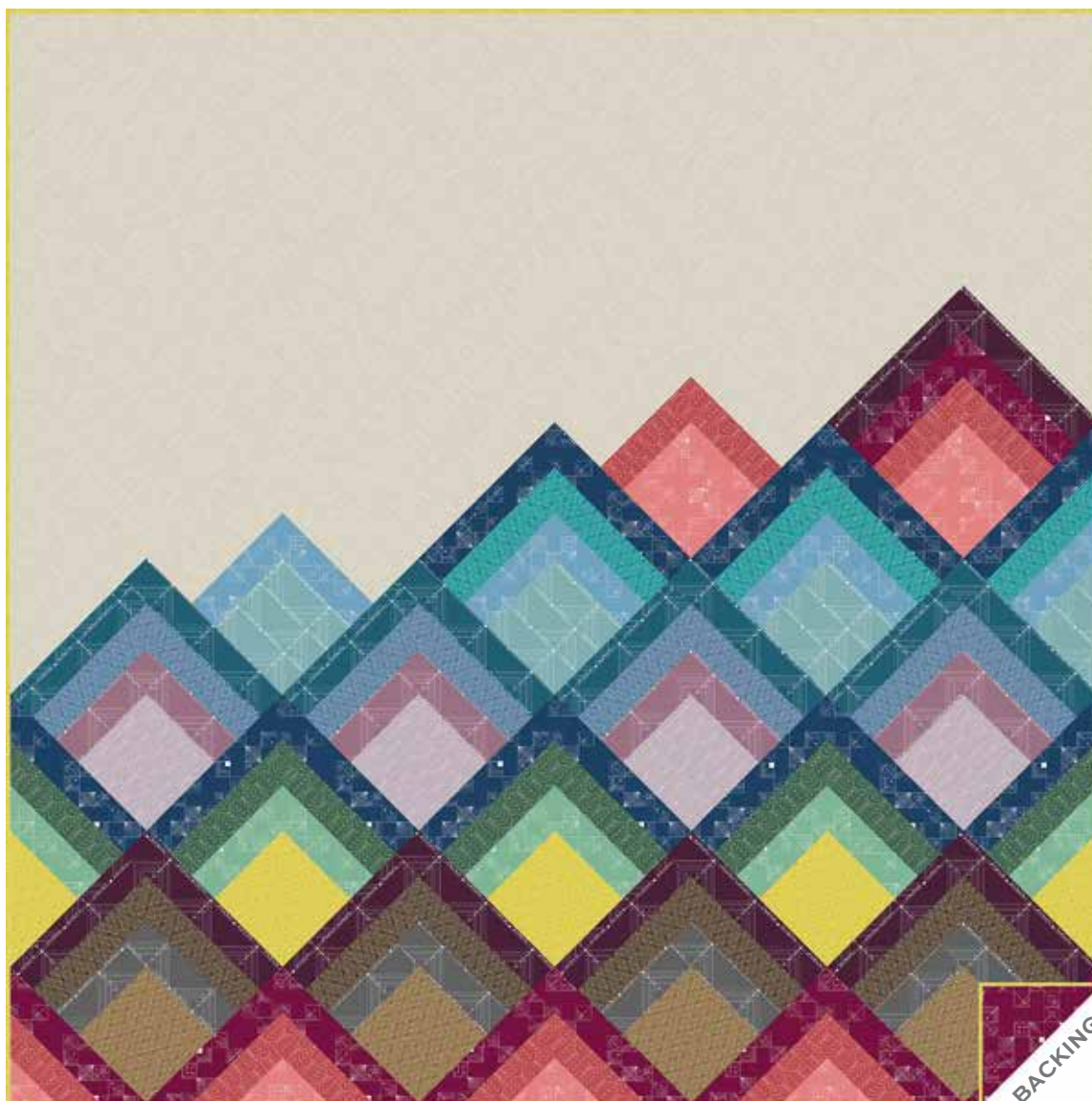


# Century Prints – Deco

GIUCY GIUCE

**a**  
100  
*years*



Deco Deconstruction Quilt designed by: **Giucy Giuce** • Quilt Size: **68" x 68"**

Skill Level: **Intermediate** • [andoverfabrics.com](http://andoverfabrics.com)

andover • [makower.uk](http://makower.uk)

Free Pattern Download Available

1384 Broadway New York, NY 10018  
Tel. (800) 223-5678 • [andoverfabrics.com](http://andoverfabrics.com)

1/15/21

# Deco Deconstruction Quilt

Introducing Andover Fabrics new collection: CENTURY PRINTS – DECO by Giucy Giuce

Quilt designed by Giucy Giuce



Quilt finishes 68" x 68"

24 Blocks: 12" x 12"

*Log Cabin blocks have never looked so new! Art Deco fabric prints, reminiscent of Frank Lloyd Wright's windows, contribute to the unusual theme in this elegant wall quilt. This retro-modern design, with parts of blocks disappearing into the background, will appeal to contemporary quilters.*

## Cutting Directions

**Note:** Read assembly directions before cutting patches. All measurements are cut sizes and include 1/4" seam allowances. A fat 1/4 is an 18" x 20"-22" cut. WOF designates the width of fabric from selvedge to selvedge (approximately 42" wide).

**Fabric A** Cut (5) strips 2 1/2" x 10 1/2"  
Cut (7) strips 2 1/2" x 8 1/2"  
Cut (2) strips 2 1/2" x 6 1/2"

**Fabric B** Cut (2) squares 18 1/4" x 18 1/4",  
cut in half diagonally twice to make  
(8) quarter-square triangles  
(6 will be needed)  
Cut (9) squares 12 1/2" x 12 1/2"  
Cut (1) square 9 1/2" x 9 1/2", cut in half  
diagonally to make (2) half-square  
triangles  
Cut (2) strips 4 1/2" x 12 1/2"  
Cut (2) strips 4 1/2" x 8 1/2"

**Fabric C** Cut (5) strips 2 1/2" x 10 1/2"  
Cut (5) strips 2 1/2" x 8 1/2"

**Fabrics D, F, and L** From each:  
Cut (4) squares 6 1/2" x 6 1/2"

**Fabrics E and G** From each:  
Cut (4) strips 2 1/2" x 10 1/2"  
Cut (4) strips 2 1/2" x 8 1/2"

**Fabric H** Cut (5) squares 6 1/2" x 6 1/2"

**Fabric I** Cut (3) strips 2 1/2" x 10 1/2"  
Cut (3) strips 2 1/2" x 8 1/2"

**Fabric J** Cut (5) strips 2 1/2" x 12 1/2"  
Cut (5) strips 2 1/2" x 10 1/2"

## Fabric Requirements

		<b>Yardage</b>	<b>Fabric</b>
<b>Fabric A</b>	blocks	1/2 yard	CS-28 Barn Rose
<b>Fabric B</b>	blocks	2 yards	CS-28 Champagne
<b>Fabric C</b>	blocks	fat 1/4 yard	CS-28 Hunter
<b>Fabric D</b>	blocks	fat 1/4 yard	CS-28 Whisper
<b>Fabric E</b>	blocks	fat 1/4 yard	CS-29 Chocolate
<b>Fabric F</b>	blocks	fat 1/4 yard	CS-29 Cinnamon
<b>Fabric G</b>	blocks	fat 1/4 yard	CS-29 Denim
<b>Fabric H</b>	blocks	fat 1/4 yard	*CS-29 Sulphur
<b>Fabric I</b>	blocks	fat 1/4 yard	CS-29 Teal
<b>Fabric J</b>	blocks	1/4 yard	CS-30 Aubergine
<b>Fabric K</b>	blocks	fat 1/4 yard	CS-30 Earth
<b>Fabric L</b>	blocks	fat 1/4 yard	CS-30 Faded
<b>Fabric M</b>	blocks	1/4 yard	CS-30 Lagoon
<b>Fabric N</b>	blocks	fat 1/4 yard	CS-30 Pressed Flower
<b>Fabric O</b>	blocks	fat 1/4 yard	CS-31 Chambray Blue
<b>Fabric P</b>	blocks	1/2 yard	CS-31 Dawn
<b>Fabric Q</b>	blocks	fat 1/4 yard	CS-31 Jade
<b>Fabric R</b>	blocks	1/2 yard	**CS-31 Mulberry
<b>Fabric S</b>	blocks	1/2 yard	CS-31 Uniform
<b>Binding</b>		1/2 yard	*CS-29 Sulphur
<b>Backing</b>		4 1/2 yards	**CS-31 Mulberry

**Fabrics K, N, and O** From Each:  
Cut (4) strips 2 1/2" x 8 1/2"  
Cut (4) strips 2 1/2" x 6 1/2"

**Fabric M** Cut (4) strips 2 1/2" x 12 1/2"  
Cut (4) strips 2 1/2" x 10 1/2"

**Fabric P** Cut (5) squares 8 1/2" x 8 1/2"  
Cut (2) squares 6 1/2" x 6 1/2"

**Fabric Q** Cut (5) strips 2 1/2" x 8 1/2"  
Cut (5) strips 2 1/2" x 6 1/2"

**Fabric R** Cut (5) strips 2 1/2" x 12 1/2"  
Cut (6) strips 2 1/2" x 10 1/2"  
Cut (1) strip 2 1/2" x 8 1/2"

**Fabric S** Cut (8) strips 2 1/2" x 12 1/2"  
Cut (8) strips 2 1/2" x 10 1/2"

**Binding** Cut (7) strips 2 1/2" x WOF for binding

**Backing** Cut (2) panels 38" x 76", pieced to fit  
quilt top with overlap on all sides

## Making the Quilt

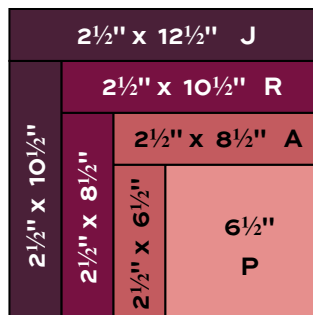
1. Referring to the block diagrams, make the number of blocks in the fabrics shown. Press all seam allowances away from the corner squares. There are 24 blocks total.

2. Refer to the Quilt Diagram. On a large flat surface or design wall, arrange the blocks and Fabric B squares and triangles in diagonal rows. Press seam allowances in alternating rows in opposite directions. Stand back to be certain that the blocks are in the correct position. Looking through a camera or the wrong end of binoculars may help you find mistakes. Once you are satisfied with the arrangement, join the blocks in rows, and then join the rows.

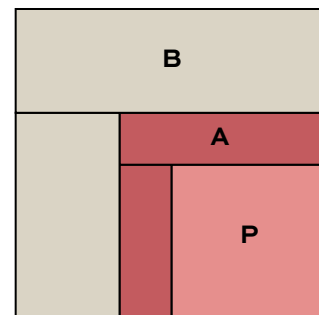
3. The blocks that stick out from the quilt along the sides and bottom need to be trimmed. Position a large rectangular acrylic ruler along the quilt's left side, aligning it with the outer edges of the Fabric B quarter-square triangles. If you have a large square ruler, align it at the bottom left corner. The edges of the rulers should align along the side. Lightly mark the cutting line, as shown by the dashed line on the Quilt Diagram. Be sure to leave an adequate  $\frac{1}{4}$ " seam allowance so the corners of the untrimmed blocks will not get caught in the seam. Continue around the quilt until you have marked the Log Cabin blocks that need trimmed. Before cutting, measure the quilt between the marked lines, both horizontally and vertically, to be certain that the quilt is square. The 2 Fabric B triangles in the corners are cut slightly oversize, so be sure to trim them as needed. Once you are satisfied that the marked line is correct, trim along the line.

## Finishing the Quilt

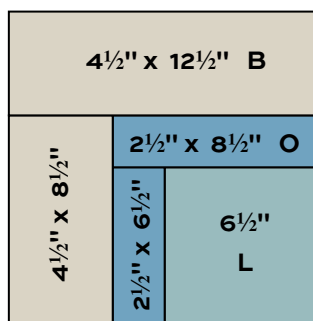
4. Layer the quilt with batting and backing and baste. Quilt in the ditch around block patches. Quilt a design of your choice in the Fabric B squares. One suggestion: Quilt lines in the plain squares to make them look like "ghost" Log Cabin blocks. Bind to finish the quilt.



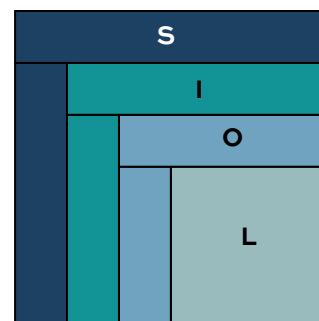
Make 1



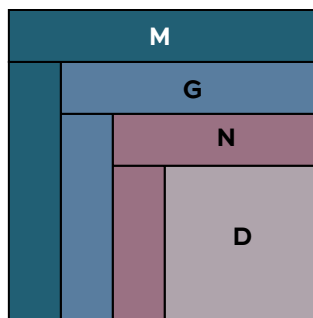
Make 1



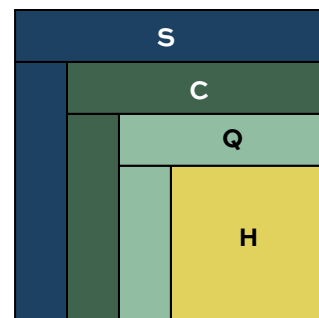
Make 1



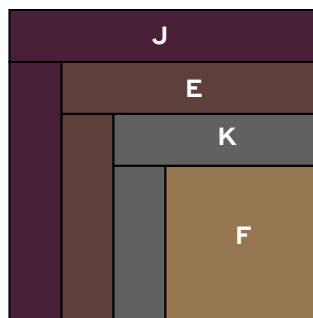
Make 3



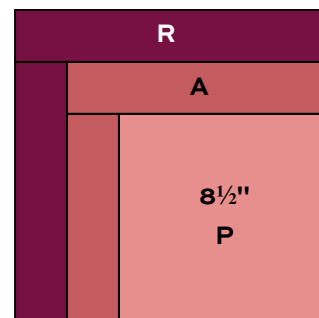
Make 4



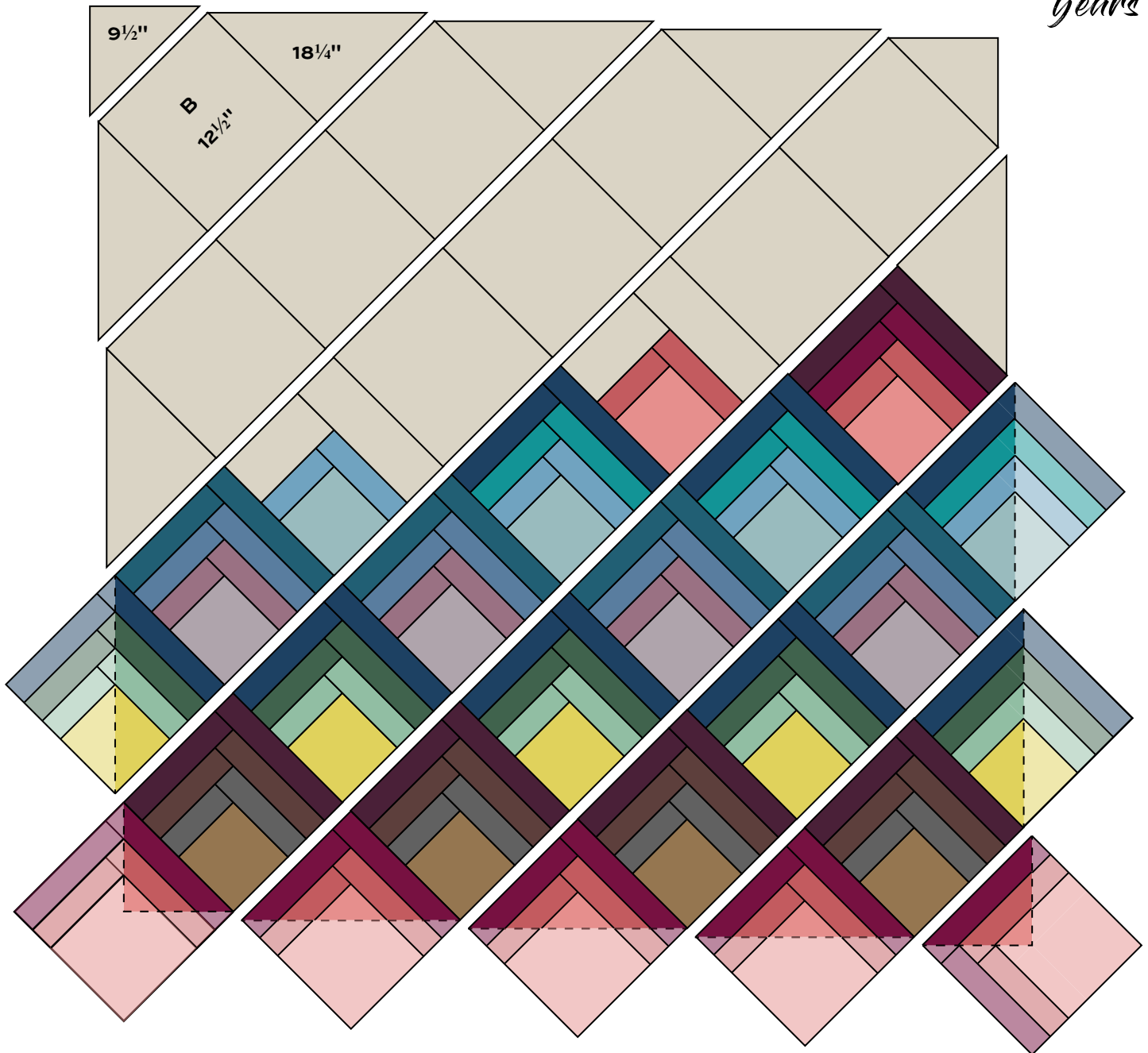
Make 5



Make 4



Make 5

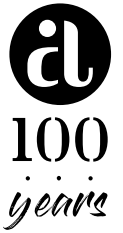


Quilt Diagram

Blocks will be trimmed after the quilt is assembled.

# Century Prints – Deco

GIUCY GIUCE



\*Indicates fabrics used in quilt pattern. Fabrics shown are 100% of actual size.



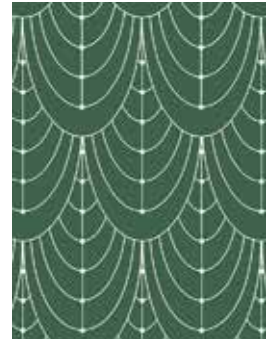
CS-28 Barn Rose\*



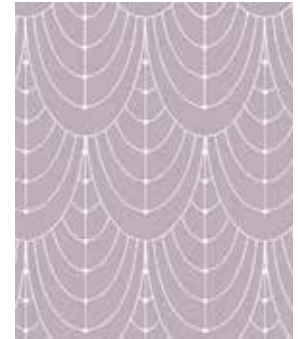
CS-28 Brass



CS-28 Champagne\*



CS-28 Hunter\*



CS-28 Whisper\*



CS-29 Chocolate\*



CS-29 Cinnamon\*



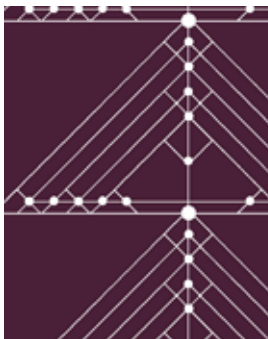
CS-29 Denim\*



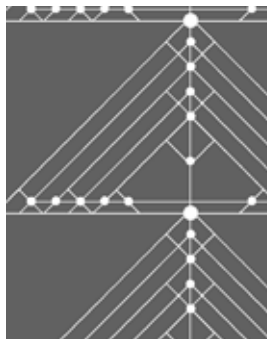
CS-29 Sulphur\*



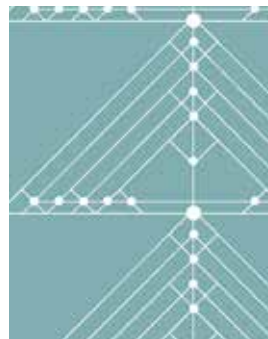
CS-29 Teal\*



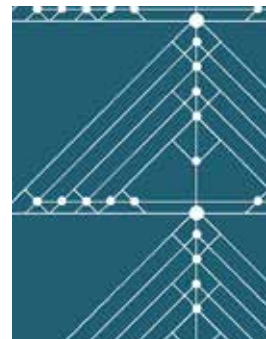
CS-30 Aubergine\*



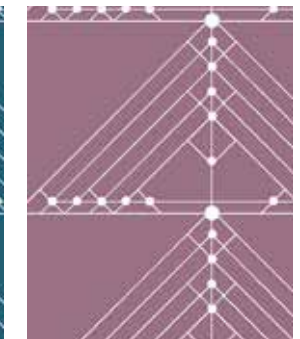
CS-30 Earth\*



CS-30 Faded\*



CS-30 Lagoon\*



CS-30 Pressed Flower\*



CS-31 Chambray Blue\*



CS-31 Dawn\*



CS-31 Jade\*



CS-31 Mulberry\*



CS-31 Uniform\*

andover

•  
•  
• [makower.uk](http://makower.uk)  
•

Free Pattern Download Available

1384 Broadway New York, NY 10018  
Tel. (800) 223-5678 • [andoverfabrics.com](http://andoverfabrics.com)