

## Safety Precautions

### **▲WARNING**

#### IMPORTANT SAFETY INSTRUCTIONS

- A. SAVE THESE INSTRUCTIONS – To reduce the risks of fire or explosion, electrical shock, and the injury to persons, read and understand all instructions included in this manual. Be familiar with the controls and the proper usage of the equipment.**
- B. WARNING – To reduce the risk of fire or explosion:**
1. Do not spray flammable or combustible materials near an open flame, pilot lights or sources of ignition such as hot objects, cigarettes, motors, electrical equipment and electrical appliances. Avoid creating sparks from connecting and disconnecting power cords.
  2. For units intended for use with only water-based materials — Do not spray or clean with flammable liquids. For use with water-based liquids only.
  3. For units intended for use with only water-based or mineral spirit-type materials with a minimum flash point of 21°C (69.8°F) — Do not spray or clean with liquids having a flash point of less than 21°C (69.8°F). Flash point is the temperature at which a fluid can produce enough vapor to ignite.
  4. Paint or solvent flowing through the equipment is able to result in static electricity. Static electricity creates a risk of fire or explosion in the presence of paint or solvent fumes. All parts of the spray system, including the pump, hose assembly, spray gun and objects in and around the spray area shall be properly grounded to protect against static discharge and sparks. Use only conductive or grounded high-pressure airless paint sprayer hoses specified by the manufacturer.
  5. Verify that all containers and collection systems are grounded to prevent static discharge.
  6. Connect to a grounded outlet and use grounded extension cords. Do not use a 3 to 2 adapter.
  7. Do not use a paint or solvent containing halogenated hydrocarbons. Such as chlorine, bleach, mildewicide, methylene chloride and trichloroethane. They are not compatible with aluminum. Contact the coating supplier about compatibility of material with aluminum.
  8. Keep spray area well ventilated. Keep a good supply of fresh air moving through the area to keep the air within the spray area free from accumulation of flammable vapors. Keep pump assembly in well ventilated area. Do not spray pump assembly.
  9. Do not smoke in the spray area.
  10. Do not operate light switches, engines, or similar spark producing products in the spray area.
  11. Keep area clean and free of paint or solvent containers, rags, and other flammable materials.
  12. Know the contents of the paint and solvents being sprayed. Read all Material Safety Data Sheets (MSDS) and container labels provided with the paints and solvents. Follow the paint and solvent manufacturer's safety instructions.
  13. Place pump at least 25 feet (7.62 meters) from the spray object in a well ventilated area (add more hose if necessary). Flammable vapors are often heavier than air. Floor area must be extremely well ventilated. The pump contains arcing parts that emit sparks and can ignite vapors.
  14. Plastic can cause static sparks. Never hang plastic to enclose spray area. Do not use plastic drop cloths when spraying flammable material.
  15. Fire extinguisher equipment shall be present and working.

### **▲WARNING**

#### C. WARNING – To reduce the risk of skin injection:

##### HAZARD:

**Injection injury – A high pressure fluid stream produced by this equipment can pierce the skin and underlying tissues, leading to a serious injury and possible amputation. See a physician immediately. DO NOT TREAT AN INJECTION AS A SIMPLE CUT.**

1. Do not aim the gun at, or spray any person or animal.
2. Keep hands and other body parts away from the discharge. For example, do not try to stop leaks with any part of the body.
3. Always use the nozzle tip guard. Do not spray without the nozzle tip guard in place.
4. Only use a nozzle tip specified by the manufacturer.
5. Use caution when cleaning and changing nozzle tips. In the case where the nozzle tip clogs while spraying, ALWAYS lock gun trigger, shut pump off, and release all pressure before servicing, cleaning tip or guard, or changing tip. Pressure will not be released by turning off the motor. The PRIME/SPRAY valve handle must be turned to PRIME to relieve the pressure. Refer to PRESSURE RELIEF PROCEDURE described in the pump manual.
6. Do not leave the unit energized or under pressure while unattended. When the unit is not in use, turn off the unit and relieve the pressure in accordance with the manufacturer's instructions.
7. High-pressure spray is able to inject toxins into the body and cause serious bodily injury. In the event that injection occurs, seek medical attention immediately.
8. Check hoses and parts for signs of damage, a leak can inject material into the skin. Inspect hose before each use. Replace any damaged hoses or parts.
9. This system is capable of producing 3600 PSI / 24.8 MPa. Only use replacement parts or accessories that are specified by the manufacturer and that are rated a minimum of 3600 PSI. This includes spray tips, nozzle guards, guns, extensions, fittings, and hose.
10. Always engage the trigger lock when not spraying. Verify the trigger lock is functioning properly.
11. Verify that all connections are secure before operating the unit.
12. Know how to stop the unit and bleed pressure quickly. Be thoroughly familiar with the controls. Pressure will not be released by turning off the motor. The PRIME/SPRAY valve handle must be turned to PRIME to relieve the pressure. Refer to PRESSURE RELIEF PROCEDURE described in the pump manual.
13. Always remove the spray tip before flushing or cleaning the system.

### **▲WARNING**

#### D. WARNING – To reduce the risk of injury:

1. Always wear appropriate gloves, eye protection, clothing and a respirator or mask when painting. Hazardous vapors – Paints, solvents, insecticides, and other materials can be harmful if inhaled or come in contact with body. Vapors can cause severe nausea, fainting or poisoning.

2. Do not operate or spray near children. Keep children away from equipment at all times.
3. Do not overreach or stand on an unstable support. Keep effective footing and balance at all times.
4. Stay alert and watch what you are doing.
5. Do not operate the unit when fatigued or under the influence of drugs or alcohol.
6. Do not kink or over-bend the hose. Airless hose can develop leaks from wear, kinking and abuse. A leak can inject material into the skin.
7. Do not expose the hose to temperatures or pressures in excess of those specified by manufacturer.
8. Do not use the hose as a strength member to pull or lift the equipment.
9. Use lowest possible pressure to flush equipment.
10. Follow all appropriate local, state and national codes governing ventilation, fire prevention and operation.
11. The United States Government Safety Standards have been adopted under the Occupational Safety and Health Act (OSHA). These standards, particularly part 1910 of the General Standards and part 1926 of the Construction Standards should be consulted.
12. Before each use, check all hoses for cuts, leaks, abrasion or bulging of cover. Check for damage or movement of couplings. Immediately replace hose if any of those conditions exist. Never repair a paint hose. Replace with a conductive high-pressure hose.
13. Do not spray outdoors on windy days.
14. Always unplug cord from outlet before working on equipment.

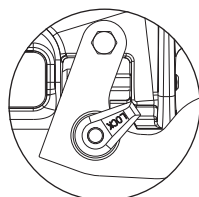
## Setup

### **⚠ WARNING**

Never attempt to assemble, change, or clean the gun, tip, or tip guard without first relieving pressure from the spray system. Follow the "Pressure Relief Procedure" in the sprayer's Owner's Manual.

### **⚠ WARNING**

Always use a tip safety guard for added protection against injection. Beware that the guard alone will not prevent injection. Never cut off tip guard! Always engage gun trigger lock when the gun is not in use. Before servicing equipment, consult Owner's Manuals and follow all warnings.



Trigger lock in locked position.

1. Set up the sprayer. Refer to the instructions in the sprayer's Owner's Manual.
2. Attach a conductive or grounded, airless spray hose to the material inlet on the gun. Using two wrenches (one on the gun and one on the hose), tighten securely.
3. With the roller extension or tip extension off the gun, start the sprayer. Flush and prepare the spray system according to the sprayer's Owner's Manual. Inspect the spray system to make sure that all fittings are secure and that there are no leaks.
4. Perform the "Pressure Relief Procedure" described in the sprayer's Owner's Manual.

## Operation

1. Make sure the extension or tip assembly is attached to the gun and set up properly for operation. Refer to the instructions that came with the extension or tip assembly.
2. Start the sprayer. Refer to the instructions in the sprayer's Owner's Manual.
3. For roller applications:
  - a. Adjust the fluid pressure on the sprayer to its lowest possible setting.
  - b. Pull the trigger with quick strokes just enough to bring paint to the roller cover.
3. For spray applications;
  - a. Adjust the fluid pressure on the sprayer until the spray is completely atomized. Always spray at the lowest pressure necessary to get the desired results.

**NOTE: The spray tip determines the size of spray pattern and coverage. When more coverage is needed, use a larger tip instead of increasing fluid pressure.**

- b. Operate the trigger using the same technique as with standard pistol-grip airless spray guns.

**NOTE: When using this gun with an airless tip extension, spitting will occur when it is first activated due to air in the line.**

## Cleanup

Maintaining a clean gun is important to ensure trouble-free operation. Remove the roller extension/tip extension and flush the gun after each use. Store in a dry location. Do not leave the gun or any of its parts in water or solvents.

### **⚠ WARNING**

Special cleanup instructions for use with flammable solvents:

- Always flush spray gun preferably outside and at least one hose length from spray pump.
- If collecting flushed solvents in a one gallon metal container, place it into an empty five gallon container, then flush solvents.
- Area must be free of flammable vapors.
- Follow all cleanup instructions.

### **⚠ CAUTION**

The sprayer, hose, and gun should be cleaned thoroughly after daily use. Failure to do so permits material to cake, seriously affecting the performance of the unit.

### **⚠ WARNING**

Always spray at minimum pressure with the roller extension/tip extension removed when using mineral spirits or any other solvent to clean the sprayer, hose, or gun. Static electricity buildup may result in a fire or explosion in the presence of flammable vapors. Hold the gun firmly against a metal container while flushing.

## Maintenance

### **WARNING**

Follow all safety precautions as described in the Safety Precautions section of this manual before proceeding.

## Replacing/Serviceing the Seal Assembly

If the spray gun leaks or spits at the tip when the trigger is released, the needle or seat is worn, damaged, or dirty and must be replaced or cleaned. Refer to the Parts List section in this manual for part identification.

### **WARNING**

Never attempt to perform maintenance on the spray gun without first performing the "Pressure Relief Procedure."

1. Disconnect the airless spray hose from the gun.
2. Remove the roller extension or tip extension.
3. With the trigger depressed, remove the diffuser from the front of the gun.
4. Remove the trigger guard.
  - a. Pull the back of the trigger guard down so that it comes loose from the swivel assembly on the handle.
  - b. Twist the front of the trigger guard out of the slot in the gun head.
5. Remove the two trigger screws that secure the trigger to the gun head. Remove the trigger.
6. Remove the handle assembly from the gun head. Pull the filter out of the gun head.
7. Using a 3/8" socket, remove the lock nut from the threaded end of the seal assembly inside the back of the gun head.
8. Using a pliers, pull the seal assembly from the front of the gun head.
9. Soak the removed parts in the appropriate solvent and wipe clean.
10. Inspect the parts for wear or damage and use new parts during reassembly of the gun, when necessary.

**NOTE: Lubricate all packings and moving parts with a lithium-based grease before reassembly .**

11. Install the seal assembly into the front of the gun head. Make sure the threaded portion of the seal assembly is aligned with the rectangular hole in the back of the gun head.
12. Thread the lock nut onto the threaded shaft of the seal assembly in the back of the gun head. Tighten the nut until approximately 1/16" of the seal assembly shaft sticks out past the nut.
13. Push the filter into the gun head. Make sure the handle seal is in position and thread the handle assembly into the gun head until secure.
14. Reassemble the trigger.
15. Install the seal washer into the front of the gun head.
16. With the trigger depressed, install the diffuser into the front of the gun head. Torque to 45–50 ft./lbs.
17. Test the operation of the trigger. There should be a small amount of play in the trigger after the trigger is released. This will ensure that the seal assembly is fully seated in the diffuser and the gun is shut off when the trigger is released. Adjust the position of the lock nut on the seal assembly if trigger adjustment is necessary.
18. Reassemble the trigger guard.
19. Start the sprayer and pressurize the gun (refer to the instructions in the sprayer's Owner's Manual). Check the gun for leaks.
20. Move the trigger lock to the locked position. Pull the trigger and check for leaks.

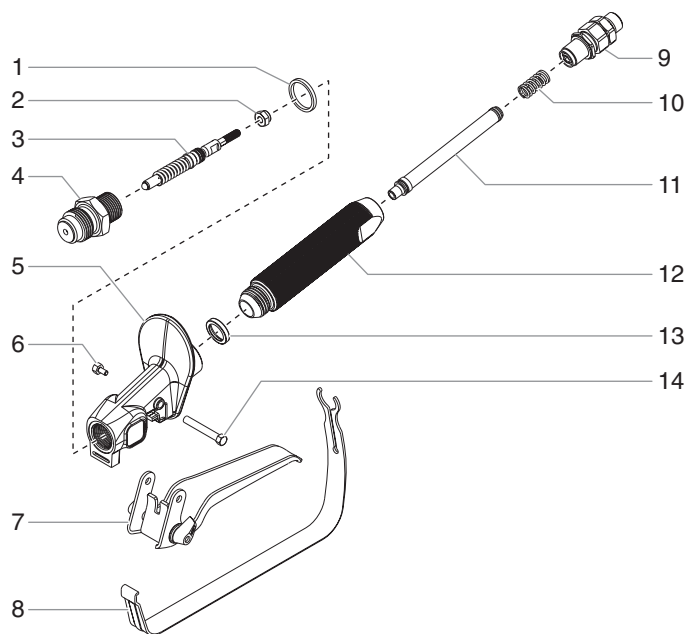
## Replacing/Removing the Filter

1. Pull the back of the trigger guard down so that it comes loose from the swivel assembly on the handle.
2. Remove the handle assembly from the gun head.
3. Pull the old filter out of the gun head.
4. Push the new or cleaned filter into the gun head.
5. Make sure the handle seal is in position and thread the handle assembly into the gun head until secure.
6. Snap the trigger guard back onto the handle assembly.

### Filter Chart

Part Number	Application	Filter Type	Color of Filter Body
550-486	Synthetic resin, enamels, clean varnishes, stains azures	Extrafine	red
550-485	Base coat enamels, primer enamels, fillers, marking paints, textured enamels	Fine	yellow
550-483	Emulsions, latex paints, acrylic paints	Medium	white
550-484	Filler paints, large area surfaces	Coarse	green

## Parts List



Item	Part #	Description	Quantity
1	550-437	Seal washer .....	1
2	226-001	Lock nut .....	1
3	550-447	Seal assembly .....	1
4	550-451	Diffuser .....	1
5	550-448	Gun head .....	1
6	580-513	Trigger screw, short .....	1
7	550-455	Trigger.....	1
8	550-452	Trigger guard .....	1
9	580-530	Swivel assembly .....	1
10	550-488	Filter spring.....	1
11	550-483	Filter, medium .....	1
12	580-531	Gun handle .....	1
13	560-038	Handle seal.....	2
14	550-454	Trigger screw, long .....	1
	550-487	Gun repair kit (includes items 1–4)	

## Accessories

<b>Part #</b>	<b>Description</b>
310-049	9" spray roller head assembly
310-934	9" inner feed roller head assembly
310-946	12" inner feed roller head assembly
310-383-1	Extension pole, 3'
310-386-1	Extension pole, 6'
311-050-9	9" spray roller cover, 1/2" nap
311-075-9	9" spray roller cover, 3/4" nap
311-125-9	9" spray roller cover, 1 1/4" nap
312-037-9	9" inner feed roller cover, 3/8" nap
312-050-9	9" inner feed roller cover, 1/2" nap
312-075-9	9" inner feed roller cover, 3/4" nap
312-125-9	9" inner feed roller cover, 1 1/4" nap
312-037-12	12" inner feed roller cover, 3/8" nap
312-050-12	12" inner feed roller cover, 1/2" nap
312-075-12	12" inner feed roller cover, 3/4" nap
312-125-12	12" inner feed roller cover, 1 1/4" nap

## Warranty

Titan Tool, Inc., ("Titan") warrants that at the time of delivery to the original purchaser for use ("End User"), the equipment covered by this warranty is free from defects in material and workmanship. With the exception of any special, limited, or extended warranty published by Titan, Titan's obligation under this warranty is limited to replacing or repairing without charge those parts which, to Titan's reasonable satisfaction, are shown to be defective within twelve (12) months after sale to the End User. This warranty applies only when the unit is installed and operated in accordance with the recommendations and instructions of Titan.

This warranty does not apply in the case of damage or wear caused by abrasion, corrosion or misuse, negligence, accident, faulty installation, substitution of non-Titan component parts, or tampering with the unit in a manner to impair normal operation.

Defective parts are to be returned to an authorized Titan sales/service outlet. All transportation charges, including return to the factory, if necessary, are to be borne and prepaid by the End User. Repaired or replaced equipment will be returned to the End User transportation prepaid.

THERE IS NO OTHER EXPRESS WARRANTY. TITAN HEREBY DISCLAIMS ANY AND ALL IMPLIED WARRANTIES INCLUDING, BUT NOT LIMITED TO, THOSE OF MERCHANTABILITY AND FITNESS FOR A PARTICULAR PURPOSE, TO THE EXTENT PERMITTED BY LAW. THE DURATION OF ANY IMPLIED WARRANTIES WHICH CANNOT BE DISCLAIMED IS LIMITED TO THE TIME PERIOD SPECIFIED IN THE EXPRESS WARRANTY. IN NO CASE SHALL TITAN LIABILITY EXCEED THE AMOUNT OF THE PURCHASE PRICE. LIABILITY FOR CONSEQUENTIAL, INCIDENTAL OR SPECIAL DAMAGES UNDER ANY AND ALL WARRANTIES IS EXCLUDED TO THE EXTENT PERMITTED BY LAW.

TITAN MAKES NO WARRANTY AND DISCLAIMS ALL IMPLIED WARRANTIES OF MERCHANTABILITY AND FITNESS FOR A PARTICULAR PURPOSE WITH RESPECT TO ACCESSORIES, EQUIPMENT, MATERIALS OR COMPONENTS SOLD BUT NOT MANUFACTURED BY TITAN. THOSE ITEMS SOLD, BUT NOT MANUFACTURED BY TITAN (SUCH AS GAS ENGINES, SWITCHES, HOSES, ETC.) ARE SUBJECT TO THE WARRANTY, IF ANY, OF THEIR MANUFACTURER. TITAN WILL PROVIDE THE PURCHASER WITH REASONABLE ASSISTANCE IN MAKING ANY CLAIM FOR BREACH OF THESE WARRANTIES.



### United States Sales & Service

1-800-526-5362  
Fax 1-800-528-4826

107 Bauer Drive  
Oakland, NJ 07436

[www.titantool.com](http://www.titantool.com)

### Canadian Branch

1-800-565-8665  
Fax 1-905-856-8496

200 Trowers Road, Unit 7B  
Woodbridge, Ontario L4L 5Z8

### International

1-201-337-1240  
Fax 1-201-405-7449

107 Bauer Drive  
Oakland, NJ 07436 USA