



Heavy Duty Lab Stand

Instruction Manual

The Goldleaf Scientific Heavy-Duty Lab Stand is the perfect choice for securely holding heavy or expensive lab equipment. The base is 24" deep and comes in two widths, 2ft (for a single item), or 4ft (for a full table). Additional rods can be used to hold multiple items on a single table (similar to a lattice rack). Rods come in 1" and 5/8" outer diameters and are 42" and 36" long (custom sizes are available upon request). Rods can be adjust side to side and placed anywhere along the rail.



Tools Required:

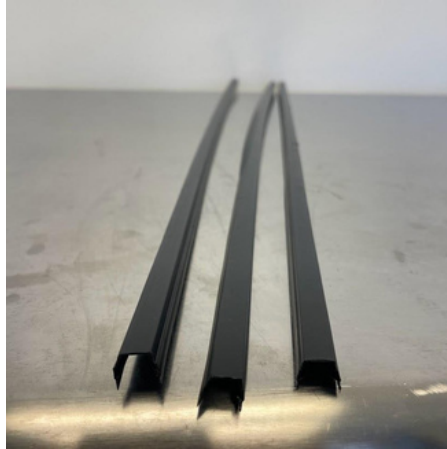
Allen wrench 3mm, 6mm

Parts List:

3 T-Slotted Framing Rail



3 Dust Guards



4 End Caps



4 Rubber stopper feet



4 Corner Brackets



1 Rod clamp



1 Rod





Assembly Instructions

Insert bolts into each side of the corner bracket

1.

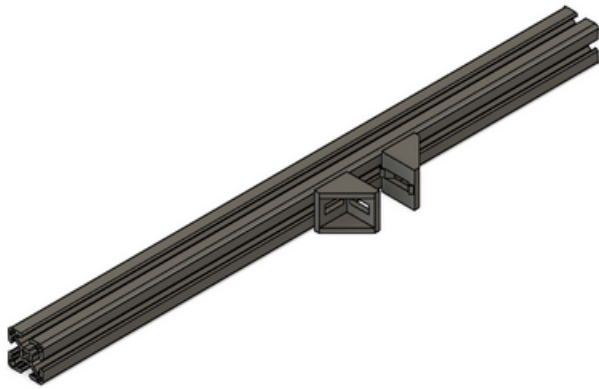


Slide corner bracket into the rail

2



- 3 Repeat with another corner bracket so that the diagonal sides are facing the opposite direction from each other (do not tighten).



- 4 Slide rail in between corner brackets. Adjust so that the cross rail is roughly $\frac{1}{3}$ the distance from the end of the other rail



5. Insert T-nut and slide rod clamp into the rail. Adjust position at halfway (12" from the end of the rail), or as desired. Tighten rod clamp

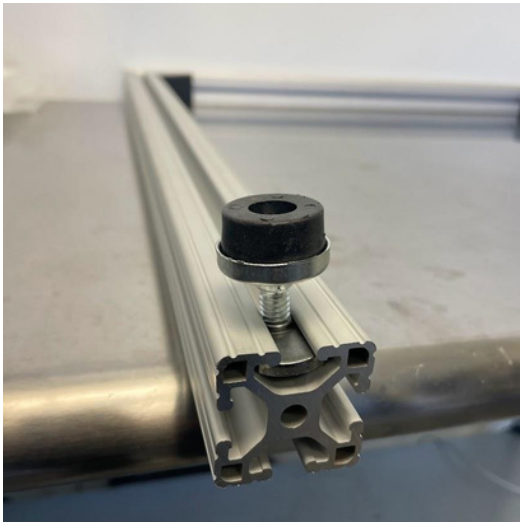


6. Repeat steps 1-3 for the other rail

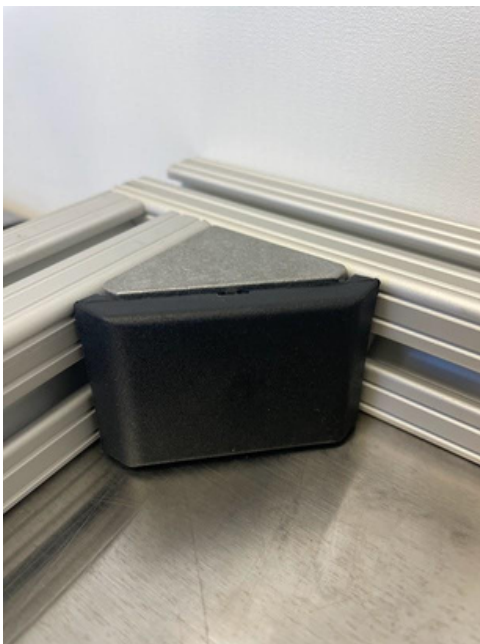


7. Adjust positioning as desired and make sure the placement is even. Tighten the corner clamps once the base is square.

8. Flip the assembly and Insert rubber feet into the opposite side of the rail. Position the feet at the ends of the rail, or where they fit best for your table.



9. Insert end caps into the corner brackets



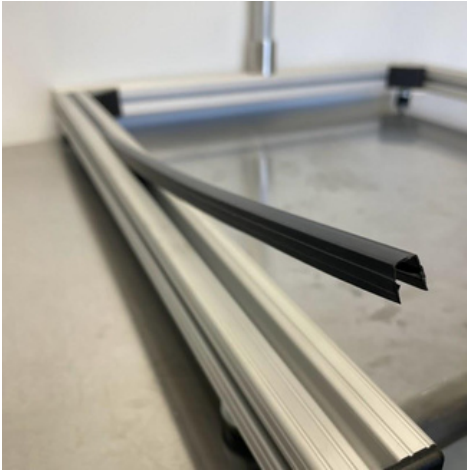


10. Insert rod and secure using screws on rod bracket.

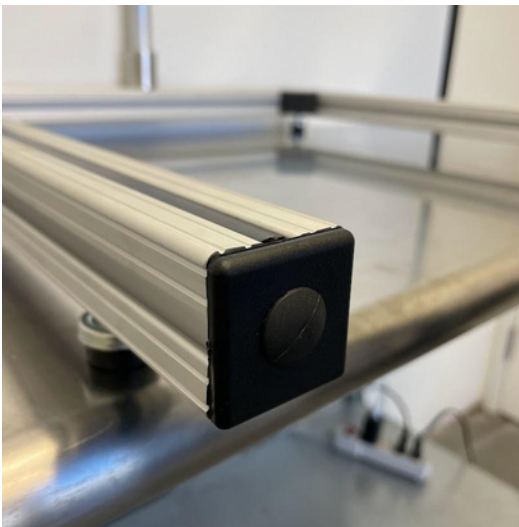


Goldleaf Scientific

11 Insert dust guards on desired parts of rail



12 Insert end caps to end of rails



Assembly is now complete.