

# RIOS SHAWL



**RIOS, Malabrigo**  
*100% Superwash Merino Wool*  
*3.5 oz, 210 yds*



**Knit & Crochet**<sup>MR</sup>  
STORES

# INSTRUCTIONS

## MATERIALS

- 1 hank RIOS, Malabrigo (3.5 oz, 210 yds)
- Circular needles US 10

## NOTES

- See diagrams A.1 and A.2, the diagrams show all rows in the pattern from the right side.
- The piece is worked back and forth, top down.

## SHAWL

Cast on 7 stitches.

Knit 1 row.

Continue with GARTER STITCH - see description above and increase as follows - NB: yarn overs from the increases will always be worked twisted, they shouldn't create holes.

## GARTER-STITCH SECTION

ROW 1 (right side): Knit 1, 1 yarn over, knit 2, 1 yarn over, knit 1 (mid-stitch - this stitch is always worked in stockinette stitch), 1 yarn over, knit 2, 1 yarn over, knit 1 (= 4 stitches increased).

ROW 2 (wrong side): Knit 1, 1 yarn over, knit to the mid-stitch, purl the mid-stitch, knit until there is 1 stitch left, 1 yarn over and knit 1 (= 2 stitches increased).

ROW 3 (right side): Knit 1, 1 yarn over, knit to the mid-stitch, 1 yarn over, knit the mid-stitch, 1 yarn over, knit until there is 1 stitch left, 1 yarn over and knit 1 (= 4 stitches increased).

ROW 4 (wrong side): Knit 1, 1 yarn over, knit to the mid-stitch, purl the mid-stitch, knit until there is 1 stitch left, 1 yarn over and knit 1 (= 2 stitches increased).

Repeat rows 3 and 4 until the piece measures 13 cm in the knitting direction. REMEMBER THE KNITTING GAUGE! The shawl measures approx. 19 cm along the mid-stitch and there are approx. 145 stitches.

Now work as follows from the right side: Knit 1, 1 yarn over, knit to the mid-stitch and increase 23 stitches evenly over these stitches, 1 yarn over, knit the mid-stitch, 1 yarn over, knit until there is 1 stitch left and increase 23 stitches evenly over these stitches, 1 yarn over and knit 1 = 195 stitches.

Work the next row as follows from the wrong side: Knit 1, 1 yarn over, purl until there is 1 stitch left on the row, 1 yarn over and knit 1 (= 2 stitches increased).

Now work the honeycomb pattern and increase as follows.

## HONEYCOMB PATTERN

ROW 1 (right side): Knit 1, 1 yarn over, knit 1, work A.1 as far as a complete repeat will go before the mid-stitch, knit the remaining stitches to the mid-stitch, 1 yarn over, knit the mid-stitch, 1 yarn over, knit the same number after the mid-stitch as before, work A.1 until there are 2 stitches left, knit 1, 1 yarn over and knit 1 (= 4 stitches increased).

ROW 2 (wrong side): Knit 1, 1 yarn over, purl until there is 1 stitch left on the row, 1 yarn over and knit 1 (= 2 stitches increased).

Repeat rows 1 and 2. NOTE: The increased stitches are worked into the honeycomb pattern as soon

as there is room for a complete or half repeat in width.

AT THE SAME TIME on the row marked with an arrow in A.1, decrease 46 stitches evenly spaced (23 stitches on each side of the mid-stitch). When A.1 is finished, there are approx. 195 stitches. Work an edge as follows.

### EDGE



ROW 1 (right side): Knit 1, 1 yarn over, work A.2 to the mid-stitch, 1 yarn over, knit the mid-stitch, 1 yarn over, work A.2 until there is 1 stitch left (starting the pattern after the mid-stitch so it is the mirror image of the first side), 1 yarn over and knit 1 (= 4 stitches increased).

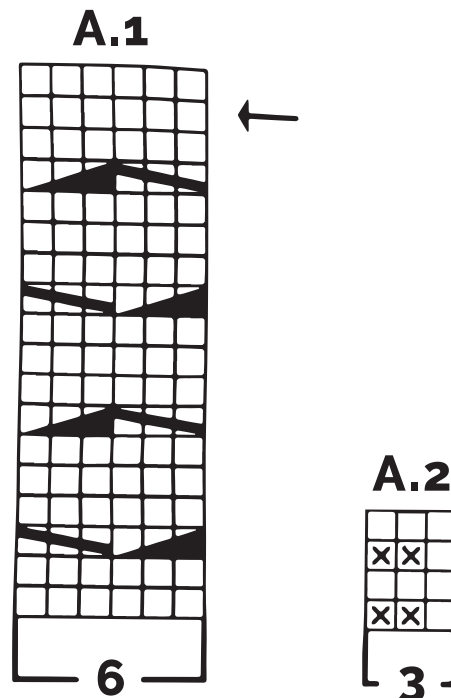
ROW 2 (wrong side): Knit 1, 1 yarn over, purl until there is 1 stitch left on the row, 1 yarn over and knit 1 (= 2 stitches increased).

Repeat rows 1 and 2 until A.2 measures 2 cm. NOTE: The increased stitches are worked into the pattern.

The shawl measures approx. 29 cm down the mid-stitch and there are approx. 2/3 stitches. Bind off a little loosely with knit from the right side.

### DIAGRAM

- = knit from right side, purl from wrong side
- ⊗ = purl from right side
-  = place 2 stitches on cable needle behind the piece, knit 1, knit 2 from cable needle
-  = place 1 stitch on cable needle in front of piece, knit 2, knit 1 from cable needle
- ← = decrease row



More Free Patterns  
Available Online:  
[knitandcrochetstores.com](http://knitandcrochetstores.com)

   /knitcrochetstores



Knit &  
Crochet<sup>MR</sup>  
STORES