

# Cumberland Tank

Designed by Two of Wands

Pattern No.

Yarn: Lion Brand®  
Color Theory®

Level 2 Easy



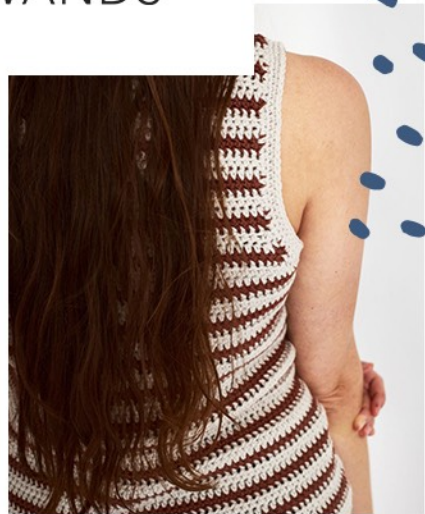


# CUMBERLAND TANK

●●○○



TWO  
OF  
WANDS



## MATERIALS

- 2 (2, 3, 3, 3, 3, 4, 4) skeins Lion Brand Color Theory in Moonbeam (619-099V) for color A
- 1 (2, 2, 2, 2, 2, 2, 3) skein(s) Lion Brand Color Theory in Raisin (619-144U) for color B (worsted, weight 4; 246yds/225m per skein)
- Size US J/10 (6mm) crochet hook
- Size US I/9 (5.5mm) crochet hook
- Tapestry needle

## GAUGE

14 sts = 4"/10cm  
2 rows half double crochet = .75"/2cm  
2 rows single crochet = .5"/1.25cm  
12.75 rows in striping pattern = 4"/10cm

## ABBREVIATIONS

All Two of Wands patterns are written in standard US terms.

<b>Ch</b>	Chain
<b>Dec</b>	Decrease
<b>Hdc</b>	Half double crochet
<b>Hdc2tog</b>	Half double crochet 2 together
<b>Rep</b>	Repeat
<b>Rnd(s)</b>	Round(s)
<b>RS</b>	Right side
<b>Sc</b>	Single crochet
<b>Sc2tog</b>	Single crochet 2 together
<b>Sk</b>	Skip
<b>Sl st</b>	Slip stitch
<b>St(s)</b>	Stitch(es)
<b>WS</b>	Wrong side

## FINISHED DIMENSIONS

Suggested positive ease: 5-7"/13-18cm

Pictured in a size S on model with 34"/86cm bust



		<b>XS</b>	<b>S</b>	<b>M</b>	<b>L</b>	<b>XL</b>	<b>2XL</b>	<b>3XL</b>	<b>4XL</b>
<b>A</b>	Bust/body circumference	(in) 35	39	43	47	51	55	59	63
		(cm) 89	99	109	119.5	129.5	139.5	150	160
<b>B</b>	Full length	22.5	22.5	23.75	23.75	26.25	26.25	27.5	27.5
		57	57	60.5	60.5	66.5	66.5	70	70
<b>C</b>	Armhole depth	8.75	8.75	10	10	11.25	11.25	12.5	12.5
		22	22	25.5	25.5	28.5	28.5	32	32
<b>D</b>	Body length	13.75	13.75	13.75	13.75	15	15	15	15
		35	35	35	35	38	38	38	38
<b>E</b>	Back neck width	7.75	8	8.25	8.5	8.75	8.5	8.75	9.25
		19.5	20.5	21	21.5	22	21.5	22	23.5
<b>F</b>	Shoulder width	2	2	2.25	2.25	2.5	2.75	3.25	3.25
		5	5	5.5	5.5	6.5	7	8.5	8.5

## NOTES

Tank is worked first in joined, turned rounds to the underarms and then flat in rows for the front and back. Turn at the end of each round and row. To change color in rounds, work the slip stitch that joins the round in the new color and carry the alternating colors up the wrong side of the work. To change color in rows, work the final yarn over of the last stitch of the row in the new color and carry the alternating colors up the side of the work. Pattern is written for eight sizes: XS (S, M, L, XL, 2XL, 3XL, 4XL).

## BODY

With J/10 (6mm) hook and color A, ch 122 (136, 150, 164,178, 192, 206, 220). Being careful not to twist the ch, sl st to the 1st ch to join in the round.

**Rnd 1 (RS)** Ch 1, hdc around, sl st to 1st hdc to join and pull to tighten. (122 (136, 150, 164,178, 192, 206, 220) sts)

Turn here and at the end of each round.

**Rnd 2 (WS)** Ch 1, hdc around, sl st to 1st hdc to join and pull to tighten.

Change to color B.

**Rnds 3+4** Ch 1, sc around, sl st to 1st sc to join and pull to tighten.

Change to color A.

**Rnds 5+6** Ch 1, hdc around, sl st to 1st hdc to join and pull to tighten.

**Rnds 7-42 (42, 42, 42, 46, 46, 46, 46)**

Rep rnds 3-6, 9 (9, 9, 9, 10, 10, 10,10) more times, changing colors every 2 rnds.

**Next 2 rnds** Rep rnds 3 and 4, 1 more time.

Fasten off and cut both colors.

Work will now be separated and worked flat for back and front. Maintain established striping pattern throughout.

## BACK

Row numbers will restart for simplicity.

### Shape armholes:

Turn work to begin next row, sk 6 (7, 8, 9, 10, 11, 12, 13) sts, and rejoin yarn in next st.

**Row 1** Ch 1, and starting in same st as join, hdc 1, hdc2tog, hdc 43 (48, 53, 58, 63, 68, 73, 78), hdc2tog, hdc 1, turn leaving remaining sts unworked. (47 (52, 57, 62, 67, 72, 77, 82) sts)

**Row 2** (Dec) Ch 1, hdc 1, hdc2tog, hdc to last 3 sts, hdc2tog, hdc 1. (45 (50, 55, 60, 65, 70, 75, 80) sts)

**Rows 3+4** (Dec) Ch 1, sc 1, sc2tog, sc to last 3 sts, sc2tog, sc 1. (41 (46, 51, 56, 61, 66, 71, 76) sts)

Sizes - (S, M, L, 1X, 2X, 3X, 4X) only:

Continuing in established striping pattern, work a dec row every row, - (2, 3, 5, 6, 8, 9, 11) more times. (- (42, 45, 46, 49, 50, 53, 54) sts)

All sizes:

Work even in established striping pattern until 26 (26, 30, 30, 34, 34, 38, 38) total armhole rows have been worked, ending with a hdc row.

### Shape back neck:

Right side:

**Row 27 (27, 31, 31, 35, 35, 39, 39)**

Ch 1, sc 6 (6, 7, 7, 8, 9, 10, 10), sc2tog, sc 1, turn leaving remaining sts unworked. (8 (8, 9, 9, 10, 11, 12, 12) sts)

**Row 28 (28, 32, 32, 36, 36, 40, 40)**

Ch 1, sc 1, sc2tog, sc to end of row. (7 (7, 8, 8, 9, 10, 11, 11) sts)

Fasten off and cut both colors. Sk 23 (24, 25, 26, 27, 26, 27, 28) unworked sts from row 27 (27, 29, 29, 31, 31, 33, 33) and rejoin yarn in next st.

Left side:

**Row 27 (27, 31, 31, 35, 35, 39, 39)**

Ch 1 and starting in same st as join, sc 1, sc2tog, sk to end of row. (8 (8, 9, 9, 10, 11, 12, 12) sts)

**Row 28 (28, 32, 32, 36, 36, 40, 40)**

Ch 1, sc to last 3 sts, sc2tog, sc 1. (7 (7, 8, 8, 9, 10, 11, 11) sts)

Fasten off. Secure and weave in all ends.

**FRONT**

Row numbers will restart for simplicity.

**Shape armholes:**

Return to row 1 of back, and starting from the first unworked st, sk 10 (12, 14, 16, 18, 20, 22, 24) sts and rejoin yarn in next st.

**Row 1** Ch 1, and starting in same st as join, hdc 1, hdc2tog, hdc 47 (52, 58, 62, 67, 72, 77, 82), hdc2tog, hdc 1, turn leaving remaining sts unworked. (51 (56, 61, 66, 71, 76, 81, 86) sts)

**Row 2** Ch 1, hdc 1, hdc2tog, hdc to last 3 sts, hdc2tog, hdc 1. (49 (54, 59, 64, 69, 74, 79, 84) sts)

**Rows 3+4** Ch 1, sc 1, sc2tog, sc to last 3 sts, sc2tog, sc 1. (45 (50, 55, 60, 65, 70, 75, 80) sts)

Continuing in established striping pattern, work a dec row every row, 2 (4, 5, 7, 8, 10, 11, 13) more times. (41 (42, 45, 46, 49, 50, 53, 54) sts)

Work even in established striping pattern until 14 (14, 18, 18, 22, 22, 26, 26) total armhole rows have been worked, ending with a hdc row.

**Shape front neck:**

Left side:

**Row 15 (15, 19, 19, 23, 23, 27, 27)**

Ch 1, sc 10 (10, 11, 11, 12, 13, 14, 14), sc2tog, sc 1, turn leaving remaining sts unworked. (12 (12, 13, 13, 14, 15, 16, 16) sts)

**Row 16 (16, 20, 20, 24, 24, 28, 28)**

Ch 1, sc 1, sc2tog, sc to end of row. (11 (11, 12, 12, 13, 14, 15, 15) sts)

**Row 17 (17, 21, 21, 25, 25, 29, 29)**

Ch 1, hdc to last 3 sts, hdc2tog, hdc 1. (10 (10, 11, 11, 12, 13, 14, 14) sts)

**Row 18 (18, 22, 22, 26, 26, 30, 30)**

Ch 1, hdc 1, hdc2tog, hdc to end of row. (9 (9, 10, 10, 11, 12, 13, 13) sts)

**Row 19 (19, 23, 23, 27, 27, 31, 31)**

Ch 1, sc to last 3 sts, sc2tog, sc 1. (8 (8, 9, 9, 10, 11, 12, 12) sts)

**Row 20 (20, 24, 24, 28, 28, 32, 32)**

Ch 1, sc 1, sc2tog, sc to end of row. (7 (7, 8, 8, 9, 10, 11, 11) sts)

**Next 8 rows** Work even in established striping pattern.

Fasten off and cut both yarns. Sk 15 (16, 17, 18, 19, 18, 19, 20) unworked sts from row 15 (15, 19, 19, 23, 23, 27, 27) and rejoin yarn in next st.

Right side:

**Row 15 (15, 19, 19, 23, 23, 27, 27)**

Ch 1 and starting in same st as join, sc 1, sc2tog, sc to end of row. (12 (12, 13, 13, 14, 15, 16, 16) sts)

**Row 16 (16, 20, 20, 24, 24, 28, 28)**

Ch 1, sc to last 3 sts, sc2tog, sc 1. (11 (11, 12, 12, 13, 14, 15, 15) sts)

**Row 17 (17, 21, 21, 25, 25, 29, 29)**

Ch 1, hdc 1, hdc2tog, hdc to end of row. (10 (10, 11, 11, 12, 13, 14, 14) sts)

**Row 18 (18, 22, 22, 26, 26, 30, 30)**

Ch 1, hdc to last 3 sts, hdc2tog, hdc 1. (9 (9, 10, 10, 11, 12, 13, 13) sts)

**Row 19 (19, 23, 23, 27, 27, 31, 31)**

Ch 1, sc 1, sc2tog, sc to end of row. (8 (8, 9, 9, 10, 11, 12, 12) sts)

**Row 20 (20, 24, 24, 28, 28, 32, 32)**

Ch 1, sc to last 3 sts, sc2tog, sc 1. (7 (7, 8, 8, 9, 10, 11, 11) sts)

**Next 8 rows** Work even in established striping pattern.

Fasten off. Secure and weave in all ends.

Seam shoulders.

## ARMHOLE EDGING

With I/9 (5.5mm) hook and RS facing, join color A at one underarm, ch 1, and sc evenly around armhole. Do not join. Place marker for beginning of round. Work 2 more spiral, un-joined rounds of sc.



Rep for other armhole.

Fasten off.

## **NECKLINE EDGING**

With I/9 (5.5mm) hook and RS facing, join color A one shoulder seam, ch 1, and sc evenly around neckline. Do not join. Place marker for beginning of round. Work 2 more spiral, un-joined rounds of sc.

Fasten off. Secure and weave in all ends.



**#CREWOFWANDS**

**TWOOFWANDS.COM • @TWOOFWANDS**

Share your projects made using Two of Wands patterns on Instagram with the hashtag #crewofwands to get featured on the @twoofwands page and be in the running for monthly pattern giveaways!

The pattern and photographs of this design are the property of Two of Wands and are for personal, non-commercial use only. These patterns files are protected by US copyright, and you may not distribute or sell them electronically or physically. Small batch sales of finished pieces made from this pattern are permitted, but seller must use their own photographs and credit must be given to Two of Wands as the designer.