

BLANKET

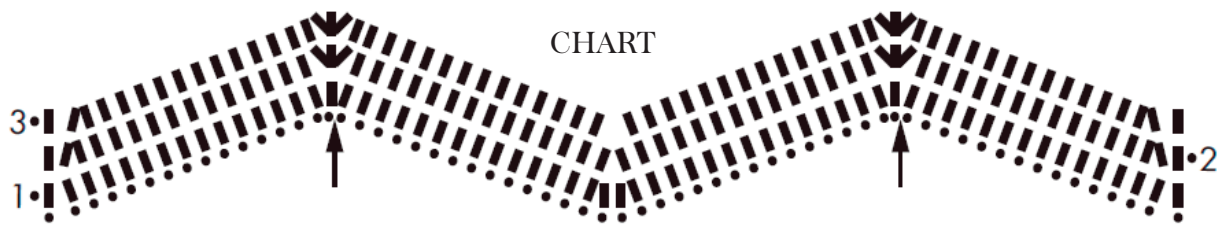


GOMITOLO by LANA GROSSA
50% Virgin Wool, 50% Acrylic
200 g, 765.529 yards

CROCHET

HOW TO MAKE IT

Blanket, Lana Grossa



MATERIALS

1000 g of Lana Grossa Gomitolo 100 (50% pure wool, 50% acrylic; 180 m/100 gl in Beige/Salmon/Orange/Grey/Green (col 108).
Size 6 mm crochet hook.

CHART KEY

- = 1 chain (ch)
- | = 1 single crochet (sc)
- ↗ = sc2tog
- ↘ = 3 sc in one st

CHEVRON PATTERN

Work according to chart. Numbers at left and right edge of chart indicate rows. Work first sc on first row in 2nd ch from hook. Beg each row with ch1 (does not count as 1 sc).

Beg with sts before patt rep, work sts between arrows for patt rep, end with sts after patt rep. Work incs and decs as shown on chart.

To increase, work 3 sc in one st; to decrease at beg and end of rows, sc2tog; to decrease in the middle of rows, skip 2 sc. Beg on row 2, work under back loop only. Work rows 1 – 3 once, then repeat rows 2 and 3, continuing to work incs and decs as established.

Gauge: 18 sc and 8.5 rows = 10 x 10 cm in chevron patt with size 6 mm crochet hook.

INSTRUCTIONS

Ch186 + ch1 and work row 1 of chart for chevron patt. Working first sc in 2nd ch from hook, work 1 sc in each ch across. Work incs and decs as shown on chart. Stitch count remains the same = half a patt rep at beg of row, 5 full patt reps and half a patt rep at end of row. Follow chart until blanket measures approx. 176 cm from beg and 148 rows have been worked in chevron patt. Cut yarn and fasten off.

FINISHING

Pin blanket to measurements and block. Carefully weave in all ends.



STORES

Find us at:
MOA: Level 3, West, 388 West Market,
Bloomington, MN 55425
More patterns online:
www.crochetstores.com