

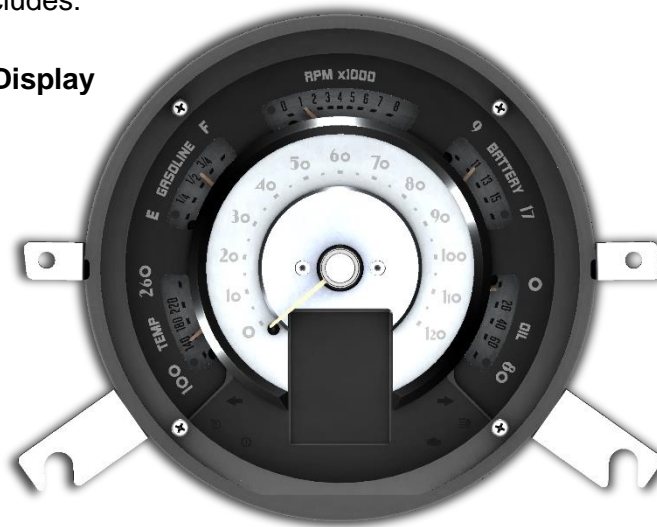


RTX-49C

Dakota Digital RTX Instrument Installation
For 1949-50 Chevrolet Car

Your new **RTX-49C** kit includes:

RTX Display



Buzzer

Installation Manuals

Switch Assembly

Universal Sender Pack



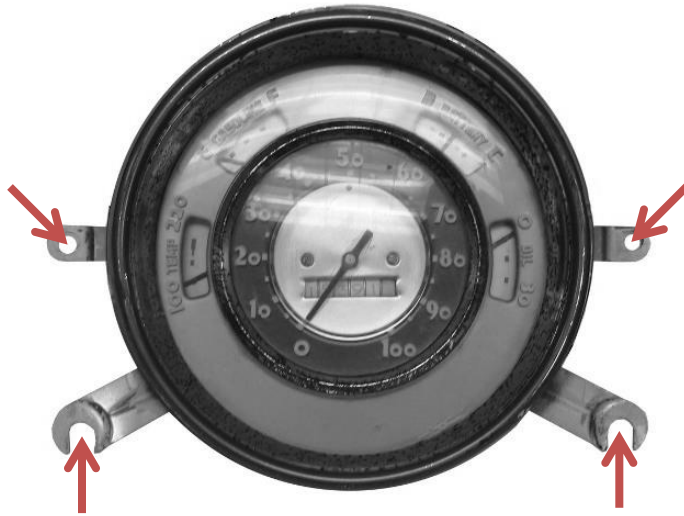
36" Main Harness



Control Box

Installation

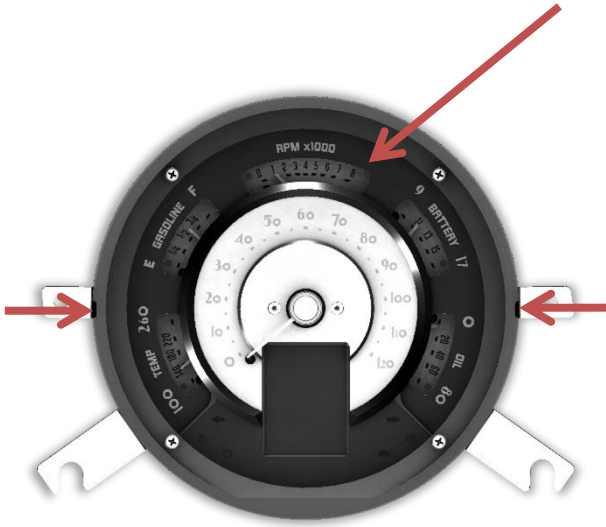
- 1a. Remove the stock gauges from the dash. Remove the two hex nuts from behind the dash from the bolts that go through the upper two tabs.
- 1b. After the hex nuts are removed you can slide the system off of the bolts and lift system off the two lower tabs.



2. Remove the stock gauges, and lens from the bezel. The only item to be reused is the original front bezel and the two hex nuts; the other pieces can be discarded. Now is a good time to clean the bezel and remove any dirt or old lens gasket material.



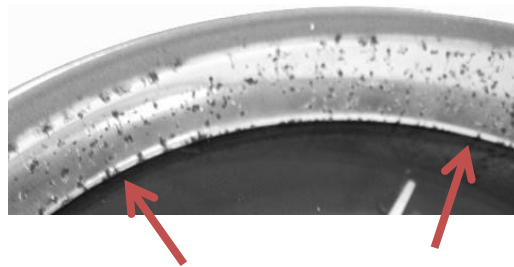
3a. Remove the protective tape from the clear lens and install the RTX system into the bezel. Watch carefully as you insert the system so you don't scratch or damage the lens.



3b. Line the slots on the edge of the new system with the flanges on the original bezel and slip them together.



4. The RTX system should align tightly and the lens should sit flush with the bezel.



5. Connect the provided 36" main harness and buzzer (optional for audio feedback) to the back of the RTX system. As the assembled cluster is installed into the dash, take care when routing the main harness back to the control box.



6. Re-install the cluster into the car using the retained factory hardware and refer to the main manual for wiring instructions to complete the RTX installation.



⚠WARNING: This product can expose you to chemicals including lead, which is known to the State of California to cause cancer and birth defects or other reproductive harm. For more information go to www.P65Warnings.ca.gov



4510 W. 61st St. North
Sioux Falls, SD 57107
www.dakotadigital.com
dakotasupport@dakotadigital.com

Phone (605) 332-6513
Fax (605) 339-4106

© Copyright 2021 - Dakota Digital

Manual # 650766