



Specialty Power Windows®

INSTALLING PART # 4648FDPC IN 46 TO 48 FORD COUPES

1. REMOVE INNER DOOR HANDLE, WINDOW HANDLE, AND TRIM PAD.
2. REMOVE OLD WINDOW REGULATOR. THIS IS EASIEST TO DO BY REMOVING VENT GLASS ASSEMBLY.
3. REMOVE DOOR GLASS. NOW IS A GOOD TIME TO INSTALL NEW WINDOW FELTS, DIVISION BAR FELT, AND DUST BELTS.
4. INSTALL LOWER GLASS CHANNEL (CENTERED) ONTO BOTTOM OF DOOR GLASS
5. REMOVE 7 MM BOLT ON BOTTOM OF REGULATOR AND ATTACH MOUNTING BRACKET .
6. CUT A RELIEF HOLE FOR THE SWITCH WHERE CRANK STUD USED TO PROTRUDE THRU. MEASURE OVER FROM DOOR EDGE AND MARK AT 12" & 17" FOR LOCATIONS "C", "D" & "E" AS SHOWN IN PICTURE # 1 REMOVE THE RECESSED METAL FOR CLEARANCE OF PWL REGULATOR.
7. DRILL A 5/16" HOLE AT LOCATION "A" AS SHOWN IN PICTURE # 1. THIS HOLE SHOULD BE 14 1/2" FROM REAR EDGE OF THE DOOR AND 6" DOWN FROM TOP EDGE OF THE DOOR.
DRILL A 5/16" HOLE AT LOCATION "B" SHOWN IN PICTURE # 1. THIS HOLE SHOULD BE 11 3/4" FROM THE REAR EDGE OF THE DOOR AND 22 3/4" DOWN FROM THE TOP EDGE OF THE DOOR.
8. ASSEMBLE LIFT BAR ASSEMBLIES PER ILLUSTRATION.
9. INSTALL REGULATORS IN DOORS AND ROTATE INTO POSITION ATTACH LIFT BAR ASSEMBLIES TO GUIDE BARS AND LOWER GLASS CHANNELS.
10. ADJUST AS NEEDED.

INSTALLING FLEXIBLE WIRE CONDUIT:

11. WITH BOTH DOORS COMPLETELY OPEN LOOK ACROSS THE BODY OF THE CAR TO THE OTHER DOOR AND SEE WHAT PART OF THE DOOR EXTENDS THE FURTHEREST FROM THE HINGE PILLAR. THIS IS THE AREA YOU WILL WANT TO INSTALL YOUR FLEXIBLE WIRE CONDUIT.
12. HOLD THE NYLON BUSHING FOR THE FWC (FLEXIBLE WIRE CONDUIT). AGAINST THIS PART OF THE DOOR. SCRIBE A CIRCLE AROUND THE FLANGE OF THE BUSHING. NOW DRILL A SMALL HOLE IN THE CENTER OF THIS CIRCLE. SCREW A SMALL SHEET METAL SCREW INTO THIS HOLE, BUT LEAVE ABOUT 1" STICKING OUT. NOW SLOWLY CLOSE THE DOOR UNTIL THIS SCREW MARKS A SPOT ON THE HINGE PILLAR. DRILL A PILOT HOLE AT THIS MARK. THE TWO PILOTS HOLES SHOULD BE IN LINE WHEN THE DOOR IS CLOSED.

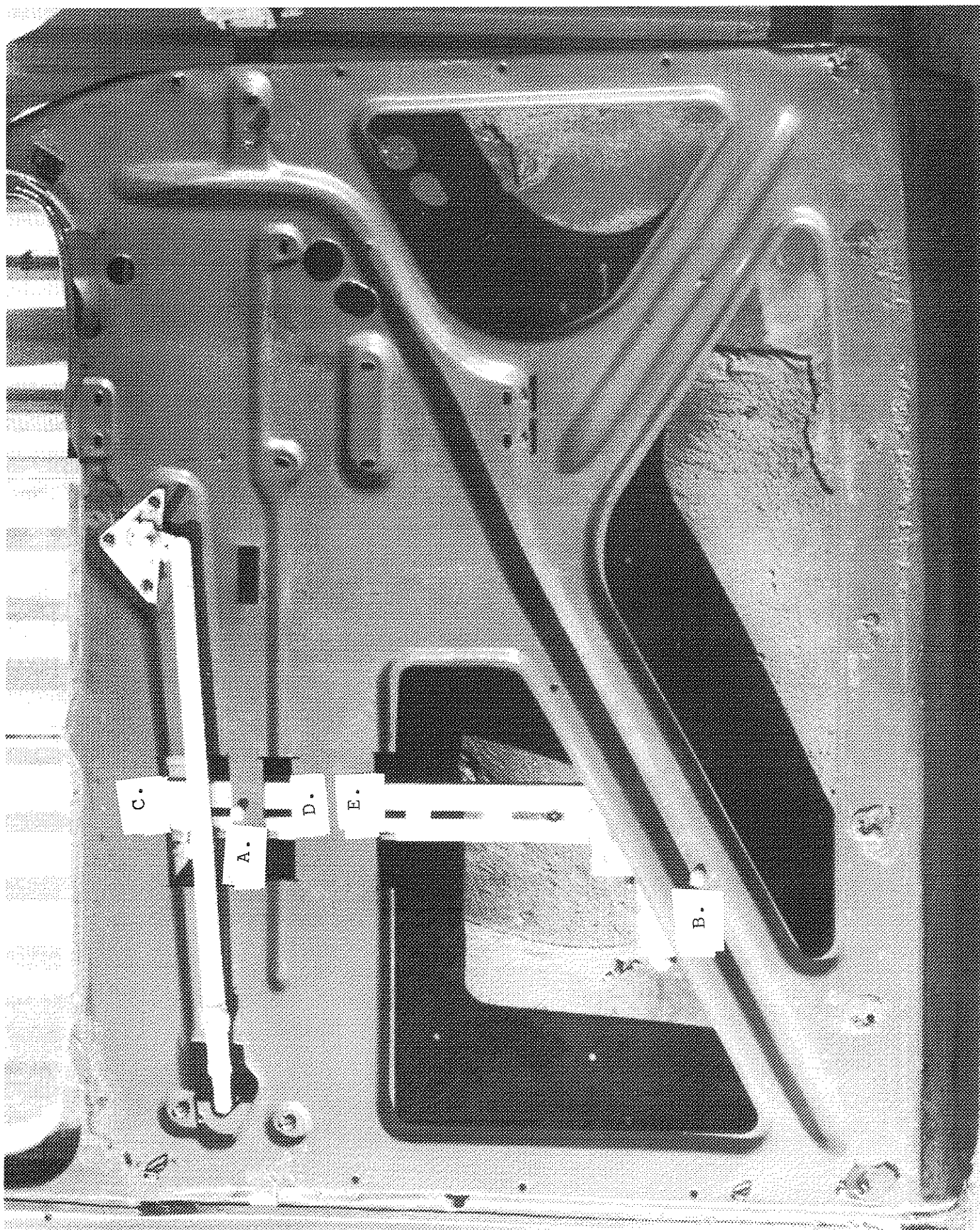
13. NOW USE A HOLE SAW AND DRILL A 3/4" HOLE IN THE HINGE PILLAR AT THE PILOT HOLE.

14. NOW USE A HOLE SAW AND DRILL A 7/8" HOLE IN THE FRONT EDGE OF DOOR AT THE PILOT HOLE. TAKE A ROUND FILE OR A MOUNTED STONE AND ENLARGE HOLE SO THAT THE NYLON BUSHING WILL GO ABOUT HALF WAY IN. DO NOT INSTALL BUSHING YET.

15. INSTALL THE RUBBER GROMMET PART OF THE FWC IN HINGE PILLAR. INSTALL NYLON BUSHING IN FRONT EDGE OF DOOR. THE BUSHING SHOULD FIT TIGHT ENOUGH TO HAVE TO BE TAPPED IN.

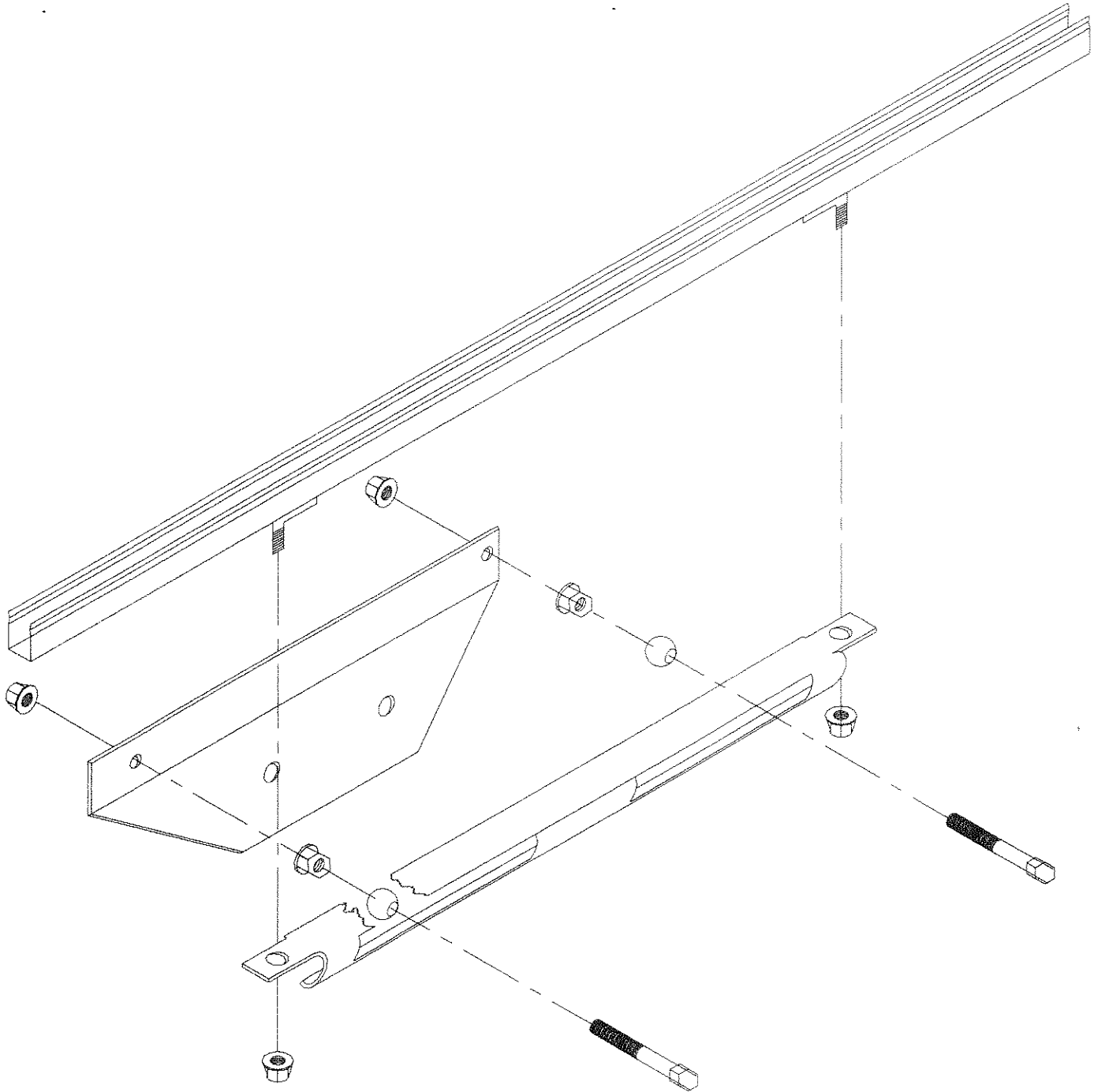
16. PUT LIGHT LUBE ON THE END OF POLISHED CONDUIT. PUSH WHILE TWISTING TO INSTALL THIS PART INTO RUBBER GROMMET ON THE HINGE PILLAR. INSTALL CONDUIT SO ABOUT 1/2" STICKS THROUGH RUBBER GROMMET. THE OTHER END OF POLISHED CONDUIT SLIDES IN AND OUT OF NYLON BUSHING IN FRONT EDGE OF DOOR.

17. INSTALL SWITCHES IN DESIRED LOCATION AND CONNECT WIRING AS PER WIRE DIAGRAM.





Specialty Power Windows®



Things to do when installing window regulators. These things apply to **ALL** regulators, whether they are manual or power.

Before installing regulator:

1. Check to be sure glass moves up and down freely in felt run channels. Check front to rear movement. There should be very little movement front to rear.
If glass seems to be slightly snug try powdered graphite in felt channel. Do not use oil type lubricant in felts because it will collect dust and dirt.
If the glass will still not move up and down freely, check the run channels in door and be sure they are perpendicular to each other.
If run channel is right and graphite powder didn't do the trick, remove glass and take it to a local glass shop and have them run the edge of the glass over their belt sander a couple of times.
Don't over do it.
2. Before installing the regulator use a light to medium lubricant (not axle or wheel bearing grease) and lubricate **ALL** pivot points, roller or slide channels, (If channel is rusty remove first). Lubricate rollers, slides, counter balance spring and gear teeth.
3. On power regulators make sure motors are securely mounted.
4. Install regulator and make sure all bolts holding regulator and mounting are tight.
5. Check operation of regulator slowly the first time and look for any possible interference with the other parts of the door (door pull straps, etc.). This check should be done before installing trim panel.



SPECIALTY POWER WINDOWS®

WIRING FOR TWO WINDOWS

WINDOW LIFT MOTORS

LEFT FRONT

RIGHT FRONT

