



# RTX-63C-IMP/RTX-64C-IMP

Dakota Digital RTX Instrument Installation  
For 1963-'64 Chevy Impala, Biscayne, and Bel Air

Your new RTX kit includes:

RTX-63C-IMP



OR

RTX-64C-IMP



**Universal Sender Pack**



**Buzzer**



**Installation Manuals**



**Main Harness**

**Switch assembly**



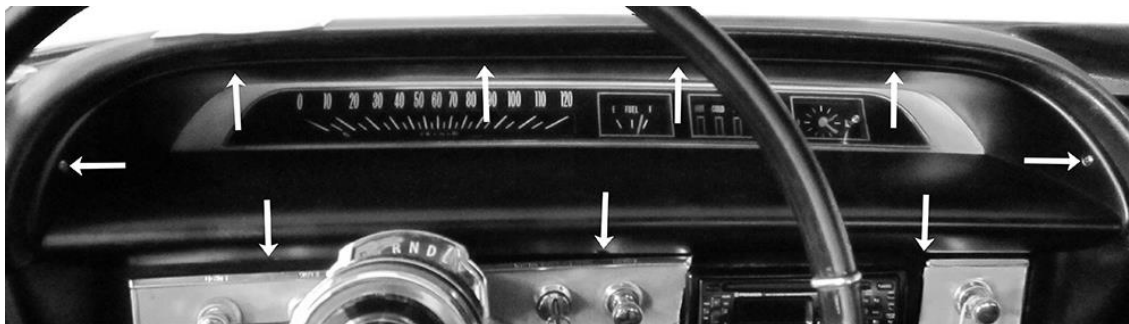
**Control Box**

10-32 Screw  
#10 Lock Washer  
10-32 Hex Nut

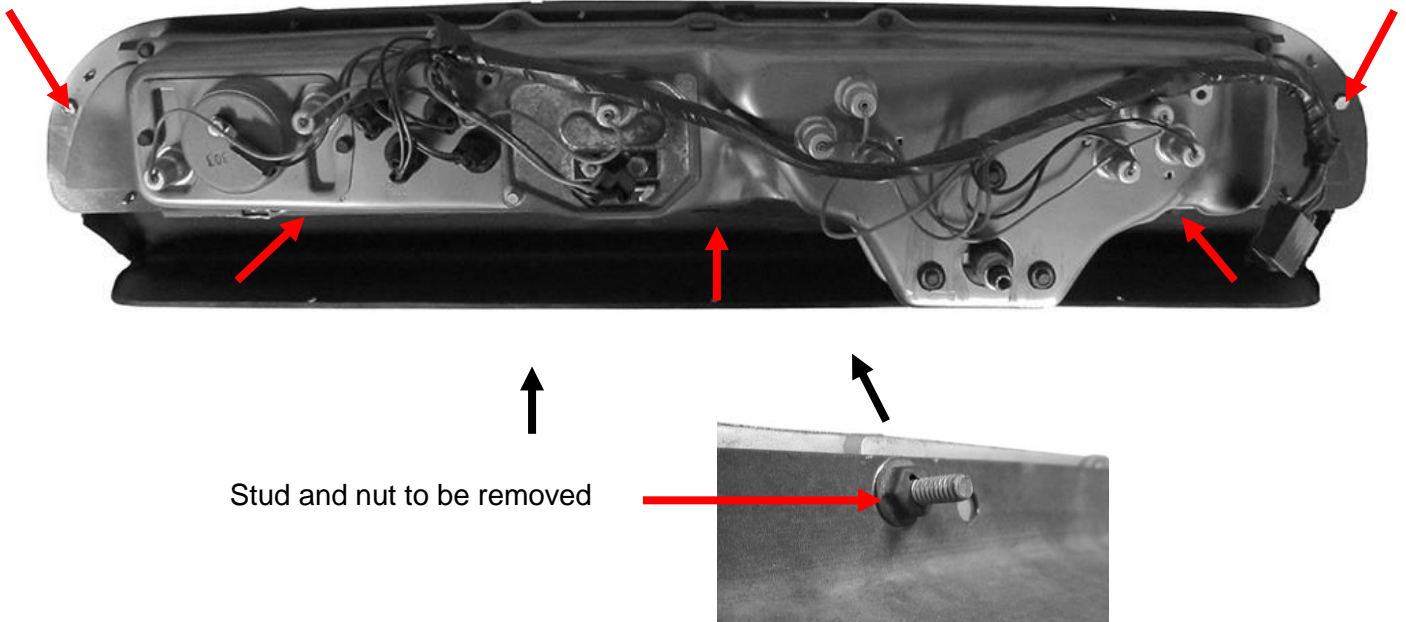


## Installation

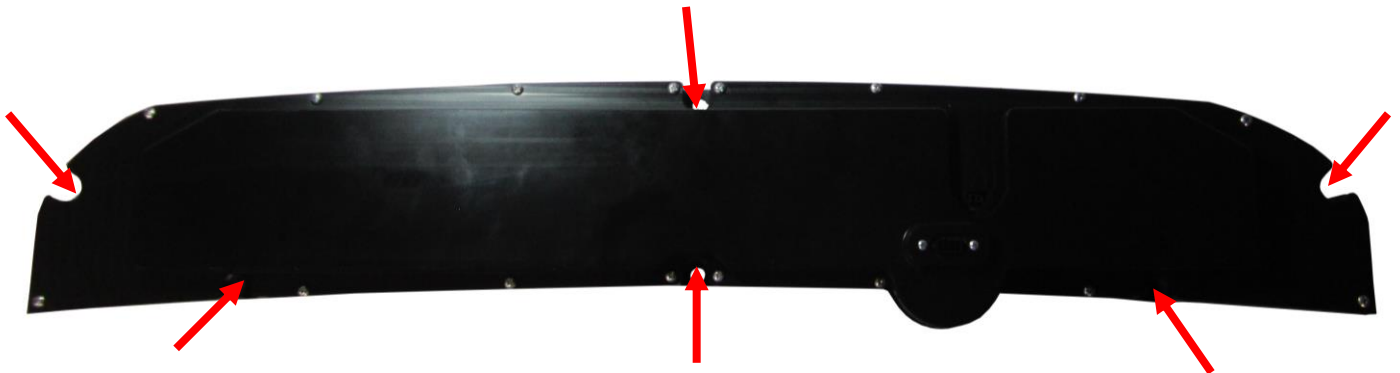
1. Remove the stock gauges from the dash by removing the nine Phillips head screws holding the bezel in the dash.



2. Separate the stock gauges from the bezel by removing the five screws securing the gauges to the bezel. There is also a nut to remove from a stud on the top side of the gauges. The five screws will be re-used for reassembly.



3. Secure the RTX system to the stock bezel using the five stock screws and the provided screw, lock washer, and hex nut in the top center mounting location.



4. Connect the provided Main Harness and the Buzzer (optional for audio feedback) to the back of the RTX system.



5. Re-install the cluster into the vehicle using the factory hardware and refer to the main manual for wiring instructions to complete the RTX installation.



**⚠ WARNING:** This product can expose you to chemicals including lead, which is known to the State of California to cause cancer and birth defects or other reproductive harm. For more information go to [www.P65Warnings.ca.gov](http://www.P65Warnings.ca.gov)



4510 W. 61st St. North  
Sioux Falls, SD 57107  
www.dakotadigital.com  
dakotasupport@dakotadigital.com

Phone (605) 332-6513  
Fax (605) 339-4106

© Copyright 2019 - Dakota Digital