



RTX-61C-IMP

Dakota Digital RTX Instrument Installation
For 1961-'62 Chevy Impala

Your new RTX-61C-IMP kit includes:



RTX Display



Switch assembly

Universal Sender Pack

Buzzer

Installation Manuals

(6) Thumb Nuts

(2) 1/4-20 Nuts

(3) U-Brackets

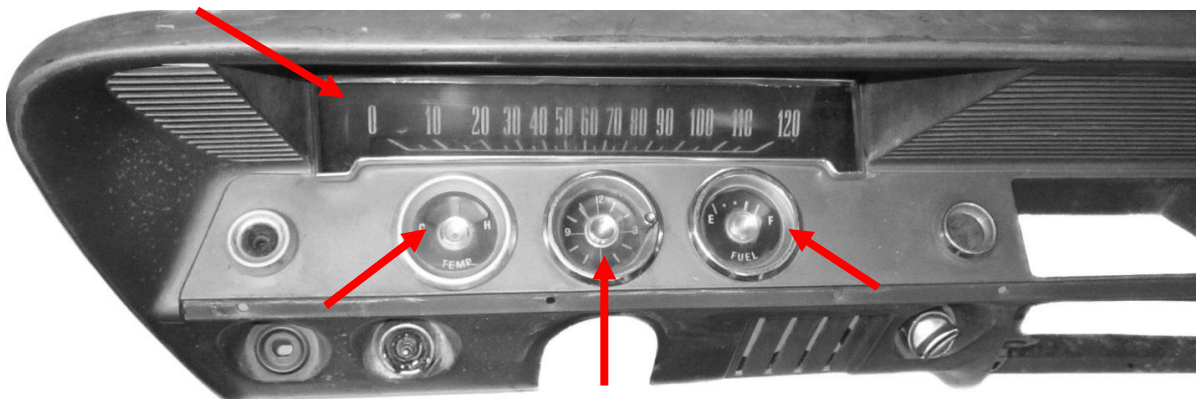


Main Harness

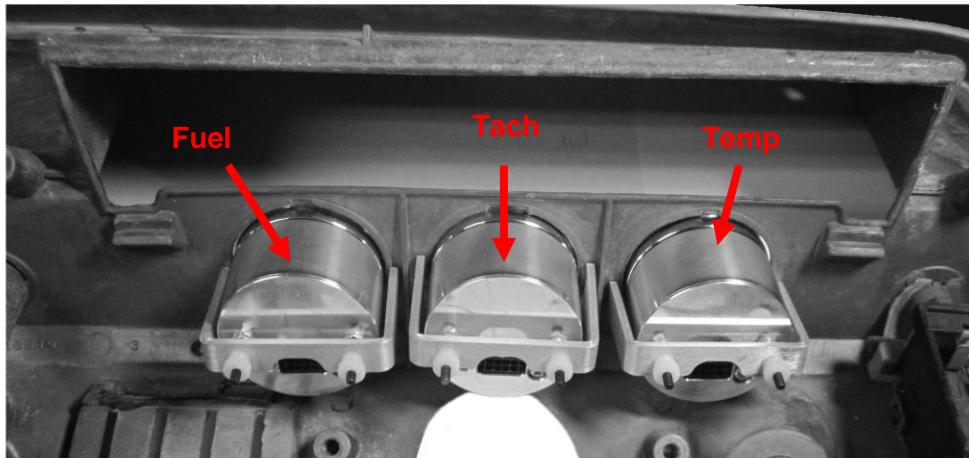
Control Box

Installation

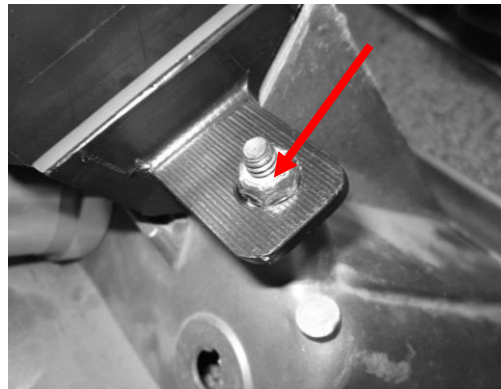
1. Remove the stock gauges from the dash. The thin bezel around the speedo will remain in place.



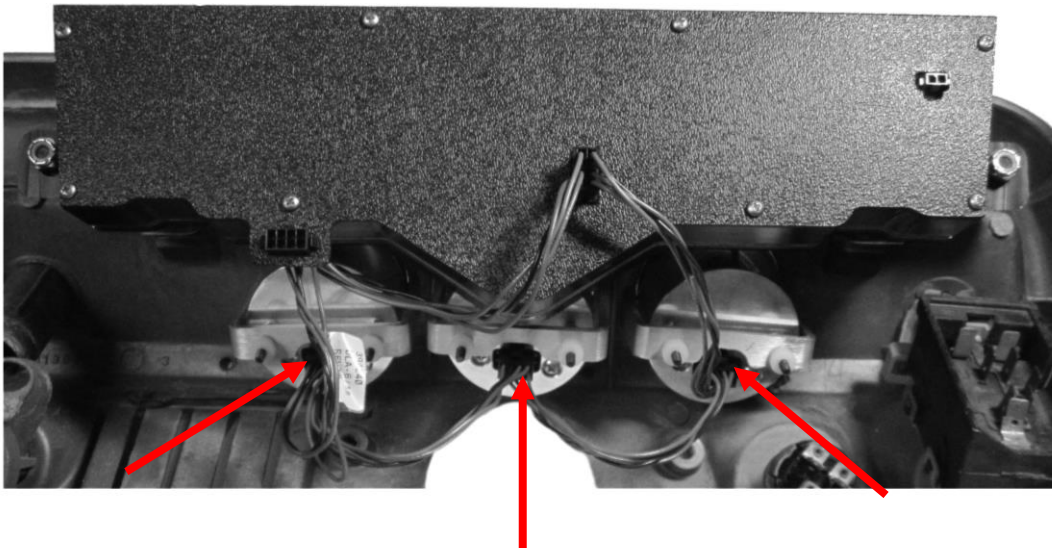
2. Insert the three auxiliary gauges from the front of the dash; from left to right: Temp, Tach, and Fuel. Use the two longer brackets for the Temp and Fuel; the Tach uses the shorter bracket. Use the supplied thumb nuts to secure the gauge to the dash while making sure each gauge is properly orientated.



3. Place the main gauge over the factory studs and use the provided two ¼-20 nuts to secure the gauge to the dash bezel.



4. Make the three (3) interconnect harness connections to the auxiliary gauges with their respective length ends.



5. Connect the provided main harness and the buzzer (optional for audio feedback) to the back of the RTX system.



6. Refer to the main manual for wiring instructions to complete the RTX installation.



⚠️WARNING: This product can expose you to chemicals including lead, which is known to the State of California to cause cancer and birth defects or other reproductive harm. For more information go to www.P65Warnings.ca.gov



4510 W. 61st St. North
Sioux Falls, SD 57107
www.dakotadigital.com
dakotasupport@dakotadigital.com

Phone (605) 332-6513
Fax (605) 339-4106

© Copyright 2019 - Dakota Digital