

**A.c. Compressor  
& Alternator  
Mount  
316R  
Ford & Mercury 6 Cylinder  
170 & 200 Cubic inch**

**As with any part of this nature, make sure it fits your application before painting or plating. Parts that have been painted, plated, or modified may not be returned.**

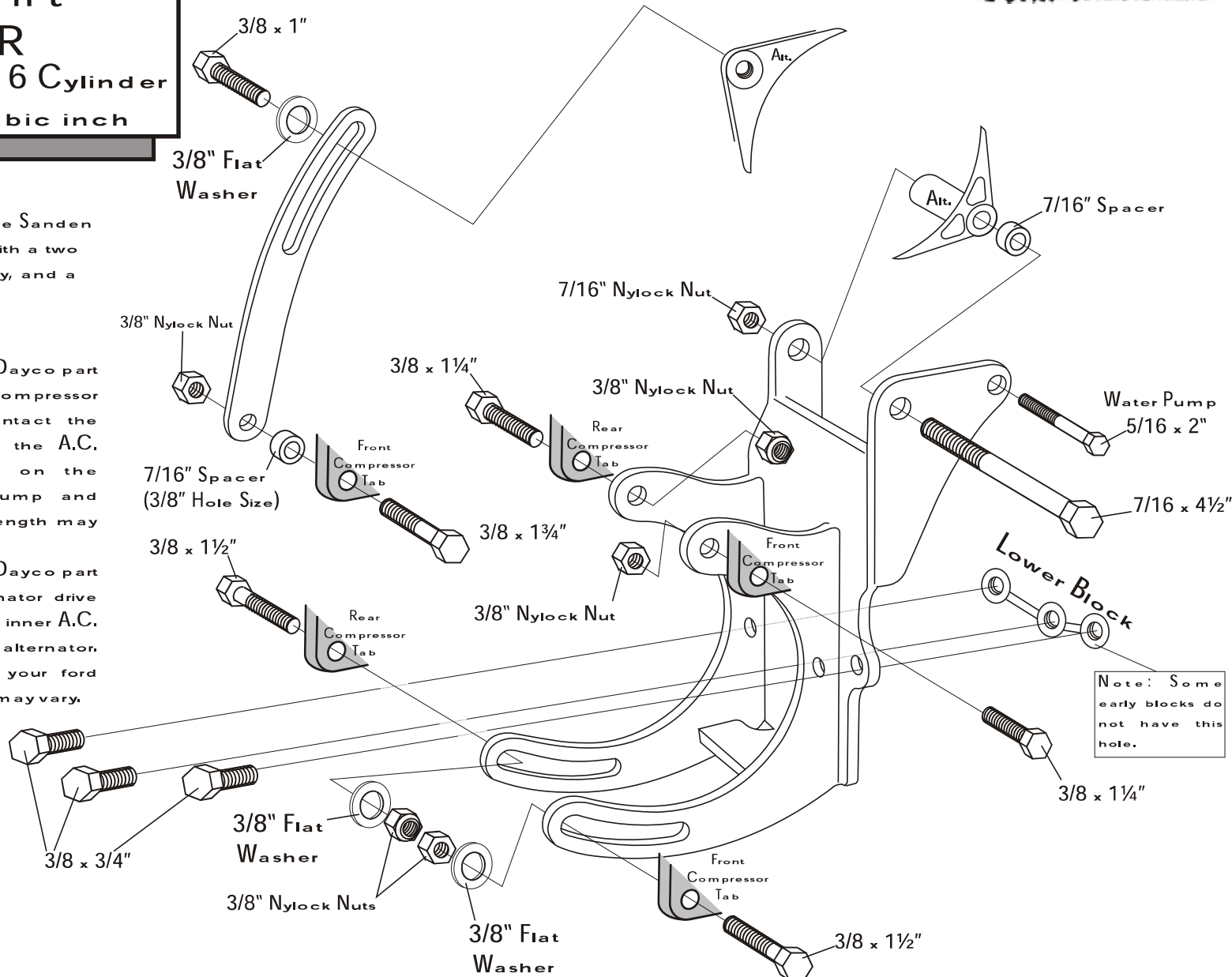


This bracket is designed for the Sanden 508 compressor equipped with a two v-belt groove clutch assembly, and a standard Ford alternator.

**Belt Information:**

We use a belt length of 40 1/2" Dayco part number 15405 for the A.C. compressor Belt. The A.C. Belt will contact the Balancer Water pump and the A.C. Compressor. Depending on the diameter of your water pump and crankshaft pulleys; the belt length may vary.

We use a belt length of 24 1/2" Dayco part number 15245 for the Alternator drive belt. This belt will contact the inner A.C. Compressor groove and alternator. Depending on the size of your ford alternator pulley; the belt size may vary.



A.c. Compressor  
& Alternator  
Mount  
316R  
Ford & Mercury 6 Cylinder  
170 & 200 Cubic inch