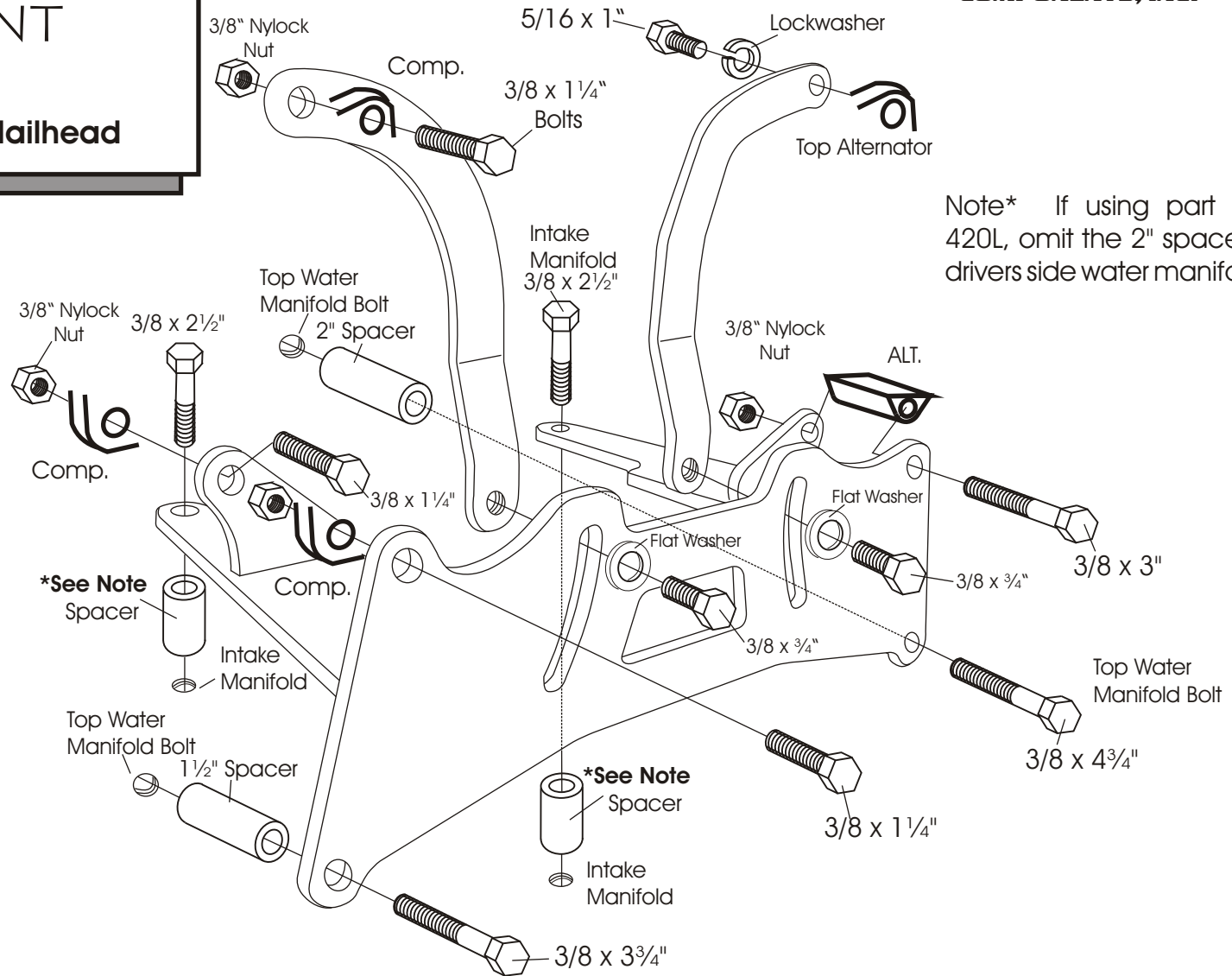


# A.C. COMPRESSOR & ALTERNATOR MOUNT

311

401/425 Buick Nailhead

We use a belt length of 51½" - 52½" on the alternator, and 54½" - 55½" for the compressor. **Belt lengths will vary depending on the diameter of your pulleys.**



Note\* If using part number 420L, omit the 2" spacer at the drivers side water manifold.

**Be Sure to start all bolts before tightening.**

**\*Note:** If using factory cast iron intake, use 1¼" Spacer. **Aftermarket Aluminum Intakes vary in thickness and may require spacer modification.** Tighten bolts at water manifold first. Then determine the length of spacer needed between the bracket and intake manifold. 1" spacers are also supplied with hardware.

**As with any part of this nature, make sure it fits your application before painting or plating. Parts that have been painted, plated, or modified may not be returned.**

A.C. COMPRESSOR  
& ALTERNATOR  
MOUNT

311

401/425 Buick Nailhead

**ALAN GROVE COMPONENTS, INC.**  
**27070 METCALF ROAD**  
**LOUISBURG, KS 66053**