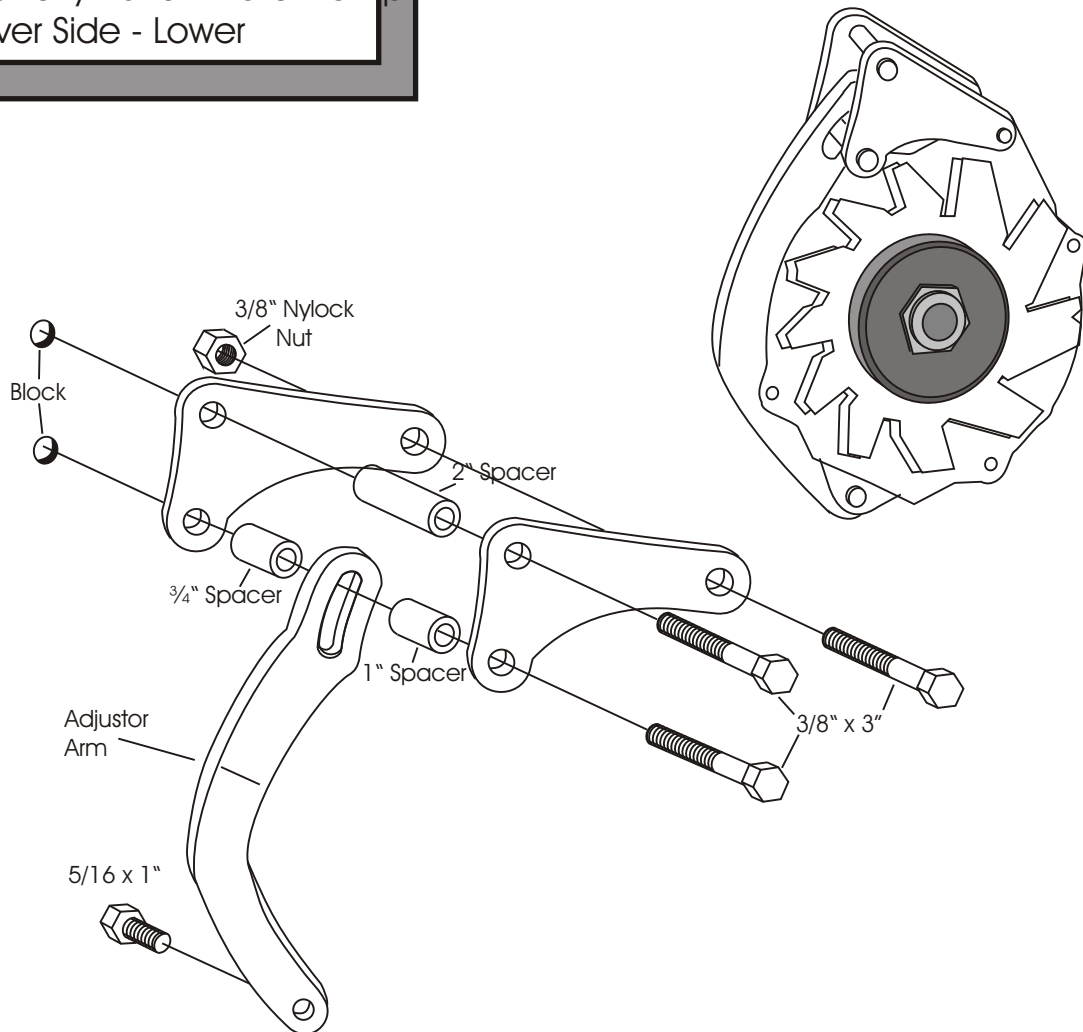


LOWER ALTERNATOR MOUNT 206L

Small Block Chevy - Short Water Pump
Driver Side - Lower



(We use a belt length of 42½ to 43½" with this mount on installations in our shop. However; this can vary with the diameter of your pulleys.)

As with any part of this nature, make sure it fits your application before painting or plating. Parts that have been painted, plated, or modified may not be returned.

**LOWER
ALTERNATOR
MOUNT
206L**

Small Block Chevy - Short Water Pump
Driver Side - Lower

**ALAN GROVE COMPONENTS, INC.
27070 METCALF ROAD
LOUISBURG, KS 66053**