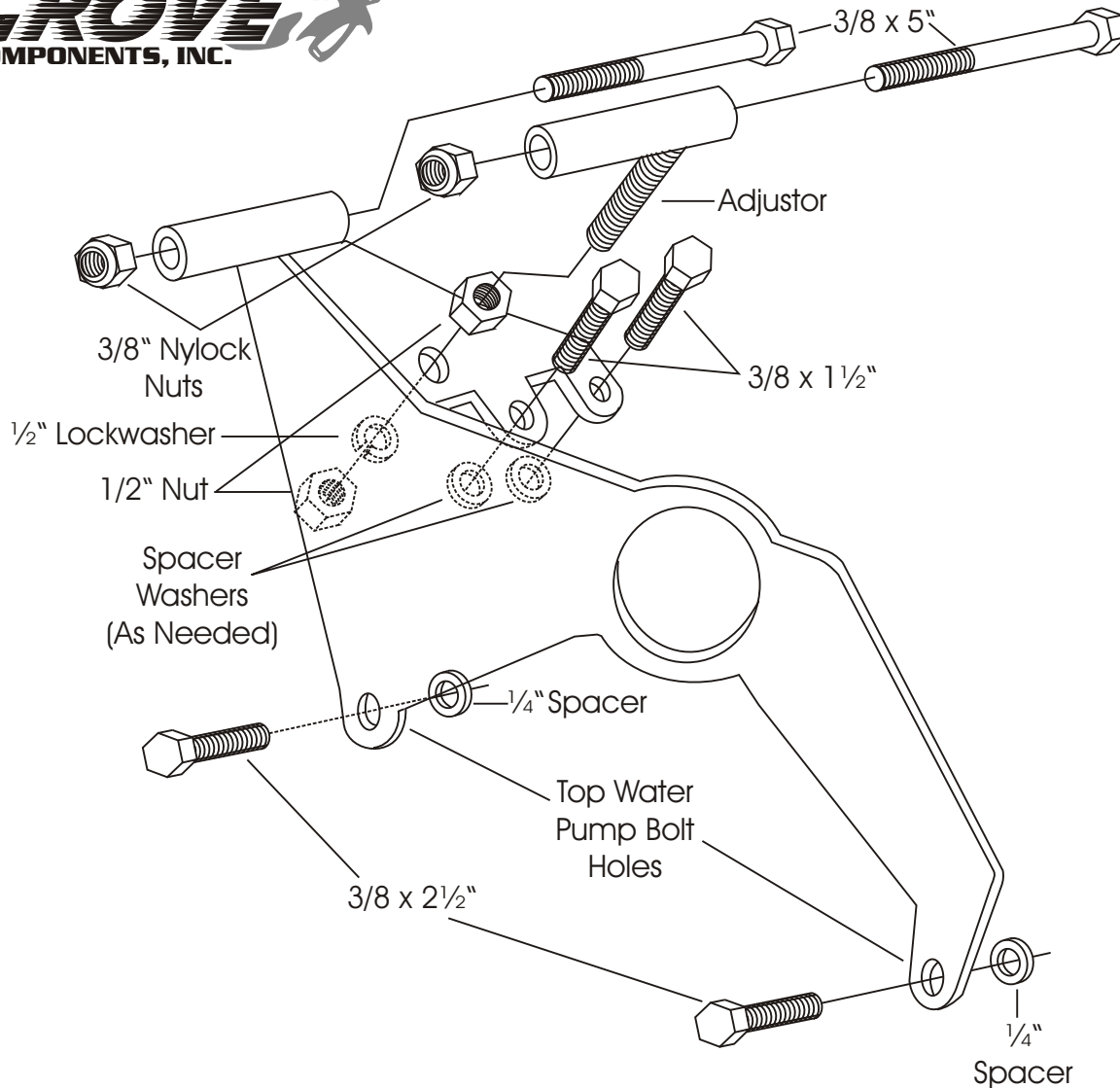




EXTRA CLEARANCE A.C. COMPRESSOR MOUNT 103R

Small Block Chevy - Long Water Pump



The compressor belt will run in the outer grooves of the crank and water pump pulleys originally used for the factory alternator. It was designed to be used with our 203L Driver's Side Alternator Mount.

Note:

Install bolts into the water pump first. Then determine the number of spacer washers needed between the bracket and intake manifold. This will vary with the thickness of the various brands of manifolds. **START ALL MOUNTING BOLTS BEFORE TIGHTENING.**

We use a belt length of 56 to 57" with this mount on installations in our shop. However; this can vary with the diameter of your pulleys.

As with any part of this nature, make sure it fits your application before painting or plating. Parts that have been painted, plated, or modified may not be returned.

EXTRA CLEARANCE
A.C.
COMPRESSOR
MOUNT
103R

Small Block Chevy - Long Water Pump

ALAN GROVE COMPONENTS, INC.
27070 METCALF ROAD
LOUISBURG, KS 66053