

# WHY YOU WILL LOVE OUR DREAMCORE

**DREAMCORE CUSHIONS:** *Featured on Allure Modular and Grace Cushion collections.*

The premiere DreamCore seat cushion features High Resilient furniture-grade foam. High Resilient foam provides exceptional durability and longevity, while offering an outstanding level of comfort. Unlike conventional foams (Viscoelastic/memory foam), the cell structure of High Resilient foam is less uniform and more random, creating a stronger structure, excellent elasticity and increased supporting force. Providing support, resilience and ultimately, unparalleled comfort.



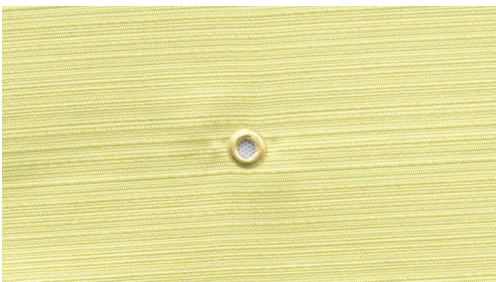
## BACK CUSHION

The back cushion is constructed with moisture-resistant ticking and is engineered to match the silhouette of the cushion, creating a tailored look. The cushion utilizes individual channels, which hold the fill in place and create both comfort and support.



## SEAT CUSHION

The seat cushion is constructed with High Resilient furniture-grade foam wrapped with dacron and moisture-resistant ticking that is glued, not sewn, to prevent moisture penetration.



## SEAT DECK & GROMMET VENTING

The seat deck is constructed of 100% virgin vinyl strapping for enhanced comfort. Virgin vinyl straps do not contain clay fillers, which reduce strap memory. The underside of the seat cushion cover features grommet openings for breathability.



## BACK ATTACHMENT

Homecrest Liberty and Havenhill seat and back cushions feature a Velcro flap back. Elements Cushion seat and back cushion feature a sewn seam to attach the cushions together. This eliminates the use of ties or tabs.

